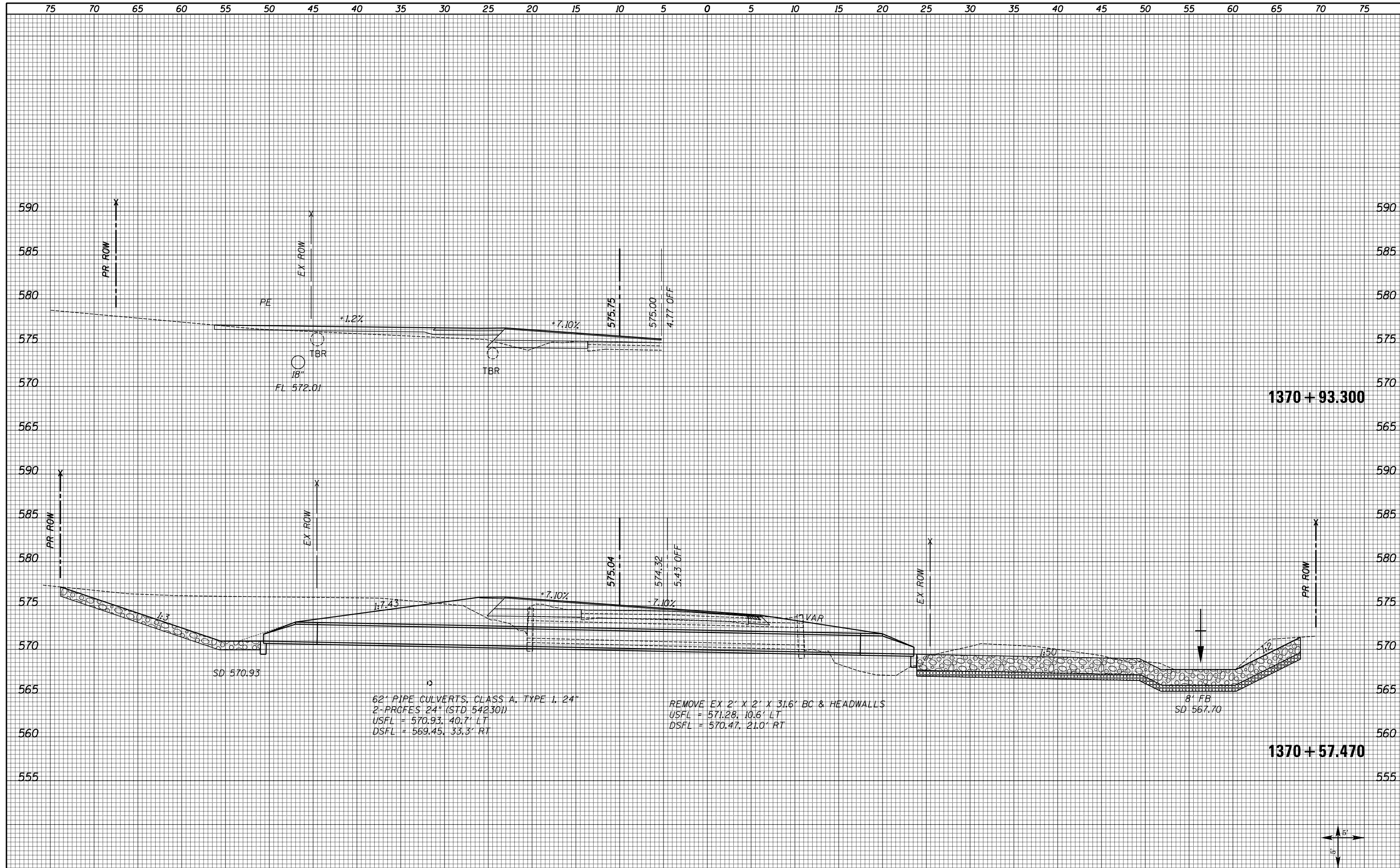


DATE	
BY	
FINAL SURVEY	SURVEYED
NOTE BOOK	PLOTTED
NO.	TEMPLATE
	AREAS
	CHECKED

DATE	
BY	
ORIGINAL SURVEY	SURVEYED
NOTE BOOK	PLOTTED
NO.	TEMPLATE
	AREAS
	CHECKED



1370 + 93.300

1370 + 57.470

62' PIPE CULVERTS, CLASS A, TYPE I, 24"
 2-PROFES 24" (STD 54230)
 USFL = 570.93, 40.7' LT
 DSFL = 569.45, 33.3' RT

REMOVE EX 2' X 2' X 31.6' BC & HEADWALLS
 USFL = 571.28, 10.6' LT
 DSFL = 570.47, 21.0' RT

FILE NAME =	XS_SHEETS-NEW.dgn
-------------	-------------------

USER NAME =	notel
PLOT SCALE =	10.0000" / 1"
PLOT DATE =	8/16/2013

DESIGNED -	REVISOR -
DRAWN -	REVISOR -
CHECKED -	REVISOR -
DATE -	REVISOR -

**STATE OF ILLINOIS
 DEPARTMENT OF TRANSPORTATION**

SCALE: SHOWN		SHEET NO. 36 OF 72 SHEETS	STA. 1370+57.470	STA. 1370+93.300
--------------	--	---------------------------	------------------	------------------

F.A.S. RTE.	SECTION	COUNTY	TOTAL SHEETS	SHEET NO.
1597	14 (W, RS-7)	ADAMS/PIKE	152	111
CONTRACT NO. 72781				
ILLINOIS FED. AID PROJECT				

