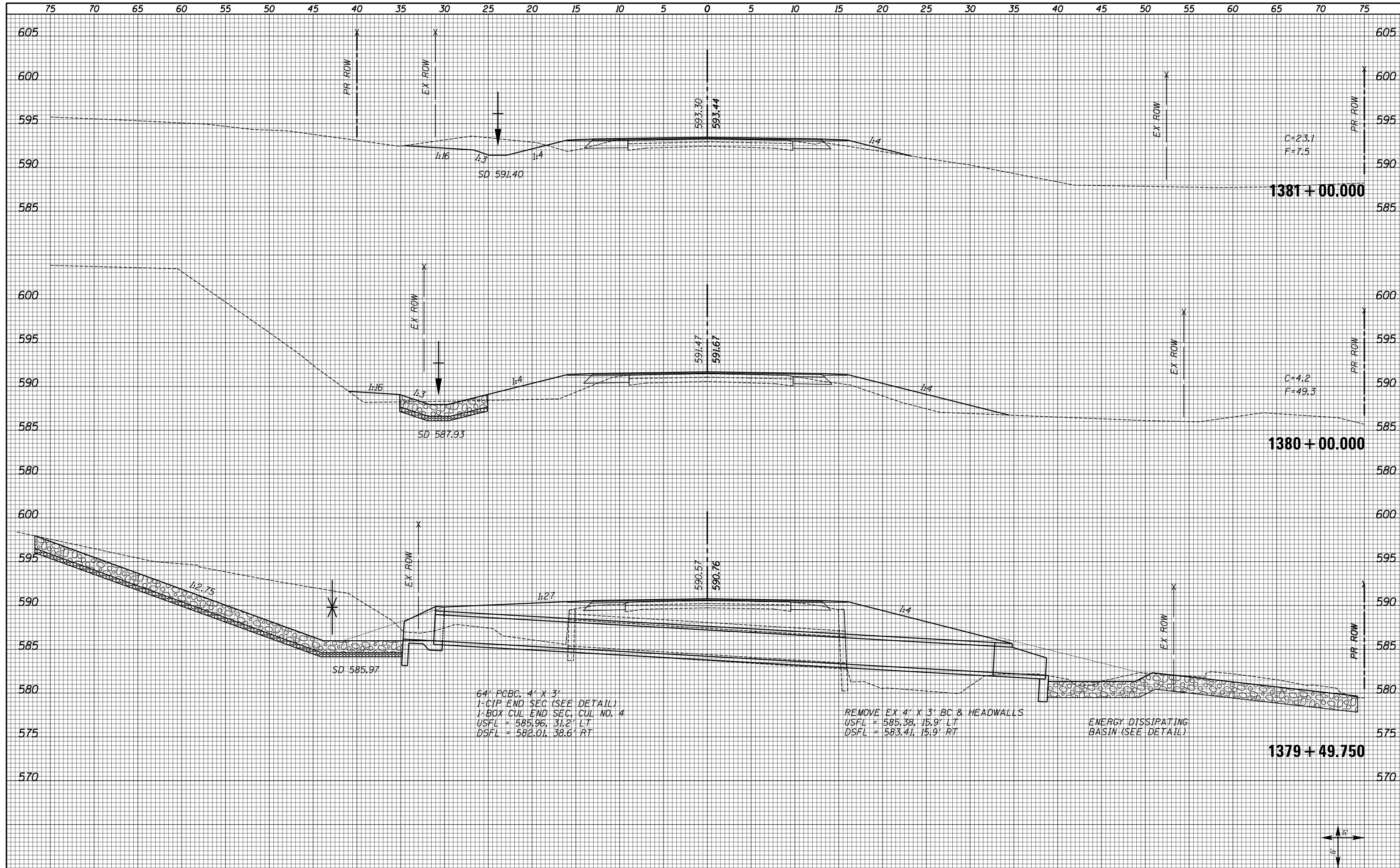


DATE	
BY	
FINAL SURVEY	SURVEYED
NOTE BOOK	PLOTTED
NO.	TEMPLATE
	AREAS CHECKED
	AREAS CHECKED

DATE	
BY	
ORIGINAL SURVEY	SURVEYED
NOTE BOOK	PLOTTED
NO.	TEMPLATE
	AREAS CHECKED
	AREAS CHECKED



FILE NAME = XS_SHEETS-NEW.dgn	USER NAME = notel	DESIGNED -	REVISD -	STATE OF ILLINOIS DEPARTMENT OF TRANSPORTATION	FAS 1597 (IL 96) CROSS SECTIONS	F.A.S. RTE. 1597	SECTION 14 (W, RS-7)	COUNTY ADAMS/PIKE	TOTAL SHEETS 152	SHEET NO. 117		
PLOT SCALE = 10.0000' / in.	CHECKED -	REVISD -	SCALE: SHOWN			SHEET NO. 42 OF 72 SHEETS	STA. 1379+49.750	STA. 1381+00.000	CONTRACT NO. 72781			
PLOT DATE = 8/16/2013	DATE -	REVISD -	ILLINOIS FED. AID PROJECT									