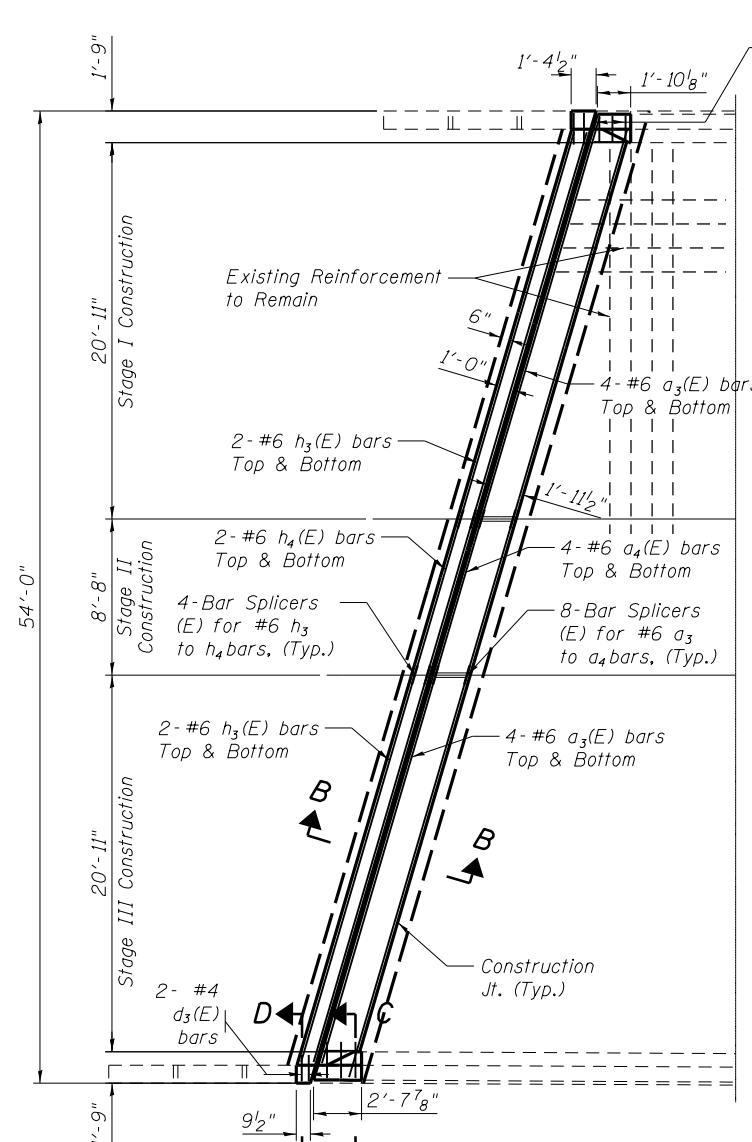
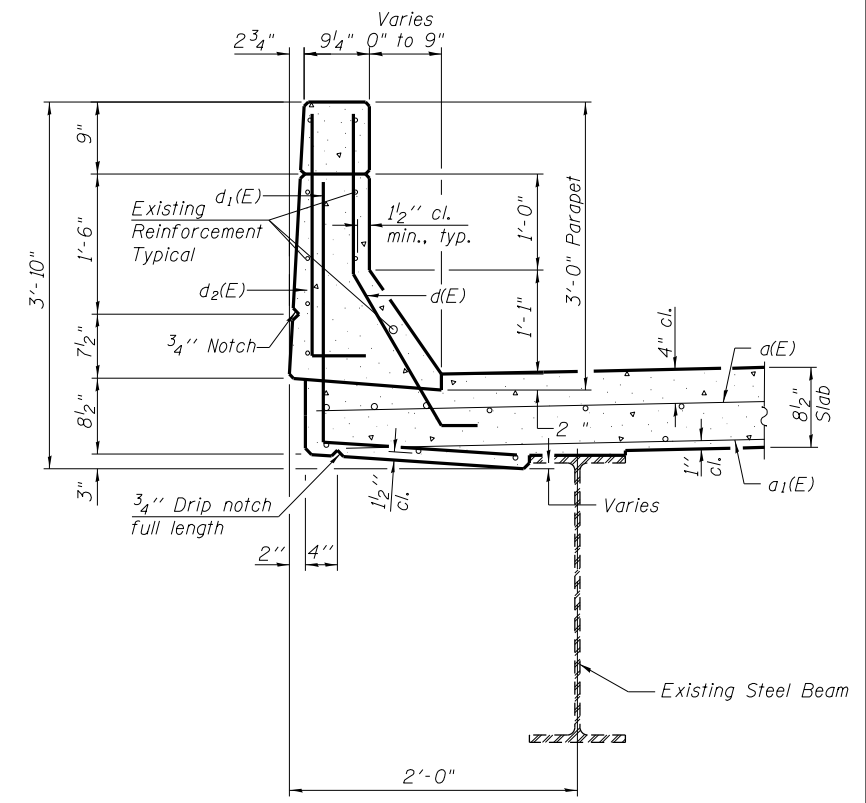


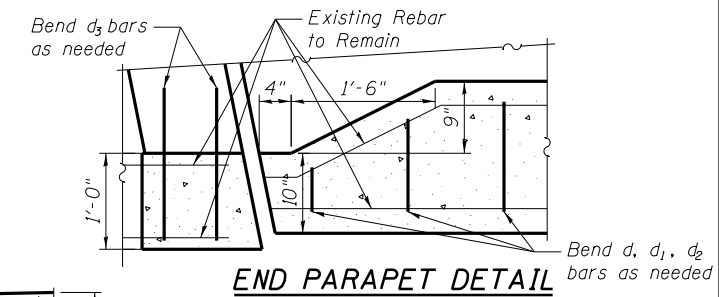
CONCRETE REMOVAL
(West Abut. shown)



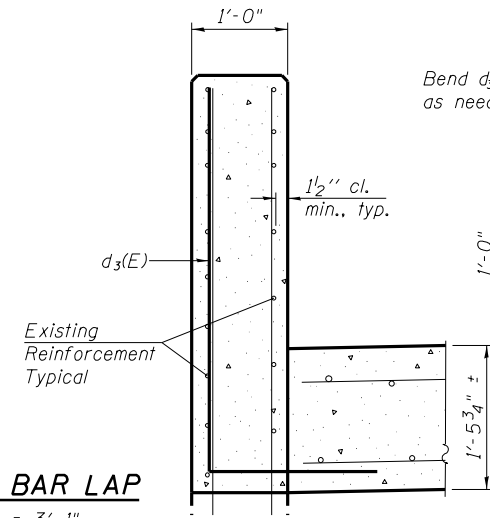
CONCRETE REPLACEMENT
(West Abut. shown)



SECTION C-C

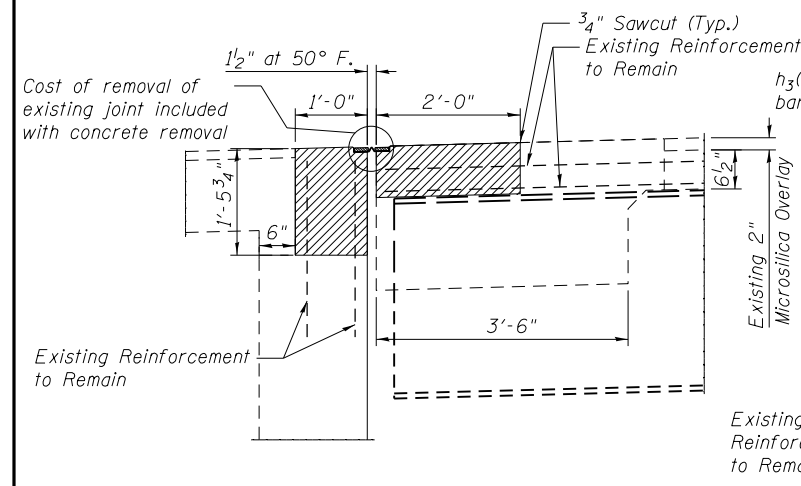
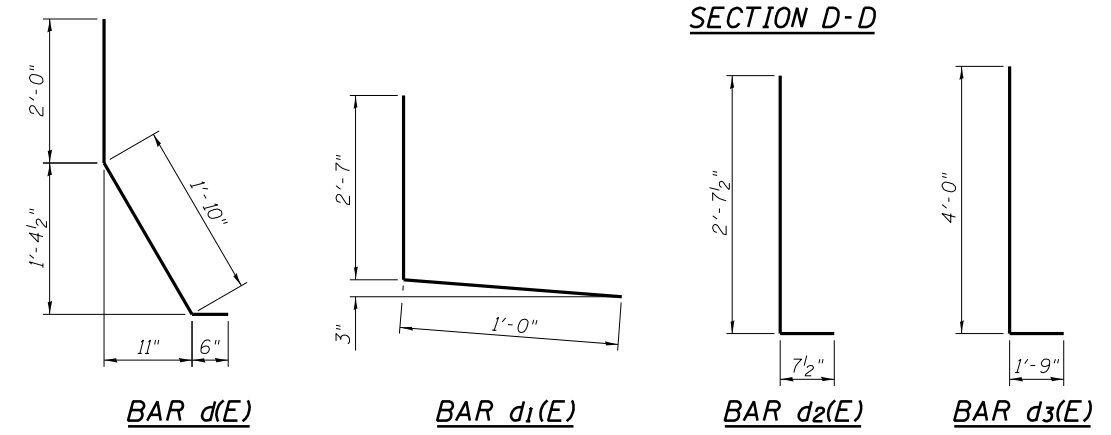


END PARAPET DETAIL

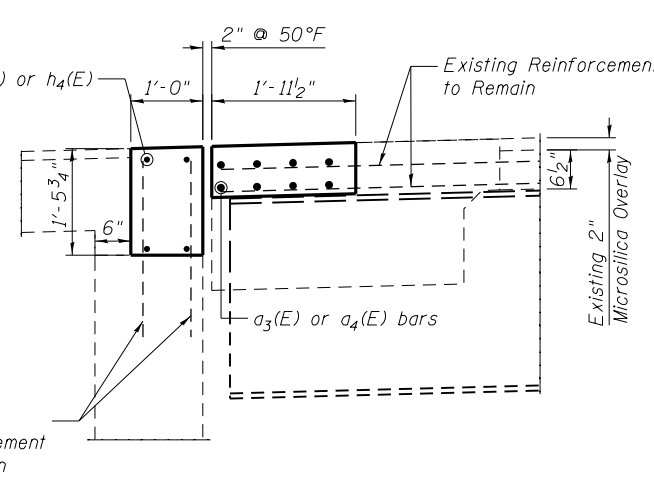


SECTION D-D

MINIMUM BAR LAP
#6 bar = 3'-1"



SECTION A-A



SECTION B-B

SUPERSTRUCTURE BILL OF MATERIAL

Bar	No.	Size	Length	Shape
a3(E)	16	#6	23'-1"	—
a4(E)	8	#6	9'-0"	—
d(E)	6	#5	4'-4"	L
d1(E)	6	#4	3'-7"	L
d2(E)	6	#4	3'-3"	L
d3(E)	4	#4	5'-9"	L
h3(E)	8	#6	22'-6"	—
h4(E)	4	#6	9'-0"	—
Bar Splicers	Each		24	
Reinforcement Bars, Epoxy Coated	Pound		1060	
Concrete Superstructure	Cu. Yds.		7.3	
Concrete Removal	Cu. Yds.		7.4	
Performed Strip Seal	Foot		56	

Bars indicated thus 4x2 - #6 etc. indicates 4 lines of bars with 2 lengths per line.

BENTON & ASSOCIATES, INC.

FILE NAME = P:\10e2166-2\ Design\ Plans\ 082-0160 & 082-0161	USER NAME =	DESIGNED - MBH	REVISED - 10/3/13
0820160-76022-006-Joint.dgn	PLOT SCALE =	CHECKED - SJH	REVISED -
	PLOT DATE	DRAWN - MBH	REVISED -
		CHECKED - SJH	REVISED -

STATE OF ILLINOIS DEPARTMENT OF TRANSPORTATION

CONCRETE REMOVAL & REPLACEMENT STRUCTURE NO. 082-0160

SHEET NO. 7 OF 10 SHEETS

F.A.I. RTE.	SECTION	COUNTY	TOTAL SHEETS	SHEET NO.
64	82-2HBI	ST. CLAIR	208	173
CONTRACT NO. 76022				
FED. ROAD DIST. NO. 8 ILLINOIS FED. AID PROJECT				