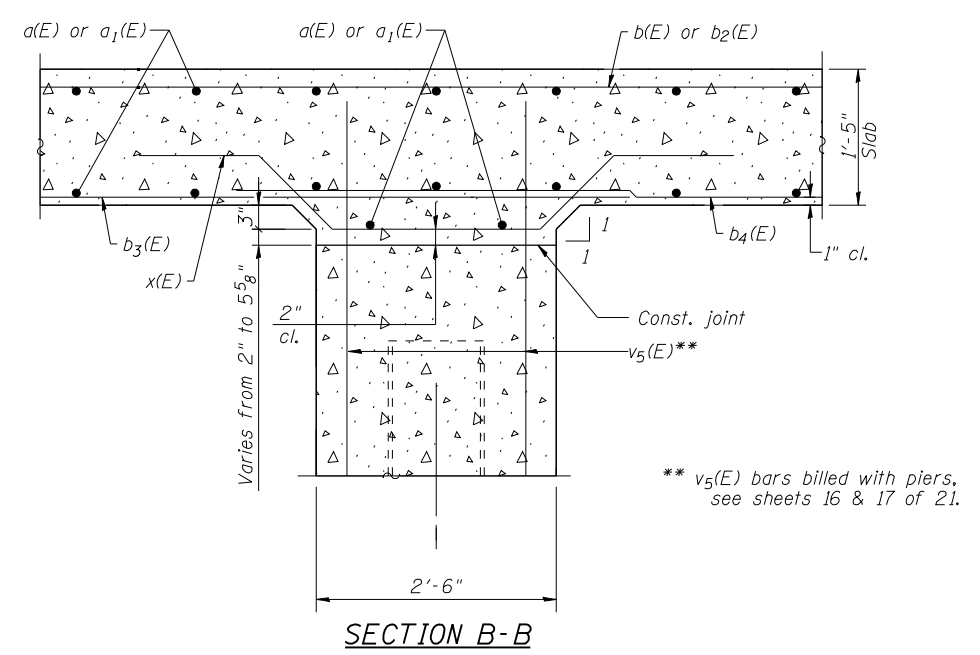
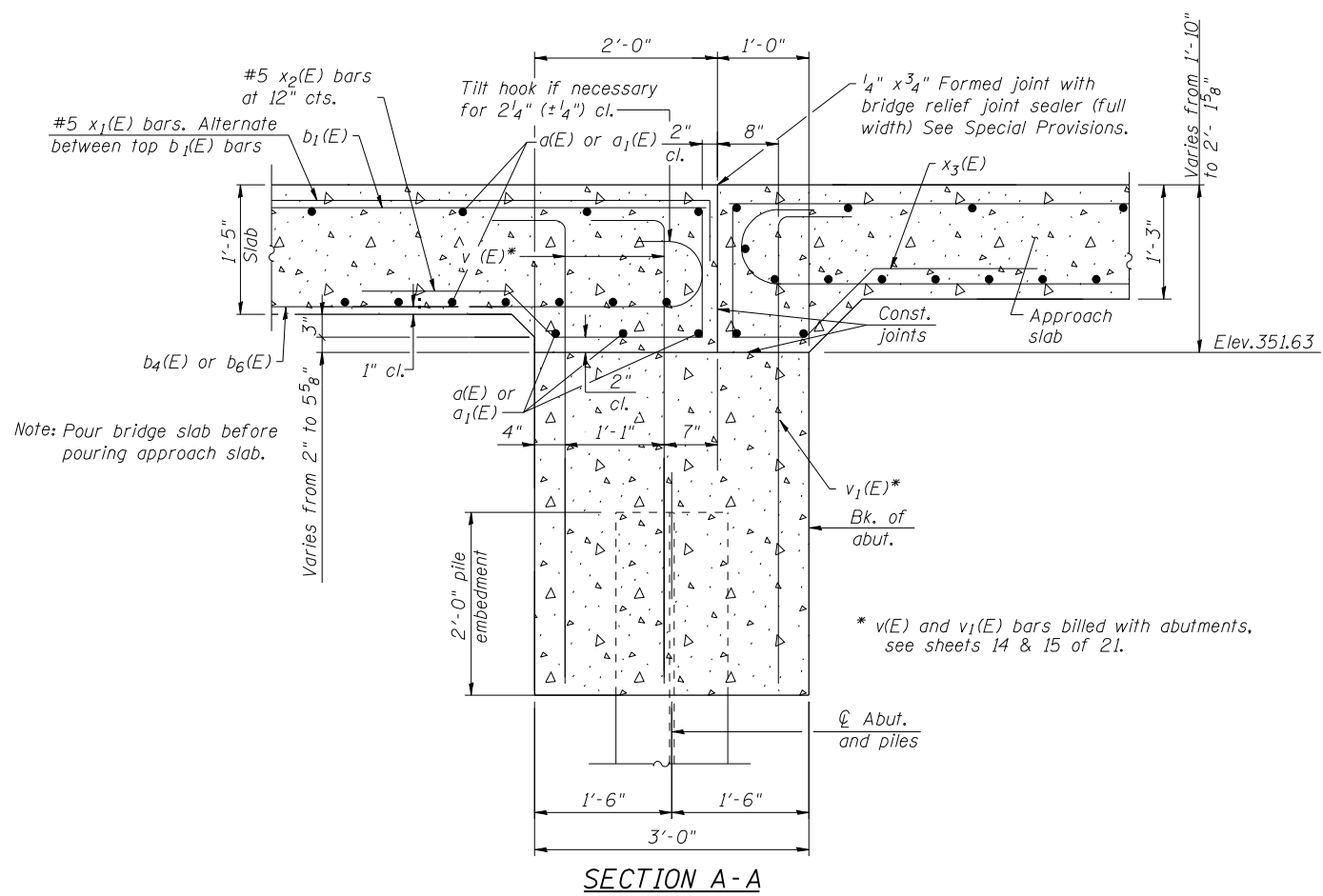


**SUPERSTRUCTURE
BILL OF MATERIAL**

Bar	No.	Size	Length	Shape
a(E)	177	#5	16'-10"	—
a ₁ (E)	177	#5	17'-10"	—
a ₂ (E)	132	#6	6'-6"	—
a ₃ (E)	24	#5	4'-0"	—
b(E)	74	#9	40'-0"	—
b ₁ (E)	74	#5	14'-10"	—
b ₂ (E)	74	#9	11'-0"	—
b ₃ (E)	29	#9	42'-9"	—
b ₄ (E)	58	#9	34'-6"	—
b ₅ (E)	29	#9	23'-0"	—
b ₆ (E)	58	#9	24'-3"	—
d(E)	218	#5	5'-7"	⌋
d ₁ (E)	218	#5	8'-8"	⌋
e(E)	56	#4	15'-2"	—
e ₁ (E)	28	#4	18'-6"	—
e ₂ (E)	6	#4	34'-3"	—
e ₃ (E)	6	#8	36'-4"	—
x(E)	74	#5	6'-10"	—
x ₁ (E)	74	#5	8'-10"	—
x ₂ (E)	74	#5	5'-6"	—
Reinforcement Bars, Epoxy Coated	Pound		46,340	
Concrete Superstructure	Cu. Yd.		212.4	
Bar Splicers	Each		177	

For details of Bar Splicers, see sheet 19 of 21.
Name Plate to be mounted on inside face of parapet, see sheet 1 of 21.
See sheet 9 of 21 for bar bending details.



PRINT DRIVER = LUD-EBR-041L
 LUD-EBR-041L
 MAKE NAME = PLOT
 FILE NAME = 8/2/2013-78230-10-5r-01.dwg



USER NAME = has	DESIGNED - SHL 12/12	REVISED -
ESCA PROJECT NO. 988.12	CHECKED - RDP 03/13	REVISED -
PLOT SCALE = 0:2' = 1\"/>		
PLOT DATE = 8/2/2013 11:38:07 AM	CHECKED - RDP 07/13	REVISED -

**STATE OF ILLINOIS
DEPARTMENT OF TRANSPORTATION**

**SUPERSTRUCTURE DETAILS
STRUCTURE NO. 076-0032**

SHEET NO. 10 OF 21 SHEETS

F.A.P. RTE.	SECTION	COUNTY	TOTAL SHEETS	SHEET NO.
885	112B-1	POPE	56	32
ILLINOIS FED. AID PROJECT AID			CONTRACT NO. 78230	