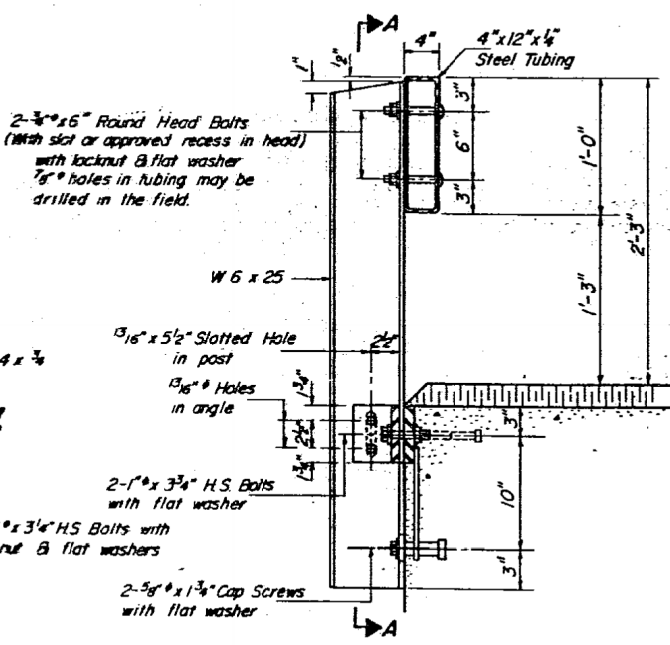
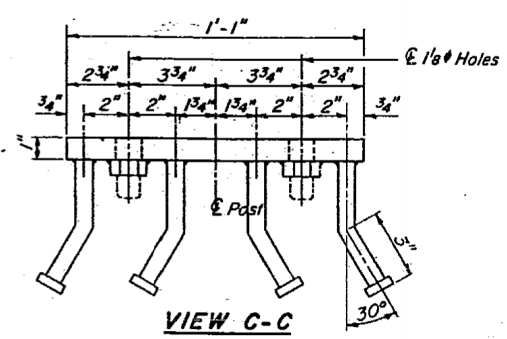


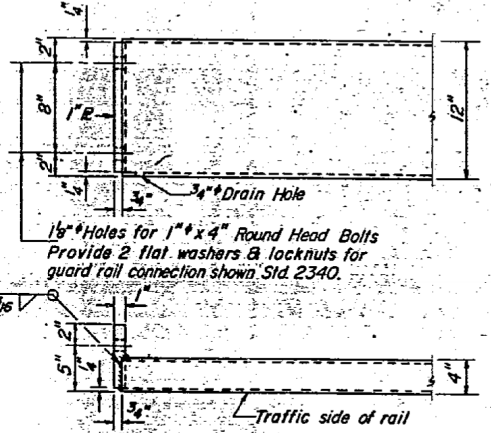
SECTION A-A



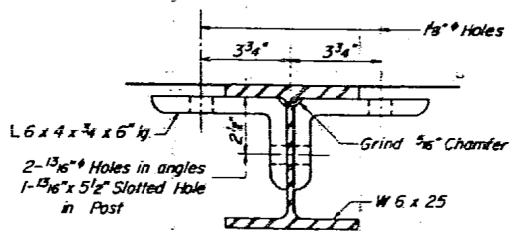
SECTION AT RAIL POST



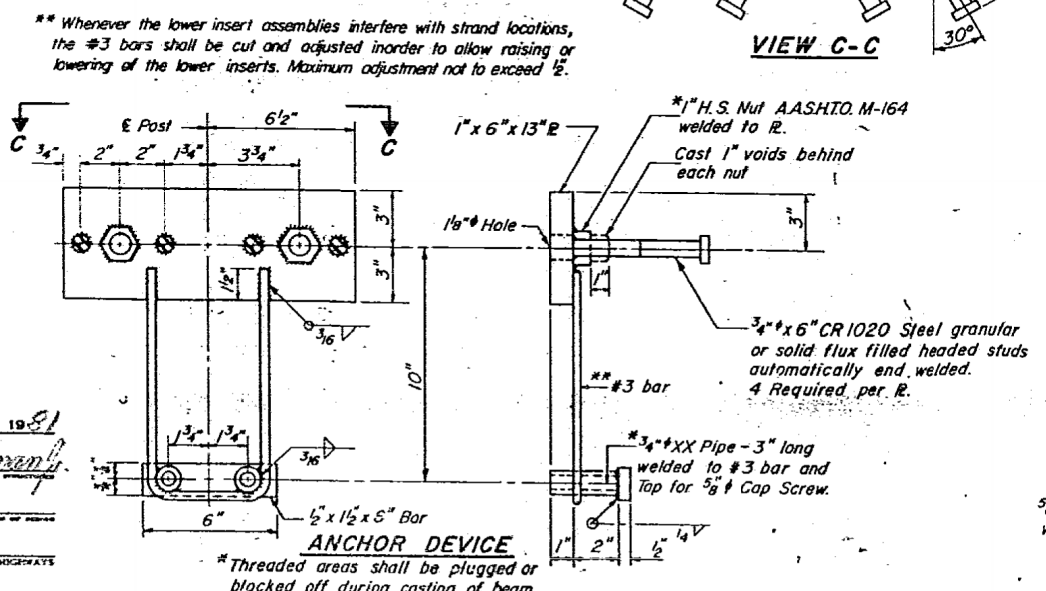
VIEW C-C



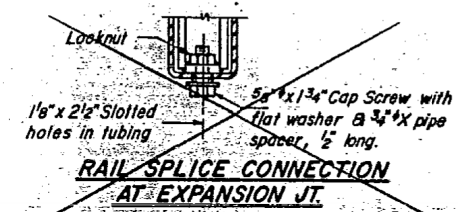
END OF RAIL DETAILS



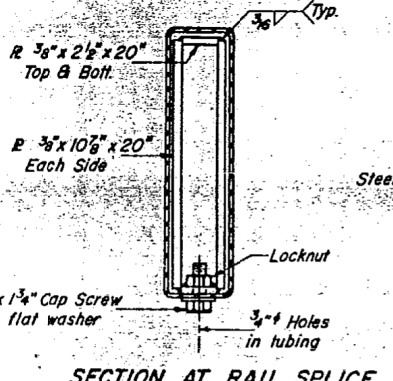
SECTION B-B



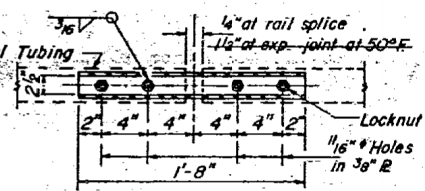
ANCHOR DEVICE



RAIL SPLICE CONNECTION AT EXPANSION JT.



SECTION AT RAIL SPLICE



PLAN - BOTT. SPLICE PL. TYPICAL

NOTES

Hollow structural steel tubing shall conform to the requirements of A.S.T.M. designation A-500 Grade B Structural Steel Tubing.
 All other steel shapes and plates shall conform to the requirements of A.A.S.H.T.O. M-183 except posts and angles shall conform to A.A.S.H.T.O. M-223, Grade 50.
 Bolts, cap screws, and nuts shall conform to the requirement of A.S.T.M. designation A-307 except for high strength bolts, nuts and washers noted which shall conform to A.A.S.H.T.O. M-164.
 All bolts, nuts, cap screws, washers and lock washers shall be galvanized in accordance with A.A.S.H.T.O. M-232.
 All posts, railing, rail splices, anchor devices and angles shall be galvanized after shop fabrication in accordance with A.A.S.H.T.O. M-111 and A.S.T.M. A-385. Galvanized rail shall not be painted.
 Railing shall be in accordance with Section 508 of the Standard Specifications, except as noted, and shall be paid for at the contract unit price per linear foot for "STEEL RAILING, TYPE S-1".
 All field drilled holes shall be coated with an approved zinc rich paint before erection.
 The lower portion of the post flange in contact with concrete shall receive two coats of asphalt paint conforming to Section 714.08 Type B or place 1/8" fabric bearing pad between the post and concrete.
 The 3/4" high strength bolts used to connect the 6 x 4 x 3/4 angles to the post shall be tightened in accordance with Article 507.04(g)(3) of the Standard Specifications. The 1" high strength bolts connecting the angles to the concrete shall be tightened to a snug fit and given an additional 1/8 turn. The 5/8" cap screws in bottom of posts shall be tightened to a snug fit only.

BILL OF MATERIAL

Item	Unit	Quantity
Steel Railing, Type S-1	Lin. Ft.	232

TYPE S-1
STEEL RAILING
F.A.R.T.885 SEC.112 B-DR
POPE COUNTY
STA.913+50.00

DESIGNED: *Byron V. Hark*
 CHECKED: *Stuart Owen*
 DRAWN: *SA*
 CHECKED: *BVG*
 EXAMINED: *April 8, 1981*
 PASSED: *Carl E. Hamman*
 APPROVED: _____
 DIRECTOR OF HIGHWAYS

R-23A 8-30-80 (10'-9" Maximum Post Spacing)

FOR INFORMATION ONLY

EXISTING STRUCTURE PLANS - FOR INFORMATION ONLY
STRUCTURE NO. 076-0009

F.A.P. RTE.	SECTION	COUNTY	TOTAL SHEETS	SHEET NO.
885	112B-1	POPE	56	49
SCALE:		SHEET NO. 6 OF 8 SHEETS		STA. TO STA.
FED. ROAD DIST. NO.		ILLINOIS FED. AID PROJECT AID		CONTRACT NO. 78230



USER NAME = has	DESIGNED - JMS	REVISED -
ESCA PROJECT NO. 988.12	DRAWN - HAS	REVISED -
PLOT SCALE = 0.1667 / IN.	CHECKED - RDP	REVISED -
PLOT DATE = 8/2/2013 11:44:20 AM	DATE - 03/13	REVISED -