

| F.A.P. RTE. | SECTION | COUNTY | TOTAL SHEETS | SHEET NO. |
|---------------------|---------|----------|--------------------|-----------|
| 885 | 112B-1 | POPE | 56 | 1 |
| FED. ROAD DIST. NO. | | ILLINOIS | CONTRACT NO. 78230 | |

INDEX OF SHEETS

| SHEET NO. | DESCRIPTION |
|---------------------------------|---|
| ROADWAY PLANS | |
| 1. | COVER SHEET |
| 2. | GENERAL NOTES AND STANDARDS |
| 3.-8. | SUMMARY OF QUANTITIES |
| 9.-12. | TYPICAL SECTIONS |
| 13. | SCHEDULES OF QUANTITIES |
| 14.-16. | IL ROUTE PLAN AND PROFILE |
| 17.-18. | STAGE CONSTRUCTION PLAN AND DETAILS |
| 19. | EROSION CONTROL PLAN |
| 20. | SEEDING AND MULCHING DETAILS |
| 21. | STEP CONSTRUCTION ON EXISTING FILL DETAILS |
| 22. | BUTT JOINT DETAIL |
| STRUCTURE PLANS | |
| 23. | GENERAL PLAN & ELEVATION |
| 24. | GENERAL DATA |
| 25. | STAGE CONSTRUCTION DETAILS |
| 26. | TEMPORARY CONCRETE BARRIER FOR STAGE CONSTRUCTION |
| 27. | TOP OF SLAB ELEVATIONS |
| 28. | TOP OF WEST APPROACH SLAB ELEVATIONS |
| 29. | TOP OF EAST APPROACH SLAB ELEVATIONS |
| 30. | SUPERSTRUCTURE |
| 31.-32. | SUPERSTRUCTURE DETAILS |
| 33.-34. | BRIDGE APPROACH SLAB DETAILS |
| 35. | DRAINAGE SCUPPER, DS-12M10 |
| 36. | WEST ABUTMENT |
| 37. | EAST ABUTMENT |
| 38. | PIER 1 |
| 39. | PIER 2 |
| 40. | HP PILE DETAILS |
| 41. | BAR SPLICER ASSEMBLY DETAILS |
| 42.-43. | BORING LOGS |
| EXISTING STRUCTURE PLANS | |
| SN 076-0009 | |
| 44.-51. | EXISTING STRUCTURE PLANS - FOR INFORMATION ONLY |
| CROSS SECTIONS | |
| 52.-56. | IL RTE 146 CROSS SECTIONS |

STATE OF ILLINOIS
DEPARTMENT OF TRANSPORTATION
DIVISION OF HIGHWAYS

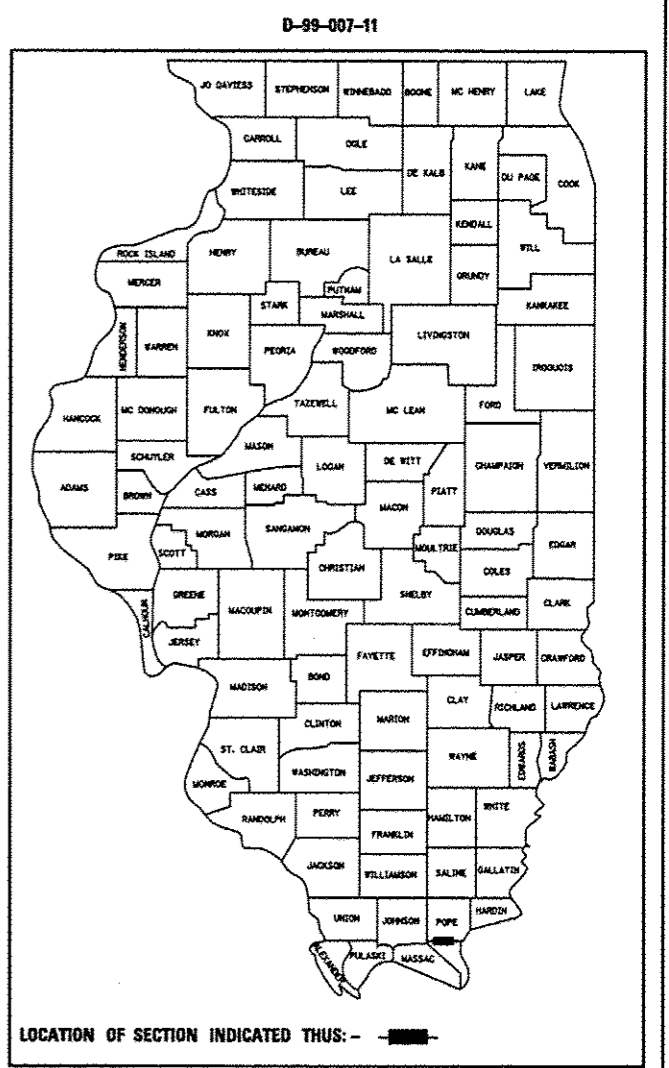
PROPOSED HIGHWAY PLANS

FAP ROUTE 885 (IL 146)
SECTION 112B-1
PROJECT ACF-0885(048)
POPE COUNTY

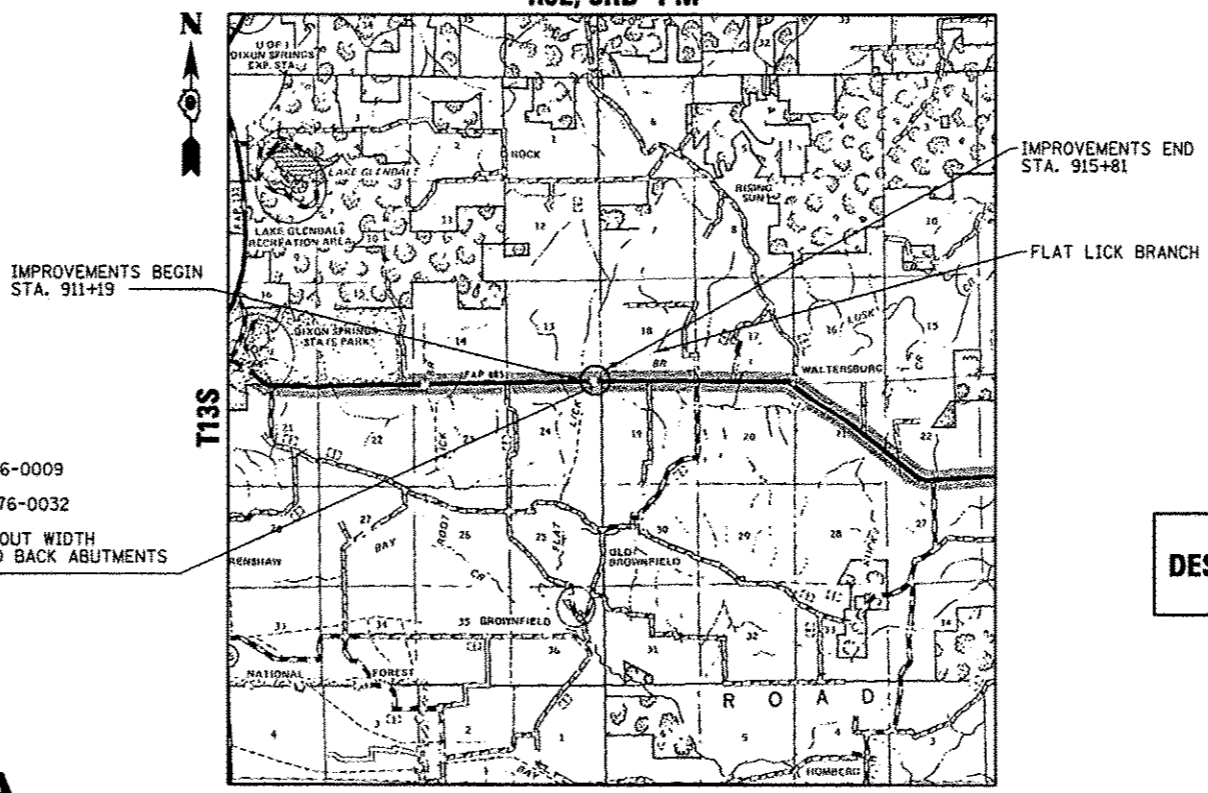
C - 99 - 009 - 11

**BRIDGE REPLACEMENT
OVER FLAT LICK BRANCH**

R5E, 3RD PM



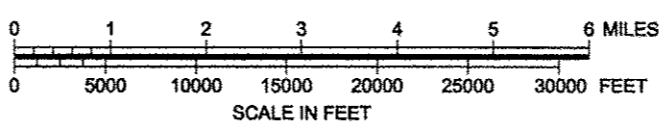
FUNCTIONAL CLASSIFICATION: MINOR ARTERIAL (NON URBAN)
DESIGN SPEED: 55 mph
POSTED SPEED: 55 mph
ADT: 1,870 (2011)
PV: 93.8%
TRUCKS: 6.2%
TOWNSHIP: ROAD DISTRICT NO. 2



EXISTING SN 076-0009
 STA. 913+50.00
 PROPOSED SN 076-0032
 STA. 913+50.00
 35'-2" OUT TO OUT WIDTH
 101'-0" BACK TO BACK ABUTMENTS
 (0° SKEW)

**DESIGN
DESIGNATION
N.A.**

LOCATION MAP



GROSS LENGTH = 462 FT. = 0.088 MI.
NET LENGTH = 462 FT. = 0.088 MI.

J.U.L.I.E.
JOINT UTILITY LOCATION INFORMATION FOR EXCAVATION
 1-800-892-0123
 OR 811

DISTRICT 9 NO. (618) 549-2171
PROJECT ENGINEER: DAVID PICHE
CONTRACT NO. 78230



Richard D. Payne
 DATE: 08/05/2013
 ILLINOIS PROFESSIONAL LICENSE NO. 37421
 (EXPIRATION DATE: 11-30-13)

STATE OF ILLINOIS
 DEPARTMENT OF TRANSPORTATION
 DIVISION OF HIGHWAYS

SUBMITTED August 14 2013
[Signature]
 DEPUTY DIRECTOR OF HIGHWAYS, REGION ENGINEER

October 4 2013
[Signature]
 ENGINEER OF DESIGN AND ENVIRONMENT

October 4 2013
[Signature]
 DIRECTOR OF HIGHWAYS, CHIEF ENGINEER

**PRINTED BY THE AUTHORITY
OF THE STATE OF ILLINOIS**