

STATE OF ILLINOIS
DEPARTMENT OF TRANSPORTATION
DIVISION OF HIGHWAYS

PLANS FOR PROPOSED
LOCAL AGENCY IMPROVEMENT
FEDERAL-AID SECONDARY PROJECT

VILLAGE OF CREVE COEUR
SIGN UPGRADES
SECTION: 12-00042-00-SG
PROJECT: HSIP-5093(167)
TAZEVELL COUNTY
C-94-008-13

CONTRACT NO. 89629



INDEX OF SHEETS

- 1 COVER SHEET
- 2 SUMMARY OF QUANTITIES

HIGHWAY STANDARDS

- 701006-04 OFF-ROAD OPERATIONS, 2L, 2W, 15' TO 24" FROM PAVEMENT EDGE
- 701101-03 OFF-ROAD OPERATIONS, MULTILANE, 15' TO 24" FROM PAVEMENT EDGE
- 701301-04 LANE CLOSURE, 2L, 2W, SHORT TIME OPERATIONS
- 701901-02 TRAFFIC CONTROL DEVICES
- 720001-01 SIGN PANEL MOUNTING DETAILS
- 720006-03 SIGN PANEL ERECTION DETAILS
- 728001-01 TELESCOPING STEEL SIGN SUPPORT

UTILITIES

ATT
WILLIAM CONOVER
309-688-3317

AMEREN CILCO
KENT KOWALSKA
309-677-6327

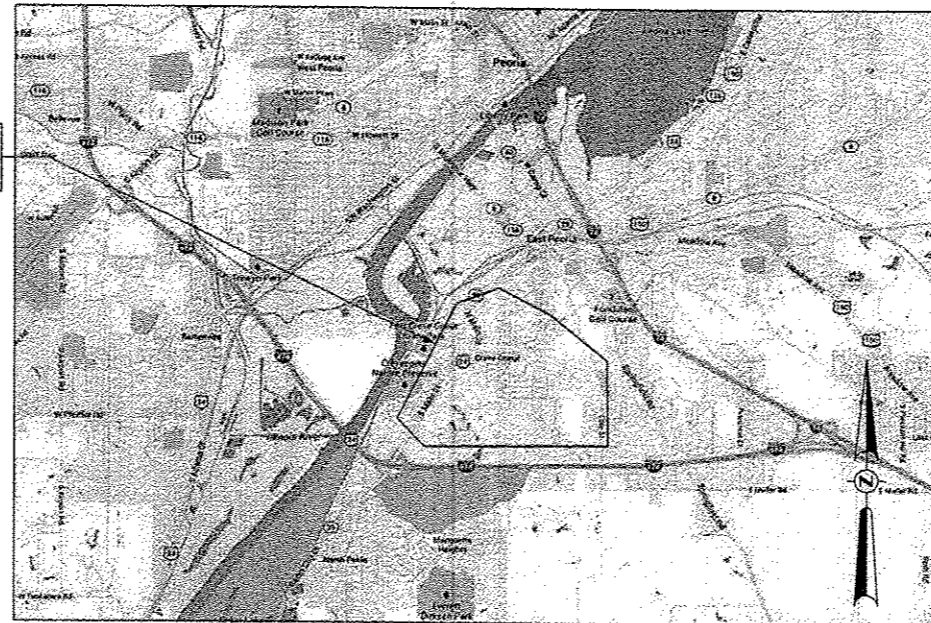
VILLAGE OF CREVE COEUR
WATER - MARK MENARD
309-613-3155

VILLAGE OF CREVE COEUR
SANITARY - JEFF SHEFFLER
309-694-4101

PAETEC
MARK MILLS
217-676-7194 X240

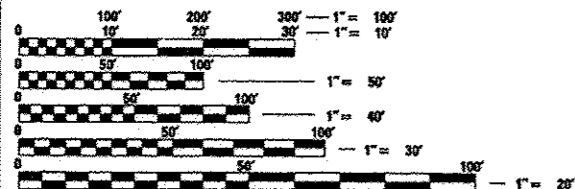
COMCAST
RAY DE CROIX
309-686-2618

PROJECT LOCATION
VILLAGE OF CREVE COEUR



LOCATION MAP

(NOT TO SCALE)



FULL SIZE PLANS HAVE BEEN PREPARED USING STANDARD ENGINEERING SCALES. REDUCED SIZED PLANS WILL NOT CONFORM TO STANDARD SCALES. IN MAKING MEASUREMENTS ON REDUCED PLANS, THE ABOVE SCALES MAY BE USED.



PRINTED BY THE AUTHORITY OF THE STATE OF ILLINOIS

APPROVED: *Fred Long*
VILLAGE OF CREVE COEUR, MAYOR

PASSED: *08-12-2013*
Tom Zarbiec
DISTRICT FOUR ENGINEER OF LOCAL ROADS & STREETS

Releasing For Bid Based on Limited Review: *8-12-2013*
Joel E. Crockett
DEPUTY DIRECTOR OF HIGHWAYS, REGION THREE ENGINEER

STATE OF ILLINOIS
DEPARTMENT OF TRANSPORTATION

Alicia Hermann
ALICIA M. HERMANN
08/16/13 11/30/13
DATE EXPIRES

HERMANN & ASSOCIATES, LLC
CONSULTING ENGINEERS

4603 NORTH GALENA ROAD
PEORIA HEIGHTS, ILLINOIS 61619
PHONE: (309) 697-5566
FAX: (309) 697-0571
ILLINOIS PROFESSIONAL DESIGN FIRM NO. 184.004714

TRANSPORTATION • MUNICIPAL ENGINEERING • LAND DEVELOPMENT
ASBESTOS INSPECTION • CONSTRUCTION OBSERVATION

SUMMARY OF QUANTITIES			
PAY ITEM NUMBER	PAY ITEM DESCRIPTION	UNIT	QUANTITY
67100100	MOBILIZATION	L SUM	1.0
72000100	SIGN PANEL - TYPE 1	SQ FT	2462.2
72000200	SIGN PANEL - TYPE 2	SQ FT	10.0
72800100	TELESCOPING STEEL SIGN SUPPORT	FOOT	5745.0
X7010216	TRAFFIC CONTROL AND PROTECTION, (SPECIAL)	L SUM	1.0
X7240300	SIGN REMOVAL	EACH	433.0
Z0051398	REMOVE EXISTING SIGN POST	EACH	325.0

REGULATORY			
DESCRIPTION	MUTCD #	SIZE (INCHES)	QUANTITY (EACH)
Stop	R1-1	30 x 30	181
Yield	R1-2	36 x 36 x 36	1
All Way Plaque	R1-3P	18 x 6	44
Speed Limit 25 MPH	R2-1	24 x 30	81
Speed Limit 30 MPH	R2-1	24 x 30	7
Fines Higher	R2-6P	24 x 18	3
No Right Turn Symbol	R3-1	24 x 24	2
No Left Turn Symbol	R3-2	24 x 24	2
No U-Turn Symbol	R3-4	24 x 24	1
Left Lane Must Turn Left	R3-7L	30 x 30	1
Advance Intersection Lane Control	R3-8b	48 x 30	1
Keep Right of Median	R4-7	24 x 30	1
Do Not Enter	R5-1	30 x 30	4
No Trucks	R5-2a	24 x 24	3
Weight Limit 7.5 Tons	R12-1	24 x 30	10
Weight Limit 17.5 Tons	R12-1	24 x 30	1
School Crossing	S1-1	36 x 36	4
School Speed Limit	S4-I100	24 x 48	3
End School Zone	S5-2	24 x 30	3
Contingent Quantity	-	30 x 30	10

WARNING			
DESCRIPTION	MUTCD #	SIZE (INCHES)	QUANTITY (EACH)
Sharp Left	W1-1L	30 x 30	2
Sharp Right	W1-1R	30 x 30	1
Curve Left	W1-2L	30 x 30	2
Reverse Turn Right	W1-3R	30 x 30	1
Winding Road Right	W1-5R	30 x 30	1
Winding Road Left	W1-5L	30 x 30	1
One Direction Large Arrow Left	W1-6L	48 x 24	2
Two Direction Large Arrow	W1-7	48 x 24	2
Stop Ahead Symbol	W3-1	30 x 30	1
Stop Ahead Text	W3-1a	30 x 30	3
Divided Highway	W6-1	36 x 36	1
Grade Crossing Advance Warning	W10-1	36 DIAM.	7
Deer Crossing	W11-3	30 x 30	4
Fire Station	W11-8	30 x 30	4
Warning Speed Plaque 15 MPH	W13-1P	18 x 18	2
Dead End	W14-1	30 x 30	32
No Outlet	W14-2	30 x 30	7
Slow	-	30 x 30	1
Impassable During High Water	-	36 x 36	2
Rough Road Use At Own Risk	-	36 x 36	1
Rough Road Ahead	-	36 x 36	1
Contingent Quantity	-	30 x 30	10
TOTAL			451

FILE NAME *	USER NAME * #USER*	DESIGNED - JAL	REVISED -
#FILE#		DRAWN - JAL	REVISED -
		CHECKED - AMH	REVISED -
		DATE - JULY 2013	REVISED -

STATE OF ILLINOIS
DEPARTMENT OF TRANSPORTATION

SUMMARY OF QUANTITIES

SCALE: SHEET NO. OF SHEETS STA. TO STA.

F.A. RTE.	SECTION	COUNTY	TOTAL SHEETS	SHEET NO.
	12-00042-00-SC	TAZEWELL	2	2
SIGN UPGRADES		CONTRACT NO. 89629		
FED ROAD DIST NO. 4 (ILLINOIS)		FED. AID PROJECT #SIP-5093 (467)		