

STATE OF ILLINOIS  
DEPARTMENT OF TRANSPORTATION

P.A. RITE	SECTION	COUNTY	TOTAL SHEETS	SHEET NO.
VAR.		VARIOUS	10	1
		RELACIS	CONTRACT NO. 66J86	

D3 BRIDGE DECK SEALING FY 2020

INDEX OF SHEETS

- ROADWAY PLANS**
- 1 COVER SHEET
  - 2 GENERAL NOTES
  - 3 SUMMARY OF QUANTITIES
  - 4-6 SCHEDULES
  - 7-9 LOCATION MAPS
  - 10 DETAILS

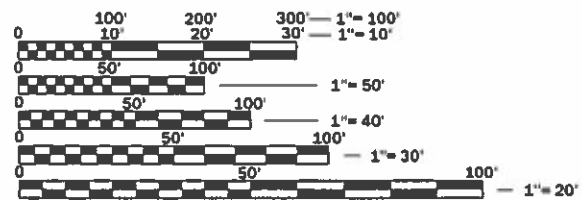
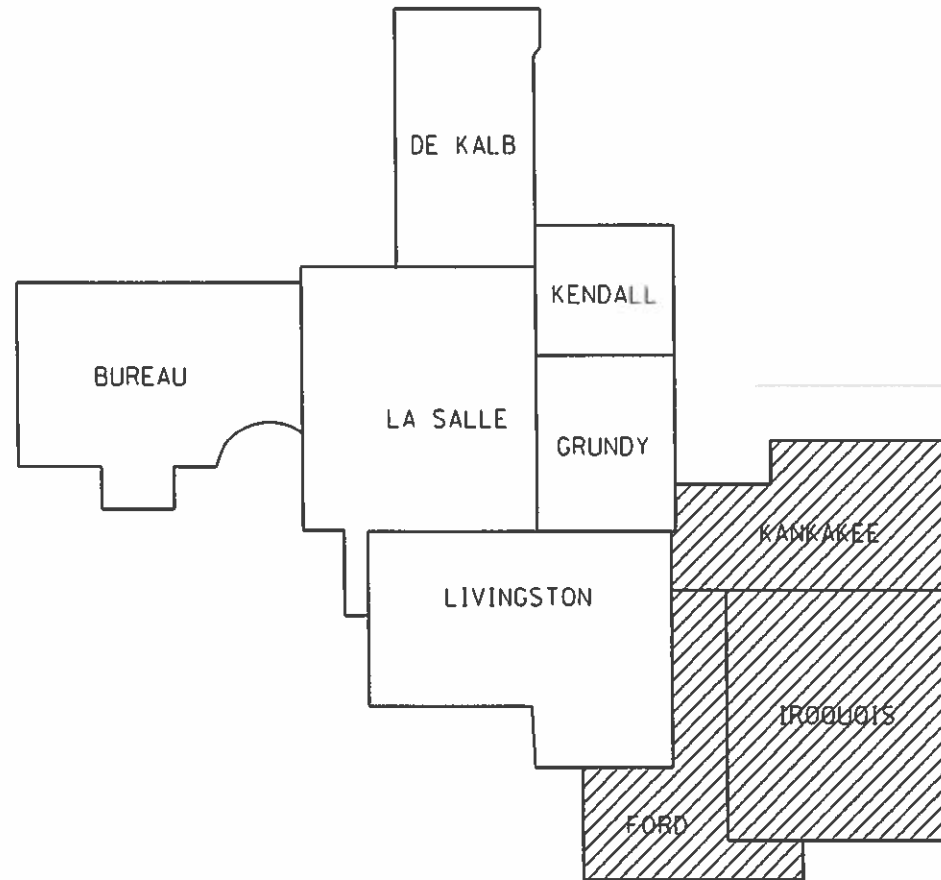
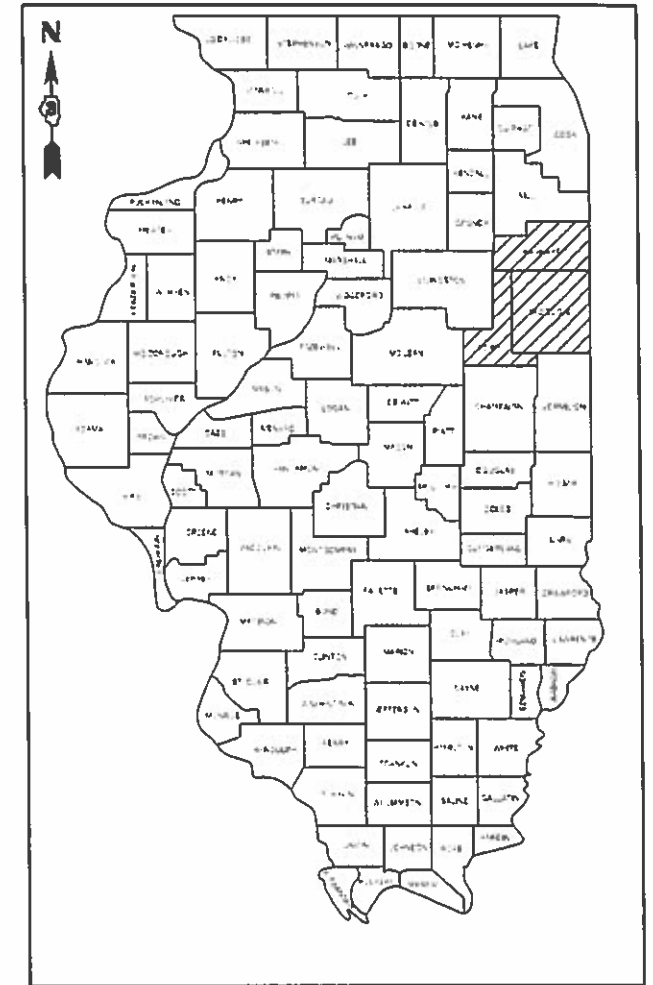
**LIST OF ILLINOIS DOT HIGHWAY STANDARDS**

- 0C0001-07 STANDARD SYMBOLS, ABBREVIATIONS AND PATTERNS
- 701201-05 LANE CLOSURE, 2L, 2V, DAY ONLY, FOR SPEEDS ≥ 45 MPH
- 701400-09 APPROACH TO LANE CLOSURE, FREEWAY/EXPRESSWAY
- 701406-12 LANE CLOSURE, FREEWAY/EXPRESSWAY, DAY OPERATIONS ONLY
- 701411-09 LANE CLOSURE, MULTILANE, AT ENTRANCE OR EXIT RAMP FOR SPEEDS ≥ 45 MPH
- 701428-01 TRAFFIC CONTROL SETUP AND REMOVAL, FREEWAY/EXPRESSWAY
- 701501-06 URBAN LANE CLOSURE, 2L, 2V, UNDIVIDED
- 701601-09 URBAN LANE CLOSURE, MULTILANE, 1V OR 2V WITH NONTRAVERSABLE MEDIAN
- 701602-10 URBAN LANE CLOSURE, MULTILANE, 2V WITH BIDIRECTIONAL LEFT TURN LANE
- 701606-10 URBAN LANE CLOSURE, MULTILANE, 2V WITH MOUNTABLE MEDIAN
- 701901-08 TRAFFIC CONTROL DEVICES

# PROPOSED HIGHWAY PLANS

## DISTRICTWIDE D3 BRIDGE DECK SEALING FY 2020 PROJECT STP-YHK6(357) BRIDGE DECK SEALING VARIOUS COUNTIES

C-93-070-19



FULL SIZE PLANS HAVE BEEN PREPARED USING STANDARD ENGINEERING SCALES. REDUCED SIZED PLANS WILL NOT CONFORM TO STANDARD SCALES. IN MAKING MEASUREMENTS ON REDUCED PLANS, THE ABOVE SCALES MAY BE USED.

J.U.L.I.E.  
JOINT UTILITY LOCATION INFORMATION FOR EXCAVATION  
1-800-892-0123  
OR 811

PROJECT ENGINEER: BRAD DUNCAN, PE  
UNIT CHIEF: ALEX NUGENT  
DISTRICT 3 NO. (815) 434-6131  
CONTRACT NO. 66J86

STATE OF ILLINOIS  
DEPARTMENT OF TRANSPORTATION

SUBMITTED 10/16 2019  
*Richard Thomas*  
REGIONAL ENGINEER

Oct 4 2019  
*Scott E. Etk*  
ENGINEER OF DESIGN AND ENVIRONMENT

Oct 4 2019  
*Paul P. Chaf*  
DIRECTOR OF HIGHWAYS PROJECT IMPLEMENTATION

PRINTED BY THE AUTHORITY OF THE STATE OF ILLINOIS

**GENERAL NOTES**

ANY REFERENCE TO A STANDARD IN THESE PLANS SHALL BE INTERPRETED TO MEAN THE EDITION AS INDICATED BY THE SUBNUMBER SHOWN IN THE LIST OF STANDARDS OR THE COPY INCLUDED IN THESE PLANS.

THE ENGINEER WILL BE THE SOLE JUDGE CONCERNING CURING TIME FOR THE BRIDGE DECK CONCRETE SEALER.

STATE OF ILLINOIS  
DEPARTMENT OF TRANSPORTATION  
DISTRICT THREE  
AS BUILT INFORMATION

\_\_\_\_\_  
SUPERVISING CONSTRUCTION FIELD ENGINEER

\_\_\_\_\_  
RESIDENT ENGINEER / TECHNICIAN

START & END DATES  
OF CONSTRUCTION:

INSPECTORS:

\_\_\_\_\_  
\_\_\_\_\_  
\_\_\_\_\_

STATE OF ILLINOIS  
DEPARTMENT OF TRANSPORTATION  
DISTRICT THREE

PREPARED BY: Tom Beaulieu  
DISTRICT STUDIES & PLANS ENGINEER

DATE: 8-15-19

EXAMINED BY: Kyle Valiga  
DISTRICT CONSTRUCTION ENGINEER

Michael A. Sant  
DISTRICT MATERIALS ENGINEER

Tom Beaulieu  
DISTRICT OPERATIONS ENGINEER

FILE NAME =	USER NAME = nugenraj	DESIGNED -	REVISED -	<b>STATE OF ILLINOIS DEPARTMENT OF TRANSPORTATION</b>	<b>GENERAL NOTES</b>	F.A. -	SECTION	COUNTY	TOTAL	SHEET	
pw01\planroom.dot\illinois.gov\FW\DOT\Documents\DOT	Offices\District 3\Projects\D366.86\CADData\D366.86-shi-co-ver	DRAWN -	REVISED -			VAR		VARIOUS	10	2	
Default	PLOT SCALE = 100.0000' = 1"	CHECKED -	REVISED -			CONTRACT NO. 66J86					
	PLOT DATE = 8/7/2019	DATE -	REVISED -			SCALE:	SHEET 1	OF 1	SHEETS	STA.	TO STA.

MODEL: Default  
 FILE: \\nls01-pub\pubroom\data\illinois.gov\PWIDOT\Documents\DOT\_Offices\District\_3\Projects\136686\861C0000\136686-rt-deck.dgn

CODE NO.	ITEM	UNIT	TOTAL QUANTITY	CONSTR. CODE
				80% FEDERAL 20% STATE BRIDGE 0047
67100100	MOBILIZATION	L SUM	1	1
70100420	TRAFFIC CONTROL AND PROTECTION, STANDARD 701411	EACH	4	4
70100450	TRAFFIC CONTROL AND PROTECTION, STANDARD 701201	L SUM	1	1
70100700	TRAFFIC CONTROL AND PROTECTION, STANDARD 701406	L SUM	1	1
70102620	TRAFFIC CONTROL AND PROTECTION, STANDARD 701501	L SUM	1	1
70102625	TRAFFIC CONTROL AND PROTECTION, STANDARD 701606	L SUM	1	1
70102630	TRAFFIC CONTROL AND PROTECTION, STANDARD 701601	L SUM	1	1
70102632	TRAFFIC CONTROL AND PROTECTION, STANDARD 701602	L SUM	1	1
X5870015	BRIDGE DECK CONCRETE SEALER	SQ FT	1007779	1007779

USER NAME = nugentaj	DESIGNED -	REVISED -
	DRAWN -	REVISED -
PLOT SCALE = 100.0000' / in.	CHECKED -	REVISED -
PLOT DATE = 8/7/2019	DATE -	REVISED -

**STATE OF ILLINOIS  
DEPARTMENT OF TRANSPORTATION**

**SUMMARY OF QUANTITIES**

SCALE: SHEET 1 OF 1 SHEETS STA. TO STA.

F.A.-RTE.	SECTION	COUNTY	TOTAL SHEETS	SHEET NO.
	*	VARIOUS	10	3
			CONTRACT NO. 66J86	
		ILLINOIS	FED. AID PROJECT	

CONCRETE SEALER - FORD COUNTY									
STRUCTURE NUMBER	FACILITY CARRIED	APPROXIMATE LOCATION	FEATURE CROSSED	DECK WIDTH FEET	PARAPET SURFACE FEET	MEDIAN SURFACE FEET	DECK LENGTH FEET	SEAL AREA SQ FT	TRAFFIC CONTROL AND PROTECTION STANDARD
FORD COUNTY NON-INTERSTATE									
027-0010	ILL 9	JCT I-57 AND ILL 9	I-57	37.5	4.6	18	221.9	13,336	701201
027-0026	ILL 54	2.1 MI S OF ILL 9 & 47	DRAINAGE DITCH	40	2		22.5	945	701201
027-0028	CH 5	2.8 MI S OF ILL 9	I-57	26.5	5		233.8	7,365	701201
027-0044	ILL 116	1.1 MI E OF ILL 115	KELLY CREEK	32			106	3,392	701201
027-0047	TR 72	2.4 MI N OF ILL 9	I-57	26.5	5		253	7,970	701201
027-0048	TR 91	1.3 MI N OF ILL 9	I-57	28.5	5		241.7	8,097	701201
027-0049	TR 105A	1.8 MI S OF ILL 9	I-57	26.5	5		222	6,993	701201
027-0071	ILL 115	2.0 MI S OF ILL 116	KELLY CREEK	32	4.4		146	5,314	701201
027-0072	ILL 115	5.07 MI N OF IL 116	N FORK VERMILLION RIVER	32	7.6		106.8	4229.28	701201
027-0073	ILL 115	2.3 MI N OF IL 116	KELLY CREEK	32	7.6		76.8	3041.28	701201
027-0076	ILL 54	2.7 MI S ILL 54/115	E BR VERMILION RIVER	32	7.4		91	3,585	701201
027-0078	ILL 9	0.9 MI E OF ELLIOT RD	DRAINAGE DITCH	32	7.4		48	1,891	701201
027-0079	US 24	1.2 MI W OF ILL 115	DRAINAGE DITCH	40	7.4		69	3,271	701201
027-0080	US 24	0.5 MI E ILL 115	N F VERMILION RIVER	40	7.4		93	4,408	701201
027-0081	US 24	1.1 MI E OF ILL 115	N F VERMILION RIVER	40	7.4		99.4	4,712	701201
027-0082	ILL 115	7.8 MI N OF ILL 9	TRIB OF SPRING CREEK	30	7.4		72.5	2,712	701201
027-0083	ILL 115	3.3 MI N OF ILL 9	E BR VERMILION RIVER	30	7.4		69.5	2,599	701201
027-0084	ILL 9 & 47	0.3 MI S OF ILL 9	DRUMMER CREEK	36	7.4		87.5	3,798	701501
027-0085	ILL 9 & 47	0.1 MI N OF ILL 54	DRUMMER CREEK	36	7.4		145	6,293	701501
027-0086	ILL 54	0.5 MI W GIBSON CITY	DRUMMER CREEK	32	7.4		106.2	4,184	701201
027-0087	ILL 54	1.0 MI SW GIBSON CITY	DRUMMER CREEK	32	7.4		73.6	2,900	701201
027-0088	ILL 54	2.5 MI SW GIBSON CITY	DRUMMER CREEK BR	32	7.4		64.2	2,529	701201
027-0089	ILL 47	3.5 MI S OF ILL 9	DRUMMER CREEK	35.4	7.4		133	5,692	701201
027-0090	ILL 9	PATTON ST IN PAXTON	IL CENTRAL RR	VAR	1.5		136.6	4,227	701201
027-0091	ILL 47	0.3 MI S OF ILL 165	MACKINAW RIVER	36	7.4		88.8	3,854	701201
027-0092	ILL 9	1.7 MI E OF ILL 47	DICKERSON SLOUGH	32	7.6		90	3,564	701201
027-0094	ILL 9	0.7 MI E OF ILL 115	WALL TOWN DR DITCH	32	7.6		122.8	4,863	701201
027-0095	ILL 115	3.4 MI S OF US 24	DITCH	32	7.6		72	2,851	701201
027-0096	ILL 9	0.1 MI W OF ILL 47	DRUMMER CREEK	32	7.6		134	5,306	701501
027-0097	ILL 115	2.4 MI OF ILL 116	DITCH	32	7.6		64	2,534	701201
027-0098	IL 116	3.3 MI E OF IL 115	DRAINAGE DITCH	32	7.6		108	4276.8	701201
027-0099	IL 115	4.52 MI S OF IL 116	DRAINAGE DITCH	32	7.6		70	2772	701201
027-0100	IL 116	2.67 MI E OF IL 115	DRAINAGE DITCH	32	7.6		94	3722.4	701201
027-0101	IL 9	1.04 MI W OF IL 47	DRUMMER CREEK	32	7.6		74.5	2950.2	701201
027-0102	IL 54	2.23 MI N OF IL 9	DITCH	32	7.6		93	3682.8	701201
027-0103	IL 54	7.62 MI N OF IL 9	BIG FOUR DITCH	32	7.6		91.58	3626.6	701201
027-0104	US 45	3.04 MI S OF IL 9	BIG FOUR DITCH	36	7.6		193	8414.8	701201
FORD COUNTY SUB-TOTAL								165,902	

\* STRUCTURE HAS EXISTING PCC OVERLAY.  
ADDITIONAL DRYING TIME MAY BE REQUIRED.

MODEL: Default  
FILE: h:\mfc\proj\pub\room\dat\illinois.gov\RWIDOT\Documents\DOT\_Offices\Dir\dtc\_3\projects\03668686\CADD\bas\03668686-rt-decal.dgn

USER NAME = nugentaj	DESIGNED -	REVISED -	<b>STATE OF ILLINOIS DEPARTMENT OF TRANSPORTATION</b>	<b>SCHEDULES FORD COUNTY</b>				F.A.-RTE.	SECTION	COUNTY	TOTAL SHEETS	SHEET NO.
PLOT SCALE = 100.0000' / in.	DRAWN -	REVISED -		SCALE:	SHEET 1	OF 3 SHEETS	STA.	TO STA.	ILLINOIS	FED. AID PROJECT	VARIOUS	10 4
PLOT DATE = 8/7/2019	CHECKED -	REVISED -									CONTRACT NO. 66J86	
	DATE -	REVISED -										

CONCRETE SEALER - IROQUOIS COUNTY

STRUCTURE NUMBER	FACILITY CARRIED	APPROXIMATE LOCATION	FEATURE CROSSED	DECK WIDTH FEET	PARAPET SURFACE FEET	MEDIAN SURFACE FEET	DECK LENGTH FEET	SEAL AREA SQ FT	TRAFFIC CONTROL AND PROTECTION STANDARD
IROQUOIS COUNTY INTERSTATE									
038-0001	I-57 SOUTHBOUND	1.0 MILES SOUTH OF GILMAN INTERCHANGE	SPRING CREEK	40	1		90.8	3,723	701406
038-0002	I-57 NORTHBOUND	GILMAN INTERCHANGE	CREEK	40	1		90.8	3,723	701406
038-0003	I-57 SOUTHBOUND	9.0 MILES SOUTH OF ASHKUM INTERCHANGE	IC RAILROAD	40	4		226.6	9,970	701406
038-0004	I-57 NORTHBOUND	ASHKUM INTERCHANGE	RAILROAD	40	4		226.6	9,970	701406
038-0005	I-57 NORTHBOUND	8.8 MILES SOUTH OF ASHKUM INTERCHANGE	AT & SF RAILROAD	40	4		174	7,656	701406
038-0006	I-57 SOUTHBOUND	ASHKUM INTERCHANGE	RAILROAD	40	4		174	7,656	701406
038-0007	I-57 NORTHBOUND	8.6 MILES SOUTH OF ASHKUM INTERCHANGE	WEST SECOND STREET	40	4		106.7	4,695	701406
038-0008	I-57 SOUTHBOUND	ASHKUM INTERCHANGE	STREET	40	4		106.7	4,695	701406
038-0013	I-57 NORTHBOUND	0.78 MILES SOUTH OF CLIFTON INTERCHANGE	US 45 & ICG RAILROAD	40	7.6		373.8	17,793	701406
038-0014	I-57 SOUTHBOUND	CLIFTON INTERCHANGE	ICG RAILROAD	40	7.6		373.8	17,793	701406
038-0151	I-57 SOUTHBOUND	7.3 MILES SOUTH OF ONARGA INTERCHANGE	SPRING CREEK	40	1		93.5	3,834	701406
038-0152	I-57 NORTHBOUND	ONARGA INTERCHANGE	CREEK	40	1		93.5	3,834	701406
038-0215	I-57 SOUTHBOUND	2.23 MILES SOUTH OF CHEBANSE INTERCHANGE	LANGAN CREEK	40	7.6		216	10,282	701406
038-0216	I-57 NORTHBOUND	CHEBANSE INTERCHANGE	CREEK	40	7.6		216	10,282	701406
038-0222	I-57 SOUTHBOUND	2.5 MILES SOUTH OF BUCKLEY INTERCHANGE	SPRING CREEK	40	7.6		116	5,522	701406
038-0223	I-57 NORTHBOUND	BUCKLEY INTERCHANGE	CREEK	40	7.6		116	5,522	701406
NON-INTERSTATE									
038-0019	ILL 1	2.2 MI N OF US 52	N MARTINTON DT NO 2	31.5	7.4		106	4,123	701201
038-0025	ILL 1	S EDGE OF MILFORD	SUGAR CREEK	36	7.4		207.1	8,988	701201
038-0031	US 24	GILMAN INTERCHANGE	I-57	49	7.4	18.5	222	16,628	701201
038-0032	US 24	2.1 MI E OF US 45	DRAINAGE DITCH	40	7.4		107.1	5,077	701201
038-0033	US 24	3.1 MI E OF US 45	DRAINAGE DITCH	40	7.4		186.2	8,826	701201
038-0034	US 24	4.1 MI E OF US 45	SPRING CREEK	40	7.4		207.8	9,850	701201
038-0037	US 24	2.7 MI E OF ILL 1	RAYMOND CREEK	40	7.4		100	4,740	701201
038-0077	FAS 335/CH 10	6.5 MI S BUCKLEY INT	I-57	30.5	5		184	6,532	701201
038-0082	FAS 337/CH 47	2.6 MI S ONARGA INT	I-57	26.5	5		225.3	7,097	701201
038-0086	TR 155	7.8 MI S ASHKUM INT	I-57	26	1.6		238.3	6,577	701201
038-0103	US 52	1.7 MI E OF ILL 49	IROQUOIS RIVER	32	7.4		409.9	16,150	701201
038-0118	ILL 49	2.5 MI N OF US 24	SPRING CREEK	32	7.4		284.5	11,209	701201
038-0123	ILL 116	ASHKUM INTERCHANGE	I 57	32.5	4.8		264.8	9,877	701201
038-0125	TR 89	2.5 MI S ASHKUM INT	I 57	26.5	5		220.5	6,946	701201
038-0126	TR 26A	7.1 MI S ONARGA INT	I-57	26.5	5		329.4	10,376	701201
038-0128	TR 49A	1.6 MI S CLIFTON INT	I 57	24	1.6		256.2	6,559	701201
038-0129	TR 58A	1.2 MI S GILMAN INT	I 57	24	5		343.6	9,964	701201
038-0130	TR 95	3.5 MI S OF ILL 116	I 57	26.5	5		263.3	8,294	701201
038-0131	TR 109	5.6 MI S ASHKUM INT	I 57	26.5	5		222.8	7,018	701201
038-0132	TR 269	4.7 MI S ONARGA INT	I-57	26.5	5		181.8	5,727	701201
038-0133	TR 327	1.1 MI S BUCKLEY INT	I-57	26.5	5		180.6	5,689	701201
038-0134	TR 349	4.1 MI S BUCKLEY INT	I-57	26.5	5		242.8	7,648	701201
038-0142	US 52	5.5 MI E OF ILL 49	DRAINAGE DITCH	32	1.6		15.8	531	701201
038-0164	ILL 1	1.2 MI N OF MILFORD	UNKNOWN STREAM	37	1.2		22.5	860	701201
038-0174	ILL 49	4.4 MI N ILL 9	PIGEON CREEK	33			93.5	3,086	701201
038-0179	US 24	W EDGE OF WATSEKA	SUGAR CREEK	30	7.4		378.8	14,167	701501
038-0184	OLD US 45	1.2 MI S OF CHEBANSE	TRIB OF LANGAN CREEK	32			47.25	1,512	701201
038-0186	US 24	4.5 MI W OF I-57	PRAIRIE CREEK	40	7.4		101.3	4,802	701201
038-0187	US 24	3.7 MI W OF I-57	TRIB PRAIRIE CREEK	40	7.4		65	3,081	701201
038-0191	ILL 49	3.4 MI S OF US 24	TRIB OF SHAVEYAIL CR	40	7.4		42	1,991	701201
038-0197	ILL 1	2.7 MI S OF US 24	SUGAR CREEK	36	7.4		60	2,604	701201
038-0198	ILL 49	12.6 MI S US 24	LITTLE MUD CREEK	32	7.4		140	5,516	701201
038-0200	ILL 1	31.8 MI N OF CH 10	SUGAR CREEK TRIB	36	7.4		170.25	7,389	701201
038-0201	ILL 1	0.7 MI N OF CH 10	SUGAR CREEK TRIB	36	7.4		108.8	4,722	701201
038-0206	ILL 1	0.8 MI N PAPINEAU RD	BIG BEAVER CREEK	31.5	7.4		129.6	5,041	701201
038-0207	ILL 54	7.6 MI N OF ILL 115	SPRING CREEK	31.5	7.4		131.9	5,131	701201
038-0210	US 45	0.3 MI S DEL REY RD	SPRING CREEK	32	7.4		99.7	3,928	701201
038-0211	US 45	0.4 MI S OF US 24	DRAINAGE DITCH	36	7.4		89	3,863	701201
038-0212	US 45	1.7 MI N OF BUCKLEY	LOUIS CREEK	32	7.6		102	4,039	701201
038-0213	ILL 54	1.1 MI N OF THAWVILLE	SPRING CREEK	32	7.6		91	3,604	701201
038-0214	US 45/FAS 338	10.6 MI S OF ILL 54	SPRING CREEK	32	7.6		95	3,762	701201
038-0217	ILL 49	16.1 MI S OF US 24	PIDGEON CREEK	32	7.6		138	5,465	701201
038-0219	ILL 1	1.0 MI N OF US 24	IROQUOIS RIVER	40	7.6		346	16,470	701201
038-0220	ILL 116	3.81 MI W OF I-57	BR OF LANGAN CRK	32	7.6		76	3,010	701201
038-0221	US 45	2.3 MI E OF ASHKUM	PRAIRIE CREEK	32	7.6		92	3,643	701201
IROQUOIS COUNTY SUB-TOTAL								419,056	

\* STRUCTURE HAS EXISTING PCC OVERLAY.  
ADDITIONAL DRYING TIME MAY BE REQUIRED.

MODEL: Default  
FILE: A:\02-2023\proj\p10230001\0230001.dwg

USER NAME = nugentaj	DESIGNED -	REVISED -
PLOT SCALE = 100.0000 ' / in.	DRAWN -	REVISED -
PLOT DATE = 8/7/2019	CHECKED -	REVISED -
	DATE -	REVISED -

**STATE OF ILLINOIS  
DEPARTMENT OF TRANSPORTATION**

**SCHEDULES  
IROQUOIS COUNTY**

F.A.-RTE.	SECTION	COUNTY	TOTAL SHEETS	SHEET NO.
VAR	*	VARIOUS	10	5
			CONTRACT NO. 66J86	

SCALE: SHEET 2 OF 3 SHEETS STA. TO STA.

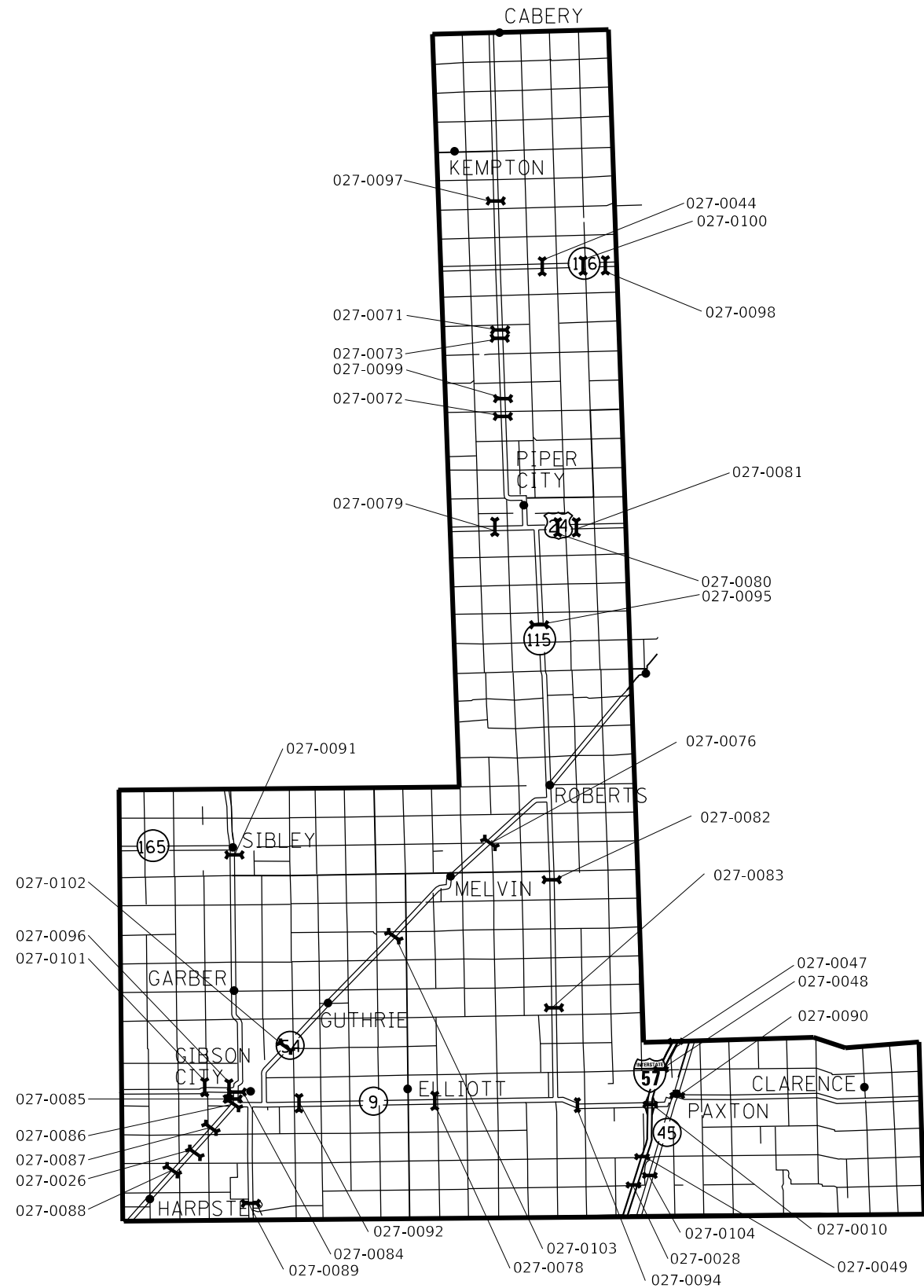
\*D3 BRIDGE DECK SEALING FY 2020

CONCRETE SEALER - KANKAKEE COUNTY									
STRUCTURE NUMBER	FACILITY CARRIED	APPROXIMATE LOCATION	FEATURE CROSSED	DECK WIDTH FEET	PARAPET SURFACE FEET	MEDIAN SURFACE FEET	DECK LENGTH FEET	SEAL AREA SQ FT	TRAFFIC CONTROL AND PROTECTION STANDARD
KANKAKEE COUNTY INTERSTATE									
046-0013	I-57 NORTHBOUND	1.8 MI N OF ILL 17	SOLDIER CREEK	40	7.4		76.6	3,631	701406
046-0114	I-57 SOUTHBOUND	4.3 MI N CHEBANSE INT	MINNIE CREEK	40	7.4		69.2	3,280	701406
046-0135	I-57 NORTHBOUND	2.9 MI NW OF US 45/52	KANKAKEE RIVER	40	7.6		886.33	42,189	701406
046-0136	I-57 SOUTHBOUND	2.9 MI NW OF US 45/52	KANKAKEE RIVER	40	7.6		886.33	42,189	701406
046-0144	I-57 SOUTHBOUND	I-57 & IL 50 INTERCHANGE	IL 50	61	8.8		230.7	16,103	701406/701411
046-0145	I-57 NORTHBOUND			61.7	8.8		230	16,215	701406/701411
046-0146	I-57 SOUTHBOUND	0.3 MILES NW	ICG	82	8.8		170	15,436	701406/701411
046-0147	I-57 NORTHBOUND	OF IL 50	RAILROAD	72.5	8.8		169.7	13,797	701406/701411
NON- INTERSTATE									
046-0021	ILL 1	0.2 MIE W OF GRANT PARK	TRIM CREEK	36	7.4		96	4,166	701201
046-0027	ILL 17	0.9 MI E OF REDDICK	REDDICK RUN CREEK	32	7.4		595.4	40,478	701201
046-0045	ILL 50	1 MI N JT US 45 & 52	KANKAKEE RIVER	61.2	6.2		595.4	39,763	701201
046-0070	US 52 & 45	1.2 MI S OF I-57	MINNIE CREEK	40			103.8	4,152	701201
046-0084	LAKE MANTENO RD	1.1 MI N MANTENO RD	I-57	24	1.8		243.5	6,282	701201
046-0085	7000N RD/MS 1025	4.2 MI N ILL 50	I-57	24	1.8		241.1	6,220	701201
046-0111	ILL 1 & 17	MOMENCE	KANKAKEE RIVER	52	1		241	12,773	701501
046-0112	ILL 115,US 45 & 52	0.6 MI S OF ILL 17	KANKAKEE RIVER	46	7.4		561	29,957	701606
046-0113	FAU 6189/RIVER RD	2.3 MI N OF US 45 & 52	I-57	28	7.4		218	7,717	701201
046-0115	ILL 1	4.4 MI S OF ILL 17	DITCH	36	7.4		34	1,476	701201
046-0116	ILL 1	4.0 MI S OF ILL 17	DITCH	36	7.4		39	1,693	701201
046-0117	ILL 1	2.6 MI S OF ILL 17	SPRING CREEK	36	7.4		80	3,472	701201
046-0118	ILL 1	0.8 MI S OF ILL 17	DITCH	36	7.4		43	1,866	701201
046-0119	US 45 & 52	1.0 MI N OF I-57	GARR CREEK	63	7.4		88	6,195	701606
046-0121	US 45 & 52	50 FT N COURT ST IN KKK	SOLDIERS CREEK	91.5	1.6	0.5	107.3	10,194	701601
046-0122	ILL 50	S EDGE OF MANTENO	S BR ROCK CREEK	51.2	1.6		131.2	6,927	701606
046-0124	ILL 17	0.1 MI EAST OF US 45	ICG RAILROAD	79	13.32	1	38.5	3,593	701601
046-0125	ILL 50	N LIMITS KANKAKEE	SOLDIER CREEK	65.6	1.6		90	6,048	701602
046-0127	ILL 17/FAS 310	2.1 MI SE OF JCT ILL 1 & 17	PIKE CREEK	36	7.4		94	4,080	701201
046-0129	ILL 17	5.0 MI SE OF JCT ILL 1 & 17	BULL CREEK	36	7.4		86.5	3,754	701201
046-0130	ILL 17	1.5 MI E OF REDDICK	MAZON RIVER	32	7.4		90.2	3,554	701201
046-0131	ILL 114	1.7 MI E OF ILL 1 & 17	PIKE CREEK	40	7.4		64	3,034	701201
046-0132	ILL 17	2.0 MI E OF REDDICK	CRANE CREEK	36	7.4		130	5,642	701201
046-0133	ILL 115	15.1 MI W OF US 45	HORSE CREEK	35.4	7.4		98.4	4,212	701501
046-0134	ILL 102	2.2 MI NW OF US 45	DAVIS CREEK	40	1		41.3	1,693	701201
046-0137	ILL 113	4.7 MI N OF ILL 17	WILEY CREEK	32	7.6		91.5	3,623	701201
046-0139	NORTH ST/FAU 6177	2.0 MI N OF ILL 17	I-57	50	7.6		212.67	12,250	701201
046-0148	6000 N ROAD	3.2 MI N OF IL 50	I-57	78	4.3	7	220.5	19,691	701201
046-0149	ILL 102	6.5 MI NW OF US 45/52	ROCK CREEK	40	7.6		250	11,900	701201
046-0152	ILL 115	2.0 MI SW OF KANKAKEE	GAR CREEK	36	7.6		82	3,575	701201
KANKAKEE COUNTY SUB-TOTAL								422,821	
TOTAL								1,007,779	

\* STRUCTURE HAS EXISTING PCC OVERLAY.  
ADDITIONAL DRYING TIME MAY BE REQUIRED.

MODEL: Default  
FILE: \\nrcs-pub\pubroom\dat\illinois\pwr\WIDOT\Documents\DOT\_Offices\Illin\ct 3\Projects\03668686\CD\03668686-rt-dca\kldm

USER NAME = nugentaj	DESIGNED -	REVISED -	<b>STATE OF ILLINOIS DEPARTMENT OF TRANSPORTATION</b>	<b>SCHEDULES KANKAKEE COUNTY</b>				F.A.-RTE.	SECTION	COUNTY	TOTAL SHEETS	SHEET NO.		
PLOT SCALE = 100,0000' / in.	DRAWN -	REVISED -		SCALE:	SHEET 3	OF 3	SHEETS	STA.	TO STA.	ILLINOIS	FED. AID PROJECT	VARIOUS	10	6
PLOT DATE = 8/7/2019	CHECKED -	REVISED -		CONTRACT NO. 66J86										
	DATE -	REVISED -		*D3 BRIDGE DECK SEALING FY 2020										



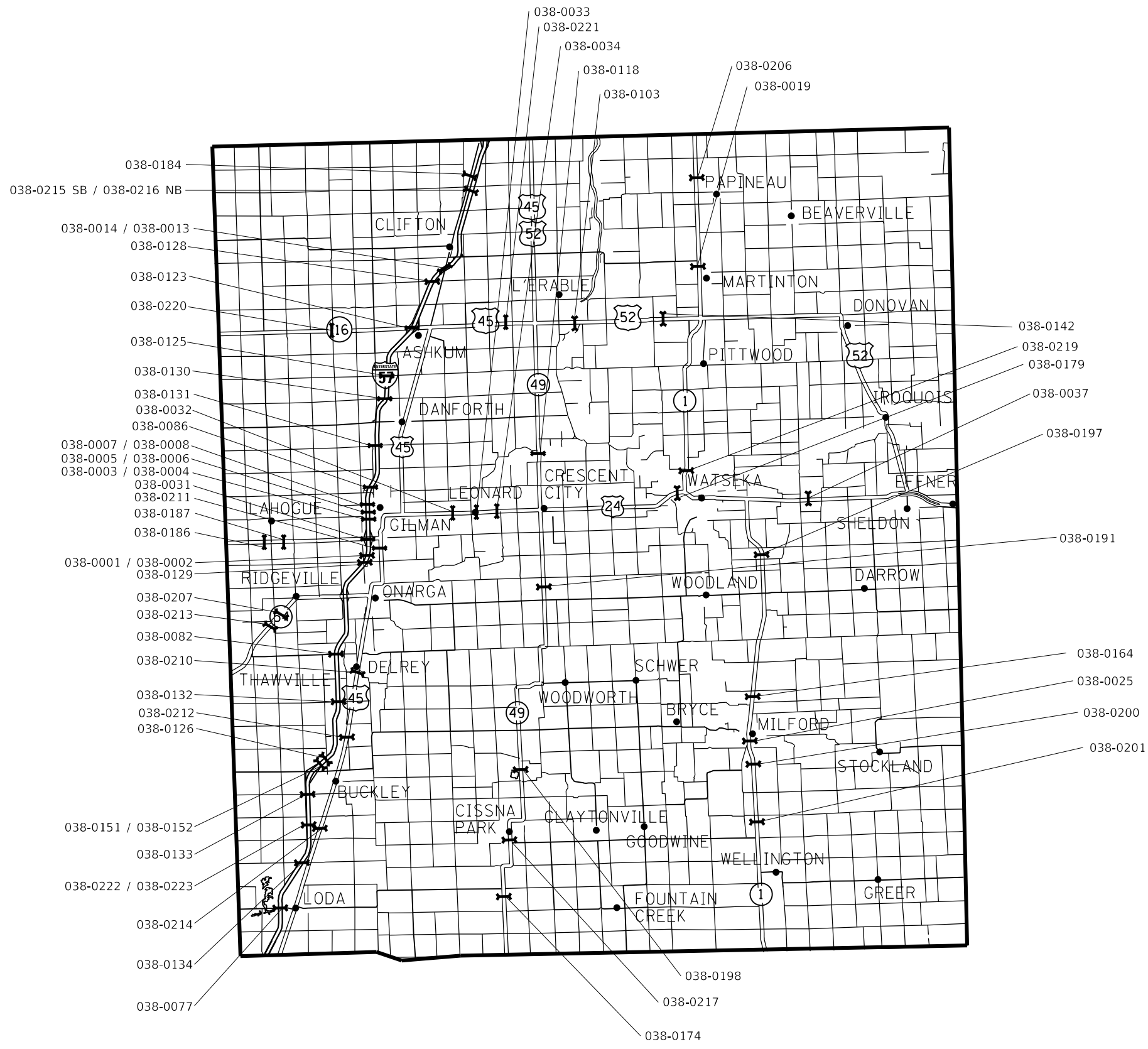
# FORD COUNTY

MODEL: Default  
FILE: A:\Irrigation\pww\DOT\Documents\DOT - Offices\District 3\Projects\03\66\86\66-rt-deck.dgn

	USER NAME = nugentaj	DESIGNED -	REVISED -	STATE OF ILLINOIS DEPARTMENT OF TRANSPORTATION	LOCATION MAP FORD COUNTY	F.A.-RTE.	SECTION	COUNTY	TOTAL SHEETS	SHEET NO.
	PLOT SCALE = 100,0000' / in.	CHECKED -	REVISED -			VAR	*	VARIOUS	10	7
PLOT DATE = 8/7/2019	DATE -	REVISED -	REVISED -			CONTRACT NO. 66J86		ILLINOIS FED. AID PROJECT		

SCALE: SHEET 1 OF 3 SHEETS STA. TO STA.

\*D3 BRIDGE DECK SEALING FY 2020



# IROQUOIS COUNTY

**STATE OF ILLINOIS  
DEPARTMENT OF TRANSPORTATION**

**LOCATION MAP  
IROQUOIS COUNTY**

USER NAME = nugentaj	DESIGNED -	REVISED -
	DRAWN -	REVISED -
PLOT SCALE = 100,0000' / in.	CHECKED -	REVISED -
PLOT DATE = 8/7/2019	DATE -	REVISED -

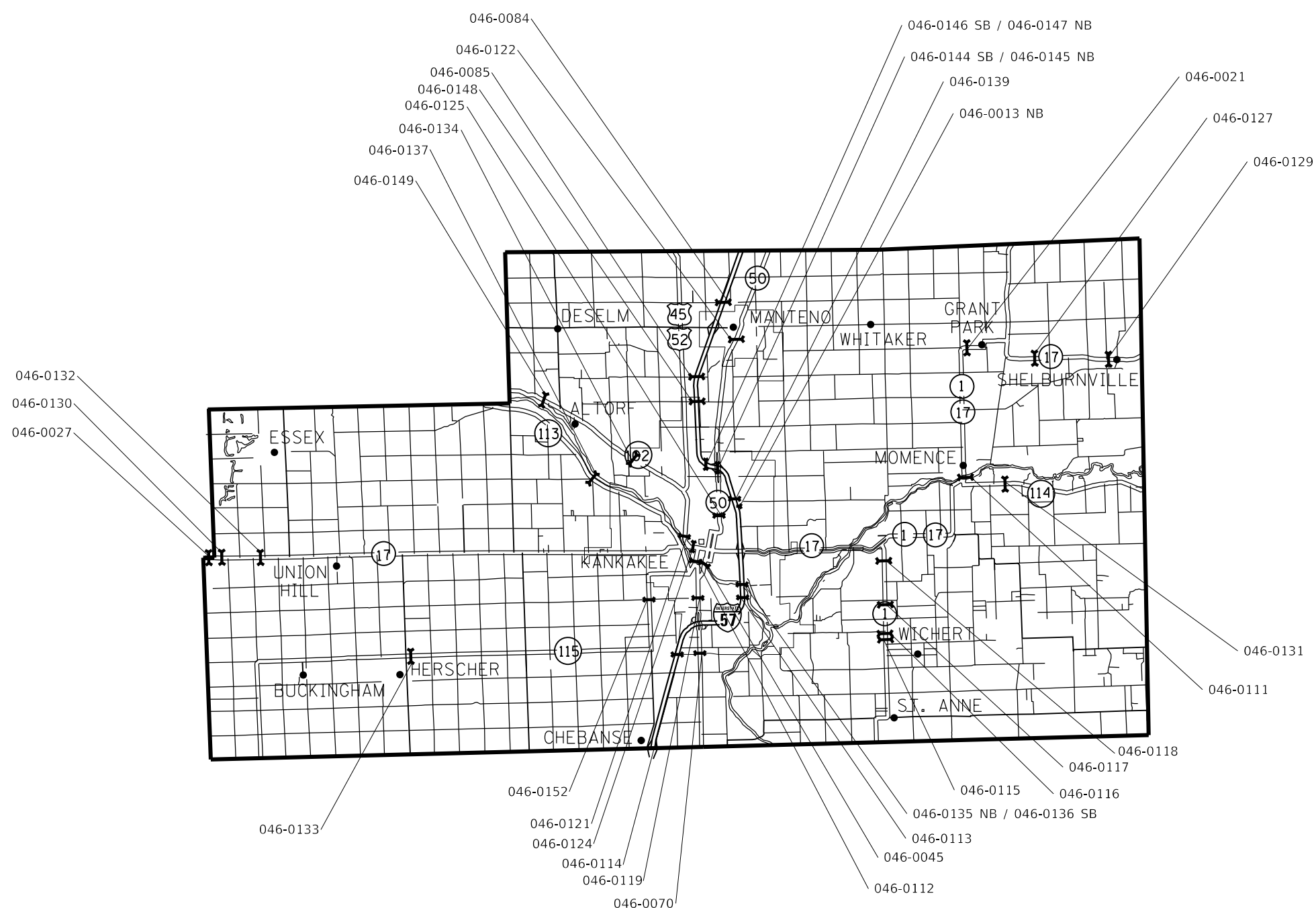
SCALE:	SHEET 2	OF 3	SHEETS	STA.	TO STA.
--------	---------	------	--------	------	---------

F.A.-RTE.	SECTION	COUNTY	TOTAL SHEETS	SHEET NO.
	*	VARIOUS	10	8
			CONTRACT NO. 66J86	
		ILLINOIS FED. AID PROJECT		

MODEL: Default  
 FILE: \\nugentaj\pub\pubroom\dat\illinois.gov\PIWDOT\Documents\DOT\_Offices\District\_3\Projects\03868686\03868686-rt-decal.dgn

\*D3 BRIDGE DECK SEALING FY 2020





# KANKAKEE COUNTY

MODEL: Default  
 FILE: kankakee.pxd  
 PROJECT: 366J86  
 OFFICE: DISTRICT 3  
 DATE: 8/7/2019

USER NAME = nugentaj	DESIGNED -	REVISED -
	DRAWN -	REVISED -
PLOT SCALE = 100,0000' / in.	CHECKED -	REVISED -
PLOT DATE = 8/7/2019	DATE -	REVISED -

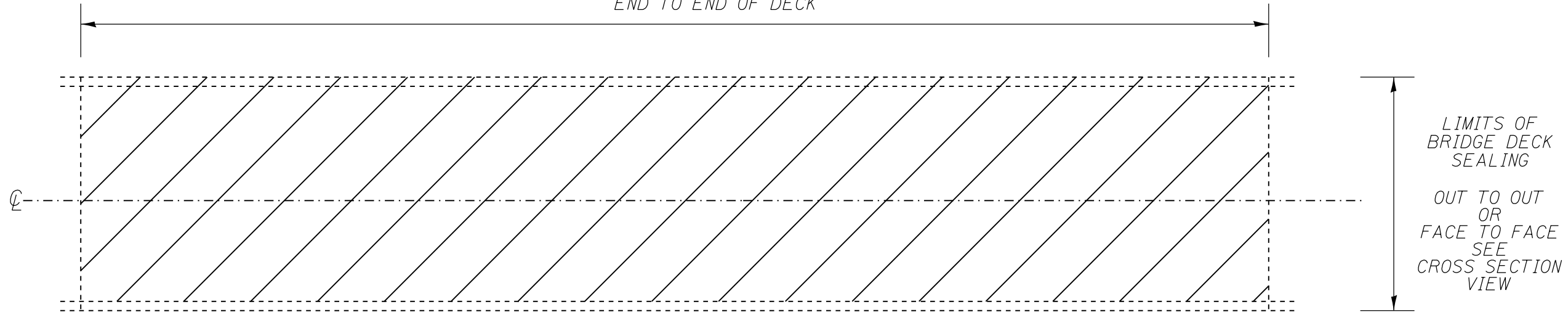
**STATE OF ILLINOIS**  
**DEPARTMENT OF TRANSPORTATION**

<b>LOCATION MAP</b>			
<b>KANKAKEE COUNTY</b>			
SCALE:	SHEET 3	OF 3 SHEETS	STA. TO STA.

F.A.-RTE.	SECTION	COUNTY	TOTAL SHEETS	SHEET NO.
	*	VARIOUS	10	9
CONTRACT NO. 66J86				
ILLINOIS FED. AID PROJECT				

\*D3 BRIDGE DECK SEALING FY 2020

LIMITS OF BRIDGE DECK SEALING  
END TO END OF DECK

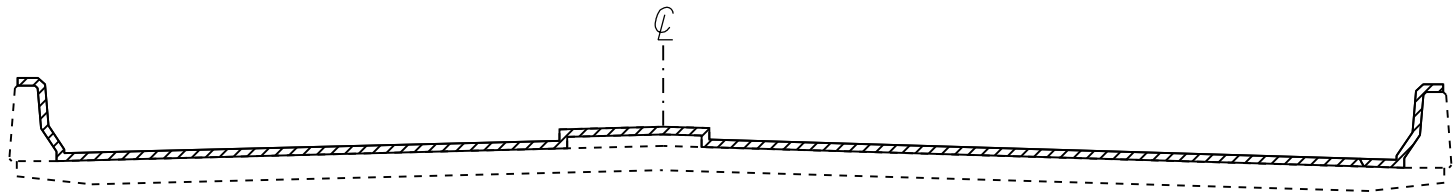


PLAN VIEW

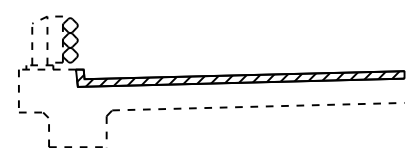
NOTE: BRIDGE APPROACH PAVEMENT SHALL NOT BE SEALED.

EXISTING PAVEMENT MARKINGS SHALL BE TEMPORARILY COVERED PRIOR TO APPLICATION OF THE DECK SURFACE TREATMENT, TO PREVENT THE MATERIAL FROM BEING APPLIED TO THE MARKINGS, AND TO PROTECT THE REFLECTIVE PROPERTIES OF THE MARKINGS. THE TEMPORARY COVERING MATERIAL USED SHALL BE SUCH THAT IT WILL NOT AFFECT THE MARKING'S REFLECTIVITY WHEN REMOVED AFTER APPLICATION OF THE DECK SURFACE TREATMENT AND PRIOR TO OPENING TO TRAFFIC. COST INCLUDED WITH CONCRETE SEALER.

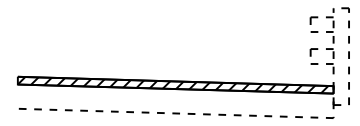
EXISTING EXPANSION JOINTS SHALL BE TEMPORARILY COVERED, PRIOR TO APPLICATION OF THE DECK SURFACE TREATMENT, TO PREVENT THE MATERIAL FROM BEING APPLIED TO THE JOINTS. THE TEMPORARY COVERING SHALL BE REMOVED AFTER THE APPLICATION OF THE DECK SURFACE TREATMENT AND PRIOR TO OPENING TO TRAFFIC. COST IS INCLUDED WITH CONCRETE SEALER.



SECTION WITH  
PARAPET AND MEDIAN



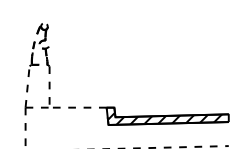
SECTION WITH CURB AND  
TUBULAR THRIE BEAM RETROFIT RAIL



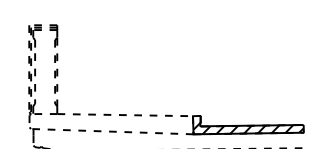
SECTION WITH  
BRIDGE RAIL



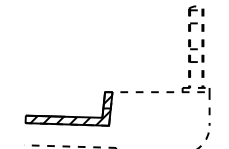
SECTION WITH CONCRETE  
AND ALUMINUM RAILING



CONCRETE AND  
ALUMINUM RAILING



CONCRETE  
BRIDGE RAILING



BRIDGE RAIL

VARIOUS SECTIONS WITH SIDEWALK AND/OR CONCRETE CURB

 AREA TO BE SEALED

NOT TO SCALE

MODEL: Default  
FILE: \\nrcs\pub\baroncom.dta\illinois.gov\PI\DOT\Documents\DOT\_Offices\District\_3\Projects\036686\036686\CADD\036686-rt-draw\k.dgn

USER NAME = nugentaj	DESIGNED -	REVISED -
PLOT SCALE = 100.0000' / in.	DRAWN -	REVISED -
PLOT DATE = 8/7/2019	CHECKED -	REVISED -
	DATE -	REVISED -

STATE OF ILLINOIS  
DEPARTMENT OF TRANSPORTATION

DETAILS

SCALE: SHEET 1 OF 1 SHEETS STA. TO STA.

F.A.-RTE.	SECTION	COUNTY	TOTAL SHEETS	SHEET NO.
	*	VARIOUS	10	10
CONTRACT NO. 66J86				
ILLINOIS FED. AID PROJECT				