

STATE OF ILLINOIS  
DEPARTMENT OF TRANSPORTATION

F.A.S. RTE.	SECTION	COUNTY	TOTAL SHEETS	SHEET NO.
1774	(109,110) Q-1, PP	LOGAN	6	1
ILLINOIS			CONTRACT NO. 72L39	

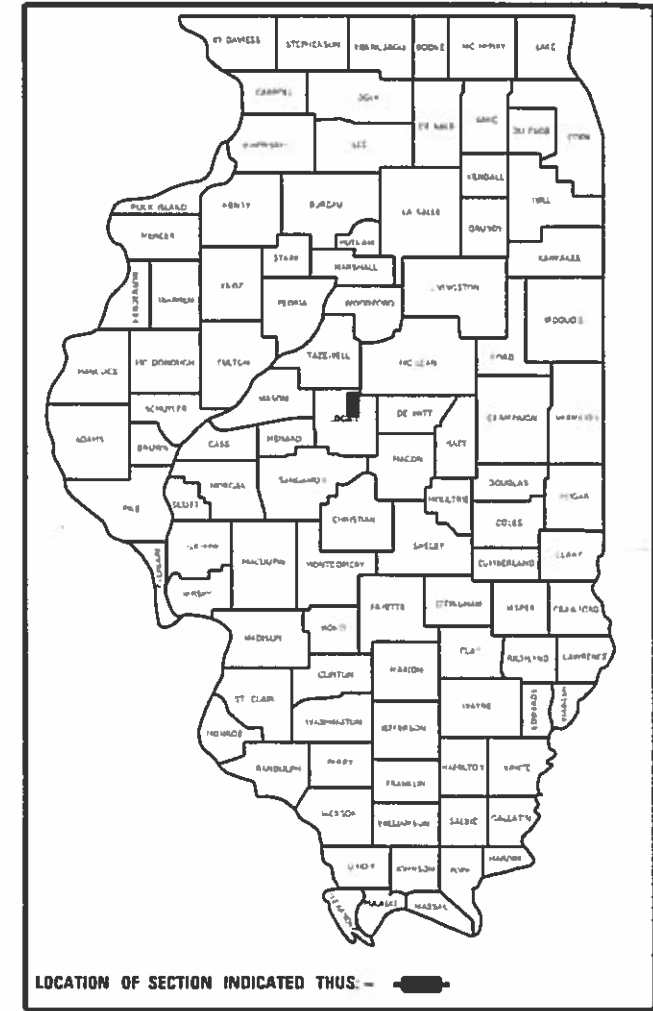
038

FOR INDEX OF SHEETS, SEE SHEET NO. 2

# PROPOSED CONTRACT MAINTENANCE

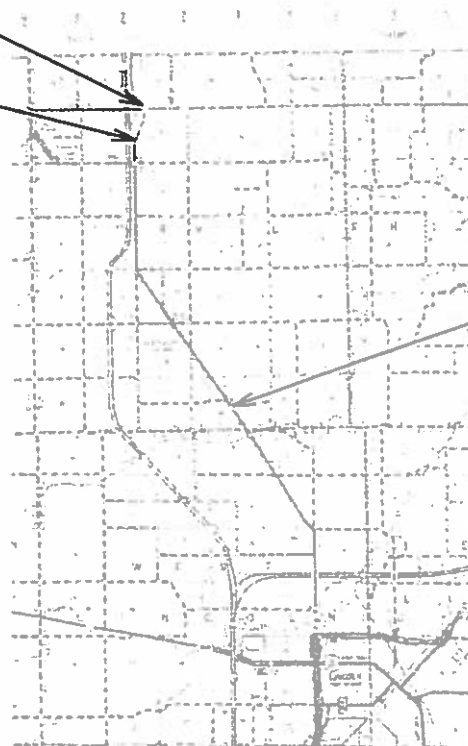
FAS 1774 (OLD IL 121)  
SECTION (109,110) Q-1, PP  
PROJECT BIT. SURFACE TREATMENT - A2  
LOGAN COUNTY

D-96-001-20



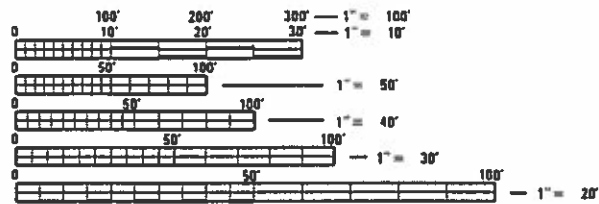
C-96-013-20

BEGIN PROJECT  
STA. 49+20  
STA. EQ. 24+00bK  
= 1179+70 ah



END PROJECT  
STA. 1479+14

ADT = 600  
SU = 20  
MU = 20



FULL SIZE PLANS HAVE BEEN PREPARED USING STANDARD ENGINEERING SCALES. REDUCED SIZED PLANS WILL NOT CONFORM TO STANDARD SCALES. IN MAKING MEASUREMENTS ON REDUCED PLANS, THE ABOVE SCALES MAY BE USED.

J.U.L.I.E.  
JOINT UTILITY LOCATION INFORMATION FOR EXCAVATORS  
1-800-892-0123  
OR 811

PROJECT ENGINEER MIKE IRWIN  
PROJECT MANAGER TIM SHARP

CONTRACT NO. 72L39

GROSS LENGTH = 32,464.00 FT. = 6.148 MILE  
NET LENGTH = 32,464.00 FT. = 6.148 MILE

STATE OF ILLINOIS  
DEPARTMENT OF TRANSPORTATION

SUBMITTED Aug 21 2019  
JULY P. M.  
REGIONAL ENGINEER

Oct 4 2019  
E.A. ETC  
ENGINEER OF DESIGN AND ENVIRONMENT

Oct 4 2019  
David E. Chaf  
DIRECTOR OF HIGHWAYS PROJECT IMPLEMENTATION 3

PRINTED BY THE AUTHORITY  
OF THE STATE OF ILLINOIS

## INDEX OF SHEETS




SHEET NO.	DESCRIPTION
1.	COVER SHEET
2.	INDEX OF SHEETS, STANDARDS, GENERAL NOTES & SIGNATURES
3.	SUMMARY OF QUANTITIES
4.	SCHEDULES
5.	LOCATION MAP
6.	TYPICAL SECTIONS

## STANDARDS

STANDARD NO.	DESCRIPTION
442201-03	CLASS C AND D PATCHES
701006-05	OFF-RD OPERATIONS, 2L, 2W, 15' (4.5m) TO 24" (600mm) FROM EDGE OF PAVEMENT
701011-04	OFF-RD MOVING OPERATIONS, 2L, 2W, DAY ONLY
701201-05	LANE CLOSURE, 2L, 2W, DAY ONLY, FOR SPEEDS $\geq$ 45 MPH
701306-04	LANE CLOSURE, 2L, 2W, DAY ONLY, SLOW MOVING OPERATIONS DAY ONLY FOR SPEEDS $\geq$ 45 MPH
701901-08	TRAFFIC CONTROL DEVICES

## NOTES

- COVER AND SEAL COAT SHALL BE CRUSHED LIMESTONE.
- D-6 OPERATIONS WILL PLACE PERMANENT PAVEMENT MARKINGS.

<b>STATE OF ILLINOIS DEPARTMENT OF TRANSPORTATION DIVISION OF HIGHWAYS DISTRICT 6</b>	
EXAMINED _____ 20 _____	
	
ENGINEER OF OPERATIONS	
EXAMINED _____ 20 _____	
	
ENGINEER OF PROJECT IMPLEMENTATION	
EXAMINED <u>August 15</u> 20 <u>19</u>	
	
ENGINEER OF PROGRAM DEVELOPMENT	

MODEL: D:\dtp\...  
 FILE NAME: S:\...  
 USER: sharptd  
 PLOT DATE: 8/21/2019

USER NAME = sharptd	DESIGNED - _____	REVISED - _____
PLOT SCALE = 40 0000 / in.	DRAWN - _____	REVISED - _____
PLOT DATE = 8/21/2019	CHECKED - _____	REVISED - _____
	DATE - _____	REVISED - _____

**STATE OF ILLINOIS  
DEPARTMENT OF TRANSPORTATION**

<b>INDEX OF SHEETS, HIGHWAY STANDARDS, GENERAL NOTES, &amp; SIGNATURES</b>	
SCALE: _____	SHEET _____ OF _____ SHEETS STA. _____ TO STA. _____

F.A.S. RTE.	SECTION	COUNTY	TOTAL SHEETS	SHEET NO.
1774	(109.110) Q-1. PP	LOGAN	6	2
ILLINOIS FED. AID PROJECT			CONTRACT NO. 72L39	

0-02174-6013  
 100% STATE  
 LOGAN  
 ROADWAY  
 0005  
 RURAL

CODE NO.	ITEM	UNIT	TOTAL QUANTITY	
40300400	BITUMINOUS MATERIALS (COVER AND SEAL COATS)	TON	298	298
40300500	COVER COAT AGGREGATE	TON	1217	1217
40300600	SEAL COAT AGGREGATE	TON	974	974
40600400	MIXTURE FOR CRACKS, JOINTS, AND FLANGEWAYS	TON	10	10
44000690	HOT-MIX ASPHALT SURFACE CORRECTION	SQ YD	97392	97392
44201789	CLASS D PATCHES, TYPE II, 12"	SQ YD	100	100
44201794	CLASS D PATCHES, TYPE III, 12"	SQ YD	100	100
67100100	MOBILIZATION	L SUM	1	1
70100450	TRAFFIC CONTROL AND PROTECTION, STANDARD 701201	L SUM	1	1
70100460	TRAFFIC CONTROL AND PROTECTION, STANDARD 701306	L SUM	1	1
78300200	RAISED REFLECTIVE PAVEMENT MARKER REMOVAL	EACH	408	408

FILE NAME =  
 S:\CONTRMINT\_CAD\72L39 - F&S 1774 10L0

USER NAME = sharptd  
 IL 1211 - Logan Co - A2\PLANS\72L39-shr-3-500

DESIGNED -  
 DRAWN - DWS  
 CHECKED -  
 DATE -

REVISED -  
 REVISED -  
 REVISED -  
 REVISED -

STATE OF ILLINOIS  
 DEPARTMENT OF TRANSPORTATION

SUMMARY OF QUANTITIES

SCALE: SHEET OF SHEETS STA. TO STA.

F.A.S. RTE.	SECTION	COUNTY	TOTAL SHEETS	SHEET NO.
1774	(109.110) 0-1, PP	LOGAN	6	3
CONTRACT NO. 72L39			ILLINOIS FED. AID PROJECT	

40300400 BITUMINOUS MATERIALS (COVER AND SEAL COATS)					
STA.	TO	STA.	LENGTH	WIDTH	AREA
			FT	FT	SQ YD
49+20 TO 24+00			2520	27	7560.00
STA. EQ. 24+00bk = 1179+70ah					
1179+70 TO 1479+14			29944	27	89832.00
TOTAL			32464		97392.00
COVER COAT (0.32 GAL/SQ YD * 8.5PPG) (1TON=2000POUND)					
RATE	PPG	POUND	AREA	TON	
0.32	8.5	2000	97392.00	132.45	
SEAL COAT (0.40 GAL/SQ YD * 8.5PPG) (1TON=2000POUND)					
RATE	PPG	POUND	AREA	TON	
0.4	8.5	2000	97392.00	165.57	
TOTAL COVER COAT + SEAL COAT (TON)				298	

MIXTURE REQUIREMENTS	
THE FOLLOWING MIXTURE REQUIREMENTS ARE APPLICABLE FOR THIS PROJECT	
MIXTURE USE(S):	CLASS D PATCHES
AC/PG:	PG 64-22
DESIGN AIR VOIDS:	4.0% @ N50
MIXTURE COMPOSITION:	IL 19.0
FRICTION AGGREGATE:	N/A
QUALITY MANAGEMENT:	QC/QA
SUBLOT SIZE:	N/A

40300600 SEAL COAT AGGREGATE		
AREA	RATE	TON
SQ YD	TON/SQ YD	
97392.00	0.01	974

40300500 COVER COAT AGGREGATE		
AREA	RATE	TON
SQ YD	TON/SQ YD	
97392.00	0.0125	1217

78300200 RAISED REFLECTIVE PAVEMENT MARKER REMOVAL			
	LENGTH	SPACING	EACH
		(FEET)	(FEET)
49+20 TO 24+00		2520	80
STA. EQ. 24+00bk = 1179+70ah			
1179+70 TO 1479+14		29944	80
TOTAL			408

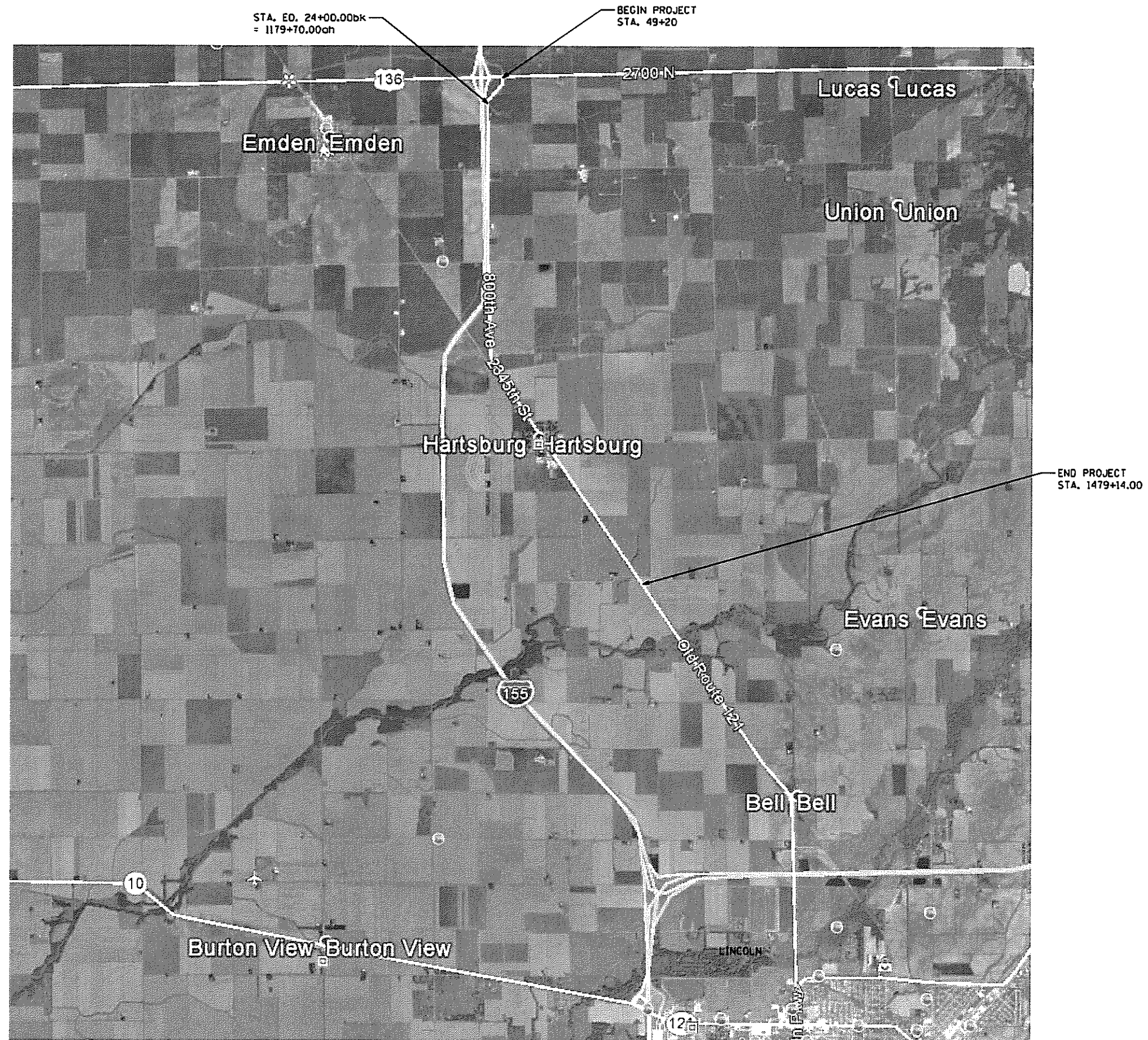
44000690 HOT-MIX ASPHALT SURFACE CORRECTION					
STA.	TO	STA.	LENGTH	WIDTH	AREA
			FT	FT	SQ YD
49+20 TO 24+00			2520	27	7560.00
STA. EQ. 24+00bk = 1179+70ah					
1179+70 TO 1479+14			29944	27	89832.00
TOTAL			32464		97392.00

STATE OF ILLINOIS  
DEPARTMENT OF TRANSPORTATION

SCHEDULES

SCALE \_\_\_\_\_ SHEET \_\_\_\_\_ OF \_\_\_\_\_ SHEETS STA. \_\_\_\_\_ TO STA. \_\_\_\_\_

F.A.S. RTE.	SECTION	COUNTY	TOTAL SHEETS	SHEET NO.
1774	(109.110) Q-1, PP	LOGAN	6	4
CONTRACT NO. 72L29				
ILLINOIS FED AID PROJECT				



MODEL: Default  
 FILE NAME: C:\G072139\G072139.dwg  
 USER: sharprd  
 PLOT DATE: 9/21/2019

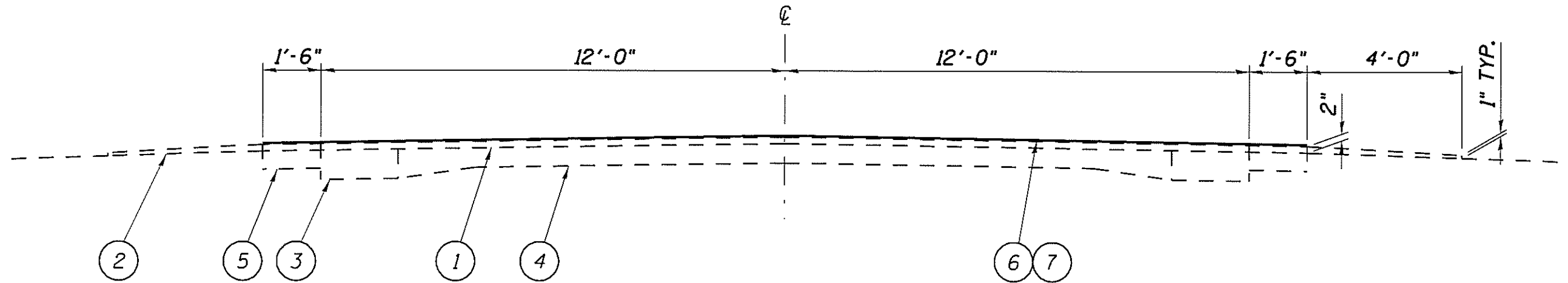
USER NAME = sharprd	DESIGNED - _____	REVISED - _____
DRAWN - _____	REVISIONS - _____	
PLOT SCALE = 2' 0000" / 1" in	CHECKED - _____	REVISED - _____
PLOT DATE = 9/21/2019	DATE - _____	REVISED - _____

**STATE OF ILLINOIS  
DEPARTMENT OF TRANSPORTATION**

**LOCATION MAP**

SCALE \_\_\_\_\_ SHEET \_\_\_\_\_ OF \_\_\_\_\_ SHEETS STA. \_\_\_\_\_ TO STA. \_\_\_\_\_

F.A.S. RTE.	SECTION	COUNTY	TOTAL SHEETS	SHEET NO.
1774	(109.110) O-1, PP	LOGAN	6	5
CONTRACT NO. 72L39				
ILLINOIS FED AID PROJECT				



FAS 1774  
 STA. 49+20 TO 24+00  
 STA. QU. 24+00bk = 1179+70ah  
 STA. 1179+70 TO 1479+14

**LEGEND**

- 1- EXIST. H.M.A. SURFACE
- 2- EXIST. AGG. SHOULDER
- 3- EXIST. P.C.C. WIDENING
- 4- EXIST. 9-6-9 P.C.C. PAVEMENT
- 5- EXIST. H.M.A. SHOULDER
- 6- PROP. BITUMINOUS SURFACE TREATMENT A-2
- 7- PROP. HOT-MIX ASPHALT SURFACE REMOVAL, 1/4"

NCDEL Deshur  
 11/14/2019 10:00 AM  
 C:\G:\CONTRACTS\1774\1774\_10.DWG - FAS 1774 10.DWG - 12/11/19 10:00 AM - 1774.dwg

USER NAME = shargtd	DESIGNED - _____	REVISED - _____
	DRAWN - _____	REVISED - _____
PLOT SCALE = 3/3200' = 1/16"	CHECKED - _____	REVISED - _____
PLOT DATE = 02/12/2019	DATE - _____	REVISED - _____

STATE OF ILLINOIS  
 DEPARTMENT OF TRANSPORTATION

TYPICAL SECTION

SCALE \_\_\_\_\_ SHEET \_\_\_\_\_ OF \_\_\_\_\_ SHEETS STA. \_\_\_\_\_ TO STA. \_\_\_\_\_

F.A.S. RTE.	SECTION	COUNTY	TOTAL SHEETS	SHEET NO.
1774	(109.110) Q-1, PP	LOGAN	6	6
CONTRACT NO. 72L39			ILLINOIS FED AID PROJECT	