

11-08-2019 LETTING ITEM 044

STATE OF ILLINOIS
DEPARTMENT OF TRANSPORTATION

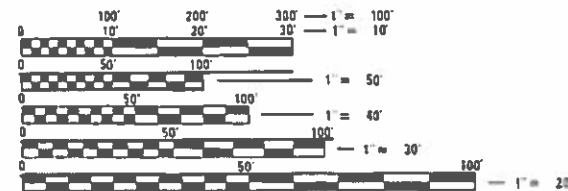
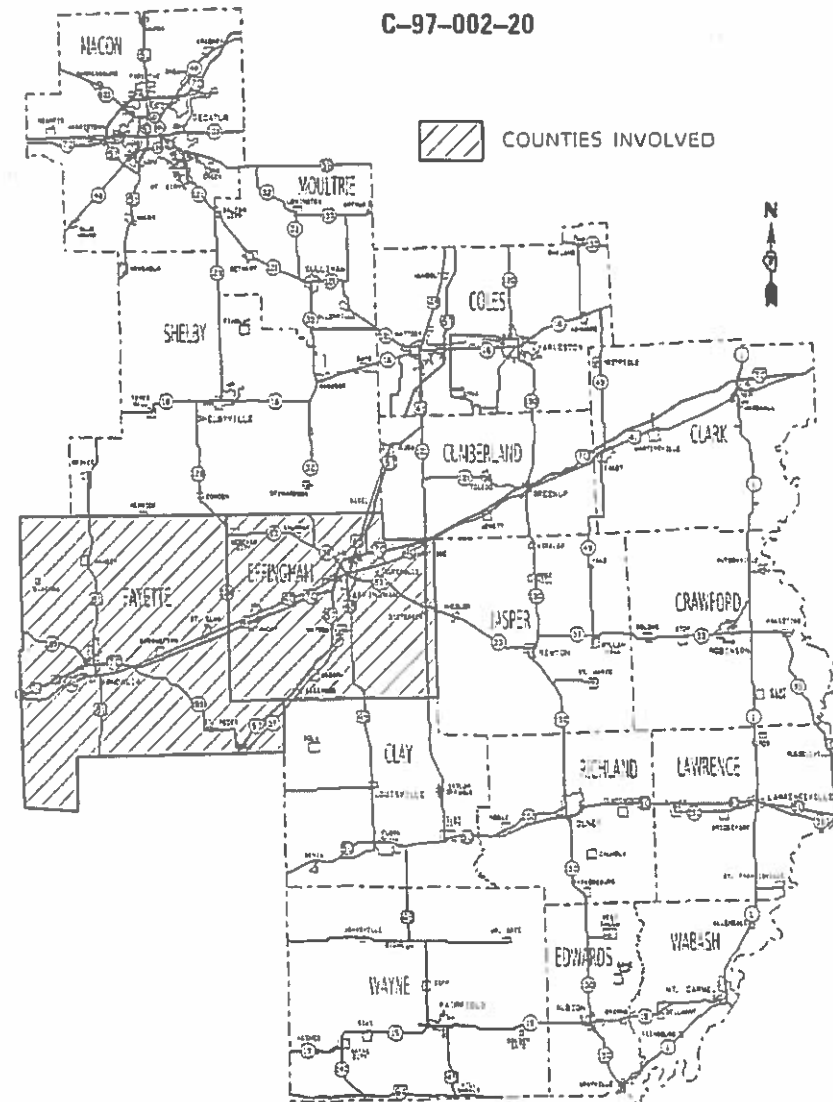
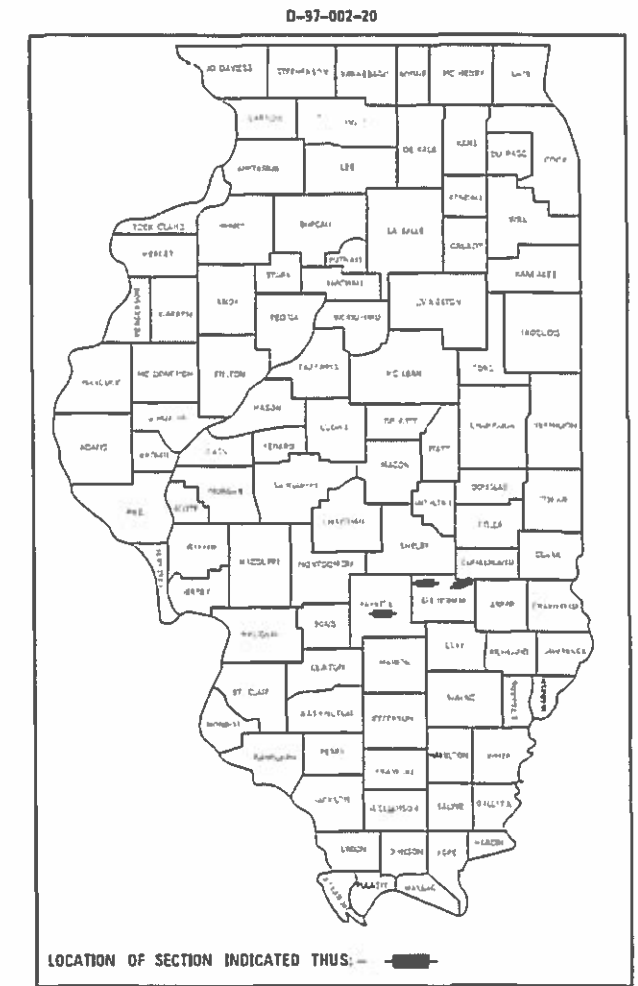
PROPOSED HIGHWAY PLANS

VARIOUS ROUTES
SECTION D7 BRIDGE PAINTING 2020-1
PROJECT STP-97HA(952)
BRIDGE PAINTING
EFFINGHAM & FAYETTE COUNTY

FOR INDEX OF SHEETS, SEE SHEET NO. 2

F.A. SITE	SECTION	COUNTY	TOTAL SHEET NO.
	D7	EFFINGHAM	27
			CONTRACT NO. 74926

VARIOUS
BY SHERYL HAINING 1020-1
EFFINGHAM & FAYETTE



FULL SIZE PLANS HAVE BEEN PREPARED USING STANDARD ENGINEERING SCALES. REDUCED SIZED PLANS WILL NOT CONFORM TO STANDARD SCALES. IN MAKING MEASUREMENTS ON REDUCED PLANS, THE ABOVE SCALES MAY BE USED.

J.U.L.I.E.
JOINT UTILITY LOCATION INFORMATION FOR EXCAVATORS
1-800-892-0123
OR 811

PROJECT ENGINEER: THOMAS RONAN
PROJECT MANAGER: THOMAS RONAN
PHONE: (217)-342-8320
CONTRACT NO. 74926

STATE OF ILLINOIS
DEPARTMENT OF TRANSPORTATION

SUBMITTED August 21, 2019
Jeffrey P. Myrberg
REGIONAL ENGINEER

Oct 4, 2019
Scott A. Etkin
ENGINEER OF DESIGN AND ENVIRONMENT

Oct 4, 2019
Paul J. [Signature]
DIRECTOR OF HIGHWAYS PROJECT IMPLEMENTATION

PRINTED BY THE AUTHORITY
OF THE STATE OF ILLINOIS

80% FED
20% STATE

SUMMARY OF QUANTITIES			TOTAL QUANTITIES	CONSTRUCTION TYPE CODE		
CODE NO	ITEM	UNIT		0047 EFFINGHAM	0047 FAYETTE	
67100100	MOBILIZATION	L SUM	1	0.6	0.4	
70100207	TRAFFIC CONTROL AND PROTECTION, STANDARD	EACH	10	6	4	
	701402					
70100450	TRAFFIC CONTROL AND PROTECTION, STANDARD	L SUM	1	0.33	0.67	
	701201					
70400100	TEMPORARY CONCRETE BARRIER	FOOT	4000	2400	1600	
70400200	RELOCATE TEMPORARY CONCRETE BARRIER	FOOT	4000	2400	1600	
70600250	IMPACT ATTENUATORS, TEMPORARY (NON-REDIRECTIVE), TEST LEVEL 3	EACH	10	6	4	
70600350	IMPACT ATTENUATORS, RELOCATE (NON-REDIRECTIVE), TEST LEVEL 3	EACH	10	6	4	
X7040125	PINNING TEMPORARY CONCRETE BARRIER	EACH	1200	720	480	
Z0007112	CONTAINMENT AND DISPOSAL OF LEAD PAINT CLEANING RESIDUES	L SUM	1	0.67	0.33	
Z0007114	CONTAINMENT AND DISPOSAL OF NON-LEAD PAINT CLEANING RESIDUES	L SUM	1		1	
Z0010501	CLEANING AND PAINTING STEEL BRIDGE NO. 1	L SUM	1	1		

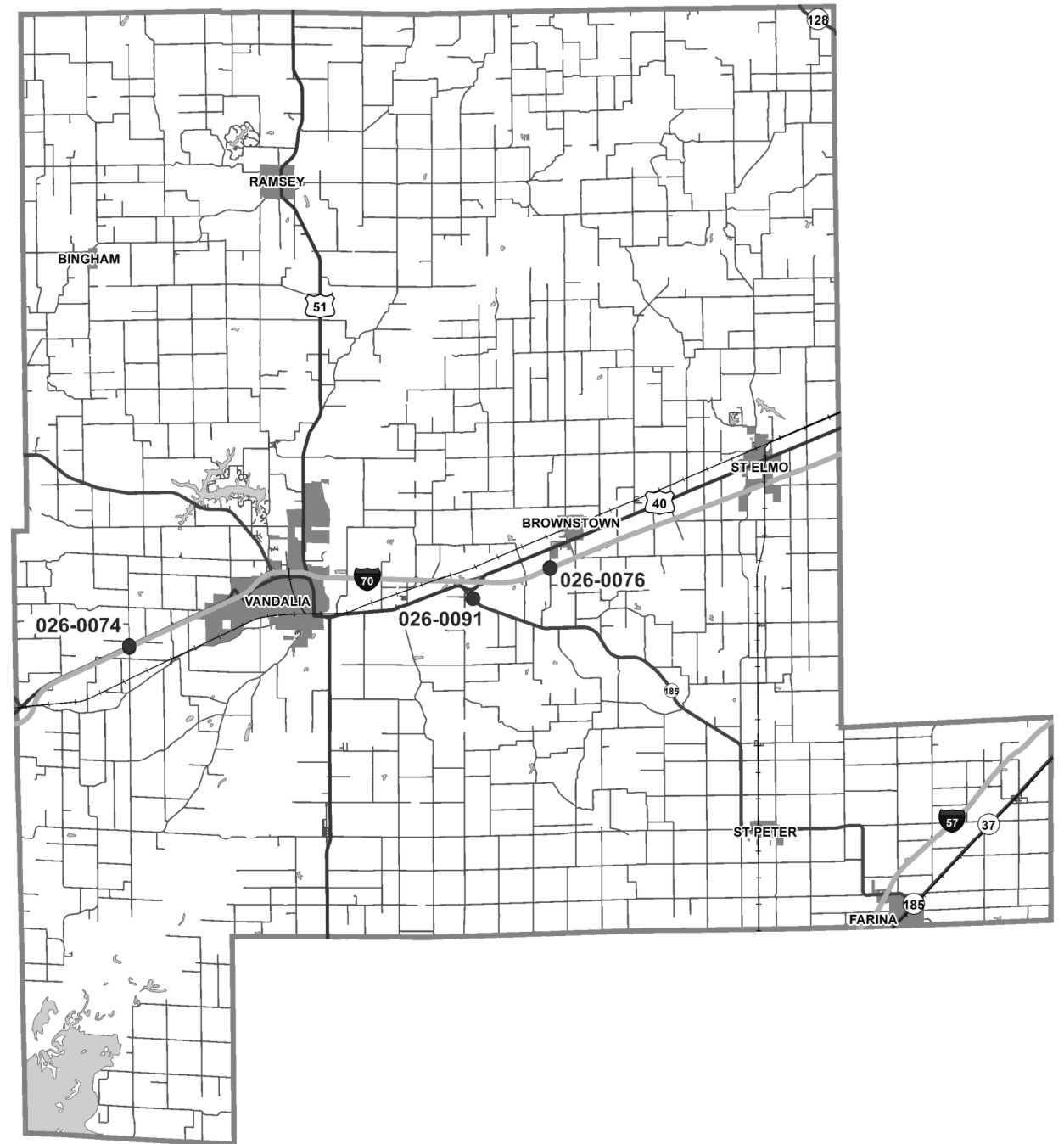
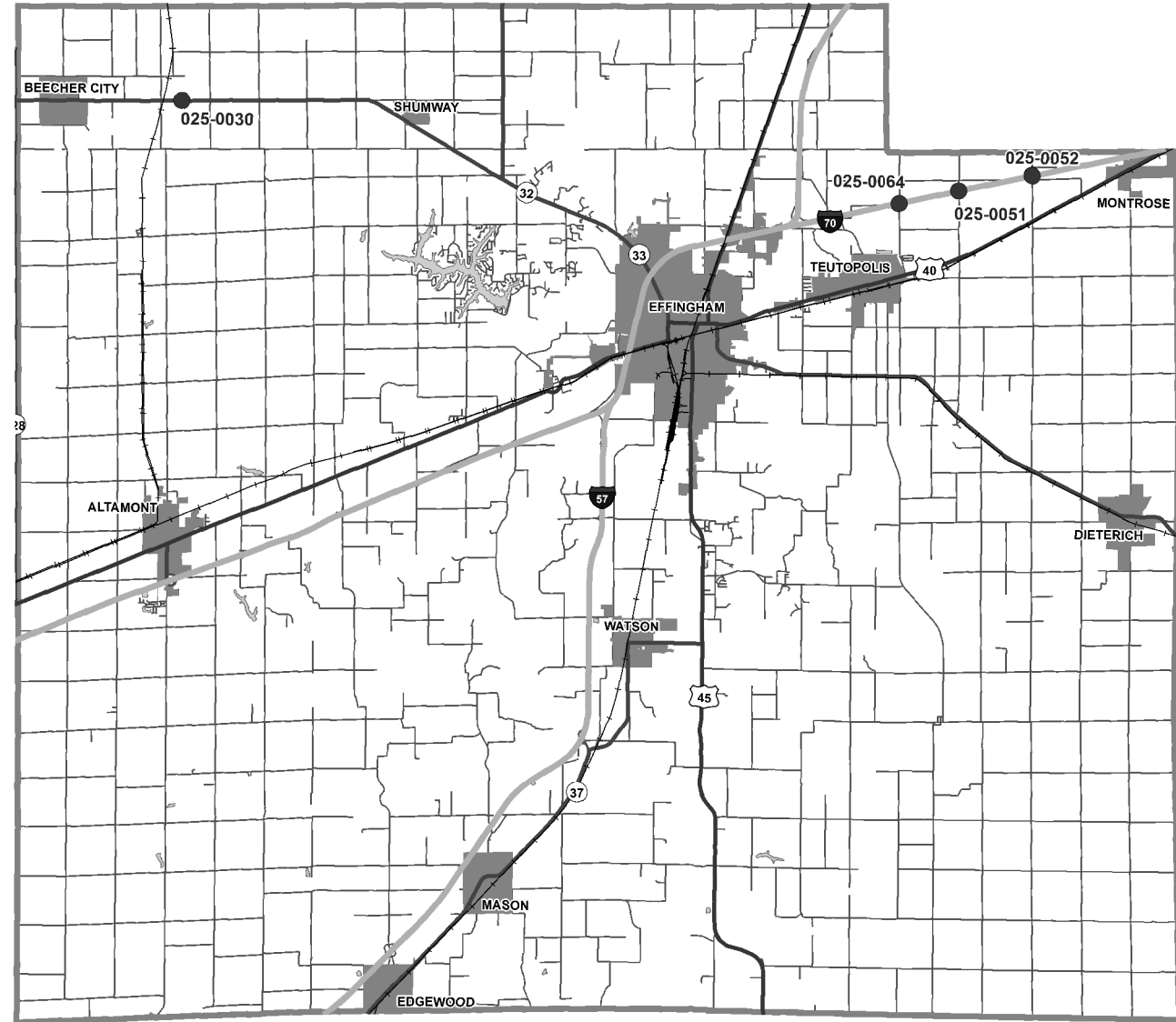
80% FED
20% STATE

SUMMARY OF QUANTITIES			TOTAL QUANTITIES	CONSTRUCTION TYPE CODE		
CODE NO	ITEM	UNIT		0047 EFFINGHAM	0047 FAYETTE	
Z0010502	CLEANING AND PAINTING STEEL BRIDGE NO. 2	L SUM	1	1		
Z0010503	CLEANING AND PAINTING STEEL BRIDGE NO. 3	L SUM	1	1		
Z0010504	CLEANING AND PAINTING STEEL BRIDGE NO. 4	L SUM	1	1		
Z0010505	CLEANING AND PAINTING STEEL BRIDGE NO. 5	L SUM	1		1	
Z0010506	CLEANING AND PAINTING STEEL BRIDGE NO. 6	L SUM	1		1	
Z0010507	CLEANING AND PAINTING STEEL BRIDGE NO. 7	L SUM	1		1	

MODEL: Default
 FILE: Model: 20190828.ctb
 PROJECT: 74926
 CADD: C:\Users\steffenmk\Documents\DOT Office\DOT\74926\74926-Sub-S00.dgn
 PLOT DATE: 8/21/2019

* VARIOUS
 ** D7 BRIDGE PAINTING 2020-1
 *** EFFINGHAM & FAYETTE

USER NAME = steffenmk	DESIGNED -	REVISED -	STATE OF ILLINOIS DEPARTMENT OF TRANSPORTATION	SUMMARY OF QUANTITIES			F.A.* RTE.	SECTION	COUNTY	TOTAL SHEETS	SHEET NO.
PLOT SCALE = 100,0000' / in.	DRAWN -	REVISED -					*	**	***	27	4
PLOT DATE = 8/21/2019	CHECKED -	REVISED -		SCALE: N/A			CONTRACT NO. 74926				
	DATE -	REVISED -		SHEET 1 OF 1 SHEETS STA. TO STA.			ILLINOIS FED. AID PROJECT				



MODEL: Default
 FILE: \\blm1c2-prod\planroom\ada\illinois\pwr\DOT\Documents\DOT_Offices\Dist\ct_7\Projects\74926\CADD\DATA\CAD\Sheet\025-0030-0074.dgn

USER NAME = steffemk	DESIGNED -	REVISED -
PLOT SCALE = 100,0000' / in.	DRAWN -	REVISED -
PLOT DATE = 8/21/2019	CHECKED -	REVISED -
	DATE -	REVISED -

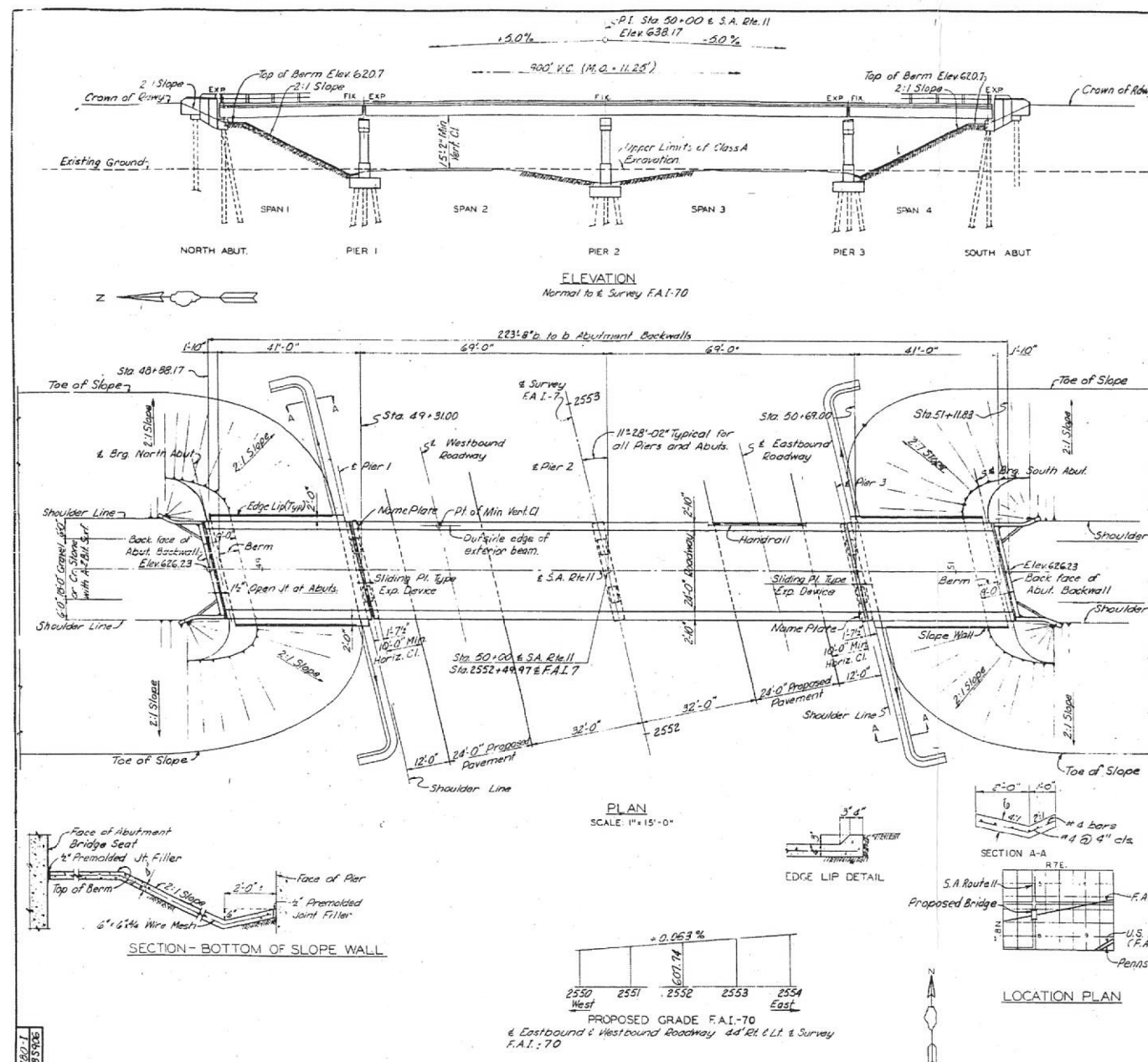
**STATE OF ILLINOIS
 DEPARTMENT OF TRANSPORTATION**

LOCATION MAPS

SCALE: N/A SHEET 1 OF 1 SHEETS STA. TO STA.

* VARIOUS
 ** D7 BRIDGE PAINTING 2020-1
 *** EFFINGHAM & FAYETTE

F.A.* RTE.	SECTION	COUNTY	TOTAL SHEETS	SHEET NO.
*	**	***	27	5
CONTRACT NO. 74926				
ILLINOIS FED. AID PROJECT				



Bench Mark: Spike in telephone pole west side R/W North and South road 2nd pole South of Sta 2552+40 Elev. 607.32

F.A.I. RT. NO.	SECTION	COUNTY	TOTAL SHEETS	SHEET NO.
70	25-34B-2	Effingham	26	20
FED. ROAD DIST. NO. 7		ILLINOIS	FED. AID PROJ. NO.	

GENERAL NOTES

- SPECIFICATIONS:** Illinois Division of Highways "Standard Specifications for Road and Bridge Construction" 1958 Edition and Special Provisions.
- DESIGN:** In accordance with Division III of the AASHTO "Standard Specifications for Highway Bridges" 1953 Edition except as modified by the provisions, exceptions and interpretations of the notes on these drawings.
- DESIGN LOADING:**
Live Load: H15-S12-44
Dead Load: Provision is made for a future wearing surface weighing 18 pounds per square foot.
- DESIGN UNIT STRESSES FOR CONCRETE:**
Concrete in flexure:
Superstructure ----- 1,800psi (maximum)
Substructure ----- 1,400psi (maximum)
V_c (footings) ----- 75psi (maximum)
Reinforcing Steel ----- 20,000psi (maximum)
Structural Steel ----- 18,000psi (maximum)
- CONCRETE:** Class X Concrete shall be used throughout.
- REINFORCEMENT:** All dimensions to reinforcing steel on the drawings are to center line of bar except where the clear distance from face of concrete is noted. Reinforcing shall be lapped a minimum of 20 diameters at splices unless shown or noted otherwise on the drawings.
- BEVELED EDGES:** All exposed edges of concrete shall be beveled 3/4" unless otherwise shown or noted.
- EMBANKMENTS:** Embankments in the region of the abutments shall be made in accordance with Section 16 of the Standard Specifications. This shall be done prior to abutment construction.
- STRUCTURAL STEEL:** Structural steel for welding shall comply with A.S.T.M. designation A373, see Article 12.1.1 of the Standard Specifications.
- ANCHOR BOLTS:** The Contractor shall drill the holes in the substructure and set the anchor bolts for beam bearings. Reinforcing steel must be secured accurately in position to avoid interference with drilling for anchor bolts.
- BEARING AREAS:** Bearing to receive superstructure shall be finished smooth and level at the proper elevation.
- PAINT:** All structural steel shall be given one shop coat of red lead paint and two field coats of aluminum paint in accordance with Articles 56.1 thru 56.5 of the Standard Specifications. All paint shall be furnished and applied by the Contractor involved.
- PILE DESIGN LOADS:** 30 Tons maximum per pile for Concrete piles and 20 Tons maximum per pile for Timber piles except 10 Tons for wing wall piles.
- PILE DRIVING:** All piling shall be driven into the hard till strata indicated on the Log of Borings and to a bearing value of not less than the above maximum design load. For the abutments a bored hole at each concrete pile shall be provided through the embankment fill down to natural ground. After the piles are driven the space around the piles shall be filled with sand. The cost of this work shall be considered as incidental to the driving of piles.
- CONCRETE PILES:** Where "Concrete Piles" are called for on the plans, the piles shall be either Precast Concrete Piles or Metal Shell Cast-in-Place Concrete Piles as shown on the bridge plans. See Special Provisions.

Item	Schedule of Estimated Quantities					Subtotal	Grand Total
	Units	N. Abut.	Pier 1	Pier 2	S. Abut.		
Class A Excavation for Structures	Cu. Yds.		55	140	55		250
Test Piles (Concrete)	Each		1			1	2
Furnishing Concrete Piles	Lin. Ft.		174			174	348
Driving Concrete Piles	Lin. Ft.		174			174	348
Test Piles (Creosoted Timber)	Each		1	1	1		3
Furnishing Creosoted Timber	Lin. Ft.		40	204	312	204	800
Driving Timber Piles	Lin. Ft.		40	204	312	204	800
Class X Concrete	Cu. Yds.	26.6	46.8	63.6	46.8	26.6	183.9
Reinforcement Bars	Lbs.	2,477	5,244	6,764	5,244	2,477	33,253
Structural Steel	Lbs.						186,326
Metal Handrail	Lin. Ft.						475
Slope Wall	Sq. Yds.	154				154	308
Name Plate	Each		1			1	2

ROCHESTER AND SOGELL
ENGINEERS-ARCHITECTS
BALTIMORE, MARYLAND

EVERSHUP AND PARCEL, INC.
ENGINEERS-ARCHITECTS
ST. LOUIS, MISSOURI

BRIDGE OVER - FAI - 70 CARRYING S.A. ROUTE 11

STATION - 2552+4397
F.A.I. ROUTE - 70
SECTION - 25-34B-2
EFFINGHAM COUNTY, ILLINOIS

DRAWN: P. Huber DATE: Aug. 1958
CHECKED: W.L. Miller DATE: Aug. 1958
APPROVED: DATE: _____

SCALE: AS SHOWN

FOR INFORMATION ONLY

USER NAME = steffenk	DESIGNED -	REVISED -
	DRAWN -	REVISED -
PLOT SCALE = 100,000' / in.	CHECKED -	REVISED -
PLOT DATE = 8/21/2019	DATE -	REVISED -

STATE OF ILLINOIS
DEPARTMENT OF TRANSPORTATION

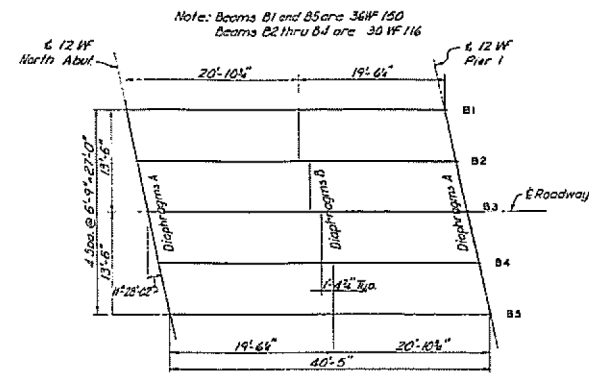
SCALE: N/A	SHEET 1	OF 22 SHEETS	STA.	TO STA.
EXISTING PLAN		STRUCTURE 025-0051		

F.A.I. RTE.	SECTION	COUNTY	TOTAL SHEETS	SHEET NO.
*	**	***	27	6
CONTRACT NO. 74926				
ILLINOIS FED. AID PROJECT				

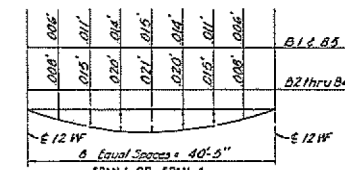
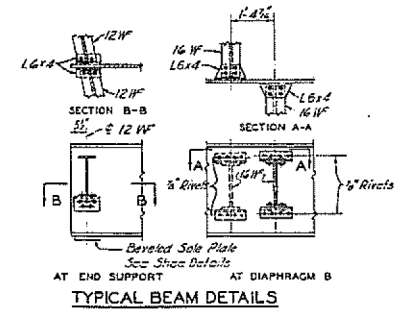
* VARIOUS
** D7 BRIDGE PAINTING 2020-1
*** EFFINGHAM & FAYETTE

MODEL: Default FILE: \\nls\p\pub\pubroom\dat\illinois\gov\PI\DOT\Documents\DOT - Office\IDirect_7\Projects\74926\CADD\Drawings\DOT - Office\IDirect_7\926-Struct\Illinois.dgn

F.A. RTE. NO.	SECTION	COUNTY	TOTAL SHEETS	SHEET NO.
70	25-SMB-283	Effingham	27	7
FED. ROAD DIST. NO. 7 ILLINOIS FED. AID PROJ. NO.				



FRAMING PLAN
Span 1 shown, Span 4 same.



DEAD LOAD DEFLECTION ORDINATES
Note: Beams are not to be cambered.
Deflections are for weight of slab only.

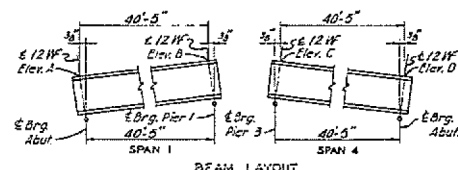


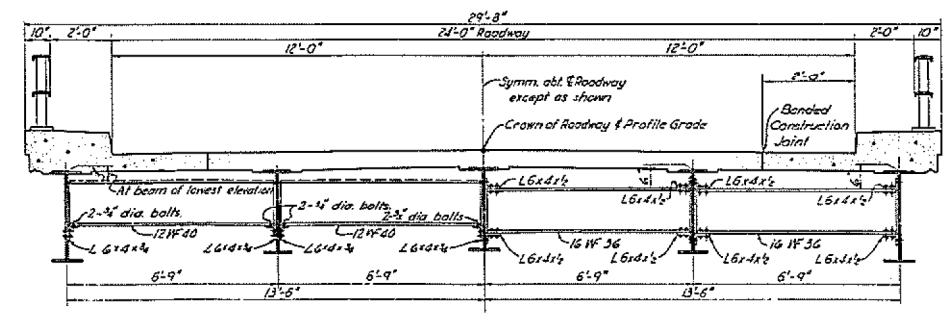
TABLE OF ELEVATIONS

BEAM	POINT			
	A	B	C	D
B1	625.47	625.83	626.03	625.54
B2	625.59	626.00	626.02	625.62
B3	625.54	626.05	626.05	625.64
B4	625.62	626.02	626.00	625.59
B5	625.56	625.93	626.00	625.57

Note: Elevations given at top of W beams are theoretical and do not include any corrections for dead load deflections.

NOTES

All rivets 3" unless otherwise noted.
All longitudinal dimensions are horizontal and are measured at top of W.



HALF CROSS SECTION NEAR DIAPHRAGM A **HALF CROSS SECTION NEAR DIAPHRAGM B**

Note: All Diaphragms A shall be level.

Note: Do not scale this drawing. Follow dimensions.

ROCHESTER AND GOODALL ENGINEERS INCORPORATED
34 E. W. ILLINOIS

EVERHUP AND PARCEL, INC. ENGINEERS-ARCHITECTS
ST. LOUIS, MISSOURI

BRIDGE OVER - F.A. 1-70 CARRYING S.A. ROUTE 11

STATION - 2532 + 49.97
F.A. ROUTE - 70
SECTION - 25-SMB-283
EFFINGHAM COUNTY, ILLINOIS

DRAWN: K.P. Swart DATE: Aug 1958
CHECKED: H.L. Miller DATE: Aug 1958
APPROVED: _____ DATE: _____ SCALE: _____

BEAM SPANS 1 & 4



FOR INFORMATION ONLY

MODEL: Default FILE: \\blm\c:\pub\pubroom\dat\illinois\gov\pww\DOT\Documents\DOT - Offices\Illinet\7\Projects\74926\CADD\Drawings\74926-5-struct\illinois.dgn

USER NAME = steffemk	DESIGNED -	REVISED -
DRAWN -	REVISED -	
PLOT SCALE = 100.0000' / in.	CHECKED -	REVISED -
PLOT DATE = 8/21/2019	DATE -	REVISED -

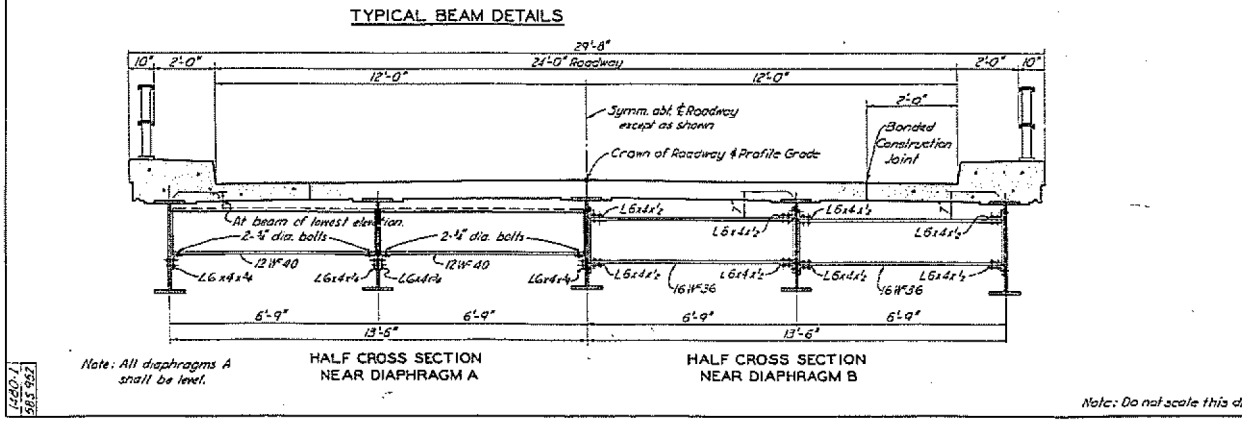
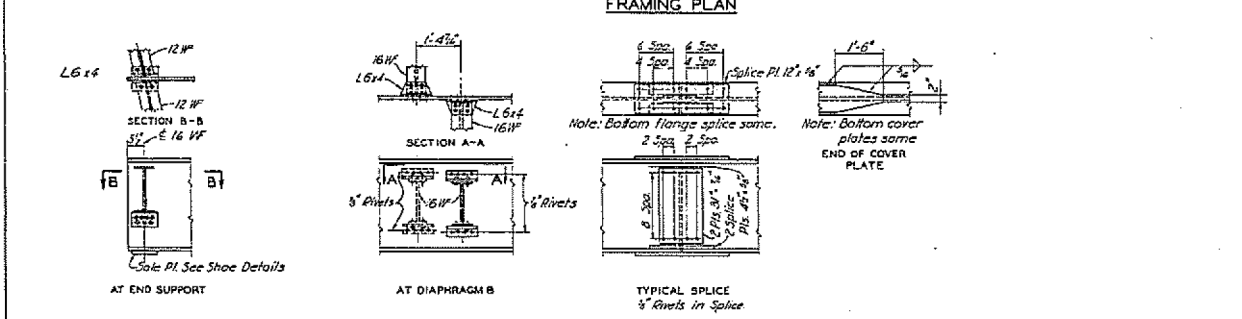
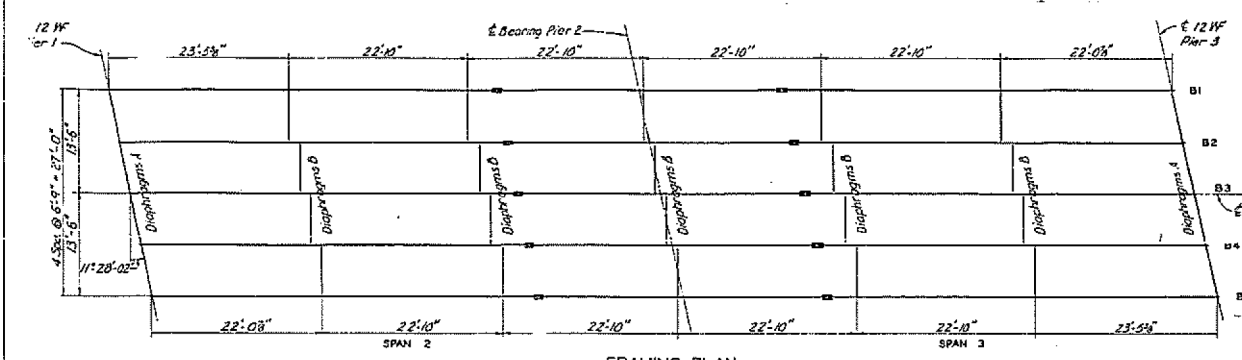
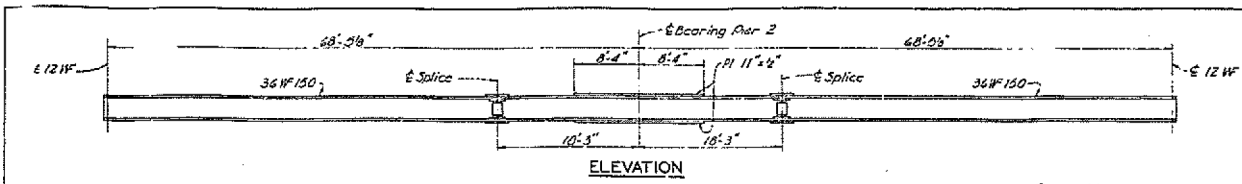
**STATE OF ILLINOIS
DEPARTMENT OF TRANSPORTATION**

**EXISTING PLAN
STRUCTURE 025-0051**

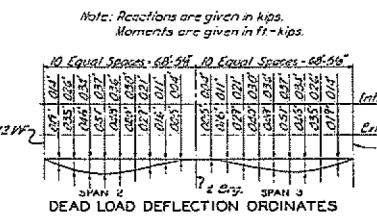
SCALE: N/A SHEET 2 OF 22 SHEETS STA. TO STA.

* VARIOUS
** D7 BRIDGE PAINTING 2020-1
*** EFFINGHAM & FAYETTE

F.A. RTE.	SECTION	COUNTY	TOTAL SHEETS	SHEET NO.
*	**	***	27	7
CONTRACT NO. 74926				
ILLINOIS FED. AID PROJECT				



ITEM	MOMENTS			REACTIONS		
	B	C	D	A	C	E
D.L.	281	563	281	18	78	18
L.L.	384	333	384	23	41	23
Total	665	896	665	41	119	41



BEAM	POINT				
	A	B	C	D	E
B1	629.89	626.16	626.16	626.16	625.93
B2	626.01	626.26	626.26	626.26	626.03
B3	626.06	626.30	626.30	626.30	626.02
B4	626.03	626.26	626.26	626.26	626.01
B5	625.93	626.16	626.16	626.16	625.89

F.A. RTE.	SECTION	COUNTY	TOTAL SHEETS	SHEET NO.
70	25-54	Effingham	27	8

NOTES
 All rivets are 1/2" unless otherwise noted.
 All cover plates and splice plates shall be universal mill plates.
 All longitudinal dimensions shown are horizontal and are measured at top of W.

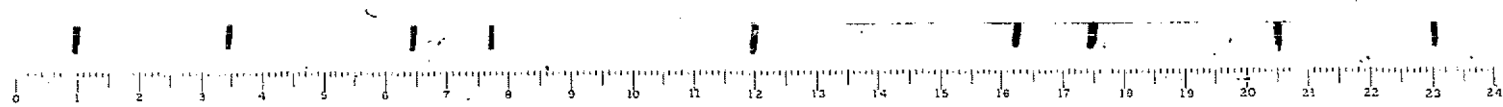
ROCHESTER AND GODDARD ENGINEERS INCORPORATED
 BALDUIN, ILLINOIS

EVERAUGH AND PARCEL, INC.
 ENGINEERS-ARCHITECTS
 ST. LOUIS, MISSOURI

BRIDGE OVER - F.A.1.-70 CARRYING S.A. ROUTE 11
 STATION - 2552 + 49.97
 F.A.1. ROUTE - 70
 SECTION - 25-SHB-2 & 3
 EFFINGHAM COUNTY, ILLINOIS

BEAM SPANS 2 & 3

SCALE: NONE



FOR INFORMATION ONLY

USER NAME = steffenk	DESIGNED -	REVISED -
PLOT SCALE = 100.0000' / in.	DRAWN -	REVISED -
PLOT DATE = 8/21/2019	CHECKED -	REVISED -
	DATE -	REVISED -

STATE OF ILLINOIS
 DEPARTMENT OF TRANSPORTATION

SCALE: N/A	SHEET 3	OF 22 SHEETS	STA.	TO STA.
------------	---------	--------------	------	---------

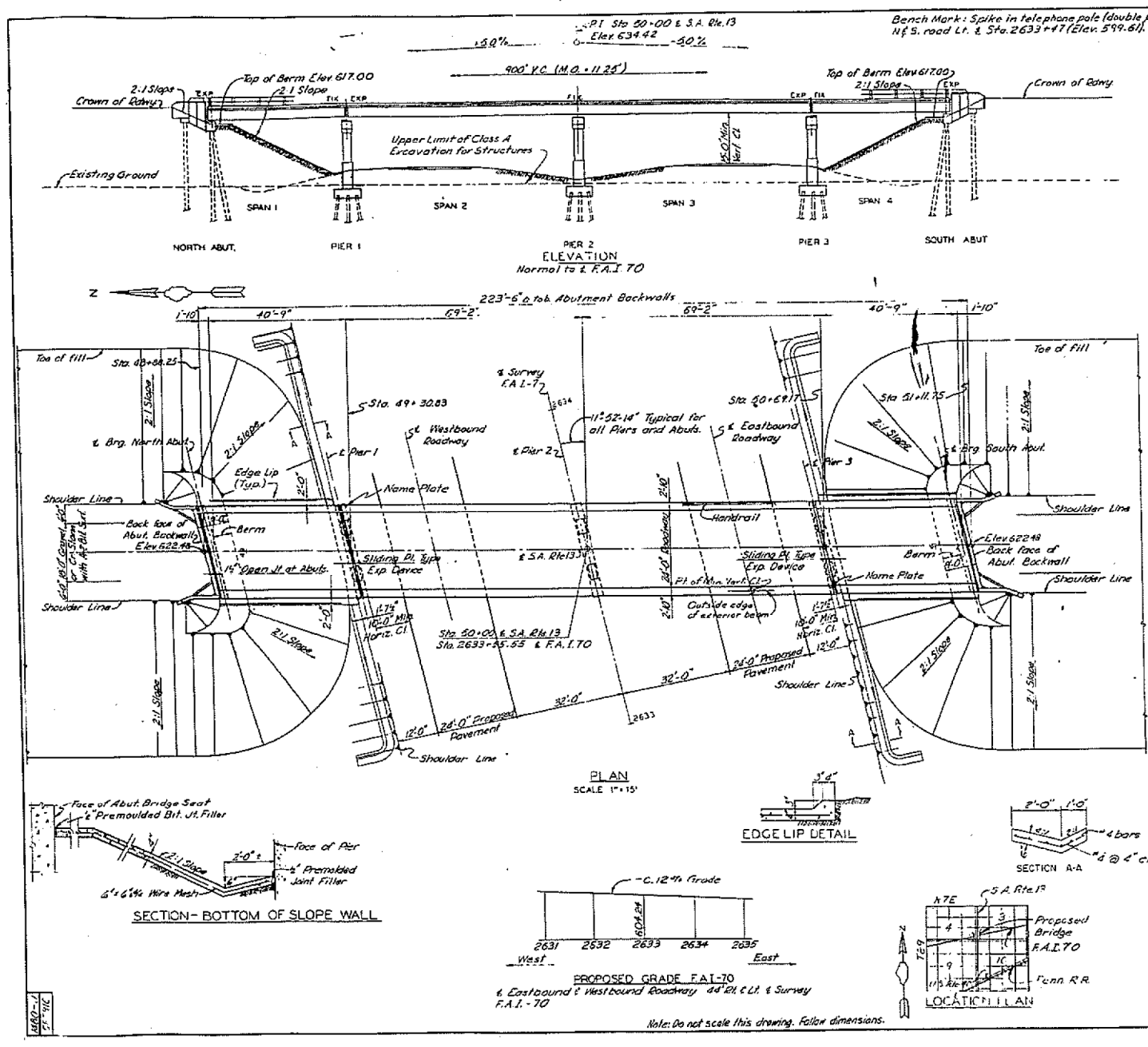
F.A. RTE.	SECTION	COUNTY	TOTAL SHEETS	SHEET NO.
**	**	***	27	8

CONTRACT NO. 74926

ILLINOIS FED. AID PROJECT

MODEL: Default
 FILE: h:\miller\p\pub\hroom\da\illinois\gov\p\pub\DOT\Documents\DOT - Office\Drawings\74926\CADD\Sheet\74926-SHB-2&3.dwg
 PROJECT: 74926\CADD\Sheet\74926-SHB-2&3.dwg
 DATE: 8/21/2019

* VARIOUS
 ** D7 BRIDGE PAINTING 2020-1
 *** EFFINGHAM & FAYETTE



F.A.I. NO.	SECTION	COUNTY	TOTAL SHEETS	SHEET NO.
70	25-SMB-2.4.3	EFFINGHAM	46	25

GENERAL NOTES:

1. DESIGNATION: Illinois Division of Highways "Standard Specifications for Road and Bridge Construction" 1958 Edition and Special Provisions.

2. DESIGN: In accordance with Division II of the A.A.S.H.O. "Standard Specifications for Highway Bridges," 1953 Edition except as modified by the provisions, exceptions and interpretations of notes on these drawings.

3. LIVE LOAD: HS-20-44

4. DEAD LOAD: Provision is made for a future wearing surface weighing 18 pounds per square foot. Impact No impact is included for substructure units.

5. CONCRETE UNIT STRESS: Substructure 400psi (Maximum) 1400 psi (Maximum) 7 psi (Maximum) Reinforcing Steel 25,000psi (Maximum) Structural Steel 16,000psi (Maximum)

6. CONCRETE: Class X shall be used throughout.

7. BEVELED EDGES: All exposed faces of concrete shall be beveled 1/4" unless otherwise noted or shown.

8. REINFORCEMENT: All dimensions to reinforcing steel in the drawings are to centerline of bar except where the clear distance from the face of concrete is noted. Reinforcing shall be lapped a minimum of 20 diameters of splices unless otherwise shown or noted on the drawings.

9. PAINT: All Structural Steel shall be given one shop coat of red lead paint and two field coats of aluminum paint in accordance with Articles 561 thru 56.5 of the Standard Specifications. All paint shall be furnished and applied by the Contractor involved.

10. EMBANKMENT: Embankments in the region of the abutments shall be made in accordance with Section 16 of the Standard Specifications.

11. ANCHOR BOLTS: The Contractor shall fill holes in the substructure and cast the anchor bolts or beam bearings. Reinforcing steel must be secured accurately in position to avoid interference with drilling for anchor bolts.

12. BLARING AREAS: Bearing to receive superstructure shall be finished smooth and level at the proper elevation.

13. PILE DESIGN: 20 Tons maximum per pile for timber piles except 40 Tons for wing wall piles. 30 Tons maximum per pile for concrete pile.

14. PILE DRIVING: All piling shall be driven into a firm fill strata indicated on the Log of Borings and to a bearing value of not less than the above maximum design load.

15. For the abutments, a bored pile at each concrete pile shall be provided thru the embankment fill down to natural ground. After the piles are driven, the space around the piles shall be filled with sand. The cost of this work shall be considered as incidental to the driving of piles.

16. CONCRETE PILES: Where "Concrete Piles" are called for on the plans, the piles shall be either Precast Concrete Piles or Metal Shell Cast-in-Place Concrete Piles as shown on the bridge plans. See Special Provisions.

17. STRUCTURAL STEEL: Structural steel for welding shall comply with A.S.T.M. designation A312. See Article 126.7 Standard Specifications.

Schedule of Estimated Quantities

Item	Units	N. Abut.	Pier 1	Pier 2	Pier 3	S. Abut.	Superst.	Total
Class A Excavation for Structures	Cu. Yds.		45	65	75			185
Forming Concrete	Sq. Yds.							2
Forming Concrete Piles	Lin. Ft.					216		414
Driving Concrete Piles	Lin. Ft.					216		414
Test Piles (Crossed Timber)	Each		1	1	1			3
Forming Crossed Timber	Lin. Ft.		40	255	312	255	40	902
Driving Timber Piles	Lin. Ft.		40	255	312	255	40	902
Class X Concrete	Cu. Yds.	26.7	56.9	63.6	56.9	26.7	183.7	414.5
Reinforcement Bars	Lbs.	247	5370	6794	5177	2477	33,275	55,444
Structural Steel	Lbs.						195,739	195,739
Metal Handrail	Lin. Ft.						475	475
Slope Wall	Sq. Yds.	139					153	306
Name Plate	Each		1		1			2

ROCHESTER AND BOWELL ENGINEERS INCORPORATED
SALINA, ILLINOIS

EVERSHED AND PARCEL, INC. ENGINEERS-ARCHITECTS
25 E. LOUIS, MARIETTA

BRIDGE OVER - F.A.I.-70 CARRYING S.A. ROUTE 13

STATION - 2633-4554
F.A.I. ROUTE - 70
SECTION - 25-SMB-2.4.3
EFFINGHAM COUNTY, ILLINOIS

DATE: Aug 1958
SCALE: AS SHOWN

FOR INFORMATION ONLY

USER NAME = steffennk	DESIGNED -	REVISED -
PLOT SCALE = 100,000' / in.	DRAWN -	REVISED -
PLOT DATE = 8/21/2019	CHECKED -	REVISED -
	DATE -	REVISED -

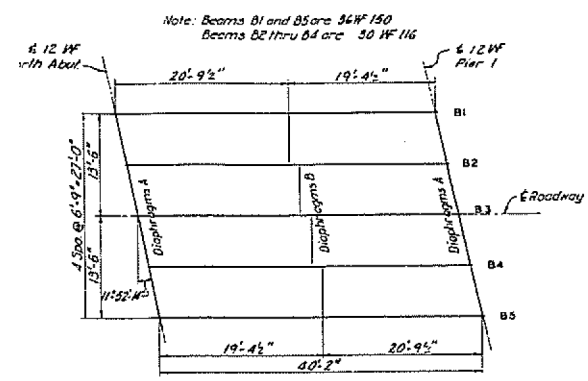
STATE OF ILLINOIS
DEPARTMENT OF TRANSPORTATION

SCALE: N/A	SHEET 5	OF 22 SHEETS	STA.	TO STA.
------------	---------	--------------	------	---------

F.A.I. RTE.	SECTION	COUNTY	TOTAL SHEETS	SHEET NO.
**	**	***	27	10
CONTRACT NO. 74926				
ILLINOIS FED. AID PROJECT				

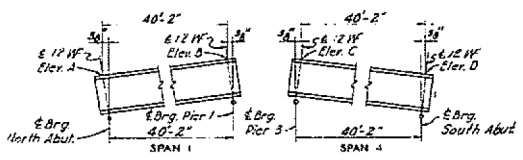
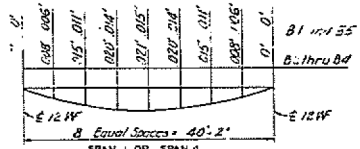
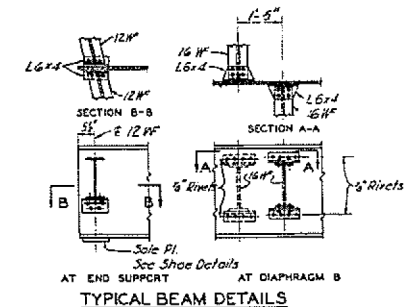
MODEL: Default
 FILE: \\p01bnc01\pub\planroom\dot\illinois\dot\p01bnc01\pub\planroom\dot\Documents\DOT - Office\Bldg\74926\CADD\Bldg\74926-std\sheet10.dgn
 PROJECT: 74926\CADD\Bldg\74926-std\sheet10.dgn

F.A.I. NO.	SECTION	COUNTY	TOTAL SHEETS	SHEET NO.
70	25-51B	Effingham	26	26
FED. ROAD DIST. NO. 7	ILLINOIS	FED. AID PROJ. NO.		



FRAMING PLAN
Span 1 shown.
Span 4 same.

PLAN SHOWING
CLIPPING TOP FLANGE

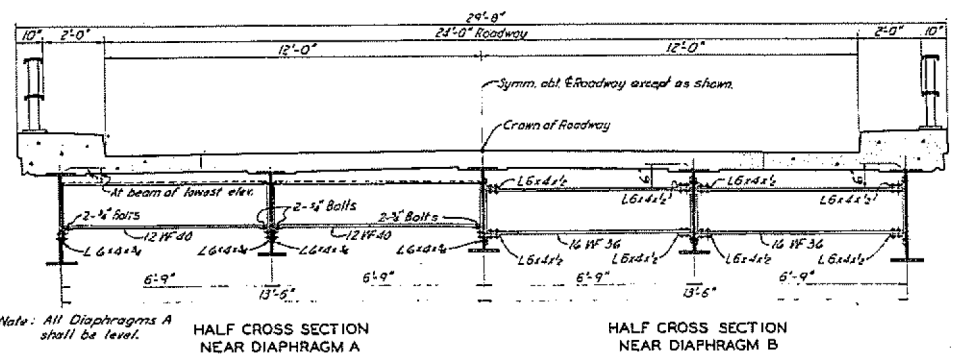


BEAM	POINT			
	A	B	C	D
B1	621.71	622.13	622.17	621.78
B2	621.88	622.28	622.26	621.87
B3	621.89	622.30	622.30	621.89
B4	621.87	622.26	622.24	621.84
B5	621.78	622.17	622.13	621.71

Note: Elevations given at top of W Beams are theoretical and do not include any corrections for dead load deflections.

NOTES

All rivets 3" unless otherwise noted.
All longitudinal dimensions are horizontal and are measured at top of W.



Note: Do not scale this drawing. Follow dimensions.

BEAM SPANS 1 & 4

ROCHESTER AND GODELL ENGINEERS INCORPORATED SALON, ILLINOIS	SWERDUP AND PARCEL, INC. ENGINEERS-ARCHITECTS ST. LOUIS, MISSOURI
BRIDGE OVER - F.A.I.-70 CARRYING S.A. ROUTE 13	
STATION - 2633 + 55.53 F.A.I. ROUTE - 70 SECTION - 25-51B-2 & 3 EFFINGHAM COUNTY, ILLINOIS	
DRAWN K.P. Frost	DATE Aug 1958
TRACED	DATE
CHECKED W. Tilgner	DATE Sept 1958
APPROVED	DATE
	SCALE: NONE



FOR INFORMATION ONLY

MODEL: Default
FILE: \\blm01c:\pub\pubroom\da\illinois\gov\PIWDOT\Documents\DOT_Offices\Dist\ct_7\Projects\74926\CADD\Drawings\74926-struct\illinois.dgn

USER NAME = steffemk	DESIGNED -	REVISED -
	DRAWN -	REVISED -
PLOT SCALE = 100.0000' / in.	CHECKED -	REVISED -
PLOT DATE = 8/21/2019	DATE -	REVISED -

STATE OF ILLINOIS
DEPARTMENT OF TRANSPORTATION

EXISTING PLAN
STRUCTURE 025-0052

SCALE: N/A SHEET 6 OF 22 SHEETS STA. TO STA.

* VARIOUS
** D7 BRIDGE PAINTING 2020-1
*** EFFINGHAM & FAYETTE

F.A.I. RTE.	SECTION	COUNTY	TOTAL SHEETS	SHEET NO.
*	**	***	27	11
CONTRACT NO. 74926				
ILLINOIS FED. AID PROJECT				

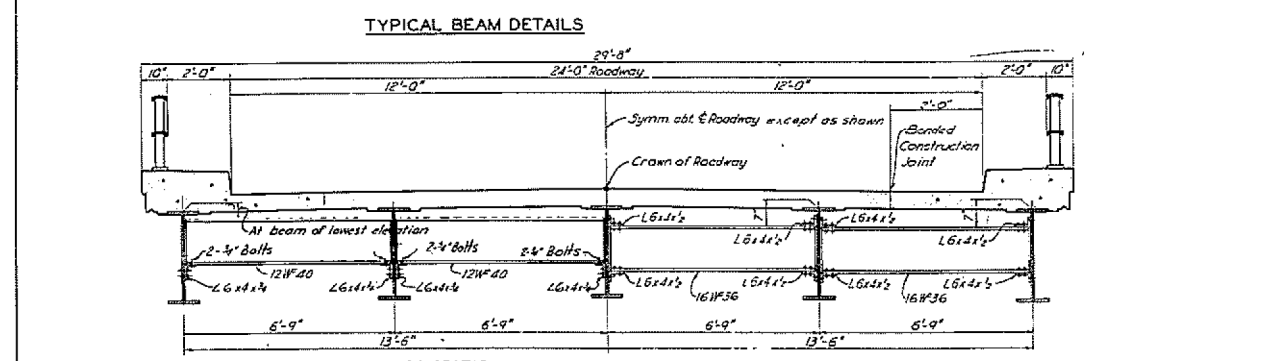
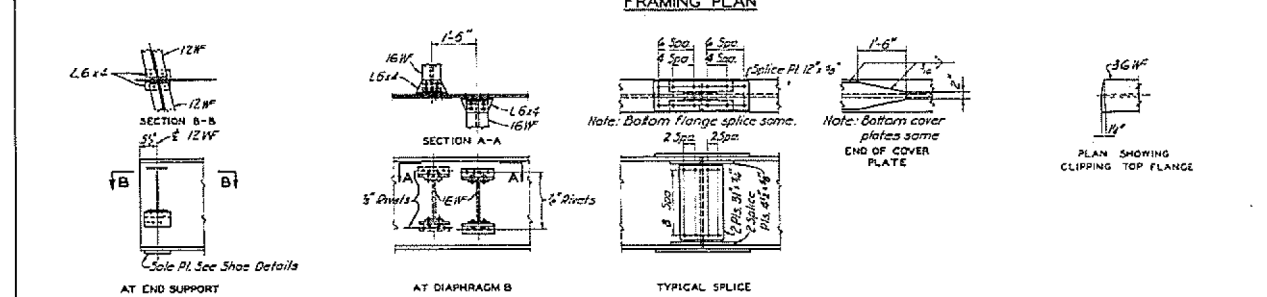
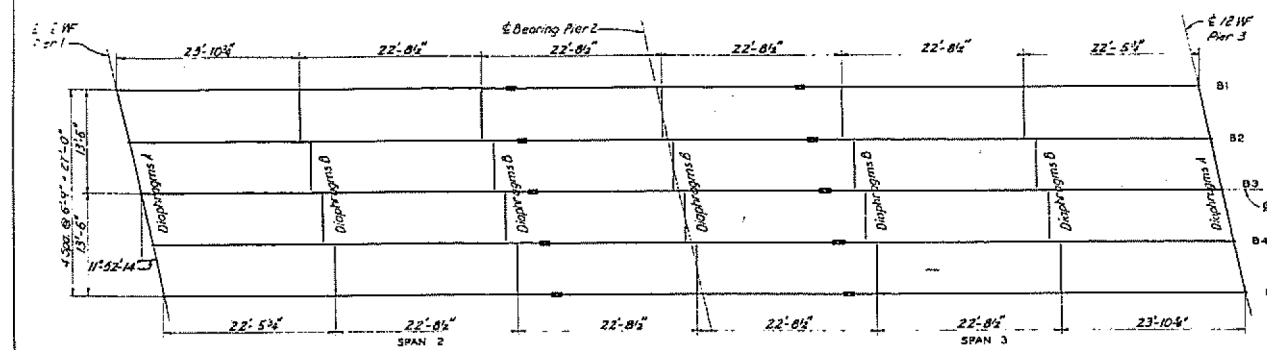
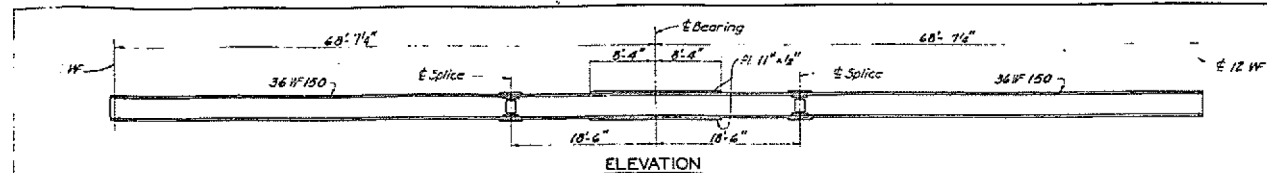


TABLE OF MAXIMUM MOMENTS AND REACTIONS

ITEM	MOMENTS			REACTIONS		
	B	C	D	A	C	E
D.L.	281	223	291	78	78	78
L.L.	184	233	284	41	41	23
I	140	55	100	7	11	7
Total	605	511	675	126	130	108

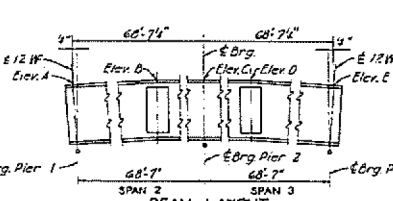
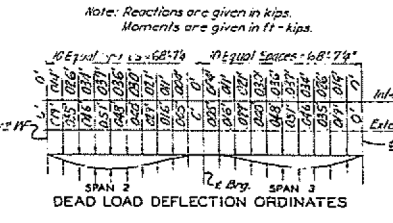


TABLE OF ELEVATIONS

BEAM	POINT				
	A	D	C	D	E
B1	622.14	622.39	622.40	622.41	622.18
B2	622.25	622.50	622.50	622.51	622.27
B3	622.30	622.55	622.55	622.55	622.30
B4	622.27	622.51	622.50	622.50	622.25
B5	622.18	622.41	622.40	622.39	622.14

F.A. RTE. NO.	SECTION	COUNTY	TOTAL SHEETS	SHEET NO.
70	2433	Effingham	146	61
FED. ROAD DIST. NO.		ILLINOIS	FED. AID PROJ. NO.	

NOTES
 All rivets are 3/4" unless otherwise noted.
 All cover plates and splice plates shall be universal mill plates.
 All longitudinal dimensions shown are horizontal and are measured at top of W.

ROCHESTER AND GODSELL
 ENGINEERS INCORPORATED
 SALEM, ILLINOIS

EVERBRUP AND PARCEL, INC.
 ENGINEERS-ARCHITECTS
 ST. LOUIS, MISSOURI

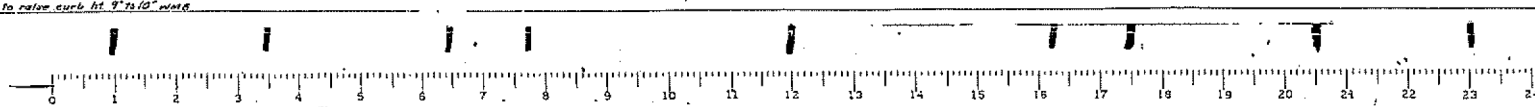
BRIDGE OVER - F.A. 1-70 CARRYING S. A. ROUTE 13

STATION - 2633+55.55
 F.A. 1-70
 SECTION - 25-SH8-2.4.3
 EFFINGHAM COUNTY, ILLINOIS

DRAWN: K.P. Foust
 TRACED: M. G. Mearns
 CHECKED: M. G. Mearns
 APPROVED: M. G. Mearns

DATE: Aug 1968
 DATE: Sept 1968
 DATE: Sept 1968

SCALE: NONE



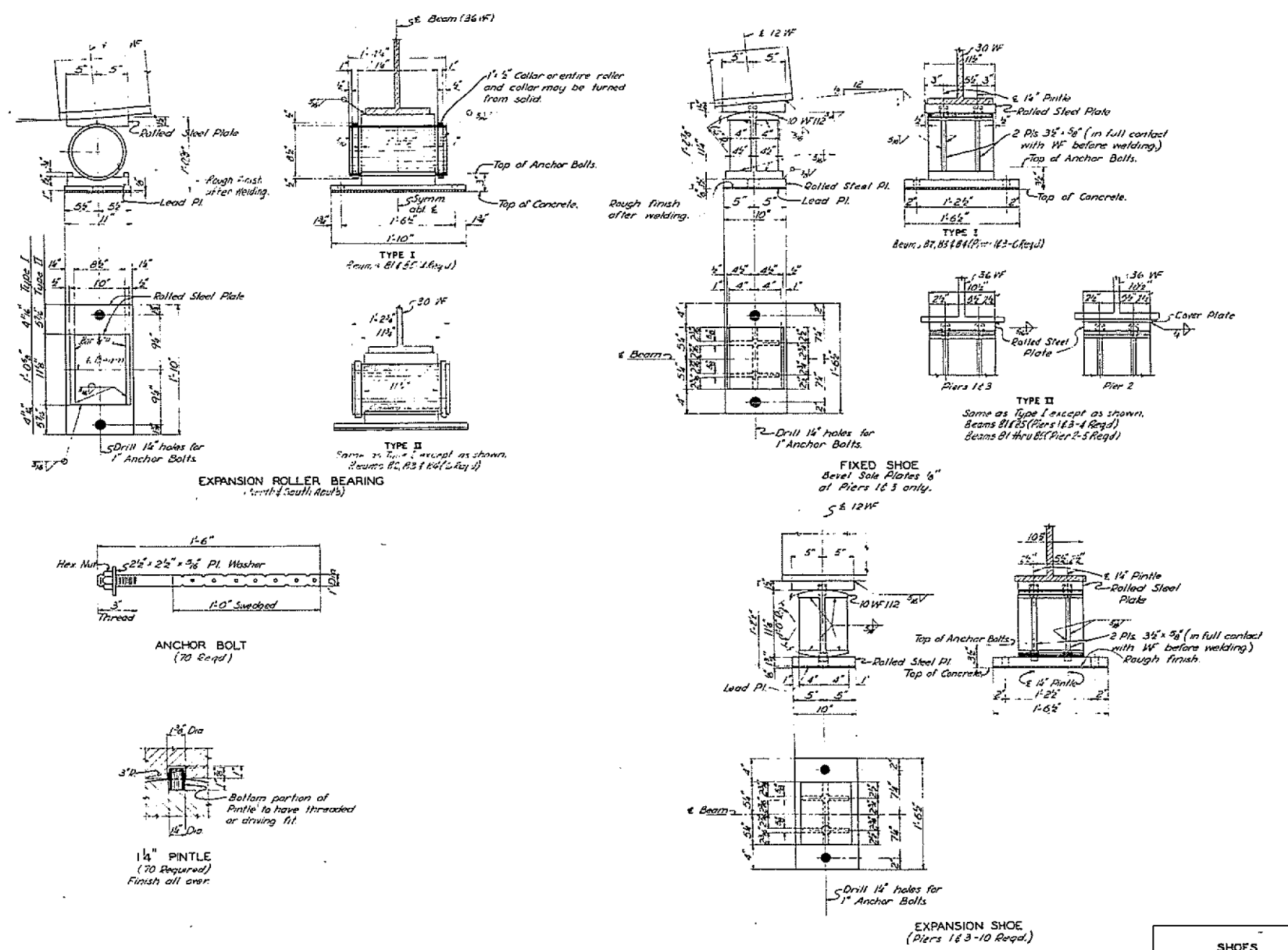
FOR INFORMATION ONLY

USER NAME = steffenk	DESIGNED -	REVISED -	STATE OF ILLINOIS DEPARTMENT OF TRANSPORTATION	EXISTING PLAN STRUCTURE 025-0052		F.A. RTE.	SECTION	COUNTY	TOTAL SHEETS	SHEET NO.
PLOT SCALE = 100,0000' / in.	DRAWN -	REVISED -		SCALE: N/A	SHEET 7	OF 22 SHEETS	STA.	TO STA.	ILLINOIS	FED. AID PROJECT
PLOT DATE = 8/21/2019	CHECKED -	REVISED -		TO STA.		CONTRACT NO. 74926				

MODEL: Default
 FILE: \\blm001\pub\pubroom\da\illinois\pww\DOT\Documents\DOT - Offices\Illinet 7\Projects\74926\CADD\Drawings\74926-shd-sheet6.dwg
 PROJECT: 74926\CADD\Drawings\74926-shd-sheet6.dwg

* VARIOUS
 ** D7 BRIDGE PAINTING 2020-1
 *** EFFINGHAM & FAYETTE

F.A. #	SECTION	COUNTY	TOWN	SHEET NO.
70	EFFINGHAM	Effingham	66	82
FED. ROAD DIST. NO. 7 ILLINOIS FED. AID PROJECT				



NOTES
 Finish all surfaces marked S.
 All metal shown on this sheet shall be paid for as "Remanaged and Erecting Structural Steel".

ROCHESTER AND GOBELL ENGINEERS INCORPORATED SALEM, ILLINOIS		EVERDUP AND PARCEL, INC. ENGINEERS-ARCHITECTS ST. LOUIS, MISSOURI	
BRIDGE OVER - F.A. 1-70 CARRYING S.A. ROUTE 13			
STATION - 2633+55.55			
F.A. 1. ROUTE - 70			
SECTION - 25-6+8-2 X 3			
EFFINGHAM COUNTY, ILLINOIS			
DRAWN R. P. ROY	DATE Aug. 1998	SCALE:	NONE
TRACED J. M. GILL	DATE 10/1/98		
CHECKED J. M. GILL	DATE		
APPROVED	DATE		



Note: Do not scale this drawing. Follow dimensions.

FOR INFORMATION ONLY

MODEL: Default
 FILE: A:\hisp\pmaplanroom.dwg
 PROJECT: 70925\GADD\data\CADD\hisp\DOT-Office\I-D\70925-98-08-11.dwg
 DATE: 8/21/2019 4:18:11 PM

USER NAME = stefenmk	DESIGNED -	REVISED -
DRAWN -	REVISED -	
PLOT SCALE = 100,0000' / in.	CHECKED -	REVISED -
PLOT DATE = 8/21/2019	DATE -	REVISED -

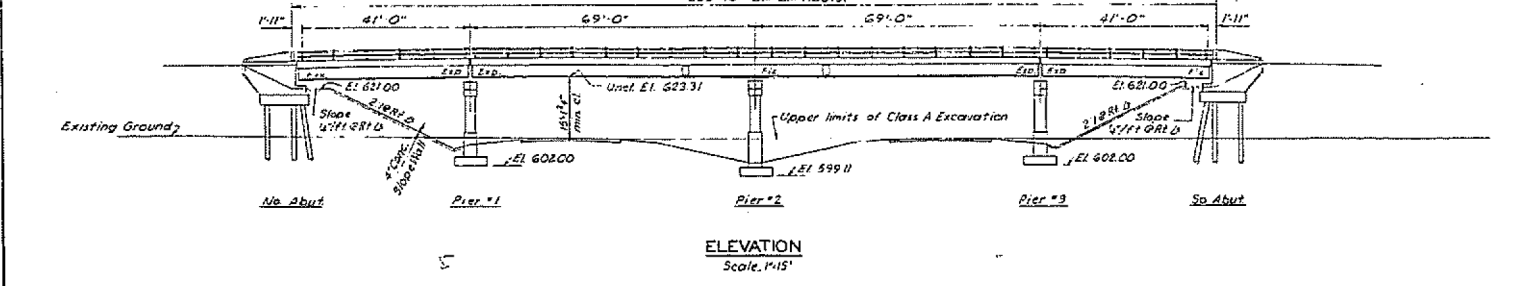
STATE OF ILLINOIS
DEPARTMENT OF TRANSPORTATION

EXISTING PLAN
STRUCTURE 025-0052
 SCALE: N/A SHEET 8 OF 22 SHEETS STA. TO STA.

F.A. #	SECTION	COUNTY	TOTAL SHEETS	SHEET NO.
**	**	***	27	13
CONTRACT NO. 74926				
ILLINOIS FED. AID PROJECT				

* VARIOUS
 ** D7 BRIDGE PAINTING 2020-1
 *** EFFINGHAM & FAYETTE

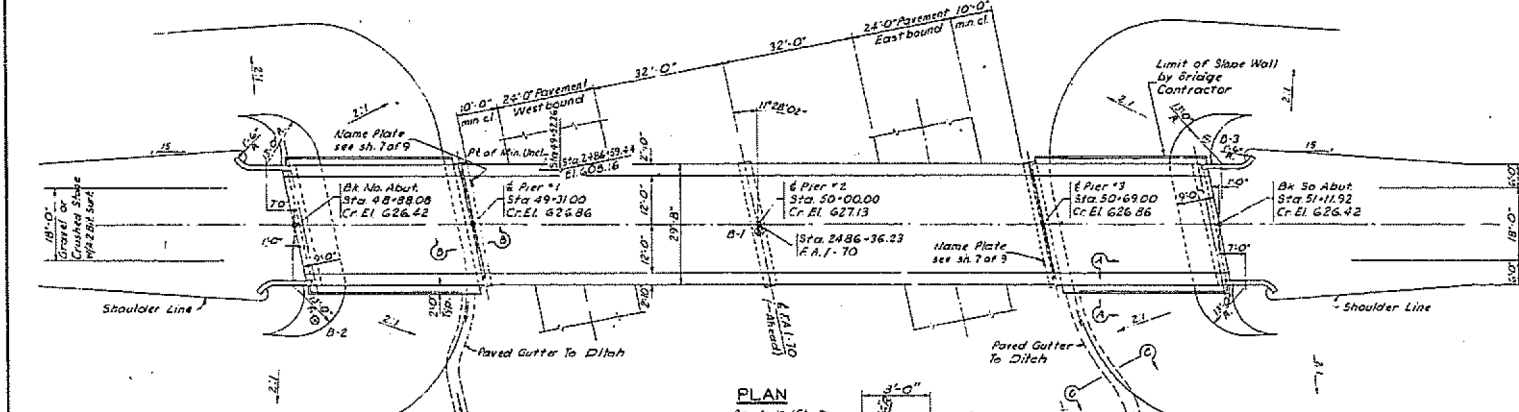
DATE	BY	REVISION
12/20	EF	EFFINGHAM



ELEVATION
Scale 1"=15'

GENERAL NOTES

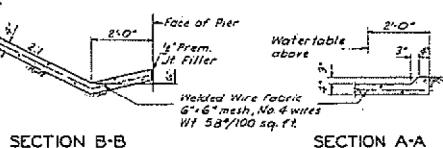
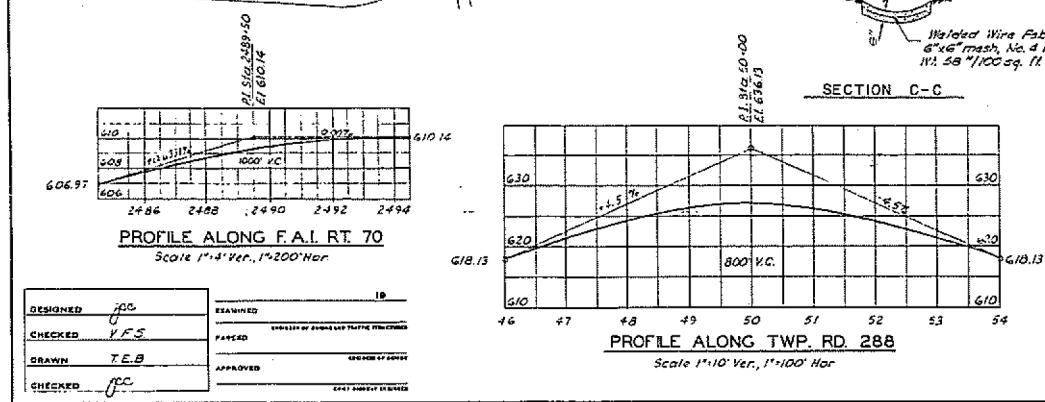
Class X Concrete shall be used throughout except in handrail end posts.
Handrail Concrete shall be used in the handrail end posts.
The concrete floor slab shall be finished in accordance with Sec. 51.15 of the Standard Specifications, and shall be poured in one continuous operation between construction joints.
Recess 3/4" x Open holes 1 1/2" x, unless noted.
Field connections riveted, unless noted.
All holes for splices shall be punched 1/16" x and reamed to proper size (1 1/2" x in web and 1 1/4" x in flange) with all spacers assembled in the shop in proper position. Leave assembled in shop for inspection.
All nuts, washers, bearing plates, fill plates, top plates, gaskets, and anchor bolts shall be fabricated and set in accordance with Sec. 51.15 of the Standard Specifications, and are included in the quantity of Structural Steel.
Anchor bolts shall be set before riveting diaphragms over supports.
Except as otherwise provided, all Structural Steel shall receive one (1) shop coat of red lead paint and two (2) field coats of aluminum paint. See Sec. 56.1 through 56.3 inclusive, of the Standard Specifications.
Isler for the concrete piers at each abutment shall be accored in accordance with Sec. 60.1(c) of the Standard Specifications.
The Contractor shall drive two concrete test piles in permanent locations as directed by the engineer before ordering or casting the remainder of the piers.



PLAN
Scale 1"=15'

TOTAL BILL OF MATERIAL

ITEM	SUPER	SUB	TOTAL
Class X Concrete	Cu Yds 1701	2212	4113
Handrail Concrete	Cu Yds 29	-	29
Reinforcement Bars	Lbs 31,270	12,600	43,870
Furnishing & Erecting Structural Steel	Lbs 154,910	-	154,910
Metal Handrail	Lm Ft 423	-	423
Name Plates	EA -	2	2
Concrete Piles	Lm Ft -	480	480
Test Piles (Concrete)	EA -	2	2
Slope Wall	Sq Yds -	314	314
Class A Excavation for Structures	Cu Yds -	280	280
Concrete Gutter, Special	Lm Ft -	70	70



SECTION C-C
SECTION B-B

STATION 2486+36.23
BUILT 19 BY
STATE OF ILLINOIS
F.A.I. RT. 70 SEC. 25-5HB-1
F.A. PROJ. 1-70-3(M)
LOADING H15-S12

DESIGN STRESSES
F = 1,100 psi
F_c = 20,000 psi (Reinf)
F_c = 18,000 psi (Struct)
v = 75 psi (Footings)
n = 10
Design Footing Pressure for Piers
Av = 1.8 ton/sq ft
Max = 20 ton/sq ft
Loading H15-S12-24
with 20% future W.S.

ROCHESTER AND GODDELL ENGINEERS INCORPORATED
SALEM, ILLINOIS
HARRISON, COLLINS AND RICE CONSULTING ENGINEERS
SPRINGFIELD, ILLINOIS
GENERAL PLAN & ELEVATION
TWP. RD. 288 OVER FED AID INTERSTATE
F.A. PROJECT
F.A.I. ROUTE 70 SECTION 25-5HB-1
EFFINGHAM COUNTY
STATION 2486+36.23

DESIGNED	J.S.	EXAMINED	IB
CHECKED	V.E.S.	PAVED	DESIGNER OF BRIDGE AND TRAFFIC PROBLEMS
DRAWN	T.E.B.	APPROVED	CHIEF OF BUREAU
CHECKED	J.C.	APPROVED	SEAL

FOR INFORMATION ONLY

STATE OF ILLINOIS
DEPARTMENT OF TRANSPORTATION

EXISTING PLAN
STRUCTURE 025-0064

SCALE: N/A SHEET 9 OF 22 SHEETS STA. TO STA.

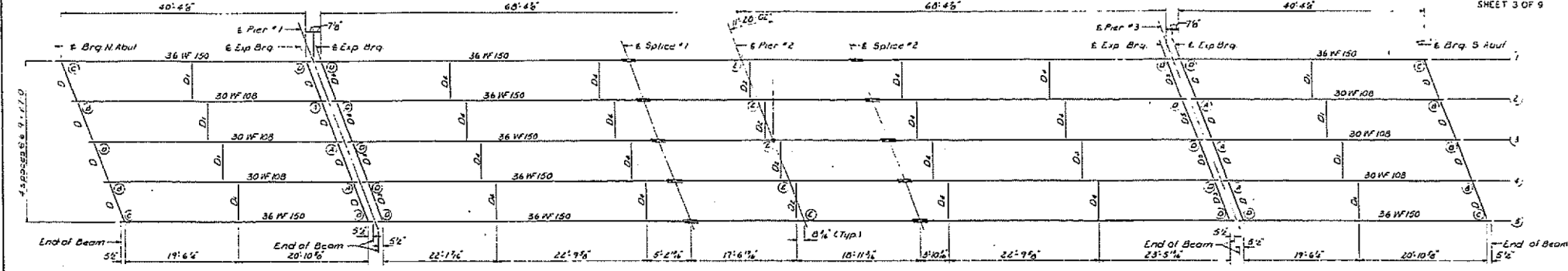
* VARIOUS
** D7 BRIDGE PAINTING 2020-1
*** EFFINGHAM & FAYETTE

USER NAME = stefenmk	DESIGNED -	REVISED -	STATE OF ILLINOIS DEPARTMENT OF TRANSPORTATION	EXISTING PLAN STRUCTURE 025-0064	F.A. RTE. -	SECTION -	COUNTY -	TOTAL SHEETS -	SHEET NO. -
PLOT SCALE = 100,000' / in.	CHECKED -	REVISED -		SCALE: N/A	SHEET 9	*	**	OF 22 SHEETS	27
PLOT DATE = 8/21/2019	DATE -	REVISED -		TO STA.	TO STA.	EFFINGHAM	FED. AID PROJECT		14

STATE OF ILLINOIS
DEPARTMENT OF PUBLIC WORKS & BUILDINGS
DIVISION OF HIGHWAYS

PROJECT NO.	SEC.	COUNTY	TOTAL SHEETS	SHEET NO.
142	70	Effingham	42	20

DATE PLOTTED: 8/21/2019
SHEET 3 OF 9



Note:
Encircled letters indicate bearing to be used. See Sheet # of 9 for details of the bearings.

PLAN OF STRUCTURAL STEEL

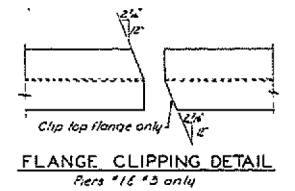
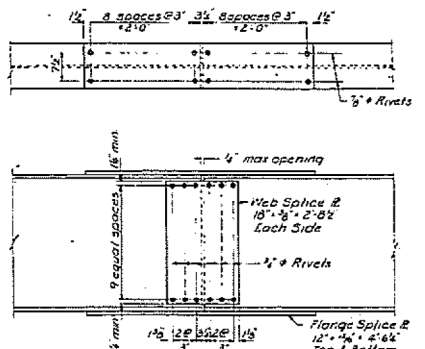
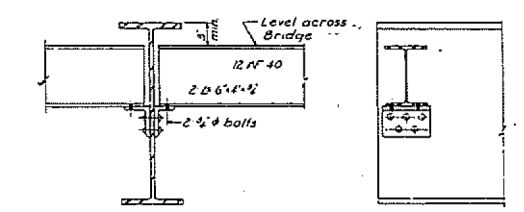
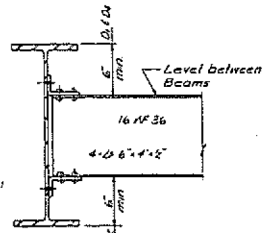


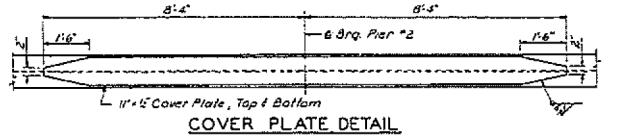
TABLE OF ELEVATIONS

PI	Br No	1	2	3	4	5
6 Brq. N. Abut	625 67	625 81	625 87	625 85	625 76	625 76
6 Exp. Brq. Pier #1	626 11	626 24	626 27	626 25	626 16	626 16
6 Exp. Brq. Pier #1	626 11	626 24	626 27	626 25	626 16	626 16
6 Splice #1	626 33	626 22	626 40	626 45	626 34	626 34
6 Brq. Pier #2	626 34	626 22	626 40	626 45	626 34	626 34
6 Splice #2	626 34	626 22	626 40	626 45	626 34	626 34
6 Exp. Brq. Pier #3	626 16	626 24	626 27	626 25	626 16	626 16
6 Exp. Brq. Pier #3	626 16	626 24	626 27	626 25	626 16	626 16
6 Brq. S. Abut	625 76	625 85	625 87	625 85	625 67	625 67

Note: All elevations shown are given at the top of the flanges of the beams.



DESIGNED	gnc	REVISIONS	
CHECKED	VFS	PASSED	DESIGNED BY STATE ENGINEER
DRAWN	DJM	APPROVED	BY STATE ENGINEER
CHECKED	T.E.B.	BY STATE ENGINEER	



Note: The Structural Steel for all cover plates and the WF sections to which they are welded shall conform to the Specifications for Steel for Bridges and Buildings, A.S.T.M. Designation: A-36. All other Structural Steel, may conform to A.S.T.M. Designation: A-7.

STRUCTURAL STEEL
TWP. RD. 288 OVER FED. AID INTERSTATE
F.A. PROJECT
F.A.I. ROUTE 70 SECTION 25-5HB-1
EFFINGHAM COUNTY
STATION 2486+36.23



FOR INFORMATION ONLY

MODEL: Default
FILE: \\pww\pwwroom\da\illinois.gov\pww\DOT\Documents\DOT - Office\District 7\Projects\74926\CADD\Sheet\74926-Struct\Illinois.dwg

USER NAME = steffemk	DESIGNED -	REVISED -
	DRAWN -	REVISED -
PLOT SCALE = 100,0000' / in.	CHECKED -	REVISED -
PLOT DATE = 8/21/2019	DATE -	REVISED -

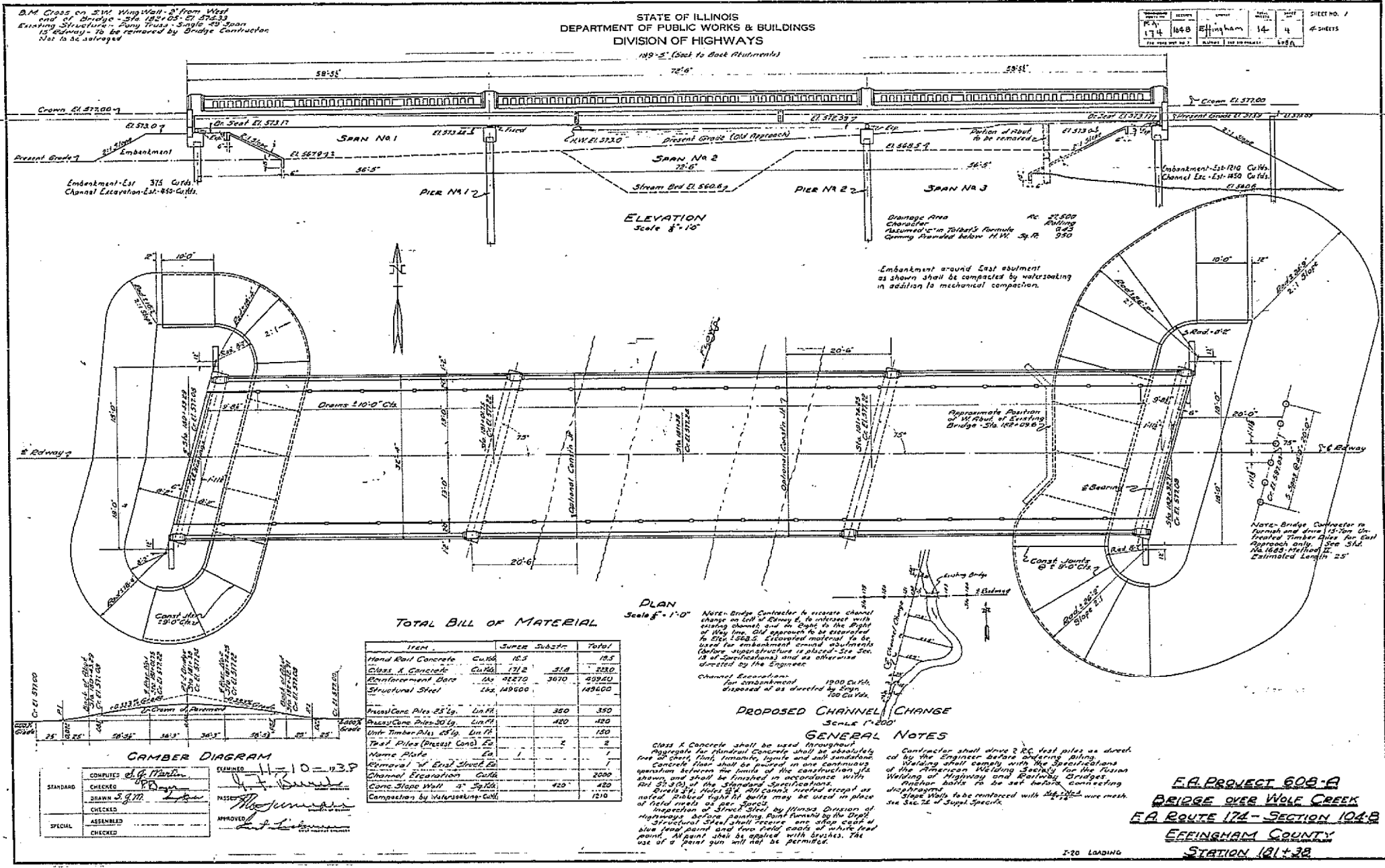
STATE OF ILLINOIS
DEPARTMENT OF TRANSPORTATION

EXISTING PLAN
STRUCTURE 025-0064

SCALE: N/A SHEET 10 OF 22 SHEETS STA. TO STA.

* VARIOUS
** D7 BRIDGE PAINTING 2020-1
*** EFFINGHAM & FAYETTE

F.A. RTE.	SECTION	COUNTY	TOTAL SHEETS	SHEET NO.
*	**	***	27	15
				CONTRACT NO. 74926
ILLINOIS		FED. AID PROJECT		



FOR INFORMATION ONLY

USER NAME = stefenmk	DESIGNED -	REVISED -
PLOT SCALE = 100,000' / in.	DRAWN -	REVISED -
PLOT DATE = 8/21/2019	CHECKED -	REVISED -
	DATE -	REVISED -

STATE OF ILLINOIS
DEPARTMENT OF TRANSPORTATION

SCALE: N/A	SHEET 11	OF 22 SHEETS	STA.	TO STA.
EXISTING PLAN STRUCTURE 025-0030				

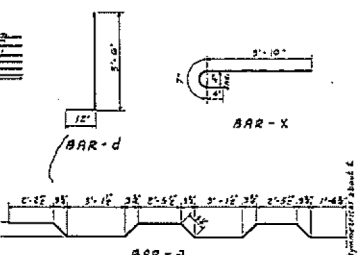
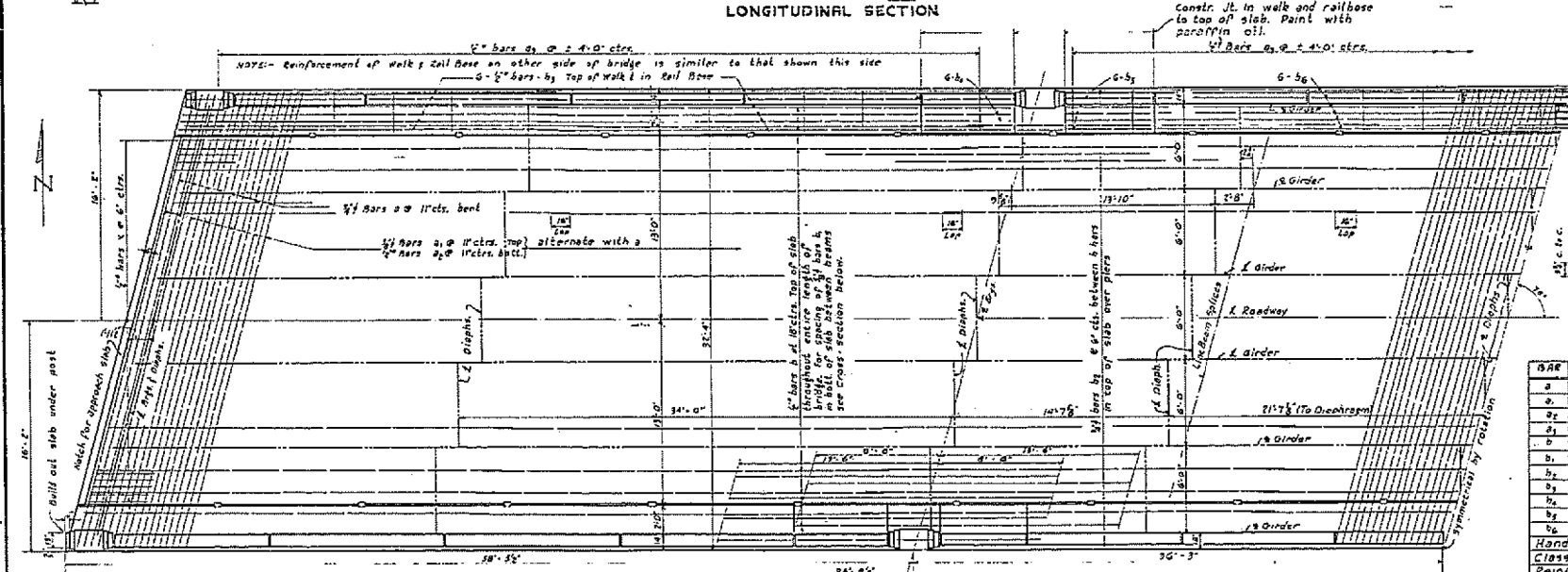
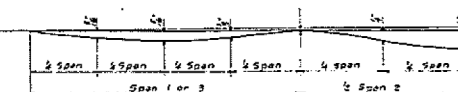
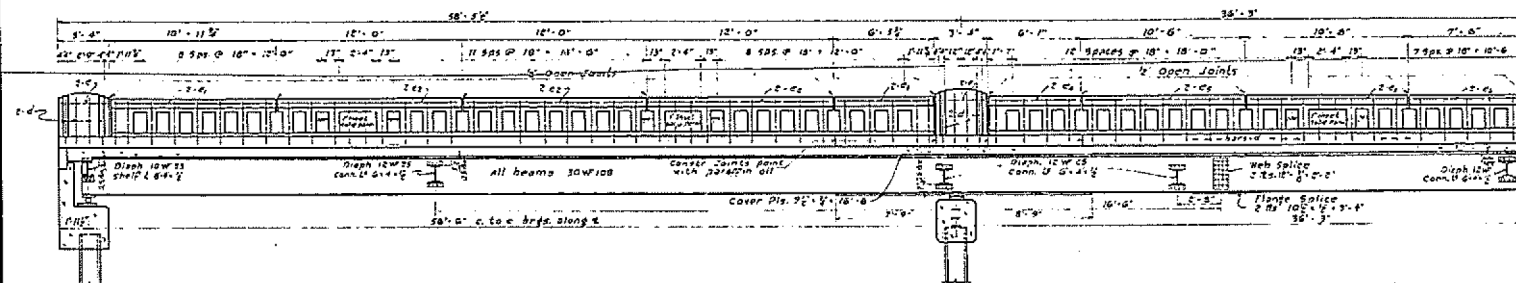
F.A. RTE.	SECTION	COUNTY	TOTAL SHEETS	SHEET NO.
*	**	***	27	16
CONTRACT NO. 74926				
ILLINOIS FED. AID PROJECT				

MODEL: Default
FILE: 14926_Plan.dwg
PROJECT: 74926-CADD\DATA\Documents\DOT - Office\Drawings\74926-Plan.dwg

MODEL: Default
 FILE: \\p01naroom.dta\illinois\p01naroom\Documents\DOT Office\Drawings\7925\CAAD\Drawings\7925-Struct\11.dwg

STATE OF ILLINOIS
 DEPARTMENT OF PUBLIC WORKS & BUILDINGS
 DIVISION OF HIGHWAYS

PROJECT NO.	104-B	SECTION	14	5	SHEET NO. 2
TOTAL SHEETS	4 SHEETS				

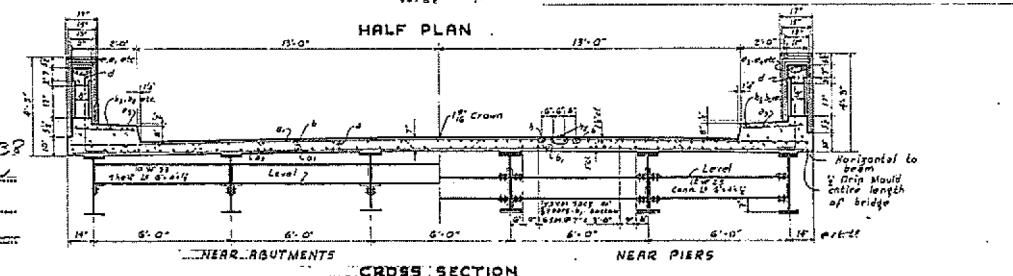


BILL OF MATERIAL

BAR NO.	SIZE	LENGTH	BAR NO.	SIZE	LENGTH
a	1/2"	34'-3"	d	3/4"	4'-0"
b	1/2"	33'-0"	e	1/2"	3'-0"
g	1/2"	33'-0"	f	0	10'-0"
h	1/2"	21'-0"	g	3/4"	17'-5"
i	1/2"	28'-0"	h	5/8"	6'-0"
j	3/8"	28'-0"	i	8	2'-0"
k	3/8"	22'-0"	j	1/2"	10'-0"
l	3/8"	26'-0"	k	8	7'-0"
m	3/8"	26'-0"	l	104	4'-9"
n	3/8"	29'-0"	m	24	2'-0"
o	3/8"	29'-0"	n	24	2'-0"

Handrail concrete CU Yds. 18.5
 Class X concrete CU Yds. 171.2
 Reinforcement Bars Lbs. 42730
 Structural Steel LBS 149500
 Name Plate 100A 1

STANDARD	COMPUTED	8 G. Martin	REVISIONS	11-10-138
	CHECKED	3 D. Martin		
	DRAWN	3 G. M.		
SPECIAL	CHECKED			
	ASSEMBLED			
	CHECKED			



F.A. PROJECT 608-A
 BRIDGE OVER WOLF CREEK
 F.A. ROUTE 174-SECTION 104-B
 EFFINGHAM COUNTY
 STATION 181 + 38

FOR INFORMATION ONLY

USER NAME = steffenk	DESIGNED -	REVISED -
PLOT SCALE = 100,0000' / in.	DRAWN -	REVISED -
PLOT DATE = 8/21/2019	CHECKED -	REVISED -
	DATE -	REVISED -

STATE OF ILLINOIS
 DEPARTMENT OF TRANSPORTATION

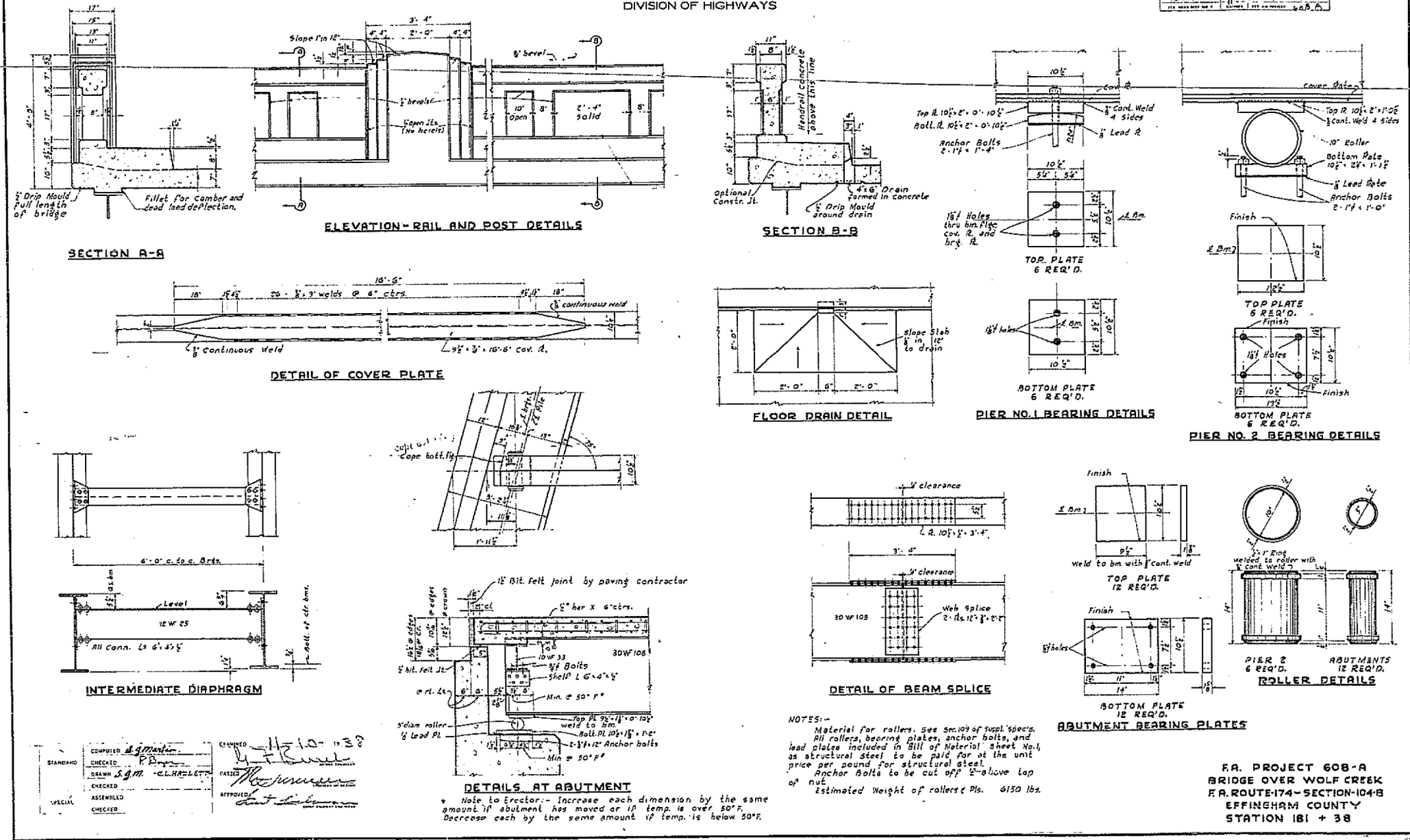
EXISTING PLAN	SCALE: N/A	SHEET 12	OF 22 SHEETS	STA.	TO STA.
STRUCTURE 025-0030					

* VARIOUS
 ** D7 BRIDGE PAINTING 2020-1
 *** EFFINGHAM & FAYETTE

F.A. RTE.	SECTION	COUNTY	TOTAL SHEETS	SHEET NO.
*	**	***	27	17
CONTRACT NO. 74926				
ILLINOIS FED. AID PROJECT				

STATE OF ILLINOIS
DEPARTMENT OF PUBLIC WORKS & BUILDINGS
DIVISION OF HIGHWAYS

PROJECT NO.	104-B	SHEET NO.	13	TOTAL SHEETS	22
DATE	8/21/2019	SCALE	N/A	PROJECT	F.A. PROJECT 608-A



FOR INFORMATION ONLY

MODEL: Default
FILE: \\blm\p\pub\barcom\da\illink\poc\PI\DOT\Documents\DOT_Offices\Dir\et 7\Project\174926\CADD\barcom\CADD\sheet\174926-shc-draw-ill.dgn

USER NAME = steffenk	DESIGNED -	REVISED -
	DRAWN -	REVISED -
PLOT SCALE = 100,0000' / in.	CHECKED -	REVISED -
PLOT DATE = 8/21/2019	DATE -	REVISED -

STATE OF ILLINOIS
DEPARTMENT OF TRANSPORTATION

EXISTING PLAN
STRUCTURE 025-0030

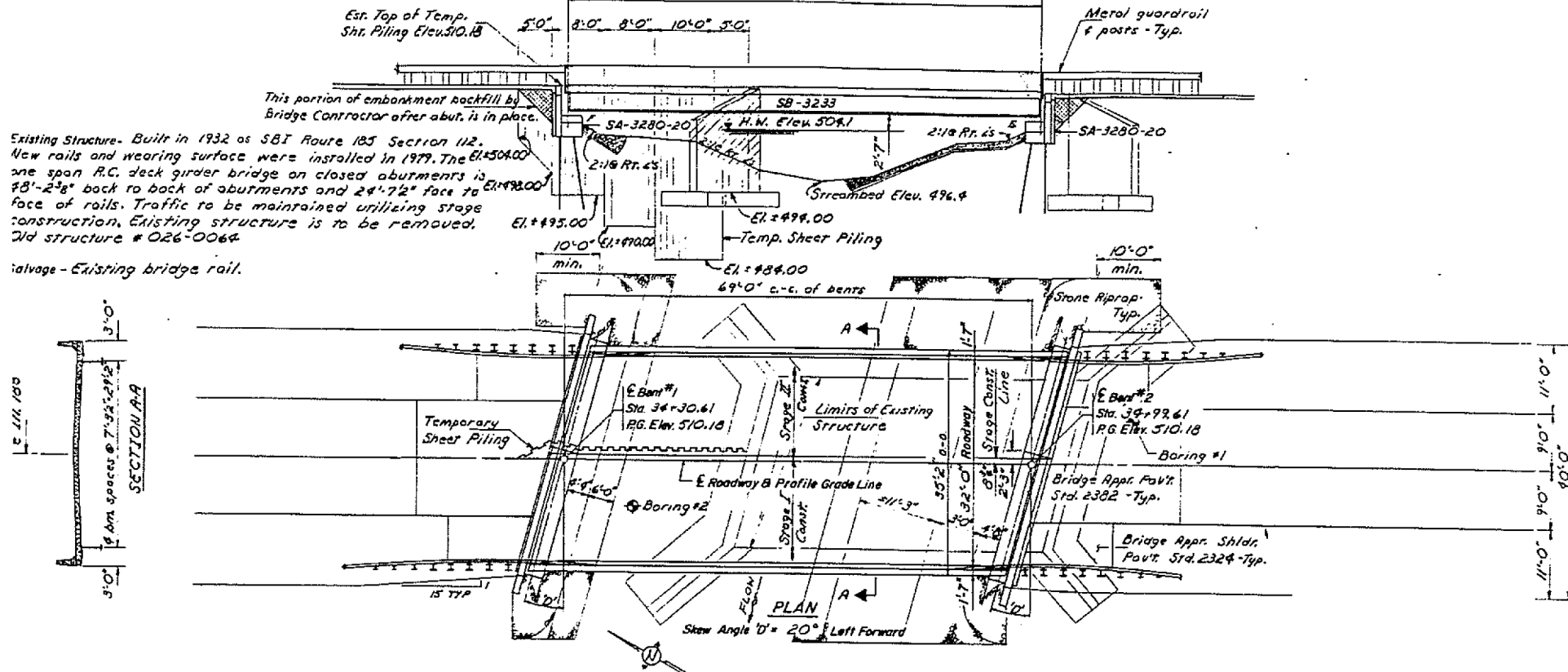
SCALE: N/A	SHEET 13	OF 22 SHEETS	STA.	TO STA.
------------	----------	--------------	------	---------

* VARIOUS
** D7 BRIDGE PAINTING 2020-1
*** EFFINGHAM & FAYETTE

F.A. RTE.	SECTION	COUNTY	TOTAL SHEETS	SHEET NO.
*	**	***	27	18
CONTRACT NO. 74926				
ILLINOIS FED. AID PROJECT				

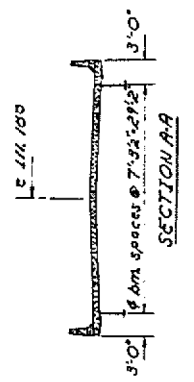
B.M.-Chiseled 'a' on N.W. wing of existing bridge over Sandy Run Elev 509.73

ROUTE NO.	REF.	COUNTY	TOTAL SHEETS	SHEET NO.	SHEET NO. 1
750	112BR	FAYETTE	16	6	11 SHEETS



Existing Structure- Built in 1932 as SBI Route 185 Section 112. New rails and wearing surface were installed in 1979. The existing 18'-2 3/8" back to back of abutments and 24'-7 1/2" face to face of rails. Traffic to be maintained utilizing stage construction. Existing structure is to be removed. Old structure # 026-0064.

Salvage - Existing bridge rail.



BEARING CAP ELEVATION DATA

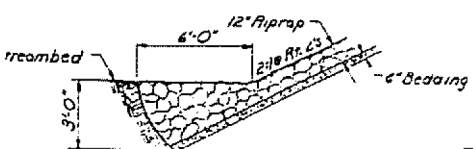
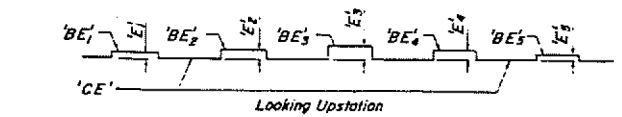
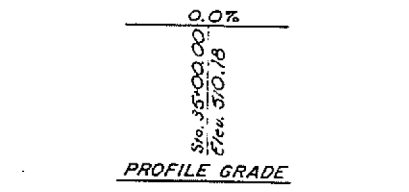
Bent	'CE'	Bm. #1	Bm. #2	Bm. #3	Bm. #4	Bm. #5
'1'	506.18	506.31	506.42	506.51	506.58	506.61
'2'	505.94	506.06	506.12	506.21	506.28	506.31

WATERWAY INFORMATION

Flood	Freq. Yr.	C.F.S.	Opening Sq. Ft.		Natural H.W.E.		Head-Ft.		Headwater El.	
			Exist.	Prop.	Exist.	Prop.	Exist.	Prop.		
Design	50	2203	180	222	504.1	2.93	2.14	507.03	506.24	
Base	100	2527	188	232	504.3	2.87	2.30	507.17	506.80	
Overlapping										
Max. Calc.	500	3276		254	504.7		2.34		507.04	

PILE DATA

Bent	#1	#2
Type	Conc.	HP10@2
Capacity - Ton	45	45
Estimated Length - Feet	40	39
Number Required	8	9
Test Piles	1	-



STATION 34+65.11
SANDY RUN
BUILT 198
ILLINOIS RTE. 185 SEC. 112BR
F.A. PROJ. BR-750(2)
LOADING HS20
STR NO 026-0091

DESIGN SPECIFICATIONS
1977 AASHTO & 1978, 1979 & 1980 Interims
HS 20 - 44 Loading. Load Factor Design

CALCULATED WEIGHT OF STRUCTURAL STEEL

Standard SB 3233	48,644	lbs
Standard SD 3201	2,480	lbs
Standard SD 3202	1,025	lbs
Total	52,149	lbs

- INDEX OF SHEETS**
1. General Plan & Elevation
 2. Standard SS-3270-L
 3. Standard SB-3233
 4. Standard SA-3280-20
 5. Standard SD-3201
 6. Standard SD-3202
 7. Standard SA-1
 8. Bar Splicer Details
 9. Anchor Bolt Details
 10. Temp. Conc. Barrier
 11. Temp. Bridge Rail
- ** All rebars in the deck Str. SS-3270-L are epoxy coated
*** See sheet #9 for anchor bolt details.

TOTAL BILL OF MATERIAL

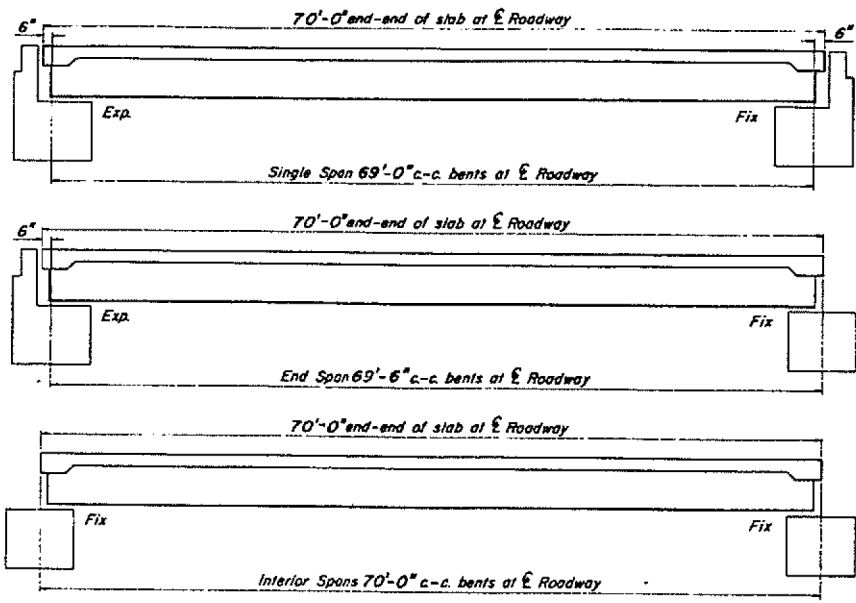
Item	Unit	Super	Sub.	Total
Removal of Existing Structures	Each			1
Structure Excavation	Cu Yd		49.5	49.5
Floor Drains	Each	6		6
Protective Coat	Sq. Yd.	307.2		307.2
Class X Concrete	Cu. Yd.	74.6	58.4	133.0
Preformed Joint Seal 4"	Lin. Ft.	74		74
F.B.E. Street Steel	L. Sum.			
Stud Shear Connectors	Each	930		930
Elast. Bearing Assy. T1	Each		5	5
Reinforcement Bars	Lbs	7570	4940	12,510
Rein. Bars (Epoxy Ctd.)	Lbs.	10,390		10,390
Concrete Piles	Lin. Ft.		320	320
Steel H-Piles (HP10@2)	Lin. Ft.		357	357
Test Pile (concrete)	Each		1	1
Stone Riprap	Sq. Yd.		280	280
Name Plates	Each	1		1
Temporary Shear Piling	Sq. Ft.		672	672
Bridge Handrail Removal	Lin. Ft.	125		125
Temporary Bridge Rail	Lin. Ft.	122		122

STANDARD BRIDGE
STEEL BEAMS 32" ROADWAY
GENERAL PLAN & ELEVATION
ILLINOIS ROUTE 185
OVER SANDY RUN CREEK
RT. F.A. 750 SEC. 112BR
FAYETTE COUNTY
STATION 34+65.11

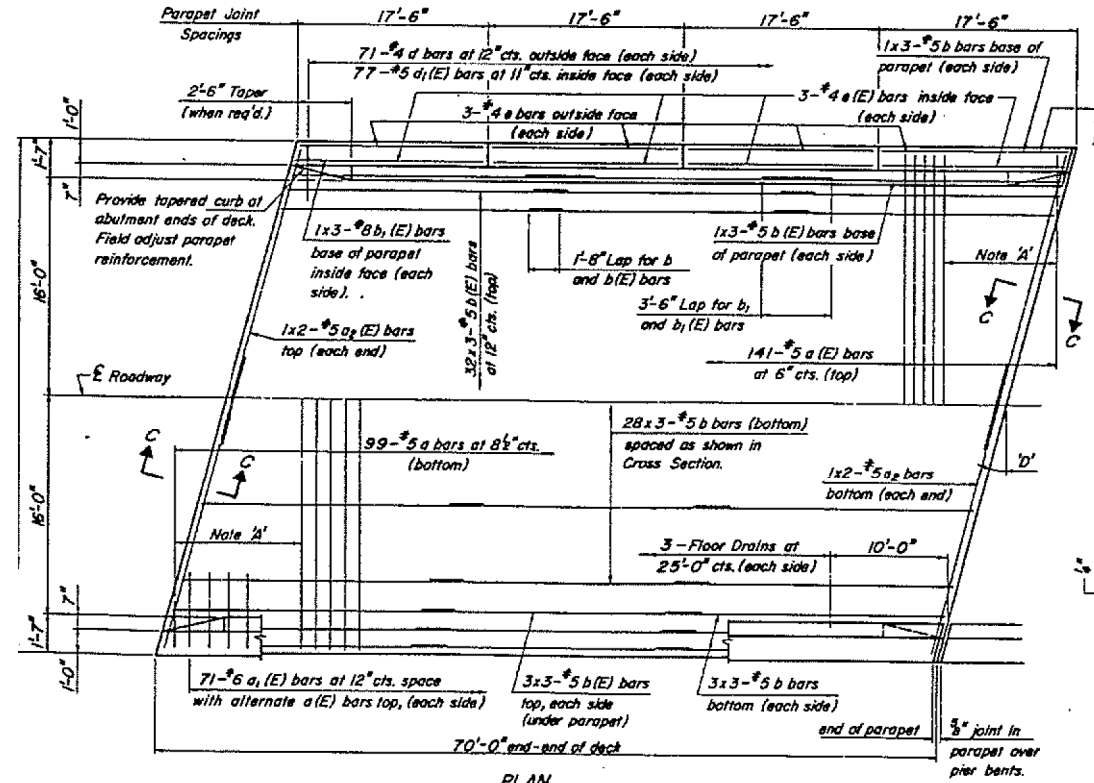
SGP-IL (7-1-B1)
Illinois Department of Transportation
AK BRT
WG DJR
VT-11-03
Rev. 2-15-88
Rev. 7-22-88
October 1, 1984
APPROVED: [Signature]
Engineer of Structures

LETTERING FOR NAME PLATE
Locate Name Plate at Northeast Corner of Bridge (See Standard 2113)

FOR INFORMATION ONLY



TYPICAL ELEVATIONS

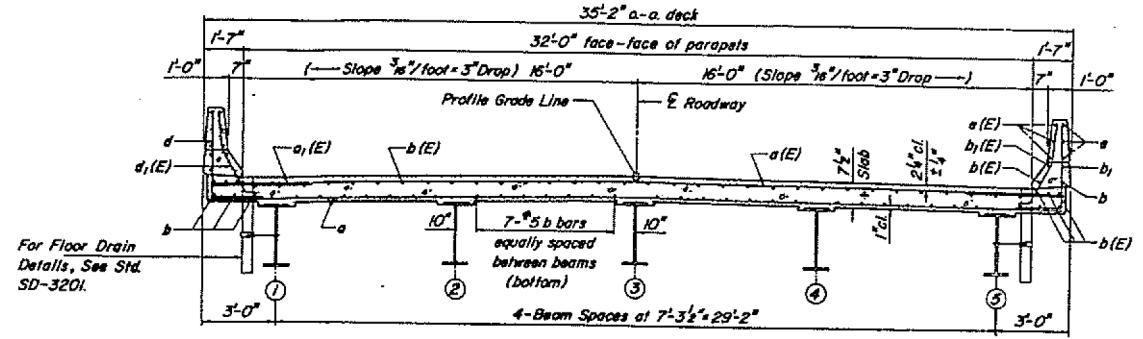


PLAN
(D=Designated Skew Angle)

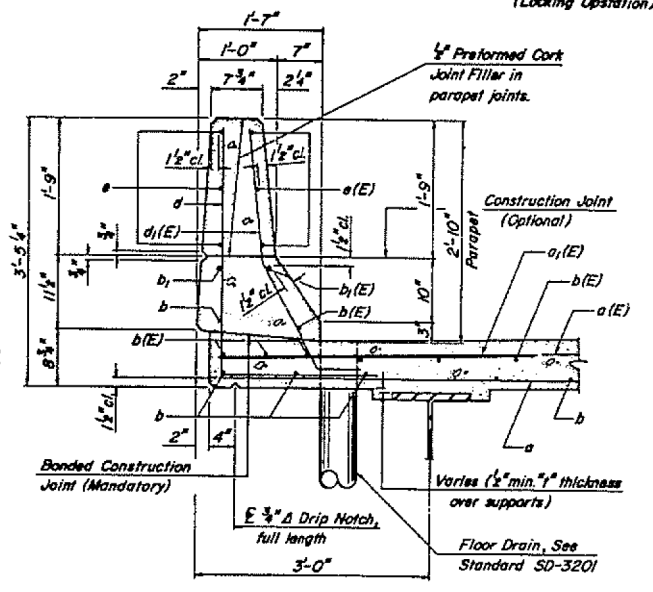
Illinois Department of Transportation
 APPROVED JULY 1, 1991.
 Engineer of Design
 APPROVED JULY 1, 1991.
 Engineer of Design

Bars indicated thus;
 28x3-#5 etc. indicates
 26 lines of bars with 3
 lengths per line.

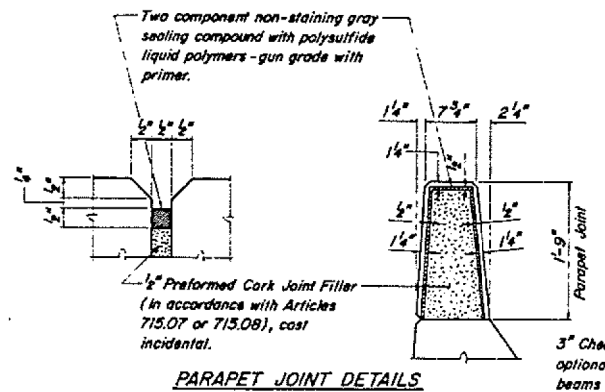
Note A:
 Field cut a and a(E) bars to fit
 skew and use remainder of bars
 in opposite end. See Special
 Provisions for treatment of field
 cut epoxy coated bars.



CROSS SECTION
(Looking Upstation)

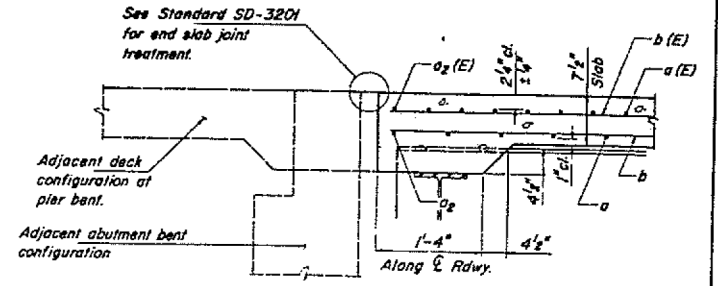


PARAPET SECTION



PARAPET JOINT DETAILS

METHOD FOR DETERMINING FILLET HEIGHT "y"
 After all structural steel has been erected, elevations of the top flanges of each
 beam shall be taken at intervals not to exceed 10 feet. From these elevations,
 subtract the increment of deflection for those points determined from the "Dead
 Load Deflection Diagram". The elevation so obtained subtracted from the
 theoretical top of slab elevations over each beam minus the slab thickness equals
 the fillet height "y" above the top of the beam.



SECTION C-C

BAR LIST FOR ONE SPAN

Bar	No.	Size	Length	Shape
a	99	#5	34'-7"	
a(E)	141	#5	34'-7"	
a ₁ (E)	142	#6	4'-0"	
a ₂	4	#5	20'-8"	
a ₂ (E)	4	#5	20'-8"	
b	108	#5	24'-4"	
b(E)	120	#5	24'-4"	
b ₁	6	#8	25'-7"	
b ₁ (E)	6	#8	25'-7"	
d	142	#4	5'-2"	
d ₁ (E)	154	#5	3'-11"	
e	24	#4	17'-2"	
e(E)	24	#4	17'-2"	

Reinforcement bars designated (E) shall be epoxy coated. See Special Provisions.

QUANTITIES FOR ONE SPAN

Class X Concrete	76.4	Cu. Yds.
Reinforcement Bars	7570	Lbs.
Rein. Bars (Epoxy Coated)	10390	Lbs.
Floor Drains	6	Each
Protective Coat	307.2	Sq. Yds.

DESIGN STRESSES

f_c = 3,500 psi
 f_y = 60,000 psi

STEEL BEAM BRIDGES
SUPERSTRUCTURE

32' RDWY.	70' SPAN	LEFT
STANDARD SS-3270-L		

FOR INFORMATION ONLY

MODEL: Default
 FILE: \\ibm02\pub\baronam.dwg
 PROJECT: 74926
 OFFICE: DISTRICT 7
 PROJECT: 74926
 CADD: DATA
 CADD: SHEET: D74926-SS-3270-L.dwg

USER NAME = steffemk	DESIGNED -	REVISED -
DRAWN -	REVISED -	REVISED -
PLOT SCALE = 100,0000' / in.	CHECKED -	REVISED -
PLOT DATE = 8/21/2019	DATE -	REVISED -

STATE OF ILLINOIS
DEPARTMENT OF TRANSPORTATION

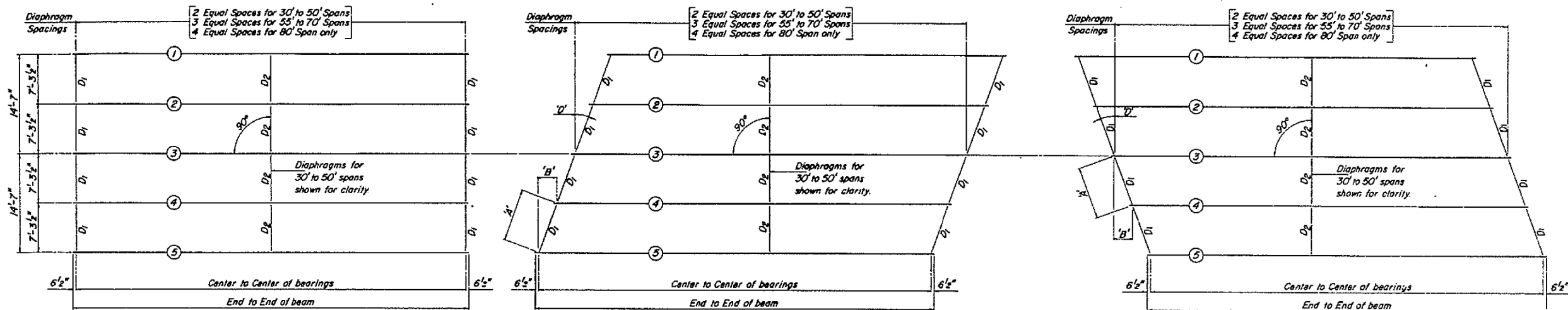
EXISTING PLAN
STRUCTURE 026-0091

SCALE: N/A SHEET 15 OF 22 SHEETS STA. TO STA.

F.A. RTE.	SECTION	COUNTY	TOTAL SHEETS	SHEET NO.
*	**	***	27	20
CONTRACT NO. 74926				
ILLINOIS FED. AID PROJECT				

* VARIOUS
 ** D7 BRIDGE PAINTING 2020-1
 *** EFFINGHAM & FAYETTE

Span	Beam Size	Values for 'SD'		Ctr.- Ctr. Bearings	End-End Beam	No. of Diaphragms	Stud Shear Connector Spacings					Studs Per Line	Total Studs	Deflections			Calculated Weight by 'D'							Bearing Type	
		Exp.	Fixed				a	b	c	d	e			1/4 Pt.	1/2 Pt.	3/4 Pt.	0°	5°	10°	15°	20°	25°	30°	Exp.	Fixed
30'	W33x118	3.869'	3.624'	28'-0"	29'-1"	8	NON-COMPOSITE							.004'	.006'	.004'	20106	20113	20134	20171	20225	20299	20395	EX-I	FX-IV
35'	W33x118	3.869'	3.624'	33'-0"	34'-1"	8	NON-COMPOSITE							.008'	.012'	.008'	23056	23063	23094	23121	23175	22949	23345	EX-I	FX-IV
40'	W33x118	3.869'	3.624'	38'-0"	39'-1"	8	NON-COMPOSITE							.014'	.020'	.014'	26006	26013	26034	26071	26125	26199	26295	EX-II	FX-IV
45'	W33x118	3.869'	3.624'	43'-0"	44'-1"	8	NON-COMPOSITE							.023'	.033'	.023'	28956	28963	28984	29021	29075	29149	29245	EX-II	FX-IV
50'	W33x118	3.869'	3.624'	48'-0"	49'-1"	8	6-Spacings at 6"	24-Spacings at 7"	24-Spacings at 7"	24-Spacings at 7"	6-Spacings at 6"	2	850	.033'	.047'	.033'	31906	31913	31934	31971	32025	32099	32195	EX-III	FX-IV
55'	W33x118	3.869'	3.624'	53'-0"	54'-1"	8	22-Spacings at 7"	13-Spacings at 8"	15-Spacings at 8"	13-Spacings at 8"	22-Spacings at 7"	2	860	.048'	.068'	.048'	35530	35537	35559	35596	35650	35723	35819	EX-III	FX-IV
60'	W33x130	3.889'	3.644'	58'-0"	59'-1"	8	20-Spacings at 7"	17-Spacings at 8"	18-Spacings at 8"	17-Spacings at 8"	20-Spacings at 7"	2	930	.062'	.087'	.062'	42024	42031	42053	42090	42144	42217	42313	EX-III	FX-IV
70'	W33x130	3.889'	3.644'	68'-0"	69'-1"	8	6-Spacings at 8"	26-Spacings at 9"	28-Spacings at 9"	26-Spacings at 9"	6-Spacings at 8"	2	930	.117'	.164'	.117'	48524	48531	48553	48590	48644	48717	48813	EX-III	FX-IV
80'	W33x152	3.922'	3.677'	78'-0"	79'-1"	8	18-Spacings at 8"	15-Spacings at 10"	29-Spacings at 12"	15-Spacings at 10"	18-Spacings at 8"	2	960	.167'	.234'	.167'	64396	64403	64425	64462	64516	64589	64685	EX-III	FX-IV



FRAMING PLAN (0° SKEW)

FRAMING PLAN (Lt. Fwd. Skew)
(D = Designated Skew Angle)

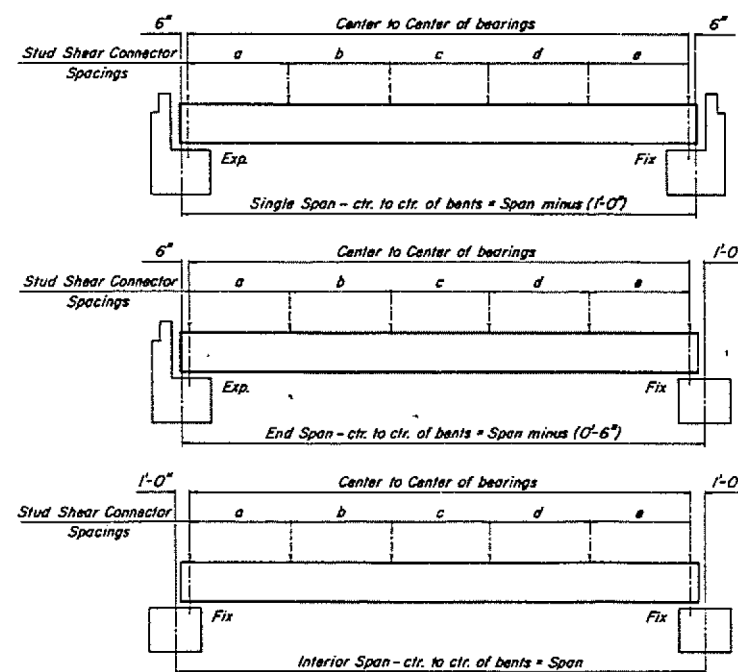
FRAMING PLAN (Rt. Fwd. Skew)
(D = Designated Skew Angle)

DIMENSION 'A'B'B'

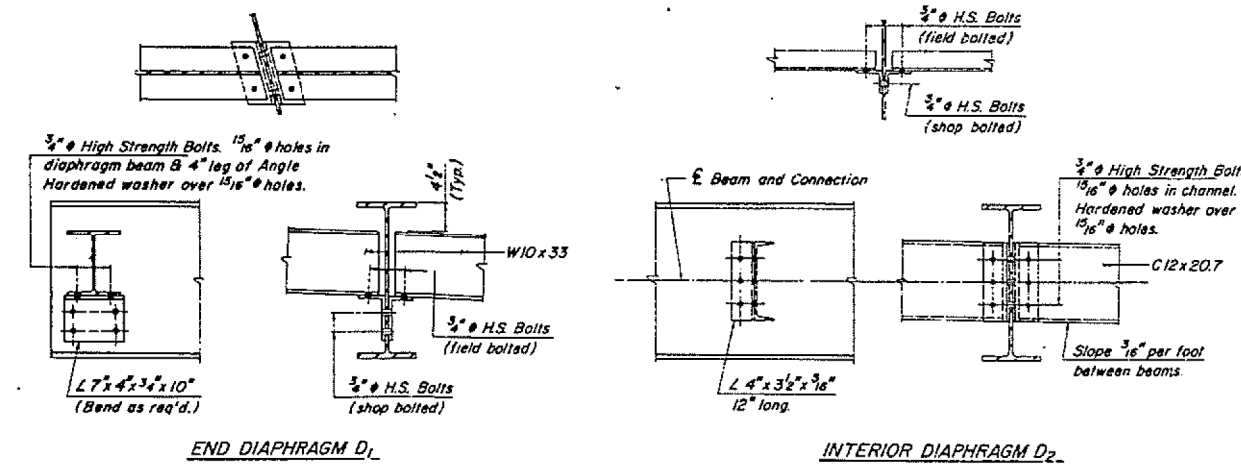
'D'	'A'	'B'
5°	7'-3 1/16"	7'-6"
10°	7'-4 7/8"	1'-3 7/16"
15°	7'-6 3/8"	1'-11 1/16"
20°	7'-9 9/16"	2'-7 7/8"
25°	8'-0 3/8"	3'-4 13/16"
30°	8'-5 1/8"	4'-2 1/2"

DESIGN STRESSES

f_y = 50,000 psi
n = 9 (Composite)

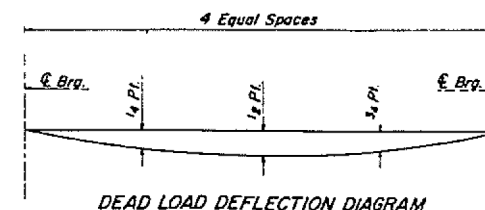


TYPICAL ELEVATIONS

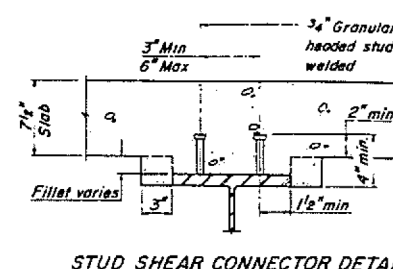


END DIAPHRAGM D₁

INTERIOR DIAPHRAGM D₂



DEAD LOAD DEFLECTION DIAGRAM



STUD SHEAR CONNECTOR DETAIL

STEEL BEAM BRIDGES	
STEEL BEAM DETAILS	
32' ROADWAY	W33 BEAMS
STANDARD SB-3233	

FOR INFORMATION ONLY

USER NAME = stefenmk	DESIGNED -	REVISED -
	DRAWN -	REVISED -
PLOT SCALE = 100,0000' / in.	CHECKED -	REVISED -
PLOT DATE = 8/21/2019	DATE -	REVISED -

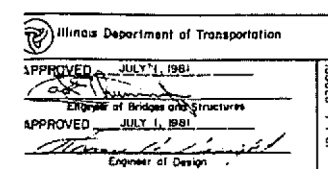
STATE OF ILLINOIS
DEPARTMENT OF TRANSPORTATION

EXISTING PLAN
STRUCTURE 026-0091

SCALE: N/A SHEET 16 OF 22 SHEETS STA. TO STA.

F.A. RTE.	SECTION	COUNTY	TOTAL SHEETS	SHEET NO.
*	**	***	27	21
CONTRACT NO. 74926				
ILLINOIS FED. AID PROJECT				

MODEL: Default FILE: \\bldg-2\public\harcourt\dot\documents\DOT\Office\Bridges\2019\026-0091\026-0091.dwg

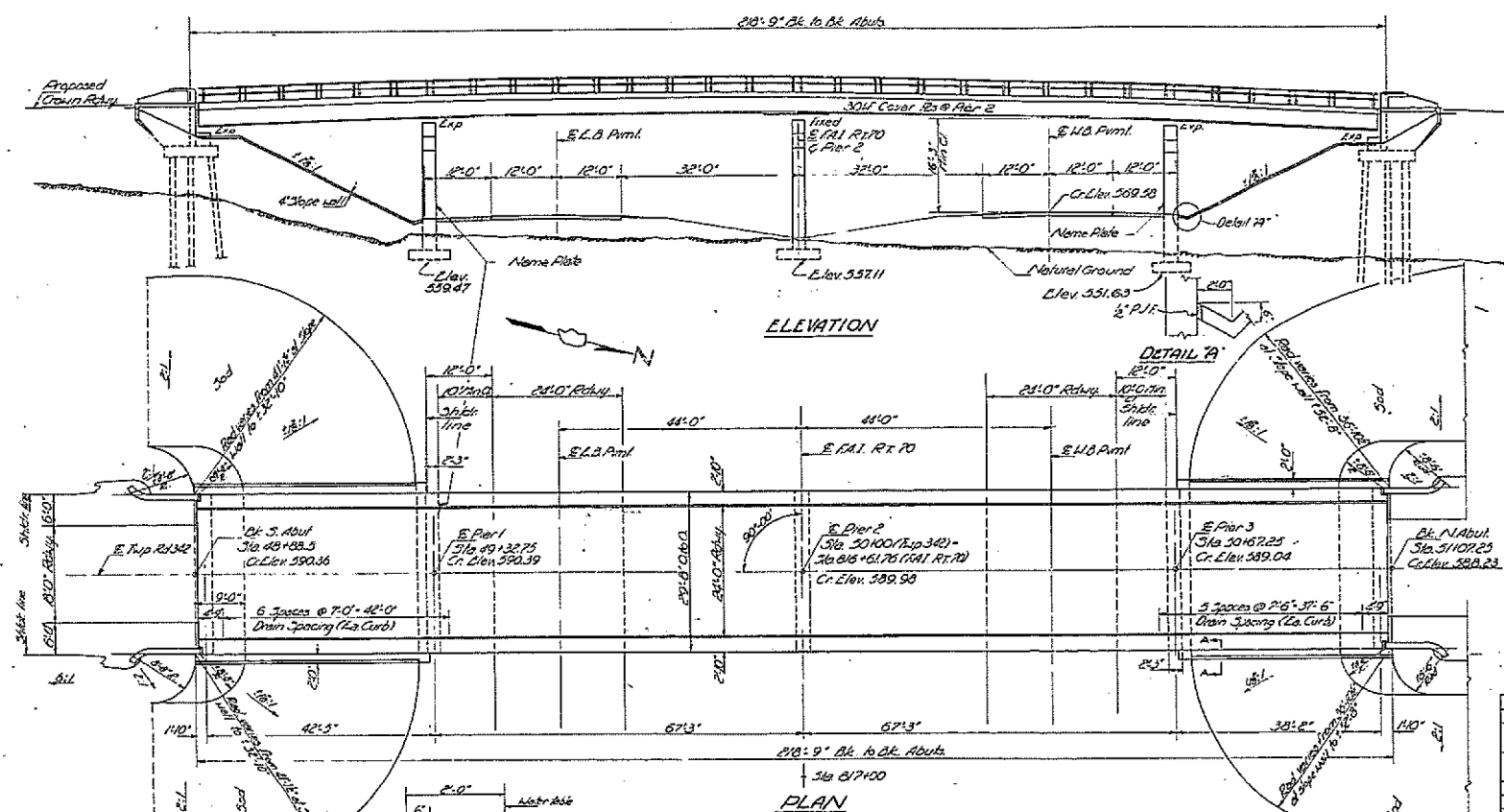


* VARIOUS
** D7 BRIDGE PAINTING 2020-1
*** EFFINGHAM & FAYETTE

Existing Structure - None
 21' x 368' Down fence line L11A1.70
 Sta 016+56.3 R.R. Spk in RR
 (Vertical Curve Top Rd 342) Elev 367.39

STATE OF ILLINOIS
 DEPARTMENT OF PUBLIC WORKS & BUILDINGS
 DIVISION OF HIGHWAYS

DATE	REVISED	BY	REASON	SHEET NO.
7-15-60	26-4	STEFFENK	47	15
PROJECT NO. 70-3 (43)69				2 SHEETS

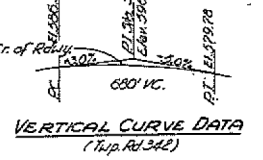


GENERAL NOTES
 Class X Concrete shall be used throughout.
 Coarse aggregate which is to be used in end piers must be absolutely free of chert, flint, limestone, lignite and soft sandstone.
 The concrete floor slab shall be poured in one continuous operation between joints and shall be finished in accordance with Art 519 of the Standard Specifications.
 The curb and 3'6" outside of longitudinal construction joint, shown on cross section, shall be poured monolithically.
 All rods shall be #3 unless noted.
 Piles shall be placed in accordance with Article 609(c) of the Standard Specifications.
 All rocks, boiler bearing Rs, lead Rs, pinkeys and anchor bolts shall be fabricated and set accordance with Art. 513 of the Standard Specifications and are included in quantity of structural steel. Estimate weight of this steel is 6635 lbs.
 Anchor bolts of abutments shall be set before riveting diaphragms over supports.
 All structural steel and metal handrail shall be inspected by the Illinois Division of Highways before painting.
 Metal handrail and structural steel, except the anchor bolts, shall receive one shop coat of red lead paint and two field coats of aluminum paint, see Art. 55.1 to 55.5 inclusive of the Standard Specifications. All paint shall be furnished and applied by the Contractor.
 The slope wall is to be reinforced with #4 gauge welded wire fabric 6"x6" mesh, and weighing not less than 36 lbs. per 100 sq. ft.
 Welding shall comply with Art. 54.3 (a) of the Standard Specifications.
 Cover plates and beams to which they are welded shall comply with the specifications for structural steel for welding A3177 designation A-313.
 The Contractor shall drive 1 test pile (in permanent location) as directed by the Engineer before ordering remainder of pile. The test shall be driven at South Abut.

TOTAL BILL OF MATERIAL

ITEM	Super	Sub	Total
Class X Excavation for Structure	Cu. Yds.	350	350
Class X Concrete	Cu. Yds.	174.9	212.0
Structural Steel	Tons	161.710	161.710
Metal Handrail	lin. ft.	434	434
Reinforcement Bars	Tons	13.660	13.660
Concrete Piles	Lin. ft.	390	390
Test Pile	Each	1	1
Name Plates	Each	2	2
Slope Wall, 4"	Sq. Yds.	376	376

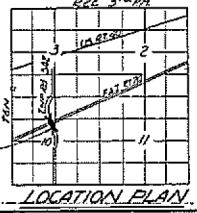
DESIGNED: Robert P. Plummer
 CHECKED: Oscar R. Rubin
 DRAWN: A. Barozzi
 JULY 15 1960
 APPROVED: [Signature]



DESIGN STRESSES
 f_c = 4000 psi. Super & Substr.
 f_s = 75 psi. (Footings)
 f_s = 20,000 psi. Reinforcement
 f_s = 18,000 psi. Struct.
 n = 10
 LOADING H15-312-44

STATION 816+676
 BUILT 196 BY
 STATE OF ILLINOIS
 F.A.I. RT. 70 SEC. 26-4HB1
 EA. PROJ. 70-3 (43)69
 LOADING H15-312-44

NAME PLATE
 (See Standard 213)



GENERAL PLAN & ELEVATION
 L.R. 342 OVER F.A.I. 70
 PROJECT 70-3 (43)69
 F.A.I. RT. 70 SEC. 26-4HB1
 FAYETTE COUNTY
 STA. 816+61.76

FOR INFORMATION ONLY

USER NAME = steffenk	DESIGNED -	REVISED -
	DRAWN -	REVISED -
PLOT SCALE = 100,000' / in.	CHECKED -	REVISED -
PLOT DATE = 8/21/2019	DATE -	REVISED -

STATE OF ILLINOIS
 DEPARTMENT OF TRANSPORTATION

EXISTING PLAN
 STRUCTURE 026-0076

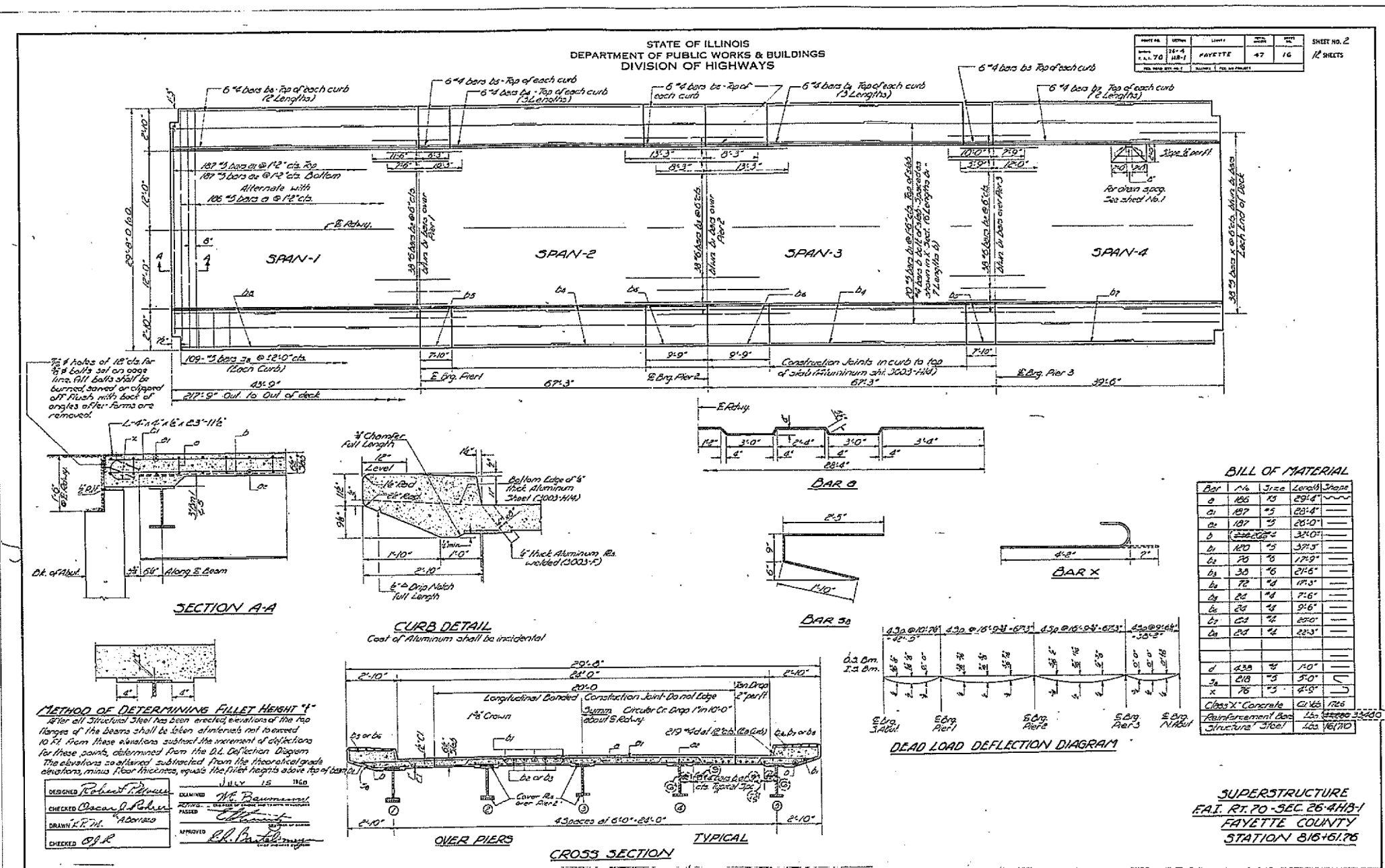
SCALE: N/A SHEET 17 OF 22 SHEETS STA. TO STA.

F.A. RTE.	SECTION	COUNTY	TOTAL SHEETS	SHEET NO.
*	**	***	27	22
CONTRACT NO. 74926				
ILLINOIS FED. AID PROJECT				

MODEL: Default
 FILE: \\pwworkroom.dia.illinois.gov\pwworkroom\Documents\DOT - Office\Drawings\70-3(43)69-Substructure.dwg

STATE OF ILLINOIS
DEPARTMENT OF PUBLIC WORKS & BUILDINGS
DIVISION OF HIGHWAYS

PROJECT NO.	SECTION	SHEET NO.	TOTAL SHEETS
12-4	PAYETTE	47	16
SHEET NO. 2		12 SHEETS	



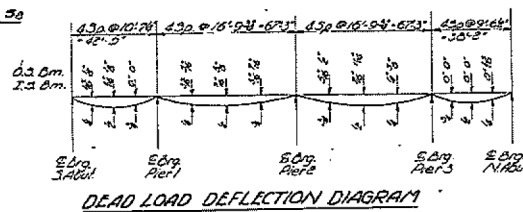
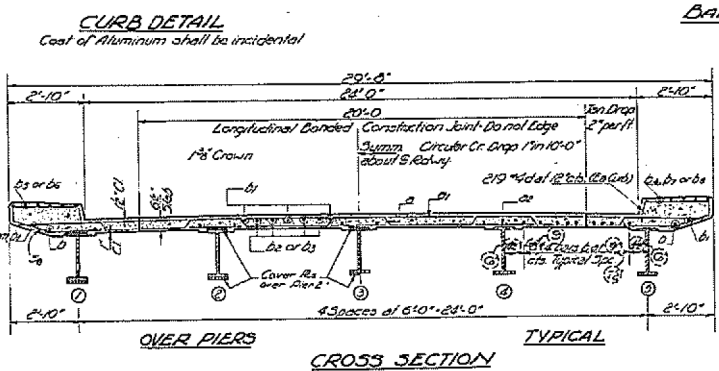
BILL OF MATERIAL

Bar	Size	Length	Shape
a	100	13	29'4"
b1	107	23	20'4"
b2	107	23	20'0"
b	107	23	32'0"
b1	120	25	37'5"
b2	70	75	17'9"
b3	30	76	21'5"
b4	70	78	17'5"
b5	25	74	7'5"
b6	20	73	9'5"
b7	20	72	22'0"
b8	20	72	22'3"
d	430	31	10'
e	210	75	3'0"
x	78	75	4'5"

Material	Quantity	Remarks
Class X Concrete	1265	1706
Reinforcement Bars	151	33400
Structural Steel	265	16710

METHOD OF DETERMINING FILLET HEIGHT "f"
After all structural steel has been erected, elevations of the top flanges of the beams shall be taken at intervals not to exceed 10 ft from these elevations subtract the increment of deflections for these points, determined from the D.L. Deflection Diagram. The elevations so obtained, subtracted from the theoretical grade elevations, minus floor thickness, equals the fillet height above top of deck.

DESIGNED	<i>Robert P. Jones</i>	EXAMINED	<i>W. Baumann</i>
CHECKED	<i>Robert P. Jones</i>	APPROVED	<i>W. Baumann</i>
DRAWN	<i>L.R.H.</i>	DATE	JULY 15 1968
CHECKED	<i>CPR</i>		



SUPERSTRUCTURE
F.A.I. RT. 70 - SEC. 26-4H3-1
FAYETTE COUNTY
STATION 816+51.76

FOR INFORMATION ONLY

USER NAME = steffenmk	DESIGNED -	REVISED -
	DRAWN -	REVISED -
PLOT SCALE = 100,000' / in.	CHECKED -	REVISED -
PLOT DATE = 8/21/2019	DATE -	REVISED -

STATE OF ILLINOIS
DEPARTMENT OF TRANSPORTATION

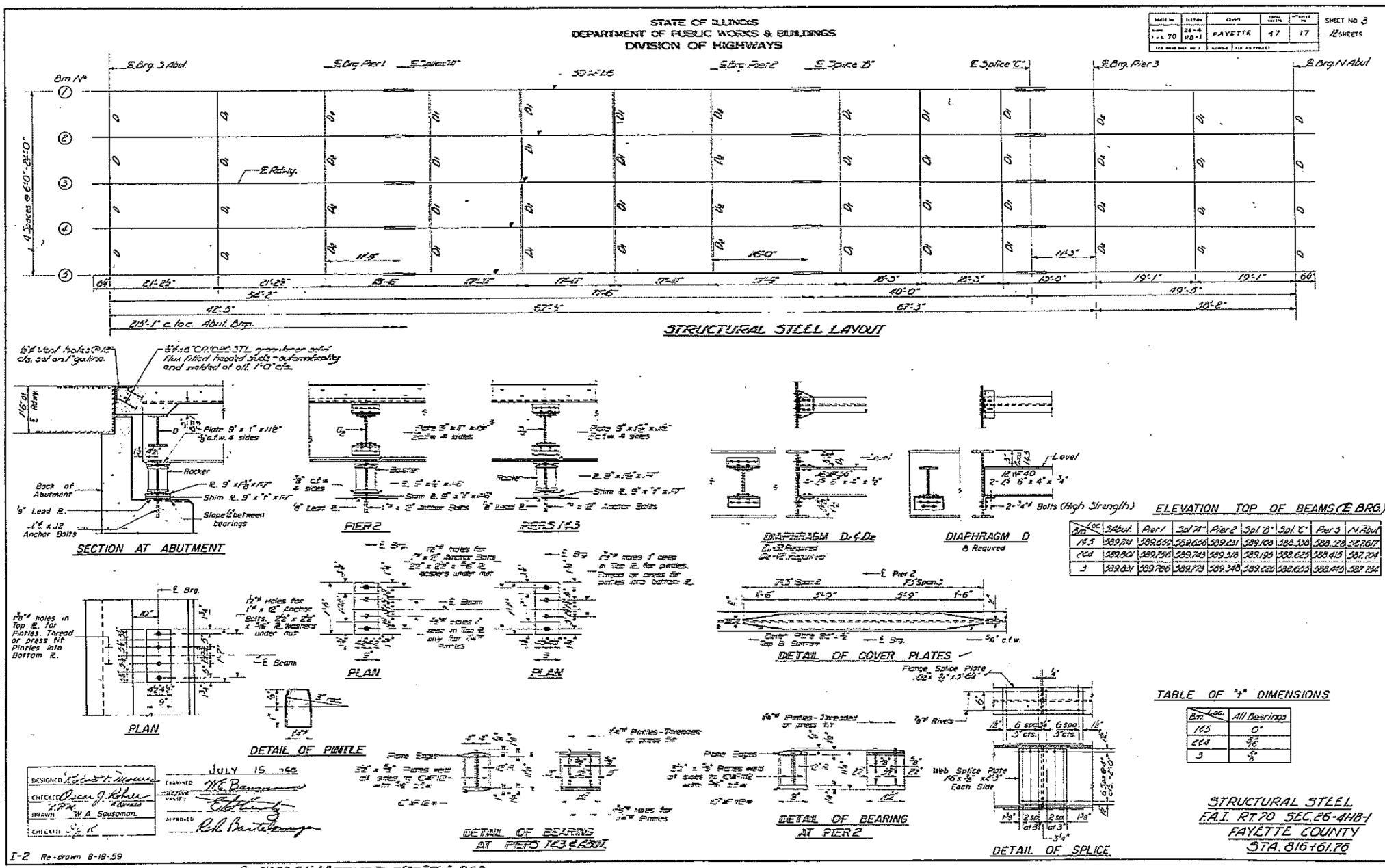
EXISTING PLAN
STRUCTURE 026-0076

SCALE: N/A SHEET 18 OF 22 SHEETS STA. TO STA.

F.A. RTE.	SECTION	COUNTY	TOTAL SHEETS	SHEET NO.
*	**	***	27	23
CONTRACT NO. 74926			ILLINOIS FED. AID PROJECT	

MODEL: Default
 FILE: h:\work\p\pub\h\room\da\illink\gov\p\pub\dot\Documents\DOT - Office\Drawlet 7\Project\74926\CADD\Draw\026-0076-01-23-18.dwg
 DATE: 8/21/2019 11:54:18 AM

MODEL: Default
 FILE: \\blm01c01.pwiddot.com\databases\DOT_Offices\Illinois\Projects\74926\CADD\Drawings\74926-STR-Steel.dwg
 PROJECT: 74926\CADD\Drawings\74926-STR-Steel.dwg



FOR INFORMATION ONLY

USER NAME = steffenk	DESIGNED -	REVISED -
PLOT SCALE = 100,0000' / in.	DRAWN -	REVISED -
PLOT DATE = 8/21/2019	CHECKED -	REVISED -
	DATE -	REVISED -

STATE OF ILLINOIS
DEPARTMENT OF TRANSPORTATION

EXISTING PLAN	
STRUCTURE 026-0076	
SCALE: N/A	SHEET 19 OF 22 SHEETS
STA.	TO STA.

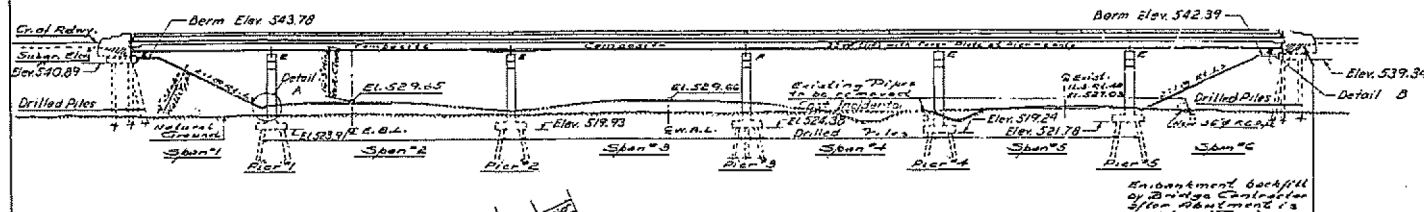
F.A. RTE.	SECTION	COUNTY	TOTAL SHEETS	SHEET NO.
*	**	***	27	24
CONTRACT NO. 74926				
ILLINOIS FED. AID PROJECT				

* VARIOUS
 ** D7 BRIDGE PAINTING 2020-1
 *** EFFINGHAM & FAYETTE

STATE OF ILLINOIS
DEPARTMENT OF PUBLIC WORKS & BUILDINGS
DIVISION OF HIGHWAYS

PROJECT NO.	SECTION	COUNTY	SHEET NO.	TOTAL SHEETS
70	026-1	FAYETTE	31	7

B.M. ** of existing pavement station
205+00 Elev. 527.44.



GENERAL NOTES

Coarse aggregate to be used in parapet handrails and end posts must be free of chert, flint, limonite, lignite and soft sandstone. The concrete floor slab shall be finished in accordance with Art. 519 of the Standard Specifications.

Slope Wall shall be reinforced with welded wire fabric 6"x6" mesh, weighing 38# per 100 Sq. Ft.

All reinforcement bars shall be lapped 20 diameters unless otherwise shown.

All structural steel shall conform to ASTM Designation A-36 Rivers "A", Open Rives "B", unless otherwise noted. Anchor bolts shall be set before fastening diaphragms over supports.

Exposed surfaces of the expansion devices, inaccessible after erection, shall receive two shop coats of red lead paint. All other surfaces shall be given one shop coat of red lead paint. Anchor studs shall not be painted.

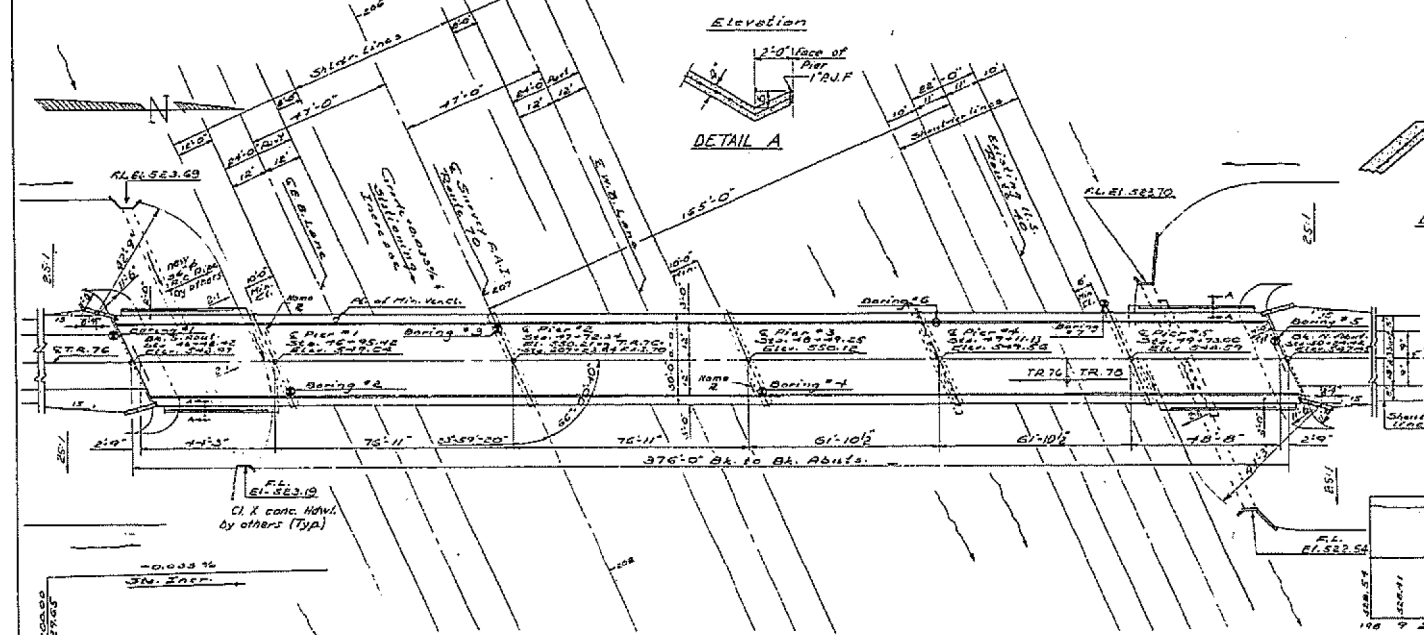
Expansion devices are included in the quantity of structural steel. Est. weight = 730 Lbs.

Except as otherwise provided, all structural steel shall receive one shop coat of red lead paint and two field coats of aluminum paint. See Article 561 to 565 inclusive of the Standard Specifications.

Drilled piles at abutments shall be placed in holes prepared from the embankment.

The contractor shall make one pile load test at Pier 3 in a permanent location as directed by the Engineer before placing the remainder of piles.

For TOTAL BILL OF MATERIAL See Sheet 2.

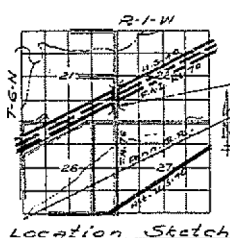
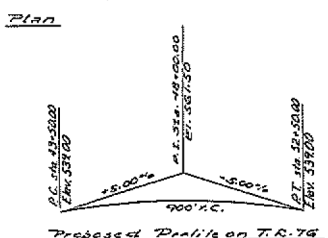
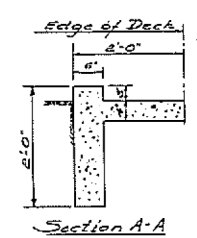


STATION 207+23.84
BUILT 196 BY
STATE OF ILLINOIS
F.A.I. RT. 70 SEC. 26-0NB-1
F.A. PARA. 1-70-2 (6)
LOADING HS15
NAME PLATE
see std 2113-1

118	9	200	1	202	3	204	5	206	7	208	9	210	1	212	3	214	5	216	7	218
-----	---	-----	---	-----	---	-----	---	-----	---	-----	---	-----	---	-----	---	-----	---	-----	---	-----

DESIGNED: *Stacy S. Lin*
CHECKED: *Stacy S. Lin*
DRAWN: *R. P. Summer*
CHECKED: *Stacy S. Lin*

EXAMINED: *Jan 20 1965*
PASSED: *John C. [Signature]*
APPROVED: *[Signature]*



DESIGN STRESSES

$f_c = 1400$ psi. Super. & Sub
 $f_s = 25,000$ psi. Bending
 $f_s = 20,000$ psi. Reinf.
 $f_s = 20,000$ psi. Struct. (7-36)
 $n = 10$
 $E_s = 29,000,000$ non-composite; $29,000,000$ composite

LOADING: HS15-44

General Plan & Elevation
Project: I-70-2 (6)as
F.A.I. Rt. 70-Section 26-0NB-1
Fayette County
Sta. 207+23.84

FOR INFORMATION ONLY

MODEL: Default
FILE: 144162.ctb
PROJECT: 74926\G:\CADD\DATA\CADD\PROJECTS\74926-1\74926-1.dwg

USER NAME = steffemk	DESIGNED -	REVISED -
PLOT SCALE = 100.0000' / in.	DRAWN -	REVISED -
PLOT DATE = 8/21/2019	CHECKED -	REVISED -
	DATE -	REVISED -

STATE OF ILLINOIS
DEPARTMENT OF TRANSPORTATION

EXISTING PLAN
STRUCTURE 026-0074

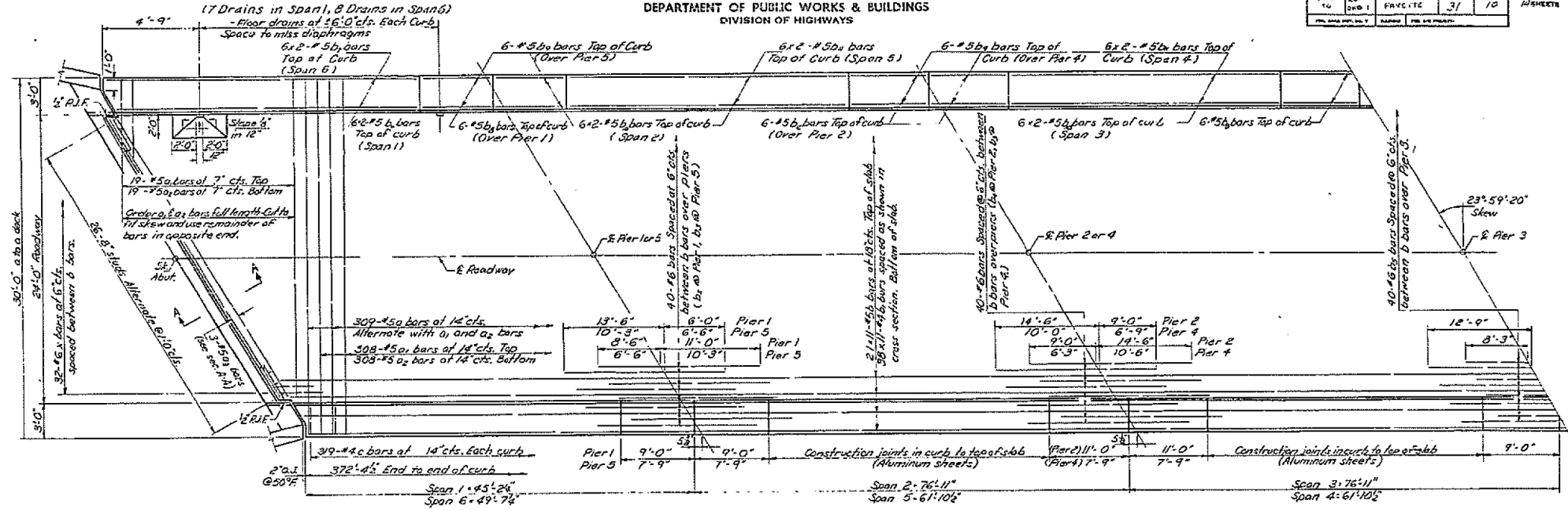
SCALE: N/A SHEET 20 OF 22 SHEETS STA. TO STA.

* VARIOUS
** D7 BRIDGE PAINTING 2020-1
*** EFFINGHAM & FAYETTE

F.A. RTE.	SECTION	COUNTY	TOTAL SHEETS	SHEET NO.
*	**	***	27	25
CONTRACT NO. 74926				
ILLINOIS FED. AID PROJECT				

STATE OF ILLINOIS
DEPARTMENT OF PUBLIC WORKS & BUILDINGS
DIVISION OF HIGHWAYS

DATE	NO.	REVISION	BY	DATE	SHEET NO. 4 14 SHEETS
PREPARED BY	21	REVISED BY	31	10	
DESIGNED BY	21	REVISED BY	31	10	
CHECKED BY	21	REVISED BY	31	10	

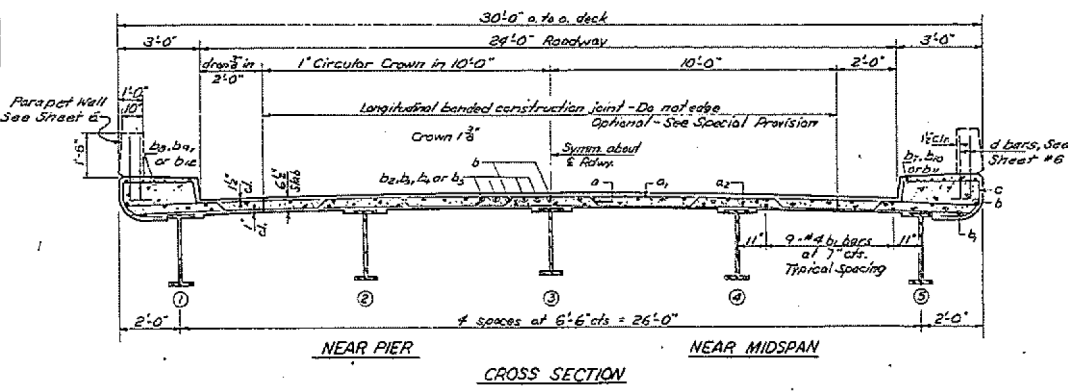


MOMENTS (In Kips-Ft)

	DL	SD.L	LL	IMP	Total
Pier 1	043	60	18	47	320
Pier 2	260	55	182	44	541
Pier 3	130	53	347	83	668
Pier 4	404	81	238	57	780
Pier 5	174	35	345	02	656
Pier 6	275	60	213	51	599

*Includes non-comp moment 180, comp moment +82
**Includes non-comp moment 174, comp moment +82.

	DL	SD.L	LL	IMP	Total
Pier 4	91	209	114	211	625
Pier 5	53	28	56	27	164
Pier 6	395	203	308	189	1095
Pier 7	78	49	73	45	245
Pier 8	514	528	503	394	1939



PROPERTIES

Steel Section

I _s	5886.9 in ⁴
S _{ts}	358.3 in ³
S _{bs}	358.3 in ³

Composite Section

I _c	14,084.5 in ⁴
S _{tc}	2750.9 in ³
S _{bc}	5027 in ³

Note: Work this sheet with sheet No. 5

DESIGNED W.A. Harrison
CHECKED Stanley S. Lin
A.F.F. Joseph L. Putnam
DRAWN Thomas A. Lewis
CHECKED Stanley S. Lin

EXAMINED [Signature]
PASSED [Signature]
APPROVED [Signature]

JAN. 30 1865

SUPERSTRUCTURE
F.A.I. R.T. SEC. 26-CHB-1
FAYETTE COUNTY
STATION 207+23.84



FOR INFORMATION ONLY

MODEL: Default
FILE: 1411426_001\planroom\daw\pww\DOT\Documents\DOT - Offices\Dist\ct 7\Projects\74926\CADD\data\CADD\sheet\074926-std\sheet11.dgn

USER NAME = steffenmk	DESIGNED -	REVISED -
PLOT SCALE = 100,0000' / in.	DRAWN -	REVISED -
PLOT DATE = 8/21/2019	CHECKED -	REVISED -
	DATE -	REVISED -

STATE OF ILLINOIS
DEPARTMENT OF TRANSPORTATION

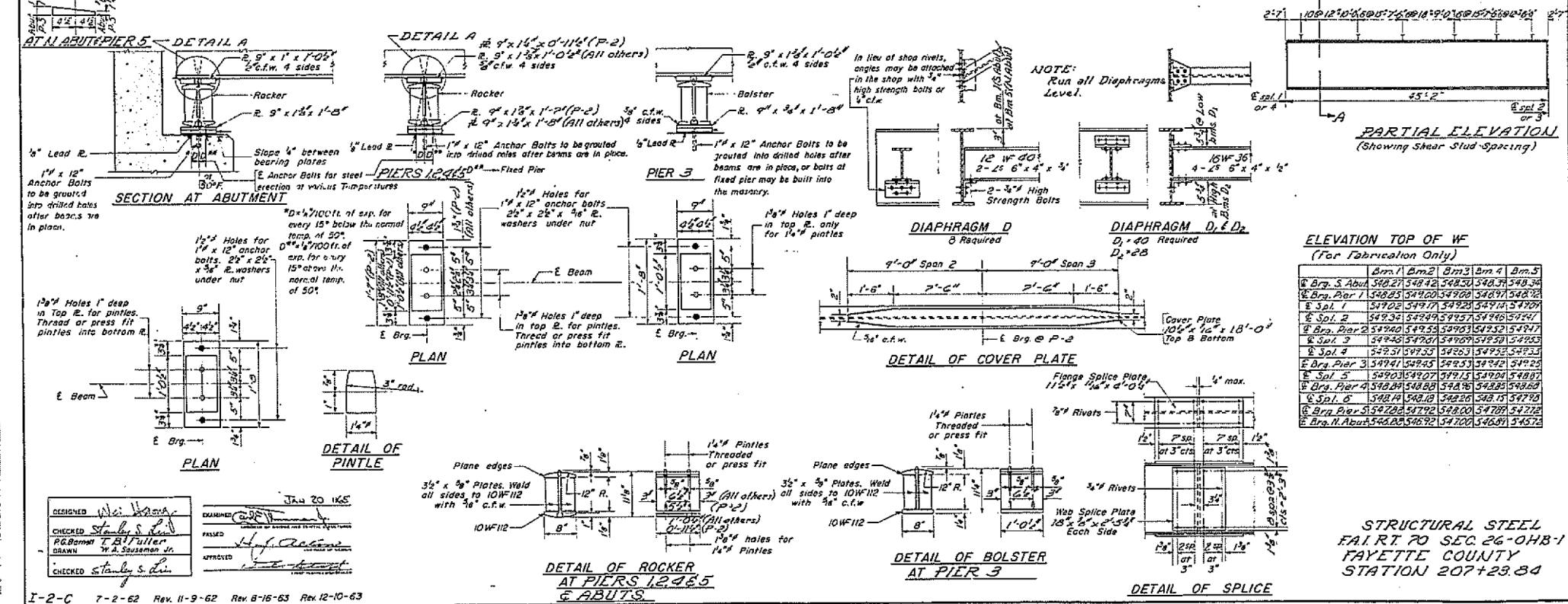
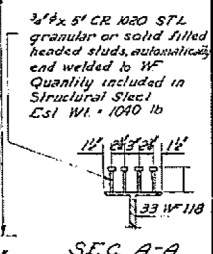
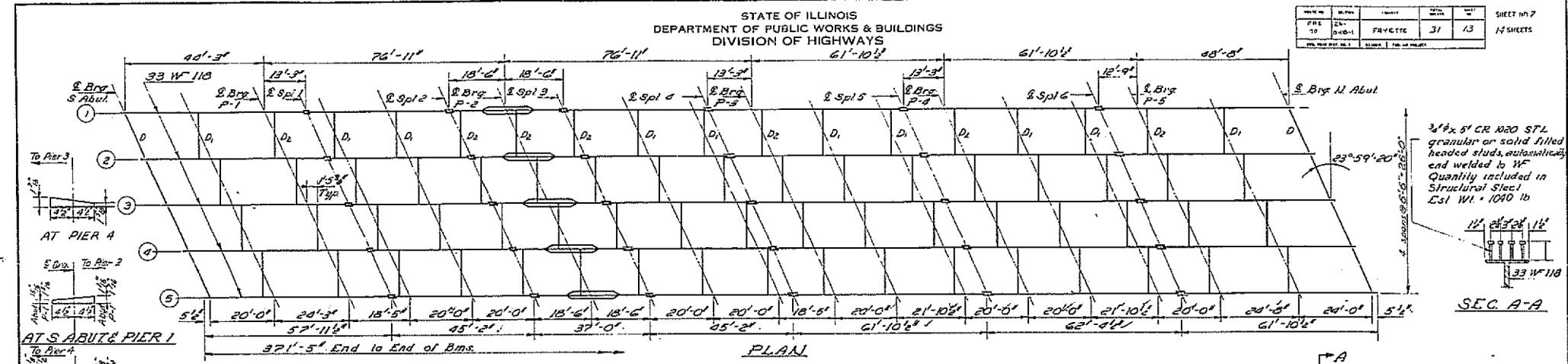
EXISTING PLAN STRUCTURE 026-0074	
SCALE: N/A	SHEET 21 OF 22 SHEETS
STA.	TO STA.

* VARIOUS
** D7 BRIDGE PAINTING 2020-1
*** EFFINGHAM & FAYETTE

F.A. RTE.	SECTION	COUNTY	TOTAL SHEETS	SHEET NO.
*	**	***	27	26
				CONTRACT NO. 74926
ILLINOIS FED. AID PROJECT				

STATE OF ILLINOIS
DEPARTMENT OF PUBLIC WORKS & BUILDINGS
DIVISION OF HIGHWAYS

NO. 10	NO. 11	NO. 12	NO. 13	NO. 14	NO. 15
10	11	12	13	14	15
FAYETTE			31	13	
SHEET NO. 7					
15 SHEETS					



ELEVATION TOP OF WF
(For Fabrication Only)

	Brm 1	Brm 2	Brm 3	Brm 4	Brm 5
E Brg. 5 Abut.	548.27	548.42	548.50	548.57	548.58
E Brg. Pier 1	548.25	548.20	549.00	548.97	548.92
E Spl. 1	549.02	549.17	549.28	549.10	549.09
E Spl. 2	549.31	549.45	549.57	549.46	549.47
E Brg. Pier 2	549.40	549.35	549.03	549.52	549.47
E Spl. 3	549.40	549.01	549.09	549.50	549.03
E Spl. 4	549.31	549.33	549.63	549.55	549.35
E Brg. Pier 3	549.41	549.45	549.53	549.42	549.45
E Spl. 5	549.03	549.07	549.15	549.04	548.95
E Brg. Pier 4	548.24	548.88	548.98	548.85	548.80
E Spl. 6	548.94	548.10	548.20	548.13	547.90
E Brg. Pier 5	547.28	547.92	548.00	547.88	547.72
E Brg. N. Abut.	546.85	546.92	547.00	546.81	546.78

DESIGNED: W. J. Kania
CHECKED: Stanley S. Davis
DRAWN: W. A. Sasseman, Jr.
DATE: JAN 20 1965

EXAMINED: W. J. Kania
APPROVED: W. J. Kania
DATE: JAN 20 1965

STRUCTURAL STEEL
FA. RT. 70 SEC. 26-OHB-1
FAYETTE COUNTY
STATION 207+23.84

I-2-C 7-2-62 Rev. 11-9-62 Rev. 8-16-63 Rev. 12-10-63

FOR INFORMATION ONLY

STATE OF ILLINOIS
DEPARTMENT OF TRANSPORTATION

EXISTING PLAN
STRUCTURE 026-0074

USER NAME = steffemk	DESIGNED -	REVISED -	SCALE: N/A	SHEET 22	OF 22 SHEETS	STA.	TO STA.	ILLINOIS	FED. AID PROJECT
PLOT SCALE = 100,000' / in.	DRAWN -	REVISED -							
PLOT DATE = 8/21/2019	CHECKED -	REVISED -							
	DATE -	REVISED -							

* VARIOUS
** D7 BRIDGE PAINTING 2020-1
*** EFFINGHAM & FAYETTE

F.A. RTE.	SECTION	COUNTY	TOTAL SHEETS	SHEET NO.
*	**	***	27	27
CONTRACT NO. 74926				