

STATE OF ILLINOIS
DEPARTMENT OF TRANSPORTATION

F.A.S. ATE.	SECTION	COUNTY	TOTAL SHEETS	SHEET NO.
2862	(41-8,1,2)TR-1	JEFFERSON	22	1
		ILLINOIS	CONTRACT NO 78754	

FOR INDEX OF SHEETS, SEE SHEET NO. 3
FOR SUMMARY OF QUANTITIES, SEE SHEET NO. 4

PROPOSED HIGHWAY PLANS

FAS ROUTE 2826 (IL 37)
SECTION (41-8,1,2) TR-1
PROJECT HSIP-NQMG(850)
TREE REMOVAL
JEFFERSON COUNTY

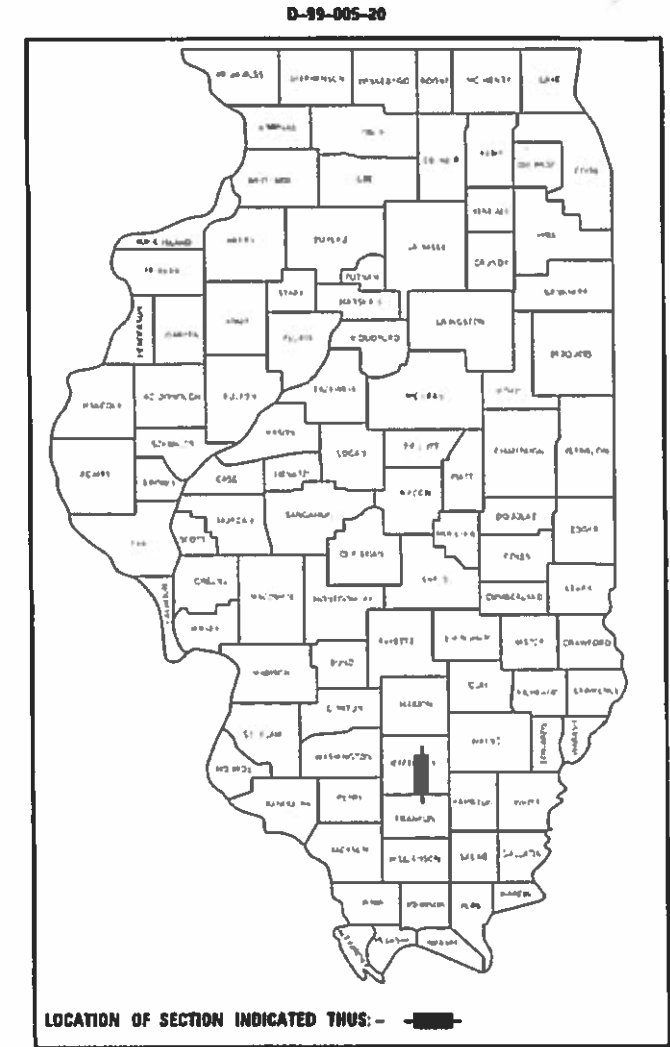
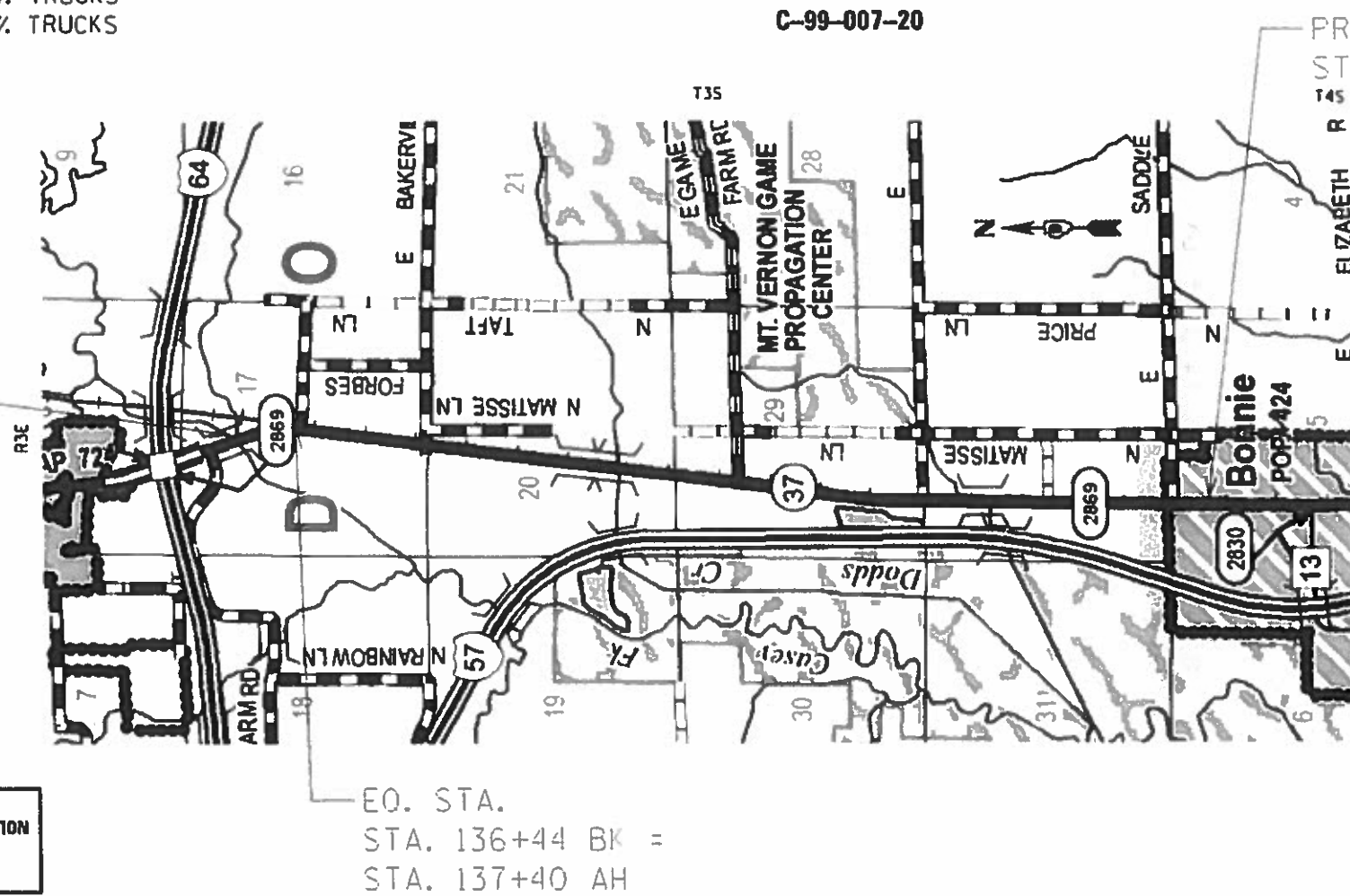
TRAFFIC DATA

IL 37 TRAFFIC DATA
2015 ADT = 3,850 WITH 11% TRUCKS
2020 ADT = 4,050 WITH 11% TRUCKS
2040 ADT = 4,940 WITH 11% TRUCKS

TOWNSHIPS

DODDS
SPRING GARDEN

PROJECT BEGINS
STA. 125+26



J.U.L.I.E.
JOINT UTILITY LOCATION INFORMATION FOR EXCAVATION
1-800-892-0123
OR 811

EQ. STA.
STA. 136+44 BK =
STA. 137+40 AH

GROSS LENGTH = 23229 FT. = 4.40 MILES
NET LENGTH = 23229 FT. = 4.40 MILES

PROJECT ENGINEER: VALERIE ROLLA (618) 351-5214
PROJECT DESIGNER: BRANDY MAES (618) 351-5292

CONTRACT NO. 78754

STATE OF ILLINOIS
DEPARTMENT OF TRANSPORTATION

SUBMITTED August 27 2019
Kath Roberts
REGION FIVE ENGINEER

Oct 4 2019
See E.A. Etk
ENGINEER OF DESIGN AND ENVIRONMENT

Oct 4 2019
David P. Chief
DIRECTOR OF HIGHWAYS PROJECT IMPLEMENTATION

PRINTED BY THE AUTHORITY
OF THE STATE OF ILLINOIS

INDEX OF SHEETS

<u>SHEET NO.</u>	<u>DESCRIPTION</u>
1	COVER SHEET
2	SIGNATURE SHEET
3	INDEX OF SHEETS, HIGHWAY STANDARDS, COMMITMENTS
4	SUMMARY OF QUANTITIES
5	TREE REMOVAL SCHEDULE
6-14	PLAN SHEETS
15-22	ROW SHEETS

HIGHWAY STANDARDS

000001-07	Standard Symbols, Abbreviations and Patterns
001006	Decimal of an Inch and of a Foot
701001-02	Off-Road Operations, 2L, 2W, More Than 15* Away
701006-05	Off-Road Operations, 2L, 2W, 15* to 24* From Pavement Edge
701336-07	Lane Closure, 2L, 2W, Work Areas in Series, for Speeds > 45 MPH
701901-08	Traffic Control Devices

COMMITMENTS

Trees shall not be removed from April 1st through September 30th.

MODEL: Default
 FILE: h:\m11512\p10\p10planroom.dwg
 PROJECT: 78520\CADD\Drawings\DOT - Offices\Drawings\78520_shts-cvr_shts-cvr_shts-cvr_index.dgn

USER NAME = maesbl	DESIGNED -	REVISED -	STATE OF ILLINOIS DEPARTMENT OF TRANSPORTATION	INDEX OF SHEETS, HIGHWAY STANDARDS & COMMITMENTS	F.A.S. RTE.	SECTION	COUNTY	TOTAL SHEETS	SHEET NO.	
	DRAWN -	REVISED -			2862	(41-8,1,2)TR-1	JEFFERSON	22	3	
PLOT SCALE = 100,0000 ' / in.	CHECKED -	REVISED -			CONTRACT NO. 78754					
PLOT DATE = 8/26/2019	DATE -	REVISED -			SCALE:	SHEET	OF	SHEETS	STA.	TO
					ILLINOIS FED. AID PROJECT					

TREE REMOVAL SCHEDULE

LOCATION	OFFSET			TREE REMOVAL (6 TO 15 UNITS)	TREE REMOVAL (OVER 15 UNITS)	TREE REMOVAL
	FEET			UNIT	UNIT	ACRES
RT 126+01	42	TO	57			0.01
RT 126+32	47	TO	48			
RT 127+10	41	TO	42			0.01
RT 128+31	31	TO	32			
RT 130+34	31	TO	34			0.02
RT 135+45	32	TO	44			
RT 138+05	49	TO	50			0.01
RT 138+42	49	TO	50			
RT 143+46	61	TO	62			0.68
RT 154+30	21	TO	51			
RT 155+04	46	TO	47			0.07
RT 157+30	41	TO	42			
RT 161+45	26	TO	27			0.09
RT 163+84	155	TO	189			
RT 165+75	41	TO	42			1.59
RT 194+98	32	TO	42			
RT 195+64	29	TO	49			0.03
RT 197+31	35	TO	36			
RT 200+00	26	TO	46			0.18
RT 204+50	29	TO	30			
RT 208+24	29	TO	30			0.01
RT 209+09	31	TO	32			
RT 209+20	33	TO	34			0.14
RT 215+00	38	TO	39			
RT 216+30	42				25	
RT 216+82	40			9		
RT 216+85	40			7		
RT 225+57	31				23	
RT 225+85	35				22	
RT 226+26	36				20	
RT 226+41	36				16	
RT 226+58	37				20	
RT 226+90	38				22	
RT 228+10	41				17	
RT 228+10	56			15		
RT 228+75	32				21	
RT 228+31	54				31	
RT 228+88	30			8		
RT 229+15	45			10		
RT 230+40	27				23	
RT 230+42	27			12		
RT 230+56	46			8		
RT 230+71	61			12		
RT 232+33	30			12		
RT 232+35	28			7		
SHEET 1 SUBTOTALS				99	240	3

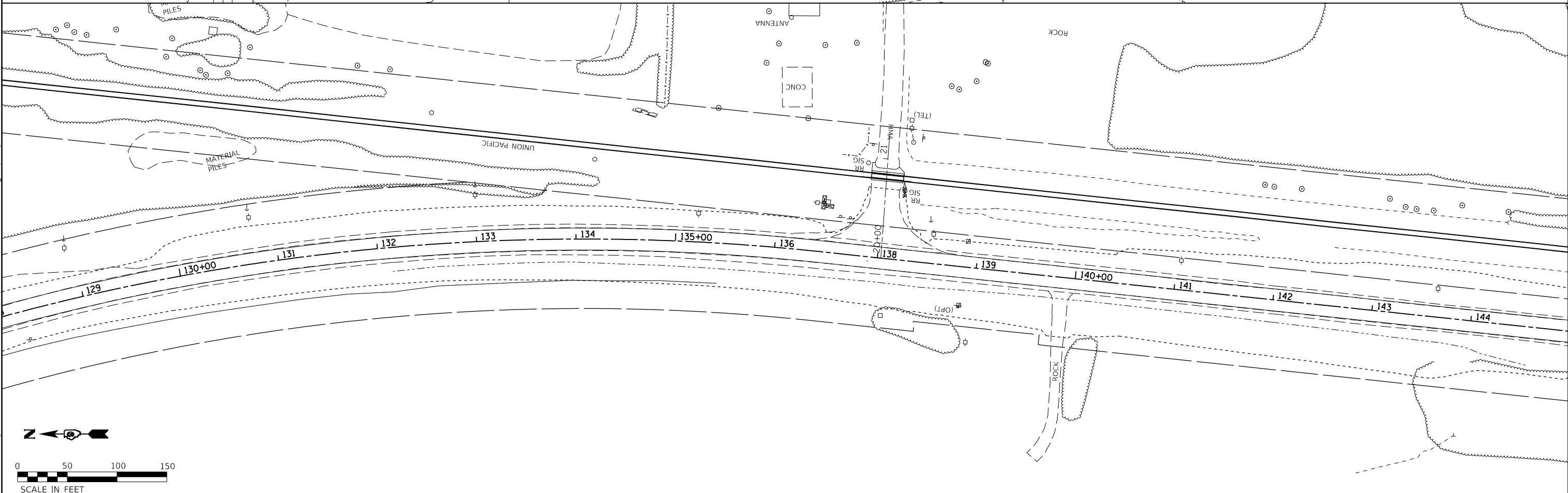
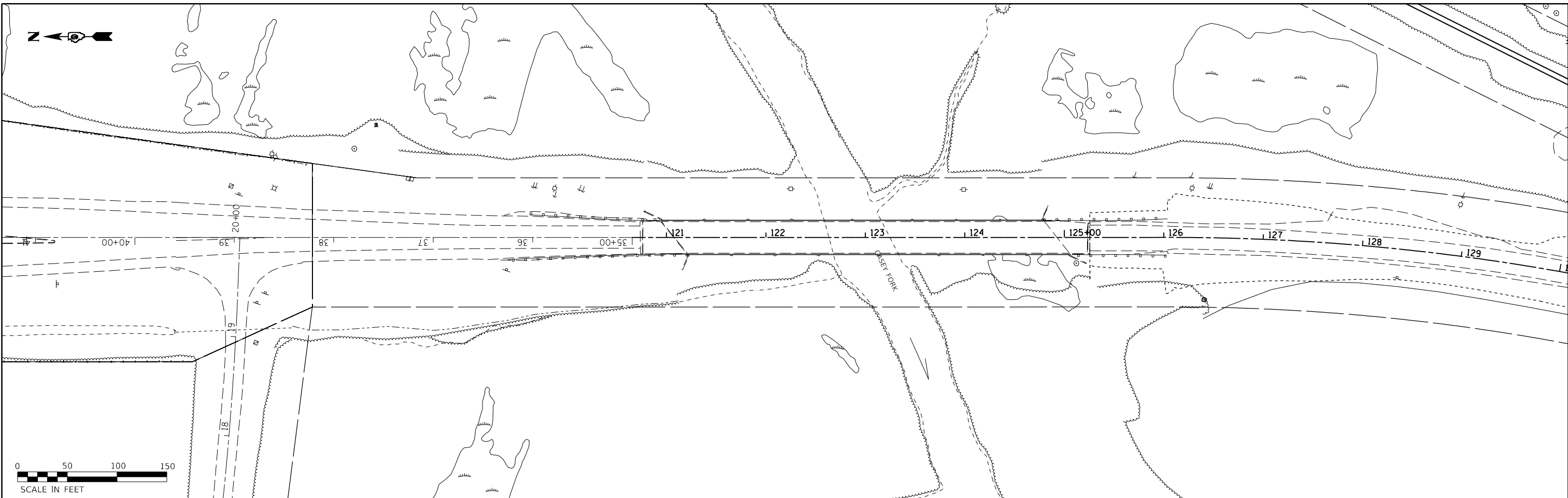
TREE REMOVAL SCHEDULE CONT.

LOCATION	OFFSET			TREE REMOVAL (6 TO 15 UNITS)	TREE REMOVAL (OVER 15 UNITS)	TREE REMOVAL
	FEET			UNIT	UNIT	ACRES
RT 232+35	30			9		
RT 232+48	29			8		
RT 232+50	29			8		
RT 232+53	28			11		
RT 232+59	27			10		
RT 232+83	31	TO	46			0.01
RT 233+06	31	TO	37			
RT 234+25	45			9		
RT 235+25	46			9		
RT 236+05	32				17	
RT 237+31	27	TO	60			0.03
RT 237+92	28	TO	29			
RT 239+16	22	TO	29			0.13
RT 241+32	23	TO	27			
RT 243+65	26	TO	27			0.41
RT 251+67	39	TO	40			
RT 252+89	38	TO	39			0.04
RT 254+06	22	TO	35			
RT 254+69	46	TO	47			0.01
RT 255+08	42	TO	45			
RT 257+91	30	TO	43			0.03
RT 258+97	56	TO	60			
RT 258+86	53			13		
RT 259+07	49			11		
RT 289+12	135	TO	145			0.12
RT 291+55	24	TO	43			
RT 291+64	27	TO	43			0.02
RT 292+37	28	TO	39			
RT 304+03	51	TO	82			0.13
RT 304+84	39	TO	40			
RT 305+39	29	TO	39			0.08
RT 307+23	25	TO	41			
RT 311+60	38				16	
RT 311+60	40				22	
RT 311+83	38				24	
RT 312+24	28				18	
RT 312+24	30			14		
RT 312+82	38				19	
RT 318+77	31			9		
RT 318+78	31			10		
RT 321+25	40	TO	41			0.08
RT 322+23	36	TO	52			
SHEET 2 SUBTOTALS				120	115	1

TREE REMOVAL SCHEDULE CONT.

LOCATION	OFFSET			TREE REMOVAL (6 TO 15 UNITS)	TREE REMOVAL (OVER 15 UNITS)	TREE REMOVAL
	FEET			UNIT	UNIT	ACRES
RT 328+02	44	TO	45			0.15
RT 330+14	41	TO	42			
RT 330+33	37	TO	38			0.11
RT 332+49	44	TO	53			
RT 336+23	47	TO	59			0.04
RT 336+84	40	TO	41			
RT 350+09	30			14		
SHEET 3 SUBTOTALS				14	0	0
SHEET 2 SUBTOTALS				120	115	1
SHEET 1 SUBTOTALS				99	240	3
TOTALS				233	355	4

MODEL: Default
 FILE: h:\a\c\p\pub\harcam.dwg
 PLOT DATE = 8/26/2019
 USER NAME = maesbl
 DESIGNED -
 DRAWN -
 CHECKED -
 DATE -
 REVISED -
 REVISED -
 REVISED -
 REVISED -
 REVISED -
 REVISED -
 STATE OF ILLINOIS
 DEPARTMENT OF TRANSPORTATION
 TREE REMOVAL SCHEDULE
 SCALE: SHEET OF SHEETS STA. TO STA.
 F.A.S. RTE. SECTION COUNTY TOTAL SHEETS SHEET NO.
 2862 (41-8,1,2)TR-1 JEFFERSON 22 5
 CONTRACT NO. 78754
 ILLINOIS FED. AID PROJECT



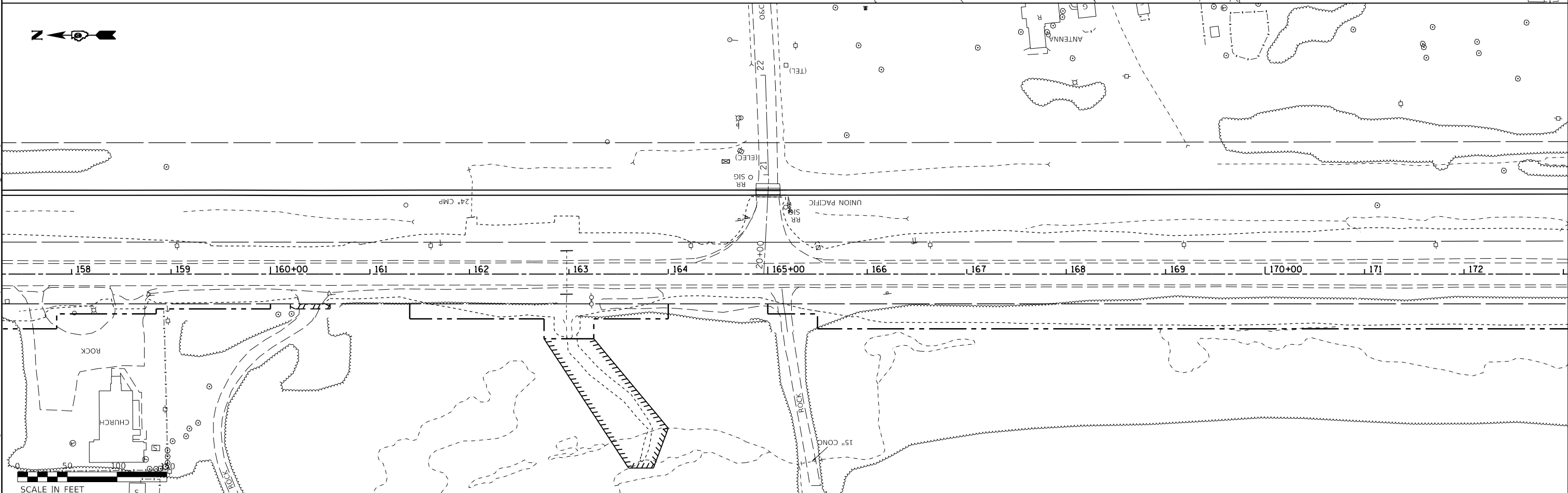
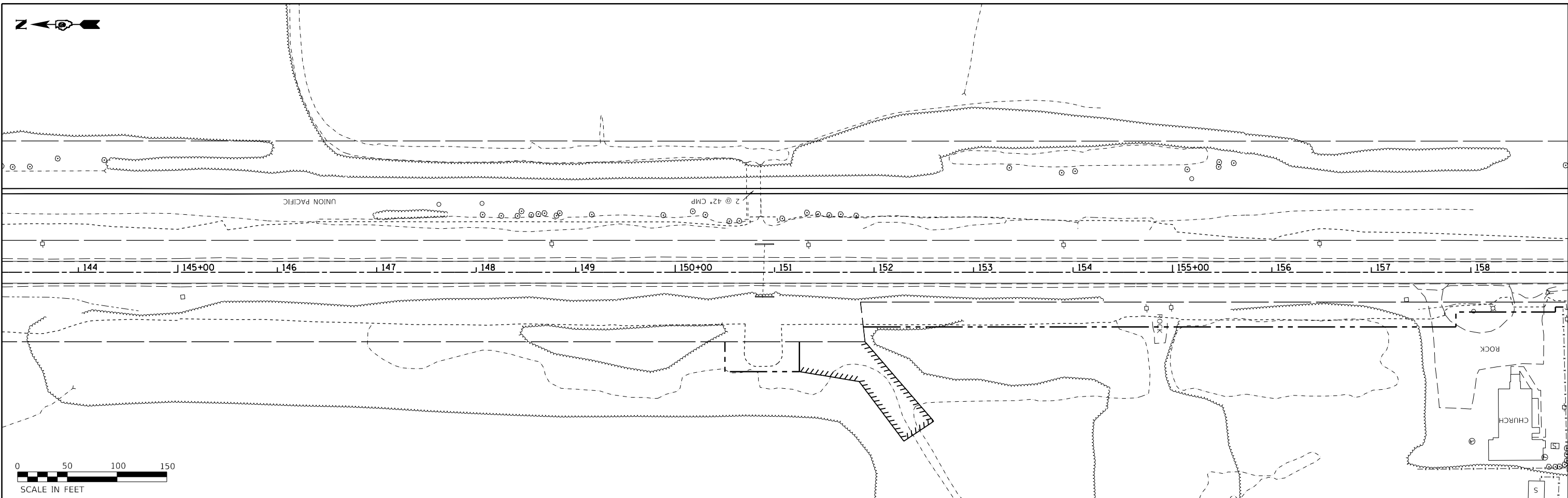
MODEL: Default
 FILE: \\s:\p\pub\baronm.dwg
 PROJECT: 78574\CADD\Drawings\DOT_Offices\Drawings\9\Projects\78574\CADD\Drawings\78754_shtc-rlb.dwg

USER NAME = maesbl	DESIGNED -	REVISED -
	DRAWN -	REVISED -
PLOT SCALE = 100.0000' / in.	CHECKED -	REVISED -
PLOT DATE = 8/26/2019	DATE -	REVISED -

STATE OF ILLINOIS
DEPARTMENT OF TRANSPORTATION

IL 37				
SCALE:	SHEET	OF	SHEETS	STA. TO STA.

F.A.S. RTE.	SECTION	COUNTY	TOTAL SHEETS	SHEET NO.
2862	(41-8,1,2) TR-1	JEFFERSON	22	6
CONTRACT NO. 78754				
ILLINOIS FED. AID PROJECT				



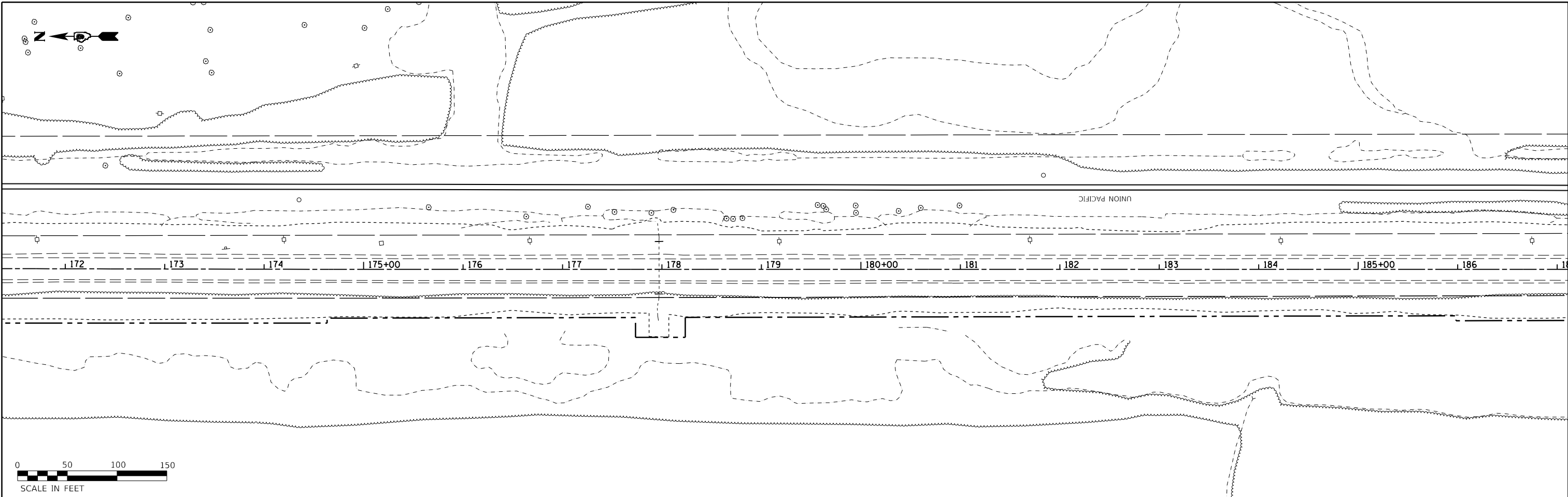
MODEL: Default
 FILE: \\s:\pub\baronm\dat\illinois\pww\DOT\Documents\DOT_Offices\District_9\projects\2862\FAS\CAD\Drawings\2862_78754_sht-elln.dwg

USER NAME = maesdt	DESIGNED -	REVISED -
	DRAWN -	REVISED -
PLOT SCALE = 100.0000' / in.	CHECKED -	REVISED -
PLOT DATE = 8/26/2019	DATE -	REVISED -

STATE OF ILLINOIS
DEPARTMENT OF TRANSPORTATION

IL 37				
SCALE:	SHEET	OF	SHEETS	STA. TO STA.

F.A.S. RTE.	SECTION	COUNTY	TOTAL SHEETS	SHEET NO.
2862	(41-8,1,2) TR-1	JEFFERSON	22	7
CONTRACT NO. 78754				
ILLINOIS FED. AID PROJECT				



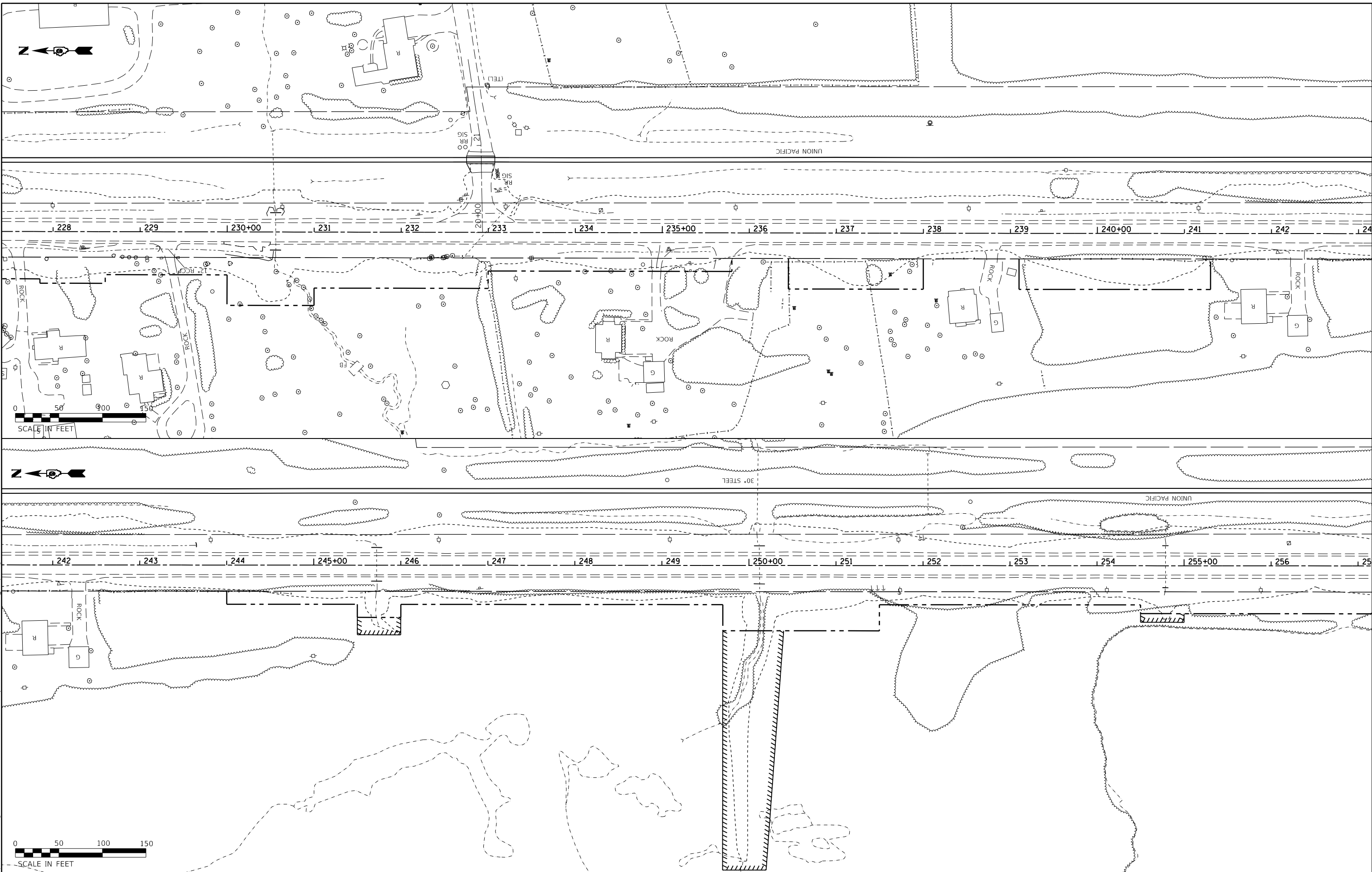
MODEL: Default
 FILE: \\s:\p\pub\baronm.dwg
 PROJECT: 7852\0\CAD\DATA\Documents\DOT Office\Drawings\7852\0\CAD\DATA\Drawings\78754_shtc-81b.dwg

USER NAME = maesbt	DESIGNED -	REVISED -
PLOT SCALE = 100.0000' / in.	DRAWN -	REVISED -
PLOT DATE = 8/26/2019	CHECKED -	REVISED -
	DATE -	REVISED -

STATE OF ILLINOIS
DEPARTMENT OF TRANSPORTATION

SCALE:		SHEET OF SHEETS		STA.	TO STA.
		IL 37			

F.A.S. RTE.	SECTION	COUNTY	TOTAL SHEETS	SHEET NO.
2862	(41-8,1,2) TR-1	JEFFERSON	22	8
CONTRACT NO. 78754				
ILLINOIS FED. AID PROJECT				



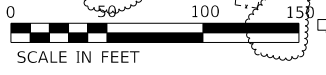
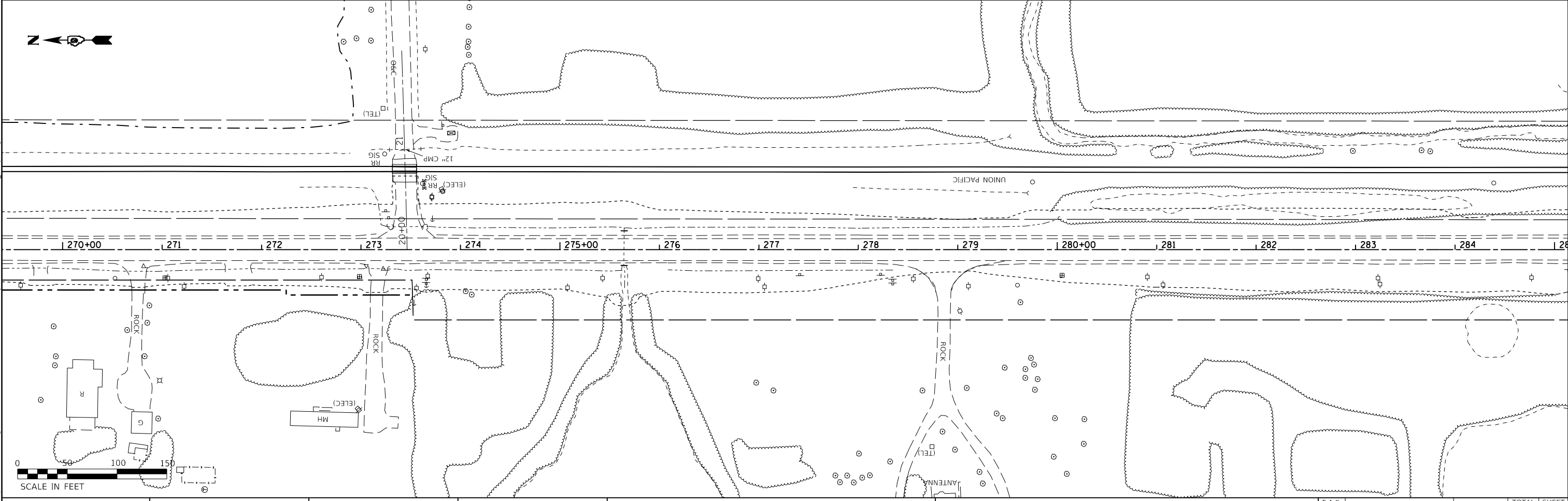
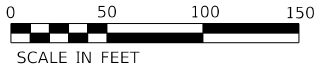
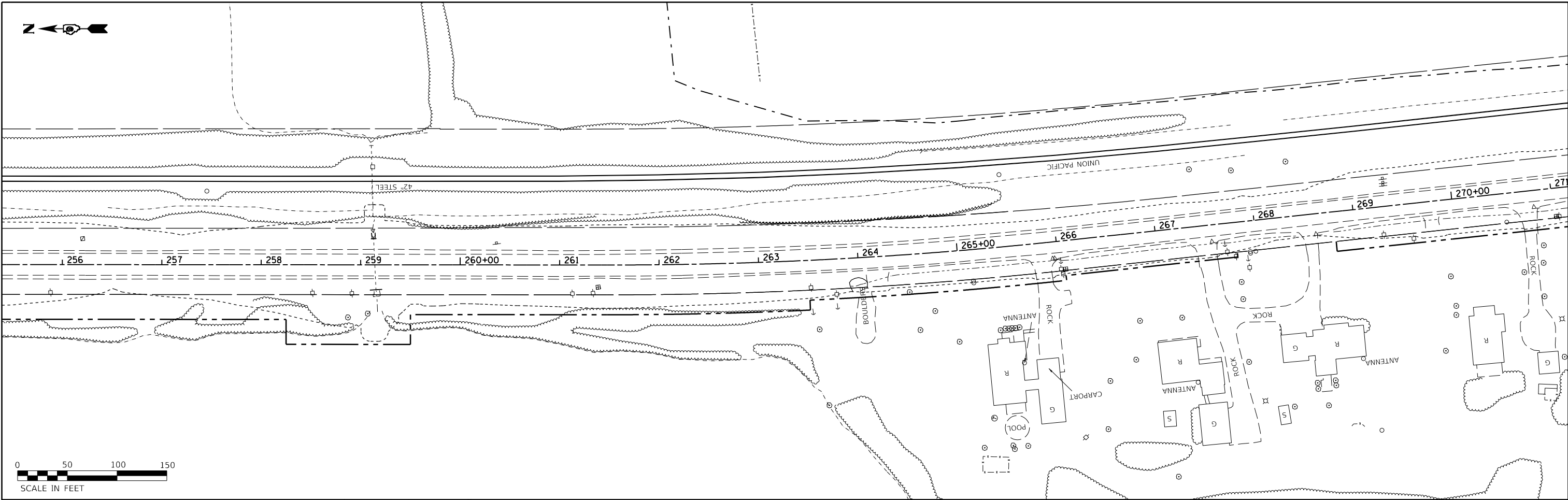
MODEL: Default
 FILE: \\s:\p\barroom.dwg
 PROJECT: 78574\CADD\Drawings\DOT_Offices\Drawings\9\Project\78574\CADD\Drawings\78754_shtc.dwg

USER NAME = maesol	DESIGNED -	REVISED -
PLOT SCALE = 100.0000' / in.	DRAWN -	REVISED -
PLOT DATE = 8/26/2019	CHECKED -	REVISED -
	DATE -	REVISED -

STATE OF ILLINOIS
DEPARTMENT OF TRANSPORTATION

IL 37				
SCALE:	SHEET	OF	SHEETS	STA. TO STA.

F.A.S. RTE.	SECTION	COUNTY	TOTAL SHEETS	SHEET NO.
2862	(41-8,1,2) TR-1	JEFFERSON	22	10
CONTRACT NO. 78754				
ILLINOIS FED. AID PROJECT				



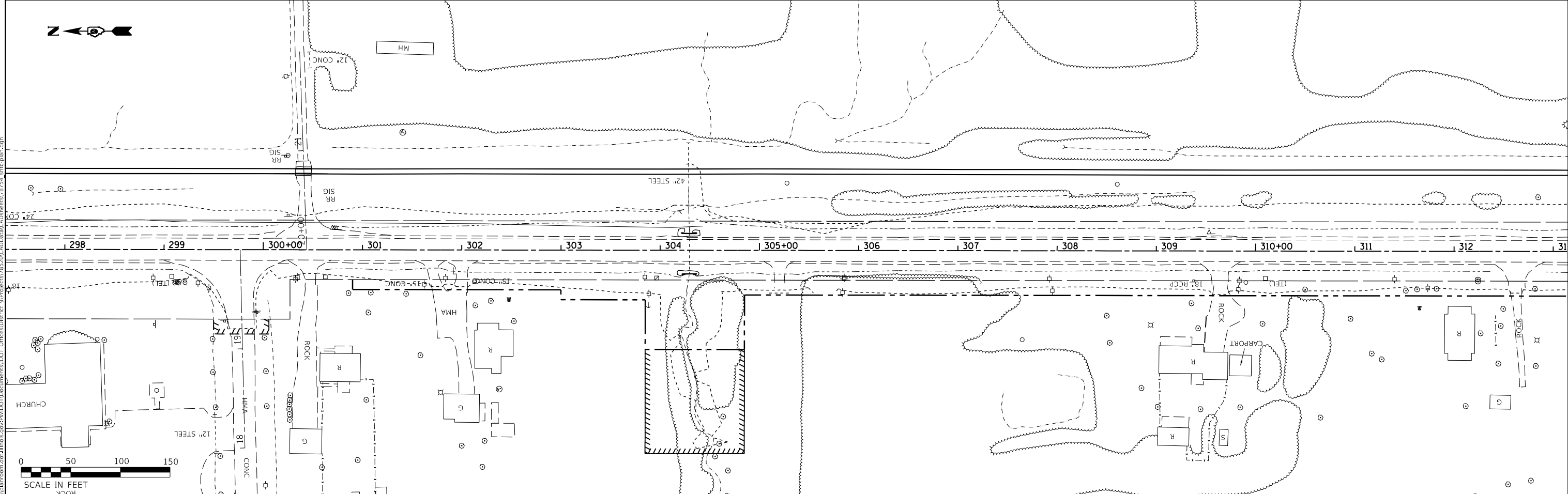
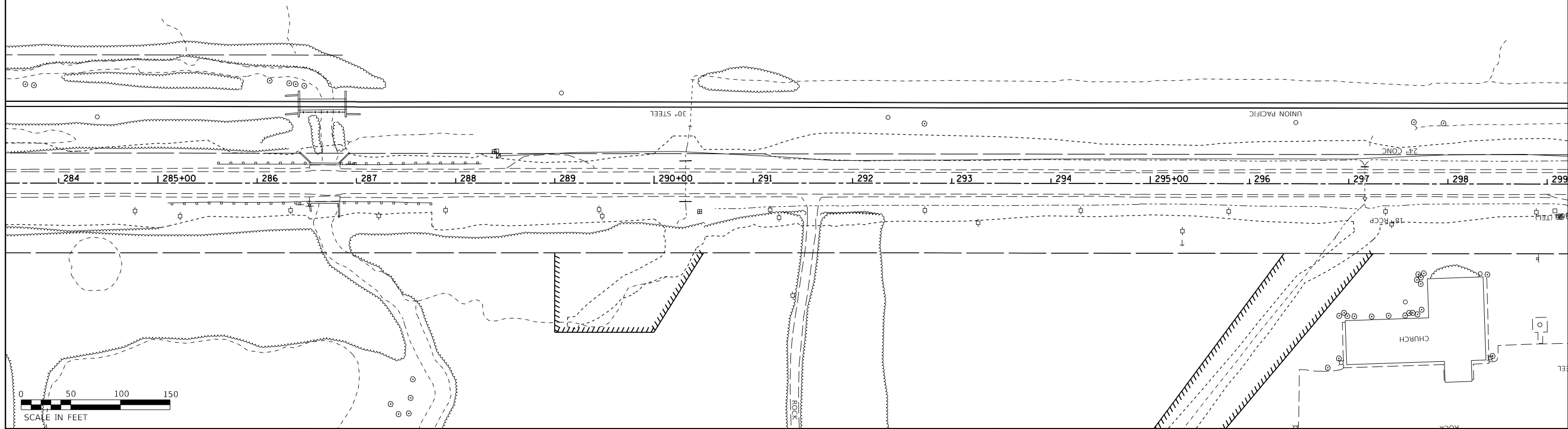
MODEL: Default
 FILE: h:\a\c\p\pub\baronm.dwg
 PROJECT: 78520\000\baronm\DOT_0\Office\Drawings\9\Project\78520\000\baronm\CAD\baronm\78754_snc-rlb.dwg

USER NAME = maesbl	DESIGNED -	REVISED -
PLOT SCALE = 100.0000' / in.	DRAWN -	REVISED -
PLOT DATE = 8/26/2019	CHECKED -	REVISED -
	DATE -	REVISED -

**STATE OF ILLINOIS
DEPARTMENT OF TRANSPORTATION**

IL 37	
SCALE:	SHEET OF SHEETS STA. TO STA.

F.A.S. RTE.	SECTION	COUNTY	TOTAL SHEETS	SHEET NO.
2862	(41-8,1,2) TR-1	JEFFERSON	22	11
CONTRACT NO. 78754				
		ILLINOIS	FED. AID PROJECT	



MODEL: Default
 FILE: \\snp\baron\04a\illink\proj\WIDOT\Documents\IDOT_Offices\District 9\Projects\8852\CAD\Drawings\8852\8852_8852.dwg
 PLOT DATE: 8/26/2019

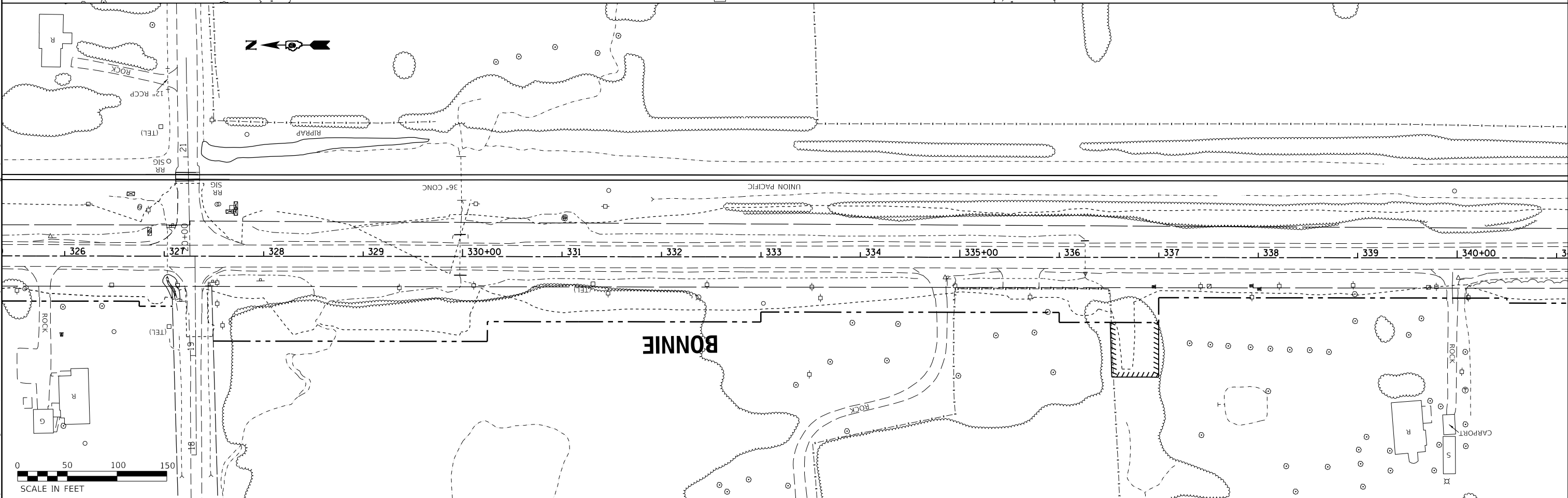
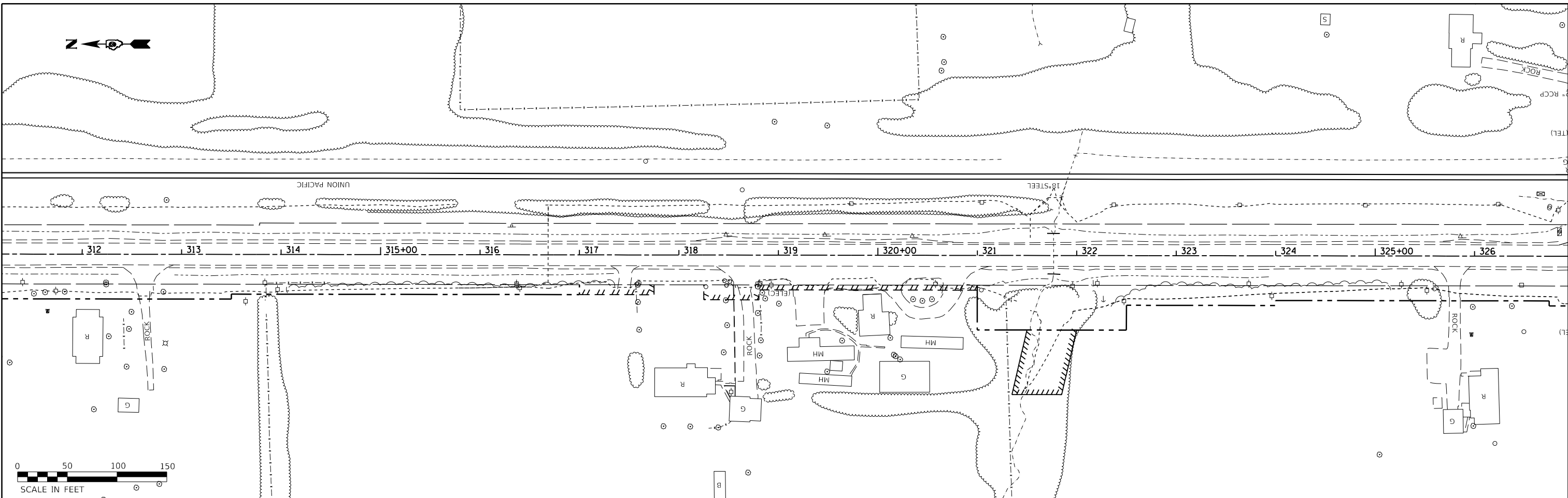
USER NAME = maesdt	DESIGNED -	REVISED -
PLOT SCALE = 100.0000' / in.	DRAWN -	REVISED -
PLOT DATE = 8/26/2019	CHECKED -	REVISED -
	DATE -	REVISED -

**STATE OF ILLINOIS
DEPARTMENT OF TRANSPORTATION**

IL 37

SCALE: SHEET OF SHEETS STA. TO STA.

F.A.S. RTE.	SECTION	COUNTY	TOTAL SHEETS	SHEET NO.
2862	(41-8,1,2) TR-1	JEFFERSON	22	12
CONTRACT NO. 78754				
ILLINOIS FED. AID PROJECT				



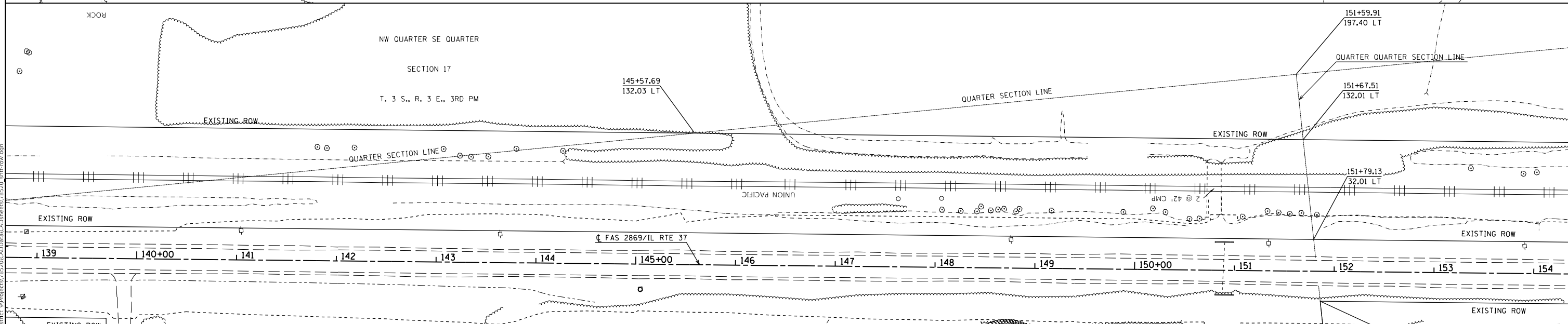
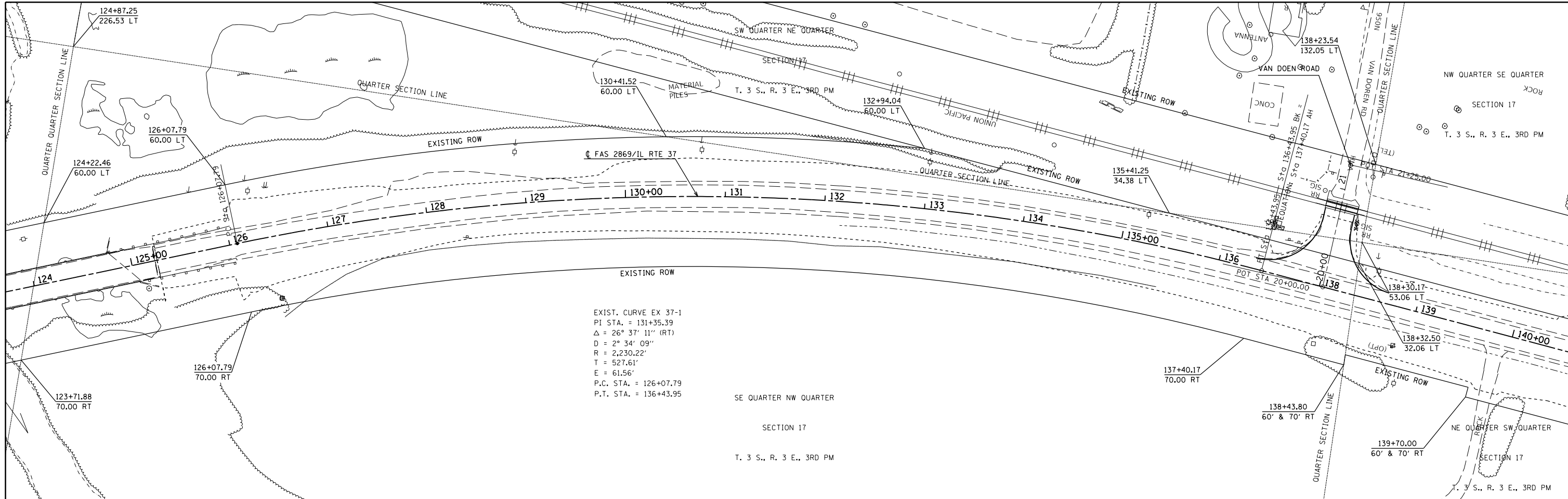
MODEL: Default
 FILE: \\nas01c.psu.edu\pub\baronm.d\at\illinois\dot\Documents\DOT_Offices\District_9\Projects\852\0\CADD\Drawings\852\754_shec-rlb01.dwg

USER NAME = maesdt	DESIGNED -	REVISED -
PLOT SCALE = 100.0000' / in.	DRAWN -	REVISED -
PLOT DATE = 8/26/2019	CHECKED -	REVISED -
	DATE -	REVISED -

STATE OF ILLINOIS
DEPARTMENT OF TRANSPORTATION

SCALE:		SHEET	OF	SHEETS	STA.	TO STA.

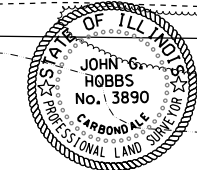
F.A.S. RTE.	SECTION	COUNTY	TOTAL SHEETS	SHEET NO.
2862	(41-8,1,2) TR-1	JEFFERSON	22	13
CONTRACT NO. 78754				
		ILLINOIS	FED. AID PROJECT	



COORDINATE DATA

PT ID	NORTHING	EASTING
JH53	581375.15	821892.37
JH54	581374.92	821932.63
JH197	581440.65	821900.36
JH198	581444.28	821870.58
JH199	581518.73	821879.67
JH200	581515.10	821907.47
JH202	581375.06	821907.47
JH316	581385.94	821853.39
JH317	581348.54	821788.38
JH318	581316.34	821804.59
JH319	581375.48	821835.20

PARCEL #	OWNER NAME	PURPOSE	ACREAGE
051	DARRELL & TERI WIGGINS	P.E./R.O.W.	0.058±/0.052±
054	MARK & DEBRA SMITH	P.E./R.O.W.	0.223±/0.441±



JOHN G. HOBBS
 ILLINOIS PROFESSIONAL LAND SURVEYOR
 Current license expires 11/2020.
 This professional service conforms to the current Illinois minimum standards for a boundary survey.

USER NAME = maesbl	DESIGNED -	REVISED -
	DRAWN -	REVISED -
PLOT SCALE = 100,0000' / in.	CHECKED -	REVISED -
PLOT DATE = 8/26/2019	DATE -	REVISED -

**STATE OF ILLINOIS
 DEPARTMENT OF TRANSPORTATION**

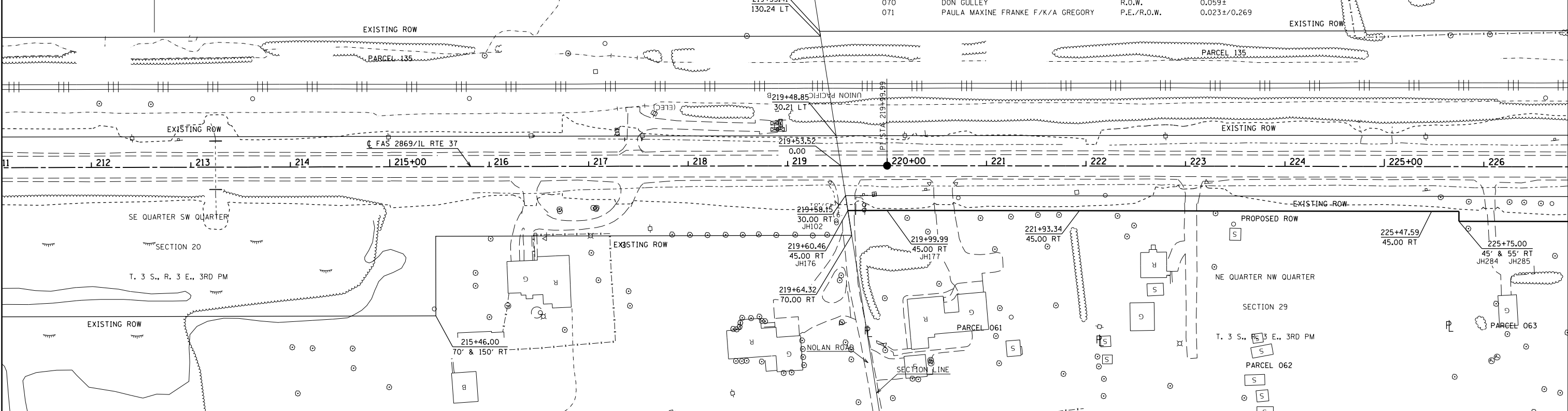
SCALE: 1" = 100'	SHEET 1 OF 8 SHEETS	IL 37 ROW	F.A.S. RTE. 2862	SECTION (41-8,1,2) TR-1	COUNTY JEFFERSON	TOTAL SHEETS 22	SHEET NO. 15
------------------	---------------------	-----------	------------------	-------------------------	------------------	-----------------	--------------

IL RTE 37/BONNIE TO I-64	CONTRACT NO. 78754
R-99-005-16	ILLINOIS FED. AID PROJECT

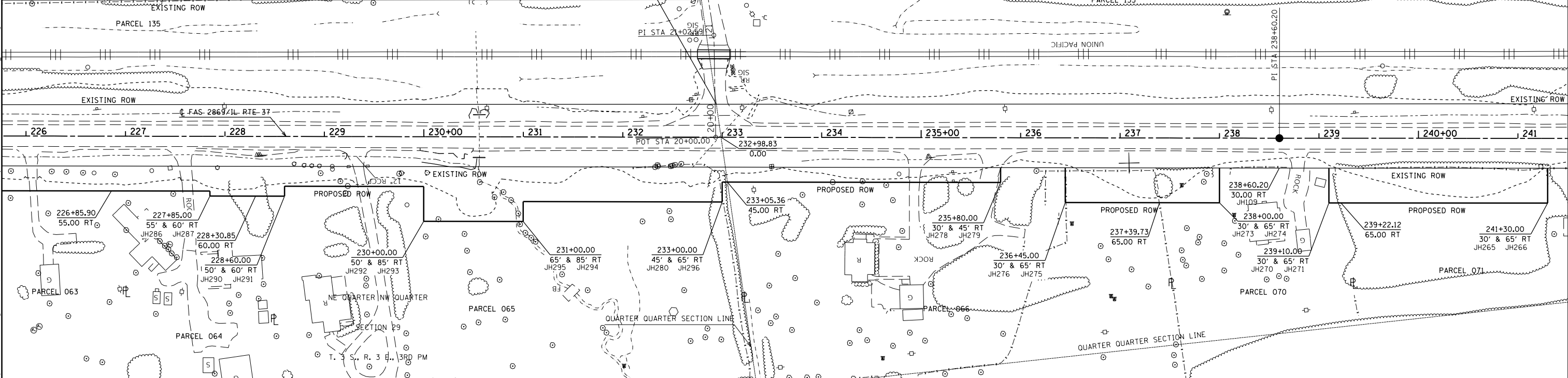
MODEL: Default
 FILE: \\s:\pub\baron\m.d.a.\illinois\p\p\DOT\Documents\DOT Office\Drawings\9\Projects\2862\CAD\DATA\CAD\chess\2862\0_cinf_row.dgn

COORDINATE DATA			COORDINATE DATA		
PT ID	NORTHING	EASTING	PT ID	NORTHING	EASTING
JH102	574651.77	821121.71			
JH176	574651.26	821106.54			
JH177	574612.19	821101.86			
JH284	574041.56	821031.10			
JH285	574042.79	821021.18			

PARCEL #	OWNER NAME	PURPOSE	ACREAGE
061	JAMES DENNIS & CYNTHIA DAWN FORD	R.O.W.	0.080±
062	DON GULLEY	R.O.W.	0.122±
063	JOHN & JUDITH ALLEN	R.O.W.	0.072±
064	ESTATE OF WILLIAM ALLEN	R.O.W.	0.088±
065	STEPHEN & KATHY KING	R.O.W.	0.374±
066	JIM & BETTY MORGAN	R.O.W.	0.169±
070	DON GULLEY	R.O.W.	0.059±
071	PAULA MAXINE FRANKE F/K/A GREGORY	P.E./R.O.W.	0.023±/0.269



COORDINATE DATA			COORDINATE DATA			COORDINATE DATA		
PT ID	NORTHING	EASTING	PT ID	NORTHING	EASTING	PT ID	NORTHING	EASTING
JH109	572764.26	820887.84	JH278	573042.35	820922.32	JH294	573525.47	820926.81
JH265	572496.45	820854.95	JH279	573044.19	820907.44	JH295	573523.01	820946.65
JH266	572500.72	821820.22	JH280	573322.07	820941.89	JH296	573324.53	820922.04
JH270	572714.81	820881.77	JH286	573834.38	820995.34			
JH271	572719.08	820847.03	JH287	573835.00	820990.38			
JH273	572824.02	820895.25	JH290	573759.34	820991.07			
JH274	572828.33	820860.52	JH291	573760.57	820981.15			
JH275	572982.15	820879.59	JH292	573620.40	820973.84			
JH276	572977.84	820914.33	JH293	573624.71	820939.11			



MODEL: Default
 FILE: \\blm\p\pub\barroom.dwg
 PROJECT: 78520\CADD\DATA\78520_CADD\78520_CADD.dwg
 DATE: 8/26/2019

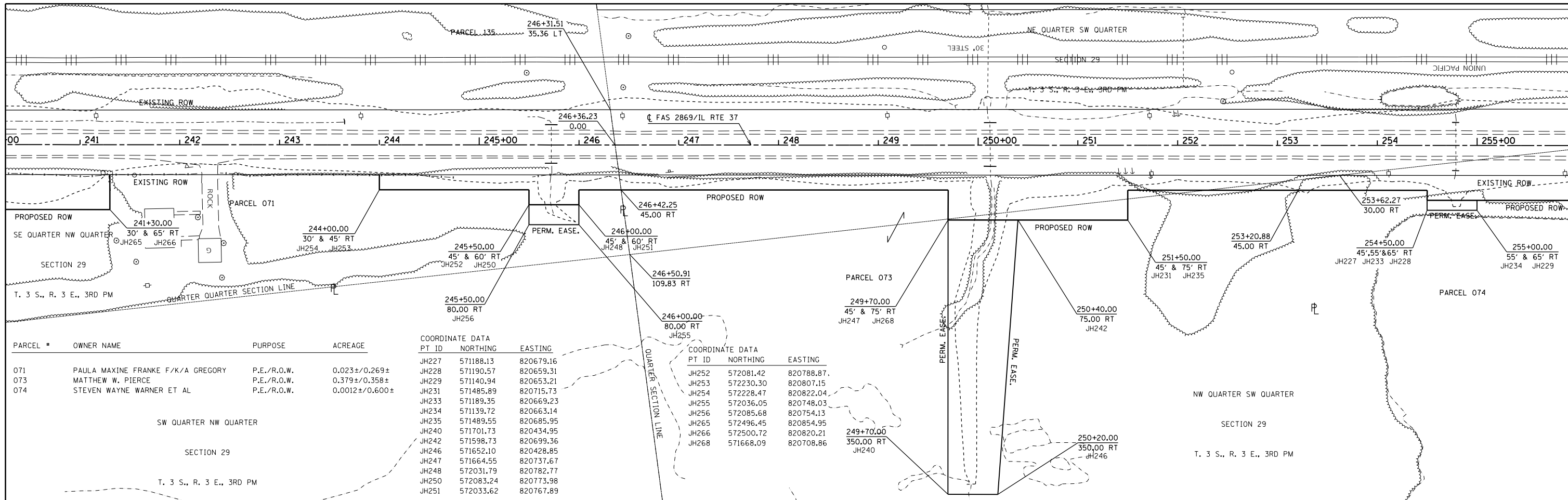
USER NAME = maesdt	DESIGNED -	REVISED -
PLOT SCALE = 100.0000' / in.	DRAWN -	REVISED -
PLOT DATE = 8/26/2019	CHECKED -	REVISED -
	DATE -	REVISED -

STATE OF ILLINOIS
DEPARTMENT OF TRANSPORTATION

SCALE: 1" = 100'	SHEET 4	OF 8 SHEETS	STA. 212+00.00	TO STA. 241+00.00
------------------	---------	-------------	----------------	-------------------

IL 37
ROW

F.A.S. RTE.	SECTION	COUNTY	TOTAL SHEETS	SHEET NO.
2862	(41-8.1.2) TR-1	JEFFERSON	22	18
IL RTE 37/BONNIE TO I-64		CONTRACT NO. 78754		
R-99-005-16	ILLINOIS	FED. AID PROJECT		



PARCEL #	OWNER NAME	PURPOSE	ACREAGE
071	PAULA MAXINE FRANKE F/K/A GREGORY	P.E./R.O.W.	0.023±/0.269±
073	MATTHEW W. PIERCE	P.E./R.O.W.	0.379±/0.358±
074	STEVEN WAYNE WARNER ET AL	P.E./R.O.W.	0.0012±/0.600±

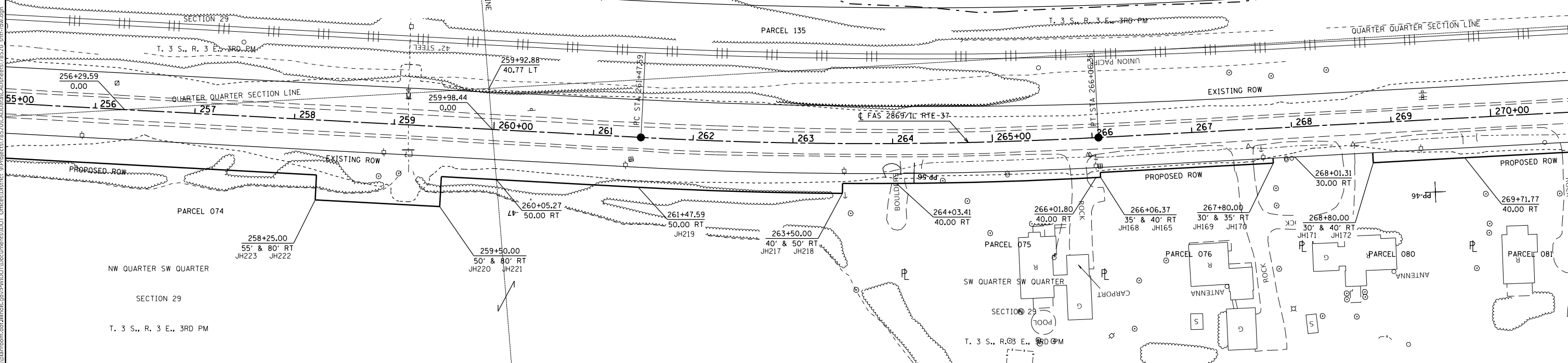
COORDINATE DATA		
PT ID	NORTHING	EASTING
JH227	571188.13	820679.16
JH228	571190.57	820659.31
JH229	571140.94	820653.21
JH231	571485.89	820715.73
JH233	571189.35	820669.23
JH234	571139.72	820663.14
JH235	571489.55	820685.95
JH240	571701.73	820434.95
JH242	571598.73	820699.36
JH246	571652.10	820428.85
JH247	571664.55	820737.67
JH248	572031.79	820782.77
JH250	572083.24	820773.98
JH251	572033.62	820767.89

COORDINATE DATA		
PT ID	NORTHING	EASTING
JH252	572081.42	820788.87
JH253	572230.30	820807.15
JH254	572228.47	820822.04
JH255	572036.05	820748.03
JH256	572085.68	820754.13
JH265	572496.45	820854.95
JH266	572500.72	820820.21
JH268	571668.09	820708.86

PARCEL #	OWNER NAME	PURPOSE	ACREAGE
074	STEVEN WAYNE WARNER ET AL	P.E./R.O.W.	0.012±/0.600±
075	STEVEN & REBECCA WARNER	R.O.W.	0.046±
076	ARLINE, THOMAS DARE & NANCY GERMANN	R.O.W.	0.021±
080	NANCY JEAN GERMANN	R.O.W.	0.021±
081	RYAN SELLERS & KAYLA SHERMAN	R.O.W.	0.041±

COORDINATE DATA		
PT ID	NORTHING	EASTING
JH165	570033.36	820567.43
JH168	570033.29	820572.43
JH169	569859.67	820569.89
JH170	569859.60	820574.89
JH171	569759.61	820573.42
JH172	569759.75	820563.42
JH217	570291.83	820579.00
JH218	570292.58	820569.03
JH219	570496.35	820589.16
JH220	570692.47	820613.25

COORDINATE DATA		
PT ID	NORTHING	EASTING
JH221	570696.12	820583.47
JH222	570820.19	820598.71
JH223	570817.14	820623.52



MODEL: Default
 FILE: h:\a\c\p\pub\barroom.dwg
 PROJECT: 82620\CD\Drawings\CD\Drawings\82620_shtf_row.dwg

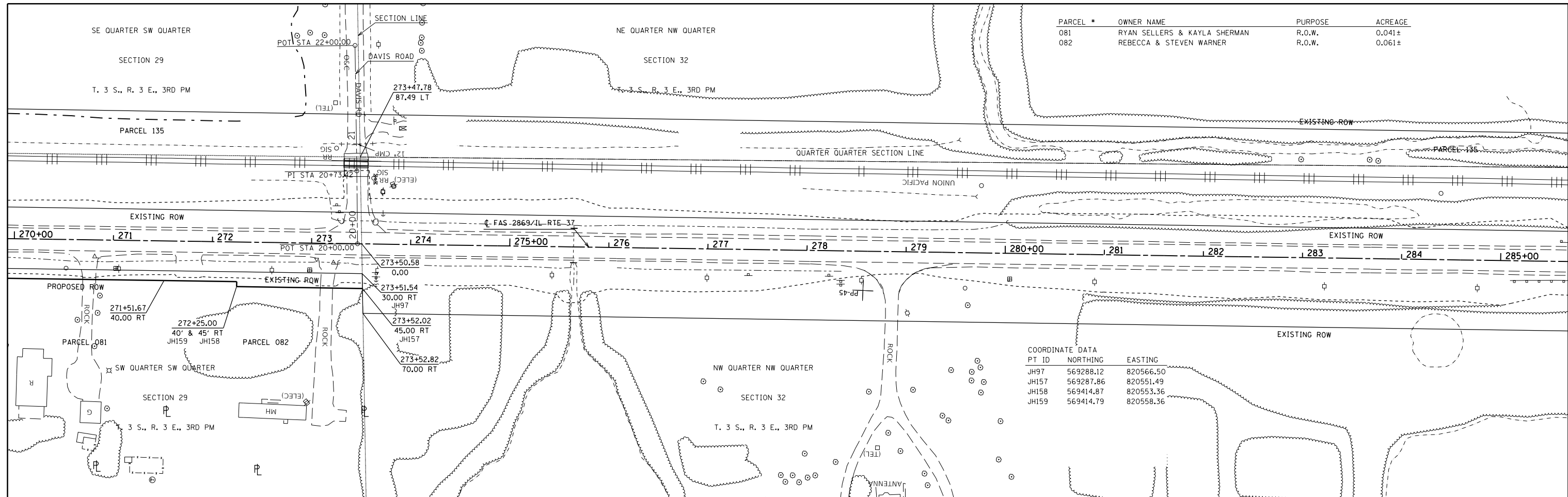
USER NAME = maesbl	DESIGNED -	REVISED -
	DRAWN -	REVISED -
PLOT SCALE = 100,0000' / in.	CHECKED -	REVISED -
PLOT DATE = 8/26/2019	DATE -	REVISED -

**STATE OF ILLINOIS
 DEPARTMENT OF TRANSPORTATION**

**IL 37
 ROW**

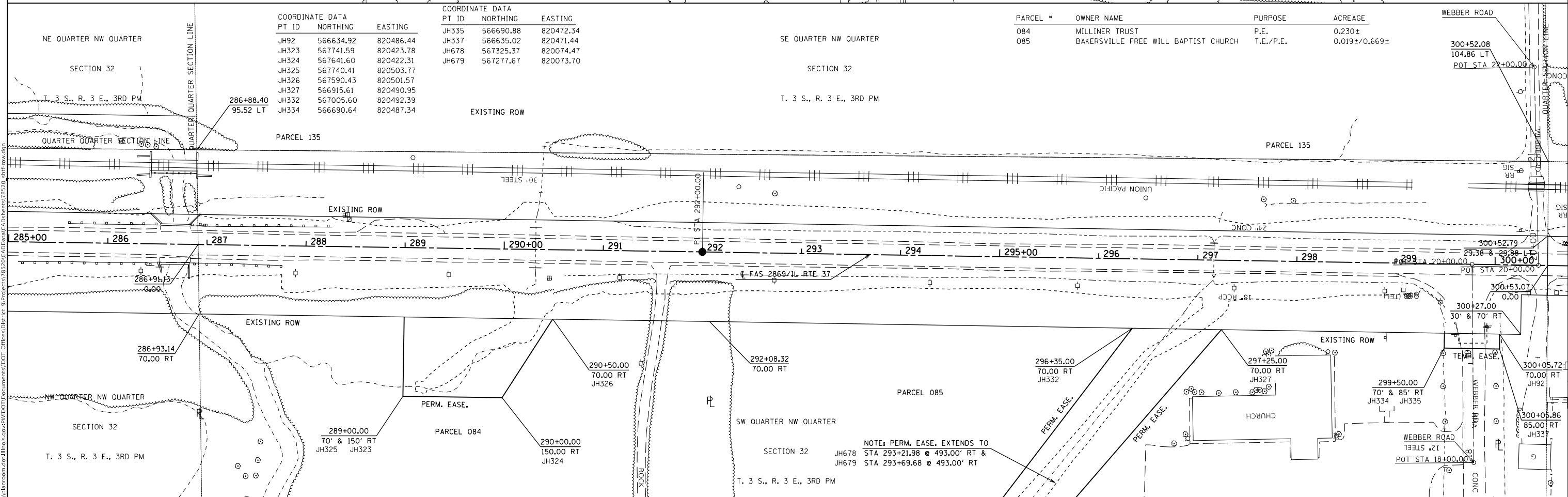
SCALE: 1" = 100' SHEET 5 OF 8 SHEETS STA. 241+00.00 TO STA. 270+00.00

F.A.S. RTE. 2862	SECTION (41-8,1,2) TR-1	COUNTY JEFFERSON	TOTAL SHEETS 22	SHEET NO. 19
IL RTE 37/BONNIE TO I-64		CONTRACT NO. 78754		
R-99-005-16 ILLINOIS FED. AID PROJECT				



PARCEL #	OWNER NAME	PURPOSE	ACREAGE
081	RYAN SELLERS & KAYLA SHERMAN	R.O.W.	0.041±
082	REBECCA & STEVEN WARNER	R.O.W.	0.061±

COORDINATE DATA		
PT ID	NORTHING	EASTING
JH97	569288.12	820566.50
JH157	569287.86	820551.49
JH158	569414.87	820553.36
JH159	569414.79	820558.36



COORDINATE DATA		
PT ID	NORTHING	EASTING
JH92	566634.92	820486.44
JH323	567741.59	820423.78
JH324	567641.60	820422.31
JH325	567740.41	820503.77
JH326	567590.43	820501.57
JH327	566915.61	820490.95
JH332	567005.60	820492.39
JH334	566690.64	820487.34

COORDINATE DATA		
PT ID	NORTHING	EASTING
JH335	566690.88	820472.34
JH337	566635.02	820471.44
JH678	567325.37	820074.47
JH679	567277.67	820073.70

PARCEL #	OWNER NAME	PURPOSE	ACREAGE
084	MILLINER TRUST	P.E.	0.230±
085	BAKERSVILLE FREE WILL BAPTIST CHURCH	T.E./P.E.	0.019±/0.669±

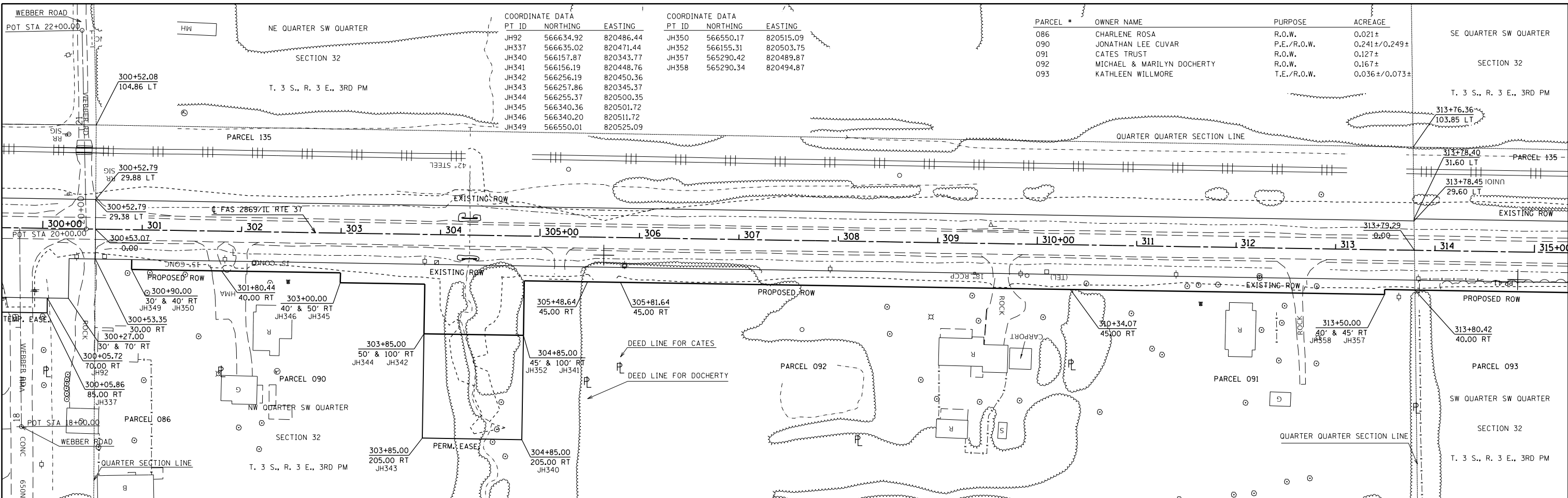
MODEL: Default
 FILE: \\s:\pub\baronm.dwg
 PROJECT: 78520\CAD\baronm.dwg
 OFFICE: 78520\CAD\baronm.dwg

USER NAME = maesbl	DESIGNED -	REVISED -
PLOT SCALE = 100.0000' / in.	DRAWN -	REVISED -
PLOT DATE = 8/26/2019	CHECKED -	REVISED -
	DATE -	REVISED -

**STATE OF ILLINOIS
DEPARTMENT OF TRANSPORTATION**

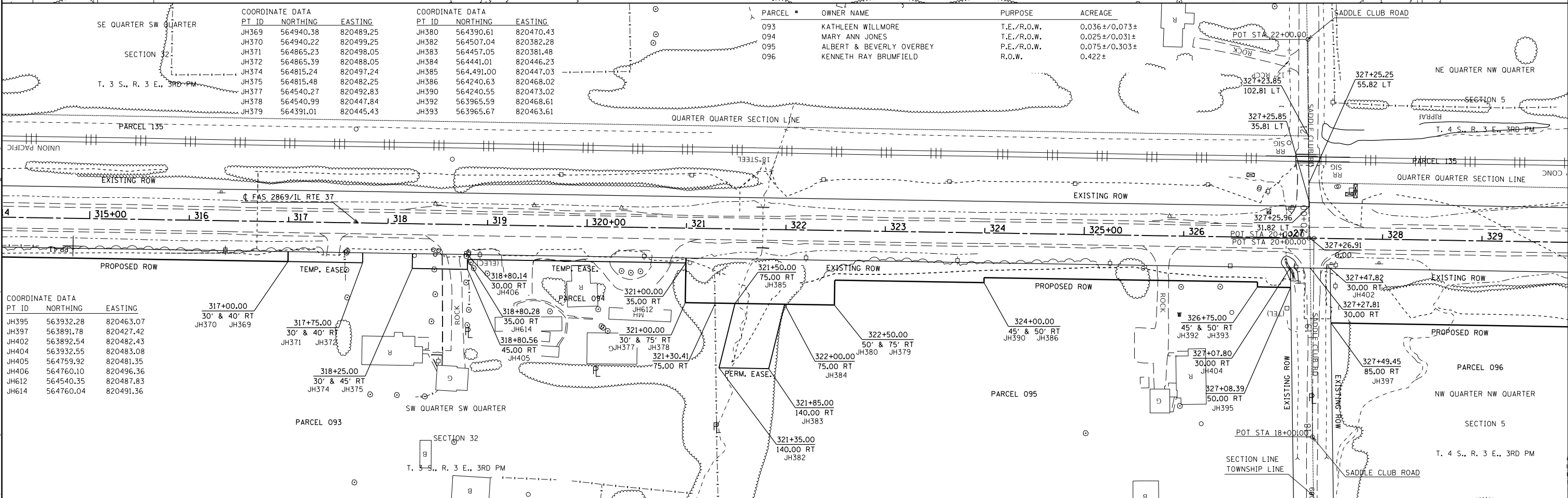
**IL 37
ROW**
 SCALE: 1" = 100'
 SHEET 6 OF 8 SHEETS
 STA. 270+00.00 TO STA. 300+00.00

F.A.S. RTE.	SECTION	COUNTY	TOTAL SHEETS	SHEET NO.
2862	(41-8,1,2) TR-1	JEFFERSON	22	20
IL RTE 37/BONNIE TO I-64		CONTRACT NO. 78754		
R-99-005-16	ILLINOIS	FED. AID PROJECT		



COORDINATE DATA			COORDINATE DATA		
PT ID	NORTHING	EASTING	PT ID	NORTHING	EASTING
JH92	566634.92	820486.44	JH350	566550.17	820515.09
JH337	566635.02	820471.44	JH352	566155.31	820503.75
JH340	566157.87	820343.77	JH357	565290.42	820489.87
JH341	566156.19	820448.76	JH358	565290.34	820494.87
JH342	566256.19	820450.36			
JH343	566257.86	820345.37			
JH344	566255.37	820500.35			
JH345	566340.36	820501.72			
JH346	566340.20	820511.72			
JH349	566550.01	820525.09			

PARCEL #	OWNER NAME	PURPOSE	ACREAGE	
086	CHARLENE ROSA	R.O.W.	0.021±	SE QUARTER SW QUARTER
090	JONATHAN LEE CUVAR	P.E./R.O.W.	0.241±/0.249±	
091	CATES TRUST	R.O.W.	0.127±	SECTION 32
092	MICHAEL & MARILYN DOCHERTY	R.O.W.	0.167±	
093	KATHLEEN WILLMORE	T.E./R.O.W.	0.036±/0.073±	T. 3 S., R. 3 E., 3RD PM



COORDINATE DATA			COORDINATE DATA		
PT ID	NORTHING	EASTING	PT ID	NORTHING	EASTING
JH369	564940.38	820489.25	JH380	564390.61	820470.43
JH370	564940.22	820499.25	JH382	564507.04	820382.28
JH371	564865.23	820498.05	JH383	564457.05	820381.48
JH372	564865.39	820488.05	JH384	564441.01	820446.23
JH374	564815.24	820497.24	JH385	564491.00	820447.03
JH375	564815.48	820482.25	JH386	564240.63	820468.02
JH377	564540.27	820492.83	JH390	564240.55	820473.02
JH378	564540.99	820447.84	JH392	563965.59	820468.61
JH379	564391.01	820445.43	JH393	563965.67	820463.61

PARCEL #	OWNER NAME	PURPOSE	ACREAGE	
093	KATHLEEN WILLMORE	T.E./R.O.W.	0.036±/0.073±	
094	MARY ANN JONES	T.E./R.O.W.	0.025±/0.031±	
095	ALBERT & BEVERLY OVERBEY	P.E./R.O.W.	0.075±/0.303±	
096	KENNETH RAY BRUMFIELD	R.O.W.	0.422±	

COORDINATE DATA		
PT ID	NORTHING	EASTING
JH395	563932.28	820463.07
JH397	563891.78	820427.42
JH402	563892.54	820482.43
JH404	563932.55	820483.08
JH405	564759.92	820481.35
JH406	564760.10	820496.36
JH612	564540.35	820487.83
JH614	564760.04	820491.36

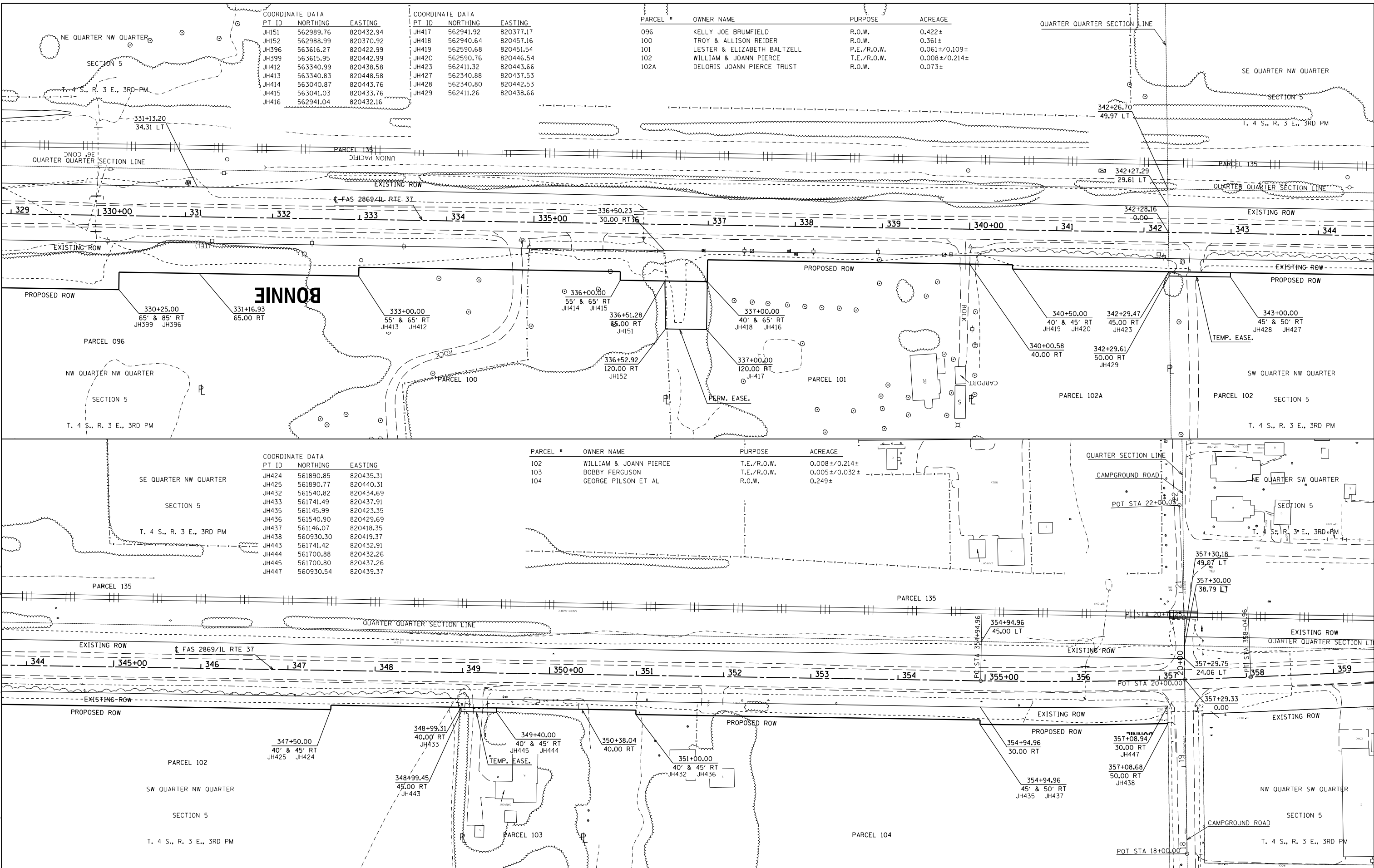
MODEL: Default
 FILE: \\pubshare\room_data\illinois\gov\PHUDOT\Documents\DOT_Offices\District_9\Projects\2862\2862\CAD\Drawings\2862_01.dwg
 PLOT DATE = 8/26/2019

USER NAME = maesbl	DESIGNED -	REVISED -
PLOT SCALE = 100,0000' / in.	DRAWN -	REVISED -
PLOT DATE = 8/26/2019	CHECKED -	REVISED -
	DATE -	REVISED -

STATE OF ILLINOIS
DEPARTMENT OF TRANSPORTATION

SCALE: 1" = 100'	SHEET 7 OF 8 SHEETS	STA. 300+00.00 TO STA. 329+00.00
------------------	---------------------	----------------------------------

F.A.S. RTE. 2862	SECTION (41-8,1,2) TR-1	COUNTY JEFFERSON	TOTAL SHEETS 22	SHEET NO. 21
IL RTE 37/BONNIE TO I-64		CONTRACT NO. 78754		
R-99-005-16	ILLINOIS	FED. AID PROJECT		



COORDINATE DATA			COORDINATE DATA		
PT ID	NORTHING	EASTING	PT ID	NORTHING	EASTING
JH151	562989.76	820432.94	JH417	562941.92	820377.17
JH152	562988.99	820370.92	JH418	562940.64	820457.16
JH396	563616.27	820422.99	JH419	562590.68	820451.54
JH399	563615.95	820442.99	JH420	562590.76	820446.54
JH412	563340.99	820438.58	JH423	562411.32	820443.66
JH413	563340.83	820448.58	JH427	562340.88	820437.53
JH414	563040.87	820443.76	JH428	562340.80	820442.53
JH415	563041.03	820433.76	JH429	562411.26	820438.66
JH416	562941.04	820432.16			

PARCEL #	OWNER NAME	PURPOSE	ACREAGE
096	KELLY JOE BRUMFIELD	R.O.W.	0.422±
100	TROY & ALLISON REIDER	R.O.W.	0.361±
101	LESTER & ELIZABETH BALTZELL	P.E./R.O.W.	0.061±/0.109±
102	WILLIAM & JOANN PIERCE	T.E./R.O.W.	0.008±/0.214±
102A	DELOUIS JOANN PIERCE TRUST	R.O.W.	0.073±

COORDINATE DATA		
PT ID	NORTHING	EASTING
JH424	561890.85	820435.31
JH425	561890.77	820440.31
JH432	561540.82	820434.69
JH433	561741.49	820437.91
JH435	561145.99	820423.35
JH436	561540.90	820429.69
JH437	561146.07	820418.35
JH438	560930.30	820419.37
JH443	561741.42	820432.91
JH444	561700.88	820432.26
JH445	561700.80	820437.26
JH447	560930.54	820439.37

PARCEL #	OWNER NAME	PURPOSE	ACREAGE
102	WILLIAM & JOANN PIERCE	T.E./R.O.W.	0.008±/0.214±
103	BOBBY FERGUSON	T.E./R.O.W.	0.005±/0.032±
104	GEORGE PILSON ET AL	R.O.W.	0.249±

MODEL: Default
 FILE: \\miller\public\miller\p001\p001\Documents\DOT - Office\Drawings - 9\Projects\2862\2862\CADD\2862\CAD\sheet\2862_28.sxd
 PROJECT: 2862
 SHEET: 8 OF 8

USER NAME = maesbl	DESIGNED -	REVISED -
	DRAWN -	REVISED -
PLOT SCALE = 100.0000' / in.	CHECKED -	REVISED -
PLOT DATE = 8/26/2019	DATE -	REVISED -

**STATE OF ILLINOIS
DEPARTMENT OF TRANSPORTATION**

IL 37 ROW		
SCALE: 1" = 100'	SHEET 8 OF 8 SHEETS	STA. 329+00.00 TO STA. 358+00.00

F.A.S. RTE.	SECTION	COUNTY	TOTAL SHEETS	SHEET NO.
2862	(41-8,1,2) TR-1	JEFFERSON	22	22
IL RTE 37/BONNIE TO I-64		CONTRACT NO. 78754		
R-99-005-16	ILLINOIS	FED. AID PROJECT		