

11-08-2019 LETTING ITEM 073

FOR INDEX OF SHEETS, SEE SHEET NO. 2  
FOR INDEX OF HIGHWAY STANDARDS, SEE SHEET NO. 2

STATE OF ILLINOIS  
DEPARTMENT OF TRANSPORTATION

# PLANS FOR PROPOSED FEDERAL AID HIGHWAY

## BROOKFIELD AND CONGRESS PARK METRA STATION COVERED BICYCLE SHELTERS SECTION NO.: 17-00130-00-MS PROJECT NO.: DFKO(929) VILLAGE OF BROOKFIELD COOK COUNTY C-91-294-18

FAU ROUTE NO.	SECTION	COUNTY	TOTAL SHEETS	SHEET NO.
	17-00130-00-MS	COOK	13	1
ILLINOIS PROJECT DFKO(929)				
CONTRACT NO. 61G07				



LOCATION OF SECTION INDICATED THUS:

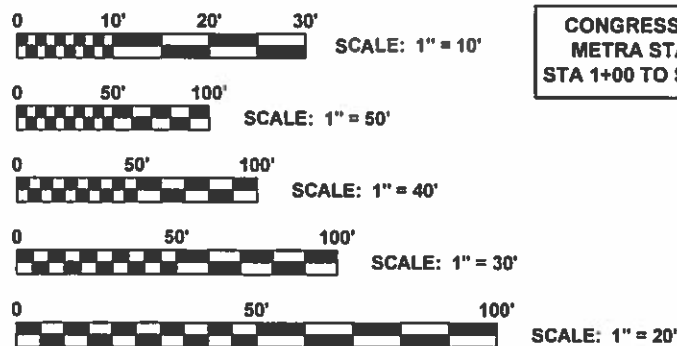
**TRAFFIC DATA**

ADT (2014) =  
POSTED SPEED LIMIT = 25 MPH  
DESIGN SPEED LIMIT = 25 MPH

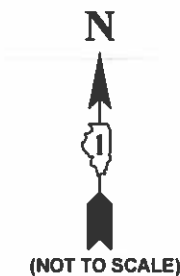
**DESIGN DESIGNATION**

MINOR COLLECTOR

PROJECT LOCATED IN THE  
VILLAGE OF BROOKFIELD



CONGRESS PARK  
METRA STATION  
STA 1+00 TO STA 2+88



BROOKFIELD  
METRA STATION  
STA 1+27 TO STA 1+65

STATE OF ILLINOIS  
ILLINOIS DEPARTMENT OF TRANSPORTATION  
DIVISION OF HIGHWAYS

APPROVED July 29 20 19  
VILLAGE OF BROOKFIELD, PRESIDENT

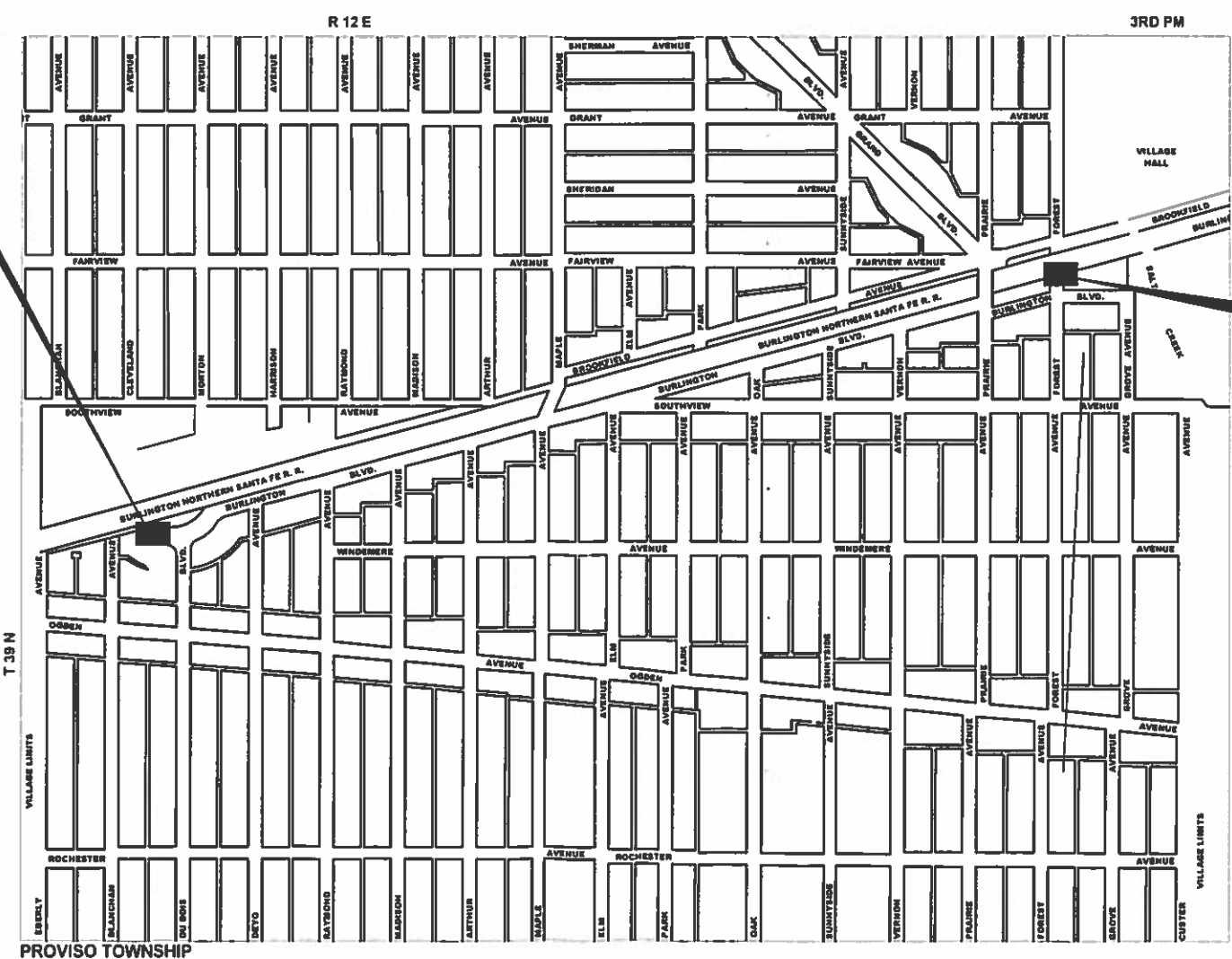
PASSED July 29 20 19  
DISTRICT ENGINEER OF LOCAL ROADS & STREETS

RELEASED FOR BID  
BASED ON LIMITED  
REVIEW August 16 20 19  
REGIONAL ENGINEER

PRINTED BY THE AUTHORITY OF THE STATE OF ILLINOIS



SIGNED: Derek S. Treichel  
DATE: 07-29-2019 LICENSE EXPIRES: 11-30-19



CONTRACT NO. 61G07

■ - AREA OF IMPROVEMENT  
GROSS LENGTH OF IMPROVEMENT = 226 FT = .04 MI  
NET LENGTH OF IMPROVEMENT = 226 FT = .04 MI



- ◆ Civil Engineers 9933 Roosevelt Road Westchester, IL, 60154-2780
- ◆ Municipal Consultants Phone: 708-865-0300
- ◆ Established 1911 www.ehancock.com

FEDERAL AID PROGRAM ENGINEER: CARMEN E. RAMOS, SCHAUMBURG, IL

## INDEX OF SHEETS

SHEET NO.	DESCRIPTION
1	COVER SHEET, LOCATION MAP
2	INDEX OF SHEETS, AND IDOT HIGHWAY STANDARDS
3	GENERAL NOTES
4	SUMMARY OF QUANTITIES
5-6	TYPICAL SECTIONS
7-8	REMOVAL PLANS
9-10	PROPOSED PLANS
11-12	JOB SPECIFIC DETAILS
13	TRAFFIC CONTROL AND PROTECTION FOR SIDE ROADS, INTERSECTIONS, AND DRIVEWAYS (TC-10)

## IDOT HIGHWAY STANDARDS

STANDARD NO.	DESCRIPTION
000001-07	STANDARD SYMBOLS, ABBREVIATIONS AND PATTERNS
280001-07	TEMPORARY EROSION CONTROL SYSTEMS
424001-11	PERPENDICULAR CURB RAMPS FOR SIDEWALKS
701501-06	URBAN LANE CLOSURE, 2-LANE, 2-WAY, UNDIVIDED
701701-10	URBAN LANE CLOSURE, MULTILANE INTERSECTION
701801-06	SIDEWALK, CORNER, OR CROSSWALK CLOSURE
701901-08	TRAFFIC CONTROL DEVICES

Drawing file: W:\Projects\_by\_Village\Brookfield\12519082 - Metro Bike Parking\Metro Index.dwg Jun 28, 2019 - 8:45am



100+ Years of Excellence  
 ♦ Civil Engineers  
 ♦ Municipal Consultants  
 ♦ Established 1911  
 9933 Roosevelt Road  
 Westchester, IL 60154-2780  
 Phone: 708-865-0300  
 www.ehancock.com

DESIGNED	-	REVISED	-
DRAWN	TG, SFB, DMM	REVISED	-
CHECKED	-	REVISED	-
DATE	6-28-19	REVISED	-

**STATE OF ILLINOIS  
DEPARTMENT OF TRANSPORTATION**

### INDEX OF SHEETS, AND IDOT HIGHWAY STANDARDS

SCALE: NONE    SHEET NO. 1 OF 1 SHEETS    STA. -    TO STA. -

F.A.U. RTE.	SECTION	COUNTY	TOTAL SHEETS	SHEET NO.
-	17-00130-00-MS	COOK	13	2
FED. ROAD DIST. NO. 1 ILLINOIS			CONTRACT NO. 61G07	
FED. AID PROJECT			E.H.E. PROJECT NO. 125-19-08280	

# GENERAL NOTES

## STANDARDS

ANY REFERENCE TO STANDARDS THROUGHOUT THE PLANS OR SPECIAL PROVISIONS SHALL BE INTERPRETED TO BE THE LATEST STANDARD OF THE ILLINOIS DEPARTMENT OF TRANSPORTATION AS SHOWN ON THE INDEX OF SHEETS IN THE PLANS. ALL CONSTRUCTION SHALL BE DONE IN ACCORDANCE WITH THE STANDARD SPECIFICATIONS FOR ROAD AND BRIDGE CONSTRUCTION ADOPTED APRIL 1, 2016. THE LATEST EDITION OF THE "ILLINOIS MANUAL ON UNIFORM TRAFFIC CONTROL DEVICES FOR STREETS AND HIGHWAYS," "THE STANDARD SPECIFICATIONS FOR WATER AND SEWER MAIN CONSTRUCTION IN ILLINOIS" JULY 2014 7TH EDITION, AND THE "DETAILS" IN THE PLANS AND THE "SPECIAL PROVISIONS" INCLUDED IN THE CONTRACT DOCUMENTS.

## UNDERGROUND UTILITIES

BEFORE STARTING ANY EXCAVATION, THE CONTRACTOR SHALL CALL "JULIE" AT 811 FOR FIELD LOCATIONS OF BURIED ELECTRICAL, TELEPHONE AND GAS FACILITIES. (48 HOURS NOTIFICATION IS REQUIRED).

THE LOCATIONS OF THE UNDERGROUND UTILITIES IF SHOWN ON THE PLANS HAVE BEEN OBTAINED BY FIELD SURVEYS AND SEARCHES OF AVAILABLE RECORDS. IT IS BELIEVED THAT DATA IS ESSENTIALLY CORRECT, BUT THE VILLAGE OF BROOKFIELD, THE ILLINOIS DEPARTMENT OF TRANSPORTATION AND/OR OTHER OFFICES AND AGENCIES ASSOCIATED WITH THE DEVELOPMENT OF THESE PLANS DO NOT GUARANTEE THEIR ACCURACY OR COMPLETENESS. THE CONTRACTOR WILL BE REQUIRED TO VERIFY THE EXACT LOCATION OF EACH FACILITY WITH THE UTILITY COMPANY, AND SHALL TAKE DUE CARE IN ALL PHASES OF THE CONSTRUCTION TO PROTECT ANY SUCH FACILITIES WHICH MAY BE AFFECTED BY THE WORK. ANY DAMAGE TO EXISTING UTILITIES SHALL BE REPAIRED.

THE CONTRACTOR SHALL COORDINATE CONSTRUCTION ACTIVITIES WITH UTILITY COMPANIES AND THE VILLAGE OF BROOKFIELD.

## TREE PROTECTION

EXISTING TREES AT PARKWAYS OUTSIDE OF CONSTRUCTION LIMITS SHALL REMAIN DURING THE CONSTRUCTION. ANY DAMAGE TO EXISTING TREES BY THE CONTRACTOR SHALL BE REPLACED IN KIND BY THE CONTRACTOR.

## OPEN EXCAVATIONS

THE CONTRACTOR SHALL NOT LEAVE ANY EXCAVATION NECESSARY FOR PAVEMENT PATCHES OR STRUCTURE ADJUSTMENTS OPEN OVERNIGHT. THE CONTRACTOR SHALL BE RESPONSIBLE FOR COMPLETELY BACKFILLING OR INSTALLING A PLATE OVER ALL EXCAVATIONS AT THE END OF EACH DAY.

## CONCRETE BREAKERS

WHEN REMOVING PAVEMENT AND/OR OTHER STRUCTURES, THE CONTRACTOR SHALL NOT USE ANY TYPE OF CONCRETE BREAKERS SUCH AS DROP HAMMERS, THAT MIGHT DAMAGE UNDERGROUND PUBLIC OR PRIVATE UTILITIES.

## SAW CUTTING

THE CONTRACTOR SHALL SAW CUT ASPHALT PAVEMENT AS INDICATED ON THE PLANS TO SEPARATE THE EXISTING PAVEMENT TO BE REMOVED BY APPROVED MEANS OR AN APPROVED CONCRETE SAW TO A DEPTH AS DIRECTED BY THE ENGINEER. SUITABLE GUIDELINES OR DEVICES SHALL BE USED TO ASSURE CUTTING A NEAT, STRAIGHT LINE AS SHOWN ON THE PLANS. CARE SHALL BE TAKEN BY THE CONTRACTOR AS NOT TO DAMAGE THE REMAINING PAVEMENT DIRECTLY ADJACENT TO THE PAVEMENT TO BE REMOVED. ANY DAMAGE TO THE EXISTING PAVEMENT RESULTING FROM PAVEMENT REMOVAL OPERATIONS SHALL BE REPAIRED.

## FIELD OFFICE

THE CONTRACTOR WILL NOT BE ALLOWED TO SET UP A YARD OR FIELD OFFICE ON STATE OR VILLAGE PROPERTY WITHOUT WRITTEN PERMISSION FROM THE ENGINEER.

Drawing file: W:\Projects\_by\_Village\Brookfield\12519082 - Metro Bike Parking\Details.dwg Aug 20, 2019 - 10:32am



◆ Civil Engineers  
◆ Municipal Consultants  
◆ Established 1911

9933 Roosevelt Road  
Westchester, IL 60154-2780  
Phone: 708-865-0300  
www.hancock.com

DESIGNED	- -	REVISED	-
DRAWN	- TG, SFB, DMM	REVISED	-
CHECKED	- -	REVISED	-
DATE	- 6-28-19	REVISED	-

**STATE OF ILLINOIS  
DEPARTMENT OF TRANSPORTATION**

### GENERAL NOTES

SCALE: NONE SHEET NO. 1 OF 1 SHEETS STA. - TO STA. -

F.A.U. RTE.	SECTION	COUNTY	TOTAL SHEETS	SHEET NO.
-	17-00130-00-MS	COOK	13	3
CONTRACT NO. 61G07				
FED. ROAD DIST. NO. 1 ILLINOIS				FED. AID PROJECT

E.H.E. PROJECT NO. 125-19-08280

Drawing file: W:\Projects\_by\_client\Branford\12519082 - Metro Bike Parking\Details.dwg Aug 20, 2019 - 10:47am

S.P.	S.I.	Code No.	Item	Unit	Total Quantity	Const. Type Code 0028 80%Federal 20%Local
		20200100	EARTH EXCAVATION	CU YD	50	50
		21101615	TOPSOIL FURNISH AND PLACE, 4"	SQ YD	60	60
		25200100	SODDING	SQ YD	60	60
		25200200	SUPPLEMENTAL WATERING	UNIT	5	5
		35101600	AGGREGATE BASE COURSE, TYPE B 4"	SQ YD	200	200
		42400200	PORTLAND CEMENT CONCRETE SIDEWALK 5 INCH	SQ FT	960	960
		42400300	PORTLAND CEMENT CONCRETE SIDEWALK 6 INCH	SQ FT	708	708
		42400800	DETECTABLE WARNINGS	SQ FT	10	10
		44000500	COMBINATION CURB AND GUTTER REMOVAL	FOOT	10	10
		44000600	SIDEWALK REMOVAL	SQ FT	660	660
		60604100	COMBINATION CONCRETE CURB AND GUTTER, TYPE B-6.12 (MODIFIED)	FOOT	10	10
	*	66900200	NON-SPECIAL WASTE DISPOSAL	CU YD	30	30
	*	66901001	REGULATED SUBSTANCES PRE-CONSTRUCTION PLAN	LSUM	1	1
	*	66901002	ON-SITE MONITORING OF REGULATED SUBSTANCES	CAL DA	1	1
	*	66901003	REGULATED SUBSTANCES FINAL CONSTRUCTION REPORT	LSUM	1	1
	*	66900530	SOIL DISPOSAL ANALYSIS	EACH	2	2
		67100100	MOBILIZATION	LSUM	1	1
		70102620	TRAFFIC CONTROL AND PROTECTION, STANDARD 701501	LSUM	1	1
		70102635	TRAFFIC CONTROL AND PROTECTION, STANDARD 701701	LSUM	1	1
		70102640	TRAFFIC CONTROL AND PROTECTION, STANDARD 701801	LSUM	1	1
	*	78008230	POLYUREA PAVEMENT MARKING LINE TYPE I - LINE 6"	FOOT	160	160
	*	78008250	POLYUREA PAVEMENT MARKING LINE TYPE I - LINE 12"	FOOT	250	250
	*	XX008686	BIKE SHELTER	EACH	4	4
	*	Z0003855	BICYCLE RACKS	EACH	10	10
	*	Z0048665	RAILROAD PROTECTIVE LIABILITY INSURANCE	LSUM	1	1
	*	XX009330	BICYCLE REPAIR STATION	EACH	2	2

**HANCOCK ENGINEERING**  
 6837 Yorkwood  
 Elmhurst, IL 60120  
 ♦ Civil Engineers  
 ♦ Municipal Consultants  
 ♦ Established 1911

9933 Roosevelt Road  
 Waukegan, IL 60154-2780  
 Phone: 708-665-0500  
 www.hancock.com

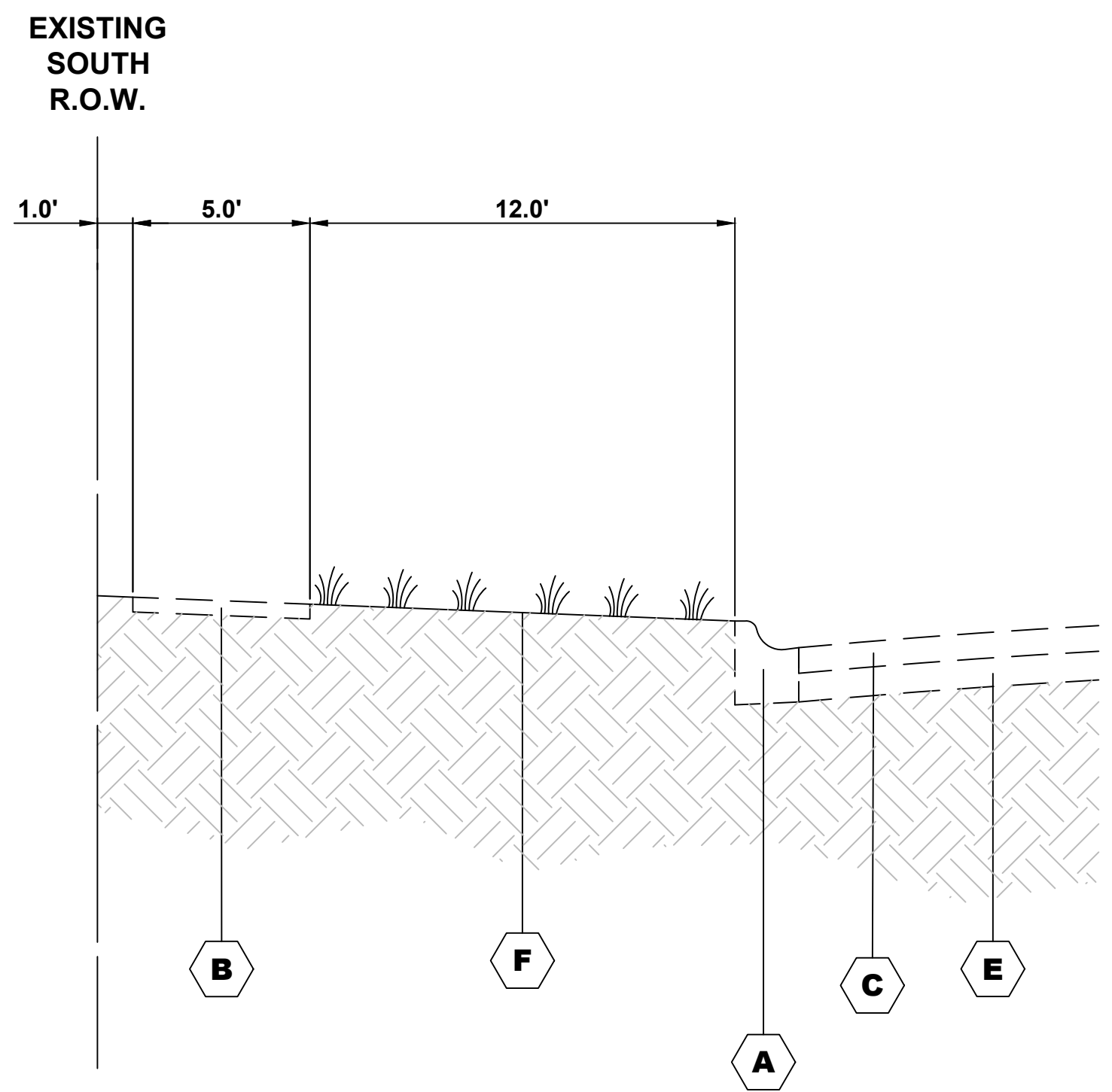
DESIGNED	- -	REVISED	- -
DRAWN	TG, SFB, DMM	REVISED	- -
CHECKED	- -	REVISED	- -
DATE	6-28-19	REVISED	- -

**STATE OF ILLINOIS  
 DEPARTMENT OF TRANSPORTATION**

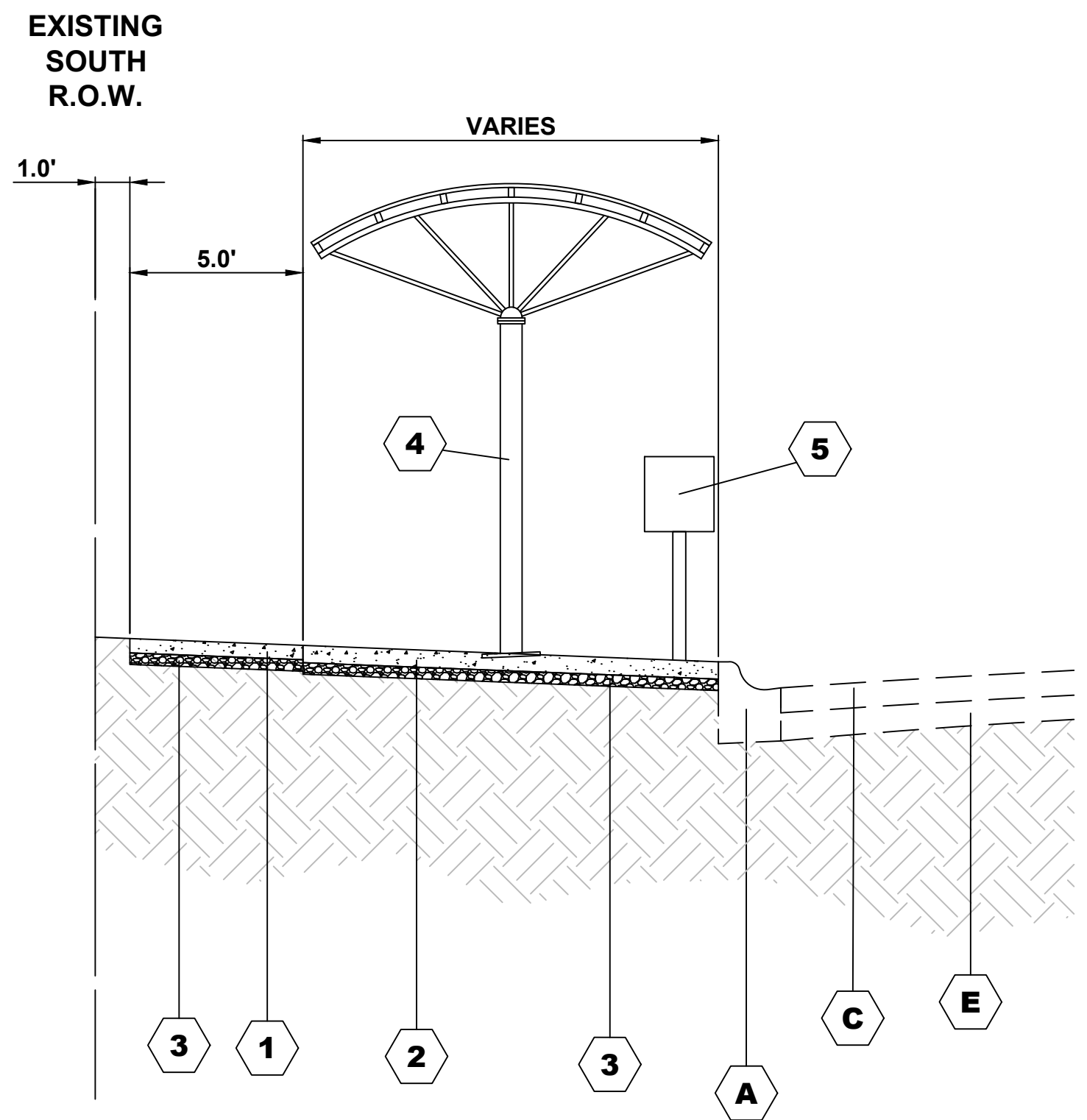
**SUMMARY OF QUANTITIES**

SCALE: NONE    SHEET NO. 1 OF 1 SHEETS    STA. -    TO STA. -

F.A.U. RTE.	SECTION	COUNTY	TOTAL SHEETS	SHEET NO.
-	17-00130-00-MS	COOK	13	4
FED. ROAD DIST. NO. 1   ILLINOIS			CONTRACT NO. 81G07	
FED. AID PROJECT			E.H.E. PROJECT NO. 125-19-08280	



**EXISTING TYPICAL SECTION**  
**CONGRESS PARK METRA STATION**  
**STA 1+00 TO STA 2+88**



**PROPOSED TYPICAL SECTION**  
**CONGRESS PARK METRA STATION**  
**STA 1+00 TO STA 2+88**

LEGEND OF SYMBOLS		
SYMBOL	DESCRIPTION	
EXISTING	A	EXISTING COMBINATION CONCRETE CURB AND GUTTER, TYPE B-6.12
	B	EXISTING PORTLAND CEMENT CONCRETE SIDEWALK
	C	EXISTING PORTLAND CEMENT CONCRETE PAVEMENT
	D	EXISTING HOT-MIX ASPHALT BINDER AND SURFACE COURSES
	E	EXISTING AGGREGATE BASE COURSE
	F	EXISTING LANDSCAPED PARKWAY
PROPOSED	1	PROPOSED PORTLAND CEMENT CONCRETE SIDEWALK, 5"
	2	PROPOSED PORTLAND CEMENT CONCRETE SIDEWALK, 6"
	3	AGGREGATE BASE COURSE, TYPE B, 4"
	4	PROPOSED BICYCLE SHELTER (SEE JOB SPECIFIC DETAILS SHEET FOR INFO)
	5	BICYCLE REPAIR STATION

Drawing file: W:\Projects\_by\_Village\Brookfield\12519082 - Metro Bike Parking\Typ Sections.dwg Jul 25, 2019 - 5:37pm



Civil Engineers  
 Municipal Consultants  
 Established 1911

9933 Roosevelt Road  
 Westchester, IL 60154-2780  
 Phone: 708-865-0300  
 www.hancock.com

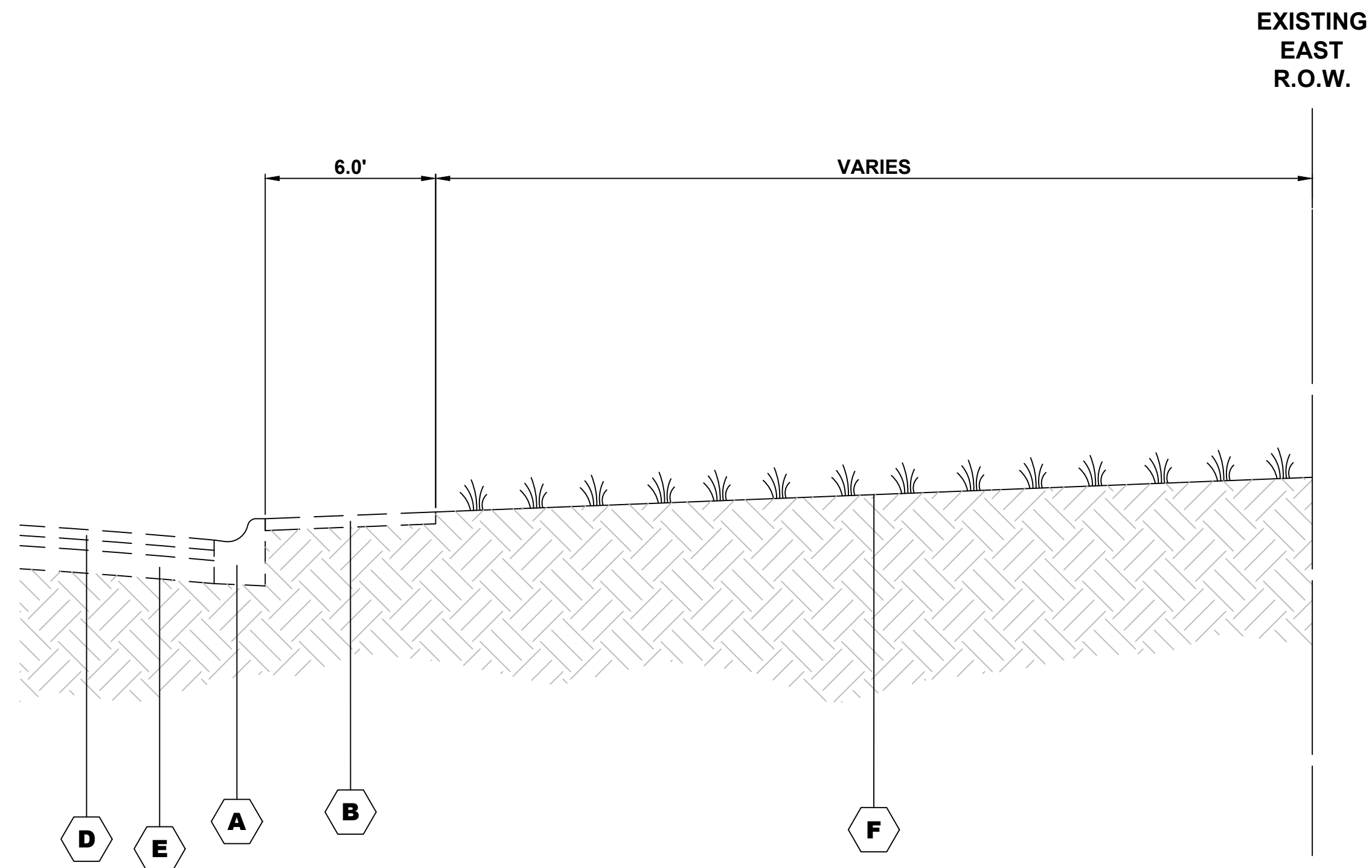
DESIGNED --	-	REVISED --	-
DRAWN --	TG, SFB, DMM	REVISED --	-
CHECKED --	-	REVISED --	-
DATE --	6-28-19	REVISED --	-

**STATE OF ILLINOIS**  
**DEPARTMENT OF TRANSPORTATION**

**TYPICAL SECTIONS**

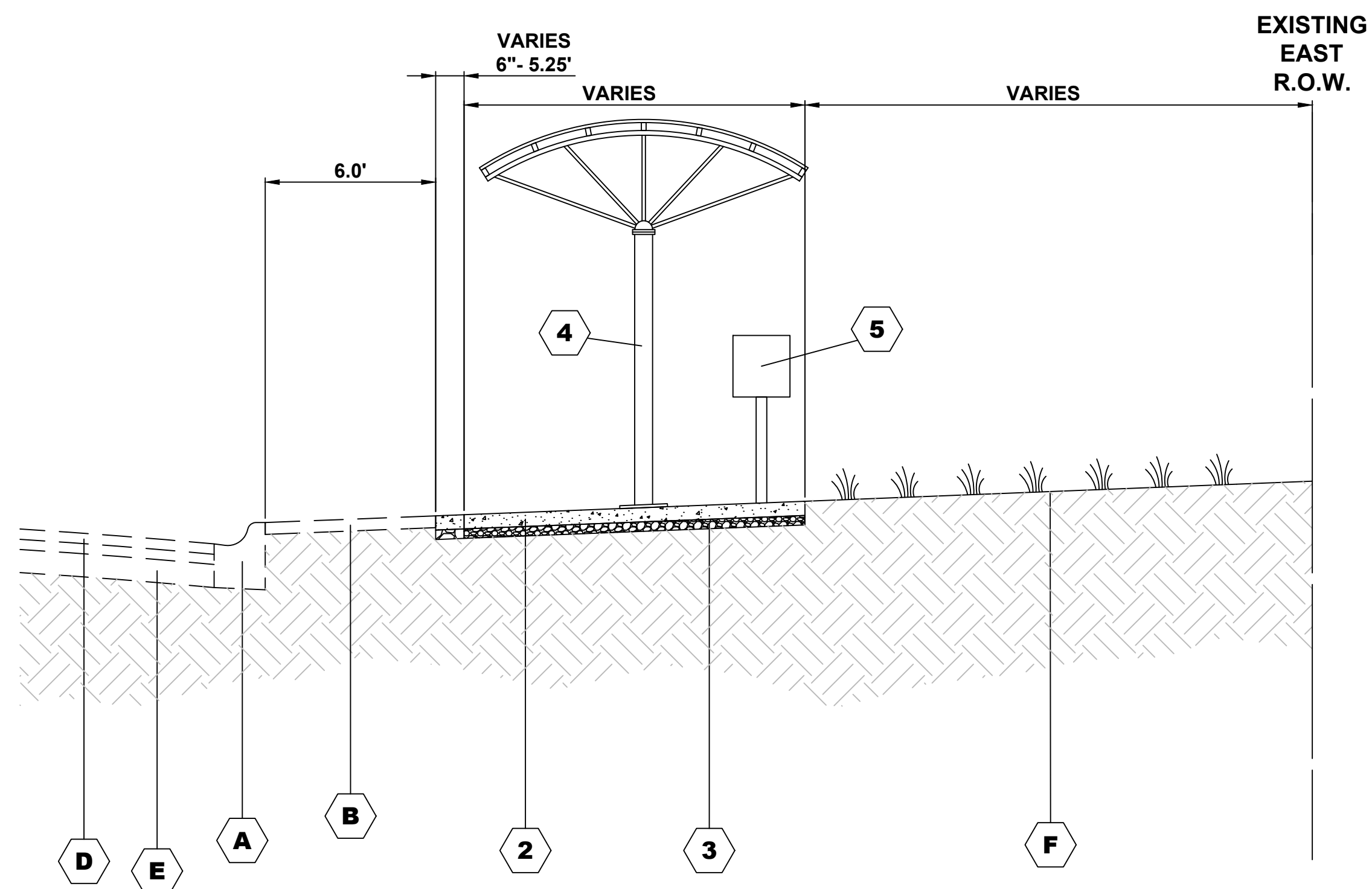
SCALE: SHEET NO. 1 OF 2 SHEETS STA. TO STA.

F.A.U. RTE.	SECTION	COUNTY	TOTAL SHEETS	SHEET NO.
-	17-00130-00-MS	COOK	13	5
FED. ROAD DIST. NO. 1   ILLINOIS			CONTRACT NO. 61G07	
FED. AID PROJECT			E.H.E. PROJECT NO. 125-19-08280	



**EXISTING TYPICAL SECTION**  
**BROOKFIELD METRA STATION**  
**STA 1+27 TO STA 1+65**

LEGEND OF SYMBOLS		
SYMBOL	DESCRIPTION	
EXISTING	A	EXISTING COMBINATION CONCRETE CURB AND GUTTER, TYPE B-6.12
	B	EXISTING PORTLAND CEMENT CONCRETE SIDEWALK
	C	EXISTING PORTLAND CEMENT CONCRETE PAVEMENT
	D	EXISTING HOT-MIX ASPHALT BINDER AND SURFACE COURSES
	E	EXISTING AGGREGATE BASE COURSE
	F	EXISTING LANDSCAPED PARKWAY
PROPOSED	1	PROPOSED PORTLAND CEMENT CONCRETE SIDEWALK, 5"
	2	PROPOSED PORTLAND CEMENT CONCRETE SIDEWALK, 6"
	3	AGGREGATE BASE COURSE, TYPE B, 4"
	4	PROPOSED BICYCLE SHELTER (SEE JOB SPECIFIC DETAILS SHEET FOR INFO)
	5	BICYCLE REPAIR STATION



**PROPOSED TYPICAL SECTION**  
**BROOKFIELD METRA STATION**  
**STA 1+27 TO STA 1+65**

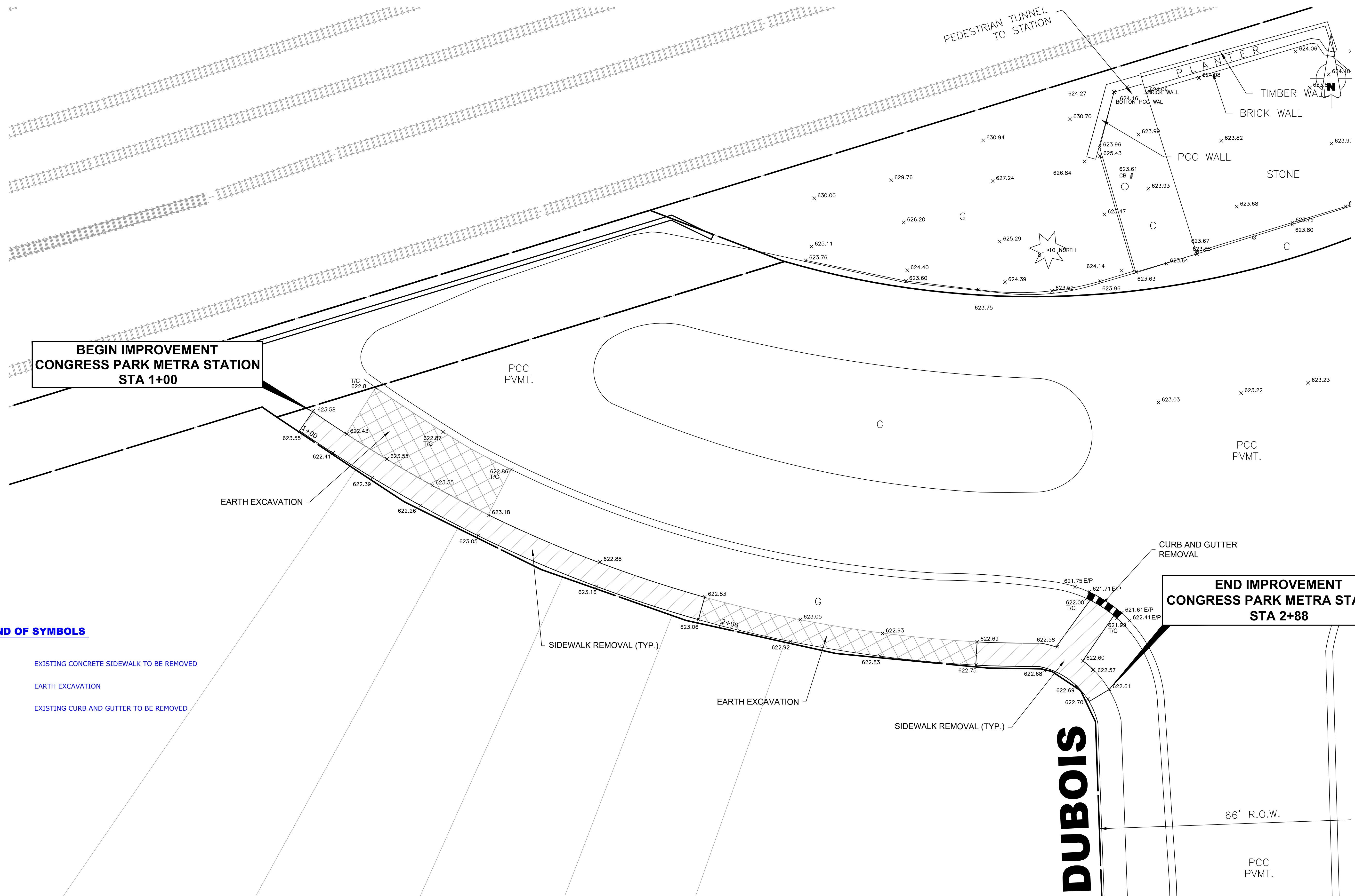
Drawing file: W:\Projects\by\_Village\Brookfield\12519082 - Metro Bike Parking\Typ Sections.dwg Jun 28, 2019 - 11:33am

DESIGNED	-	REVISED	-
DRAWN	TG, SFB, DMM	REVISED	-
CHECKED	-	REVISED	-
DATE	6-28-19	REVISED	-

F.A.U. RTE.	SECTION	COUNTY	TOTAL SHEETS	SHEET NO.
-	17-00130-00-MS	COOK	13	6
FED. ROAD DIST. NO. 1   ILLINOIS			CONTRACT NO. 61G07	
FED. AID PROJECT			E.H.E. PROJECT NO. 125-19-08280	



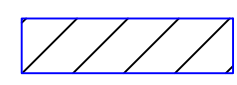
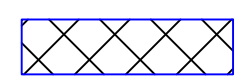

Drawing file: W:\Projects\_by\_Village\Brookfield\12519082 - Metro Bike Parking\Metro Bike Site\Metro\_Dubois\_Site.dwg Jul 26, 2019 - 1:35pm



**BEGIN IMPROVEMENT  
CONGRESS PARK METRA STATION  
STA 1+00**

**END IMPROVEMENT  
CONGRESS PARK METRA STATION  
STA 2+88**

**LEGEND OF SYMBOLS**

-  EXISTING CONCRETE SIDEWALK TO BE REMOVED
-  EARTH EXCAVATION
-  EXISTING CURB AND GUTTER TO BE REMOVED



Civil Engineers  
Municipal Consultants  
Established 1911

9933 Roosevelt Road  
Westchester, IL 60154-2780  
Phone: 708-865-0300  
www.hancock.com

DESIGNED - -	REVISED - -
DRAWN - TG, SFB, DMM	REVISED - -
CHECKED - -	REVISED - -
DATE - 6-28-19	REVISED - -

**STATE OF ILLINOIS  
DEPARTMENT OF TRANSPORTATION**

**CONGRESS PARK METRA STATION  
EXISTING CONDITIONS**

SCALE: 1" = 10' SHEET NO. OF SHEETS STA. TO STA.

F.A.U. RTE.	SECTION	COUNTY	TOTAL SHEETS	SHEET NO.
-	17-00130-00-MS	COOK	13	7
FED. ROAD DIST. NO. 1 ILLINOIS			CONTRACT NO. 61G07	
FED. AID PROJECT			E.H.E. PROJECT NO. 125-19-08280	



**BEGIN IMPROVEMENT  
BROOKFIELD METRA STATION  
STA 1+27**

**END IMPROVEMENT  
BROOKFIELD METRA STATION  
STA 1+65**

**RAILROAD**

**BROOKFIELD  
METRA STATION**

**LEGEND OF SYMBOLS**



**EARTH EXCAVATION**

**EARTH EXCAVATION**

**BURLINGTON BOULEVARD**

**FOREST AVENUE**

**PRAIRIE AVENUE**

**STATE OF ILLINOIS  
DEPARTMENT OF TRANSPORTATION**

**BROOKFIELD METRA STATION  
EXISTING CONDITIONS**

F.A.U. RTE.	SECTION	COUNTY	TOTAL SHEETS	SHEET NO.
-	17-00130-00-MS	COOK	13	8
FED. ROAD DIST. NO. 1 ILLINOIS			CONTRACT NO. 61G07	
FED. AID PROJECT			E.H.E. PROJECT NO. 125-19-08280	

DESIGNED --	REVISD --
DRAWN -- TG, SFB, DMM	REVISD --
CHECKED --	REVISD --
DATE -- 6-28-19	REVISD --

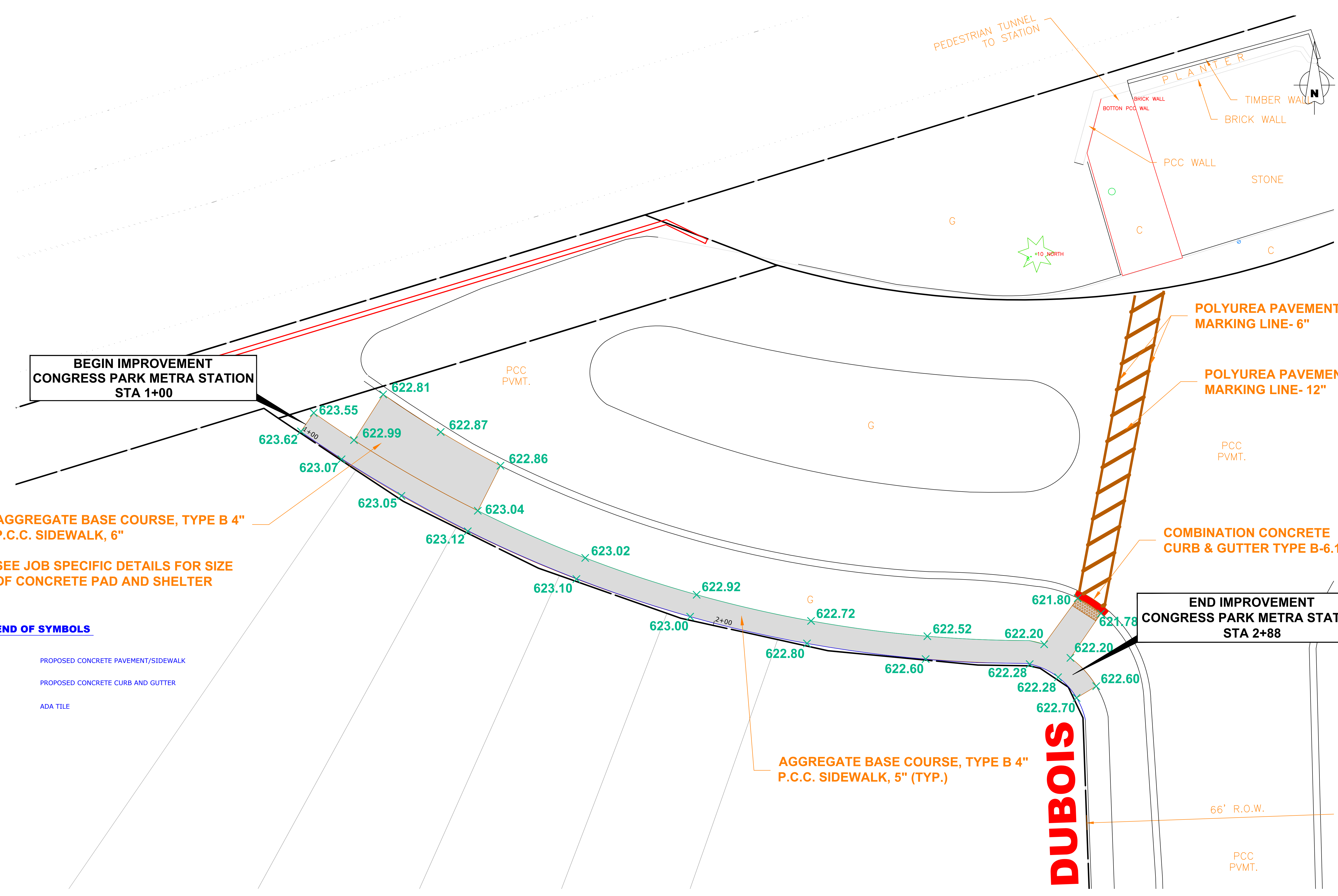
SCALE: 1" = 20' SHEET NO. OF SHEETS STA. TO STA.

Drawing file: W:\Projects\by\_Village\Brookfield\12519082 - Metro Bike Parking\Metro Bike Site\Bike topodwg Jun 28, 2019 - 11:48am  
 Drawing file: W:\Projects\by\_Village\Brookfield\12519082 - Metro Bike Parking\Metro Bike Site\Bike topodwg Jun 28, 2019 - 11:48am


**HANCOCK ENGINEERING**  
 1875 North of Eisenhower  
 Civil Engineers  
 Municipal Consultants  
 Established 1911  
 9933 Roosevelt Road  
 Westchester, IL 60154-2780  
 Phone: 708-865-0300  
 www.hancock.com



Drawing file: W:\Projects\_by\_Village\Brookfield\12519082 - Metro Bike Parking\Metro Bike Site\Metro\_Dubois\_Site.dwg Aug 07, 2019 - 4:22pm





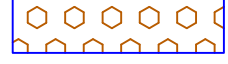
**BEGIN IMPROVEMENT  
CONGRESS PARK METRA STATION  
STA 1+00**

**END IMPROVEMENT  
CONGRESS PARK METRA STATION  
STA 2+88**

**AGGREGATE BASE COURSE, TYPE B 4"  
P.C.C. SIDEWALK, 6"**

**SEE JOB SPECIFIC DETAILS FOR SIZE  
OF CONCRETE PAD AND SHELTER**

**LEGEND OF SYMBOLS**

-  PROPOSED CONCRETE PAVEMENT/SIDEWALK
-  PROPOSED CONCRETE CURB AND GUTTER
-  ADA TILE

**AGGREGATE BASE COURSE, TYPE B 4"  
P.C.C. SIDEWALK, 5" (TYP.)**

**DUBOIS**

66' R.O.W.



Civil Engineers  
Municipal Consultants  
Established 1911

9933 Roosevelt Road  
Westchester, IL, 60154-2780  
Phone: 708-865-0300  
www.hancock.com

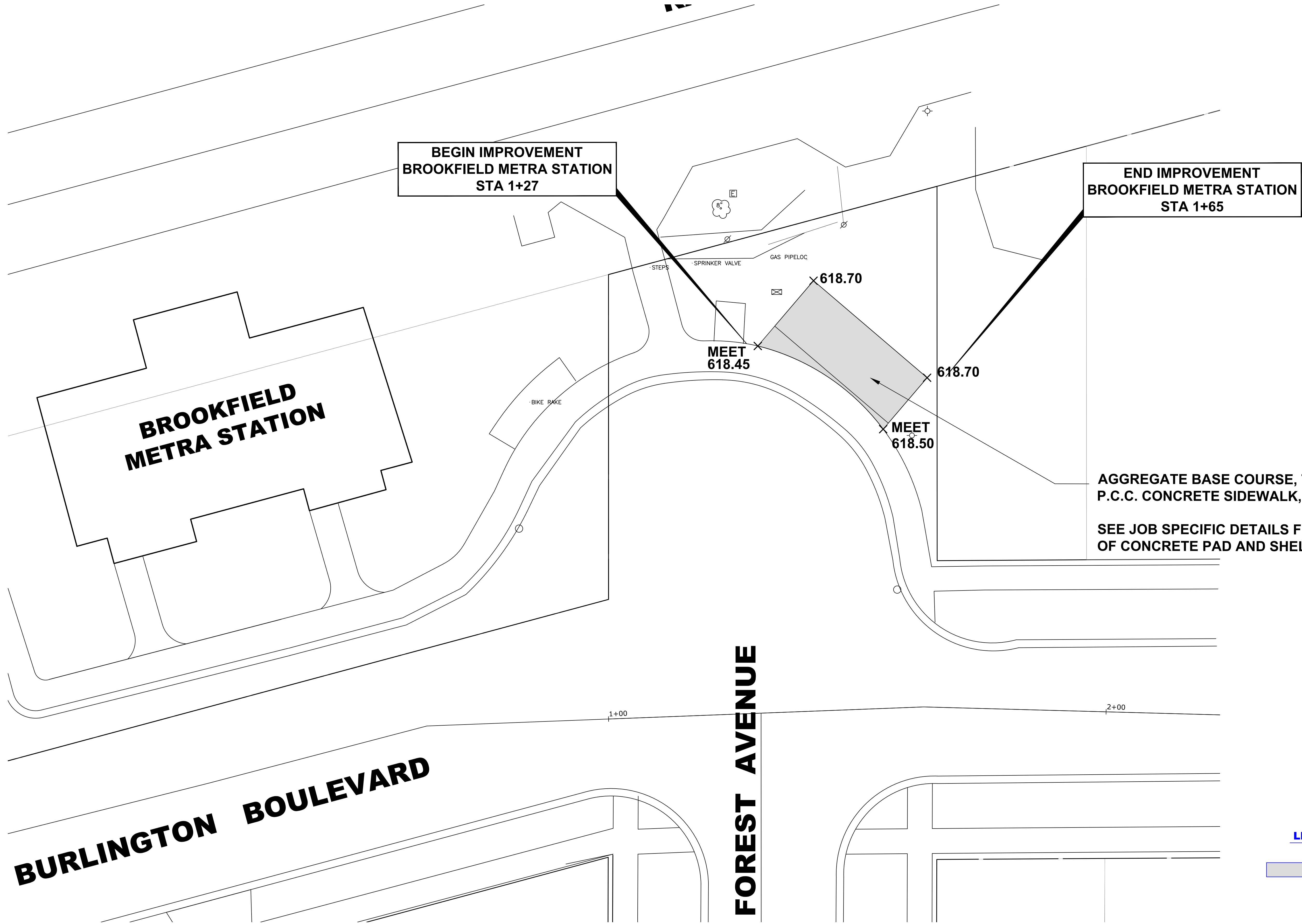
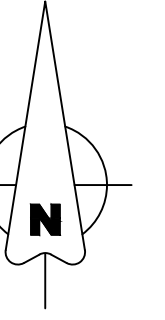
DESIGNED --	--	REVISED --	--
DRAWN --	TG, SFB, DMM	REVISED --	--
CHECKED --	--	REVISED --	--
DATE --	6-28-19	REVISED --	--

**STATE OF ILLINOIS  
DEPARTMENT OF TRANSPORTATION**

**CONGRESS PARK METRA STATION  
PROPOSED IMPROVEMENTS**

SCALE: 1" = 10'    SHEET NO.    OF    SHEETS    STA.    TO STA.

F.A.U. RTE.	SECTION	COUNTY	TOTAL SHEETS	SHEET NO.
-	17-00130-00-MS	COOK	13	9
CONTRACT NO. 61G07			FED. AID PROJECT	



AGGREGATE BASE COURSE, TYPE B 4"  
 P.C.C. CONCRETE SIDEWALK, 6"  
 SEE JOB SPECIFIC DETAILS FOR SIZE  
 OF CONCRETE PAD AND SHELTER

**LEGEND OF SYMBOLS**

PROPOSED CONCRETE PAVEMENT/SIDEWALK

Drawing file: W:\Projects\by\_Village\Brookfield\12519-082 - Metro Bike Parking\Metro Bike Site\Bike Topodwg Jun 28, 2019 - 11:48am  
 Drawing: W:\Projects\by\_Village\Brookfield\12519-082 - Metro Bike Parking\Metro Bike Site\Bike Topodwg Jun 28, 2019 - 11:48am

**HANCOCK ENGINEERING**  
 Civil Engineers  
 Municipal Consultants  
 Established 1911  
 9933 Roosevelt Road  
 Westchester, IL, 60154-2780  
 Phone: 708-865-0300  
 www.hancock.com

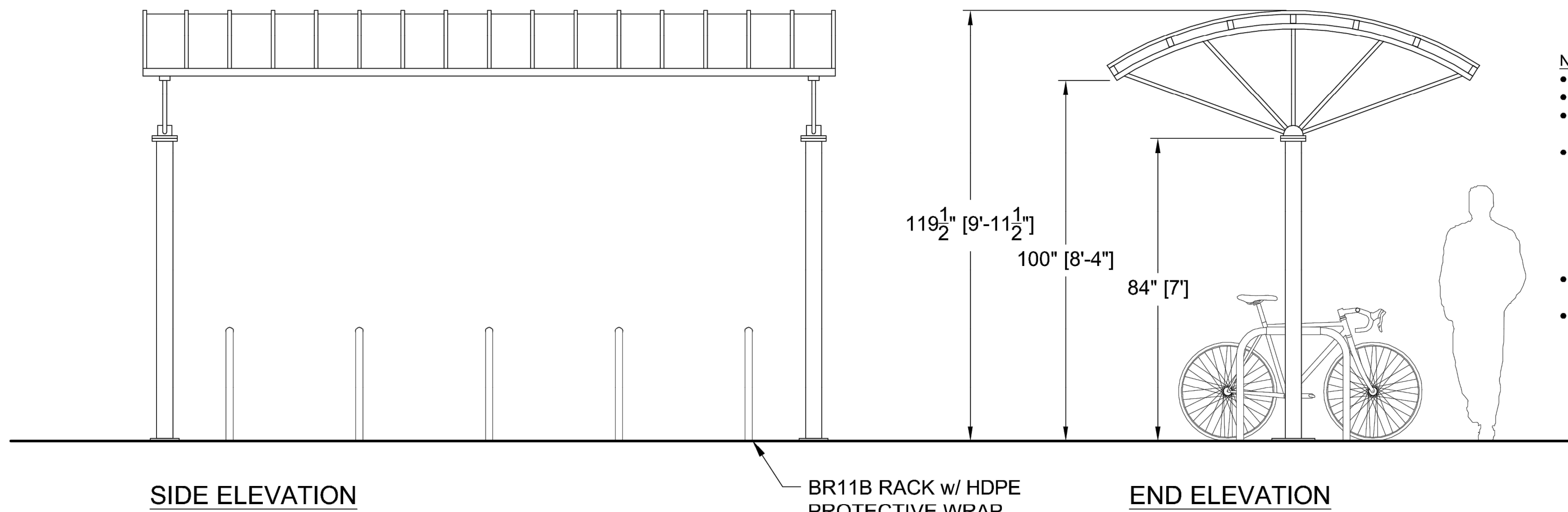
DESIGNED - -	REVISED -
DRAWN - TG, SFB, DMM	REVISED -
CHECKED - -	REVISED -
DATE - 6-28-19	REVISED -

**STATE OF ILLINOIS**  
**DEPARTMENT OF TRANSPORTATION**

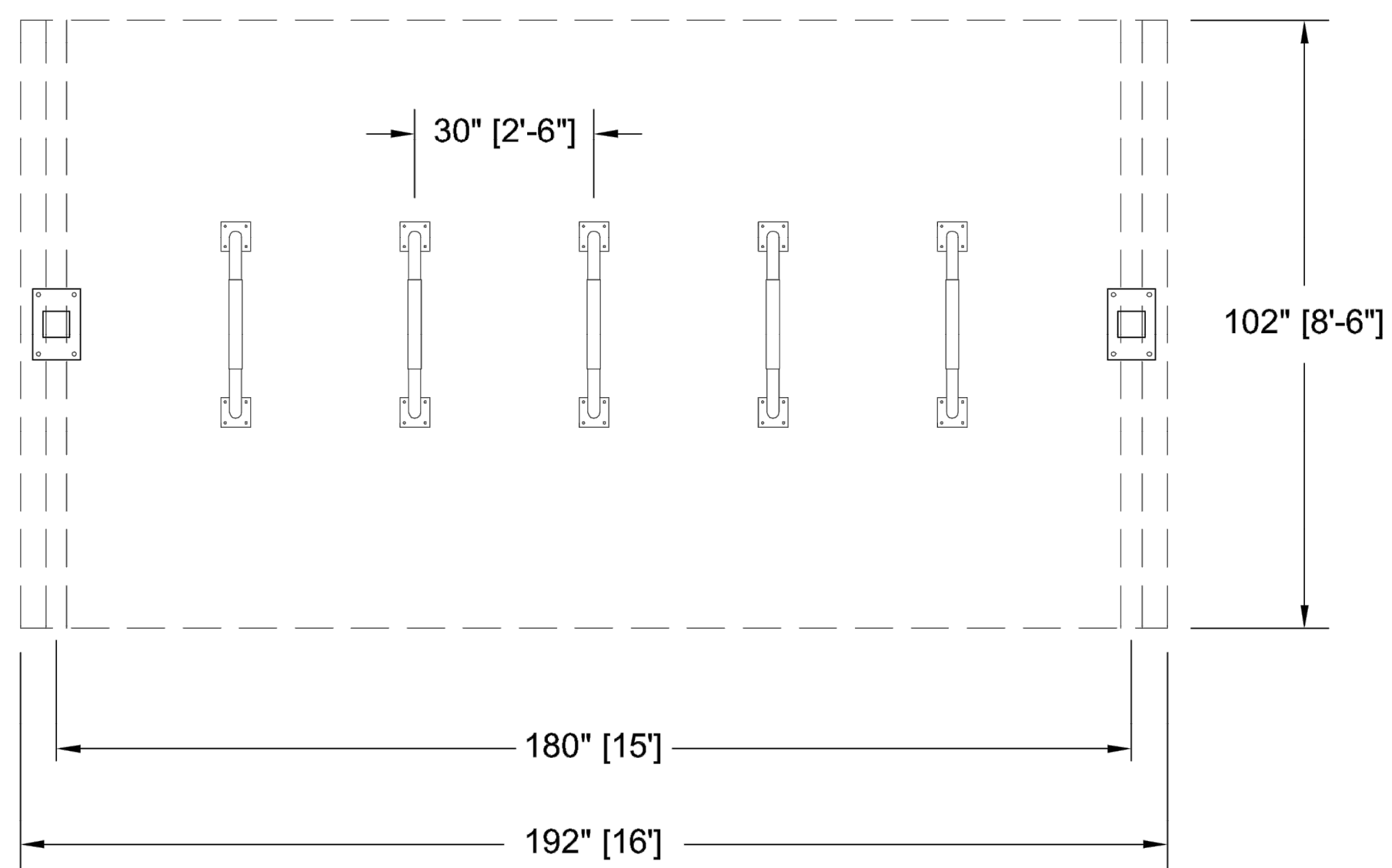
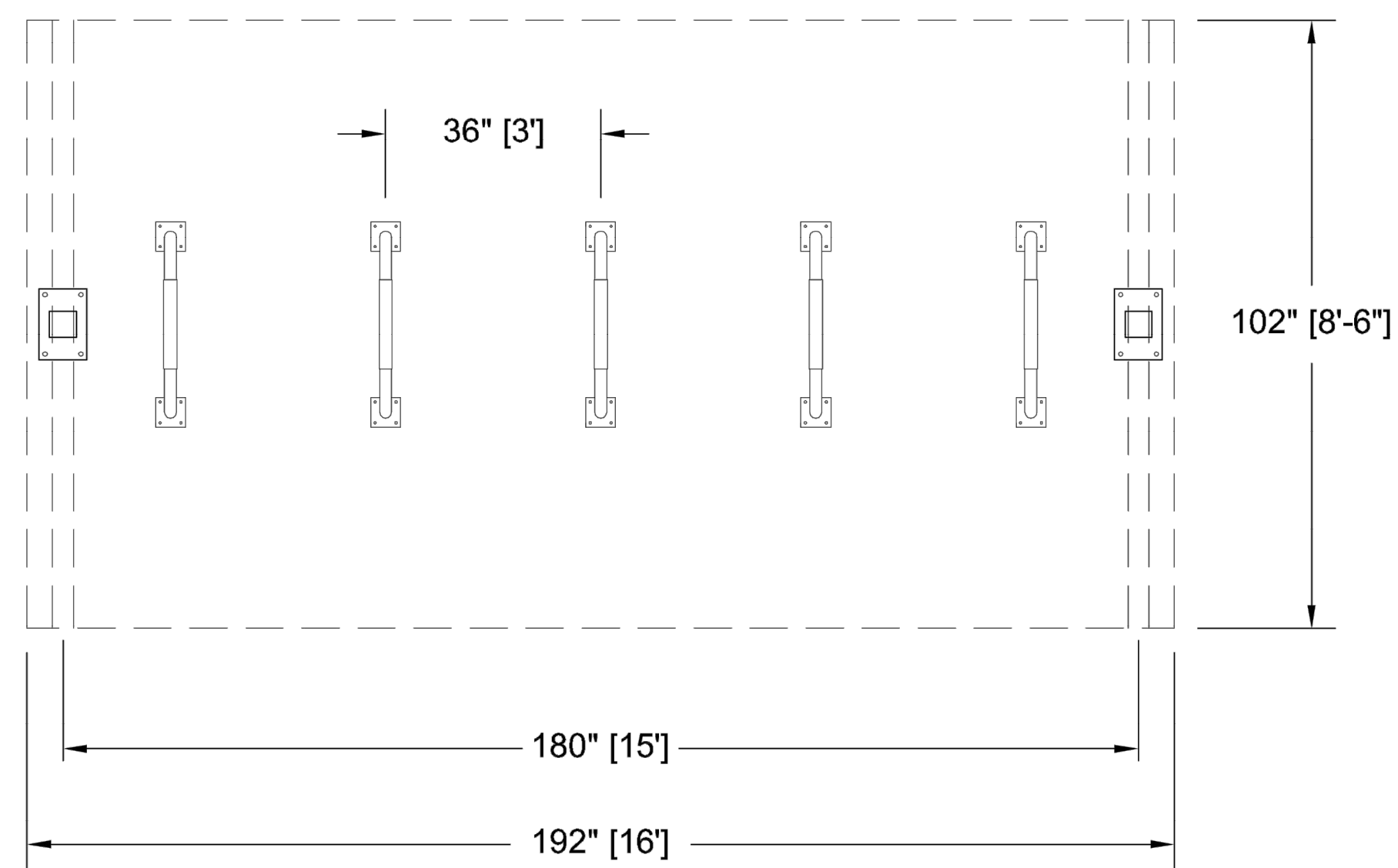
**BROOKFIELD METRA STATION**  
**PROPOSED IMPROVEMENTS**  
 SCALE: 1" = 10'  
 SHEET NO. - OF - SHEETS    STA. - TO STA. -

F.A.U. RTE.	SECTION	COUNTY	TOTAL SHEETS	SHEET NO.
-	17-00130-00-MS	COOK	13	10
FED. ROAD DIST. NO. 1   ILLINOIS			CONTRACT NO. 61G07	
FED. AID PROJECT			E.H.E. PROJECT NO. 125-19-08280	





- NOTES:**
- FRAMEWORK TO BE WELDED AND MECHANICALLY FASTENED STEEL
  - ALL FASTENERS TO BE STAINLESS STEEL
  - ROOF GLAZING TO BE: ROOF GLAZING TO BE: STANDING SEAM METAL BARREL VAULT (TRANSLUCENT PCSS OPTION), COLOR: \_\_\_\_\_
  - STEEL FINISHING:
    - MEDIA BLAST PREP
    - TNE MEC TNE ME ZINC 90-97 PRIMER
    - TNE MEC SERIES N69 HI-BUILD EPOXOLINE 2-PART EPOXY MIDCOAT;
    - TNE MEC SERIES 73 ENDURA-SHIELD TOPCOAT.
    - ALUMINUM TRIM TO HAVE SAME TOP TWO COATS (OR IN MATCHING ANODIZED). COLOR: \_\_\_\_\_
  - ALL DIMENSIONS TO BE FIELD VERIFIED
  - DESIGN IS SUBJECT TO CHANGE BASED ON FINAL ENGINEERING PHASE AND CUSTOMER APPROVAL.



BIKE CAPACITY		
RACK SPACING	# OF RACKS	# OF BIKES
36"	5	10
30"	5	10

**LOCATIONS:**  
 CONGRESS PARK STA 1+10 TO STA 1+40  
 BROOKFIELD STA 1+27 TO STA 1+65

- NOTES**
- 2 SIDE BY SIDE
  - PAD SIZE ~ 12' x 32'
  - TOTAL OF 10 BIKE RACKS

© Design by Duo-Gard Industries, Inc., 2016

Duo-Gard Industries, Inc.  
 Tel (734) 207-9700 Fax (734) 207-7995  
 www.duo-gard.com

**HANCOCK ENGINEERING**

100+ Years of Excellence

- Civil Engineers
- Municipal Consultants
- Established 1911

9933 Roosevelt Road  
 Westchester, IL 60154-2780  
 Phone: 708-865-0300  
 www.hancock.com

PROJECT NAME									
CUSTOMER SAMPLE									
DESCRIPTION									
9' X 16' "SOL" BICYCLE SHELTER, PLAN AND ELEVATION DETAILS									
PRJT ENG	PRJT MGR	DRFTR	DRW'G DATE	REV1	REV2	SCALE	PAGE	OF	DRWNG #
BDI	JW	GS	9.1.2016			3/16" = 1'-0"	1	1	0916SOL

**STATE OF ILLINOIS**  
**DEPARTMENT OF TRANSPORTATION**

DESIGNED - -	REVISED - -
DRAWN - TG, SFB, DMM	REVISED - -
CHECKED - -	REVISED - -
DATE - 6-28-19	REVISED - -

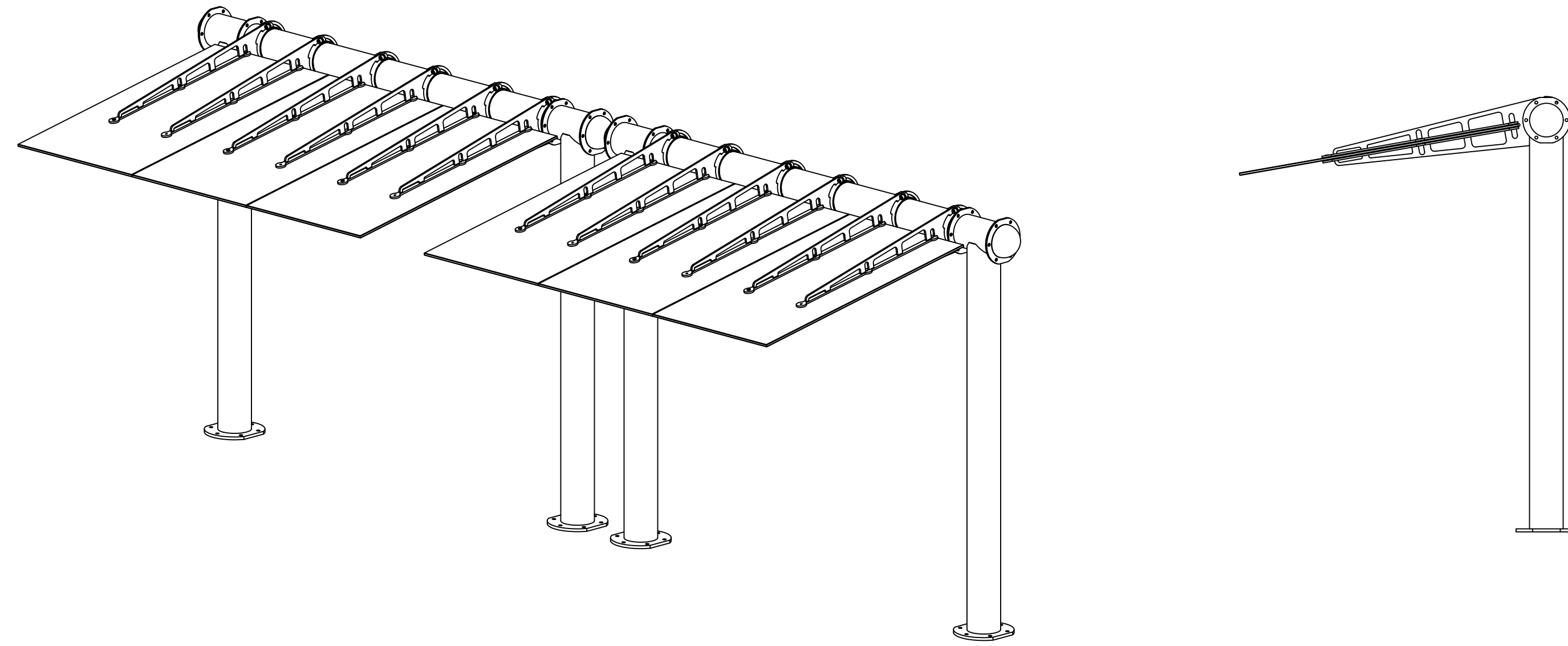
SCALE: NONE	SHEET NO. 1 OF 2 SHEETS	STA. -	TO STA. -
-------------	-------------------------	--------	-----------

<b>JOB SPECIFIC DETAILS</b>				
F.A.U. RTE.	SECTION	COUNTY	TOTAL SHEETS	SHEET NO.
-	17-00130-00-MS	COOK	13	11
CONTRACT NO. 61G07				
FED. ROAD DIST. NO. 1   ILLINOIS FED. AID PROJECT				

<b>JOB SPECIFIC DETAILS</b>				
F.A.U. RTE.	SECTION	COUNTY	TOTAL SHEETS	SHEET NO.
-	17-00130-00-MS	COOK	13	11
CONTRACT NO. 61G07				
FED. ROAD DIST. NO. 1   ILLINOIS FED. AID PROJECT				

<b>JOB SPECIFIC DETAILS</b>				
F.A.U. RTE.	SECTION	COUNTY	TOTAL SHEETS	SHEET NO.
-	17-00130-00-MS	COOK	13	11
CONTRACT NO. 61G07				
FED. ROAD DIST. NO. 1   ILLINOIS FED. AID PROJECT				

Drawing file: W:\Projects\_by\_Village\Brookfield\12519082 - Metro Bike Parking\Details.dwg Aug 20, 2019 - 10:52am


 SELECT DESIRED SIZE:

- SINGLE
- DOUBLE
- TRIPLE

 SELECT DESIRED ROOF POLYCARBONATE:

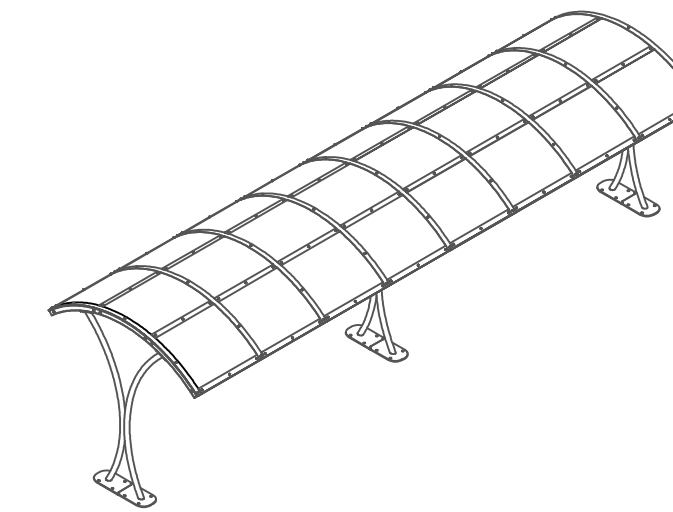
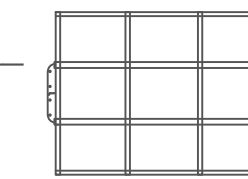
- CLEAR
- TINTED BRONZE

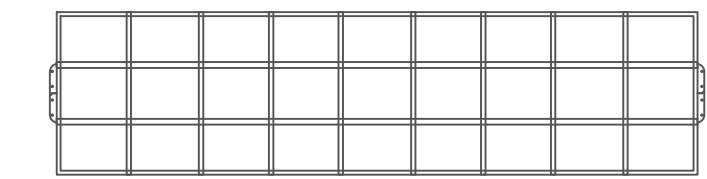
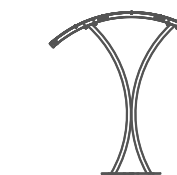
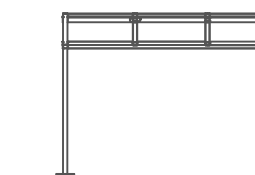
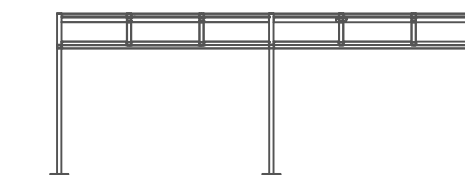
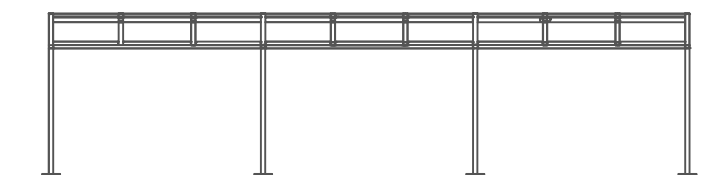
 SELECT DESIRED POWDER COATED FINISH:

- STOCK COLOR: \_\_\_\_\_
- CUSTOM COLOR: \_\_\_\_\_

 SELECT DESIRED LIGHTING: (OPTIONAL)

- SOLAR LIGHTING


 PERSPECTIVE  
DOUBLE

 PLAN VIEW  
SINGLE

 PLAN VIEW  
DOUBLE

 PLAN VIEW  
TRIPLE

 SIDE  
ELEVATION

 FRONT ELEVATION  
SINGLE

 FRONT ELEVATION  
DOUBLE

 FRONT ELEVATION  
TRIPLE

## STRATUS SHELTER BY DERO

### NOTES

- 2 SIDE BY SIDE
- PAD SIZE ~ 11' X 30'
- TOTAL OF 8 BIKE RACKS

### SPECIFICATIONS

**FRAME:** STEEL  
**ROOF:** TWIN WALL, 6MM POLYCARBONATE; UV PROTECTION  
**DIMENSIONS:**  
 SINGLE: 12'-10" L X 9'-0" W X 8'-10" H  
 DOUBLE: 24'-7" L X 9'-0" W X 8'-10" H  
 TRIPLE: 36'-4" L X 9'-0" W X 8'-10" H

 PROFESSIONAL  
 ENGINEERING REPORT:

- ACCEPTED
- DECLINED

### NOTES:

1. SEE MANUFACTURER FOR COLOR OPTIONS. (CUSTOM COLORS AVAILABLE)
2. INSTALLATION TO BE COMPLETED IN ACCORDANCE WITH MANUFACTURER'S SPECIFICATIONS.
3. DO NOT SCALE DRAWING.
4. THIS DRAWING IS INTENDED FOR USE BY ARCHITECTS, ENGINEERS, CONTRACTORS, CONSULTANTS AND DESIGN PROFESSIONALS FOR PLANNING PURPOSES ONLY. THIS DRAWING MAY NOT BE USED FOR CONSTRUCTION.
5. ALL INFORMATION CONTAINED HEREIN WAS CURRENT AT THE TIME OF DEVELOPMENT BUT MUST BE REVIEWED AND APPROVED BY THE PRODUCT MANUFACTURER TO BE CONSIDERED ACCURATE.
6. CONTRACTOR'S NOTE: FOR PRODUCT AND COMPANY INFORMATION VISIT [www.CADdetails.com/info](http://www.CADdetails.com/info) AND ENTER REFERENCE NUMBER 5001-005.

### NOTES

- 2 SIDE BY SIDE
- PAD SIZE ~ 9' X 29'
- TOTAL OF 8 BIKE RACKS

### LOCATIONS:

CONGRESS PARK STA 1+10 TO STA 1+40  
 BROOKFIELD STA 1+27 TO STA 1+65

Details

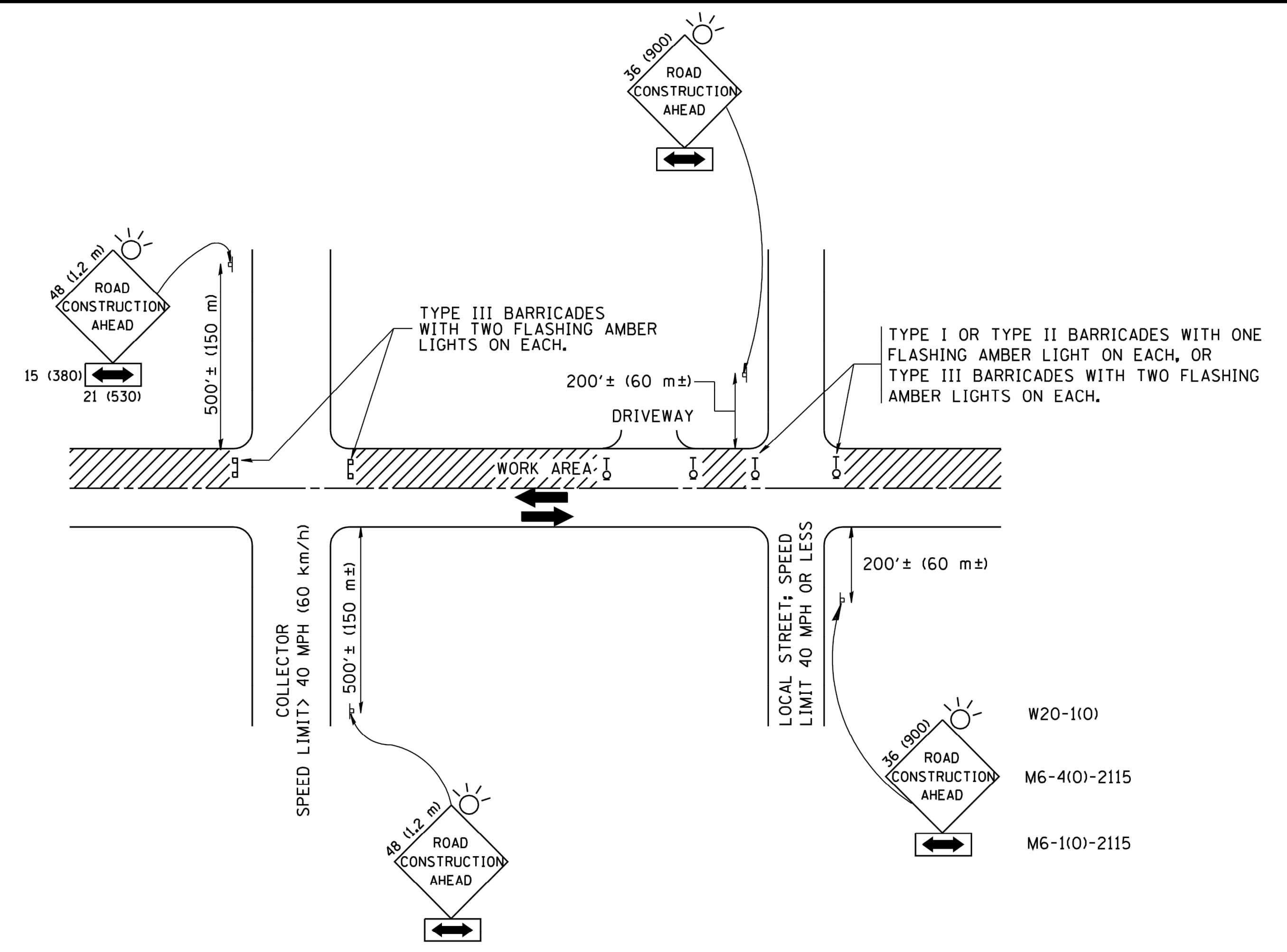
PROTECTED BY COPYRIGHT ©2019 CADDETAILS.COM LTD.

REVISION DATE 07/26/2019

CADdetails.com



Drawing file: W:\Projects\_by\_Village\Brookfield\12519082 - Metro Bike Parking\DOT Standards.dwg Jun 28, 2019 - 11:35am



**TRAFFIC CONTROL AND PROTECTION FOR SIDE ROADS, INTERSECTIONS, AND DRIVEWAYS**

**NOTES:**

- A. FOR NO LANE RESTRICTION ON THE SIDE ROAD OR DRIVEWAYS
  1. SIDE ROAD WITH A SPEED LIMIT OF 40 MPH (60 km/h) OR LESS AS SHOWN ON THE DRAWING AND AS DIRECTED BY THE ENGINEER:
    - a) ONE ROAD CONSTRUCTION AHEAD SIGN 36 x 36 (900x900) WITH A FLASHER AND FLAG MOUNTED ON IT APPROXIMATELY 200' (60 m) IN ADVANCE OF THE MAIN ROUTE.
    - b) THE CLOSED PORTION OF THE MAIN ROUTE SHALL BE PROTECTED BY BLOCKING WITH TYPE I, TYPE II OR TYPE III BARRICADES, 1/3 OF THE CROSS SECTION OF THE CLOSED PORTION.
  2. SIDE ROAD WITH A SPEED LIMIT GREATER THAN 40 MPH (60 km/h) AS SHOWN ON THE DRAWING AND AS DIRECTED BY THE ENGINEER:
    - a) ONE ROAD CONSTRUCTION AHEAD SIGN 48 x 48 (1.2 m x 1.2 m) WITH A FLASHER MOUNTED ON IT APPROXIMATELY 500' (150 m) IN ADVANCE OF THE MAIN ROUTE.
    - b) THE CLOSED PORTION OF THE MAIN ROUTE SHALL BE PROTECTED BY BLOCKING WITH TYPE III BARRICADES, 1/2 OF THE CROSS SECTION OF THE CLOSED PORTION.
  3. WHEN THE SIDE ROAD LIES BETWEEN THE BEGINNING OF THE MAINLINE SIGNING AND THE WORK ZONE, A SINGLE HEADED ARROW (M6-1) SHALL BE USED IN LIEU OF THE DOUBLE HEADED ARROW (M6-4).
- B. FOR A LANE CLOSURE ON A SIDE ROAD OR DRIVEWAY:

USE APPLICABLE PORTIONS OF THE TYPICAL APPLICATION OF TRAFFIC CONTROL DEVICES (STD. 701501, STD. 701606 OR THE APPROPRIATE STANDARD). THE SPACING OF SIGNS AND BARRICADES SHALL BE ADJUSTED FOR FIELD CONDITIONS AS DIRECTED BY THE ENGINEER. THE DIRECTIONAL ARROW SHALL BE COVERED OR REMOVED WHEN NO LONGER CONSISTENT WITH THE SIDE ROAD LANE CLOSURE.
- C. ADVANCE WARNING SIGNS ARE TO BE OMITTED ON DRIVEWAY UNLESS OTHERWISE NOTED.
- D. THE TRAFFIC CONTROL AND PROTECTION FOR SIDE ROADS, INTERSECTIONS, AND DRIVEWAYS SHALL BE INCIDENTAL TO THE COST OF SPECIFIED TRAFFIC CONTROL STANDARDS OR ITEMS.

All dimensions are in millimeters (inches) unless otherwise shown.

FILE NAME = W:\diststd\22x34\tcl0.dgn	USER NAME = gaglianobt	DESIGNED - LHA	REVISED - J. OBERLE 10-18-95
		DRAWN -	REVISED - A. HOUSEH 03-06-96
	PLOT SCALE = 500.000 ' / IN.	CHECKED -	REVISED - A. HOUSEH 10-15-96
	PLOT DATE = 1/4/2008	DATE - 06-89	REVISED - T. RAMMACHER 01-06-00

**STATE OF ILLINOIS  
DEPARTMENT OF TRANSPORTATION**

**TRAFFIC CONTROL AND PROTECTION FOR  
SIDE ROADS, INTERSECTIONS, AND DRIVEWAYS**

SCALE: NONE    SHEET NO. 1 OF 1 SHEETS    STA. TO STA.

F.A.U. RTE.	SECTION	COUNTY	TOTAL SHEETS	SHEET NO.
-	17-00130-00-MS	COOK	13	13
TC-10			CONTRACT NO. 61G07	
FED. ROAD DIST. NO. 1 ILLINOIS			FED. AID PROJECT	