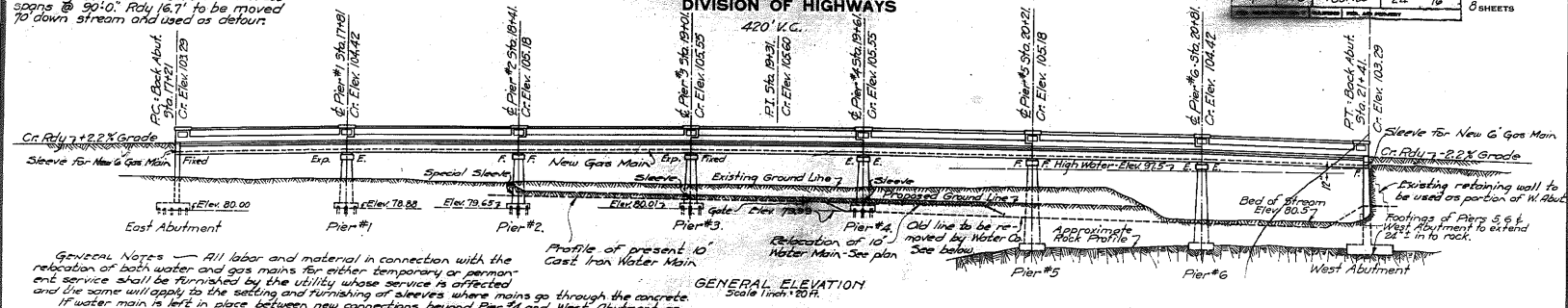


STATE OF ILLINOIS
DEPARTMENT OF PUBLIC WORKS & BUILDINGS
DIVISION OF HIGHWAYS

9	100	Peoria	24	16
---	-----	--------	----	----

SHEET NO. 1
8 SHEETS

B.M. #3 - Square on N.E. Tower leg base 33' Right Sta. 21+00.
Elevation 101.20
Existing Structure: Two Pratt Truss spans @ 90'-0" Rdy 16.7' to be moved 70' down stream and used as detour.



GENERAL NOTES - All labor and material in connection with the relocation of both water and gas mains for either temporary or permanent service shall be furnished by the utility whose service is affected and die same will apply to the setting and furnishing of sleeves where mains go through the concrete.
If water main is left in place between new connections beyond Pier #3 and West Abutment as shown, after new service is in use, bridge contractor shall proceed with work but will not be held liable for damage to water main.
Bridge contractor will be held responsible for any damage to mains caused by his operations, and great care must be exercised that no interruption is made to water or gas service.
Gas company to do all cutting and patching other than that called for by bridge contract at west abutment for the proper installation of sleeve for receiving new gas main.

Water main could not be located at east abutment. Possibly it is under present pavement. Contractor to proceed with caution and care. There will be no additional compensation if water main is encountered.

Temporary gas service will be removed by gas company after new permanent line on bridge is in service.

Present 6" gas main supports on bridge will be left in place and end of temporary line when bridge is moved downstream. Present main to be supported by gas company while bridge is being moved but contractor to be responsible for damage caused by his operations until temporary line is in service.

Present 6" Gas Main will be removed by gas company after temporary 6" line is put in service.

Contractor to support water main at excavations for Piers 2, 3 & 4. If necessary to prevent damage to line.

Proposed relocation of 10" Water Main to be new pipe and fittings - All relocation work on pipe to be done by Water Co. including all labor and material - See note for exceptions.

PLAN

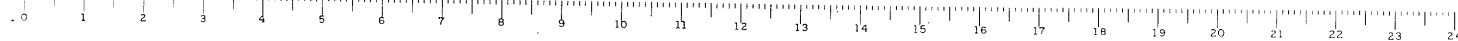
TOTAL BILL OF MATERIAL

Item	QUANTITY	UNIT PRICE	TOTAL	REMARKS
Class A Concrete	1254.1	Cu Yds.	1854.1	
Class X Concrete	1446.2	Cu Yds.	5016.2	
Reinforcing Steel	481,850	Lbs.	25,200	
Rockers & Plates	23,700	Lbs.	23,700	
Structural Steel	6240	Lbs.	6240	
Structural Tile	4410	Sq. Ft.	4410	
10" Pipe	3370	Lf.	3370	
4" Pipe	2040	Lf.	2040	
Nails	0.78	Lbs.	0.78	
Reinforcing Concrete	0.78	Cu Yds.	0.78	
Rock Excavation	4640	Cu Yds.	2270	
Untreated Milling (80' line)	2270	Lf.	2270	

COMPUTED - P.M.M. H.L.H.R.D.	EXAMINED - S-16-11-31
CHECKED - H.L.H.R.D.	DESIGNED - P.M. H.L.H.R.D.
DRAWN - P.M. H.L.H.R.D.	APPROVED -
CHECKED - H.L.H.R.D.	
ASSEMBLED -	
CHECKED -	

PLAN & GENERAL ELEVATION
KICKAPOO CREEK
S.B.T. ROUTE 9 - SECTION - 48B
PEORIA COUNTY
STA. 19+30

Prepared by Chicago in Peoria, Ill. 1916
Checked by

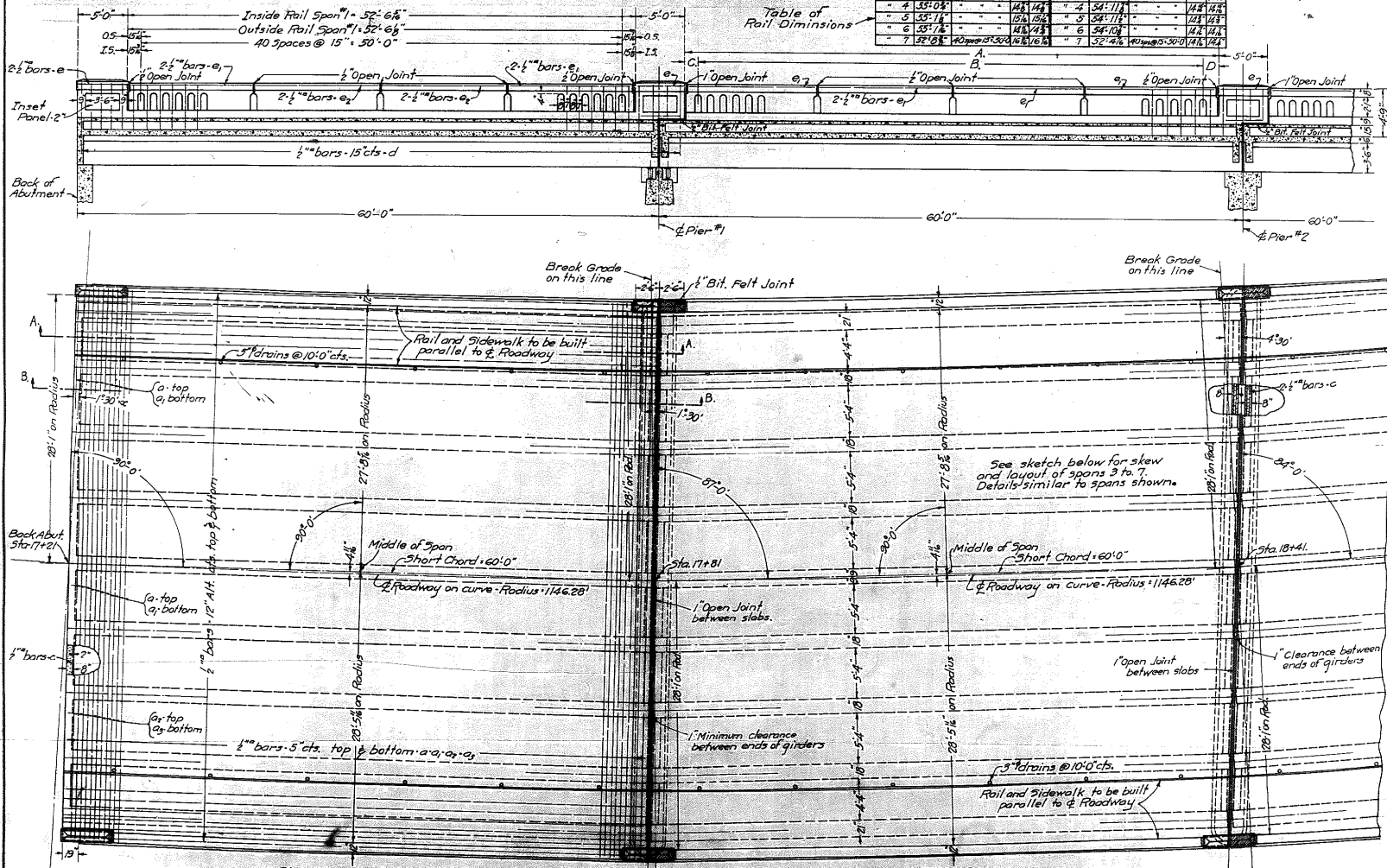


PROJECT NO.	48B	SECTION	2A	DATE	15
DESIGNER	P. Michener				
CHECKED	H. H. Davis				
DRAWN	P. M.				
CHECKED	H. H. D.				
SPECIAL					
APPROVED					
CHECKED					

STATE OF ILLINOIS
DEPARTMENT OF PUBLIC WORKS & BUILDINGS
DIVISION OF HIGHWAYS

Span No.	Inside Rail			Outside Rail		
	A	B	C	A	B	C
1	55'-0"	42'-0"	18'-0"	55'-0"	42'-0"	18'-0"
2	55'-0"	42'-0"	18'-0"	55'-0"	42'-0"	18'-0"
3	55'-0"	42'-0"	18'-0"	55'-0"	42'-0"	18'-0"
4	55'-0"	42'-0"	18'-0"	55'-0"	42'-0"	18'-0"
5	55'-0"	42'-0"	18'-0"	55'-0"	42'-0"	18'-0"
6	55'-0"	42'-0"	18'-0"	55'-0"	42'-0"	18'-0"
7	55'-0"	42'-0"	18'-0"	55'-0"	42'-0"	18'-0"

SHEET NO. 2
8 SHEETS

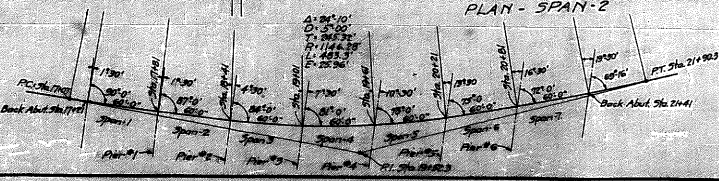


PLAN - SPAN - 1

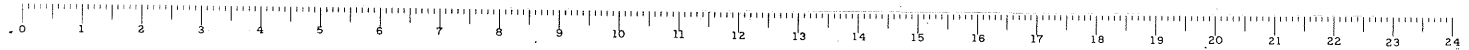
PLAN - SPAN - 2

COMPUTED	- P. Michener
CHECKED	- H. H. Davis
DRAWN	- P. M.
CHECKED	- H. H. D.
SPECIAL	
APPROVED	
CHECKED	

EXAMINED 5-16-31
APPROVED
P. Michener



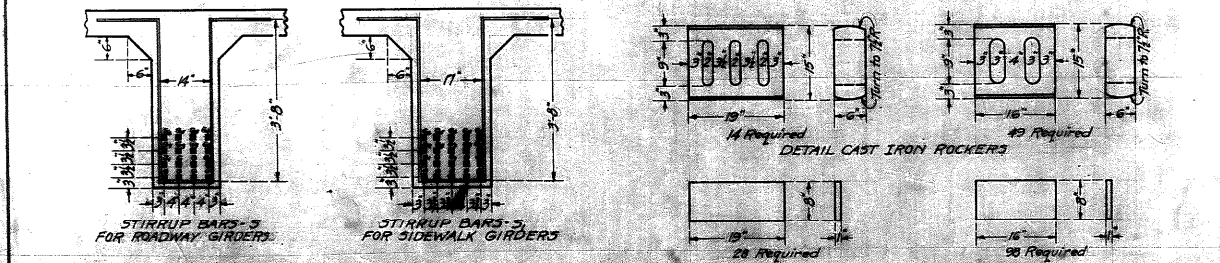
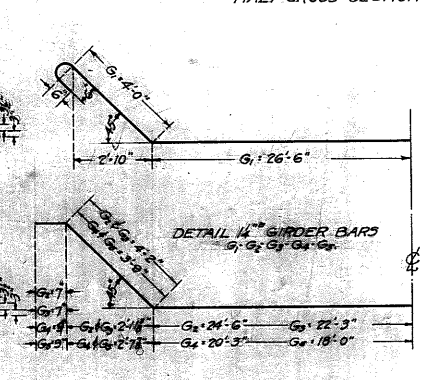
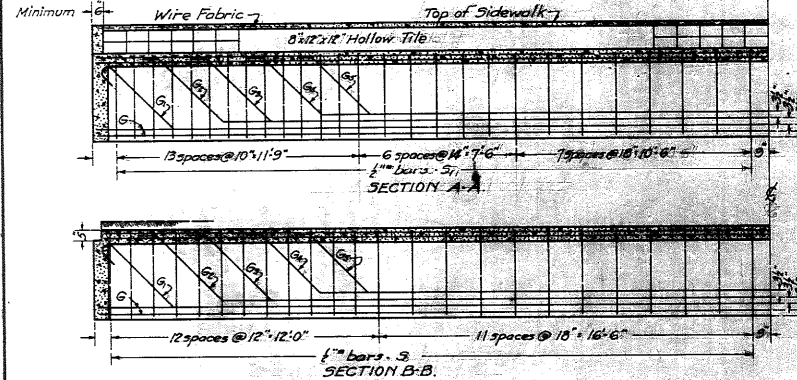
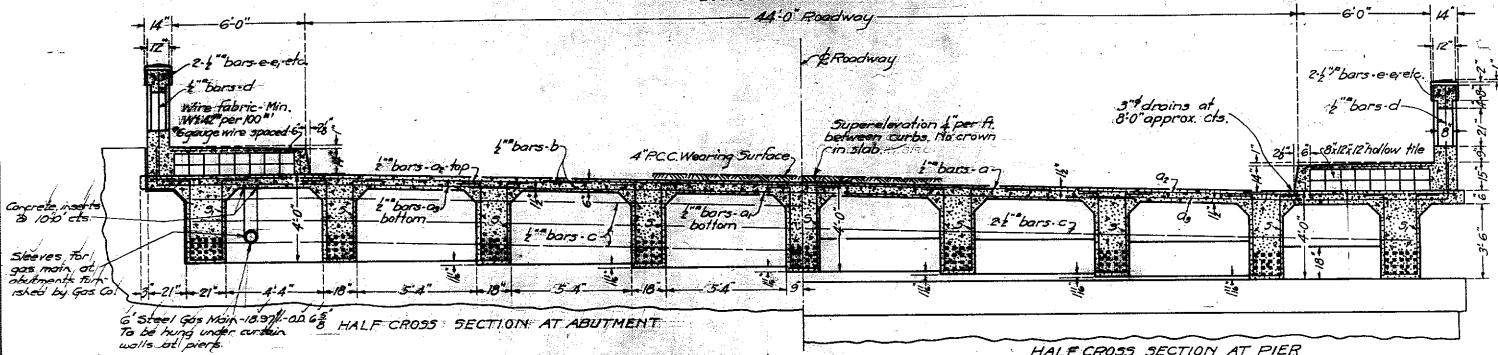
KICKAPOO CREEK
S.B.I. ROUTE 9 - SECTION 48B
PEORIA COUNTY
STA. 19+30



STATE OF ILLINOIS
DEPARTMENT OF PUBLIC WORKS & BUILDINGS
DIVISION OF HIGHWAYS

PROJECT NO.	43 B	SECTION	2A	SHEET NO.	18
					8 SHEETS

SHEET NO. 3
8 SHEETS



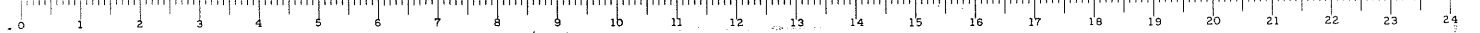
Rockers and plates shall be given one coat of sublimed blue lead paint and two coats of white lead paint.
Surface of plates adjacent to rockers shall be planned.
All reinforcing steel to be wired securely in place before concrete is poured.
Class X Concrete shall be used thruout.

BILL OF MATERIAL - FOR 7 SPANS

Bar	No	Size	Length
a	997	1/2"	77'-6"
a1	997	"	29'-6"
a2	1354	"	20'-6"
a3	1354	"	17'-3"
b	1239	"	21'-0"
c	42	"	23'-6"
d	672	"	4'-6"
e	32	"	4'-9"
e1	96	"	13'-6"
e2	16	"	12'-3"
G	392	1 1/2"	59'-9"
G1	140	"	63'-6"
G2	140	"	58'-6"
G3	126	"	54'-0"
G4	140	"	49'-6"
G5	126	"	45'-0"
s	2352	1/2"	10'-6"
s1	156	1/2"	11'-0"
Reinforcing Steel		Lbs.	481,850
Class X Concrete (Rail) Cu Yds.			73.9
Class X Concrete (Span) Cu Yds.			1392.7
Cast Iron Rockers		Lbs.	18940
Steel Plates		Lbs.	4780
Structural Tile		Sq. Ft.	4410
Wire Mesh		Sq. Ft.	3370
Name Plate			one
4" RCC Wearing Surface		Sq Yds.	2040

COMPUTED - P. Michener
CHECKED - J. N. [Signature]
DRAWN - P. M.
SPECIAL
APPROVED - [Signature]
APPROVED - [Signature]

KICKAPOO CREEK
S.E. ROUTE 9 - SECTION 48B
PEORIA COUNTY
STA. 19+30



B.M. 3 - Square on N.E. tower leg base
33 Ft. Sta. 21+00. Elevation 101.21

STATE OF ILLINOIS
DEPARTMENT OF PUBLIC WORKS & BUILDINGS
DIVISION OF HIGHWAYS

PROJECT NO.	SEC.	COUNTY	STATION	SHEET NO.
9	AB	Peoria	24	19

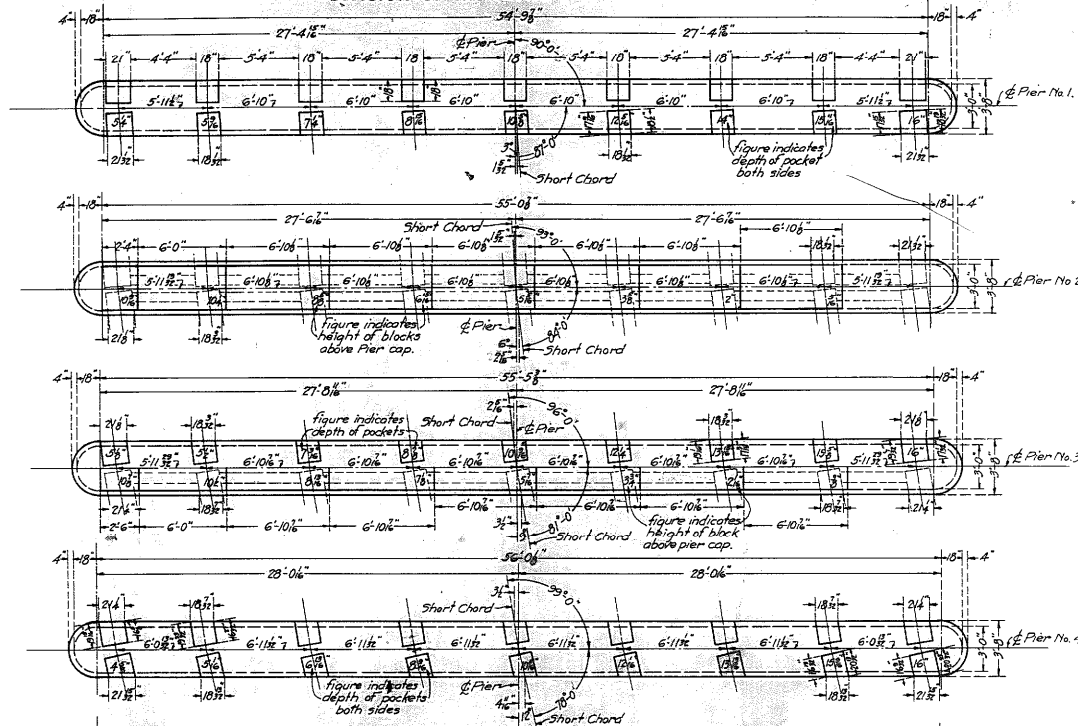
SHEET NO. 4
8 SHEETS

BILL OF MATERIAL - PIERS 1 to 4

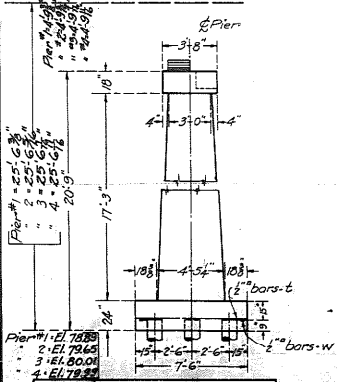
Bar No.	Size	Length
1	4#	71.34'
2	2#	21.9"
Reinforcing Steel Lbs. 3500		
Class A Concrete Cu Yds. 195.1		
Structural Steel (Exp.) Lbs. 6240		
Untr. Piles (20 ft. long) lin. ft. 4640		

Notes:
Class A Concrete to be used thruout,
in all Piers.
Piling under piers 1, 2, 3 & 4 only.

17 Ton untreated piling, 8" tip,
12" butt. Estimated length 20 feet,
232 Required. Total length 4640 lin. ft.



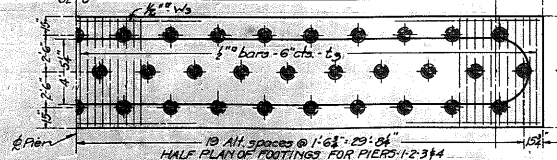
Crown Elevation @ 6'
Pier #1: 104.42
2: 105.18
3: 105.75
4: 105.25



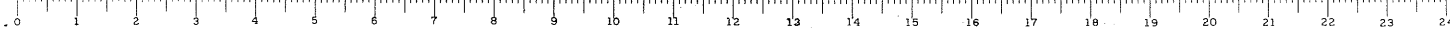
Pier #1: 16'-2"
2: 16'-2"
3: 16'-2"
4: 9'-6"

COMPUTED - P. Michener - W.L.M.	EXAMINED - [Signature]
CHECKED - H.H. Davis	PASSED - [Signature]
DRAWN - P.M.	APPROVED - [Signature]
CHECKED - H.H.D.	
ASSEMBLED -	
CHECKED -	

ELEVATION



DETAILS PIERS 1, 2, 3 & 4,
MICKAPOO CREEK
S.B. ROUTE 9 - SECTION 48B,
PEORIA COUNTY
STA. 19+30.

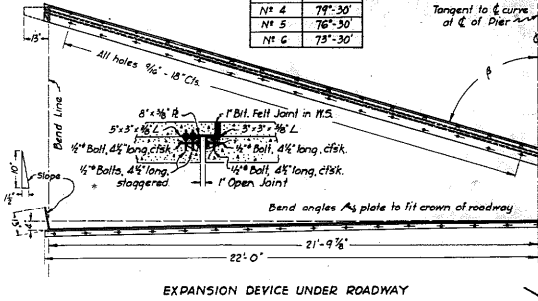


B.M. #3 - Square on N.E. Tower-leg base
33 Ft. Rt. Sta. 2100 - Elev. 101.21

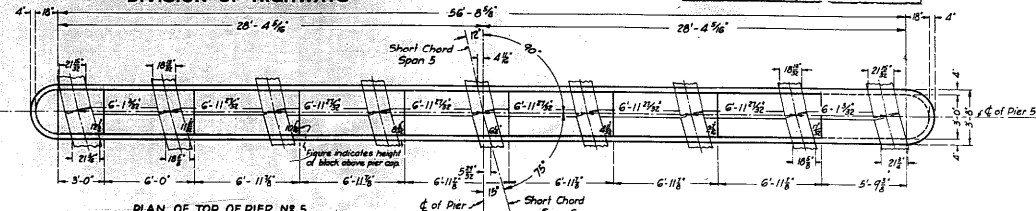
STATE OF ILLINOIS
DEPARTMENT OF PUBLIC WORKS & BUILDINGS
DIVISION OF HIGHWAYS

PROJECT	NO.	SECTION	DATE	SHEET NO.
9	48-B	Peoria	2d	20
SHEET NO. 5				8 SHEETS

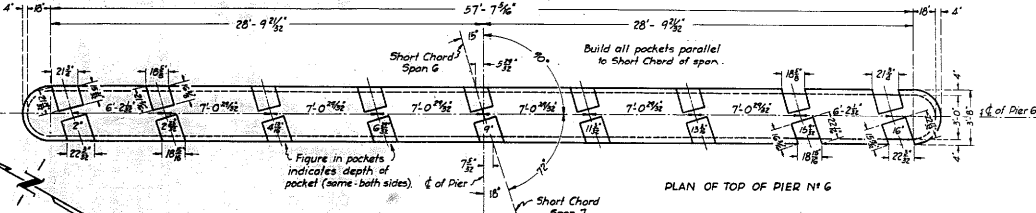
Dier	θ
N ^o 1	85°-30'
N ^o 2	85°-30'
N ^o 3	82°-30'
N ^o 4	79°-30'
N ^o 5	76°-30'
N ^o 6	73°-30'



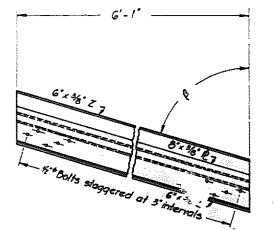
EXPANSION DEVICE UNDER ROADWAY



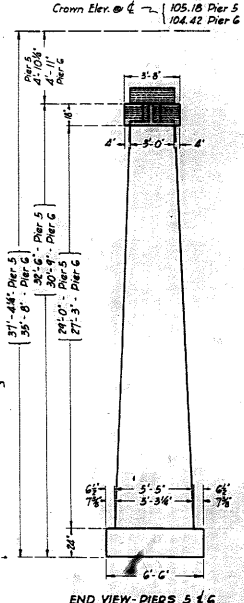
PLAN OF TOP OF PIER N^o 5



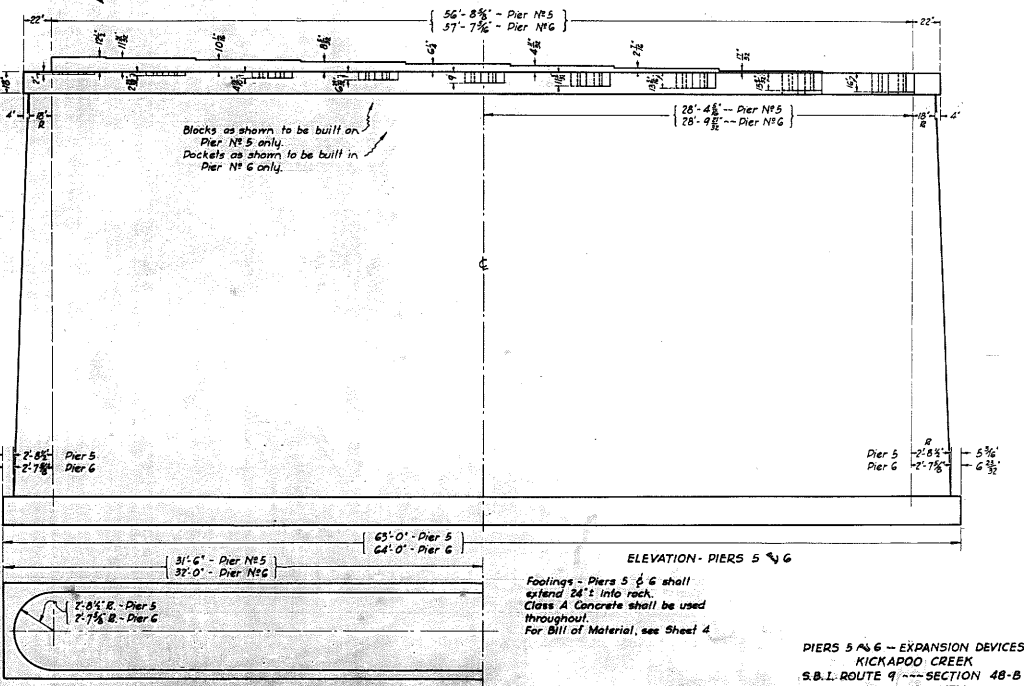
PLAN OF TOP OF PIER N^o 6



EXPANSION DEVICE UNDER WALKS



END VIEW - PIERS 5 & 6



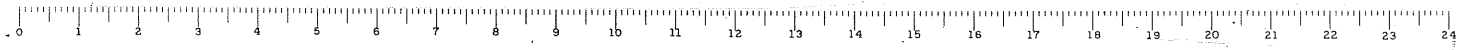
HALF-PLAN OF FOOTING - PIERS 5 & 6

ELEVATION - PIERS 5 & 6

Footings - Piers 5 & 6 shall extend 24' into rock. Class A Concrete shall be used throughout. For Bill of Material, see Sheet 4

PIERS 5 & 6 - EXPANSION DEVICES
KICKAPOO CREEK
S.B.I. ROUTE 9 - SECTION 48-B
PEORIA COUNTY
STA. 19+30

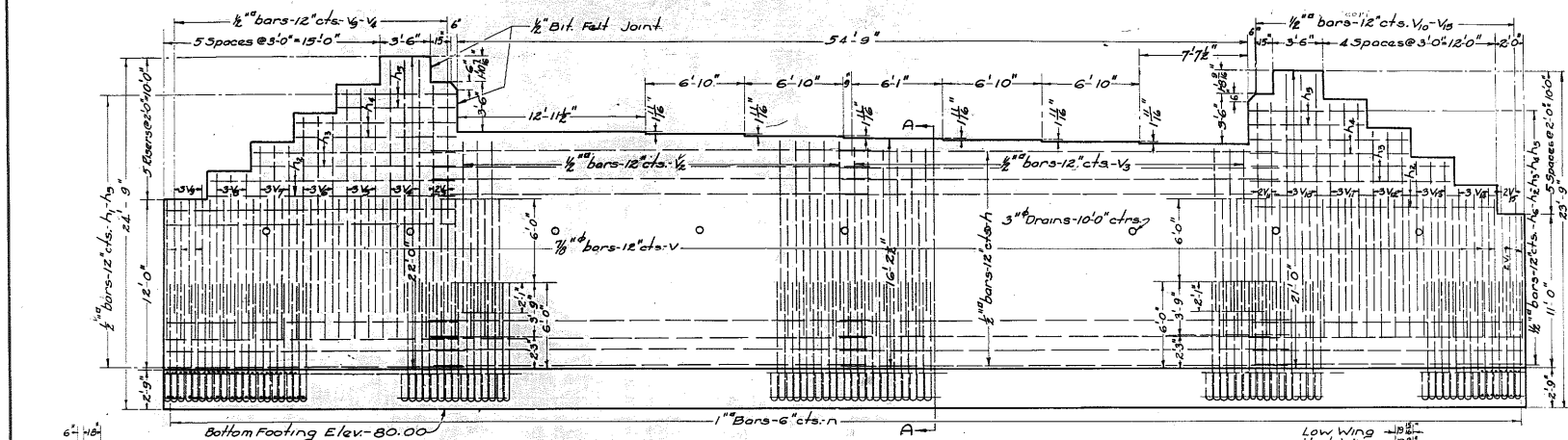
STANDARD	COMPUTED - <i>Thos. M. Mackay</i>	EXAMINED - <i>S-16-31</i>
CHECKED - <i>H.L.F. P.M.</i>		
DRAWN - <i>H.H.W.</i>		
CHECKED - <i>H.L.F.</i>		
SPECIAL	ASSEMBLED - <i>H.L.F.</i>	PASSED - <i>Thos. M. Mackay</i>
CHECKED -		APPROVED - <i>Frank J. [Signature]</i>



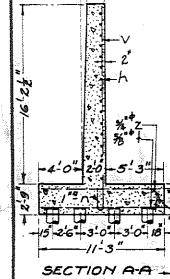
B.M. 3-Square on N.E. Tower Leg Base
 33' 2 1/2" S.F. 21+00 Elev. 161.21

STATE OF ILLINOIS
 DEPARTMENT OF PUBLIC WORKS & BUILDINGS
 DIVISION OF HIGHWAYS

PROJECT NO.	7	SECTION	48B	COUNTY	Peoria	ED.	Ed.	21
SHEET NO. 6								8 SHEETS



ELEVATION

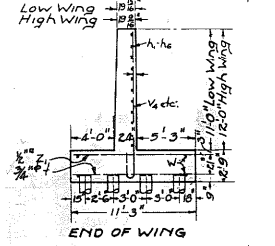


SECTION AA

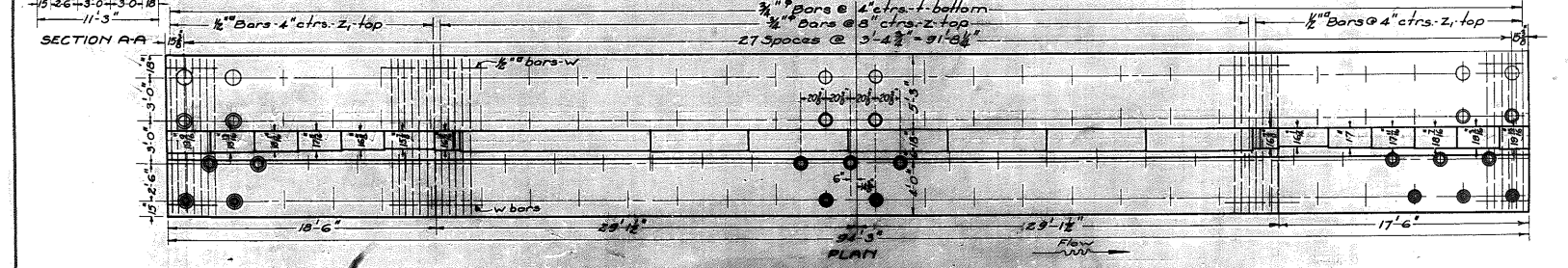
Untreated Piles - Estimated Length - 20'

Capacity	No. Req'd	Total Length
10 Ton	28	560 Lin. Ft.
12 Ton	27	540 "
15 Ton	28	560 "
18 Ton	28	560 "
Total Est. Piling		2220 Lin. Ft.

Notes:
 Class X Concrete to be used throughout.
 All reinforcing steel to be wired securely in place before concrete is poured.



END OF WING



PLAN

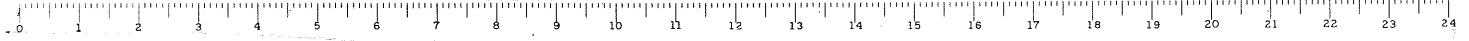
BILL OF MATERIAL

Bar No.	Size	Length	Bar No.	Size	Length	Bar No.	Size	Length
V	95	8'	Va	3	16'	h	4	110'
V	2	8'	Vb	5	18'	hb	4	8'-0"
V	27	12'-0"	Vc	3	12'-0"	hc	11	19'-0"
V	28	11'-6"	Vd	3	10'-9"	hd	183	10'-3"
V	5	17'-9"	Ve	3	8'-9"	he	289	11'-0"
V	5	12'-9"	Vf	2	2'-9"	hf	28	11'-0"
V	3	13'-9"	Vg	3	3'-0"	hg	108	11'-0"
V	3	11'-9"	Vh	4	2'-0"	hh	16	2'-0"
V	3	9'-9"	Vi	4	1'-0"	hi	1740	2'-0"
V	3	7'-9"	Vj	4	1'-0"	hj	1830	2'-0"

COMPUTED	H.H. Davis
CHECKED	M. H. D.
DRAWN	H.H.D.
CHECKED	A.L.E.
ASSEMBLED	
CHECKED	

EXAMINED 5-16-21
 APPROVED
 SPECIAL

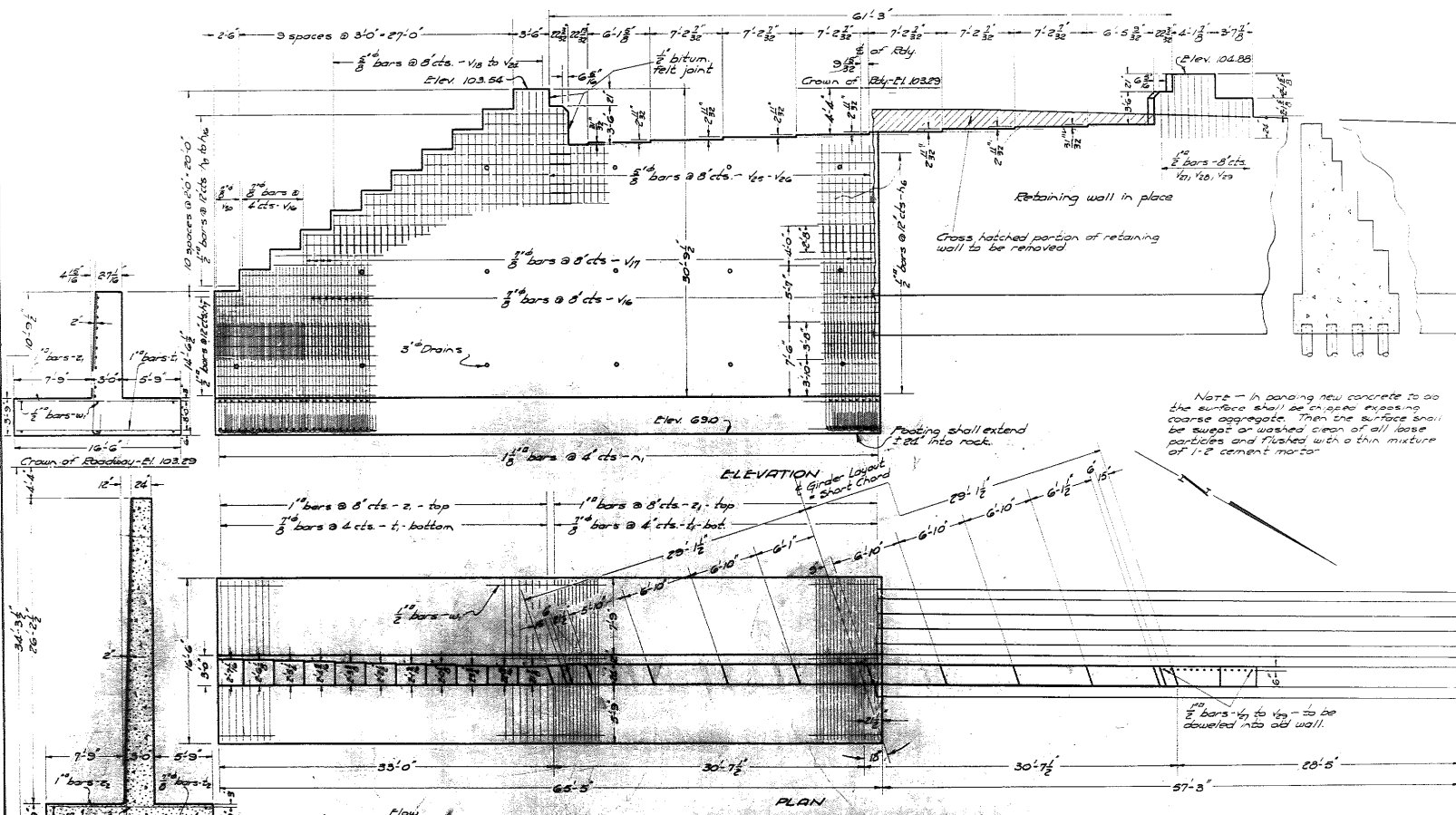
EAST ABUTMENT
 KICKAPOO CREEK
 S.B.T. ROUTE 19 SECTION 48B
 PEORIA COUNTY
 STATION 19+30



D.M. 3-Square on N.E. tower leg base
35 ft. Ft. Sta 2100 - Elev. 101.81

STATE OF ILLINOIS
DEPARTMENT OF PUBLIC WORKS & BUILDINGS
DIVISION OF HIGHWAYS

ROAD DIST. NO. 7	SEC. 18 B	COUNTY Florida	TOTAL SHEETS 24	SHEET NO. 7
ILLINOIS PER. AIR PROJECT				



Note - In pouring new concrete to abut the surface shall be rough exposing coarse aggregate. Then the surface shall be swept or washed clean of all loose particles and flushed with a thin mixture of 1:2 cement mortar.

BILL OF MATERIAL

Spec	No	Size	Length	Spec	No	Size	Length	Spec	No	Size	Length
1/2"	102	1/2"	9'-5"	1/2"	6	1/2"	6'-5"	1/2"	2	1/2"	10'-5"
3/8"	80	3/8"	13'-5"	3/8"	2	3/8"	3'-5"	3/8"	2	3/8"	7'-5"
3/8"	5	3/8"	4'-0"	3/8"	3	3/8"	6'-0"	3/8"	2	3/8"	10'-5"
3/8"	5	3/8"	6'-0"	3/8"	30	3/8"	11'-0"	3/8"	185	3/8"	16'-5"
3/8"	2	3/8"	10'-5"	3/8"	22	3/8"	14'-5"	3/8"	30	3/8"	16'-5"
3/8"	2	3/8"	15'-0"	3/8"	4	3/8"	12'-5"	3/8"	1	3/8"	12'-5"
3/8"	4	3/8"	14'-0"	3/8"	2	3/8"	20'-5"	3/8"	185	3/8"	14'-5"
3/8"	5	3/8"	16'-0"	3/8"	2	3/8"	22'-5"	3/8"	18	3/8"	23'-0"
3/8"	3	3/8"	16'-0"	3/8"	2	3/8"	20'-5"	3/8"	1	3/8"	23'-0"
3/8"	5	3/8"	16'-0"	3/8"	2	3/8"	20'-5"	3/8"	1	3/8"	23'-0"
3/8"	2	3/8"	20'-5"	3/8"	2	3/8"	16'-5"				

Note - Class X concrete shall be used throughout. All reinforcing steel to be wired securely in place before concrete is poured.

WEST ABUTMENT
KICKAPOO CREEK
S.D.M. ROUTE 9 - S.E.C. 20 B
FLORIDA COUNTY
STATION 19+30

SECTION OF MAIN WALL @ 2'

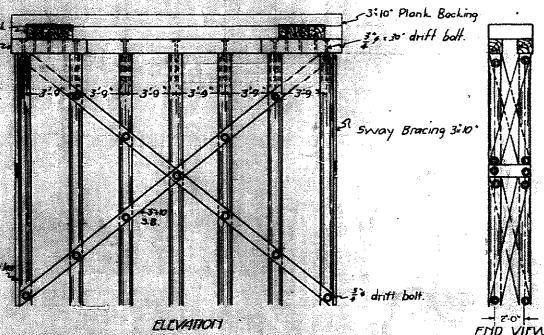
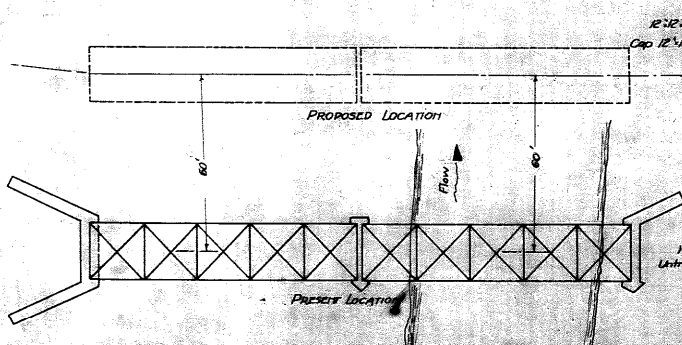
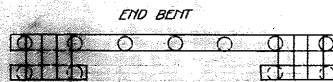
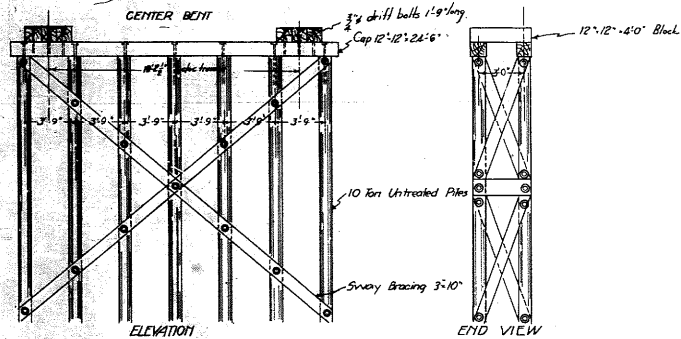
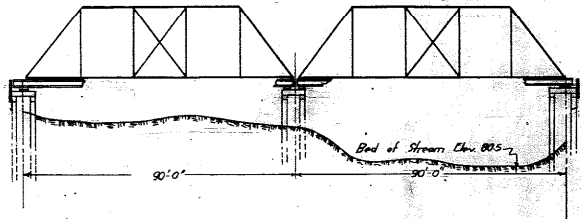
COMPUTED - F.A. Schmitt
CHECKED - H.W. Malley
DRAWN - F.L.S.
CHECKED - J.P.M.

EXAMINED - H.W. Malley
PASSED - H.E. Sullivan
APPROVED - Frank J. Smith

STATE OF ILLINOIS
DEPARTMENT OF PUBLIC WORKS & BUILDINGS
DIVISION OF HIGHWAYS

SECTION	SHEET	COUNTY	TOWNSHIP	RANGE
48B	2A	Peoria	2A	2B

SHEET NO. 8
8 SHEETS



Note:
Two existing truss spans to be moved to new location.
Piles to be 10 Ton Untreated, 12" Dia., 8' Top.
Timber to be untreated yellow pine.
All bracing 3' x 10' timber bolted to each pile with 3/4" bolts.
Washers shall be used under heads of nuts of bolts where they come in contact with surface of wood.

Piles shall be driven to a minimum penetration of 15 feet and a capacity of 10 tons.

COMPUTED	— H.H.H.
DESIGNED	— J.W.
CHECKED	— J.W.
APPROVED	— J.W.

EXAMINED 5-16-30
DRAWN J. J. ...
APPROVED [Signature]
CHECKED [Signature]

TEMPORARY DETOUR
KICKAPOO CREEK
S.B.1.RT.9 SECTION 48-B
STA. 19+30

