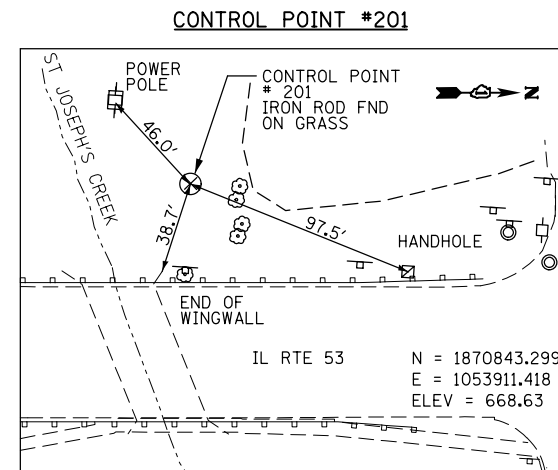
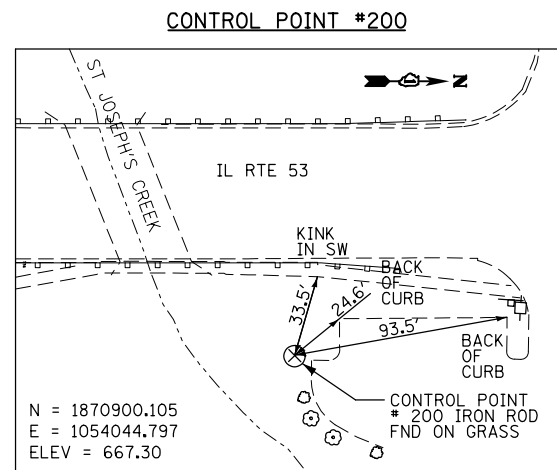
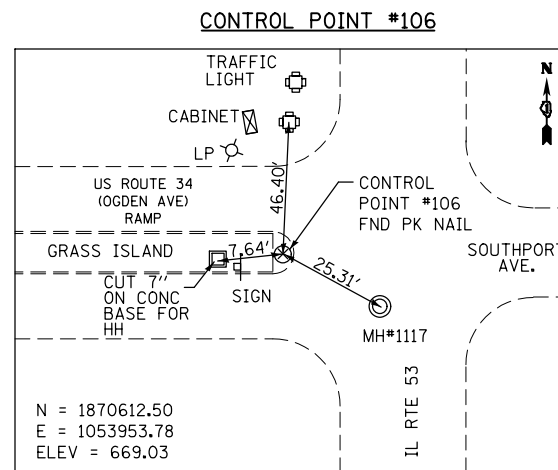
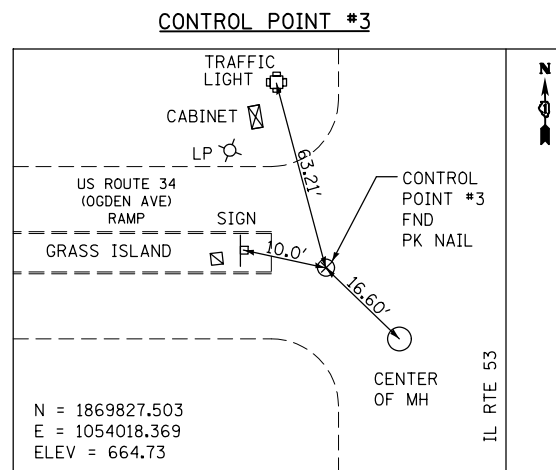


BENCHMARK:
 BM#105
 SQUARE CUT ON EASTERLY CORNER OF CONCRETE
 BASE FOR STREET LIGHTING CABINET AT NW CORNER
 OF IL RTE 53 AND EXIT RAMP TO OGDEN AVE.
 ELEV = 669.02

ALIGNMENT COORDINATES - IL RTE 53 (LINCOLN AVENUE)

	STATION	NORTHING	EASTING
	95+00	1870329.803	1054014.417
BEG.	98+63	1870692.077	1053991.476
PI	100+00.26	1870829.063	1053982.802
END	101+65	1870993.520	1053973.148
	104+00	1871228.116	1053959.377



FILE NAME =
 ...\\D168M83-sht-otb.dgn



DESIGNED - RJD	REVISED -
DRAWN - GEW	REVISED -
CHECKED - RJD	REVISED -
DATE - 8/3/2012	REVISED -

**STATE OF ILLINOIS
 DEPARTMENT OF TRANSPORTATION**

**IL ROUTE 53 OVER ST JOSEPH'S CREEK
 ALIGNMENT, TIES AND BENCHMARKS**

SCALE: 1"=50' SHEET NO. 1 OF 1 SHEETS STA. TO STA.

F.A.P. RTE.	SECTION	COUNTY	TOTAL SHEETS	SHEET NO.
870	534R-B	DUPAGE	53	8
CONTRACT NO. 60M83			ILLINOIS FED. AID PROJECT	