

DATE	
BY	
PLAN	SURVEYED
	PLOTTED
	ALIGNED
	CHECKED
	FILE NAME
NO.	

DATE	
BY	
PROFILE	SURVEYED
	PLOTTED
	GRADES CHECKED
	STRUCTURE NOTATIONS CHECKED
NO.	

STRUCTURE TABLE										
NO.	STATION	OFFSET	TYPE	FRAME	FST	RIM	N. INV.	E. INV.	S. INV.	W. INV.
1	98+65	46.0' RT	MH-A4	1-OL	*	666.39	663.84	663.84		
2	99+74.4	94.2' RT	FES 15	--	--	663.50				
3	100+16	52.7' LT	FES 18	--	--	664.00				
4	100+19	36.0' LT	MH-A6	1-CL	*	668.50	664.20			664.20
5	100+63	49.6' RT	EX-FES-36	--	--	662.05				
6	100+77	44.9' RT	EX-MH	--	--	668.27	661.87		661.87	
7	101+45	44.3' RT	MH-A4	1-CL		668.90	662.0		664.29	662.0
8	101+45	26.5' RT	CB-A4	1-OL		669.13		664.35	664.35	664.35
9	101+33	27.0' RT	INL-A	1-OL		669.14	664.42			
10	101+45	30.0' LT	INL-A	1-OL		669.08	664.62			

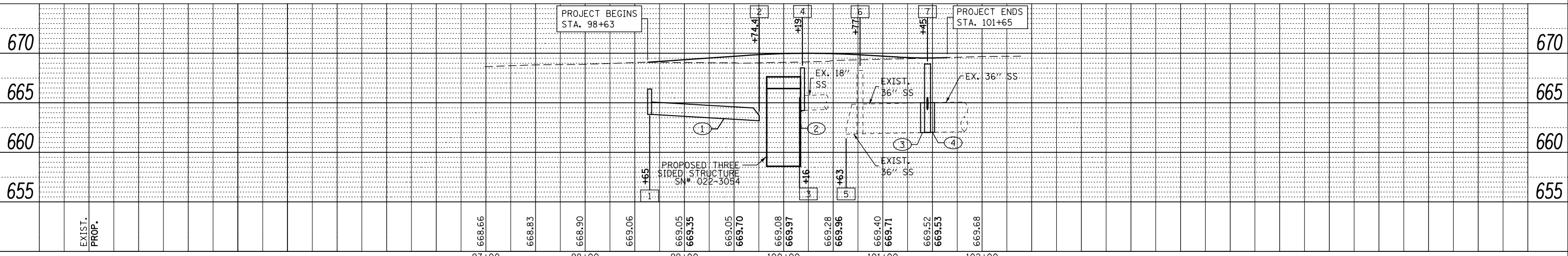
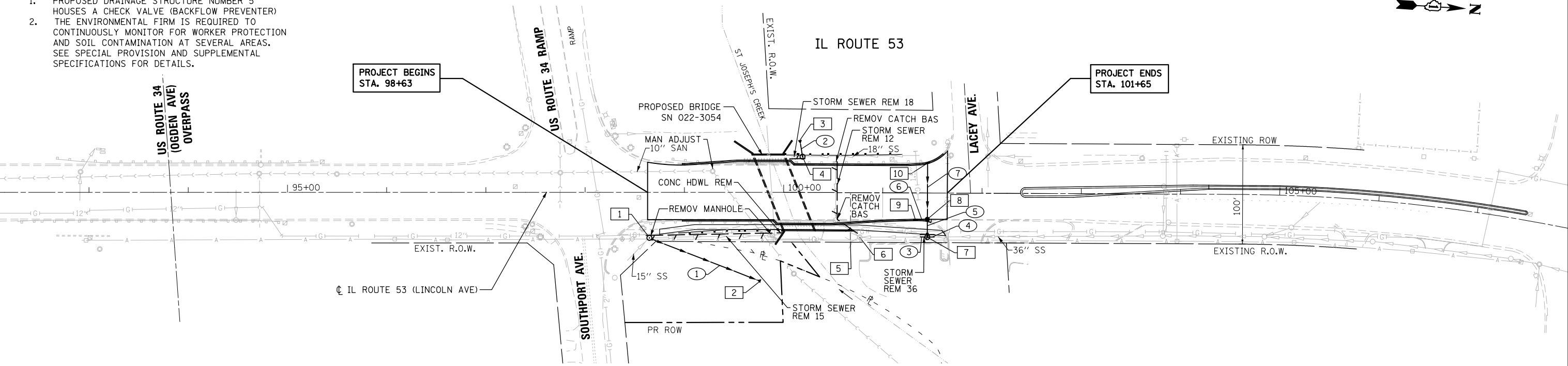
PIPE TABLE										
NO.	TYPE	UPSTREAM STATION	DOWNSTREAM STATION	MAT.	SIZE	SLOPE	LIN. FT.	TBF	CYD.	
1	SS-T1-A	98+65	46.0 RT	100+16.0	52.7 LT	RCP	15"	-0.09%	172'	--
2	SS-T1-A	100+63	49.6 RT	100+19	36.0 LT	RCP	18"	-2.32%	87'	--
3	SS-T1-A	101+45	26.5 RT	101+38	26.5 RT	RCP	36"	0.10%	6'	6
4	SS-T1-A	101+52	26.5 RT	101+45	26.5 RT	RCP	36"	0.10%	6'	6
5	SS-T1-A	101+33	27.0 RT	101+45	26.5 RT	RCP	15"	0.78%	9'	4
6	SS-T1-A	101+45	30.0 LT	101+33	27.0 RT	RCP	12"	0.36%	56'	12
7	SS-T1-A	101+45	30.0 LT	101+33	27.0 RT	RCP	12"	0.36%	56'	12

**ABBREVIATIONS**

- 1-CL FRAMES & LIDS, TYPE 1, CLOSED LID
- 1-OL FRAMES & LIDS, TYPE 1, OPEN LID
- FES # PRECAST REINFORCED CONCRETE FLARED END SECTION FOR #'' PIPES
- MH-A# MANHOLES, TYPE A, #FT DIA
- WWALL PIPE OUTLETS THROUGH BRIDGE WINGWALL
- ES PPW-36 REINF. CONC. END SECTION WITH PARRALLEL WINGWALLS FOR 36'' PIPES
- EX-MH EXISTING MANHOLE, TO REMAIN
- CB-A4 CATCH BASINS, TYPE A, 4' DIA
- INL-A INLET, TYPE A
- FST PRECAST REINFORCED CONCRETE FLAT SLAB TOP
- RCP PRECAST REINFORCED CONCRETE PIPE
- SS-T1-A STORM SEWER, TYPE 1, CLASS A
- TBF TRENCH BACKFILL

- STORM SEWER KEY**
- 10 DRAINAGE STRUCTURE NUMBER
  - 10 STORM SEWER NUMBER

- DRAINAGE NOTES:**
- PROPOSED DRAINAGE STRUCTURE NUMBER 5 HOUSES A CHECK VALVE (BACKFLOW PREVENTER)
  - THE ENVIRONMENTAL FIRM IS REQUIRED TO CONTINUOUSLY MONITOR FOR WORKER PROTECTION AND SOIL CONTAMINATION AT SEVERAL AREAS. SEE SPECIAL PROVISION AND SUPPLEMENTAL SPECIFICATIONS FOR DETAILS.



FILE NAME = ...\\D160M83-sht-drain.dgn



DESIGNED - NWS	REVISED -
DRAWN - GEW	REVISED -
CHECKED - RJD	REVISED -
DATE - 8/3/2012	REVISED -

**STATE OF ILLINOIS  
DEPARTMENT OF TRANSPORTATION**

**IL ROUTE 53 OVER ST JOSEPH'S CREEK  
DRAINAGE AND UTILITY PLAN**

SCALE: 1" = 50' SHEET NO. 1 OF 1 SHEETS STA. 98+63 TO STA. 101+65

F.A.P. RTE.	SECTION	COUNTY	TOTAL SHEETS	SHEET NO.
870	534 R-B	DuPAGE	53	15
CONTRACT NO. 60M83				
ILLINOIS FED. AID PROJECT				