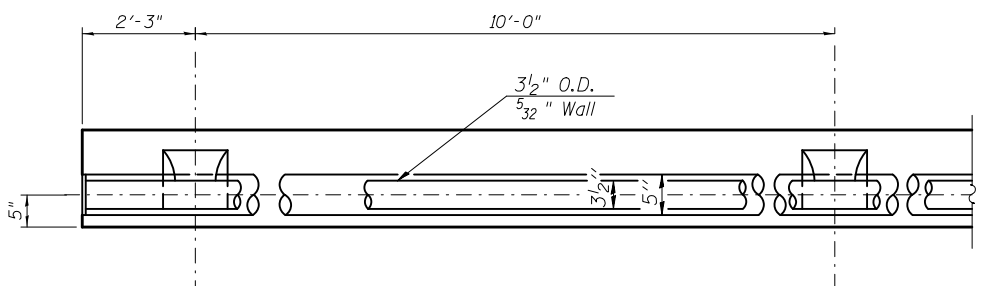
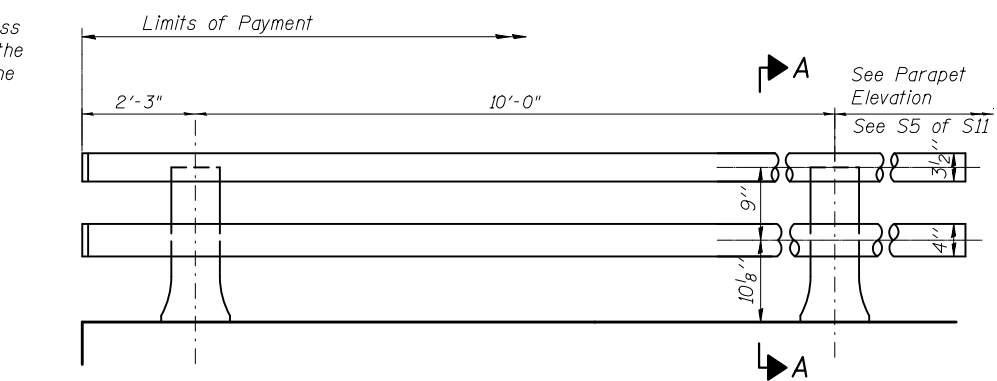
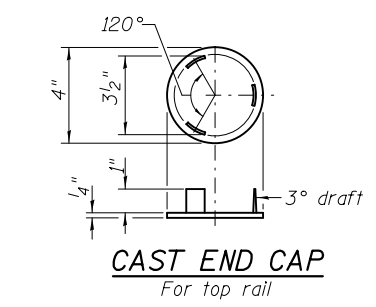
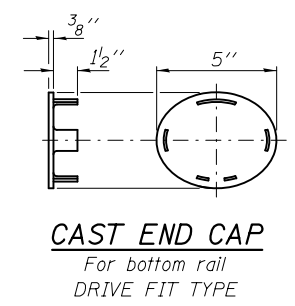
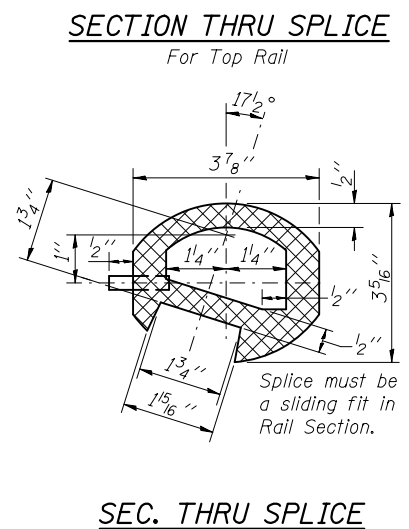
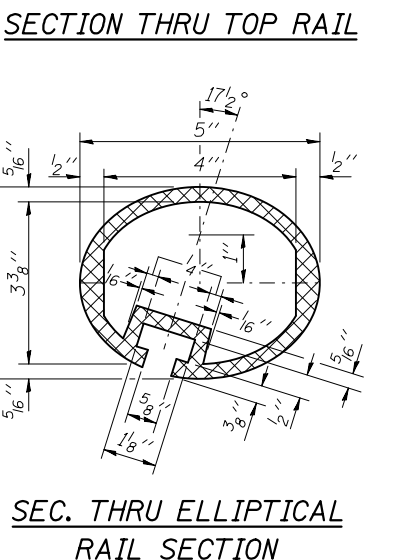
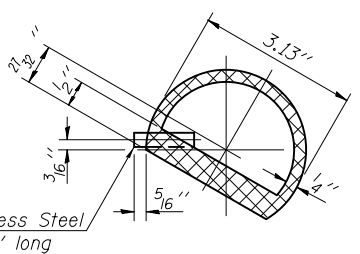
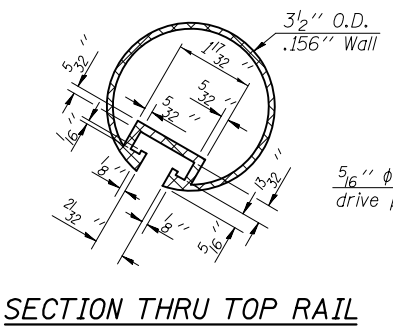
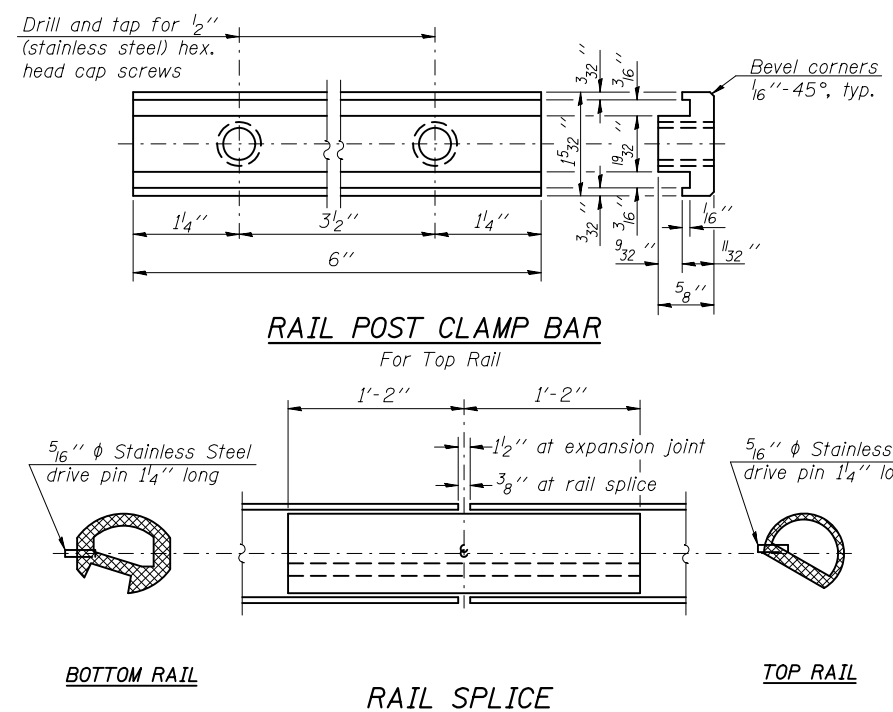


* In lieu of the cast-in-place anchor device shown, the Contractor has the option of drilling and setting stainless steel anchor rods of the same diameter and grade as the specified cap screws according to Article 509.06 of the Standard Specifications. Embedment shall be according to the manufacturer's specifications.

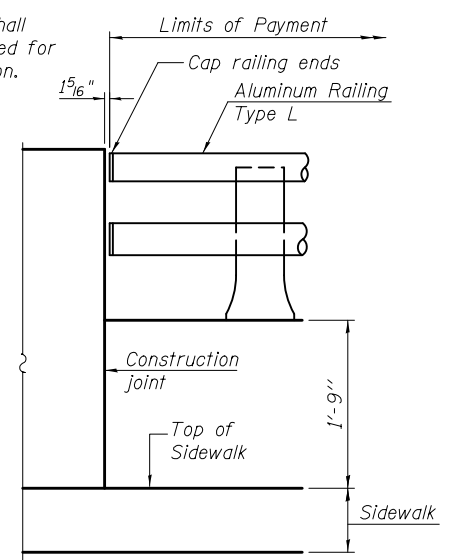


RAIL POST DETAILS

RAIL TERMINAL SECTION



Note:
 The end rail post shall be set back as required for the terminal rail section.



Notes:
 All Posts shall be normal to parapet.
 All joints in rail shall be spliced per detail.
 All exposed rail ends shall be capped per detail.
 Provide 1-1/8" and 2-1/8" Aluminum Shims for 25% of the Posts. Rail elements shall be parallel to Grade-high spots will be ground and low spots shimmed.
 See sheet S6 & S10 of S13 for rail post spacing.

RAIL END TREATMENT FOR TYPE 5 AND 6 TERMINAL

BILL OF MATERIAL

Item	Unit	Quantity
Aluminum Railing, Type L	Foot	87