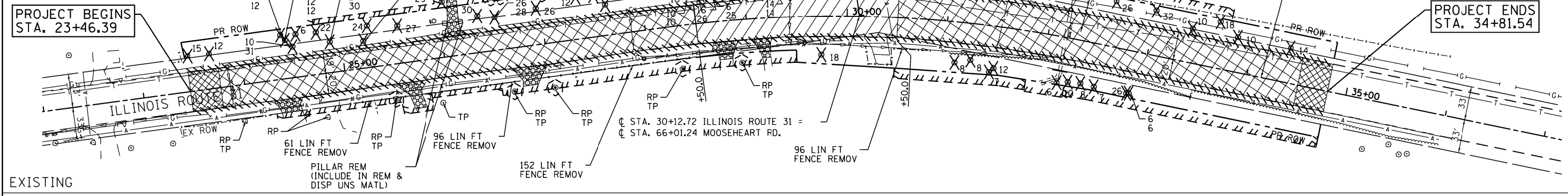
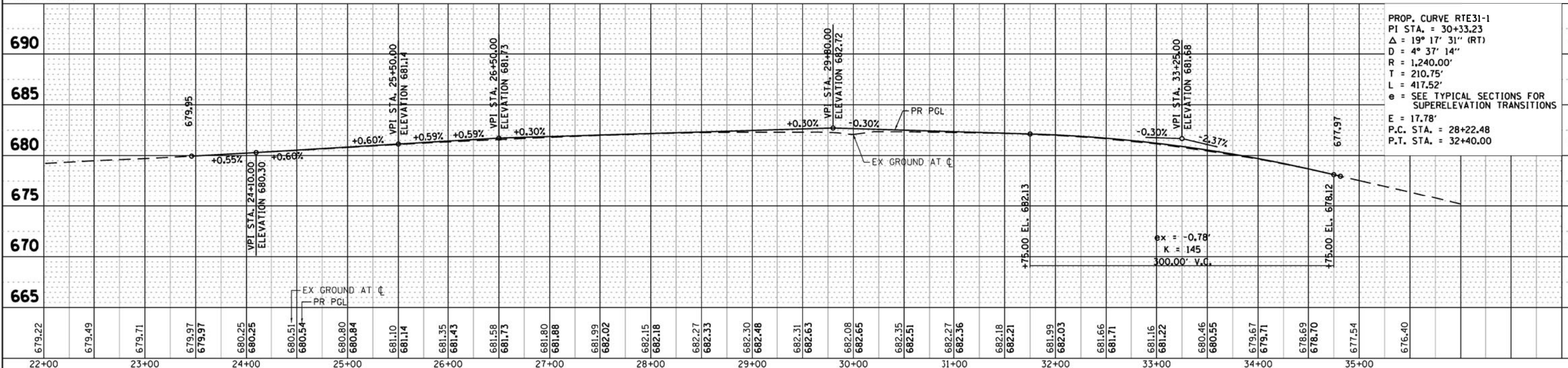
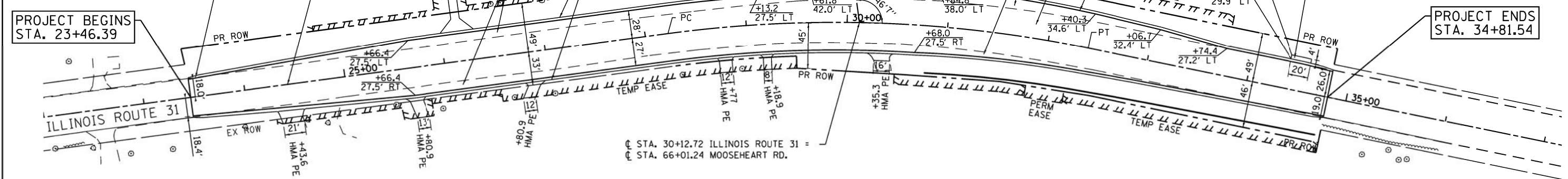


	HOT-MIX ASPHALT SURFACE REMOVAL - 2"		COMBINATION CURB & GUTTER REMOVAL		TREE TRUNK PROTECTION
	HOT-MIX ASPHALT SURFACE REMOVAL - BUTT JOINT		TREE REMOVAL (WITH SIZE)		RP TREE ROOT PRUNING
	DRIVEWAY PAVEMENT REMOVAL		HOT-MIX ASPHALT SURFACE REMOVAL - VARIABLE DEPTH (0.5'-2')		TP TREE PRUNING

NOTES:
 1. SEE DRAINAGE AND UTILITY PLANS FOR RELATED REMOVALS
 2. REFER TO PLAT OF HIGHWAYS FOR RIGHT OF WAY INFORMATION



- EXISTING**
- WIDENING**
 P HMA SC "F" N90, 2"
 P HMA BC IL19.0 N90, 2 1/4"
 HMA BASE CSE 6 1/4
 AGG SUBGRADE IMPR 12
 - RESURFACING**
 P HMA SC "F" N90, 2"
 P HMA BC IL19.0 N90, 2 1/4" - 4"
 LEV BIND MM N90, 3/4" - 2 1/4"



DATE	
BY	
PLAN	
NO.	
DATE	
BY	
PROFILE	
NO.	

DATE	
BY	
PROFILE	
NO.	

7/27/2012 2:16:15 PM
 86100196.14-prp-01.dgn
 s:\projects\60606\14-prp-01.dgn
 s:\projects\60606\14-prp-01.dgn

	USER NAME = spernal FILE NAME = 86100196.14-prp-01.dgn PLOT SCALE = 1"=50' PLOT DATE = 7/27/2012	DESIGNED - C. HARTKE DRAWN - S. PERNA CHECKED - T. HAMILTON DATE - 7/20/2012	REVISED - REVISED - S. LIPKIE 7/2012 REVISED - C. HARTKE 8/3/2012 REVISED -	STATE OF ILLINOIS DEPARTMENT OF TRANSPORTATION		ROADWAY PLAN AND PROFILE ILLINOIS ROUTE 31		F.A. RTE. = 3887 SECTION = AR-N-2 COUNTY = KANE TOTAL SHEETS = 85 SHEET NO. = 20	CONTRACT NO. = 60P65
	SCALE: 1"=50'		SHEET NO. 1 OF 2 SHEETS		STA. 23+46.39 TO STA. 27+00.00		FED. ROAD DIST. NO. ILLINOIS FED. AID PROJECT		