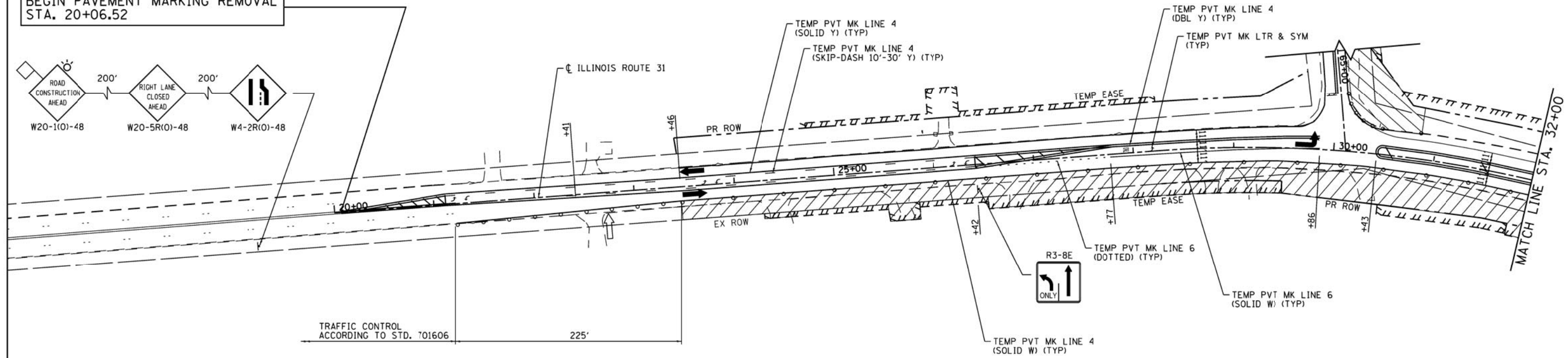
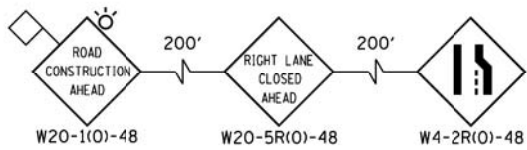
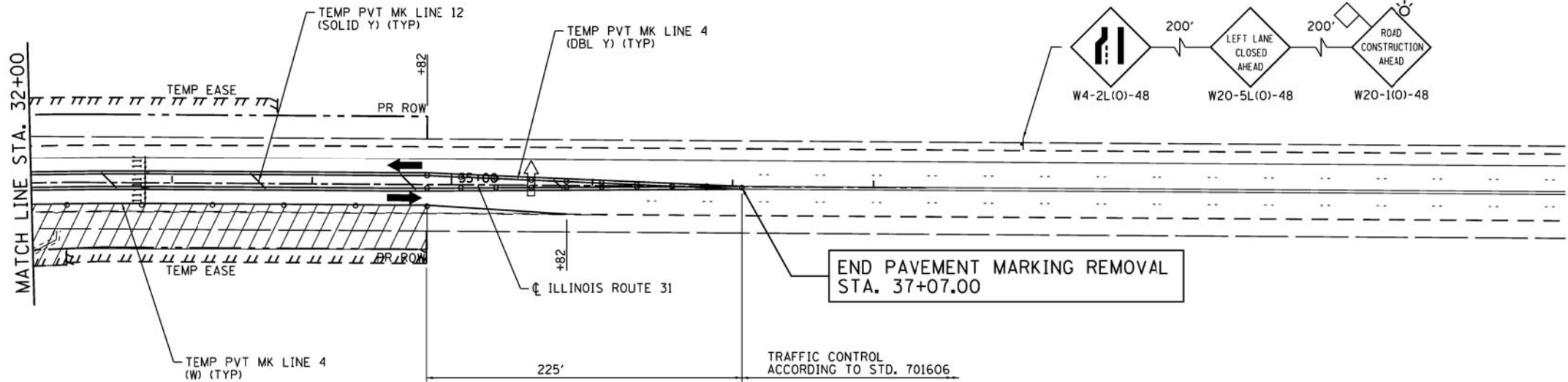


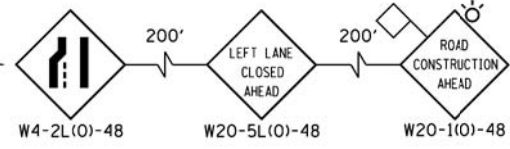
BEGIN PAVEMENT MARKING REMOVAL
STA. 20+06.52



TRAFFIC CONTROL
ACCORDING TO STD. 701606



END PAVEMENT MARKING REMOVAL
STA. 37+07.00



TRAFFIC CONTROL
ACCORDING TO STD. 701606

LEGEND:

	WORK ZONE		TYPE II BARRICADES OR DRUMS WITH STEADY BURNING LIGHTS @ 50 FT CENTERS ALONG ROADWAY TANGENTS, 25 FT CENTERS ALONG TAPERS, AND 10 FT CENTERS ALONG RADII
	HOT-MIX ASPHALT SURFACE REMOVAL, SPECIAL		
	DIRECTION OF TRAFFIC		
	ARROW BOARD		



COMPANY NAME: HRGreen
 PROJECT CONTACT: S. PERNAL
 DATE PLOTTED: 6/27/2012 9:06:03 AM
 FILE NAME: 8610019614-m0101-01.dgn
 PLOT DRIVER: paf,af
 PEN TABLE: standard-trans.tbl



USER NAME = spernal	DESIGNED - C. HARTKE	REVISED -
	DRAWN - S. PERNAL	REVISED -
PLOT SCALE = 1"=50'	CHECKED - T. HAMILTON	REVISED -
PLOT DATE = 6/27/2012	DATE - 6/27/12	REVISED -

STATE OF ILLINOIS
DEPARTMENT OF TRANSPORTATION

SUGGESTED MAINTENANCE OF TRAFFIC
ILLINOIS ROUTE 31 STAGE 1

SCALE: 1"=50' SHEET NO. 4 OF 7 SHEETS STA. 20+06.52 TO STA. 37+07.00

F.A. RTE.	SECTION	COUNTY	TOTAL SHEETS	SHEET NO.
3887	AR-N-2	KANE	85	25
CONTRACT NO. 60P65			ILLINOIS FED. AID PROJECT	