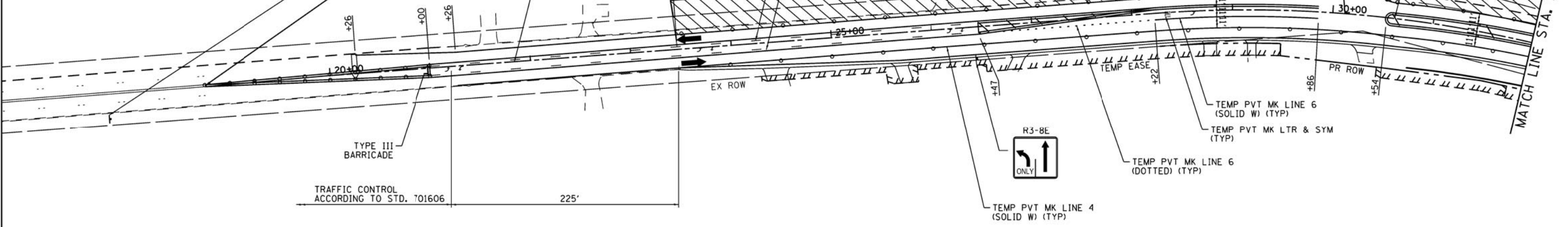
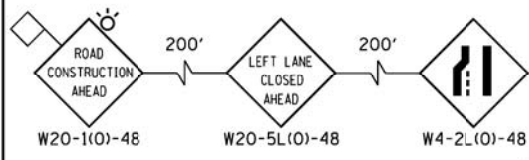
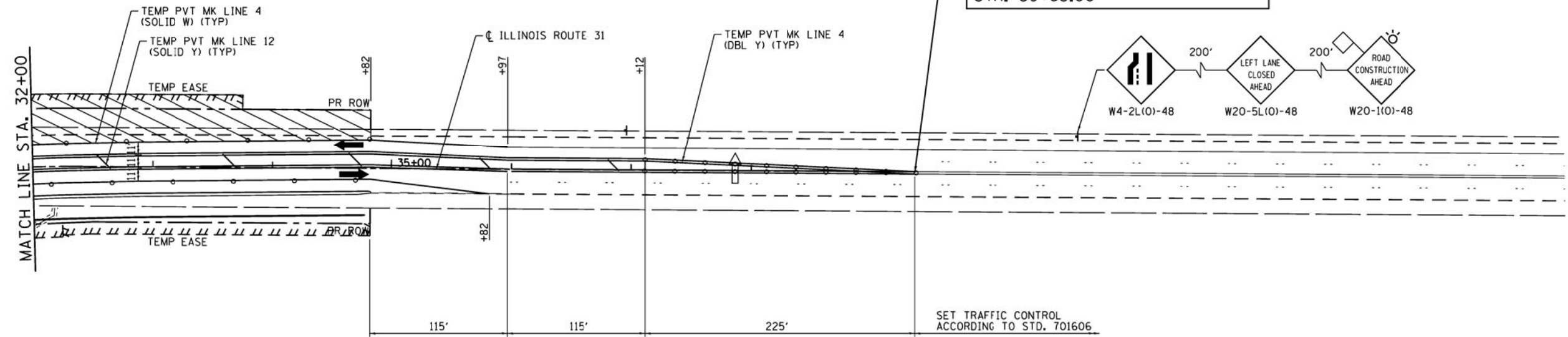




BEGIN PAVEMENT MARKING REMOVAL
STA. 18+72.00

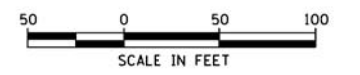


END PAVEMENT MARKING REMOVAL
STA. 39+63.00



LEGEND:

- WORK ZONE
- HOT-MIX ASPHALT SURFACE REMOVAL, SPECIAL
- DIRECTION OF TRAFFIC
- ARROW BOARD
- TYPE II BARRICADES OR DRUMS WITH STEADY BURNING LIGHTS @ 50 FT CENTERS ALONG ROADWAY TANGENTS, 25 FT CENTERS ALONG TAPERS, AND 10 FT CENTERS ALONG RADII



COMPANY NAME: HRGreen
PROJECT CONTACT: HRGreen.com
DATE PLOTTED: 6/27/2012 9:16:55 AM
FILE NAME: 8610019614-mo102-01.dgn
PLOT DRIVER: pdf.plt
PEN TABLE: standard-trans.tbl



USER NAME = spernal	DESIGNED - C. HARTKE	REVISED -
	DRAWN - S. PERNAL	REVISED -
PLOT SCALE = 1"=50'	CHECKED - T. HAMILTON	REVISED -
PLOT DATE = 6/27/2012	DATE - 6/27/12	REVISED -

STATE OF ILLINOIS
DEPARTMENT OF TRANSPORTATION

SUGGESTED MAINTENANCE OF TRAFFIC
ILLINOIS ROUTE 31 STAGE 2
SCALE: 1"=50' SHEET NO. 6 OF 7 SHEETS STA. 18+72.00 TO STA. 39+63.00

F.A. RTE.	SECTION	COUNTY	TOTAL SHEETS	SHEET NO.
3887	AR-N-2	KANE	85	27
CONTRACT NO. 60P65			ILLINOIS FED. AID PROJECT	