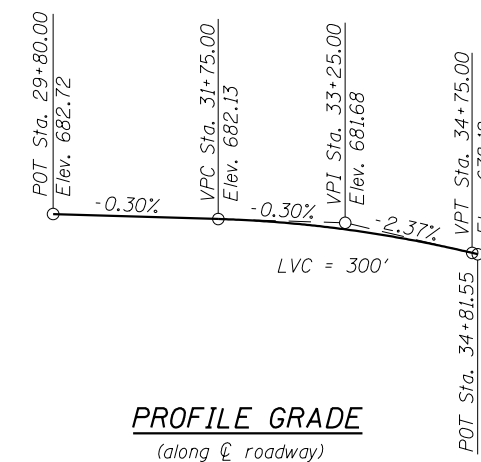


GENERAL NOTES

1. Reinforcement bars designated (E) shall be epoxy coated.
2. Top of concrete anchorage slab shall be brush finished according to Article 503.16(b)(1) of the Standard Specifications for "sidewalks".
3. All cast-in-place concrete edges shall have a 3/4" chamfer.

TOTAL BILL OF MATERIAL

Item	Unit	Total
Stone Riprap, Class A4	Sq. Yd.	21
Filter Fabric	Sq. Yd.	21
Structure Excavation	Cu. Yd.	515
Concrete Structures	Cu. Yd.	7.4
Concrete Superstructure	Cu. Yd.	161.0
Protective Coat	Sq. Yd.	406
Reinforcement Bars	Pound	750
Reinforcement Bars, Epoxy Coated	Pound	21650
Parapet Railing	Foot	375
Geocomposite Wall Drain	Sq. Yd.	16
Mechanically Stabilized Earth Retaining Wall	Sq. Ft.	2355

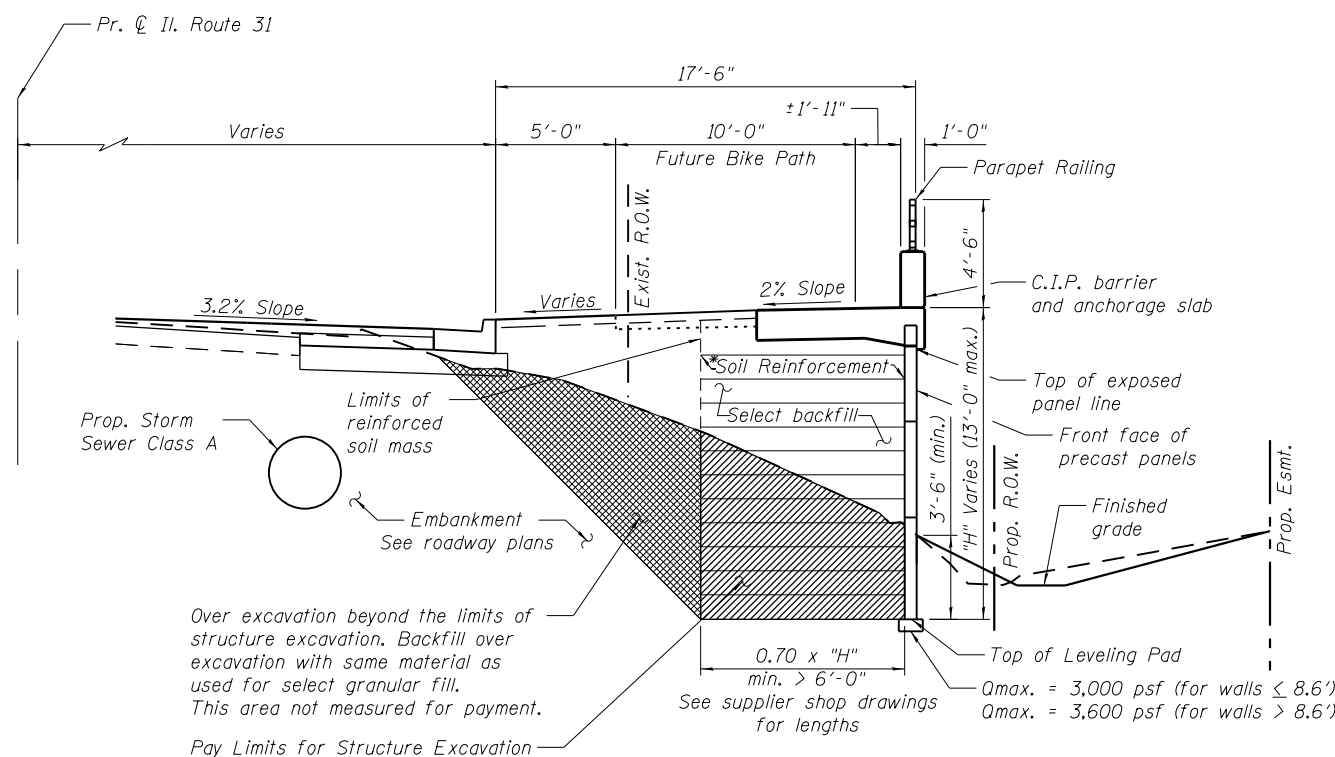


INDEX OF SHEETS

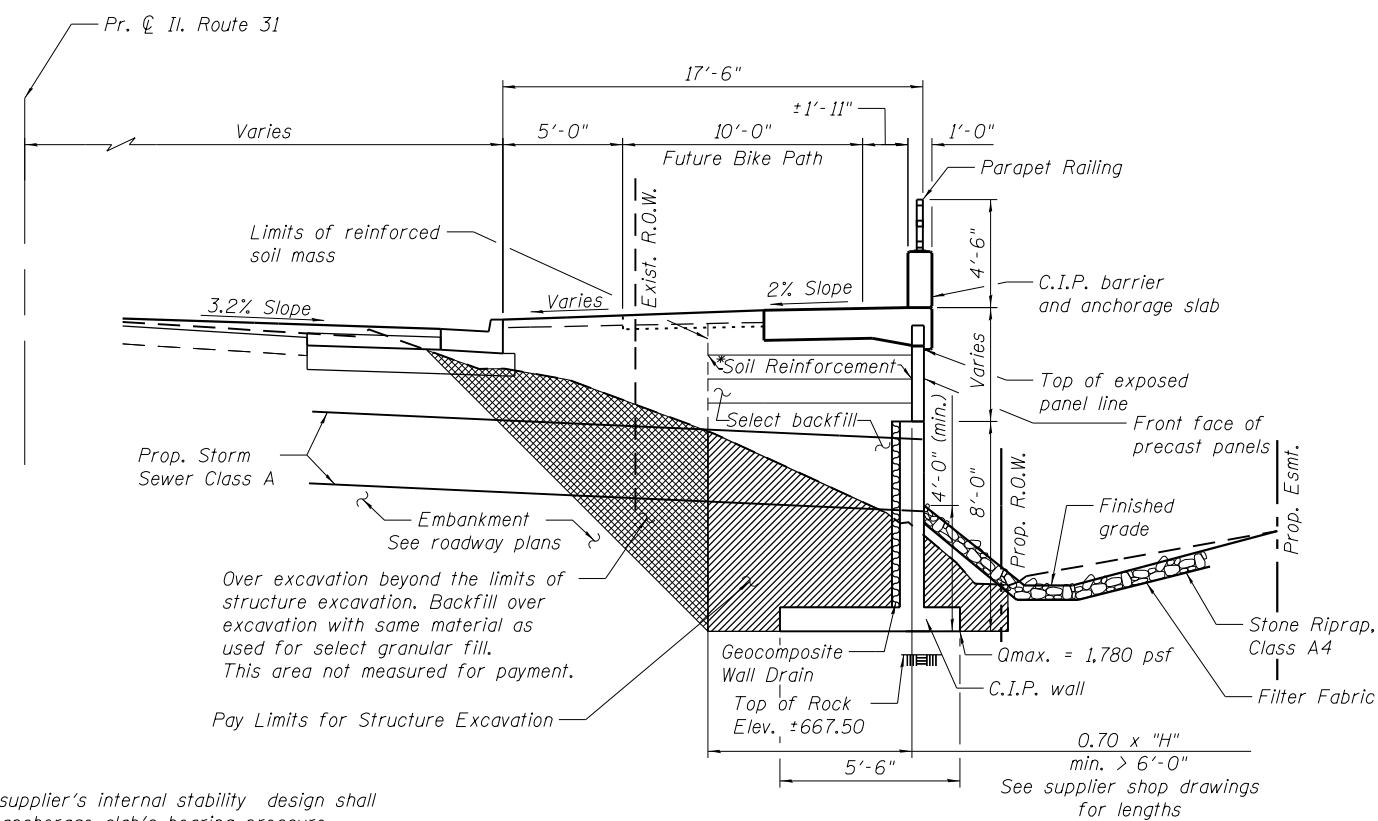
- S-1 General Plan and Elevation
- S-2 General Data
- S-3 Concrete Details
- S-4 Parapet Railing
- S-5 Boring Logs

CURVE DATA

F.A.U. Route 3887 (IL Rte 31)
 P.I. Sta. = 30+33.23
 $\Delta = 19^\circ 17' 31''$ (RT)
 $D = 4^\circ 37' 14''$
 $R = 1,240.00'$
 $T = 210.75'$
 $L = 417.52'$
 $E = 17.78'$
 P.C. STA. = 28+22.48
 P.T. STA. = 32+40.00



TYPICAL SECTION



SECTION A-A

* The M.S.E. wall supplier's internal stability design shall account for the anchorage slab's bearing pressure surcharge of 1.0 ksf and horizontal sliding force of 0.5 kips/ft. of wall

COMPANY NAME: HRGreen
 PROJECT CONTACT: HRGreen.com
 DATE PLOTTED: 8/1/2012 3:04:15 PM
 FILE NAME: 86100196_14-Wgn-01.dgn
 PLOT DRIVER: pafach
 PEN TABLE: Struct.tbl



USER NAME = whood	DESIGNED - M. HARDING	REVISED M. HARDING 8/3/2012
	CHECKED - R. DAVIES	REVISED
PLOT SCALE =	DRAWN - W. HOOD	REVISED
PLOT DATE = 8/1/2012	CHECKED -	REVISED

STATE OF ILLINOIS
 DEPARTMENT OF TRANSPORTATION

GENERAL DATA
 STRUCTURE NO. 045-W015

SHEET NO. S-2 OF S-5 SHEETS

F.A. RTE.	SECTION	COUNTY	TOTAL SHEETS	SHEET NO.
3887	AR-N-2	KANE	85	46
CONTRACT NO. 60P65				

ILLINOIS FED. AID PROJECT