

SCHEDULE OF QUANTITIES

SIGN PANEL - TYPE 1	SQ FT	7.50
SIGN PANEL - TYPE 2	SQ FT	21.00
SERVICE INSTALLATION - POLE MOUNTED	EACH	1
UNDERGROUND CONDUIT, GALVANIZED STEEL, 2" DIA.	FOOT	869.0
UNDERGROUND CONDUIT, GALVANIZED STEEL, 2 1/2" DIA.	FOOT	231.0
UNDERGROUND CONDUIT, GALVANIZED STEEL, 3" DIA.	FOOT	46.0
UNDERGROUND CONDUIT, GALVANIZED STEEL, 4" DIA.	FOOT	213.0
HANDHOLE	EACH	4
HEAVY-DUTY HANDHOLE	EACH	2
DOUBLE HANDHOLE	EACH	1
ELECTRIC CABLE IN CONDUIT, SIGNAL NO. 14 3C	FOOT	428.5
ELECTRIC CABLE IN CONDUIT, SIGNAL NO. 14 5C	FOOT	2,055.0
ELECTRIC CABLE IN CONDUIT, SIGNAL NO. 14 7C	FOOT	759.0
ELECTRIC CABLE IN CONDUIT, LEAD-IN, NO. 14 1 PAIR	FOOT	1,222.5
ELECTRIC CABLE IN CONDUIT, SERVICE, NO. 6 2C	FOOT	144.5
TRAFFIC SIGNAL POST, GALVANIZED STEEL 14 FT.	EACH	1
TRAFFIC SIGNAL POST, GALVANIZED STEEL 16 FT.	EACH	3
TRAFFIC SIGNAL POST, GALVANIZED STEEL 18 FT.	EACH	1
STEEL MAST ARM ASSEMBLY AND POLE, 44 FT.	EACH	2
CONCRETE FOUNDATION, TYPE A	FOOT	20.0
CONCRETE FOUNDATION, TYPE C	FOOT	4.0
CONCRETE FOUNDATION, TYPE E 36-INCH DIAMETER	FOOT	26.0
SIGNAL HEAD, LED, 1-FACE, 3-SECTION, MAST-ARM MOUNTED	EACH	4
SIGNAL HEAD, LED, 1-FACE, 3-SECTION, BRACKET MOUNTED	EACH	2
SIGNAL HEAD, LED, 1-FACE, 5-SECTION, BRACKET MOUNTED	EACH	2
SIGNAL HEAD, LED, 1-FACE, 5-SECTION, MAST-ARM MOUNTED	EACH	2
SIGNAL HEAD, LED, 2-FACE, 3-SECTION, BRACKET MOUNTED	EACH	1
SIGNAL HEAD, LED, 2-FACE, 5-SECTION, BRACKET MOUNTED	EACH	1
INDUCTIVE LOOP DETECTOR	EACH	6
DETECTOR LOOP, TYPE 1	FOOT	539.0
LIGHT DETECTOR	EACH	3
LIGHT DETECTOR AMPLIFIER	EACH	1
EMERGENCY VEHICLE PRIORITY SYSTEM LINE SENSOR CABLE, NO. 20 3/C	FOOT	426.5
RETROREFLECTIVE TRAFFIC SIGNAL BACKPLATE	EACH	6
FULL-ACTUATED CONTROLLER AND TYPE IV CABINET, SPECIAL	EACH	1
UNINTERRUPTIBLE POWER SUPPLY, SPECIAL	EACH	1
ELECTRIC CABLE IN CONDUIT, GROUNDING, NO. 6, 1C	FOOT	1,129.5

NOTE
100% OF EMERGENCY VEHICLE PREEMPTION EQUIPMENT COST WILL BE PAID BY THE NORTH AURORA FIRE PROTECTION DISTRICT.

I.D.O.T TRAFFIC SIGNAL INSTALLATION ELECTRICAL SERVICE REQUIREMENTS					TOTAL WATTAGE
TYPE	NO. LAMPS	WATTAGE		% OPERATION	
		INCAND.	LED		
SIGNAL (RED)	14		17	0.50	119.0
(YELLOW)	14		25	0.25	87.5
(GREEN)	14		15	0.25	52.5
ARROW (YELLOW)	6		12	0.10	7.2
ARROW (GREEN)	6		12	0.10	7.2
PEDESTRIAN SIGNAL	0		25	1.00	0.0
CONTROLLER	1		100	1.00	100.0
UPS	1		25	1.00	25.0
TOTAL =					398.4

ENERGY COSTS TO: ILLINOIS DEPARTMENT OF TRANSPORTATION
201 W. CENTER COURT
SCHAUMBURG, IL 60196

ENERGY SUPPLY CONTACT: KATHY NYSTROM
PHONE: (847) 608-2331
COMPANY: COMMONWEALTH EDISON

NOTE:
THE END OF THE TRACER CABLE SHALL BE CONTINUOUS AND EXTEND INTO THE CONTROLLER CABINET.

NOTE:
THE TRAFFIC SIGNAL CONTROL EQUIPMENT FOR THIS PROJECT SHALL BE "EAGLE" TO MATCH THE EXISTING ADJACENT SYSTEM.

NOTE:
THE EMERGENCY VEHICLE PREEMPTION EQUIPMENT FOR THIS PROJECT SHALL BE TOMAR OR AN APPROVED EQUAL.

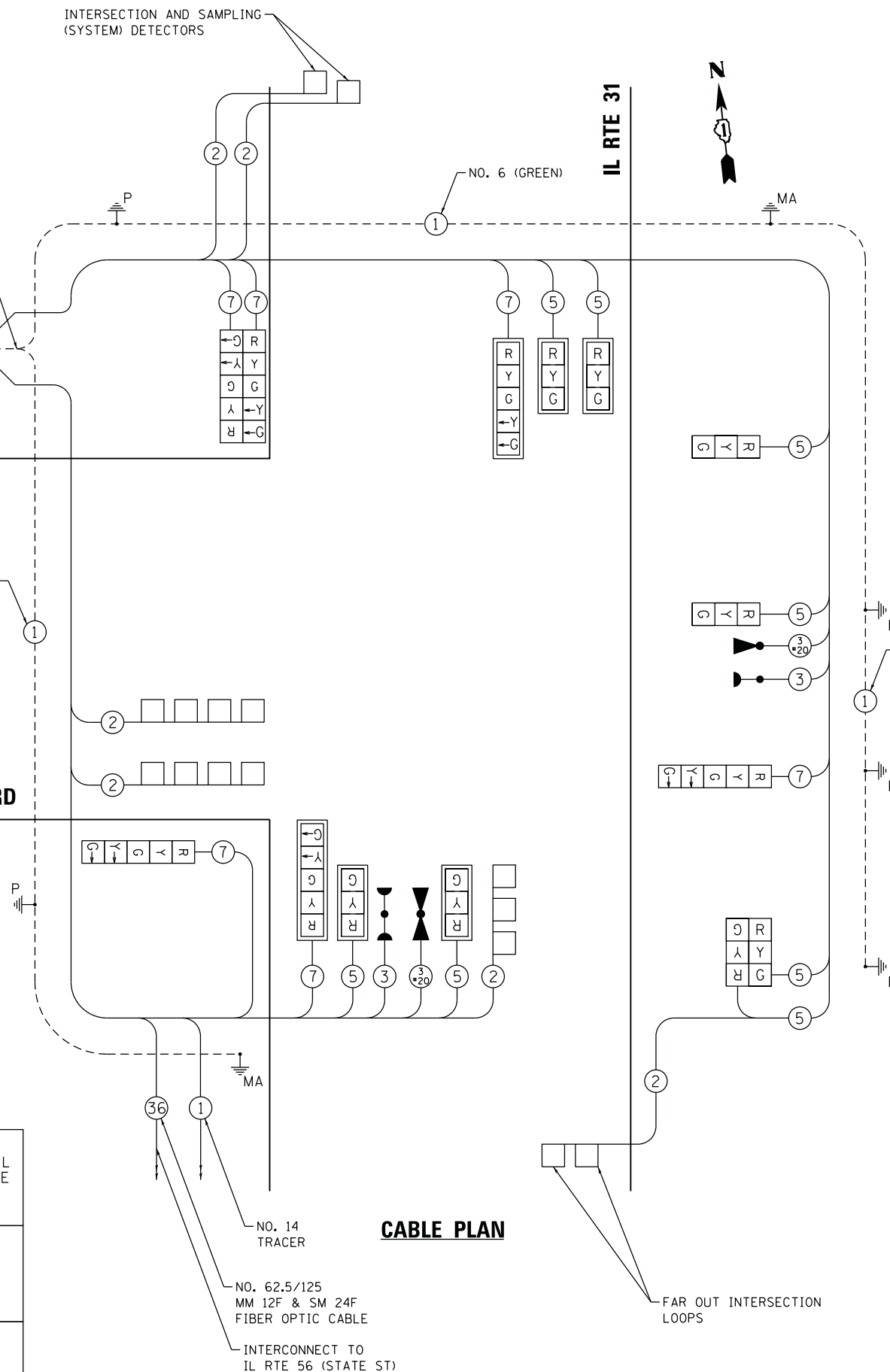
INTERSECTION AND SAMPLING (SYSTEM) DETECTORS

NUMBER OF GROUND CABLES AS PER PLAN
NO. 6
1/C NO. 6 (GREEN)

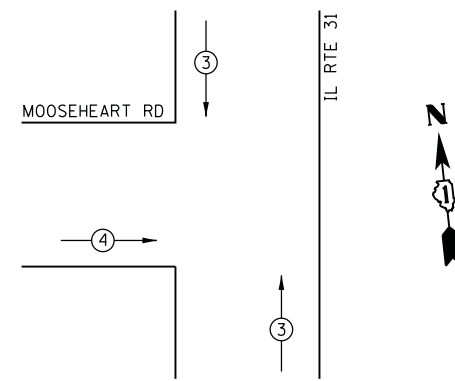
MOOSEHEART RD

NO. 6 (GREEN)

CABLE PLAN

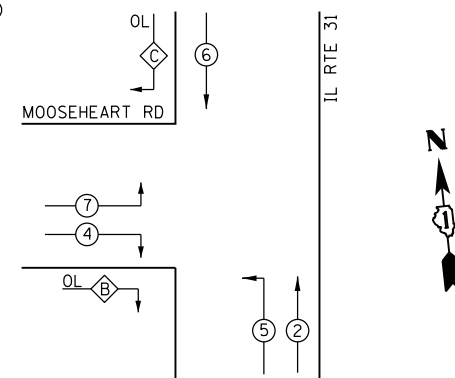


EMERGENCY VEHICLE PREEMPTION SEQUENCE



PROPOSED EMERGENCY VEHICLE PREEMPTORS		
PROPOSED EMERGENCY VEHICLE PREEMPTORS	3	4
MOVEMENT	↓	→

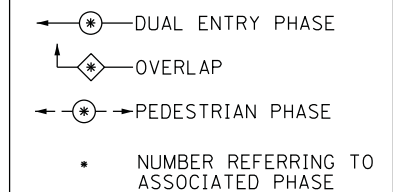
CONTROLLER SEQUENCE



PHASE DESIGNATION DIAGRAM

OVERLAP PHASE	PERMISSIVE PHASE	PROTECTED PHASE
B =	4 +	5
C =	6 +	7

CONTROLLER SEQUENCE LEGEND



COMPANY NAME: HRGreen
PROJECT CONTACT: HRGreen.com
DATE PLOTTED: 7/25/2012 10:51:35 AM
FILE NAME: 86100196_14-sigcab.dgn
PLOT DRIVER: pafcah
PEN TABLE: standard-trans.tbl



USER NAME = charke	DESIGNED - JJS	REVISED - C. HARTKE 8/3/2012
PLOT SCALE = NTS	DRAWN - JJS	REVISED -
PLOT DATE = 7/25/2012	CHECKED - DJ	REVISED -
	DATE - 7/25/2012	REVISED -

STATE OF ILLINOIS
DEPARTMENT OF TRANSPORTATION

**CABLE PLAN AND PHASE DESIGNATION DIAGRAM
ILLINOIS ROUTE 31 AT MOOSEHEART ROAD**

SCALE: NTS SHEET NO. 1 OF 1 SHEETS STA. TO STA.

F.A. RTE.	SECTION	COUNTY	TOTAL SHEETS	SHEET NO.
3887	AR-N-2	KANE	85	59
FED. ROAD DIST. NO. ILLINOIS FED. AID PROJECT			CONTRACT NO. 60P65	