

F.A. RTE.	SECTION	COUNTY	TOTAL SHEETS	SHEET NO.
VAR	2012-020 I	VARIOUS	14	1
		ILLINOIS	CONTRACT NO. 60T72	

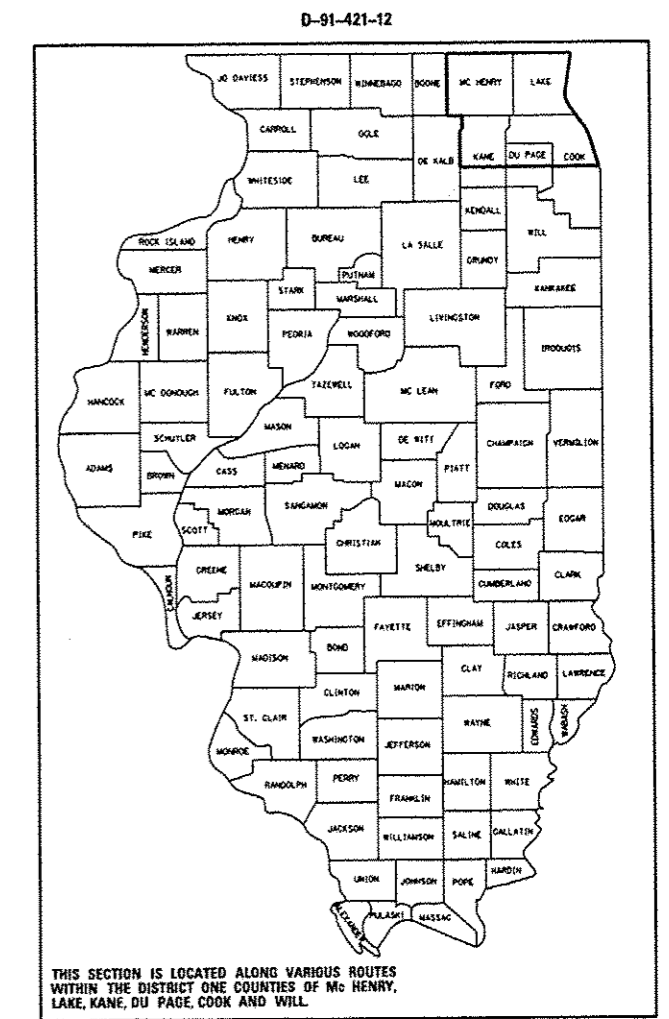
11-9-12 LETTING ITEM 062

STATE OF ILLINOIS
DEPARTMENT OF TRANSPORTATION
DIVISION OF HIGHWAYS

**PROPOSED
HIGHWAY PLANS**

FOR INDEX OF SHEETS, SEE SHEET NO. 2

**ROUTE: VARIOUS EXPRESSWAYS AND ARTERIAL
HIGHWAYS – NORTHERN PART, DISTRICT ONE**
SECTION: 2012-020 I
FENCE REPAIR
COUNTY: VARIOUS
C-91-421-12



THIS SECTION IS LOCATED ALONG VARIOUS ROUTES WITHIN THE DISTRICT ONE COUNTIES OF MC HENRY, LAKE, KANE, DU PAGE, COOK AND WILL.

**SEE LOCATION MAPS
SHEETS 4 THRU 8**

C.U.A.N.
CHICAGO UTILITY ALERT NETWORK
1-312-744-7000

J.U.L.I.E.
JOINT UTILITY LOCATION INFORMATION FOR EXCAVATION
1-800-892-0123
OR 811

PROJECT ENGINEER: ROBERT BORO (847) 705-4237
PROJECT MANAGER: ISSAM RAYYAN

CONTRACT NO. 60T72

STATE OF ILLINOIS
DEPARTMENT OF TRANSPORTATION
DIVISION OF HIGHWAYS
SUBMITTED August 23, 2012
John Fatmann
DEPUTY DIRECTOR OF HIGHWAYS, REGION ENGINEER
October 5, 2012
John D. Baranzello, P.E.
actg ENGINEER OF DESIGN AND ENVIRONMENT
October 5, 2012
William R. Frey, Jr.
actg DIRECTOR OF HIGHWAYS, CHIEF ENGINEER

**PRINTED BY THE AUTHORITY
OF THE STATE OF ILLINOIS**

INDEX OF SHEETS

1. TITLE SHEET
2. INDEX OF SHEETS
LIST OF APPLICABLE STATE STANDARDS
3. SUMMARY OF QUANTITIES
4. COOK COUNTY (NORTH OF ILL 38) LOCATION MAP
5. DUPAGE COUNTY (NORTH OF ILL 38) LOCATION MAP
6. KANE COUNTY (NORTH OF ILL 38) LOCATION MAP
7. LAKE COUNTY LOCATION MAP
8. MC HENRY COUNTY LOCATION MAP
9. DETAILS OF PEDESTRIAN BARRIER TYPE III (STD. 10-SS-514R)
10. CHAIN LINK FENCE (STD. 10-SS-506B)
11. CHAIN LINK FENCE POST SLEEVE REPAIR DETAIL
12. PROPOSED PEDESTRIAN BARRIER AND CHAIN LINK FENCE
WITH TENSION WIRE AND FENCE RAIL REMOVAL
13. SPECIAL FENCE DETAILS
14. TRAFFIC CONTROL DETAILS FOR SHOULDER CLOSURE AND
PARTIAL RAMP CLOSURES

STATE STANDARDS

- 664001-02
- 665001-02
- 701001-02
- 701006-03
- 701101-02
- 701106-02
- 701201-04
- 701301-04
- 701421-04
- 701422-04
- 701501-06
- 701606-08
- 701701-08
- 701801-05
- 701901-02

DESCRIPTION

- CHAIN LINK FENCE
- WOVEN WIRE FENCE
- OFF-RD OPERATIONS, 2L, 2W, MORE THAN 15' AWAY
- OFF-RD OPERATIONS, 2L, 2W, 15' TO 24" FROM PAVEMENT EDGE
- OFF-RD OPERATIONS, MULTILANE, 15' TO 24" FROM PAVEMENT EDGE
- OFF-RD OPERATIONS, MULTILANE, MORE THAN 15' AWAY
- LANE CLOSURE, 2L, 2W, DAY ONLY, FOR SPEEDS > 45 MPH
- LANE CLOSURE, 2L, 2W, SHORT TIME OPERATIONS
- LANE CLOSURE, MULTILANE, DAY OPERATIONS ONLY, FOR SPEEDS > 45 MPH TO 55 MPH
- LANE CLOSURE, MULTILANE, FOR SPEEDS > 45 MPH TO 55 MPH
- URBAN LANE CLOSURE, 2L, 2W, UNDIVIDED
- URBAN LANE CLOSURE, MULTILANE, 2W WITH MOUNTABLE MEDIAN
- URBAN LANE CLOSURE, MULTILANE INTERSECTION
- SIDEWALK, CORNER OR CROSSWALK CLOSURE
- TRAFFIC CONTROL DEVICES

FILE NAME =	USER NAME = edwardj	DESIGNED -	REVISED -	STATE OF ILLINOIS DEPARTMENT OF TRANSPORTATION	INDEX OF SHEETS AND STATE STANDARDS	F.A. RTE.	SECTION	COUNTY	TOTAL SHEETS	SHEET NO.	
ct:\pwork\pudat\edwardj\08306593\014	112-ehf-plm.dgn	DRAWN -	REVISED -			VAR	2012-020 I	VARIOUS	14	2	
Default	PLOT SCALE = 1/8"=1'-0"	CHECKED -	REVISED -			CONTRACT NO. 60T72					
	PLOT DATE = 8/27/2012	DATE -	REVISED -			SCALE:	SHEET	OF	SHEETS	STA.	TO STA.

CONT. MAIN

CONT. MAIN

SUMMARY OF QUANTITIES			LIRBAN			CONSTRUCTION TYPE CODE: 0021			
CODE NO	ITEM	UNIT	TOTAL QUANTITIES	100% STATE 0021	100% MCHD 0021				
66400505	CHAIN LINK FENCE, 8'	FOOT	153	121	32				
66500105	WOVEN WIRE FENCE, 4'	FOOT	14	11	3				
X6640100	FENCE RAIL REMOVAL	FOOT	1420	1136	284				
X6640300	CHAIN LINK FENCE REMOVAL	FOOT	36	29	7				
Z0009600	CHAIN LINK FABRIC, SPECIAL, 5'-0"	FOOT	18	14	4				
Z0009700	CHAIN LINK FABRIC, SPECIAL, 6'-0"	FOOT	1775	1420	355				
Z0009800	CHAIN LINK FABRIC, SPECIAL, 7'-0"	FOOT	8	6	2				
Z0009810	CHAIN LINK FABRIC, SPECIAL, 8'-0"	FOOT	54	43	11				
Z0009900	CHAIN LINK FABRIC, TYPE 1, 4'-0"	FOOT	14910	11928	2982				
Z0010300	CHAIN LINK FABRIC, TYPE 3, SPECIAL	FOOT	355	284	71				
Z0020210	PULL POST ARRANGEMENT	EACH	2	1	1				
Z0033200	LINE POST, TYPE 1	EACH	639	511	128				
Z0033305	LINE POST, TYPE 3 SPECIAL	EACH	18	14	4				
Z0042500	POST, SPECIAL	EACH	100	80	20				
Z0042505	POST REMOVAL AND REPLACEMENT	EACH	4	3	1				
Z0074000	TERMINAL POST, TYPE 1	EACH	36	29	7				

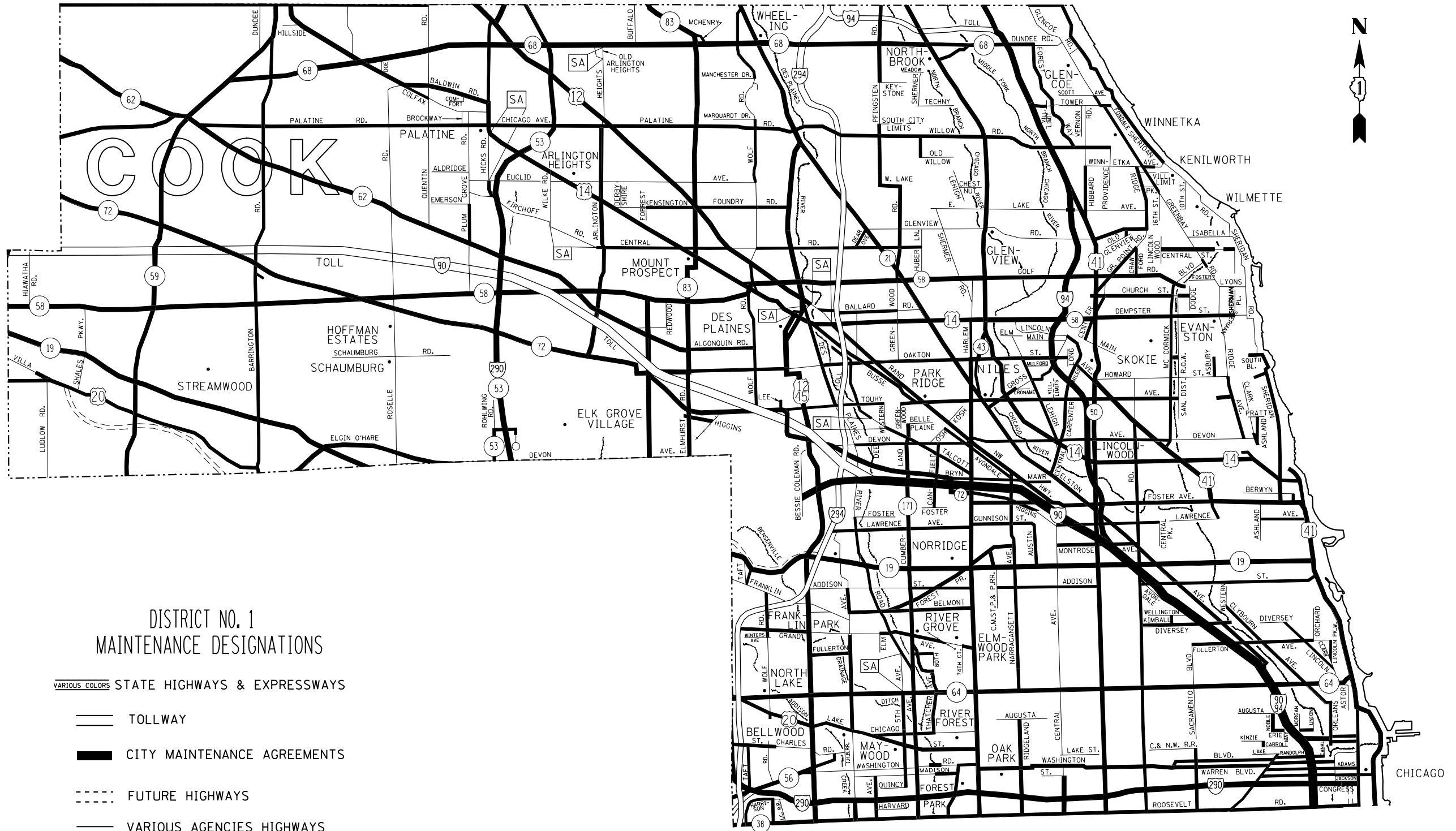
SUMMARY OF QUANTITIES			LIRBAN			CONSTRUCTION TYPE CODE: 0021			
CODE NO	ITEM	UNIT	TOTAL QUANTITIES	100% STATE 0021	100% MCHD 0021				
Z0074010	TERMINAL POST, TYPE 3 SPECIAL	EACH	4	3	1				
X6640590	CHAIN LINK FENCE POST SLEEVE REPAIR	EACH	36	29	7				
X6640309	CHAIN LINK GATES (SPECIAL)	SO FT	621	497	124				

FILE NAME *	USER NAME * edwardj	DESIGNED -	REVISED -
clpr_wor\edwardj\edwardj\0306593\042102.dwg		DRAWN -	REVISED -
		CHECKED -	REVISED -
		DATE -	REVISED -

**STATE OF ILLINOIS
DEPARTMENT OF TRANSPORTATION**

SUMMARY OF QUANTITIES				
SCALE:	SHEET NO.	OF	SHEETS	STA. TO STA.

F.A. RTE.	SECTION	COUNTY	TOTAL SHEETS	SHEET NO.
VAR	2012-020 I	VARIOUS	14	3
CONTRACT NO. 60T72				
FED. ROAD DIST. NO. 1 ILLINOIS FED. AID PROJECT				



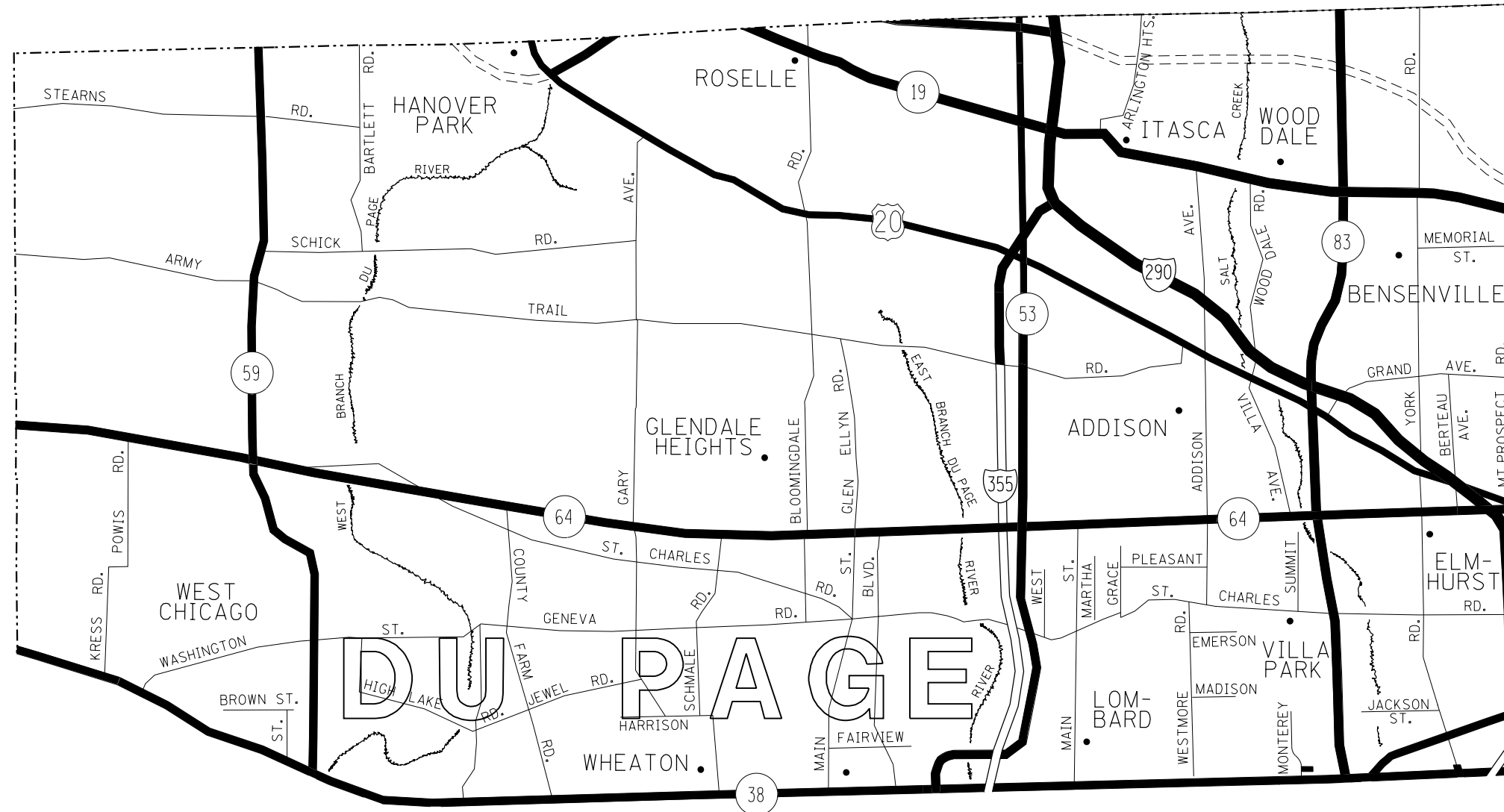
FILE NAME =	USER NAME = edouardj	DESIGNED -	REVISED -
es:\pw\work\pilot\edouardj\0306593\014\112-sht-plan.dgn		DRAWN -	REVISED -
Default	PLOT SCALE = 100.0134' / in.	CHECKED -	REVISED -
	PLOT DATE = 6/22/2012	DATE -	REVISED -

**STATE OF ILLINOIS
DEPARTMENT OF TRANSPORTATION**

**FENCE REPAIR LOCATION MAP - COOK COUNTY
SOUTH OF IL RTE 38**

SCALE: SHEET OF SHEETS STA. TO STA.

F.A. RTE.	SECTION	COUNTY	TOTAL SHEETS	SHEET NO.
VAR	2012-020 I	VARIOUS	14	4
			CONTRACT NO. 60T72	
ILLINOIS FED. AID PROJECT				



DISTRICT NO. 1
MAINTENANCE DESIGNATIONS

- VARIOUS COLORS STATE HIGHWAYS & EXPRESSWAYS
- TOLLWAY
- CITY MAINTENANCE AGREEMENTS
- FUTURE HIGHWAYS
- VARIOUS AGENCIES HIGHWAYS

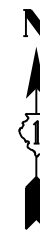
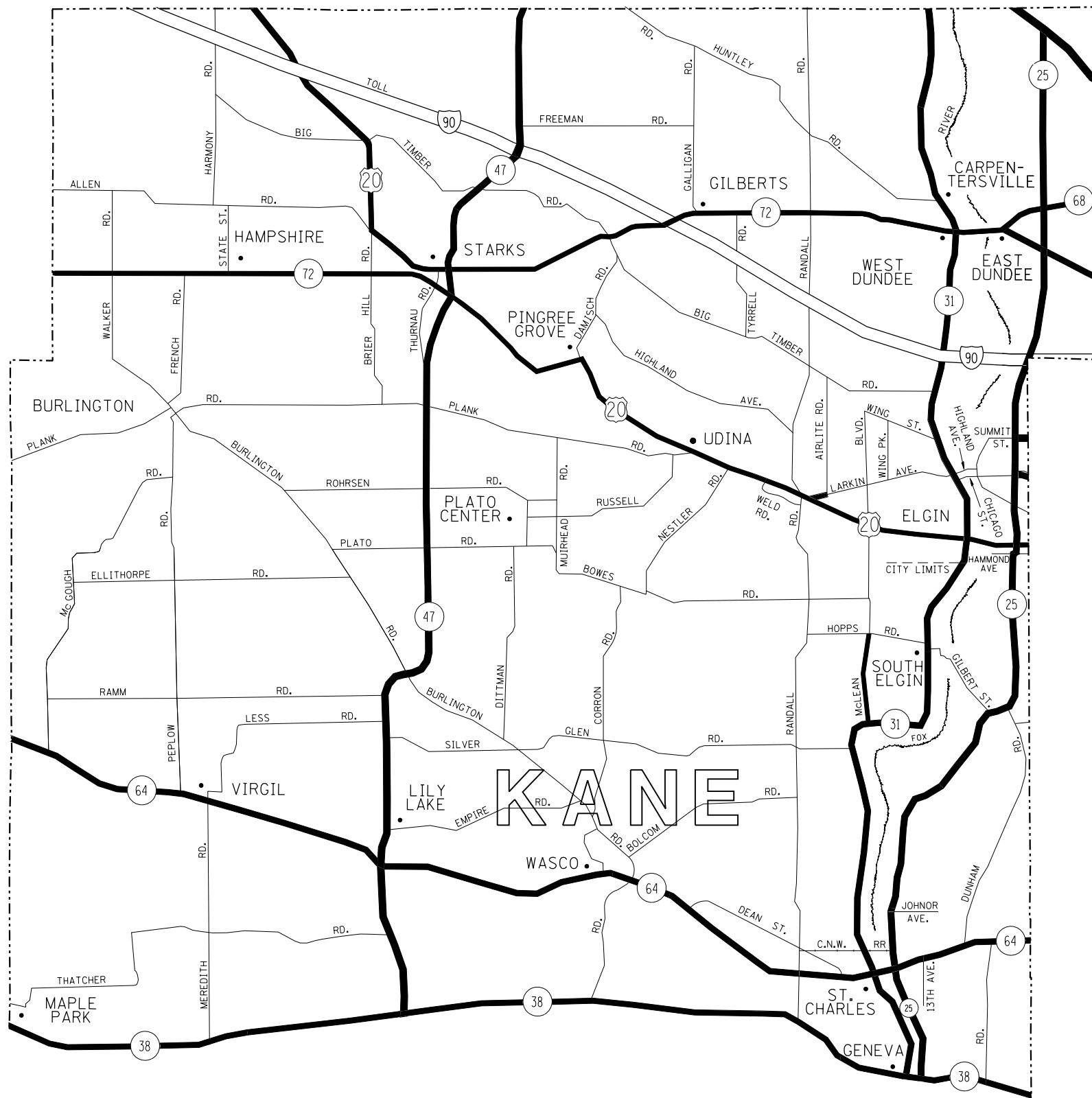
FILE NAME =	USER NAME = edouardj	DESIGNED -	REVISED -
ci:\pw\work\p1\dot\edouardj\0306593\0142112-sht-pln.dgn		DRAWN -	REVISED -
Default		CHECKED -	REVISED -
	PLOT DATE = 6/22/2012	DATE -	REVISED -

STATE OF ILLINOIS
DEPARTMENT OF TRANSPORTATION

FENCE REPAIR LOCATION MAP - DuPAGE COUNTY
SOUTH OF IL RTE 38

SCALE: SHEET OF SHEETS STA. TO STA.

F.A. RTE.	SECTION	COUNTY	TOTAL SHEETS	SHEET NO.
VAR	2012-020 I	VARIOUS	14	5
CONTRACT NO. 60T72			ILLINOIS FED. AID PROJECT	



DISTRICT NO. 1
MAINTENANCE DESIGNATIONS

- VARIOUS COLORS STATE HIGHWAYS & EXPRESSWAYS
- TOLLWAY
- CITY MAINTENANCE AGREEMENTS
- FUTURE HIGHWAYS
- VARIOUS AGENCIES HIGHWAYS

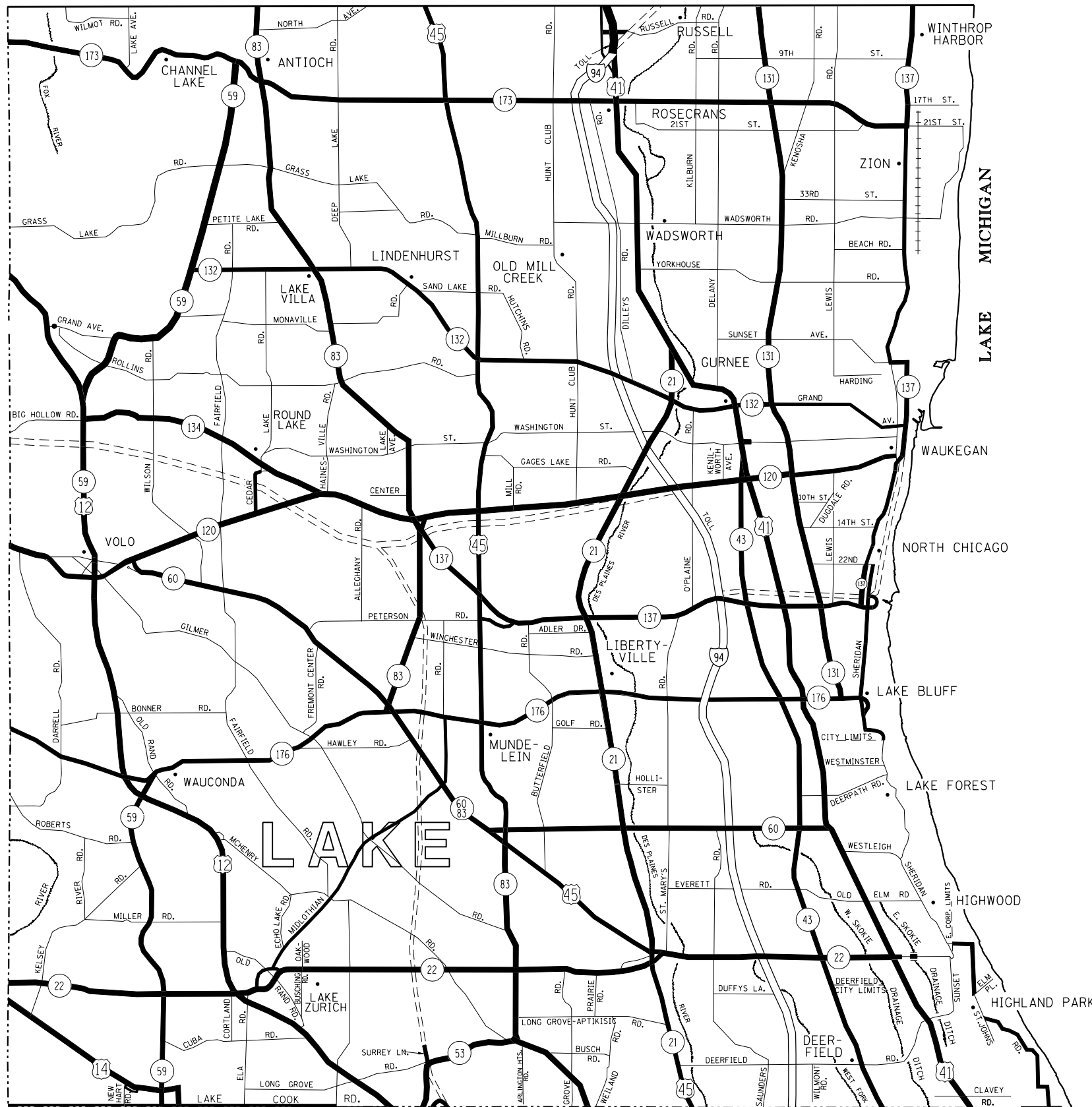
FILE NAME =	USER NAME = edouardj	DESIGNED -	REVISED -
ct:\pw\work\p1dot\edouardj\0306593\0142112-sht-pln.dgn		DRAWN -	REVISED -
Default	PLOT SCALE = 100.0012' / in.	CHECKED -	REVISED -
	PLOT DATE = 6/22/2012	DATE -	REVISED -

STATE OF ILLINOIS
DEPARTMENT OF TRANSPORTATION

FENCE REPAIR LOCATION MAP - KANE COUNTY
SOUTH OF IL RTE 38

SCALE: SHEET OF SHEETS STA. TO STA.

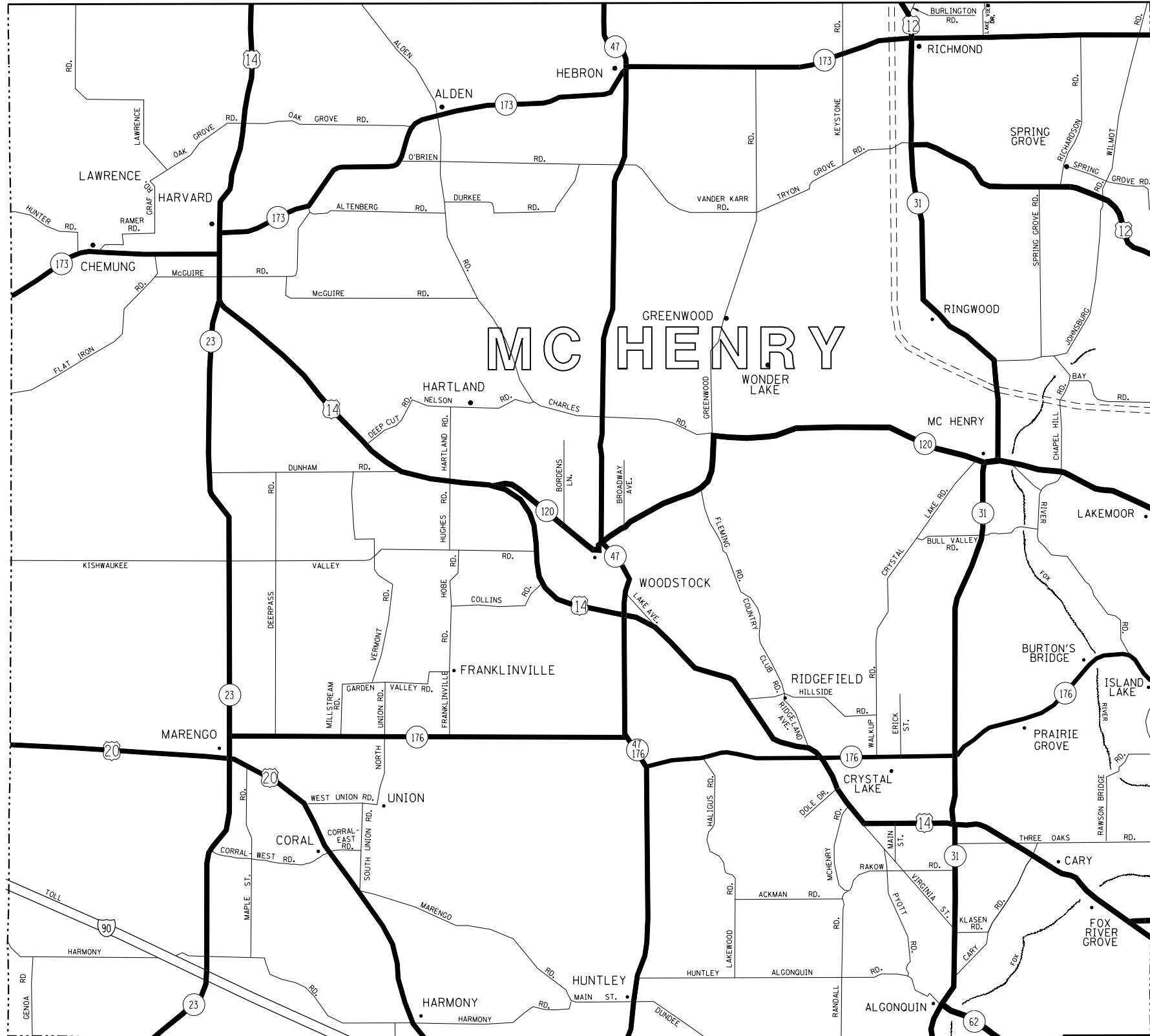
F.A. RTE.	SECTION	COUNTY	TOTAL SHEETS	SHEET NO.
VAR	2012-020 I	VARIOUS	14	6
			CONTRACT NO. 60T72	
ILLINOIS FED. AID PROJECT				



DISTRICT NO. 1 MAINTENANCE DESIGNATIONS

- VARIOUS COLORS STATE HIGHWAYS & EXPRESSWAYS
- TOLLWAY
- CITY MAINTENANCE AGREEMENTS
- FUTURE HIGHWAYS
- VARIOUS AGENCIES HIGHWAYS

FILE NAME =	USER NAME = edouardj	DESIGNED -	REVISED -	STATE OF ILLINOIS DEPARTMENT OF TRANSPORTATION	FENCE REPAIR LOCATION MAP - WILL COUNTY	F.A. RTE.	SECTION	COUNTY	TOTAL SHEETS	SHEET NO.	
		DRAWN -	REVISED -			VAR	2012-020 I	VARIOUS	14	7	
		CHECKED -	REVISED -			CONTRACT NO. 60T72					
Default	PLOT DATE = 6/22/2012	DATE -	REVISED -			SCALE:	SHEET	OF	SHEETS	STA.	TO
ILLINOIS FED. AID PROJECT											



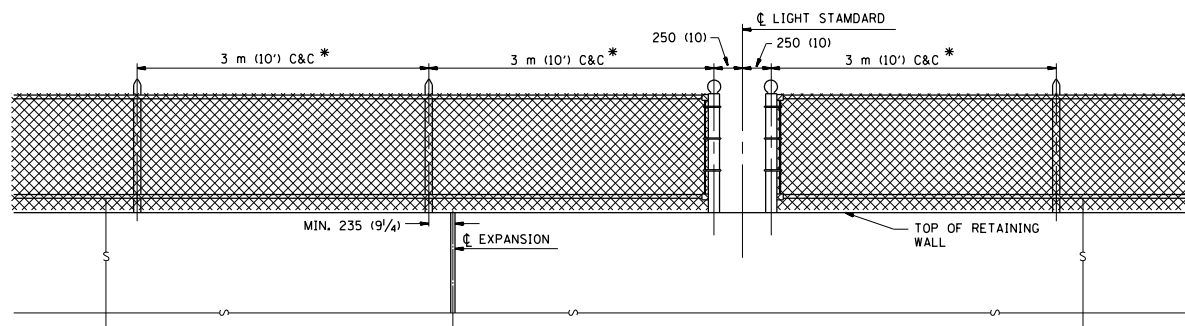
DISTRICT NO. 1 MAINTENANCE DESIGNATIONS

- VARIOUS COLORS STATE HIGHWAYS & EXPRESSWAYS
- == TOLLWAY
- == CITY MAINTENANCE AGREEMENTS
- - - - FUTURE HIGHWAYS
- VARIOUS AGENCIES HIGHWAYS

FILE NAME =	USER NAME = edouardj	DESIGNED -	REVISED -	STATE OF ILLINOIS DEPARTMENT OF TRANSPORTATION	F.A. RTE.	SECTION	COUNTY	TOTAL SHEETS	SHEET NO.
Default	et:\pw\work\p1dot\edouardj\0306593\014\112-sht-pln.dgn	DRAWN -	REVISED -		VAR	2012-020 I	VARIOUS	14	8
	PLOT SCALE = 100.0003' / in.	CHECKED -	REVISED -		CONTRACT NO. 60T72				
	PLOT DATE = 6/22/2012	DATE -	REVISED -		SCALE:	SHEET	OF	SHEETS	STA.
ILLINOIS FED. AID PROJECT									

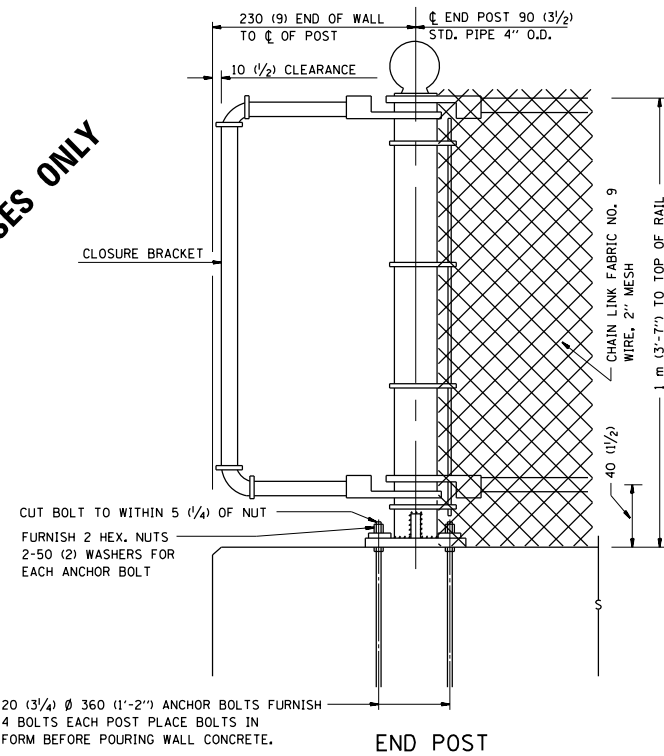
NOTE

* MAXIMUM POST SPACING SHALL BE 3 m (10') C&C EXCEPT WHERE OTHERWISE SHOWN ON PLANS



ELEVATION VIEW OF RETAINING WALL WITH PEDESTRIAN BARRIER TYPE III

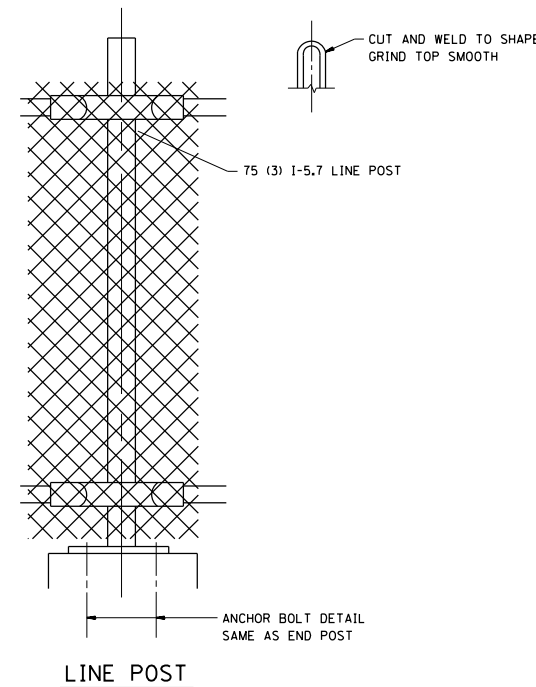
FOR INFORMATIONAL PURPOSES ONLY



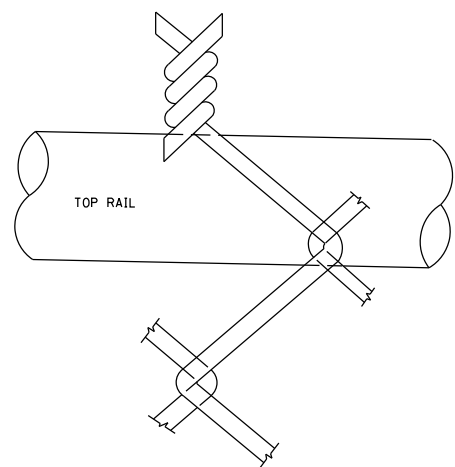
20 (3/4) Ø 360 (1'-2") ANCHOR BOLTS FURNISH 4 BOLTS EACH POST PLACE BOLTS IN FORM BEFORE POURING WALL CONCRETE.

END POST

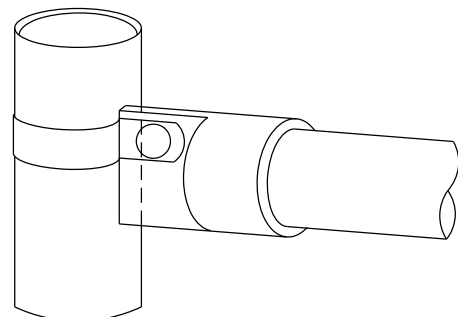
NOTE:
THE COST OF FURNISHING ANCHOR BOLTS, NUTS, & WASHERS TO BE INCIDENTAL



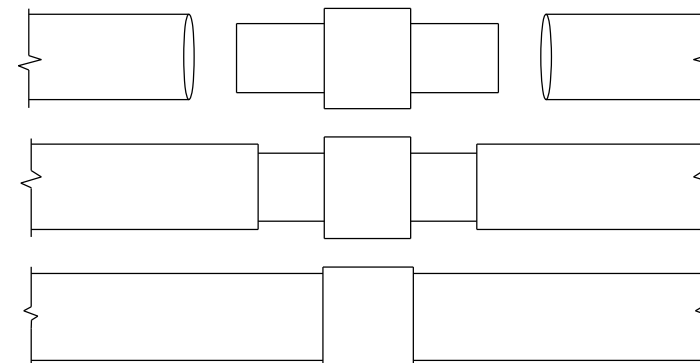
LINE POST



WIRE MESH FABRIC TO BE BARBED AT THE TOP

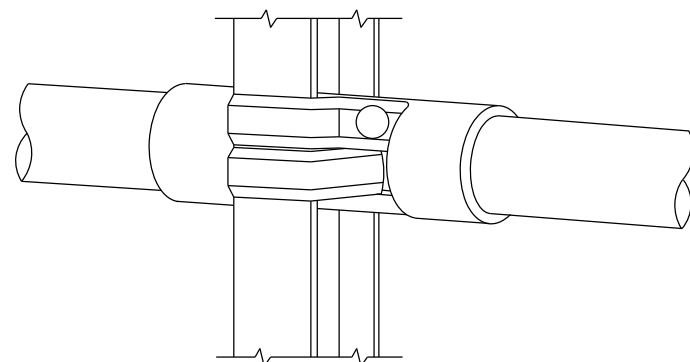


RAIL FITTING AT END POSTS

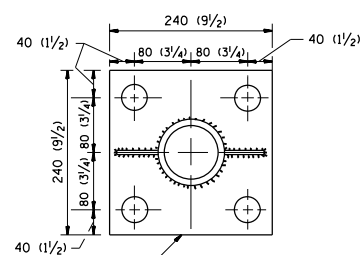


EXPANSION COUPLING DETAIL

NOTE:
EXP. COUPLING TO APPEAR IN TOP AND BOTTOM RAILS WHERE EVER EXP. JT. APPEARS IN STRUCTURE.



RAIL FITTING ON SECTION LINE POST



240 (9 1/2) X 80 (3 1/4) X 240 (9 1/2) BASE PLATE
4-30 (1 1/4) Ø HOLES FOR END CL LINE POSTS

ANCHOR PLATE DETAILS

NOTE:
POST, PLATE AND GUSSET ASSEMBLY SHALL BE GALVANIZED AFTER ALL CUTTING, DRILLING, WELDING, AND FABRICATION HAVE BEEN COMPLETED. THE GALVANIZED COATING SHALL CONFORM TO THE REQUIREMENTS OF AASHTO M 120. THE GALVANIZED COATING SHALL NOT BE LESS THAN 610 G/50 M (2.0 OZ./SQ. FT.) OF SURFACE.

ALL DIMENSIONS ARE IN MILLIMETERS (INCHES) UNLESS OTHERWISE SHOWN.

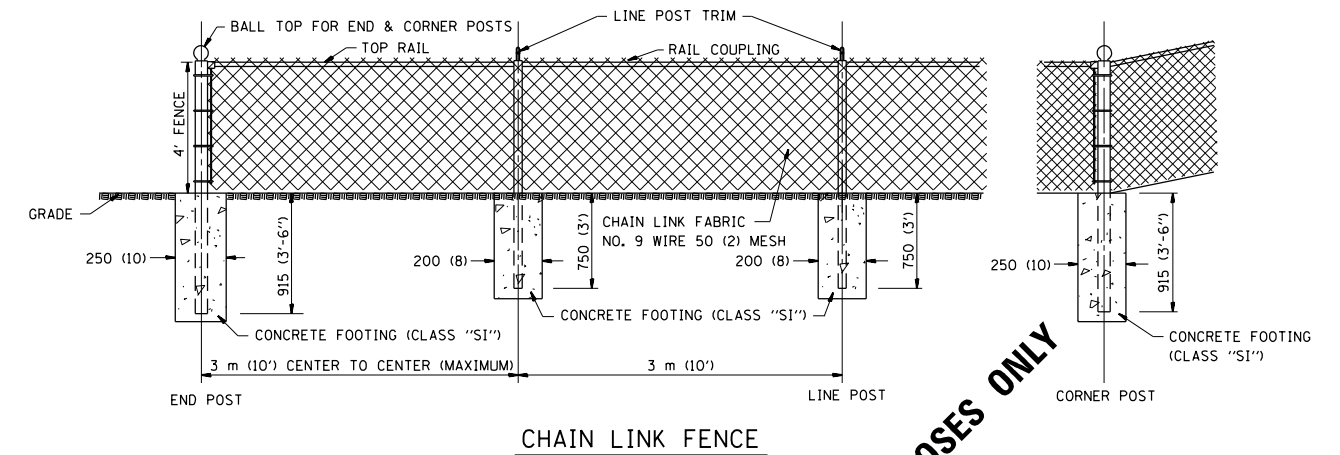
FILE NAME =	USER NAME = edouardj	DESIGNED -	REVISED -
et:\pw\work\p1\dot\edouardj\0306593\0142112-sht-plen.dgn		DRAWN -	REVISED -
	PLOT SCALE = 100.0036' / m.	CHECKED -	REVISED -
	PLOT DATE = 6/22/2012	DATE -	REVISED -

**STATE OF ILLINOIS
DEPARTMENT OF TRANSPORTATION**

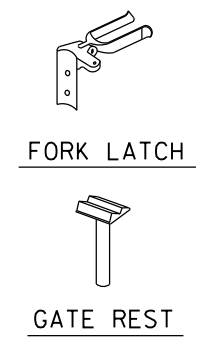
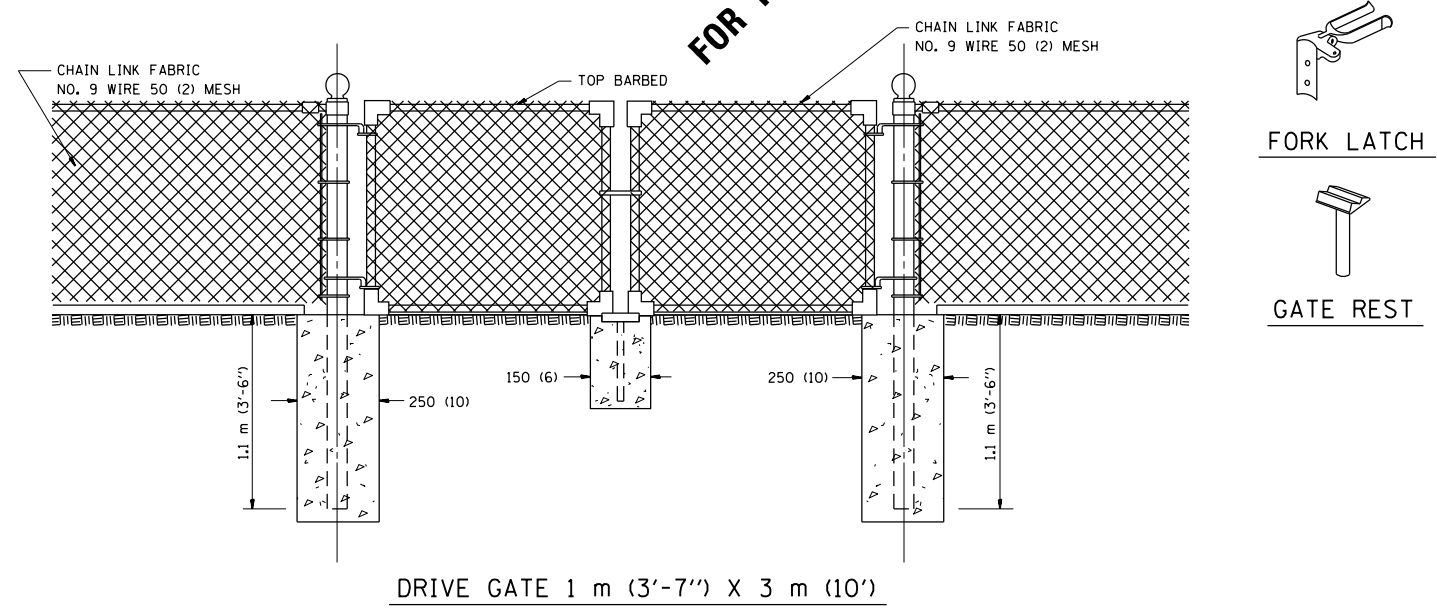
**PEDESTRIAN BARRIER TYPE III
STD. 10-SS-514 R**

SCALE: SHEET NO. OF SHEETS STA. TO STA.

F.A. RTÉ.	SECTION	COUNTY	TOTAL SHEETS	SHEET NO.
VAR	2012-020 I	VARIOUS	14	9
			CONTRACT NO. 60T72	
FED. ROAD DIST. NO. ILLINOIS FED. AID PROJECT				



FOR INFORMATIONAL PURPOSES ONLY



NOTE:
 THE CHAIN LINK FENCE AS SHOWN HEREIN SHALL BE CONSTRUCTED AT SUCH LOCATIONS AS SHOWN ON PLANS AND IN ACCORDANCE WITH THE SPECIAL PROVISIONS

THE ENGINEER SHALL ESTABLISH ALL NECESSARY LINE AND GRADE PRIOR TO THE ERECTION OF THE FENCE IN CONFORMANCE WITH THE PLANS

ALL DIMENSIONS ARE IN MILLIMETERS (INCHES) UNLESS OTHERWISE SHOWN.

FILE NAME =	USER NAME = edouardj	DESIGNED -	REVISED -
et:\pw\work\p1\dot\edouardj\0306593\0142112-sht-pln.dgn		DRAWN -	REVISED -
	PLOT SCALE = 100.0038' / in.	CHECKED -	REVISED -
	PLOT DATE = 6/22/2012	DATE -	REVISED -

STATE OF ILLINOIS
 DEPARTMENT OF TRANSPORTATION

CHAIN LINK FENCE
 STD. 10-SS-506 B

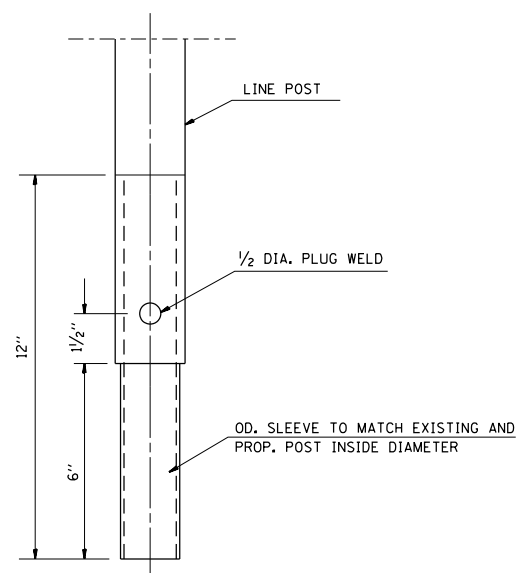
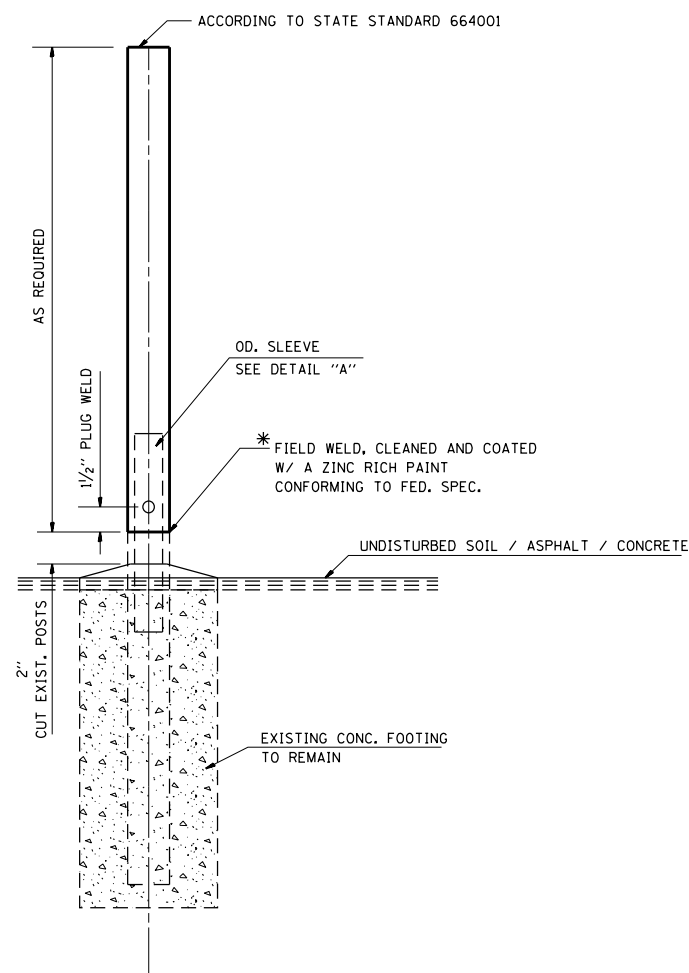
SCALE:	SHEET NO.	OF	SHEETS	STA.	TO	STA.
--------	-----------	----	--------	------	----	------

F.A. RTE.	SECTION	COUNTY	TOTAL SHEETS	SHEET NO.
VAR	2012-020 I	VARIOUS	14	10
FED. ROAD DIST. NO.			ILLINOIS FED. AID PROJECT	
CONTRACT NO. 60T72				

GENERAL NOTES:

THIS WORK CONSISTS OF FURNISHING ALL LABOR, MATERIALS, TOOLS AND EQUIPMENT TO REPAIR CHAIN LINK FENCE POST SLEEVE AS SHOWN ON THE PLANS OR AS DIRECTED BY THE ENGINEER, AND IN ACCORDANCE WITH STATE STANDARD 664001.

BASIS OF PAVEMENT: THIS WORK SHALL BE PAID FOR AT THE CONTRACT UNIT PRICE EACH FOR "CHAIN LINK FENCE POST SLEEVE REPAIR" WHICH PRICE SHALL BE PAYMENT IN FULL TO COMPLETE THE WORK AS SPECIFIED HEREIN.



SLEEVE DET. DWG

DETAIL "A"
SLEEVE DETAIL

* THIS WORK SHALL BE INCLUDED IN THE COST OF THE PAY ITEM "CHAIN LINK FENCE POST SLEEVE REPAIR"

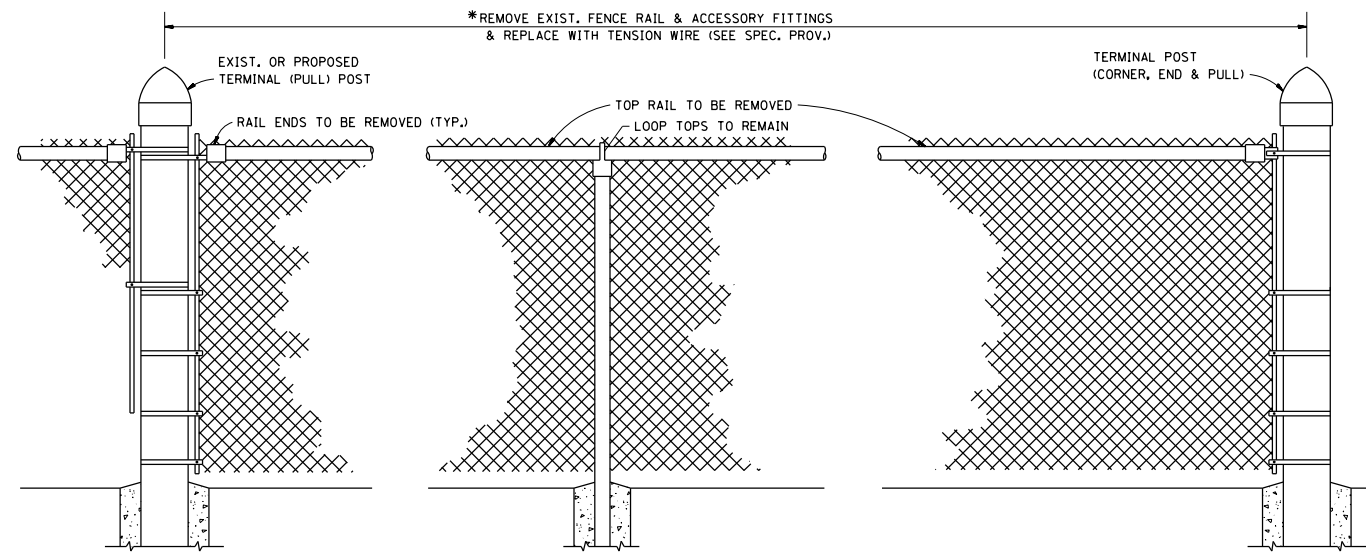
FILE NAME =	USER NAME = edouardj	DESIGNED -	REVISED -
ct:\pw\work\p1dot\edouardj\0306593\0142112-sht-pln.dgn		DRAWN -	REVISED -
	PLOT SCALE = 100.0001' / in.	CHECKED -	REVISED -
	PLOT DATE = 6/22/2012	DATE -	REVISED -

**STATE OF ILLINOIS
DEPARTMENT OF TRANSPORTATION**

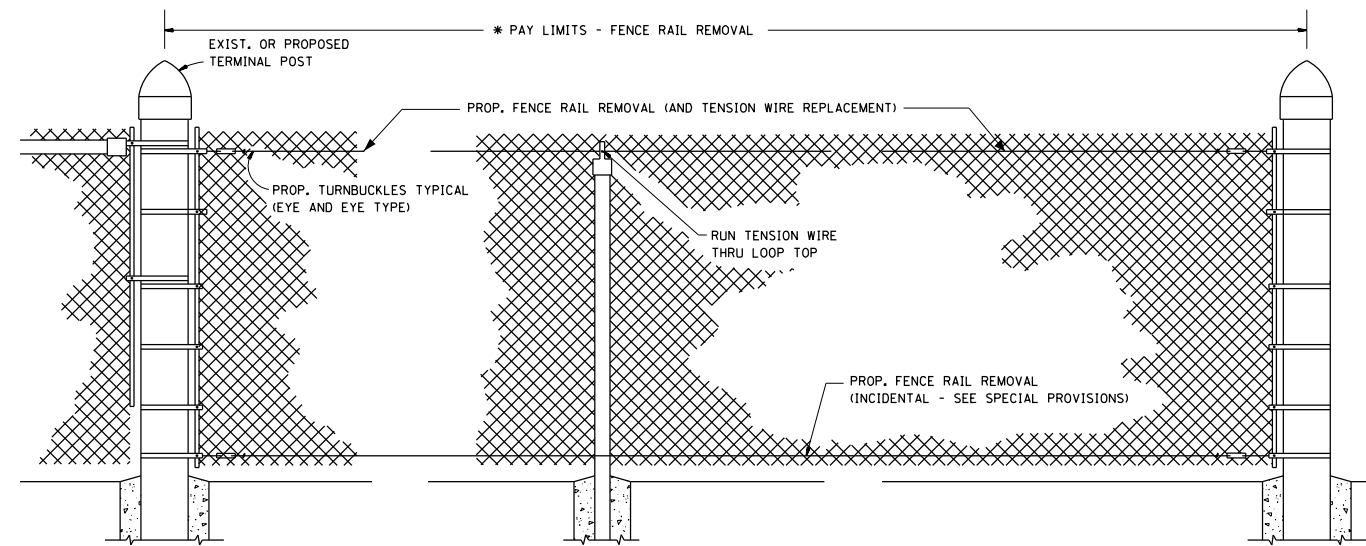
**CHAIN LINK FENCE POST SLEEVE
REPAIR DETAIL**

SCALE: SHEET NO. OF SHEETS STA. TO STA.

F.A. RTE.	SECTION	COUNTY	TOTAL SHEETS	SHEET NO.
VAR	2012-020 I	VARIOUS	14	11
FED. ROAD DIST. NO. ILLINOIS FED. AID PROJECT			CONTRACT NO. 60T72	



EXIST. CHAIN LINK FENCE WITH TOP RAIL



PROP. CHAIN LINK FENCE WITH "FENCE RAIL REMOVAL"

* THE ENGINEER IN CHARGE SHALL DETERMINE THE LENGTH OF FENCE RAIL TO BE REMOVED & REPLACED WITH "TENSION WIRE"

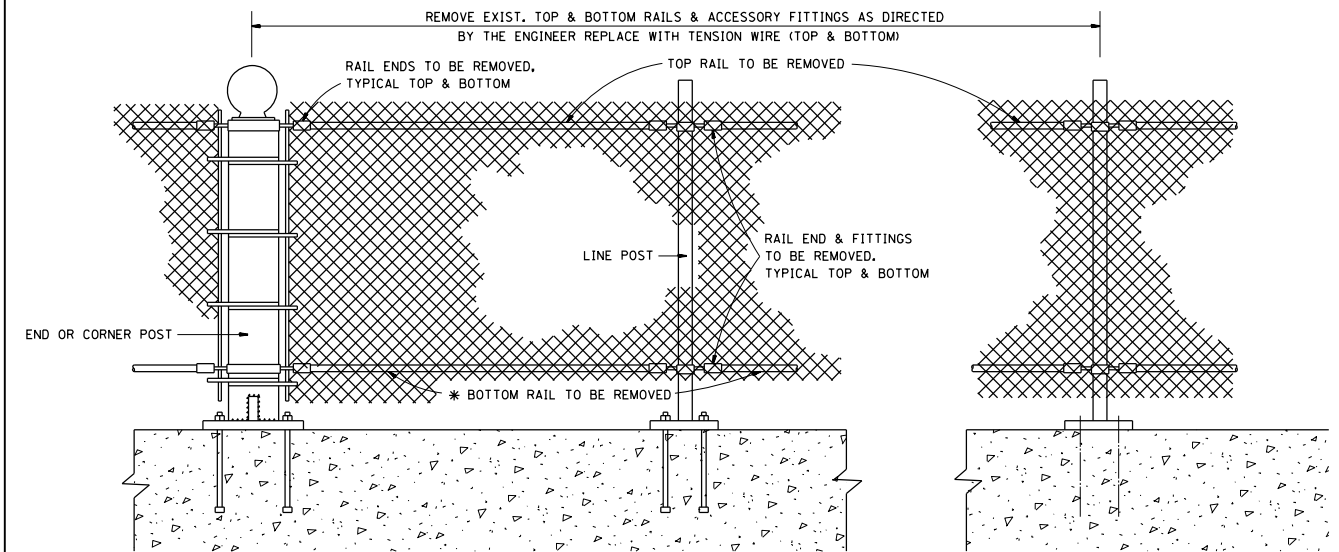
GENERAL NOTES

FENCE RAIL REMOVAL: THIS ITEM CONSISTS OF REMOVING EXISTING TOP OR BOTTOM RAIL, (DAMAGED OR UNDAMAGED) AND REPLACING WITH TENSION WIRE. BOTTOM TENSION WIRE SHALL BE CONSIDERED INCIDENTAL EXCEPT AT LOCATIONS OF EXISTING BOTTOM RAIL REMOVAL.

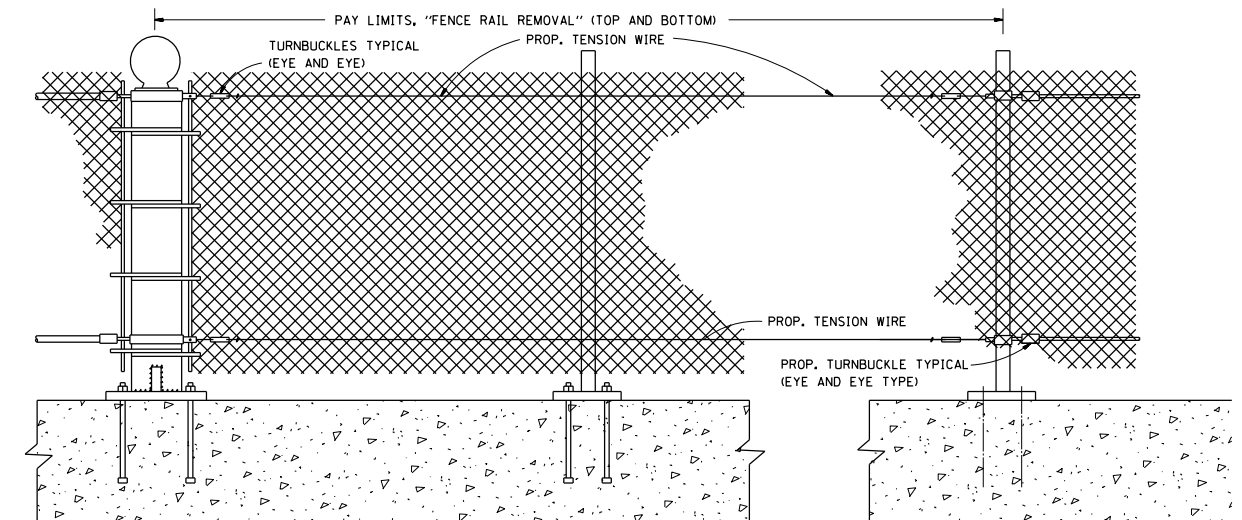
TENSION WIRE: THIS ITEM CONSISTS OF INSTALLING TENSION WIRE, TOP OR BOTTOM, WHERE TOP OR BOTTOM RAIL IS NON-EXISTENT, OR WHERE EXISTING DAMAGED TENSION WIRE IS REMOVED AND REPLACED BY NEW TENSION WIRE.

ALL WORK AND MATERIALS SHALL BE IN ACCORDANCE WITH THE PLANS, SPECIAL PROVISIONS, STANDARD SPECIFICATIONS AND STANDARD 664001.

REPLACEMENT OF OTHER FENCE COMPONENT PARTS SHALL BE MEASURED AND PAID FOR SEPARATELY AS DESCRIBED IN THE SPECIAL PROVISIONS.



EXIST. PEDESTRIAN BARRIER TYPE 3 WITH TOP AND BOTTOM RAILS



PROP. PEDESTRIAN BARRIER TYPE 3 WITH FENCE RAIL REMOVAL

ALL DIMENSIONS ARE IN MILLIMETERS (INCHES) UNLESS OTHERWISE SHOWN.

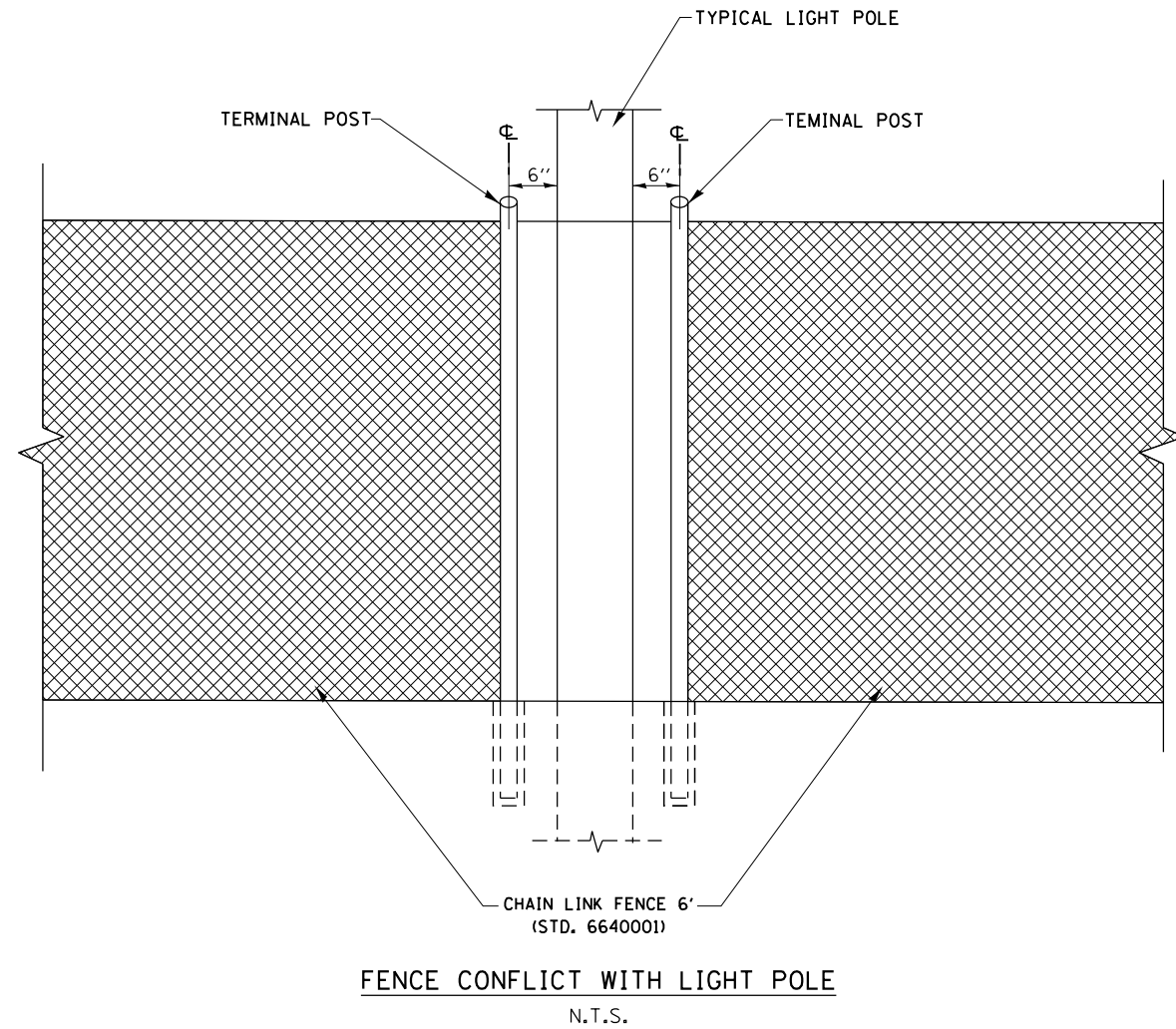
FILE NAME =	USER NAME = edouardj	DESIGNED -	REVISED -
es:\pw\work\p1\dot\edouardj\0306593\0142112-sht-plen.dgn		DRAWN -	REVISED -
		CHECKED -	REVISED -
		DATE -	REVISED -
PLOT SCALE = 100.0002' / 1in.			
PLOT DATE = 6/22/2012			

**STATE OF ILLINOIS
DEPARTMENT OF TRANSPORTATION**

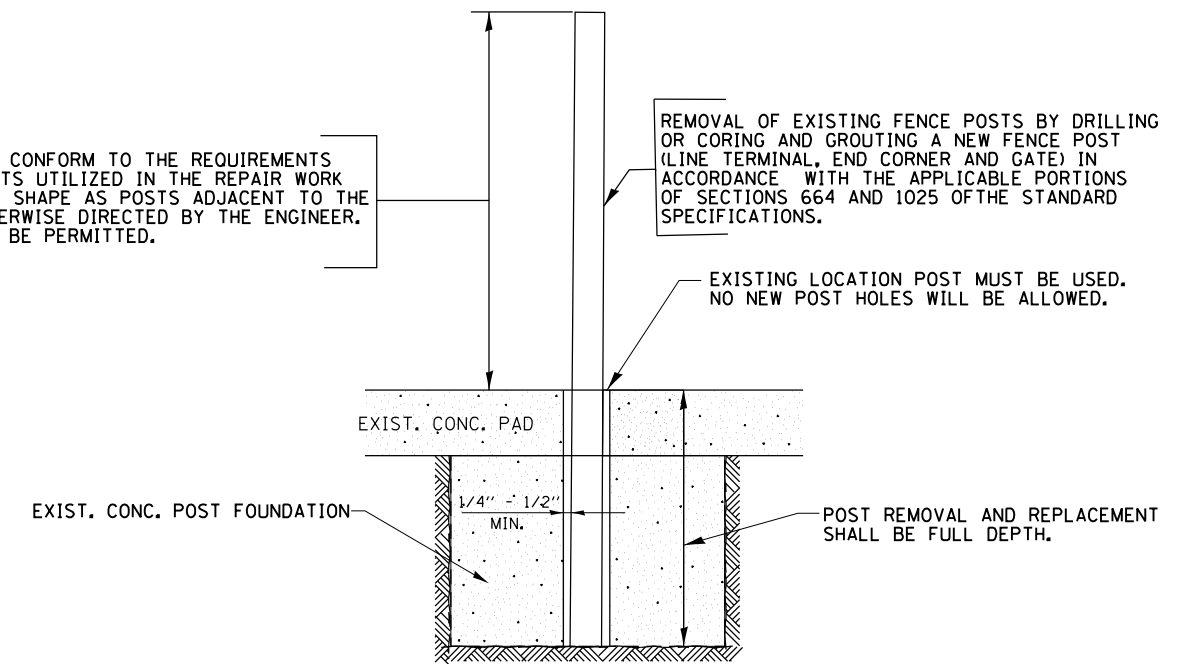
**PROPOSED PEDESTRIAN BARRIER AND
CHAIN LINK FENCE WITH TENSION WIRE AND FENCE RAIL REMOVAL**

SCALE: SHEET NO. OF SHEETS STA. TO STA.

F.A. RTE.	SECTION	COUNTY	TOTAL SHEETS	SHEET NO.
VAR	2012-020 I	VARIOUS	14	12
CONTRACT NO. 60T72				
FED. ROAD DIST. NO. ILLINOIS FED. AID PROJECT				



GALVANIZED POSTS SHALL CONFORM TO THE REQUIREMENTS OF STANDARD 864001 POSTS UTILIZED IN THE REPAIR WORK SHALL BE THE SAME TYPE SHAPE AS POSTS ADJACENT TO THE REPAIR AREA UNLESS OTHERWISE DIRECTED BY THE ENGINEER. NO USED MATERIALS WILL BE PERMITTED.



FILE NAME =	USER NAME = edouardj	DESIGNED -	REVISED -
c:\pwwork\p1dot\edouardj\d0306593\0142112-sht-pln.dgn		DRAWN -	REVISED -
Default	PLOT SCALE = 99.9994' / in.	CHECKED -	REVISED -
	PLOT DATE = 6/22/2012	DATE -	REVISED -

**STATE OF ILLINOIS
DEPARTMENT OF TRANSPORTATION**

SPECIAL FENCE DETAILS

SCALE: SHEET OF SHEETS STA. TO STA.

F.A. RTE.	SECTION	COUNTY	TOTAL SHEETS	SHEET NO.
VAR	2012-020 I	VARIOUS	14	13
CONTRACT NO. 60T72			ILLINOIS FED. AID PROJECT	

