

F.A. RTE.	SECTION	COUNTY	TOTAL SHEETS	SHEET NO.
VAR.	2012-021 GRR	VARIOUS	22	1
FED. ROAD DIST. NO.	ILLINOIS	CONTRACT NO. 60T73		

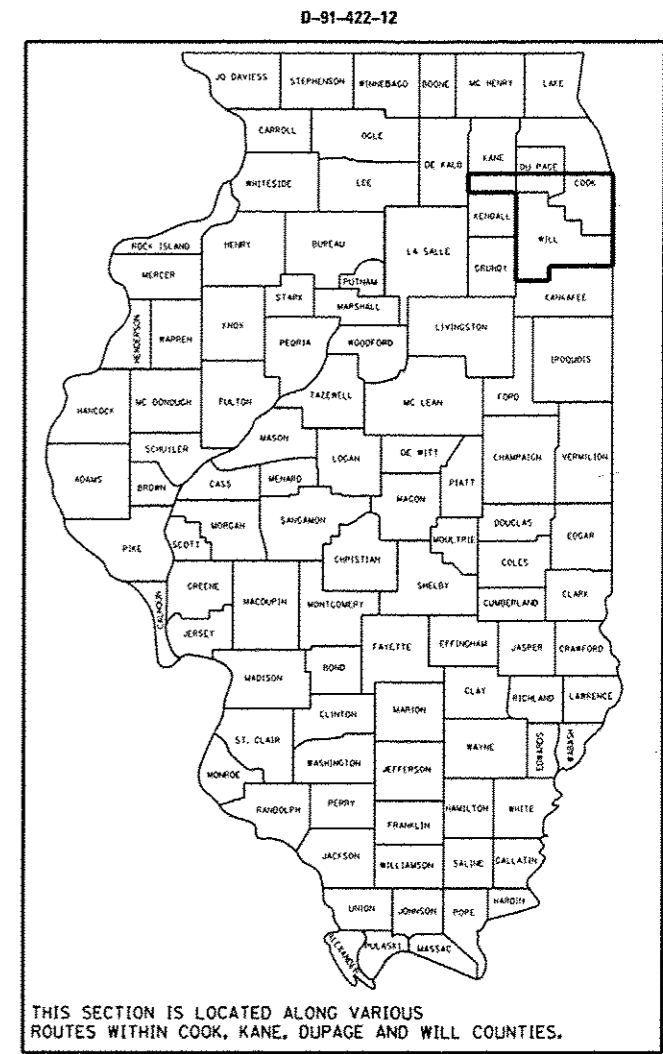
11-9-12 LETTING ITEM 063

STATE OF ILLINOIS  
DEPARTMENT OF TRANSPORTATION  
DIVISION OF HIGHWAYS

**PROPOSED  
HIGHWAY PLANS**

FOR INDEX OF SHEETS, SEE SHEET NO. 2

**ROUTE: VARIOUS EXPRESSWAYS AND ARTERIAL  
HIGHWAYS – SOUTHERN PART, DISTRICT ONE  
GUARDRAIL REPAIR  
SECTION: 2012-021 GRR  
COUNTY: VARIOUS  
C-91-422-12**



**SEE LOCATION MAPS  
SHEETS 4 THRU 7**

C.U.A.N.  
CHICAGO UTILITY ALERT NETWORK  
1-312-744-7000

J.U.L.I.E.  
JOINT UTILITY LOCATION INFORMATION FOR EXCAVATION  
1-800-892-0123  
OR 811

PROJECT ENGINEER: ROBERT BORO (847) 705-4237  
PROJECT MANAGER: ISSAM RAYYAN

CONTRACT NO. 60T73

STATE OF ILLINOIS  
DEPARTMENT OF TRANSPORTATION  
DIVISION OF HIGHWAYS

SUBMITTED *August 22 20 12*  
*John Forstmann*  
DEPUTY DIRECTOR OF HIGHWAYS, REGION ENGINEER

*October 5 20 12*  
*John D. Baranzelli, P.E.*  
acting ENGINEER OF DESIGN AND ENVIRONMENT

*October 5 20 12*  
*William R. Frey*  
acting DIRECTOR OF HIGHWAYS, CHIEF ENGINEER

**PRINTED BY THE AUTHORITY  
OF THE STATE OF ILLINOIS**

**INDEX OF SHEETS**

1. TITLE SHEET
2. INDEX OF SHEETS  
LIST OF APPLICABLE STATE STANDARDS  
GENERAL NOTES
- 3-4. SUMMARY OF QUANTITIES
5. COOK COUNTY LOCATION MAP
6. KANE COUNTY LOCATION MAP
7. DUPAGE COUNTY LOCATION MAP
8. WILL COUNTY LOCATION MAP
9. TYPICAL DETAIL TO ANCHOR STEEL PLATE BEAM  
GUARDRAIL ON CONCRETE (BM-02)
10. TYPICAL DETAIL FOR GUARDRAIL ANCHOR BLOCK REPAIR (BM-03)
11. TYPICAL DETAILS FOR STEEL PLATE BEAM  
GUARDRAIL ANCHORAGE REPAIR (BM-04)
12. DETAIL FOR CENTER LONGITUDINAL GUARDRAIL JOINT (BM-05)
13. DETAIL OF STEEL PLATE BEAM GUARDRAIL SPECIAL (BM-06)
14. DETAIL OF GUARDRAIL SUPPORT AND END ANCHORAGE (BM-07)
15. DETAIL OF THRIE-BEAM GUARDRAIL WITH MODIFIED OFFSET BLOCK
16. STEEL PLATE BEAM GUARDRAIL STEEL BLOCK-OUT DETAIL
17. CURB REMOVAL (PARTIAL) AND SHOULDER WIDENING  
FOR TRAFFIC BARRIER TERMINAL, TYPE 1, SPECIAL
18. STEEL BRIDGE RAIL DETAIL
- 19-21. T6 TERMINAL FOR USE WITH 21" HIGH SPBGR (BM-22)
22. TRAFFIC CONTROL DETAIL FOR SHOULDER CLOSURE AND PARTIAL  
RAMP CLOSURE (TC-17)

**LIST OF STATE STANDARDS**

- |           |   |
|-----------|---|
| 630001-10 | STEEL PLATE BEAM GUARDRAIL  |
| 630301-05 | SHOULDER WIDENING FOR TYPE 1 (SPECIAL) GUARDRAIL TERMINALS            |
| 631006-08 | TRAFFIC BARRIER TERMINAL, TYPE 1B                                     |
| 631011-08 | TRAFFIC BARRIER TERMINAL, TYPE 2                                      |
| 631026-05 | TRAFFIC BARRIER TERMINAL, TYPE 5                                      |
| 631031-10 | TRAFFIC BARRIER TERMINAL, TYPE 6                                      |
| 631036-05 | TRAFFIC BARRIER TERMINAL, TYPE 8                                      |
| 635006-03 | REFLECTOR AND TERMINAL MARKER PLACEMENT                               |
| 635011-02 | REFLECTOR MARKER AND MOUNTING DETAILS                                 |
| 701006-03 | OFF-RD OPERATIONS, 2L, 2W, 15' TO 24" FROM PAVEMENT EDGE              |
| 701011-02 | OFF-RD MOVING OPERATIONS, 2L, 2W, DAY ONLY                            |
| 701101-02 | OFF-RD OPERATIONS, MULTILANE, 15' TO 24" FROM PAVEMENT EDGE           |
| 701201-04 | LANE CLOSURE, 2L, 2W, DAY ONLY, FOR SPEEDS ≥ 45 MPH                   |
| 701301-04 | LANE CLOSURE, 2L, 2W, SHORT TIME OPERATIONS                           |
| 701400-05 | APPROACH TO LANE CLOSURE, FREEWAY/EXPRESSWAY                          |
| 701401-06 | LANE CLOSURE, FREEWAY/EXPRESSWAY                                      |
| 701406-06 | LANE CLOSURE, FREEWAY/EXPRESSWAY, DAY OPERATIONS ONLY                 |
| 701411-08 | LANE CLOSURE, MULTILANE, AT ENTRANCE OR EXIT RAMP, FOR SPEED ≥ 45 MPH |
| 701501-06 | URBAN LANE CLOSURE, 2L, 2W, UNDIVIDED                                 |
| 701606-08 | URBAN LANE CLOSURE, MULTILANE, 2W WITH MOUNTABLE MEDIAN               |
| 701701-08 | URBAN LANE CLOSURE, MULTILANE INTERSECTION                            |
| 701801-05 | LANE CLOSURE MULTILANE 1W OR 2W CROSSWALK OR SIDEWALK CLOSURE         |
| 701901-02 | TRAFFIC CONTROL DEVICES   |
| 720011-01 | METAL POSTS FOR SIGNS, MARKERS & DELINEATORS                          |

**GENERAL NOTES**

BEFORE STARTING ANY EXCAVATION, THE CONTRACTOR SHALL CALL "J.U.L.I.E." AT (800) 892-0123 OR 811 OR "C.U.A.N." AT (312) 744-700 FOR FIELD LOCATIONS OF BURIED ELECTRIC, TELEPHONE AND GAS UTILITIES. 48 HOUR NOTIFICATION IS REQUIRED

ALL WORK IS TO BE REPLACED IN KIND OR AS INDICATED ON THE CONTRACT QUANTITY SHEET.

GUARDRAIL WORK WILL INCLUDE ALIGNMENT AS NECESSARY TO RESTORE THE RAIL TO THE ORIGINAL CONDITIONS.

REMOVAL OF DAMAGED MATERIALS WILL INCLUDE DISMANTLING, LOADING, HAULING AND DISPOSAL. THE WORK SITE WILL BE LEFT IN A SAFE AND ORDERLY CONDITION.

NO MATERIAL SHOULD BE LEFT ON OR NEAR THE ROADWAY DURING NON-WORKING HOURS.

ANY NECESSARY TRAFFIC CONTROL WILL BE PROVIDED BY THE CONTRACTOR; APPROPRIATE STANDARDS ARE HEREWITH ATTACHED.

THE LIMITS OF THE DAMAGED GUARDRAIL WILL BE MARKED WITH PAINT. THE REPLACEMENT PARTS AND THE QUANTITIES INDICATED ARE WITHIN THESE LIMITS AS MARKED.

REMOVED GUARDRAIL THAT IS NOT REPLACED ON THE SAME DAY MUST BE DELINEATED WITH LIGHTED BARRICADES. NO LOCATIONS WILL BE LEFT WITHOUT EITHER LIGHTED BARRICADES OR RESTORED GUARDRAIL AT ANY TIME.

GUARDRAIL MARKERS SHALL NOT BE ATTACHED TO TERMINAL SECTIONS.

THE CONTRACTOR SHALL TELEPHONE THE IDOT BUREAU OF TRAFFIC OPERATIONS, ELECTRICAL MAINTENANCE SECTION AT 708-524-2145 TO REQUEST THE LOCATE FOR INDEGROUND ELECTRICAL AND/OR FIBER CABLE PRIOR TO ANY DIGGING AS PER THE CONTRACT.

REMOVAL OF EXISTING TERMINAL SECTIONS INCLUDED IN COST OF NEW TERMINAL SECTIONS

FILE NAME *	USER NAME * pyrzanowski	DESIGNED -	REVISED -	<b>STATE OF ILLINOIS DEPARTMENT OF TRANSPORTATION</b>	<b>INDEX OF SHEETS, STATE STANDARDS AND GENERAL NOTES</b>	F.A. RTE.	SECTION	COUNTY	TOTAL SHEETS	SHEET NO.	
ct:\pr-work\p1\dot\pyrzanowski-b\030599-0142212-sht-plan.dgn	0142212-sht-plan.dgn	DRAWN -	REVISED -			VAR.	2012-021 GRR	VARIOUS	22	2	
PLOT SCALE * 99.9998 1/1 in.		CHECKED -	REVISED -			SCALE: SHEET NO. OF SHEETS STA. TO STA.					
PLOT DATE * 8/14/2012		DATE -	REVISED -			FED. ROAD DIST. NO. ILLINOIS FED. AID PROJECT					
						<b>CONTRACT NO. 60TT3</b>					

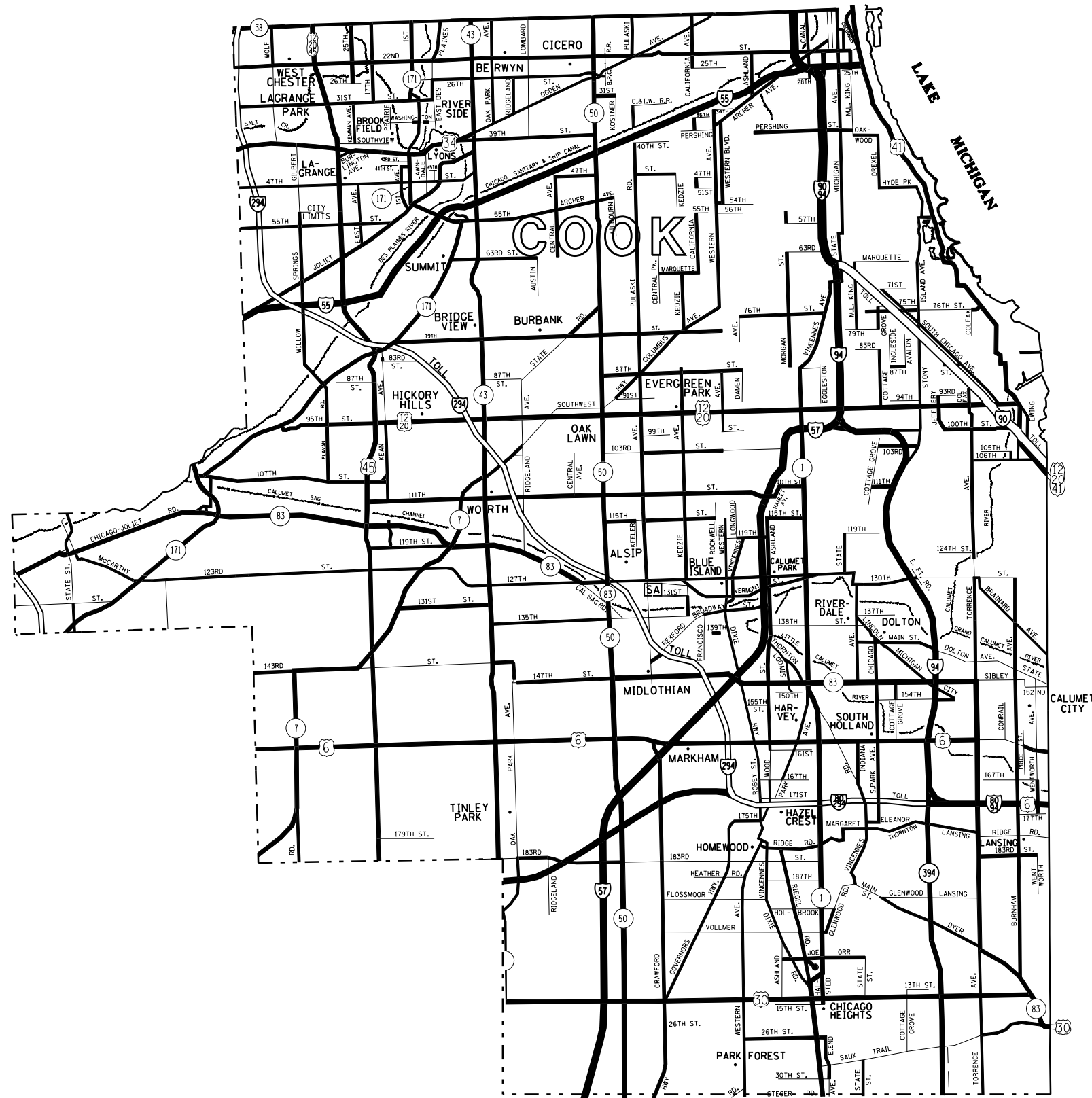
SUMMARY OF QUANTITIES				CONSTRUCTION TYPE CODE 0021					SUMMARY OF QUANTITIES				CONSTRUCTION TYPE CODE 0021						
CODE NO	ITEM	UNIT	TOTAL QUANTITIES	100% STATE	100% MCHD					CODE NO	ITEM	UNIT	TOTAL QUANTITIES	100% STATE	100% MCHD				
				0021	0021									0021	0021				
6300001	STEEL PLATE BEAM GUARDRAIL, TYPE A, 6 FOOT POSTS	FOOT	76	61	15					X6300225	SINGLE END SECTION	EACH	6	5	1				
63100041	TRAFFIC BARRIER TERMINAL, TYPE 1B	EACH	2	1	1					X6300230	STEEL POSTS	EACH	760	646	114				
63100045	TRAFFIC BARRIER TERMINAL, TYPE 2	EACH	5	3	2					X6300610	THRIE BEAM GUARDRAIL ELEMENT PLATES	EACH	3	2	1				
63100070	TRAFFIC BARRIER TERMINAL, TYPE 5	EACH	2	1	1					X6300620	THRIE-BEAM MODIFIED BLOCKS	EACH	3	2	1				
63100085	TRAFFIC BARRIER TERMINAL, TYPE 6	EACH	2	1	1					X6300630	THRIE-BEAM POSTS	EACH	3	2	1				
63100167	TRAFFIC BARRIER TERMINAL, TYPE 1 (SPECIAL) TANGENT	EACH	29	23	6					X6300640	THRIE BEAM RADIUS ELEMENT PLATES	EACH	3	2	1				
63100169	TRAFFIC BARRIER TERMINAL, TYPE 1 (SPECIAL) FLARED	EACH	5	4	1					X6310163	TRAFFIC BARRIER TERMINAL, TYPE 1, NOSE	EACH	5	4	1				
78200410	GUARDRAIL MARKERS, TYPE A	EACH	304	243	61					X6310177	TRAFFIC BARRIER TERMINAL, TYPE 3 (SPECIAL)	EACH	3	2	1				
78201000	TERMINAL MARKER - DIRECT APPLIED	EACH	8	6	2					X6310203	TRAFFIC BARRIER TERMINAL, TYPE 3 SPECIAL, NOSE	EACH	2	1	1				
X0321563	REPAIR TRAFFIC BARRIER TERMINAL TYPE 1 SPECIAL	EACH	190	152	38					X6330800	GUARDRAIL POST VERTICAL ADJUSTMENT	EACH	15	12	3				
X4402302	CURB REMOVAL (PARTIAL)	FOOT	76	61	15					X6331105	STEEL POSTS, MODIFIED	EACH	12	10	2				
X6300210	GUARDRAIL BLOCKS	EACH	912	775	137					X6331110	STEEL POSTS, SPECIAL	EACH	11	9	2				
X6300215	RAIL ELEMENT PLATES	EACH	1140	912	228					Z0007124	STEEL RAILING (SPECIAL)	FOOT	38	30	8				
X6300217	RAIL ELEMENT PLATES (RADIUS)	EACH	76	61	15					Z0029656	REPAIR TRAFFIC BARRIER TERMINAL TYPE 3 SPECIAL	EACH	6	5	1				
X6300222	CONNECTING ENC SECTION	EACH	2	1	1					Z0029658	REPAIR TRAFFIC BARRIER TERMINAL TYPE 1 SPECIAL - POST	EACH	259	207	52				
X6300224	RETURN END SECTION	O23	2	1	1					Z0051400	REMOVING AND RESETTING POSTS	EACH	38	30	8				


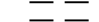
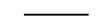
FILE NAME :	USER NAME : pyz20045110	DESIGNED -	REVISED -	STATE OF ILLINOIS DEPARTMENT OF TRANSPORTATION	SUMMARY OF QUANTITIES	F.A. RTE.	SECTION	COUNTY	TOTAL SHEETS	SHEET NO.
cdpr_workeplanpyz20045110030698904202-01-010101	DRAWN -	REVISED -	VAR.			2012-021 GRR	VARIOUS	22	3	
PLOT SCALE : 1/8" = 1'-0"	CHECKED -	REVISED -	CONTRACT NO. 60773							
PLOT DATE : 8/24/2012	DATE -	REVISED -	SCALE:			SHEET NO. OF SHEETS	STA. TO STA.	FED. ROAD DIST. NO. 1 ILLINOIS FED. AID PROJECT		

CONT. MAIN.

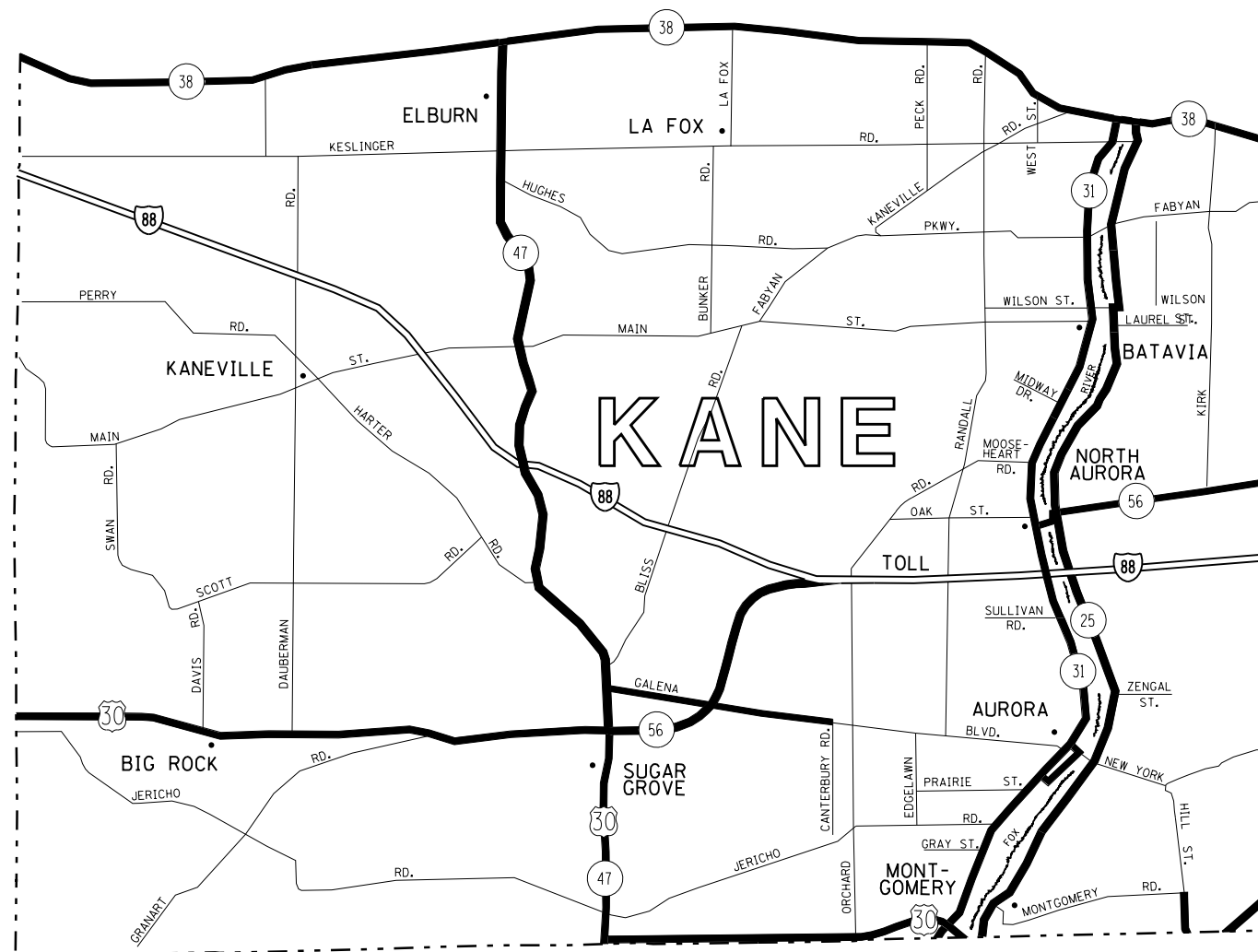
SUMMARY OF QUANTITIES				CONSTRUCTION TYPE CODE 0021						SUMMARY OF QUANTITIES				CONSTRUCTION TYPE CODE					
CODE NO	ITEM	UNIT	TOTAL QUANTITIES	100% STATE	100% MCHD					CODE NO	ITEM	UNIT	TOTAL QUANTITIES						
				0021	0021														
Z0052100	REPAIR STEEL PLATE BEAM GUARDRAIL, TYPE B	FOOT	99	79	20														
Z0052200	REPAIR STEEL PLATE BEAM GUARDRAIL, TYPE C	FOOT	38	30	8														
Z0052400	REPAIR TRAFFIC BARRIER TERMINAL, TYPE 1	EACH	2	1	1														
Z0052550	REPAIR TRAFFIC BARRIER TERMINAL, TYPE 1B	EACH	2	1	1														
Z0052600	REPAIR TRAFFIC BARRIER TERMINAL, TYPE 2	EACH	23	18	5														
Z0052900	REPAIR TRAFFIC BARRIER TERMINAL, TYPE 4	EACH	3	2	1														
Z0053000	REPAIR TRAFFIC BARRIER TERMINAL, TYPE 5	EACH	3	2	1														
Z0053200	REPAIR TRAFFIC BARRIER TERMINAL, TYPE 6	EACH	3	2	1														
Z0059660	REPAIR TRAFFIC BARRIER TERMINAL TYPE 1 SPECIAL - RAIL ELEMENT PLATE	EACH	76	61	15														
Z0078000	WOOD RAIL	FOOT	200	160	40														
X6300310	REMOVE GUARDRAIL CHANNEL AND REPLACE	EACH	45	36	9														

FILE NAME :	USER NAME : Dyr2009s110	DESIGNED -	REVISED -	STATE OF ILLINOIS DEPARTMENT OF TRANSPORTATION	SUMMARY OF QUANTITIES	F.A. -	SECTION	COUNTY	TOTAL SHEETS	SHEET NO.
VAR.	2012-021 GRR	VARIOUS	22			4				
CONTRACT NO. 60773										
SCALE:	SHEET NO. OF SHEETS	STA. TO STA.	FED. ROAD DIST. NO. 1 ILLINOIS FED. AID PROJECT							
PLOT SCALE = 1/8" = 100.0000' / 1"		CHECKED -	REVISED -							
PLOT DATE = 8/24/2012		DATE -	REVISED -							



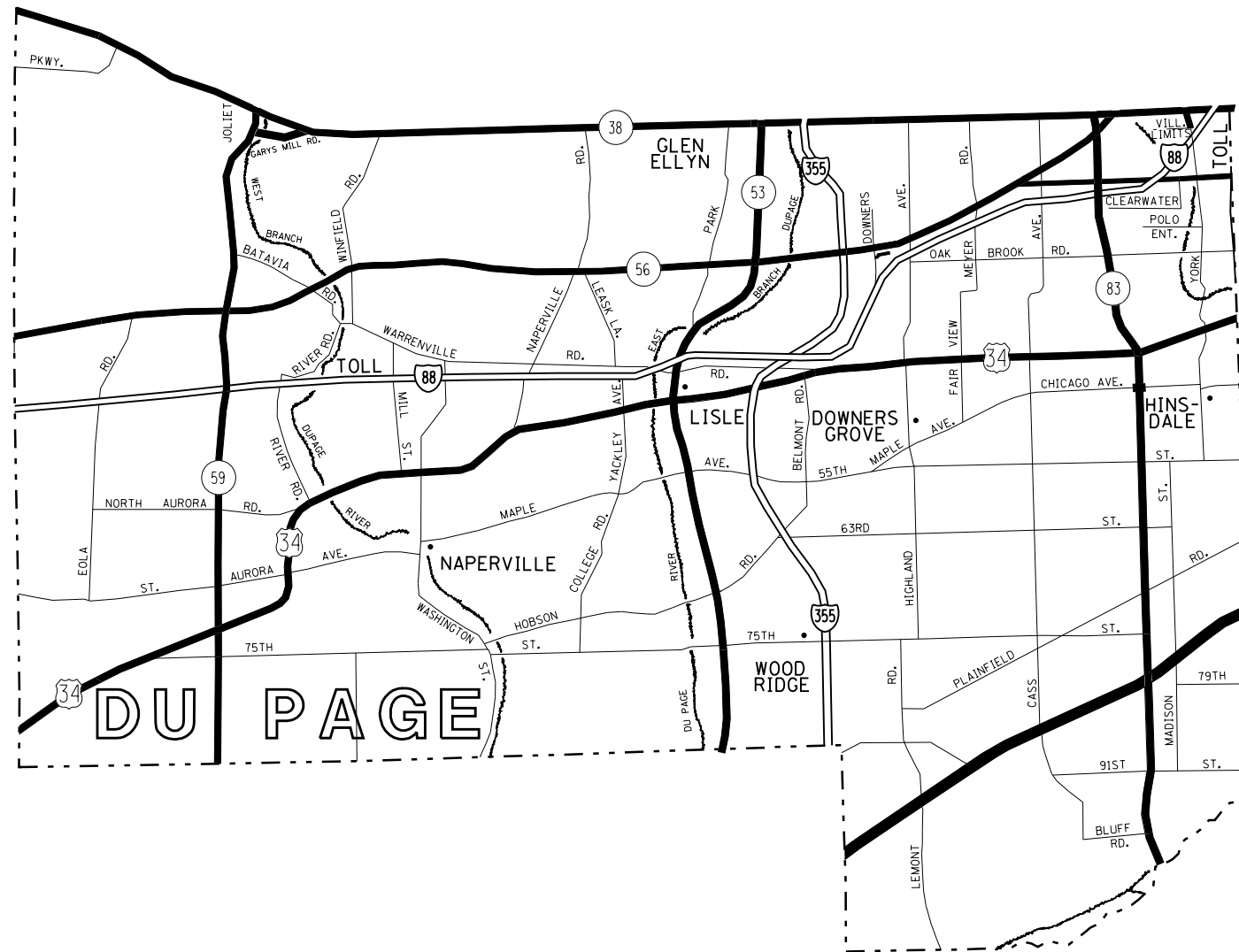
- DISTRICT NO. 1**
-  STATE HIGHWAYS & EXPRESSWAYS WITHIN STATE JURISDICTION, (EXCEPT TOLLWAYS) AND CITY MAINTENANCE AGREEMENTS UNDER STATE JURISDICTION
  -  FUTURE HIGHWAYS
  -  VARIOUS AGENCIES HIGHWAYS

FILE NAME =	USER NAME = pyrzanowskirb	DESIGNED -	REVISED -	<b>STATE OF ILLINOIS DEPARTMENT OF TRANSPORTATION</b>	<b>GUARDRAIL REPAIR LOCATION MAP COOK COUNTY SOUTH OF IL RTE 38</b>			F.A. RTE.	SECTION	COUNTY	TOTAL SHEETS	SHEET NO.
et:\pw\work\p\dot\pyrzanowskirb\d030698	ND142212-sht-plan.dgn	DRAWN -	REVISED -					VAR.	2012-021 GRR	VARIOUS	22	5
	PLOT SCALE = 99.9998' / in.	CHECKED -	REVISED -		SCALE:			SHEET NO. OF SHEETS STA. TO STA.		CONTRACT NO. 60173		
	PLOT DATE = 7/26/2012	DATE -	REVISED -		FED. ROAD DIST. NO. ILLINOIS FED. AID PROJECT							



- DISTRICT NO. 1**
- STATE HIGHWAYS & EXPRESSWAYS WITHIN STATE JURIDICTION. (EXCEPT TOLLWAYS) AND CITY MAINTENANCE AGREEMENTS UNDER STATE JURIDICTION
  - FUTURE HIGHWAYS
  - VARIOUS AGENCIES HIGHWAYS

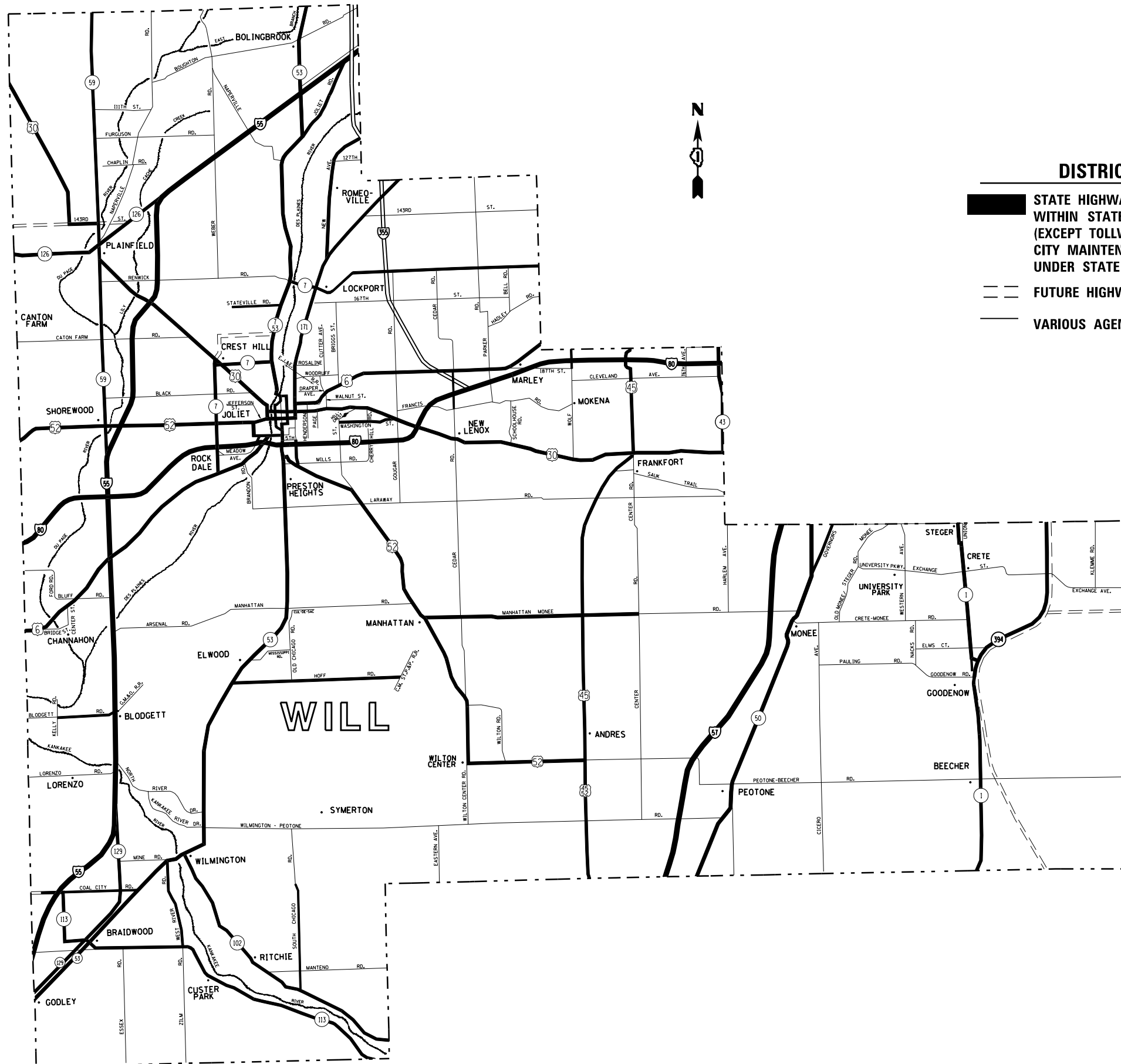
FILE NAME =	USER NAME = pyrzanowskirb	DESIGNED -	REVISED -	<b>STATE OF ILLINOIS DEPARTMENT OF TRANSPORTATION</b>	<b>GUARDRAIL REPAIR LOCATION MAP KANE COUNTY SOUTH OF IL RTE 38</b>			F.A. RTE.	SECTION	COUNTY	TOTAL SHEETS	SHEET NO.		
et:\pw\work\p\dot\pyrzanowskirb\d030698	ND142212-sht-plan.dgn	DRAWN -	REVISED -		SCALE:	SHEET NO.	OF SHEETS	STA.	TO STA.	VAR.	2012-021 GRR	VARIOUS	22	6
	PLOT SCALE = 99,9998 ' / in.	CHECKED -	REVISED -											
	PLOT DATE = 7/26/2012	DATE -	REVISED -											
										<b>CONTRACT NO. 60T73</b>		ILLINOIS FED. AID PROJECT		



**DISTRICT NO. 1**

- STATE HIGHWAYS & EXPRESSWAYS WITHIN STATE JURISDICTION. (EXCEPT TOLLWAYS) AND CITY MAINTENANCE AGREEMENTS UNDER STATE JURISDICTION
- FUTURE HIGHWAYS
- VARIOUS AGENCIES HIGHWAYS

FILE NAME =	USER NAME = pyrzanoskirb	DESIGNED -	REVISED -	<b>STATE OF ILLINOIS DEPARTMENT OF TRANSPORTATION</b>	<b>GUARDRAIL REPAIR LOCATION MAP DuPAGE COUNTY SOUTH OF IL RTE 38</b>	F.A. RTE.	SECTION	COUNTY	TOTAL SHEETS	SHEET NO.	
et:\pw\work\p\dot\pyrzanoskirb\d030698	ND142212-sht-plan.dgn	DRAWN -	REVISED -			VAR.	2012-021 GRR	VARIOUS	22	7	
	PLOT SCALE = 99.9998' / in.	CHECKED -	REVISED -			<b>CONTRACT NO. 60T73</b>					
	PLOT DATE = 7/26/2012	DATE -	REVISED -			FED. ROAD DIST. NO. ILLINOIS FED. AID PROJECT					
					SCALE:	SHEET NO.	OF SHEETS	STA.	TO STA.		



**DISTRICT NO. 1**

- STATE HIGHWAYS & EXPRESSWAYS WITHIN STATE JURISDICTION, (EXCEPT TOLLWAYS) AND CITY MAINTENANCE AGREEMENTS UNDER STATE JURISDICTION**
- FUTURE HIGHWAYS**
- VARIOUS AGENCIES HIGHWAYS**

FILE NAME =	USER NAME = pyrzanowskirb	DESIGNED -	REVISED -
et:\pw\work\p\dot\pyrzanowskirb\d030698	ND142212-sht-plan.dgn	DRAWN -	REVISED -
	PLOT SCALE = 99.9998 ' / in.	CHECKED -	REVISED -
	PLOT DATE = 7/26/2012	DATE -	REVISED -

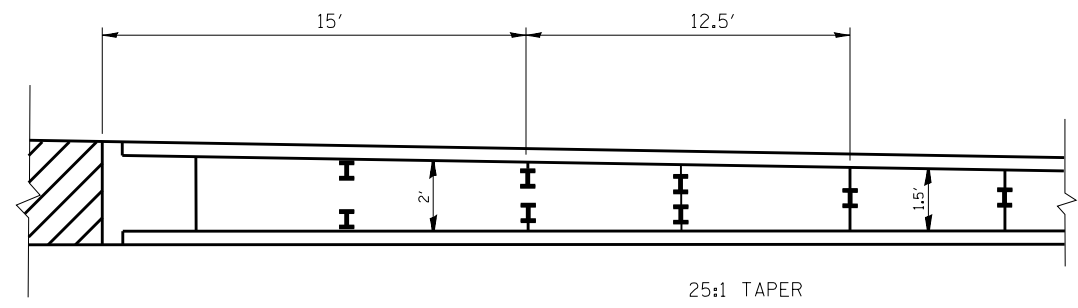
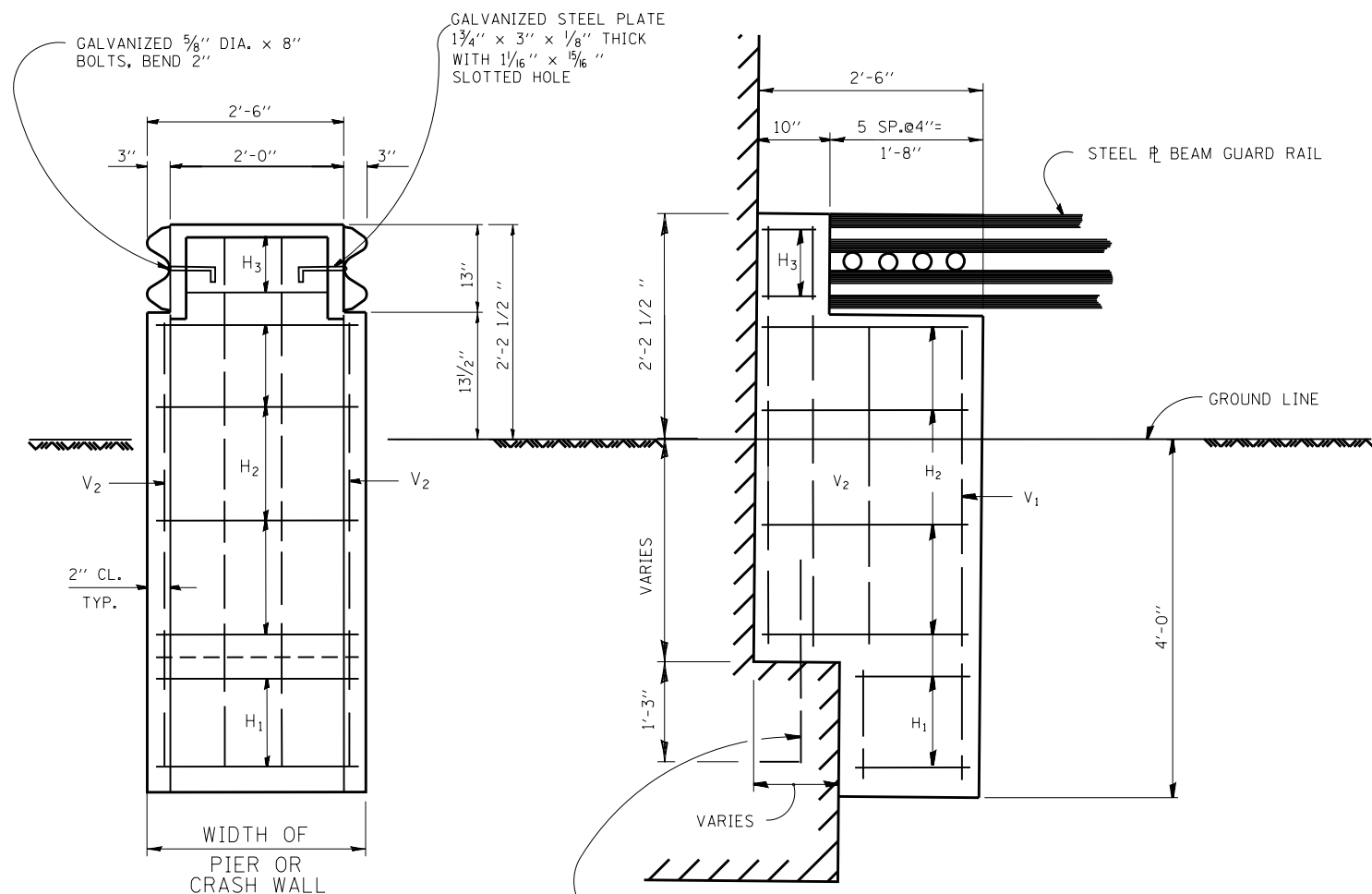
**STATE OF ILLINOIS  
DEPARTMENT OF TRANSPORTATION**

**GUARDRAIL REPAIR LOCATION MAP  
WILL COUNTY**

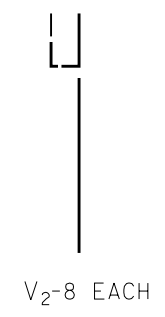
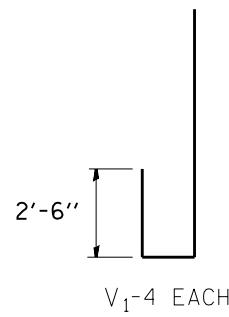
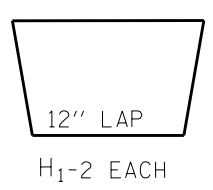
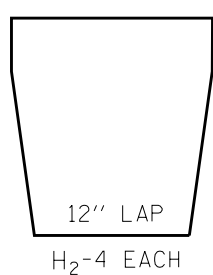
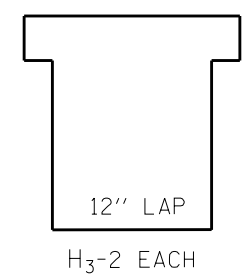
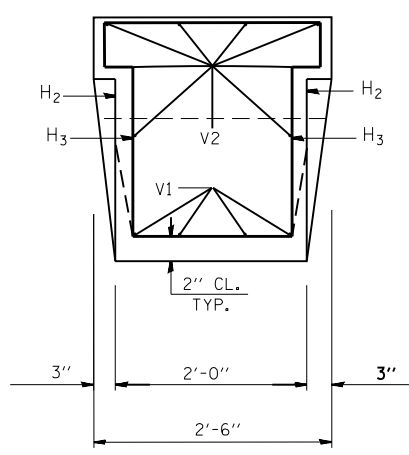
SCALE: SHEET NO. OF SHEETS STA. TO STA.

F.A. RTE.	SECTION	COUNTY	TOTAL SHEETS	SHEET NO.
VAR.	2012-021 GRR	VARIOUS	22	8
<b>CONTRACT NO. 60173</b>				
FED. ROAD DIST. NO. ILLINOIS FED. AID PROJECT				

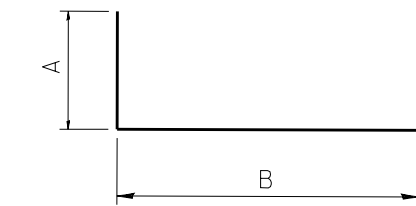
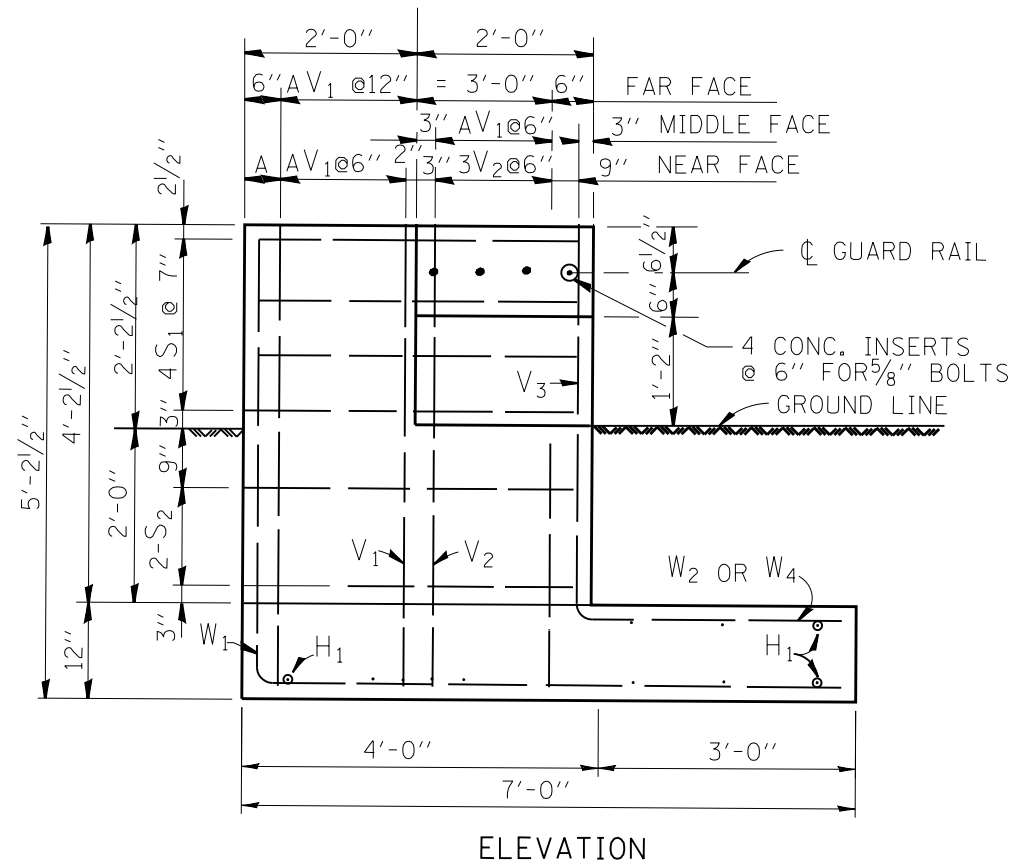




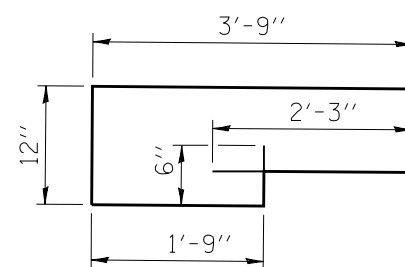
NOTES: CLASS SI CONCRETE SHALL BE USED THROUGHOUT REINFORCEMENT TO BE SIZE #4 UNLESS OTHERWISE NOTED



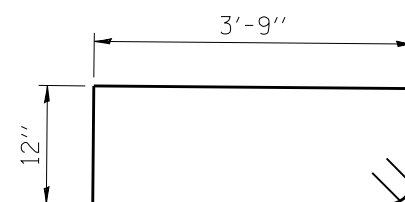
FILE NAME =	USER NAME = pyrzanowskirb	DESIGNED -	REVISED -	<b>STATE OF ILLINOIS DEPARTMENT OF TRANSPORTATION</b>	<b>TYPICAL DETAILS FOR STEEL PLATE BEAM GUARDRAIL ANCHORAGE REPAIR</b>			F.A. RTE.	SECTION	COUNTY	TOTAL SHEETS	SHEET NO.
et:\pwork\pwork\pyrzanowskirb\d030698\0142212-sht-plan.dgn	PLOT SCALE = 99.9998 ' / in.	DRAWN -	REVISED -					VAR.	2012-021 GRR	VARIOUS	22	9
PLOT DATE = 7/26/2012	DATE -	CHECKED -	REVISED -		SCALE: SHEET NO. OF SHEETS STA. TO STA.			CONTRACT NO. 60T73				
					FED. ROAD DIST. NO. ILLINOIS FED. AID PROJECT							



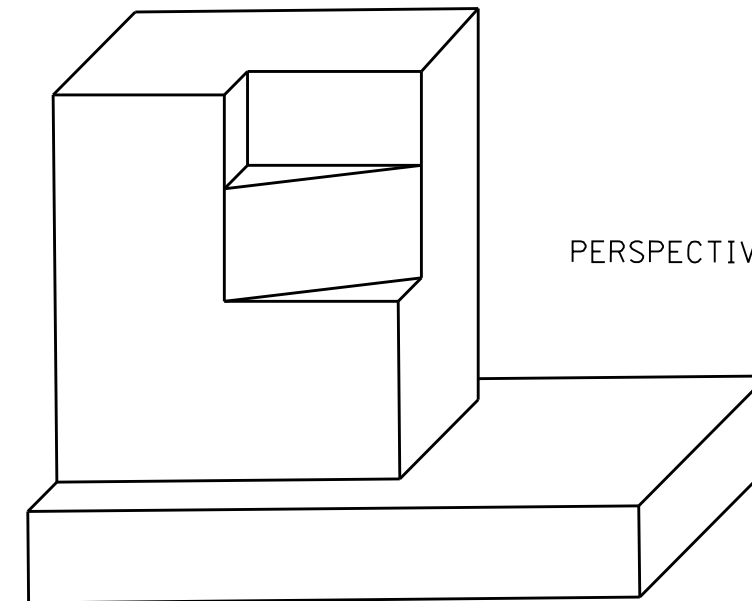
BAR	A	B	A+B
V <sub>1</sub>	4'-8"	6"	5'-2"
V <sub>2</sub>	2'-6"	6"	3'-0"
W <sub>1</sub>	4'-8"	6'-6"	11'-2"
W <sub>2</sub>	2'-0"	3'-0"	5'-0"
W <sub>4</sub>	4'-2"	3'-0"	7'-2"



S<sub>1</sub> BAR

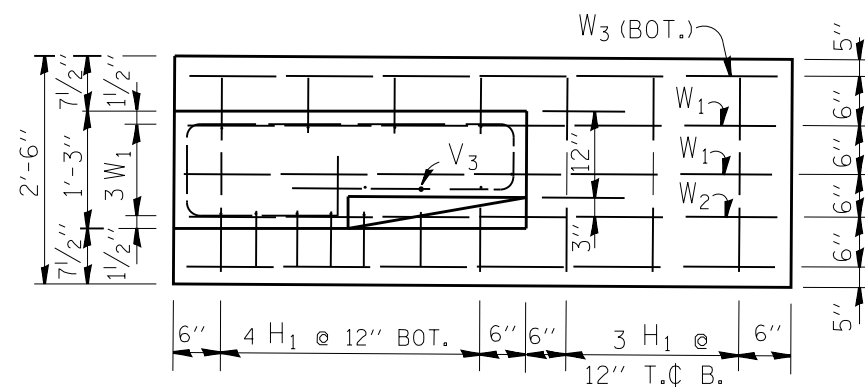


S<sub>2</sub> BAR



PERSPECTIVE VIEW

NOTES: CLASS SI CONCRETE SHALL BE USED THROUGHOUT  
REINFORCEMENT TO BE SIZE #4 UNLESS OTHERWISE NOTED



FOOTING PLAN

BAR SCHEDULE

BAR	NO.	LENGTH
V <sub>1</sub>	8	5'-2"
V <sub>2</sub>	3	3'-0"
V <sub>3</sub>	4	3'-0"
W <sub>1</sub>	3	11'-2"
W <sub>2</sub>	1	5'-0"
W <sub>3</sub>	2	6'-6"
W <sub>4</sub>	2	7'-2"
S <sub>1</sub>	4	10'-0"
S <sub>2</sub>	2	10'-0"
H <sub>1</sub>	1	2'-3"

THIS SHEET IS FOR INFORMATION ONLY

FILE NAME =	USER NAME = pyrzanowski	DESIGNED -	REVISED -	<b>STATE OF ILLINOIS DEPARTMENT OF TRANSPORTATION</b>	<b>TYPICAL DETAIL FOR GUARDRAIL ANCHOR BLOCK REPAIR</b>			F.A. RTÉ.	SECTION	COUNTY	TOTAL SHEETS	SHEET NO.
et:\pw\work\p\dot\pyrzanowski\bd030698\142212-sht-plan.dgn	PLOT SCALE = 99.9998 ' / in.	DRAWN -	REVISED -					VAR.	2012-021 GRR	VARIOUS	22	10
PLOT DATE = 7/26/2012	DATE -	CHECKED -	REVISED -		SCALE: SHEET NO. OF SHEETS STA. TO STA.			CONTRACT NO. 60T73				
		DATE -	REVISED -		FED. ROAD DIST. NO. ILLINOIS FED. AID PROJECT							

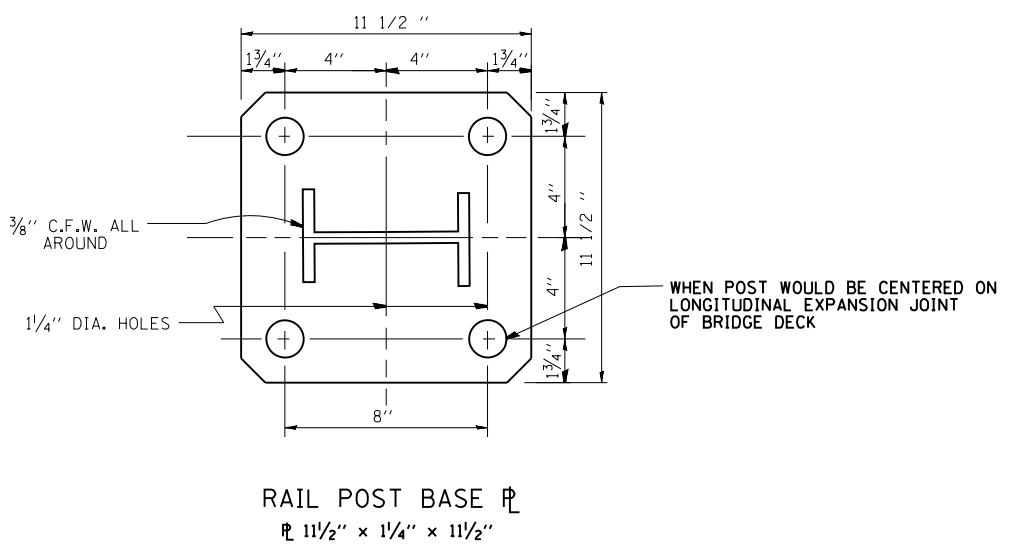
NOTE:  
FOR DETAILS OF RAIL ELEMENTS, RAIL SPLICING, NUT, BOLT AND SIDE VIEW OF RAIL, SEE STANDARD 630001

ALL WELDS SHALL BE GROUND SMOOTH

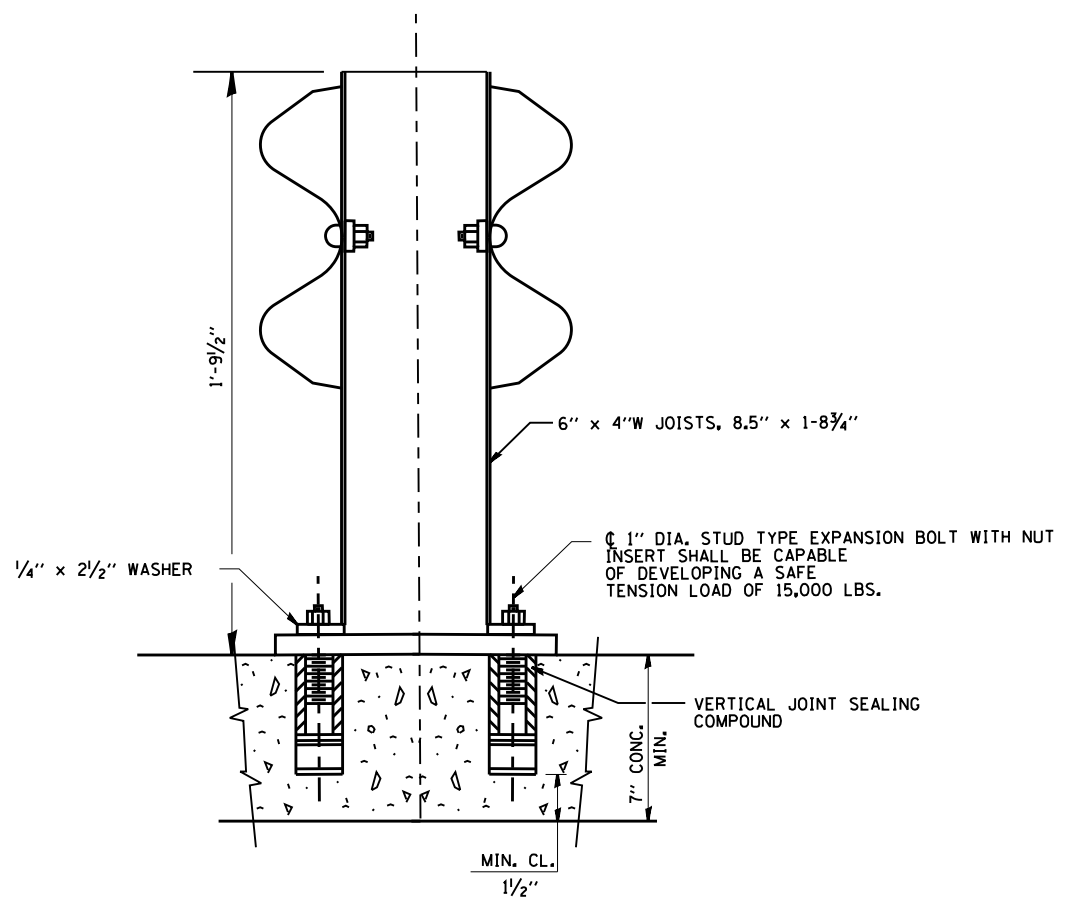
POSTS SHALL BE CUT AND WELDED TO THE BASE PLATE SO THAT THE POST WILL BE PLUMB WHEN ERECTED.

TWO PERCENT (2%) OF ALL ANCHOR BOLTS SHALL BE TEST LOADED IN PLACE, MINIMUM TEST LOAD=8 KIPS. IF ONE ANCHOR BOLT FAILS DURING THE TEST, TWO OTHER ANCHOR BOLTS SHALL BE TESTED. TESTING EQUIPMENT SHALL BE BOLT COMPANIES.

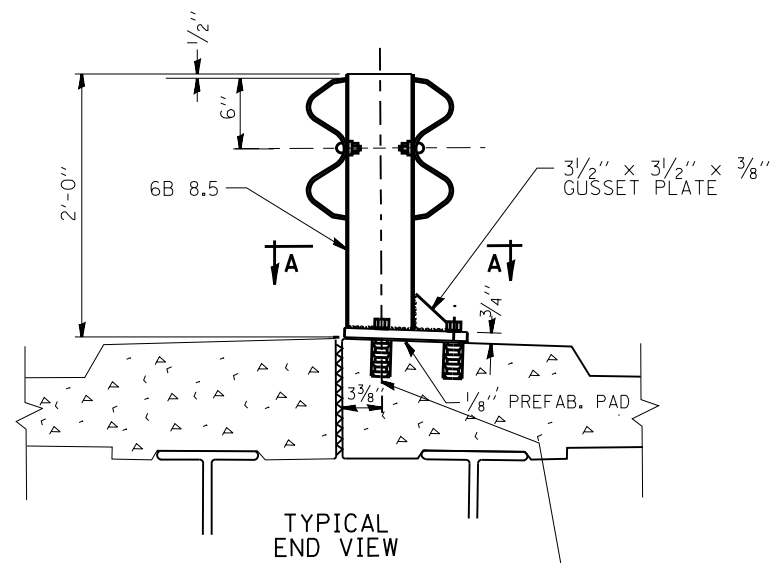
PROVIDE 1/8" AND 2/16" GALVANIZED SHIMS FOR 25% OF THE POSTS.



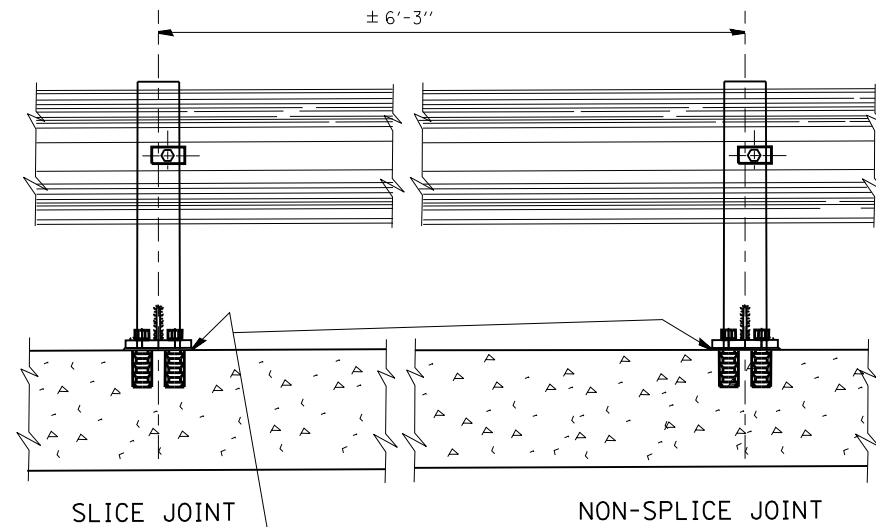
**NOTE:**  
ALL WELDS SHALL BE GROUND SMOOTH. POSTS SHALL BE CUT AND WELDED TO THE TO THE BASE PLATE SO THAT THE POSTS WILL BE PLUMB WHEN ERECTED.



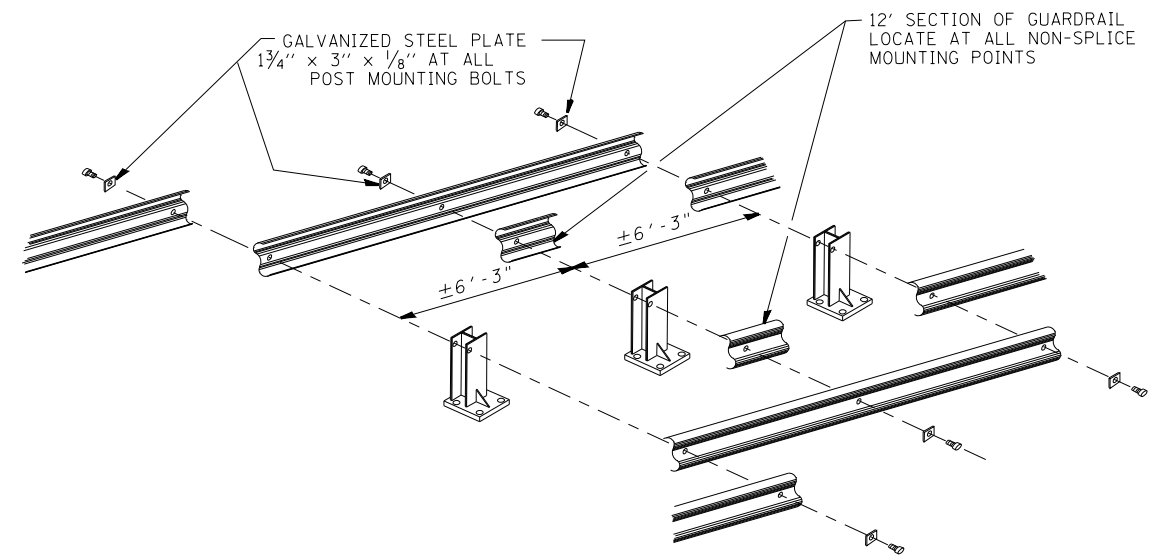
FILE NAME =	USER NAME = pyrzanowskirb	DESIGNED -	REVISED -	<b>STATE OF ILLINOIS DEPARTMENT OF TRANSPORTATION</b>	<b>ANCHOR DETAIL FOR STEEL PLATE BEAM RAIL ON CONCRETE</b>			F.A. RTÉ.	SECTION	COUNTY	TOTAL SHEETS	SHEET NO.
et:\pw\work\p\dot\pyrzanowskirb\d030698	ND142212-sht-plan.dgn	DRAWN -	REVISED -					VAR.	2012-021 GRR	VARIOUS	22	11
	PLOT SCALE = 99.9998 ' / in.	CHECKED -	REVISED -		SCALE: SHEET NO. OF SHEETS STA. TO STA.			CONTRACT NO. 60T73				
	PLOT DATE = 7/26/2012	DATE -	REVISED -					FED. ROAD DIST. NO. ILLINOIS FED. AID PROJECT				



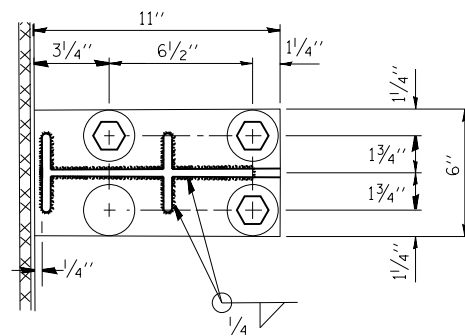
3 1/2" x 3 1/2" x 3/8" GUSSET PLATE  
 2'-0"  
 6B 8.5  
 6"  
 1/2"  
 3/4"  
 1/8" PREFAB. PAD  
 3/8" GALVANIZED ANCHOR BOLTS AND SELF DRILLING EXPANSION SHELLS OR MULTI UNIT TYPE ANCHORS  
 1/8" HOLES THRU BASE PLATE



SEAL PERIMETER OF BASE OF POST TO MEDIAN WITH TWO COMPONENT NON-STAINING GRAY SEALING COMPOUND WITH POLYSULFIDE LIQUID POLYMERS - GUN GRADE WITH PRIMER



NOTE:  
 DIAMOND TIPPED DRILL SHALL BE USED TO DRILL THRU REINFORCEMENT BARS



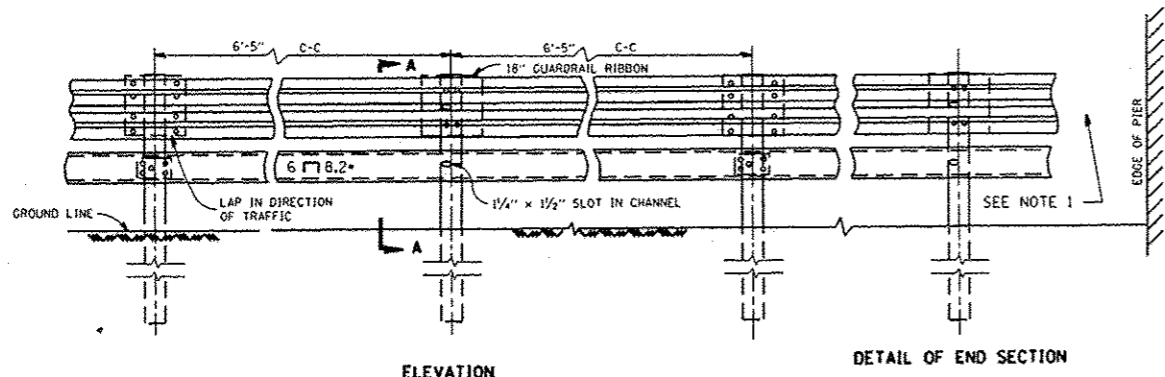
SEC. A-A

NOTE:

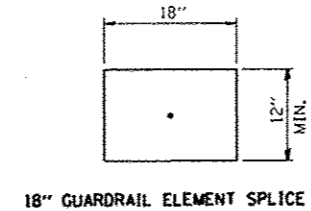
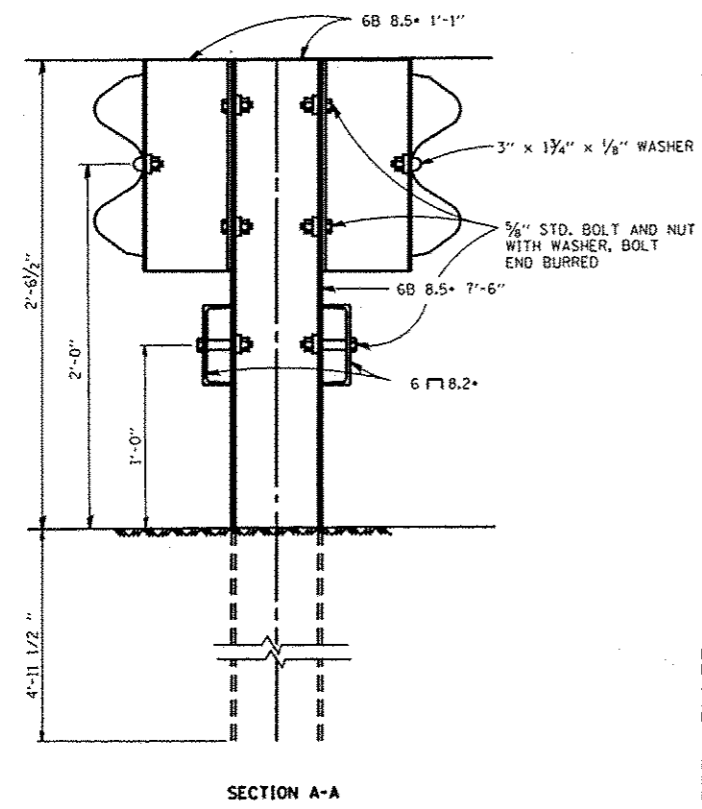
POSTS SHALL BE HOT DIPPED GALVANIZED AFTER FABRICATION IN ACCORDANCE WITH ASTM DESIGNATIONS A-123 AND A-385.  
 TWO PERCENT (2%) OF ALL ANCHOR BOLTS SHALL BE TEST LOADED IN PLACE. MIN. TEST LOAD = 8 KIPS.  
 ALL BOLTS, NUTS AND WASHERS SHALL BE GALVANIZED IN ACCORDANCE WITH ASTM DESIGNATION A-153.  
 FOR MATERIAL COMPOSITION OF PREFABRICATED PAD, SEE ARTICLE 54.9(F), (BEARING AND ANCHORAGE), OF THE STANDARD SPECIFICATIONS.  
 PROVIDE 1-1/8" AND 2-1/16" GALVANIZED STEEL SHIMS FOR 25% OF THE POSTS.  
 IF ONE ANCHOR BOLT FAILS DURING TEST, TWO OTHER ANCHOR BOLTS SHALL BE TESTED. TESTING EQUIPMENT CAN BE OBTAINED FROM BOLT COMPANIES.

THIS SHEET IS FOR INFORMATION ONLY

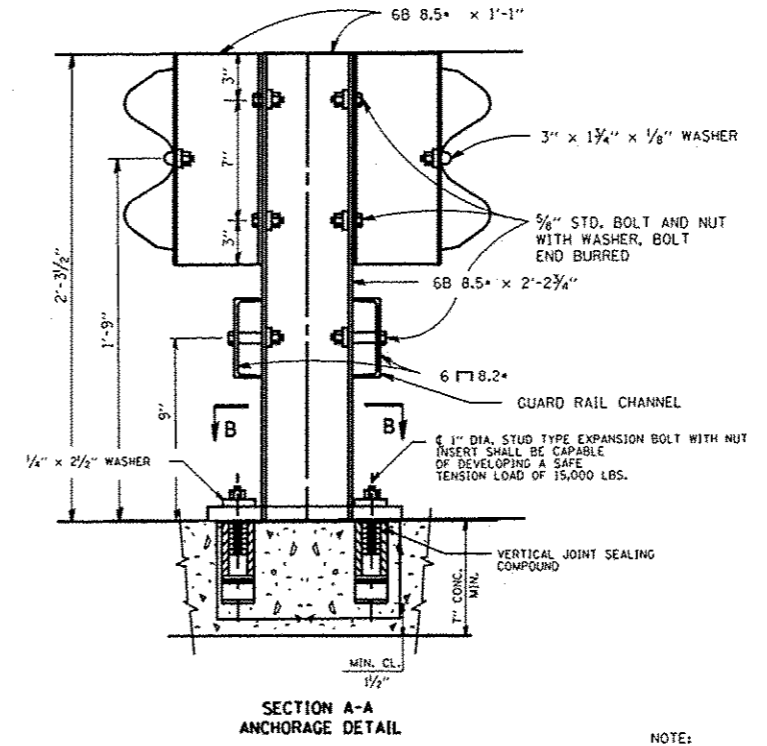
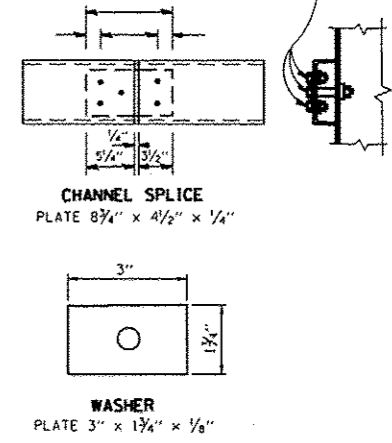
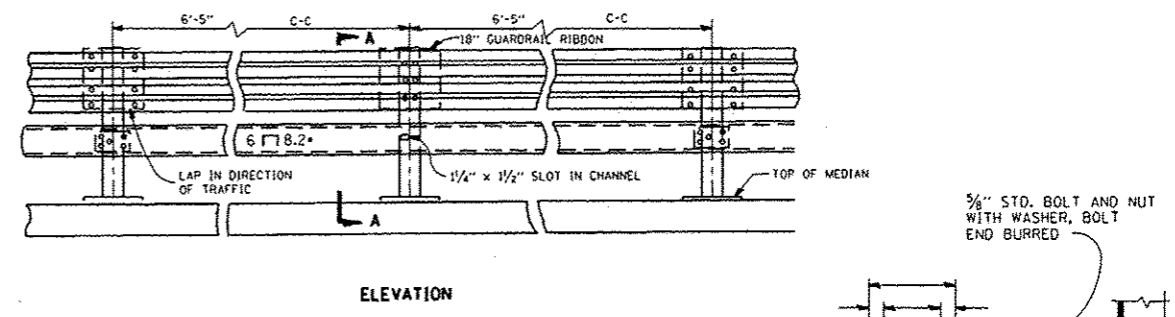
FILE NAME =	USER NAME = pyrzanowski	DESIGNED -	REVISED -	STATE OF ILLINOIS DEPARTMENT OF TRANSPORTATION	TYPICAL DETAIL FOR CENTER LONGITUDINAL JOINT GUARDRAIL JOINT				F.A. RTE.	SECTION	COUNTY	TOTAL SHEETS	SHEET NO.	
c:\pwwork\pwwork\pyrzanowski\030698	VD142212-sht-plan.dgn	DRAWN -	REVISED -		SCALE:	SHEET NO.	OF SHEETS	STA.	TO STA.	VAR.	2012-021 GRR	VARIOUS	22	12
	PLOT SCALE = 99.9998 ' / in.	CHECKED -	REVISED -						CONTRACT NO. 60T73					
	PLOT DATE = 7/26/2012	DATE -	REVISED -						FED. ROAD DIST. NO. ILLINOIS FED. AID PROJECT					



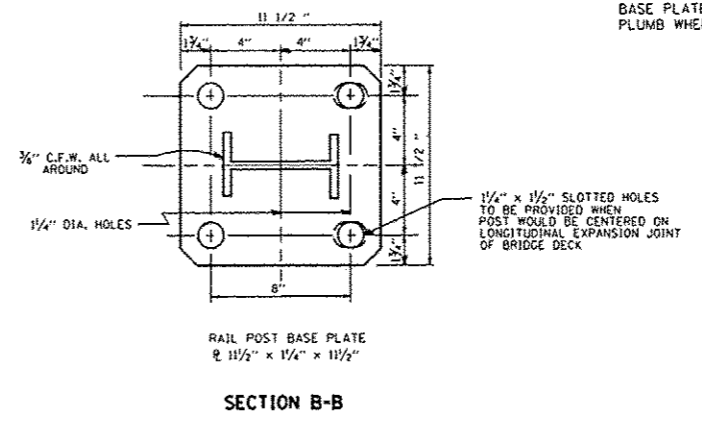
NOTE 1:  
FOR DETAILS OF GUARDRAIL END ANCHORAGE  
AT PIERS, SEE SHEET NO. \_\_\_



NOTE:  
FOR DETAIL OF RAIL ELEMENT, RAIL SPLICING, BOLT,  
AND NUT, SEE STATE STANDARD 630001.  
A 1 3/8" x 3" x 1/8" STEEL PLATE WASHER AS SHOWN ON THIS  
DRAWING SHALL BE PLACED BETWEEN THE BOLT HEAD  
AND THE GUARDRAIL RIBBON AT ALL MOUNTING POINTS.  
AN 18" PIECE OF GUARDRAIL RIBBON SHALL BE INSERTED  
BETWEEN THE CONTINUOUS RIBBON AND THE POST AT  
NON-SLICE MOUNTING POINTS.  
RAIL, CHANNELS, POSTS, BASE PLATES, FASTENINGS,  
AND ALL OTHER EXPOSED ACCESSORIES SHALL BE  
GALVANIZED.

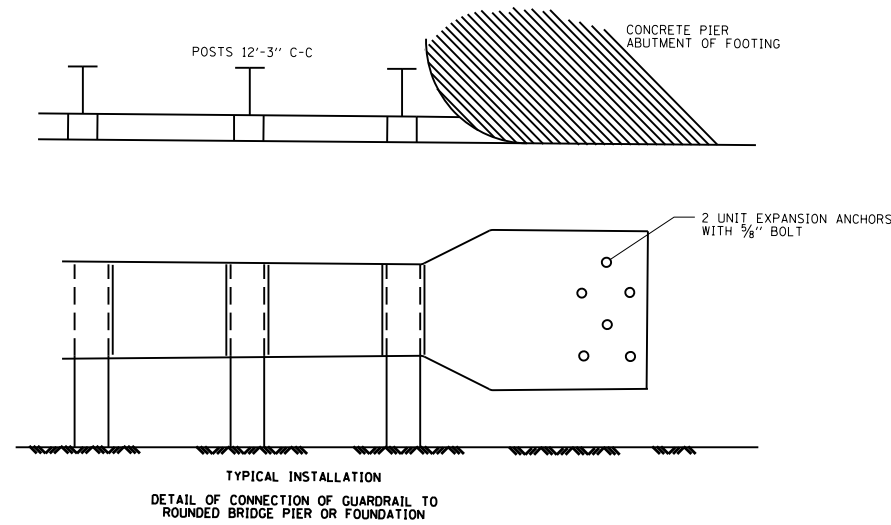
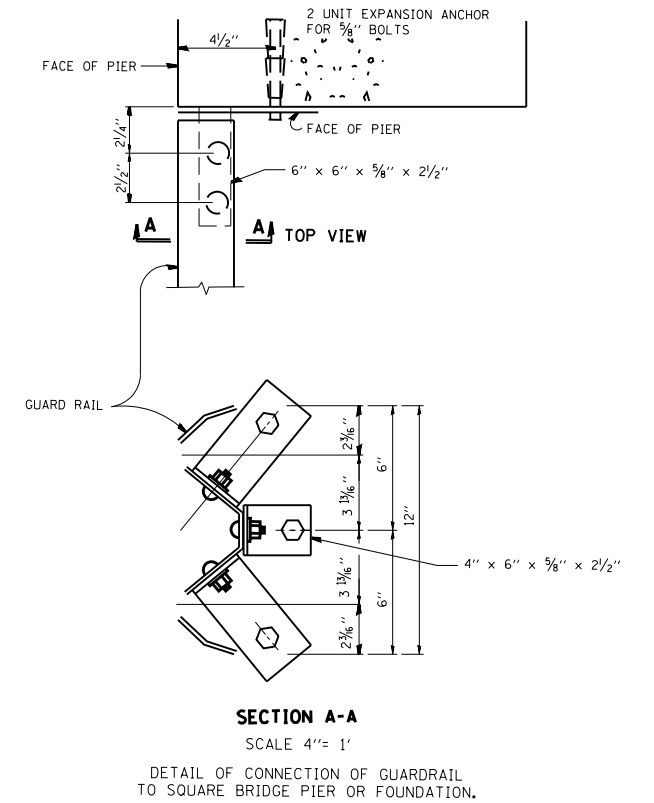
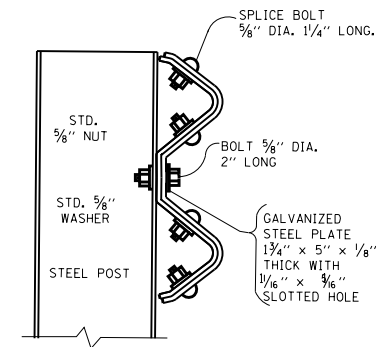
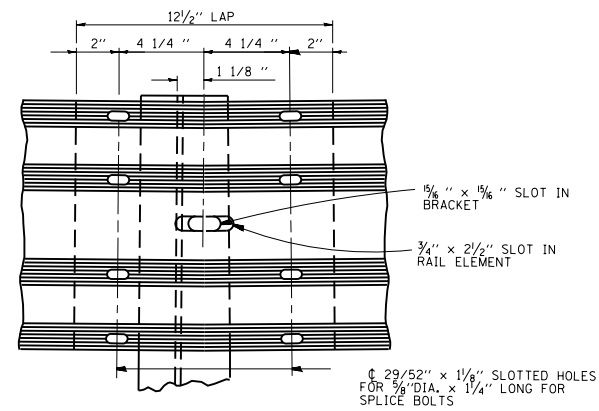
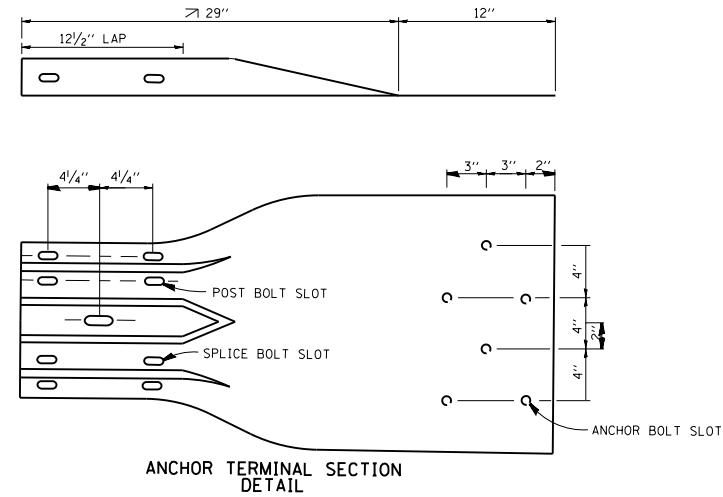


NOTE:  
ALL WELDS SHALL BE GROUND SMOOTH.  
POSTS SHALL BE CUT AND WELDED TO THE  
BASE PLATE SO THAT THE POSTS WILL BE  
PLUMB WHEN ERECTED.



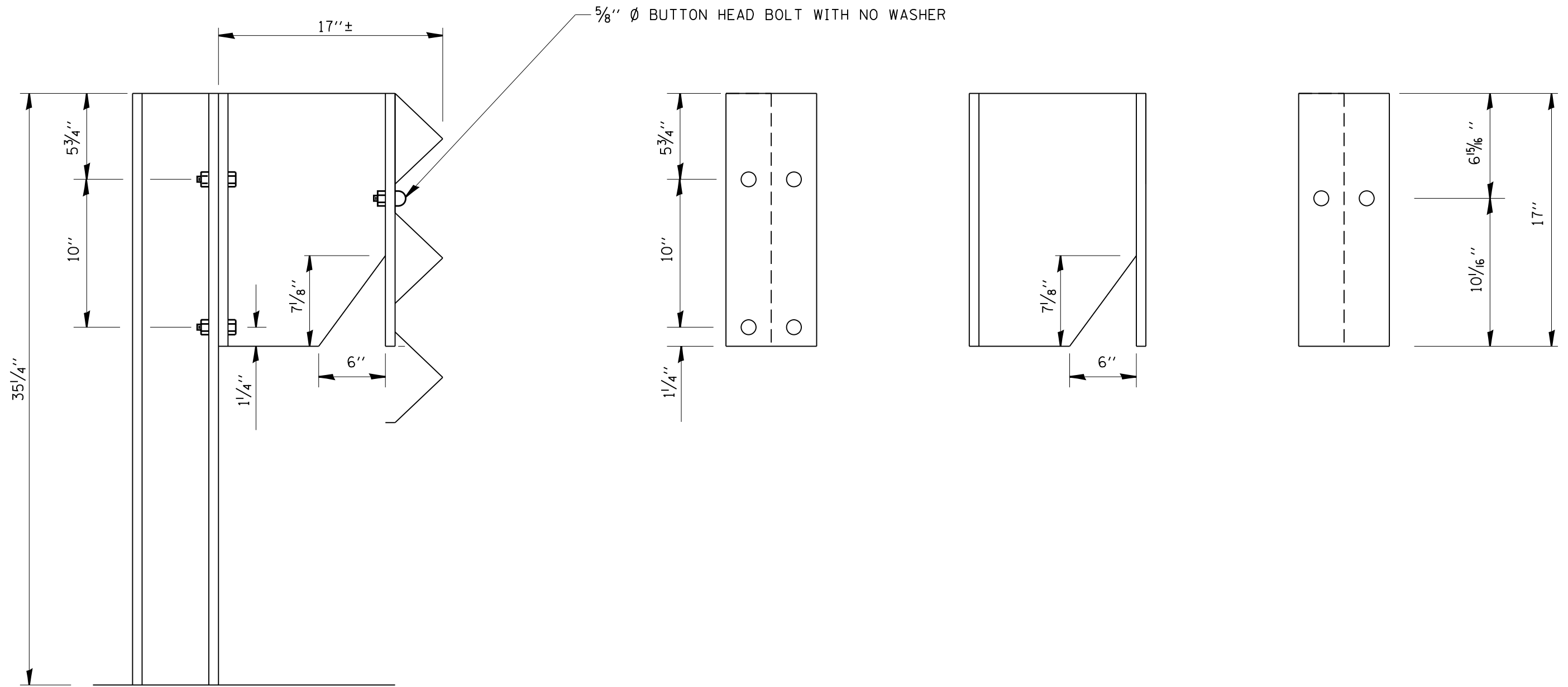
THIS SHEET IS FOR INFORMATION ONLY

FILE NAME =	USER NAME = pyrczanowski	DESIGNED -	REVISED -	STATE OF ILLINOIS DEPARTMENT OF TRANSPORTATION	STEEL PLATE BEAM GUARDRAIL SPECIAL	F.A. R.T.E. VAR.	SECTION	COUNTY	TOTAL SHEETS	SHEET NO.
c:\pwwork\pwwork\pyrczanowski\d030598	D0142212-shs-plan.dgn	DRAWN -	REVISED -			2012-021 GRR	VARIOUS	22	13	
	PLOT SCALE = 99.9998 1/16"	CHECKED -	REVISED -			CONTRACT NO. 60T73				
	PLOT DATE = 7/26/2012	DATE -	REVISED -			FED. ROAD DIST. NO.	ILLINOIS FED. AID PROJECT			
				SCALE:	SHEET NO. OF SHEETS	STA. TO STA.				



THIS SHEET IS FOR INFORMATION ONLY

FILE NAME =	USER NAME = pyrzezanowski	DESIGNED -	REVISED -	<b>STATE OF ILLINOIS DEPARTMENT OF TRANSPORTATION</b>	<b>DETAIL OF GUARDRAIL SUPPORT AND END ANCHORAGE</b>				F.A. RTÉ.	SECTION	COUNTY	TOTAL SHEETS	SHEET NO.	
es:\pwork\pwork\pyrzezanowski\d030698	ND142212-sht-plan.dgn	DRAWN -	REVISED -		SCALE:	SHEET NO.	OF SHEETS	STA.	TO STA.	VAR.	2012-021 GRR	VARIOUS	22	14
	PLOT SCALE = 99.9998 / in.	CHECKED -	REVISED -						<b>CONTRACT NO. 60T73</b>					
	PLOT DATE = 7/26/2012	DATE -	REVISED -						FED. ROAD DIST. NO.	ILLINOIS	FED. AID PROJECT			

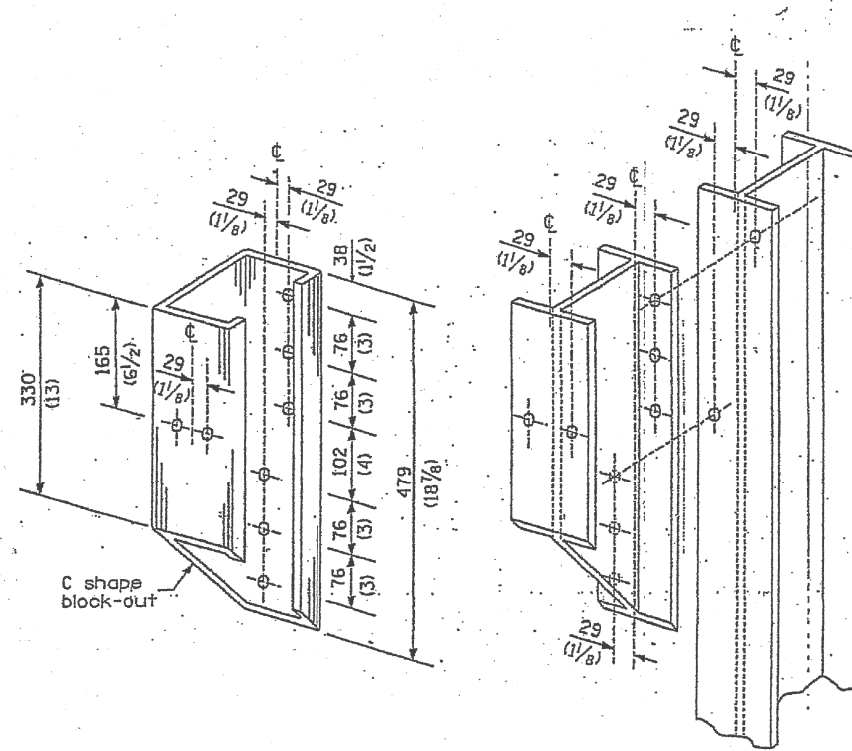


FILE NAME =	USER NAME = pyrzanowskirb	DESIGNED -	REVISED -
ct:\pw\work\p\dot\pyrzanowskirb\d030698	D142212-sht-plan.dgn	DRAWN -	REVISED -
	PLOT SCALE = 99.9998 ' / in.	CHECKED -	REVISED -
	PLOT DATE = 7/26/2012	DATE -	REVISED -

**STATE OF ILLINOIS  
DEPARTMENT OF TRANSPORTATION**

<b>DETAIL THRIE BEAM GUARDRAIL WITH MODIFIED OFFSET BLOCK</b>			
SCALE:	SHEET NO.	OF SHEETS	STA. TO STA.

F.A. RTE.	SECTION	COUNTY	TOTAL SHEETS	SHEET NO.
VAR.	2012-021 GRR	VARIOUS	22	15
CONTRACT NO. 60T73				
FED. ROAD DIST. NO. ILLINOIS FED. AID PROJECT				



STEEL BLOCK-OUT AND  
STEEL POST DETAILS

FILE NAME =	USER NAME = pyrzanowskirb	DESIGNED -	REVISED -
et:\pw\work\p\dot\pyrzanowskirb\d030698	D142212-sht-plan.dgn	DRAWN -	REVISED -
Default	PLOT SCALE = 100.0000' / in.	CHECKED -	REVISED -
	PLOT DATE = 7/26/2012	DATE -	REVISED -

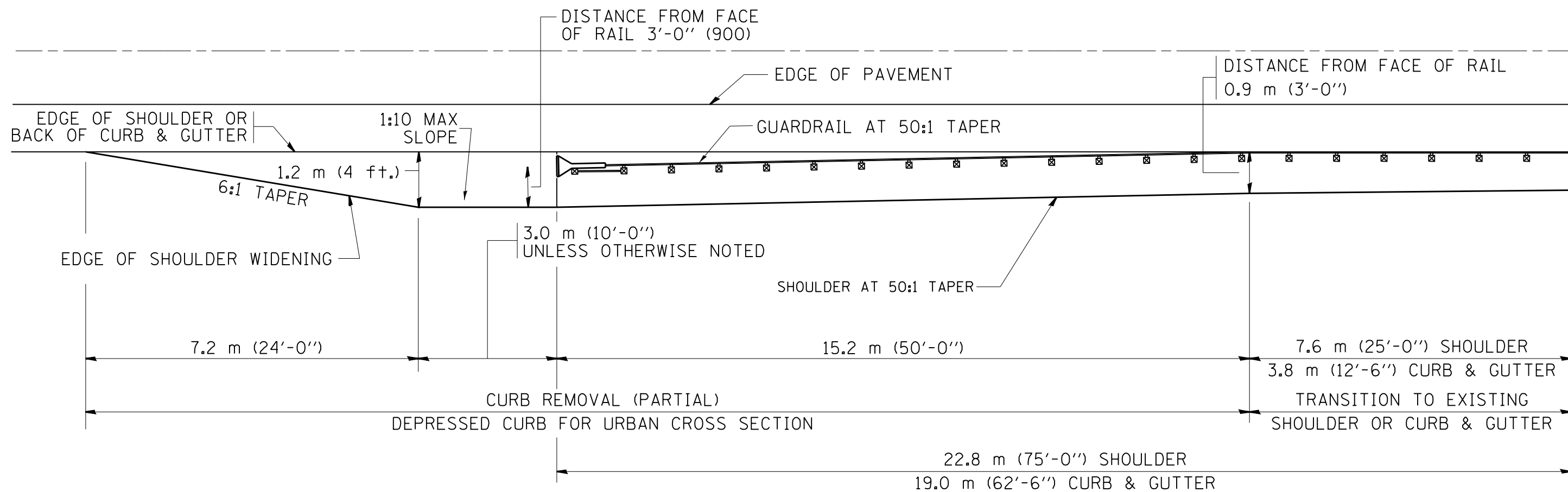
**STATE OF ILLINOIS  
DEPARTMENT OF TRANSPORTATION**

**STEEL PLATE BEAM GUARDRAIL  
STEEL BLOCK-OUT DETAIL**

SCALE: SHEET OF SHEETS STA. TO STA.

F.A. RTE.	SECTION	COUNTY	TOTAL SHEETS	SHEET NO.
VAR.	2012-021 GRR	VARIOUS	22	16
			<b>CONTRACT NO. 60T73</b>	
ILLINOIS FED. AID PROJECT				



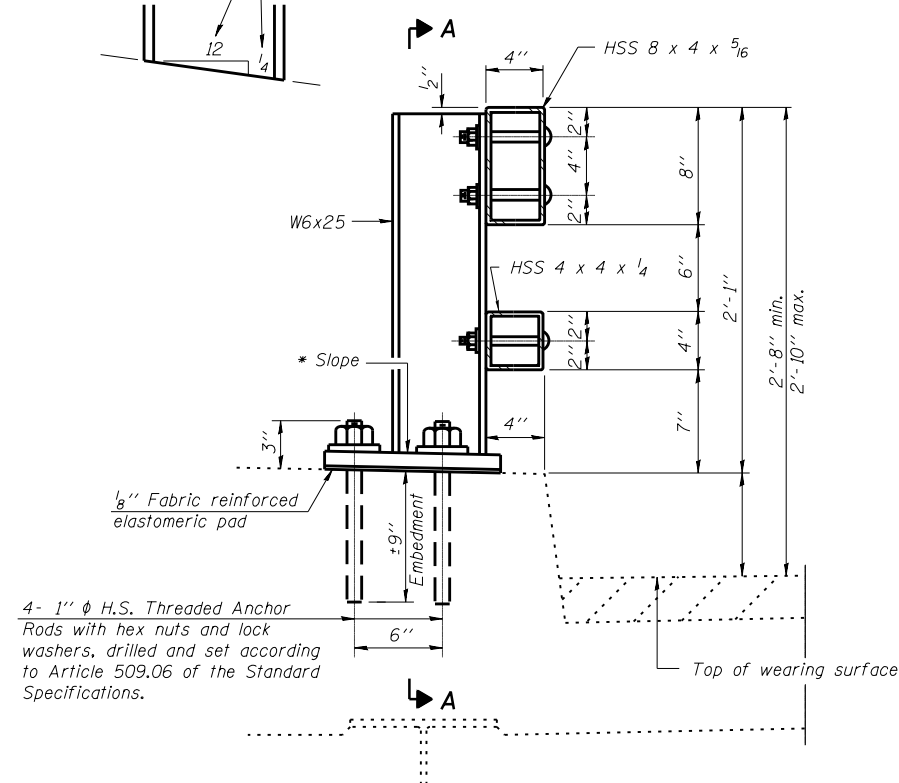


NOTES: THE CONTRACTOR SHALL VERIFY THE TYPE/HEIGHT OF GUARDRAIL IN-PLACE BEFORE ORDERING THE NEW TERMINAL SECTION. COST INCLUDED WITH THE COST OF THE TERMINAL. THE TERMINAL SECTION HEIGHT TO BE PLACED MUST MATCH THE HEIGHT OF THE IN-PLACE GUARDRAIL.

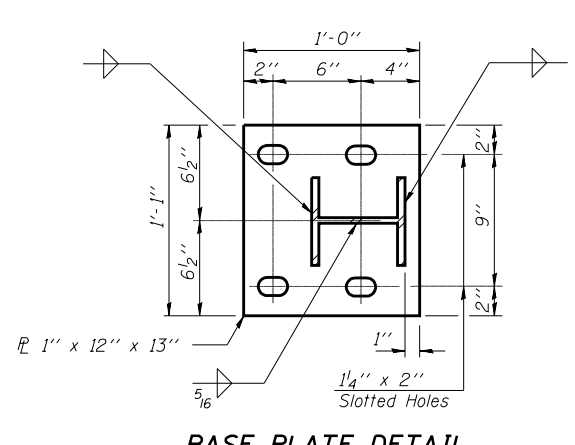
SHOULDER WIDENING SHALL BE IN ACCORDANCE WITH STATE STANDARD 630301

FILE NAME =	USER NAME = pyrzanowski	DESIGNED -	REVISED -	<b>STATE OF ILLINOIS DEPARTMENT OF TRANSPORTATION</b>	<b>CURB REMOVAL (PARTIAL) FOR TRAFFIC BARRIER TERMINAL, TYPE 1 SPECIAL</b>				F.A. RTE.	SECTION	COUNTY	TOTAL SHEETS	SHEET NO.		
Default	Plot Scale = 100.0000' / in.	DRAWN -	REVISED -		SCALE:	SHEET	OF	SHEETS	STA.	TO STA.	VAR.	2012-021 GRR	VARIOUS	22	17
	PLOT DATE = 8/8/2012	CHECKED -	REVISED -												
		DATE -	REVISED -												
											ILLINOIS FED. AID PROJECT			CONTRACT NO. 60773	

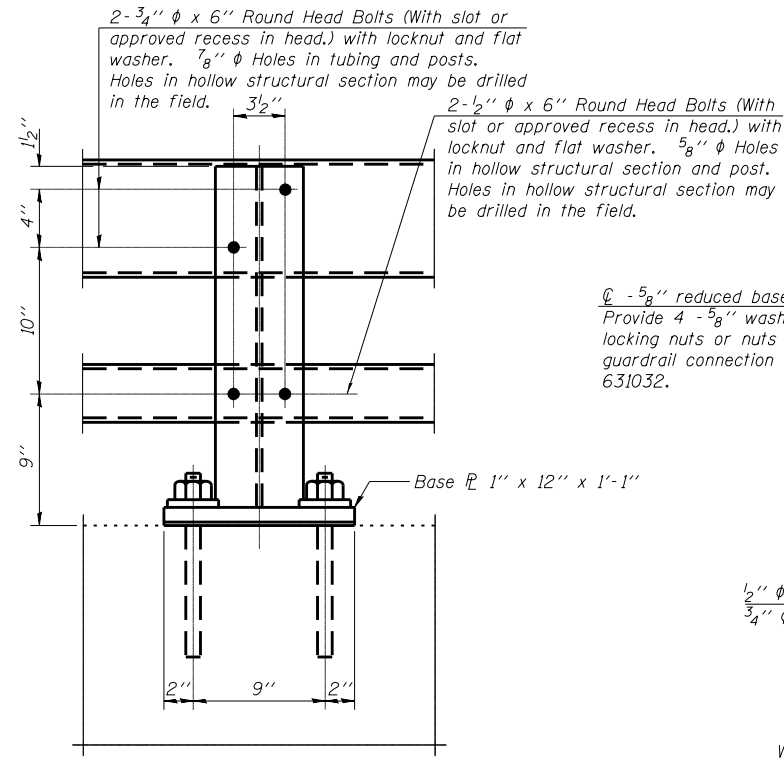
\* Cut bottom end of post to curb slope.



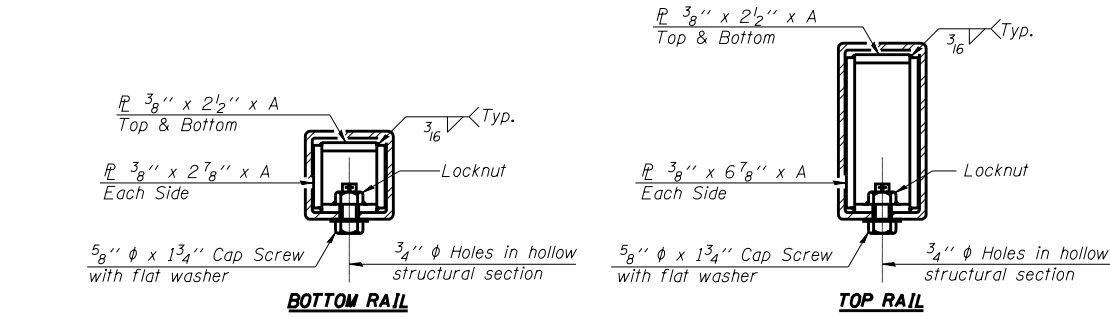
**SECTION AT RAIL POST**



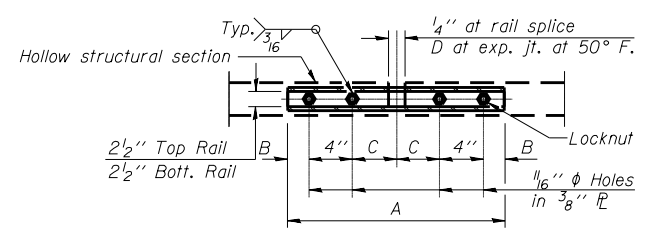
**BASE PLATE DETAIL**



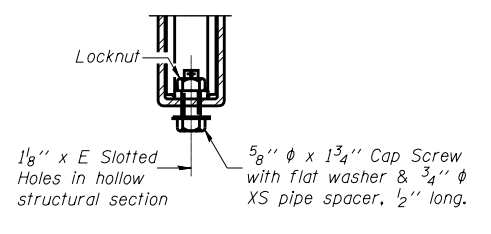
**SECTION A-A**



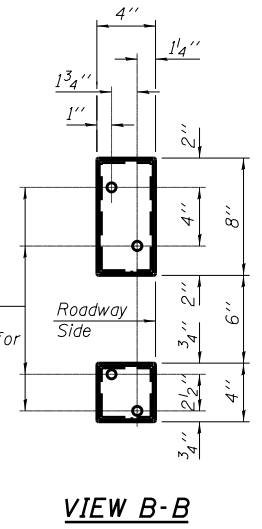
**SECTIONS AT RAIL SPLICE**



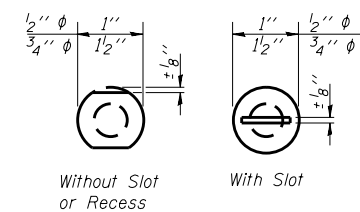
**PLAN-BOTT. SPLICE TYPICAL**



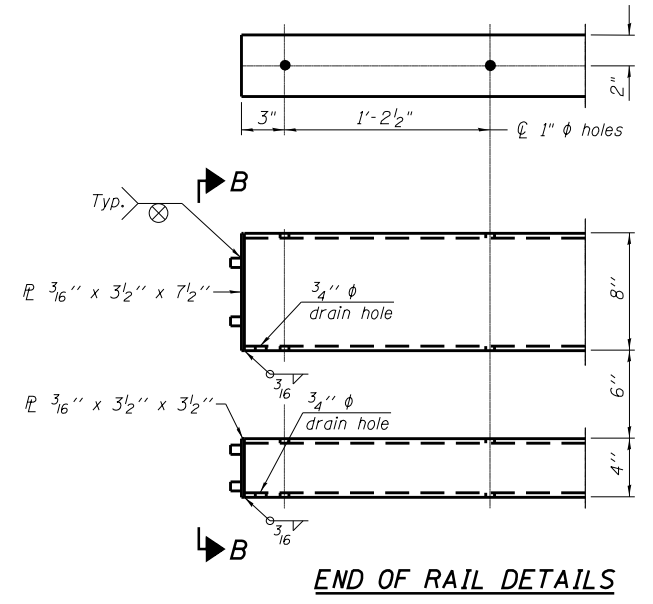
**RAIL SPLICE CONNECTION AT EXPANSION JT.**



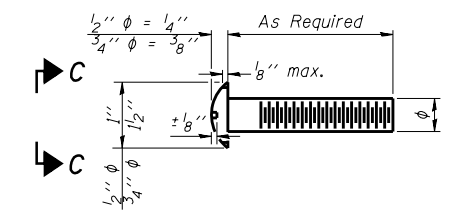
**VIEW B-B**



**VIEW C-C**



**END OF RAIL DETAILS**



**DETAIL OF 1/2" & 3/4" ROUND HEAD BOLTS**

**Notes:**  
 All field drilled holes shall be coated with an approved zinc rich paint before erection.  
 Posts shall not be located closer than 1'-3" to an existing bridge expansion joint or end of bridge.  
 Steel Bridge Rail expansion joint shall be provided between any two (2) posts which span a bridge expansion joint. Bolts located at expansion joint shall be provided with locknuts and shall be tightened only to a point that will allow railing movement.  
 Provide one 8" and two 1/16" steel shims for 25% of the posts. Shims shall be similar to base plates in size and holes.  
 All steel rail elements shall be galvanized according to Article 509.05 of the Standard Specifications.

**SPLICE DIMENSIONS**

T	D	A	B	C	E
≤ 4"	2 1/2"	1'-8"	2"	4"	2 1/2"
> 4" ≤ 6 1/2"	3 3/4"	2'-0"	2 1/2"	5 1/2"	3 1/2"
> 6 1/2" ≤ 9"	5"	2'-4"	3 1/2"	6 1/2"	9"
> 9" ≤ 13"	7"	2'-10"	4 1/2"	8 1/2"	11"
Rail Splice	1/4"	1'-8"	2"	4"	—

T = Total movement at expansion joint as shown on the design plans.

R-31

7-1-10

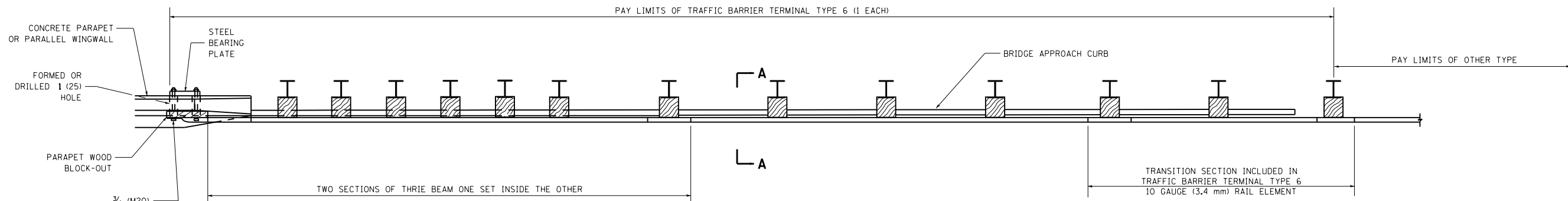
(6'-3" Maximum Post Spacing)

**STEEL RAILING, TYPE 2399  
 STRUCTURE NO.**

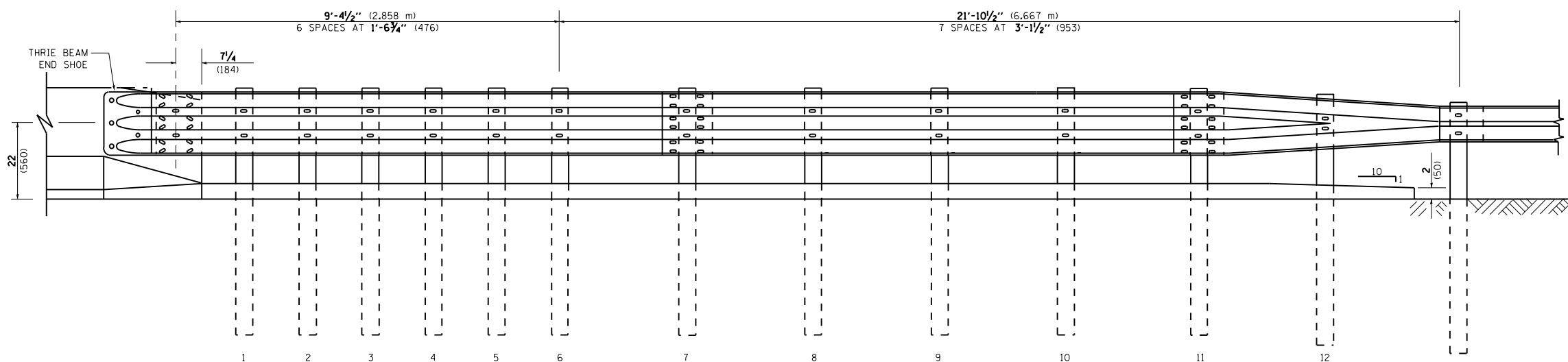
FILE NAME =	USER NAME = pyrzanowskirb	DESIGNED -	REVISED -	<b>STATE OF ILLINOIS        DEPARTMENT OF TRANSPORTATION</b>	<b>STEEL BRIDGE RAIL DETAIL</b>			F.A. RTE.	SECTION	COUNTY	TOTAL SHEETS	SHEET NO.
et:\pwwork\pwwork\pyrzanowskirb\d030698	ND142212-sht-plan.dgn	DRAWN -	REVISED -					VAR.	2012-021 GRR	VARIOUS	22	18
PLOT SCALE = 99.9998' / in.		CHECKED -	REVISED -					<b>CONTRACT NO. 60T73</b>				
PLOT DATE = 7/26/2012		DATE -	REVISED -					FED. ROAD DIST. NO.	ILLINOIS FED. AID PROJECT			
				SCALE:	SHEET NO.	OF SHEETS	STA.	TO STA.				

# PARAPET OR WINGWALL

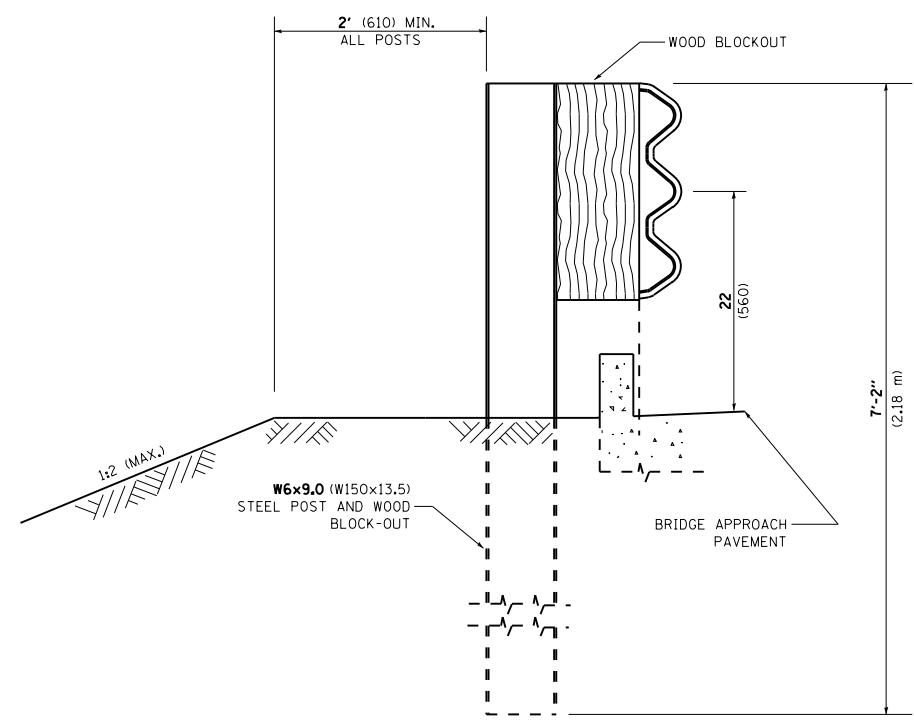
PAY LIMITS OF TRAFFIC BARRIER TERMINAL TYPE 6 (1 EACH)



PLAN



ELEVATION



SECTION A-A

## GENERAL NOTES

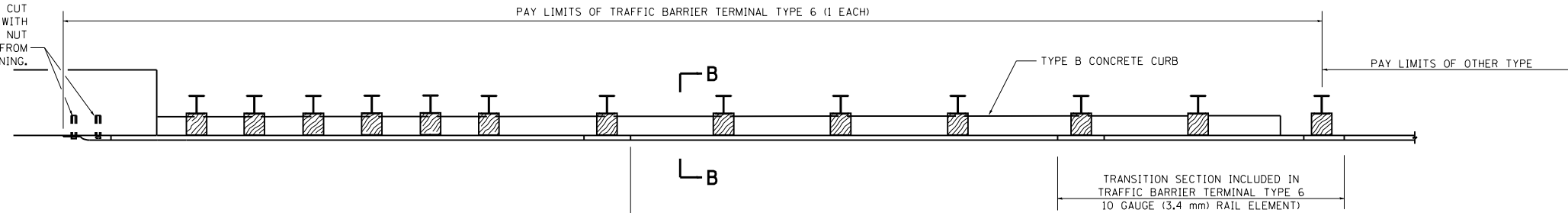
- TO BE USED WHEN CONNECTING TO EXISTING GUARD RAILING PRIOR TO THE MIDWEST GUARDRAIL SYSTEM.
- SEE STANDARD 630001 FOR DETAILS OF GUARDRAIL NOT SHOWN.
- THRIE BEAM RAIL SHALL BE BOLTED TO BLOCK-OUT AT ALL POSTS.
- SEE STANDARD 420401 FOR DETAILS OF BRIDGE APPROACH PAVEMENT.
- ALL SLOPE RATIOS ARE EXPRESSED AS UNITS OF VERTICAL DISPLACEMENT TO UNITS OF HORIZONTAL DISPLACEMENT (V:H).
- ALL DIMENSIONS ARE IN INCHES (MILLIMETERS) UNLESS OTHERWISE SHOWN.

FILE NAME =	USER NAME = pyrzanowskirb	DESIGNED -	REVISED - STATE STANDARD;	<b>STATE OF ILLINOIS DEPARTMENT OF TRANSPORTATION</b>	<b>TYPE 6 TERMINAL FOR USE WITH 21" HIGH SPBGR</b>			F.A. RTÉ.	SECTION	COUNTY	TOTAL SHEETS	SHEET NO.	
et:\pw\work\p\id\pyrzanowskirb\d030698	ND142212-sht-plan.dgn	DRAWN -	631031-05 - 02/19/2008		SCALE: NONE	SHEET NO. 1 OF 3 SHEETS	STA.	TO STA.	VAR.	2012-021 GRR	VARIOUS	22	19
	PLOT SCALE = 100.0000' / in.	CHECKED -	REVISED -					<b>BM 22</b>		<b>CONTRACT NO. 60T73</b>			
	PLOT DATE = 7/26/2012	DATE -	REVISED -		FED. ROAD DIST. NO. 1 ILLINOIS FED. AID PROJECT								

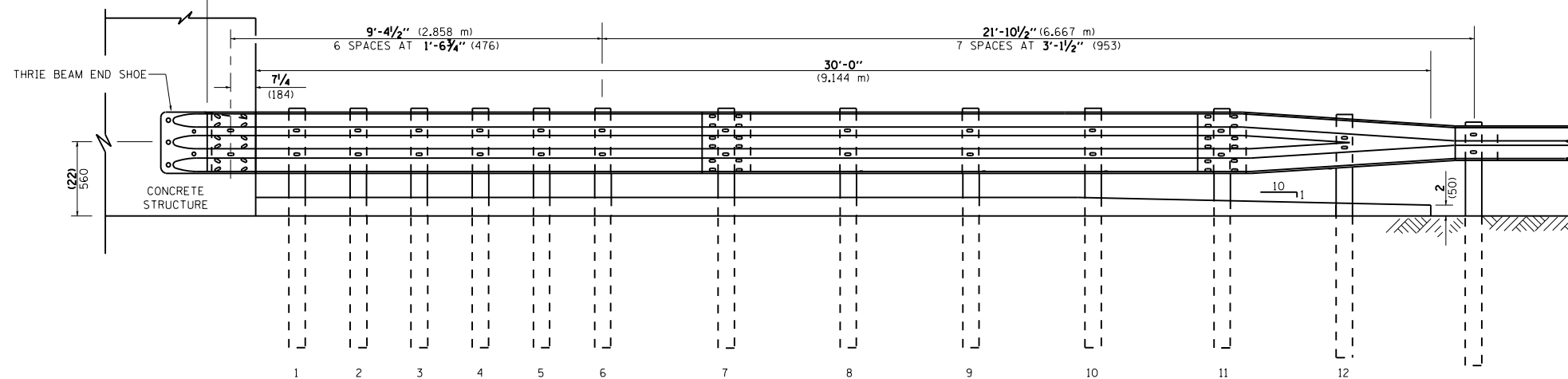
**OTHER CONCRETE STRUCTURE**

5 EPOXY GROUTED  $\frac{3}{4}$ " (M20) ANCHOR BOLTS WITH STANDARD WASHERS. AFTER TIGHTENING, CUT THE ANCHOR BOLTS FLUSH WITH NUTS, AND DAMAGE THE NUT TO PREVENT IT FROM LOOSENING.

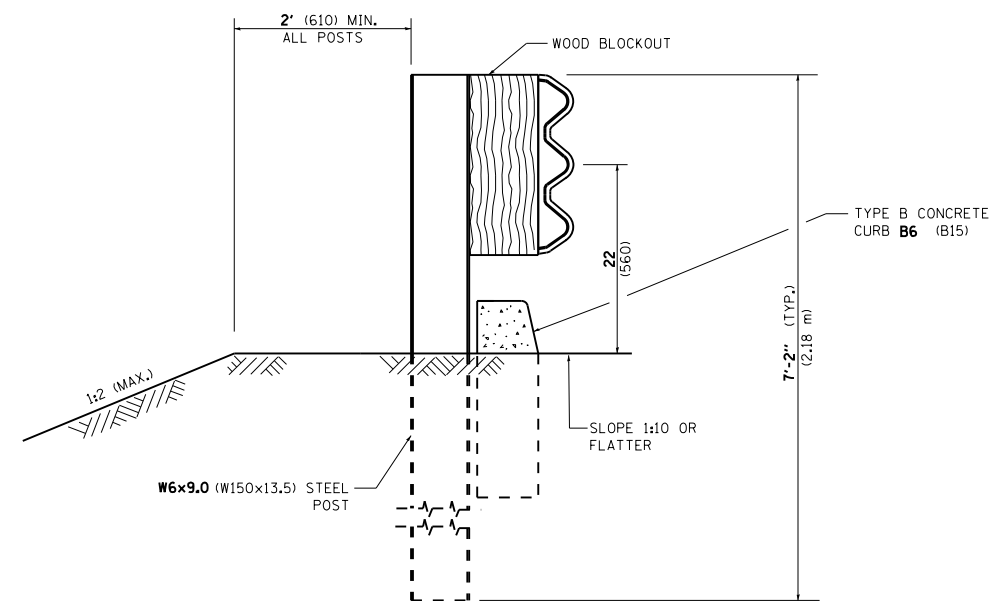
PAY LIMITS OF TRAFFIC BARRIER TERMINAL TYPE 6 (1 EACH)



**PLAN**



**ELEVATION**



**SECTION B-B**

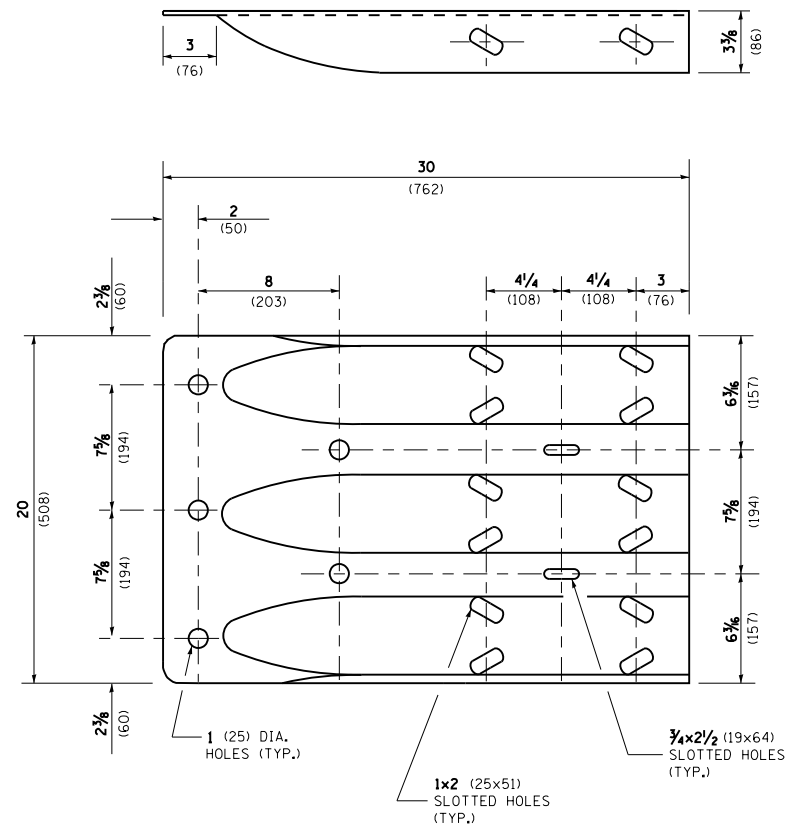
FILE NAME =	USER NAME = pyzranowskirb	DESIGNED -	REVISED - STATE STANDARD:
ct:\pw\work\p1dot\pyzranowskirb\d030698	ND142212-sht-plan.dgn	DRAWN -	631031-05 - 02/19/2008
	PLOT SCALE = 100.0000' / 1"	CHECKED -	REVISED -
	PLOT DATE = 7/26/2012	DATE -	REVISED -

**STATE OF ILLINOIS  
DEPARTMENT OF TRANSPORTATION**

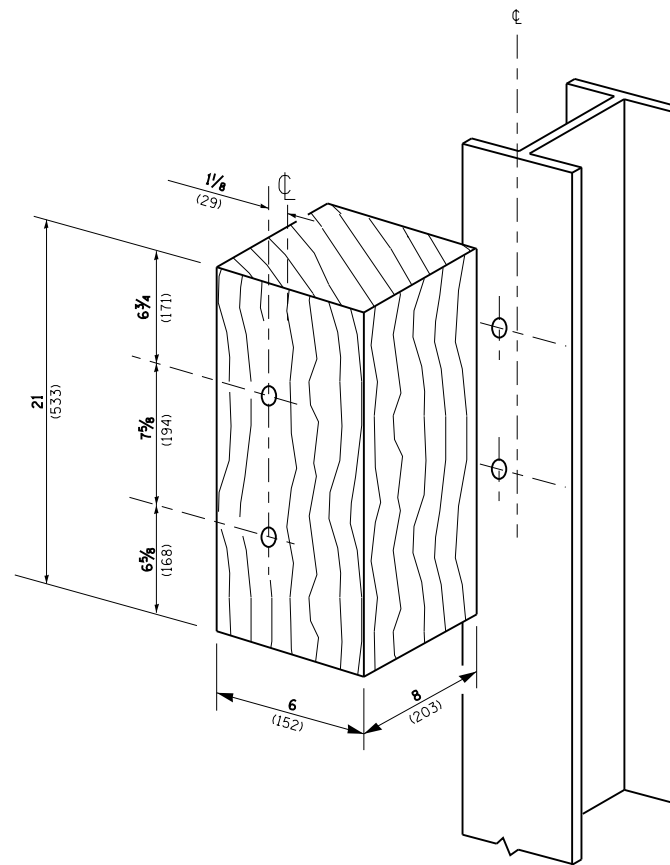
**TYPE 6 TERMINAL  
FOR USE WITH 21" HIGH SPBGR**

SCALE: NONE SHEET NO. 2 OF 3 SHEETS STA. TO STA.

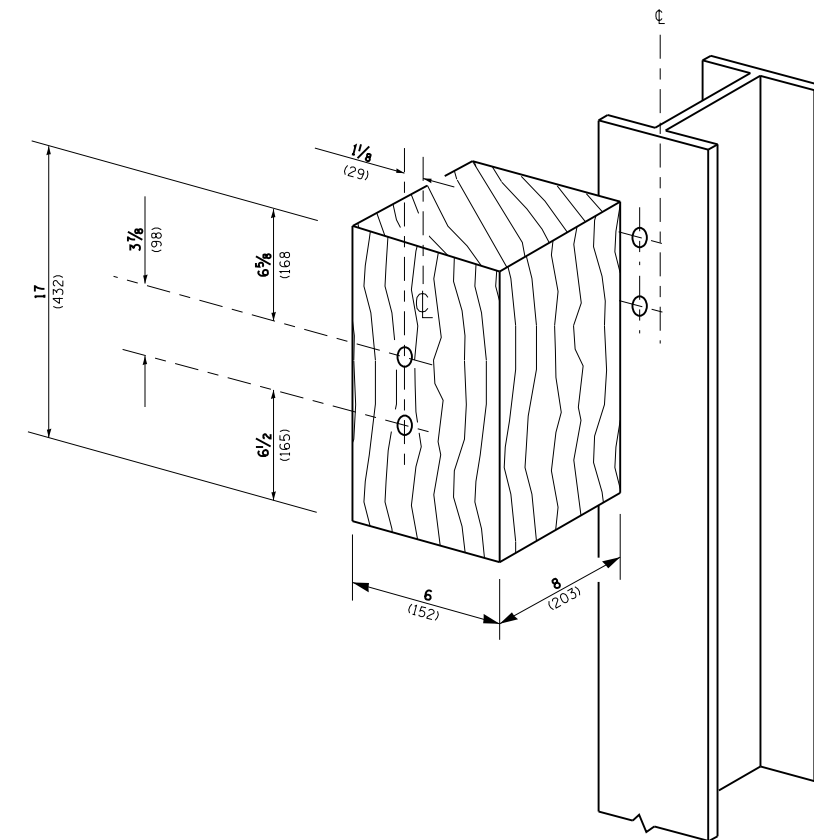
F.A. RTE.	SECTION	COUNTY	TOTAL SHEETS	SHEET NO.
VAR.	2012-021 GRR	VARIOUS	22	20
<b>BM 22</b>		<b>CONTRACT NO. 60T73</b>		
FED. ROAD DIST. NO. 1 ILLINOIS FED. AID PROJECT				



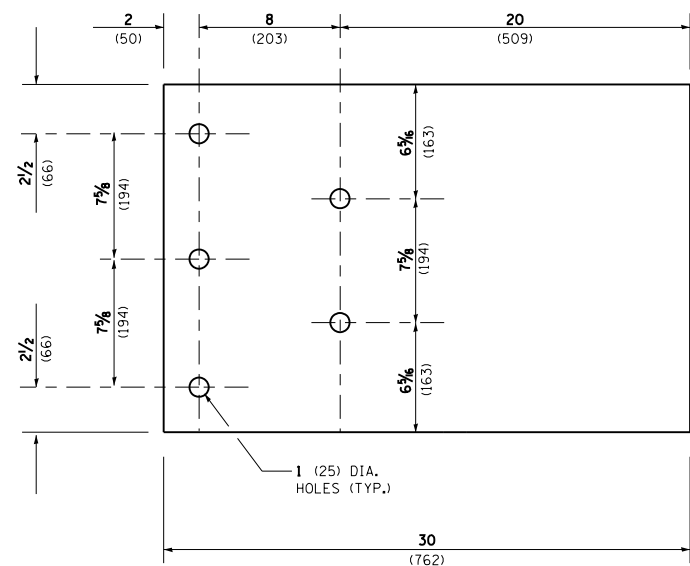
**THRIE BEAM END SHOE DETAIL**



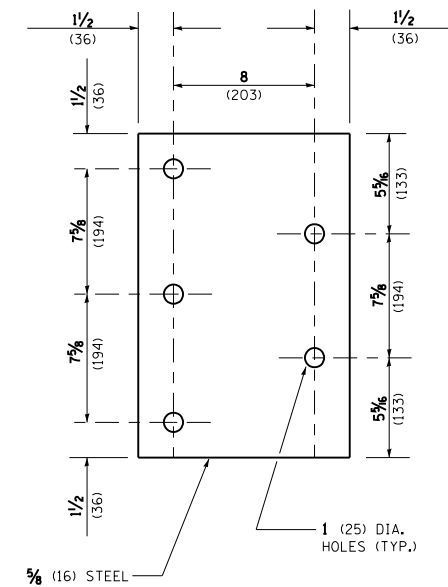
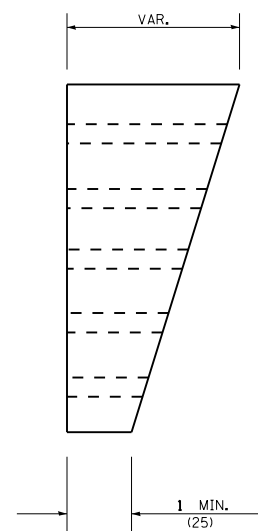
**POSTS 1-11 WOOD BLOCKOUT DETAIL**



**POST 12 WOOD BLOCKOUT DETAIL**



**PARAPET WOOD BLOCK-OUT DETAIL**



**PARAPET STEEL BEARING PLATE DETAIL**

(5 EACH INDIVIDUAL 5x5x1/2 (125x125x16) STEEL PLATES WITH CENTERED 1 (25) HOLES MAY BE SUBSTITUTED FOR THE PLATE SHOWN.)

FILE NAME =	USER NAME = pyrzanowskirb	DESIGNED -	REVISED - STATE STANDARD;
et:\pw_work\p\dot\pyrzanowskirb\d030698	ND142212-sht-plan.dgn	DRAWN -	631031-05 - 02/19/2008
	PLOT SCALE = 100.0000' / 1in.	CHECKED -	REVISED -
	PLOT DATE = 7/26/2012	DATE -	REVISED -

**STATE OF ILLINOIS  
DEPARTMENT OF TRANSPORTATION**

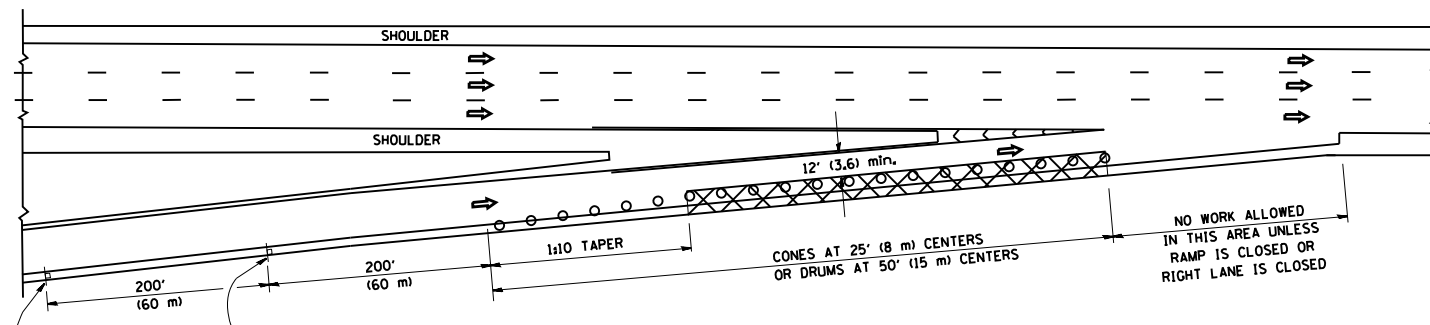
**TYPE 6 TERMINAL  
FOR USE WITH 21" HIGH SPBGR**

SCALE: NONE SHEET NO. 3 OF 3 SHEETS STA. TO STA.

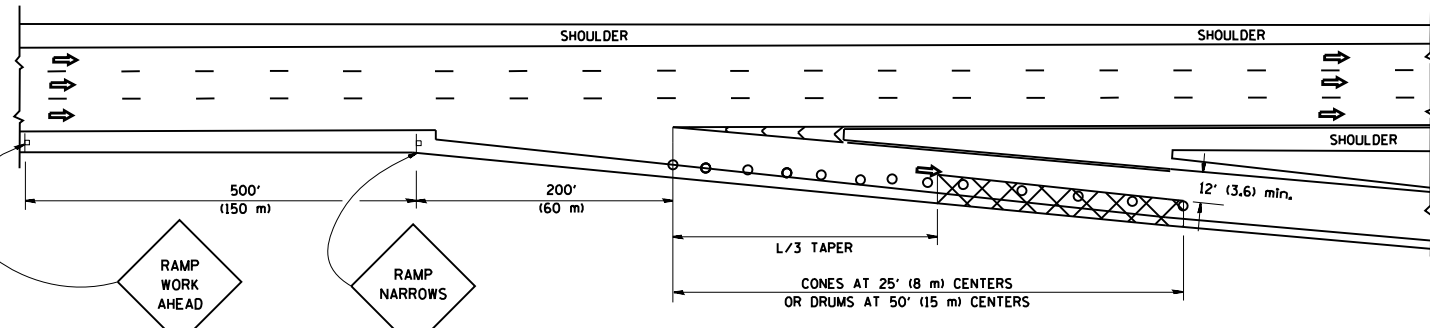
F.A. RTE.	SECTION	COUNTY	TOTAL SHEETS	SHEET NO.
VAR.	2012-021 GRR	VARIOUS	22	21
BM 22			CONTRACT NO. 60T73	
FED. ROAD DIST. NO. 1 ILLINOIS FED. AID PROJECT				

**PARTIAL RAMP CLOSURE DETAILS**

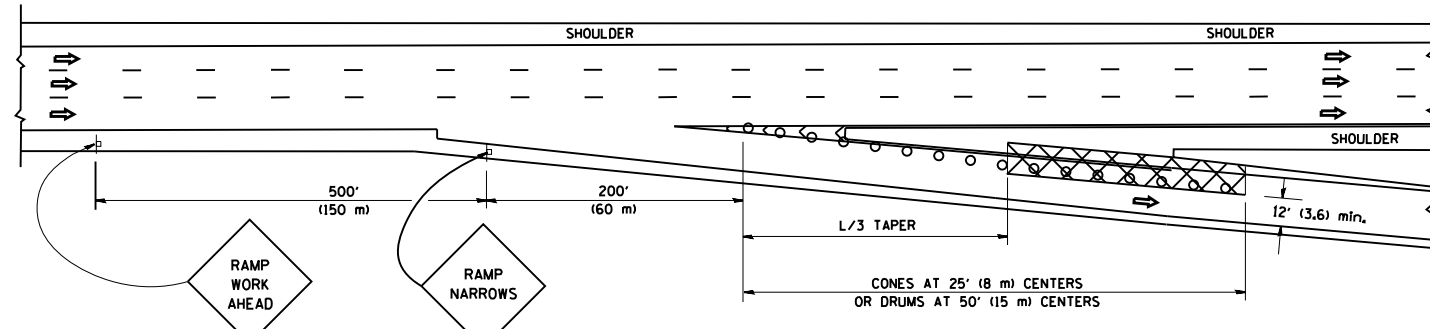
**SHOULDER CLOSURE DETAILS**



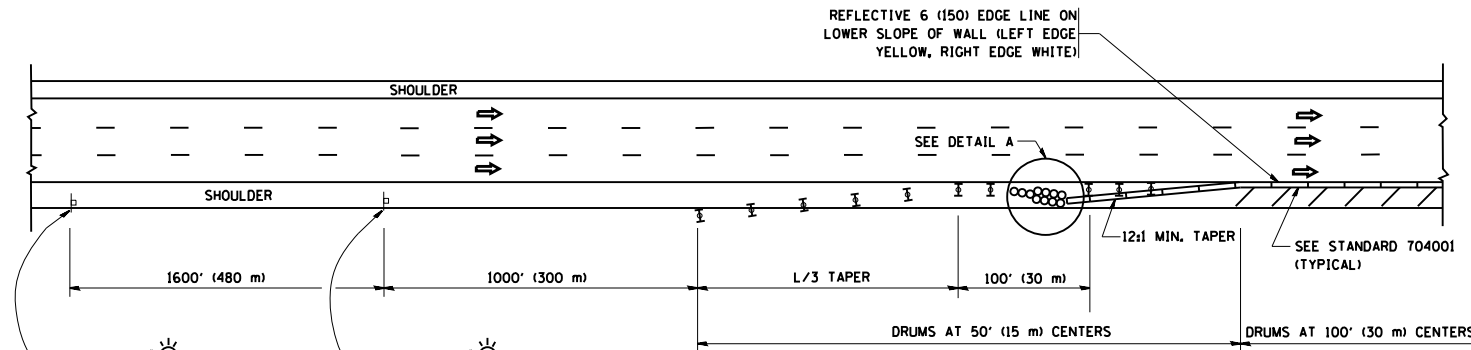
**TYPICAL ENTRANCE RAMP**



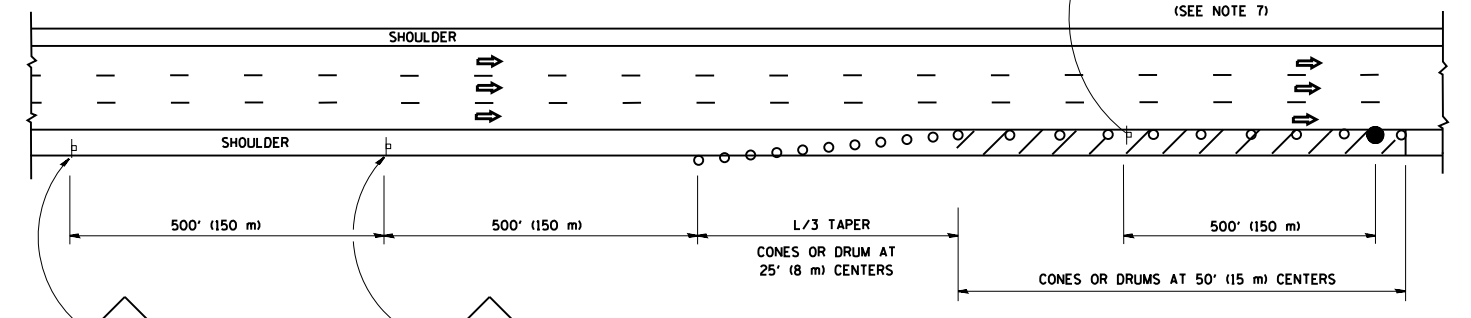
**TYPICAL EXIT RAMP**



**TYPICAL EXIT RAMP**



**PERMANENT SHOULDER CLOSURE**



**DAYTIME SHOULDER CLOSURE**

**SYMBOLS**

- ACTIVE WORK AREA
- SIGN ON PORTABLE OR PERMANENT SUPPORT
- FLAGGER WITH CONTROL SIGN
- TYPE II BARRICADE, DRUM OR VERTICAL BARRICADE WITH STEADY BURN MONO-DIRECTIONAL LIGHT
- CONE, DRUM OR BARRICADE

**GENERAL NOTES**

1. THE "L" DISTANCE EQUALS:
 

SPEED LIMIT	FORMULAS
45 mph (80 km/h) OR GREATER:	METRIC    ENGLISH
	$L=0.65(WXS)$ $L=(WXS)$
	$W =$ WIDTH OF OFFSET IN FEET (METERS)
	$S =$ NORMAL POSTED SPEED MPH (KM/H)
2. PLASTIC DRUMS WITH HIGH PERFORMANCE REFLECTIVE SHEETING AND STEADY BURNING LIGHTS ARE REQUIRED FOR ALL NIGHTTIME CLOSURES.
3. ALL SIGNS SHALL BE POST MOUNTED IF THE CLOSURE TIME EXCEEDS FOUR DAYS.
4. FLASHING LIGHTS SHALL BE USED DURING THE HOURS OF DARKNESS AND SHALL BE INSTALLED ABOVE THE FIRST TWO SETS OF SIGNS.

5. THE IMPACT ATTENUATOR, TEMPORARY IS NOT REQUIRED WHEN THE TEMPORARY CONCRETE BARRIER WALL IS PROTECTED BY OR IS TIED INTO THE EXISTING GUARDRAIL. IF OFFSET IS LESS THAN 5 FEET USE NARROW USE TYPE DEVICE TO MEET NCHRP350.
6. AUTHORIZATION FROM THE DISTRICT'S BUREAU OF TRAFFIC IS REQUIRED FOR ALL FREEWAY CLOSURES.
7. THE FLAGGER AND FLAGGER SIGN ARE REQUIRED AT THE ABOVE WORK SITES WHEN:
  - a. FOUR OR MORE WORK VEHICLES ENTER THE TRAFFIC LANES IN A ONE HOUR PERIOD.
  - b. THE WORK ACTIVITY REQUIRES FREQUENT ENCROACHMENT INTO THE LANE OPEN TO TRAFFIC.
 THE FLAGGER SHALL BE STATIONED APPROXIMATELY 100' (30 m) TO 200' (60 m) IN ADVANCE OF THE WORKERS.

**ARRAY DESIGN PER MANUFACTURER TO BE NCHRP 350 COMPLIANT.**

**DETAIL "A"  
IMPACT ATTENUATOR, TEMPORARY  
(SEE NOTE 5)**

ALL DIMENSIONS ARE IN INCHES (MILLIMETERS) UNLESS OTHERWISE SHOWN.

FILE NAME =	USER NAME = pyrzanowskirb	DESIGNED -	REVISED - 04-03	<b>STATE OF ILLINOIS DEPARTMENT OF TRANSPORTATION</b>	<b>TRAFFIC CONTROL DETAILS FOR FREEWAY SHOULDER CLOSURES AND PARTIAL RAMP CLOSURES</b>			F.A. RTE.	SECTION	COUNTY	TOTAL SHEETS	SHEET NO.	
es:\pw\work\p\dot\pyrzanowskirb\d030698\ND142212-sht-plan.dgn	ND142212-sht-plan.dgn	DRAWN - D.W.S.	REVISED - J.A.F. 12-06		SCALE: NONE	SHEET NO. 1 OF 1 SHEETS	STA.	TO STA.	VAR.	2012-021 GRR	VARIOUS	22	22
PLOT SCALE = 100.0000' / 1"		CHECKED -	REVISED - S.P.B. 01-07						TC-17				
PLOT DATE = 7/26/2012		DATE - 11-96	REVISED - S.P.B. 12-09										
								CONTRACT NO. 60T73		FED. ROAD DIST. NO. 1 ILLINOIS FED. AID PROJECT			