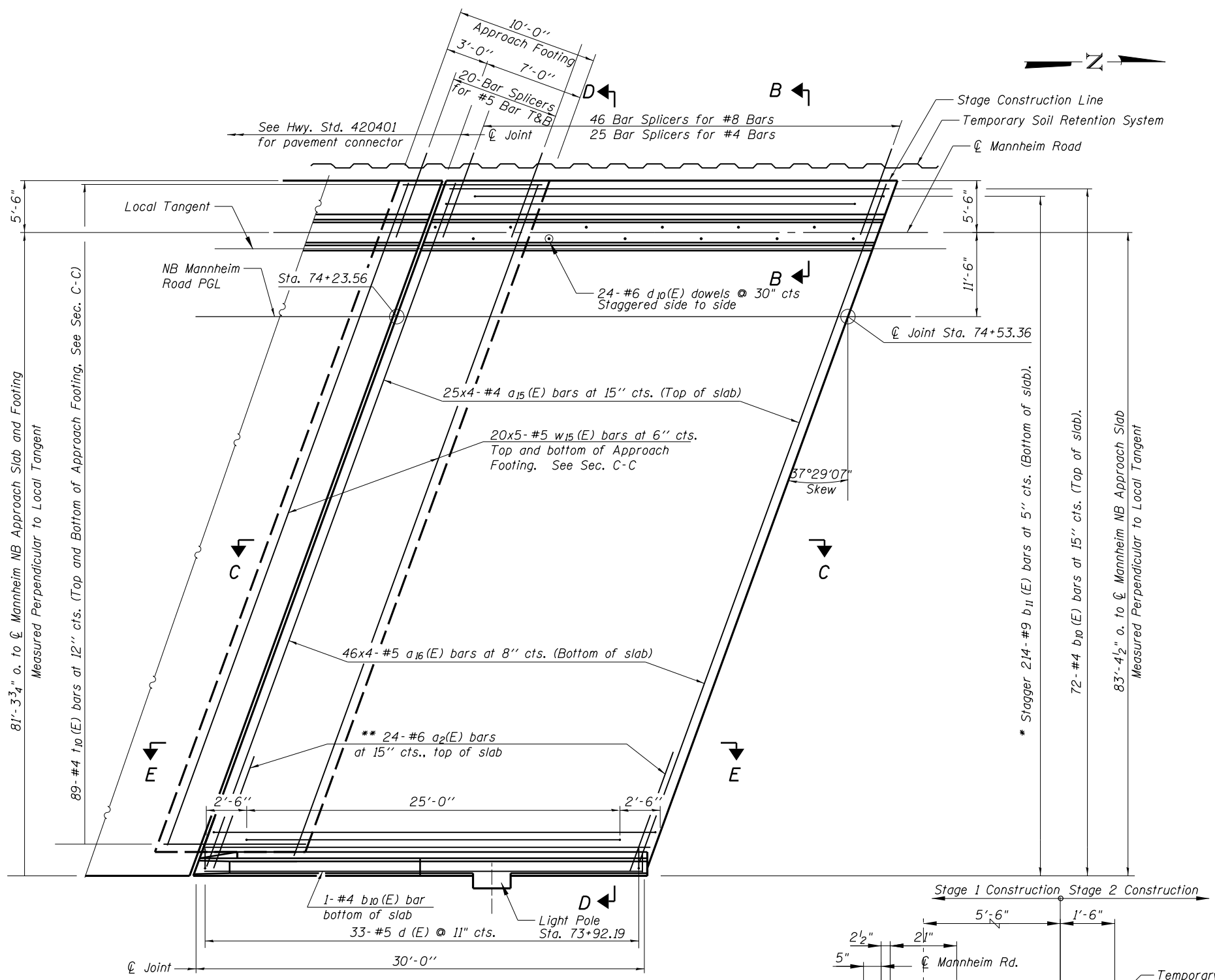


Notes:
See sheet S-15 of S-26 for Sections C-C & D-D and View E-E.
a₁₅(E) and a₁₆(E) bar spacings measured along ϕ Rdwy.



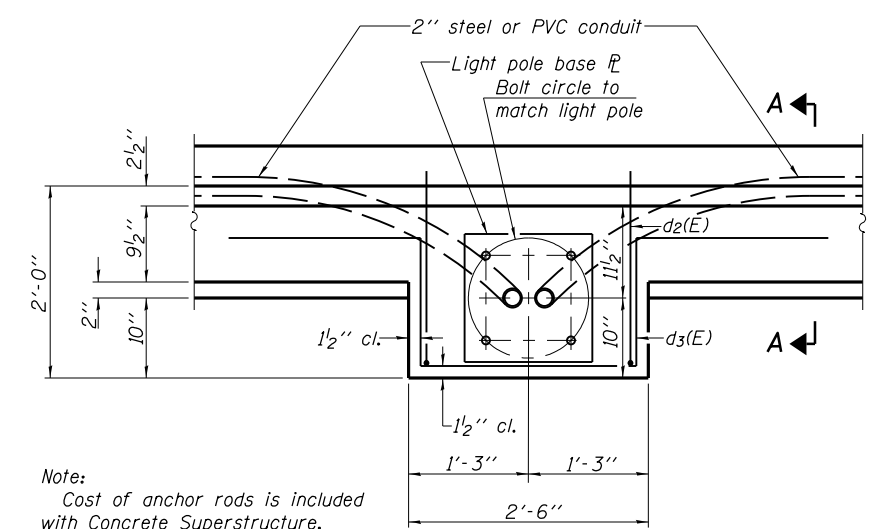
N:\ROSEMONT\11000\CADD\Sheets\Fabrication CADD\Sheets\16-0167943-0168037-014_NBSAAppr_slab.dgn
 CHRISTOPHER B. BURKE ENGINEERING, LTD.
 8575 W. Higgins Road, Suite 600
 Rosemont, Illinois 60018
 (847) 924-8900

PLAN

* Tilt #9 b₁₁(E) bars as required to maintain clearance.
** Space between a(E) bars, typ. each parapet.

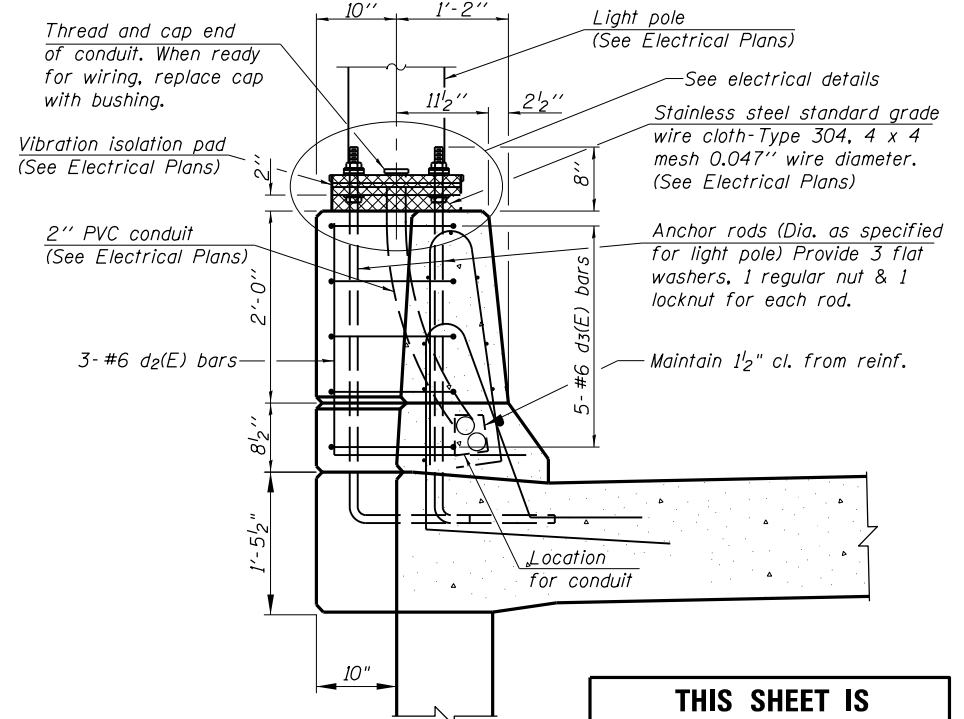
MINIMUM BAR LAP

- #4 bar = 2'-3"
- #5 bar = 3'-3"
- #8 bar = 5'-2"



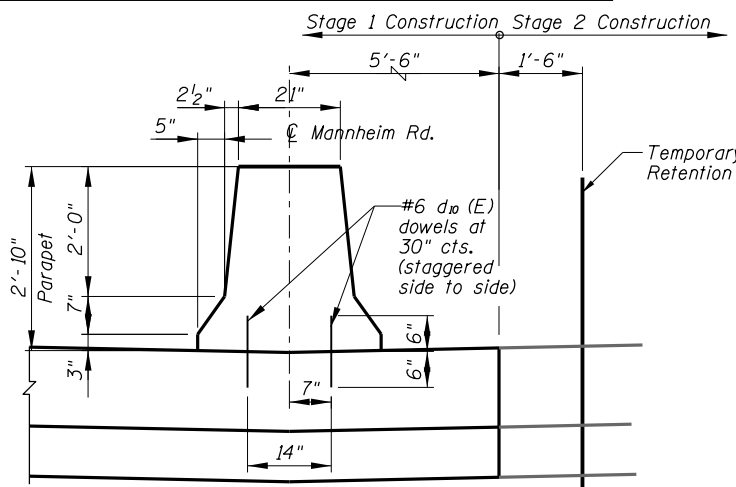
Note:
Cost of anchor rods is included with Concrete Superstructure.

PLAN

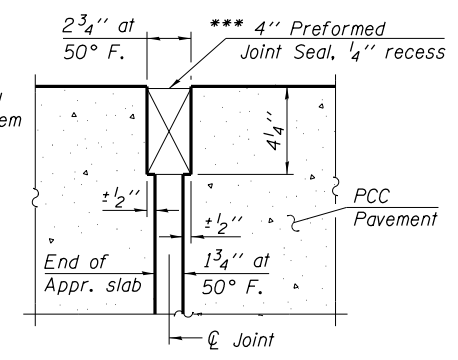


THIS SHEET IS FOR INFORMATION ONLY

SECTION A-A

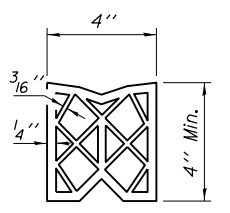


VIEW B-B



RIGID PAVEMENT DETAIL A

*** Cost included with Concrete Superstructure.



PREFORMED JOINT SEAL

USER NAME =	DESIGNED - MM	REVISED
PLLOT SCALE =	CHECKED - JMB	REVISED
PLLOT DATE =	DRAWN - PDR	REVISED
	CHECKED - MM	REVISED

**STATE OF ILLINOIS
DEPARTMENT OF TRANSPORTATION**

**BRIDGE SOUTH APPROACH SLAB DETAILS
NB MANNHEIM ROAD BRIDGE - STRUCTURE NO. 016-7943**

F.A. RTE.	SECTION	COUNTY	TOTAL SHEETS	SHEET NO.
330	0105-F	COOK	55	16
CONTRACT NO. 60V68				

SHEET NO.S-14 OF S-26 SHEETS

ILLINOIS FED. AID PROJECT