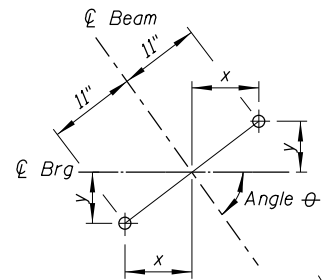
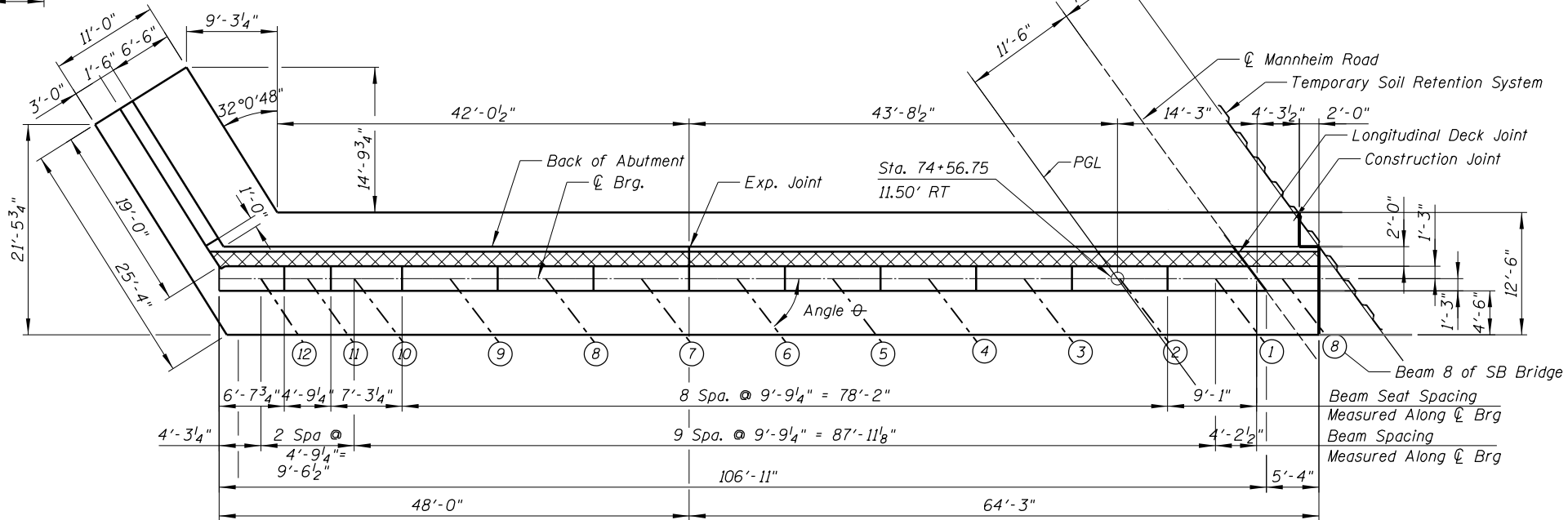


ANCHOR BOLT LOCATION



Beam	x	y
1-10	8 3/4"	6 5/8"
11	9"	6 3/8"
12	9 1/8"	6"



PLAN

BEAM STEPS

Beam	Step Height
1-2	3 3/8"
2-3	2 3/4"
3-4	2 5/8"
4-5	2 3/4"
5-6	2 3/4"
6-7	2 3/4"
7-8	2 3/4"
8-9	2 3/4"
9-10	2 3/4"
10-11	3/4"
11-12	-2 1/8"

NOTES:

1. Bars indicated thus 1x2 - #5 etc. indicates 1 line of bars with 2 lengths per line.
2. Space reinforcement in cap to miss anchor bolts.
3. Four steps monolithically with cap.
4. Hatched area to be poured after superstructure false work has been removed. Quality of concrete included in "Concrete Superstructure".

ANGLE TABLE

Beam	Angle θ *
1	52°-30'-53"
2	52°-30'-53"
3	52°-30'-53"
4	52°-30'-53"
5	52°-30'-53"
6	52°-30'-53"
7	52°-30'-53"
8	52°-30'-53"
9	52°-30'-53"
10	52°-30'-53"
11	54°-30'-36"
12	56°-36'-35"

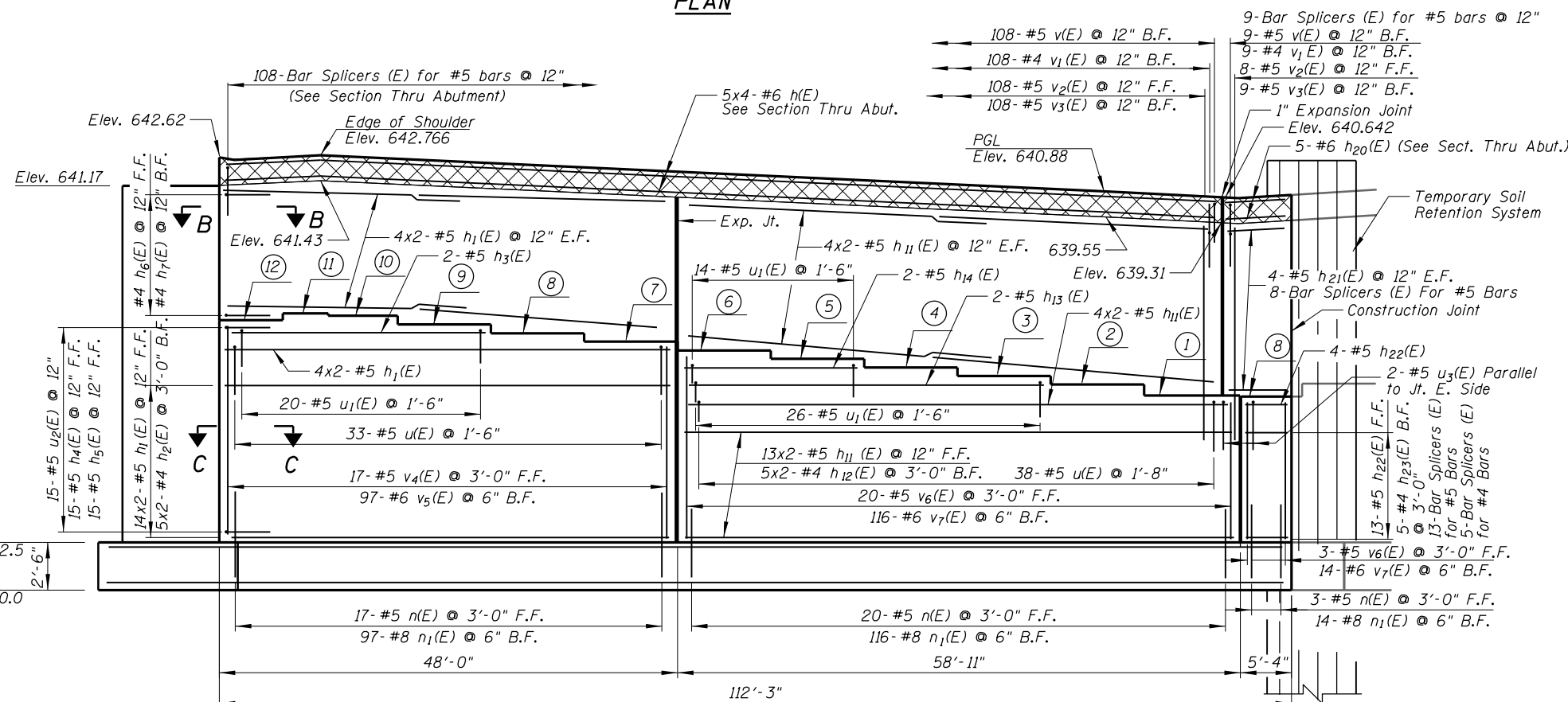
* Measured Relative to ϕ Bearing

BEAM SEAT ELEVATION

Beam	Elevation
1	635.43
2	635.71
3	635.94
4	636.16
5	636.39
6	636.61
7	636.84
8	637.06
9	637.29
10	637.52
11	637.58
12	637.40

MIN. BAR LAP

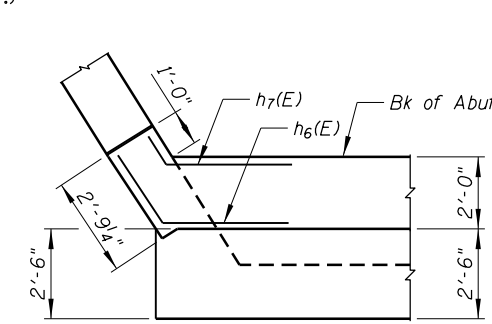
Bar	Bar Lap
#4	2'-3"
#5	2'-10"



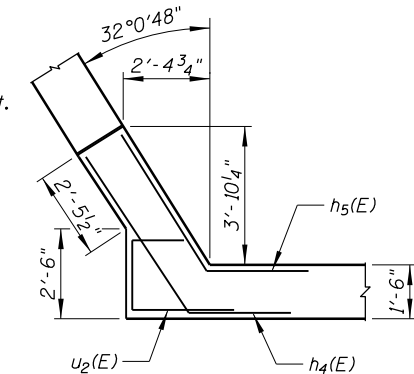
ELEVATION

Looking South

Maximum Applied Service Bearing Pressure (Q_{max}) = 5.8 ksf



SECTION B-B



SECTION C-C

LEGEND:

- F.F. Front Face
- B.F. Back face
- E.F. Each face

THIS SHEET IS FOR INFORMATION ONLY

N:\ROSEMONT\11000\CADD\Sheets\22-0167943-0168037-020_Sabutment.dgn
 CHRISTOPHER B. BURKE ENGINEERING, LTD.
 8575 W. Higgins Road, Suite 600
 Rosemont, Illinois 60018
 (847) 924-6900

USER NAME =	DESIGNED - MM	REVISED
PLOT SCALE =	CHECKED - JMB	REVISED
PLOT DATE	DRAWN - PDR	REVISED
	CHECKED - MM	REVISED

**STATE OF ILLINOIS
DEPARTMENT OF TRANSPORTATION**

**SOUTH ABUTMENT - PLAN AND ELEVATION
NB MANNHEIM ROAD BRIDGE - STRUCTURE NO. 016-7943**

SHEET NO.5-20 OF 5-26 SHEETS

F.A. RTE.	SECTION	COUNTY	TOTAL SHEETS	SHEET NO.
330	0105-F	COOK	55	22
CONTRACT NO. 60V68			ILLINOIS FED. AID PROJECT	