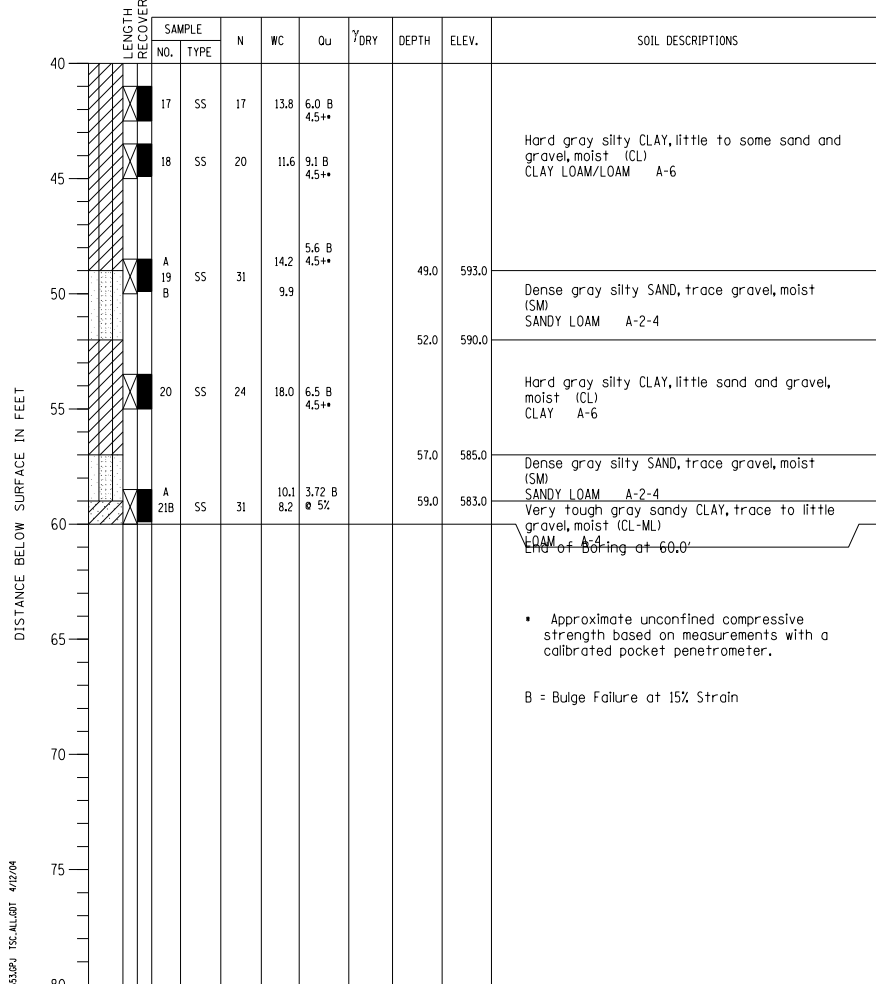


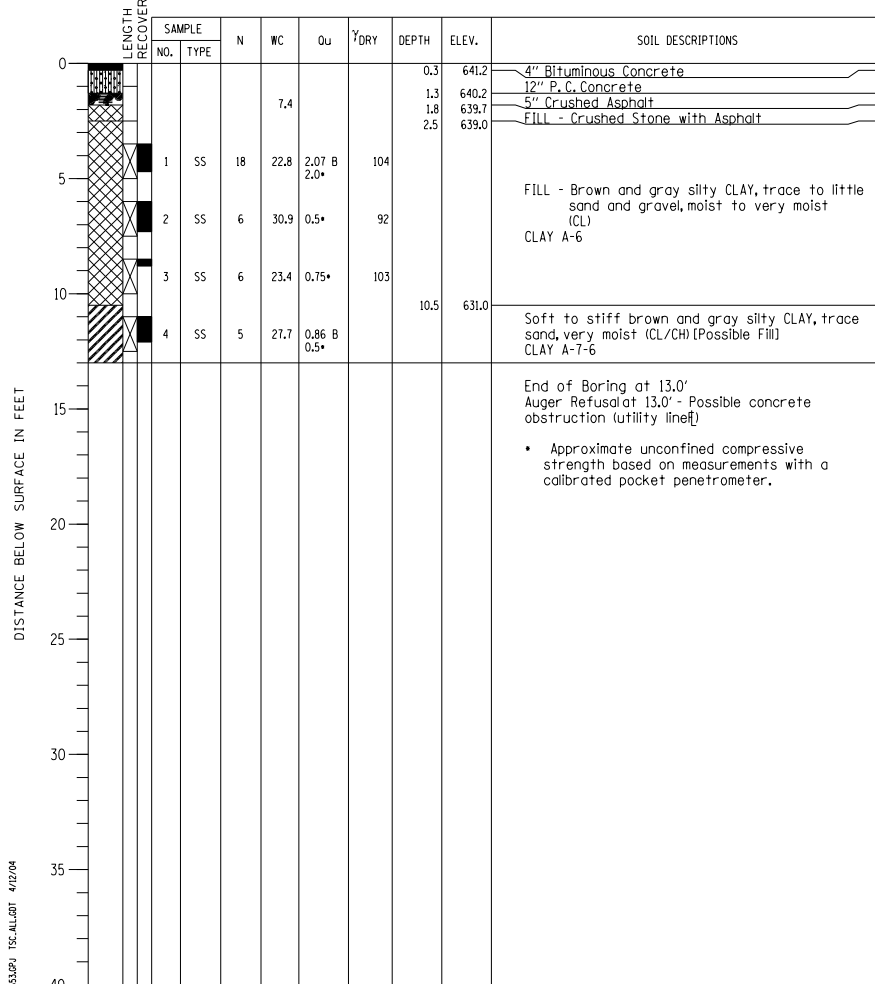
PROJECT Balmoral Avenue Extension - Phase II, Rosemont, Illinois
 CLIENT Christopher B. Burke Engineering, Ltd., Rosemont, Illinois
 BORING 20 DATE STARTED 10-1-02 DATE COMPLETED 10-1-02 JOB L-52,653
 ELEVATIONS WATER LEVEL OBSERVATIONS
 GROUND SURFACE 642.0 WHILE DRILLING Dry to 10.0'
 END OF BORING 582.0 AT END OF BORING Rotary Wash
 24 HOURS



DRILL RIG NO. 275
 Division lines between deposits represent approximate boundaries between soil types; in-situ, the transition may be gradual.
 Page 2 of 2

BORING NO. 20
 Station 75+48.25
 Offset 34.94' RT

PROJECT Balmoral Avenue Extension - Phase II, Rosemont, Illinois
 CLIENT Christopher B. Burke Engineering, Ltd., Rosemont, Illinois
 BORING 21 DATE STARTED 4-11-02 DATE COMPLETED 4-11-02 JOB L-52,653
 ELEVATIONS WATER LEVEL OBSERVATIONS
 GROUND SURFACE 641.5 WHILE DRILLING Dry
 END OF BORING 628.5 AT END OF BORING Grouted
 24 HOURS



DRILL RIG NO. 217
 Division lines between deposits represent approximate boundaries between soil types; in-situ, the transition may be gradual.

BORING NO. 21
 Station 74+41.51
 Offset 89.91' RT

N:\ROSEMONT\11000\CADD\Sheets\Fabrication_CADD_Sheets\28-016\7943-016\0637-026_Boring.dgn

THIS SHEET IS FOR INFORMATION ONLY

 CHRISTOPHER B. BURKE ENGINEERING, LTD. 8575 W. Higgins Road, Suite 600 Rosemont, Illinois 60018 (847) 924-8900	USER NAME =	DESIGNED - MM	REVISED	STATE OF ILLINOIS DEPARTMENT OF TRANSPORTATION	BORING LOGS NB MANNHEIM ROAD BRIDGE - STRUCTURE NO. 016-7943	F.A. RTE. =	SECTION	COUNTY	TOTAL SHEETS	SHEET NO.
	PLOT SCALE =	CHECKED - JMB	REVISED			330	0105-F	COOK	55	28
PLOT DATE =	DRAWN - PDR	REVISED		SHEET NO. 5-26 OF 5-26 SHEETS		CONTRACT NO. 60V68				
	CHECKED - MM	REVISED				ILLINOIS FED. AID PROJECT				