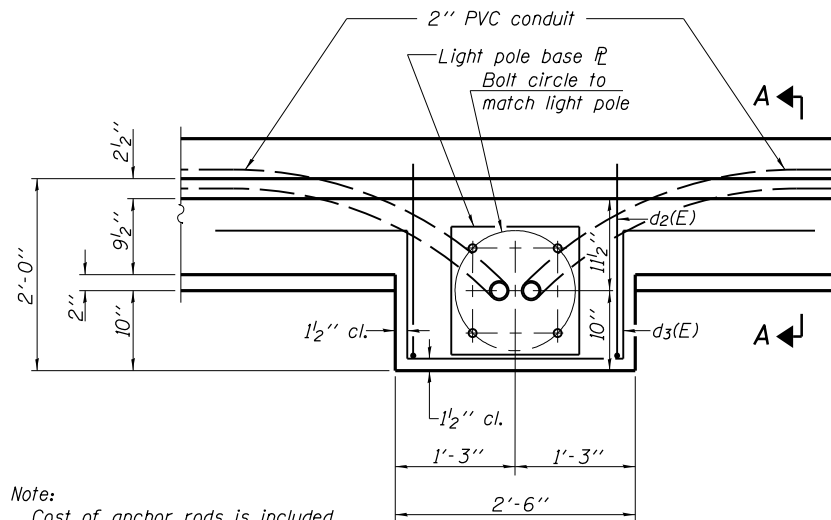
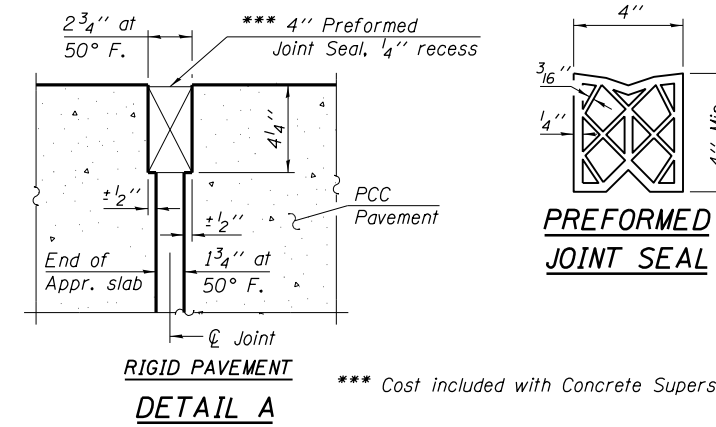
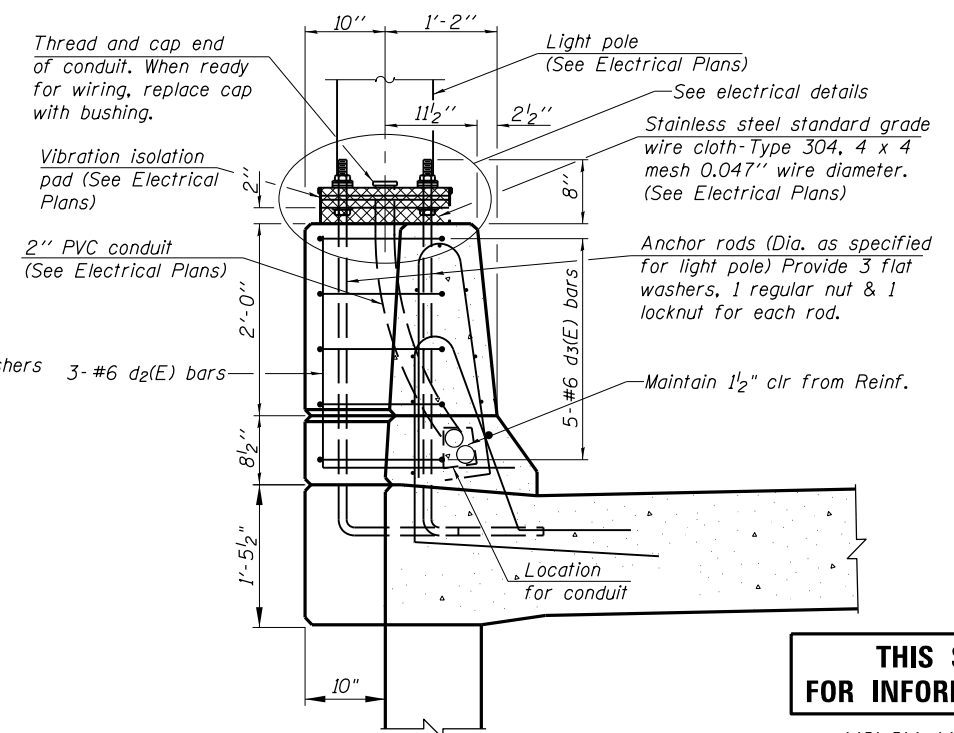


Notes:
 See sheet S-16 of S-27 for Sections C-C & D-D and View E-E.
 $a_{20}(E)$ and $a_{21}(E)$ bar spacings measured along \varnothing Rdwy.

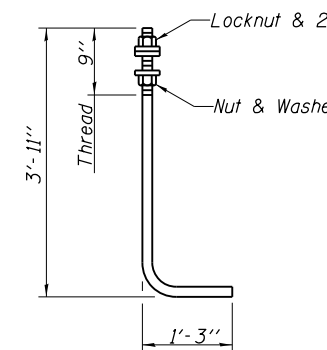


Note:
 Cost of anchor rods is included with Concrete Superstructure.

PLAN

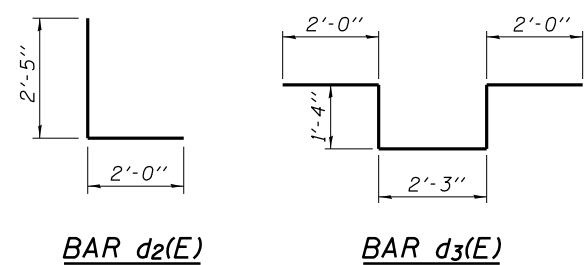


SECTION A-A



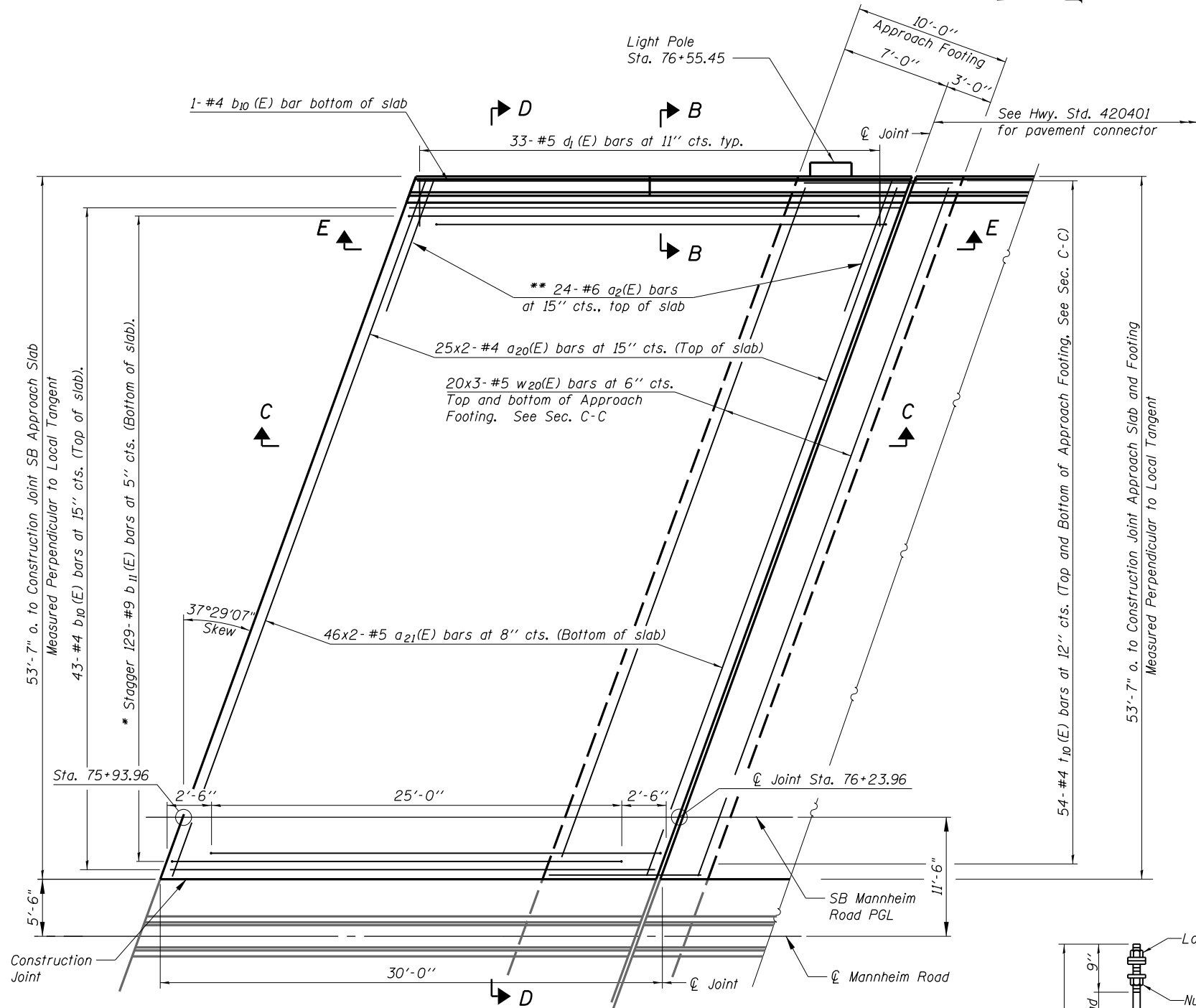
ANCHOR ROD

Diameter as specified for light poles.
 (ASTM F 1554 Grade 105) Full length
 Hot Dipped Galvanized.



BAR $d_2(E)$

BAR $d_3(E)$



PLAN

* Tilt #9 $b_{11}(E)$ bars as required to maintain clearance.
 ** Space between $a_{20}(E)$ bars, typ. each parapet.

THIS SHEET IS FOR INFORMATION ONLY
MINIMUM BAR LAP
 #4 bar = 2'-3"
 #5 bar = 3'-3"
 #8 bar = 5'-2"

N:\ROSEMONT\11000\CADD\Sheets\Fabrication CADD\Sheets\13-0167942-0168037-015-Appr-slab.dgn
 CHRISTOPHER B. BURKE ENGINEERING, LTD.
 8575 W. Higgins Road, Suite 600
 Rosemont, Illinois 60018
 (847) 924-8900

USER NAME =	DESIGNED - MM	REVISED
CHECKED - JMB	REVISOR	
PLOT SCALE =	DRAWN - PDR	REVISOR
PLOT DATE =	CHECKED - MM	REVISOR

STATE OF ILLINOIS
DEPARTMENT OF TRANSPORTATION

BRIDGE N. APPROACH SLAB DETAILS
SB MANNHEIM ROAD BRIDGE - STRUCTURE NO. 016-7942

F.A. RTE.	SECTION	COUNTY	TOTAL SHEETS	SHEET NO.
330	0105-F	COOK	55	43
CONTRACT NO. 60V68				

SHEET NO. S-15 OF S-27 SHEETS

ILLINOIS FED. AID PROJECT