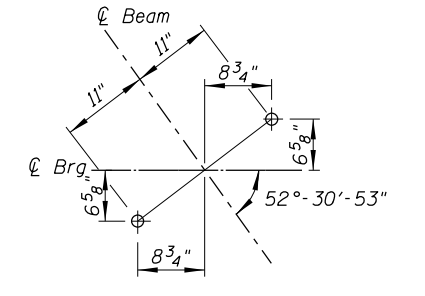
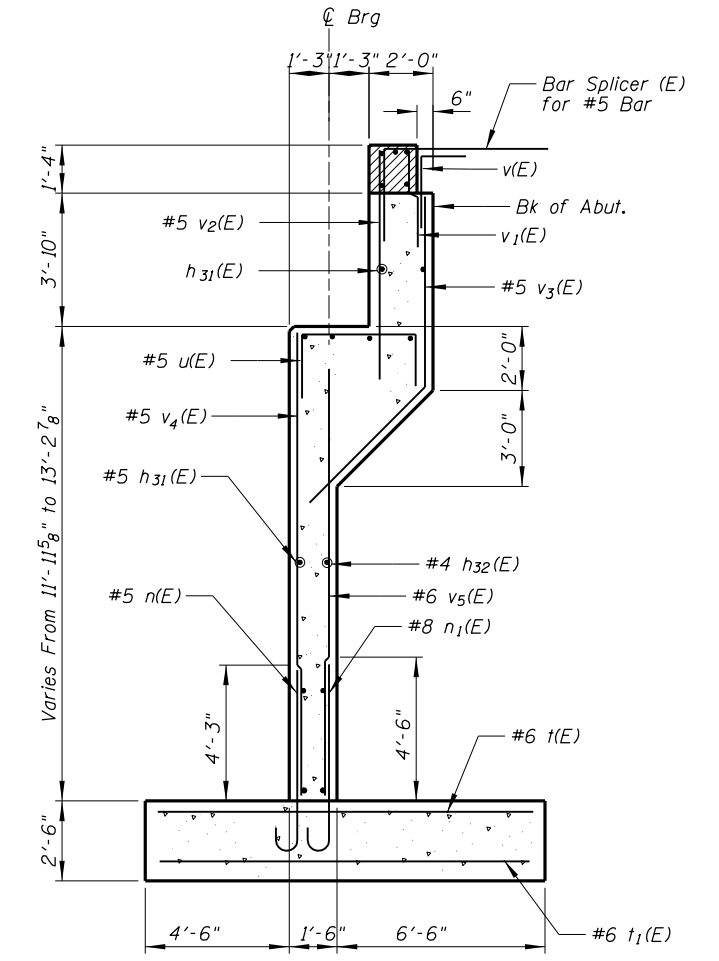


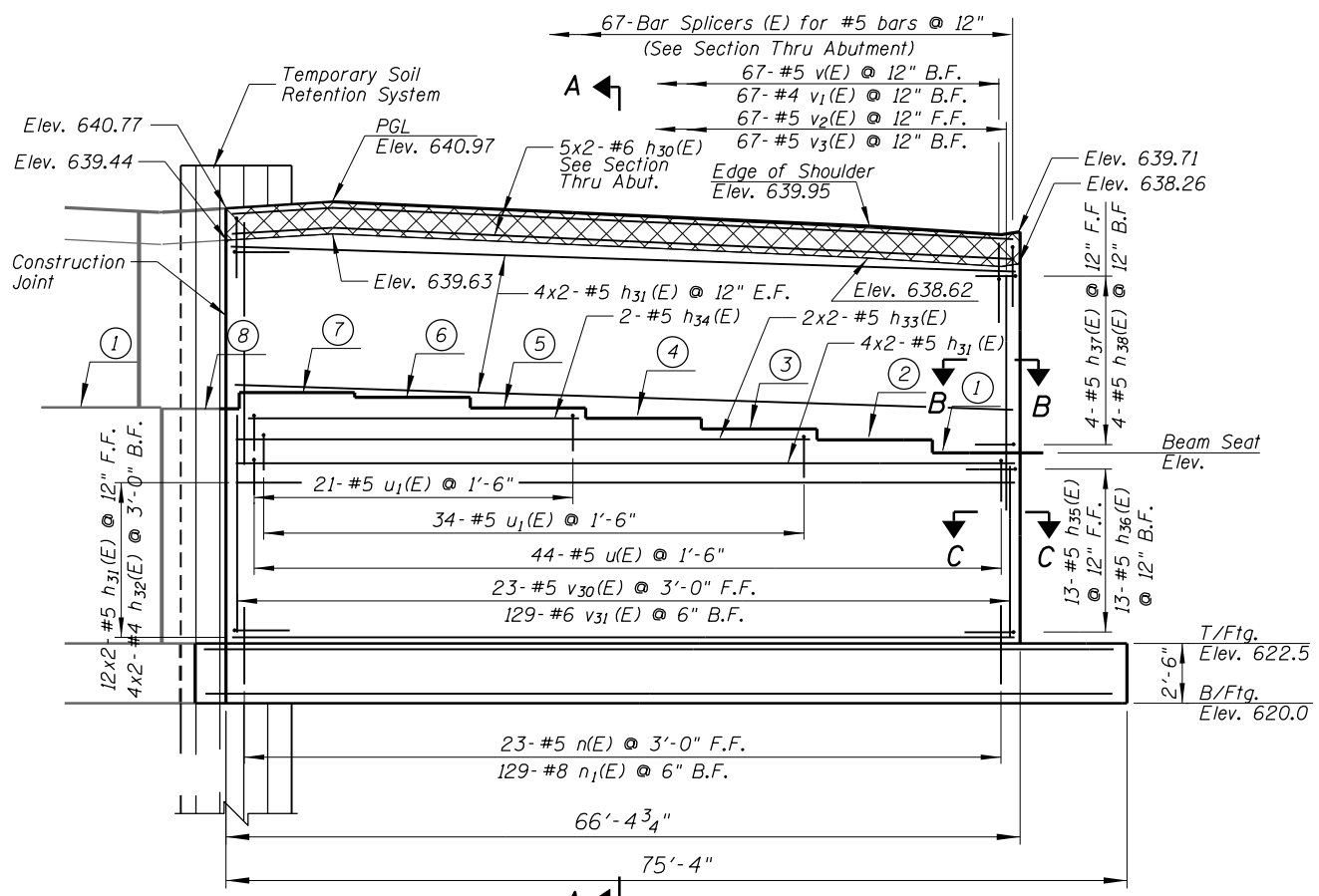
PLAN



ANCHOR BOLT LOCATION



SECTION A-A



ELEVATION

Maximum Applied Service Bearing Pressure (Q_{max}) = 5.8 ksf

BEAM SEAT ELEVATION

Beam	Elevation
1	634.47
2	634.75
3	634.98
4	635.20
5	635.42
6	635.63
7	635.74
8	635.39

BEAM STEPS

Beam	Step Height (in.)
1-2	3 3/8
2-3	2 3/4
3-4	2 5/8
4-5	2 5/8
5-6	2 1/2
6-7	1 3/8
7-8	-4 1/4

NOTES:

1. Reinforcement bars designated (E) shall be epoxy coated.
2. Bars indicated thus 1x2 - #5 etc. indicates 1 line of bars with 2 lengths per line.
3. Space reinforcement in cap to miss anchor bolts.
4. Pour steps monolithically with cap.
5. Hatched area to be poured after superstructure false work has been removed. Quality of concrete included in "Concrete Superstructure".

LEGEND:

F.F Front Face
 B.F. Back face
 E.F. Each face

MINIMUM BAR LAP

- #4 bar = 2'-3"
- #5 bar = 2'-10"
- #6 bar = 3'-10"
- #8 bar = 6'-9"

THIS SHEET IS FOR INFORMATION ONLY

N:\ROSEMONT\11000\CADD\Sheets\Fabrication_CADD_Sheets\49-0167942-0168037-021_SAbutment.dgn
 CHRISTOPHER B. BURKE ENGINEERING, LTD.
 8575 W. Higgins Road, Suite 600
 Rosemont, Illinois 60018
 (847) 924-8900

USER NAME =	DESIGNED - MM	REVISIONS
PLOT SCALE =	CHECKED - JMB	REVISIONS
PLOT DATE =	DRAWN - PDR	REVISIONS
	CHECKED - MM	REVISIONS

**STATE OF ILLINOIS
 DEPARTMENT OF TRANSPORTATION**

**SOUTH ABUTMENT - PLAN AND ELEVATION
 SB MANNHEIM ROAD BRIDGE - STRUCTURE NO. 016-7942**

F.A. RTE.	SECTION	COUNTY	TOTAL SHEETS	SHEET NO.
330	0105-F	COOK	55	49
CONTRACT NO. 60V68				

SHEET NO. S-21 OF S-27 SHEETS

ILLINOIS FED. AID PROJECT