

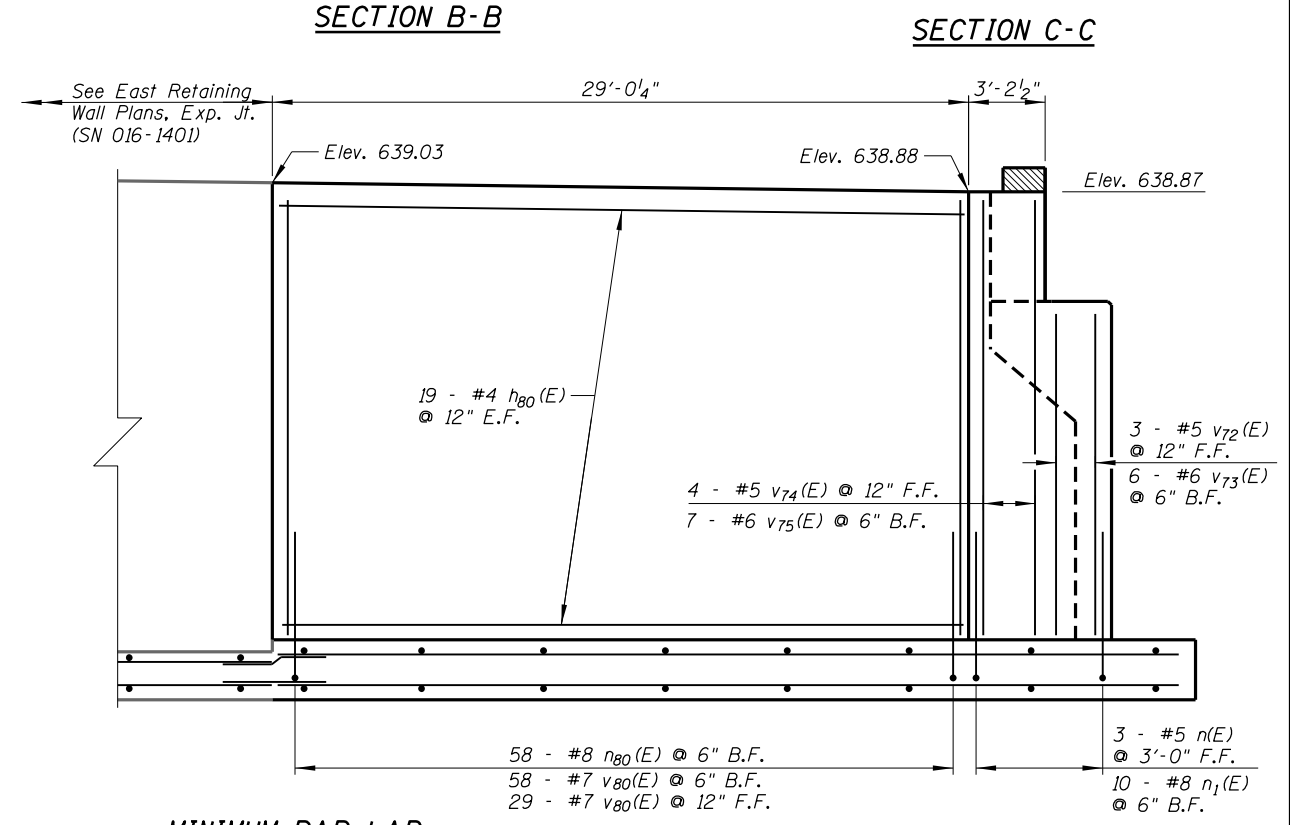
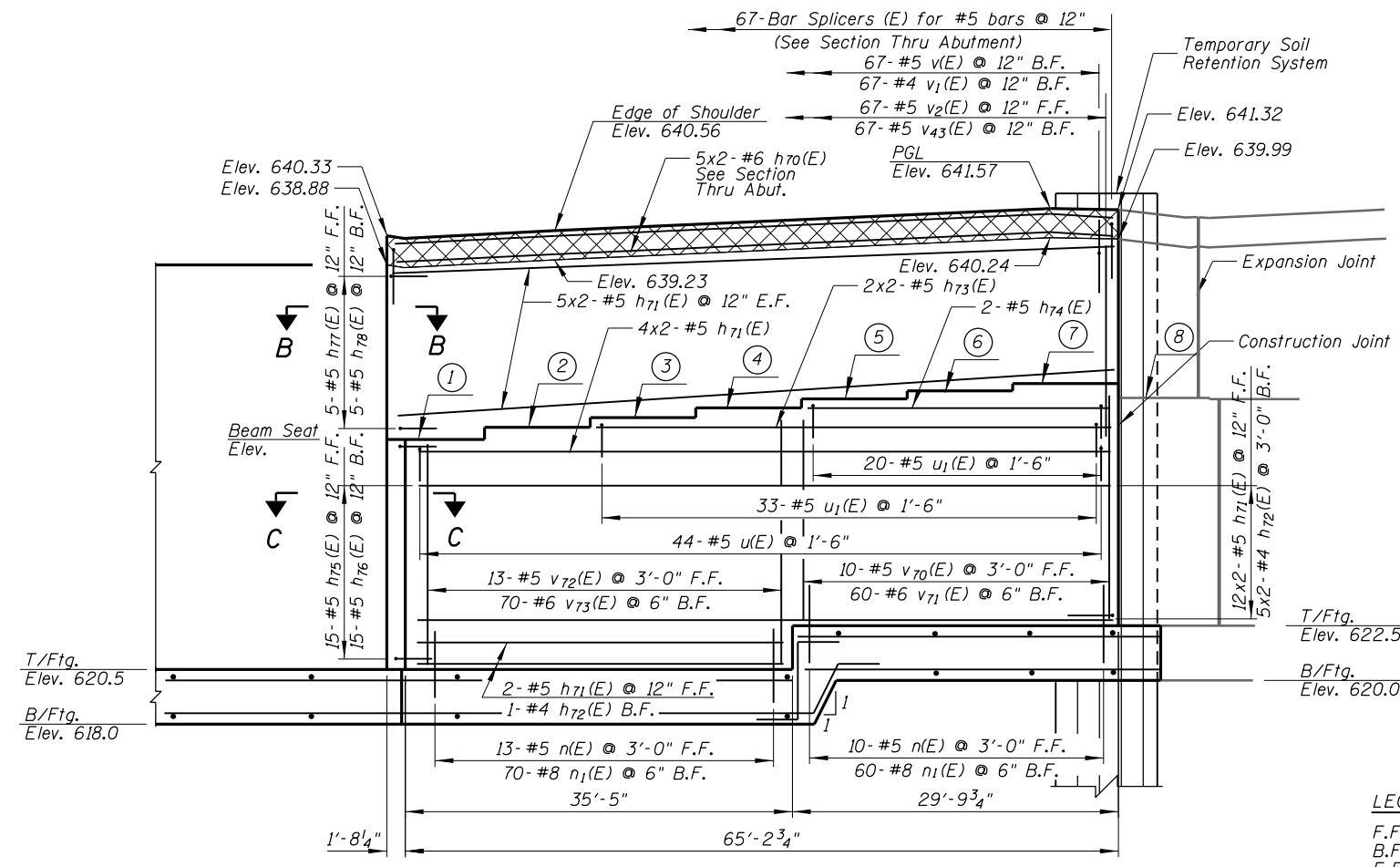
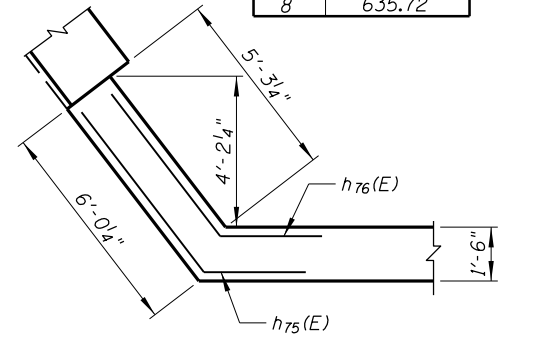
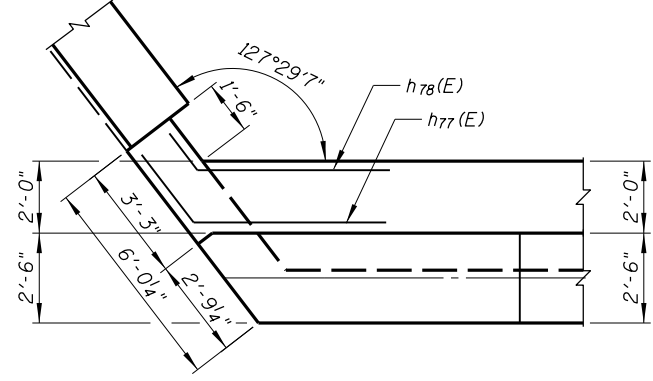
- NOTES:**
1. Reinforcement bars designated (E) shall be epoxy coated.
  2. Bars indicated thus 1x2 - #5 etc. indicates 1 line of bars with 2 lengths per line.
  3. Space reinforcement in cap to miss anchor bolts.
  4. Pour steps monolithically with cap.
  5. Hatched area to be poured after superstructure false work has been removed. Quality of concrete included in "Concrete Superstructure".

**BEAM STEPS**

Beam	Step Height
1-2	3 3/8
2-3	2 5/8
3-4	2 5/8
4-5	2 5/8
5-6	2 1/2
6-7	1 5/8
7-8	-4 1/8

**BEAM SEAT ELEVATION**

Beam	Elevation
1	634.77
2	635.05
3	635.27
4	635.49
5	635.71
6	635.92
7	636.06
8	635.72



- LEGEND:**
- F.F. Front Face  
B.F. Back Face  
E.F. Each Face
- MINIMUM BAR LAP**
- #4 bar = 2'-3"
  - #5 bar = 2'-10"
  - #6 bar = 3'-10"
  - #8 bar = 6'-9"

Maximum Applied Service Bearing Pressure ( $Q_{max}$ ) = 5.8 ksf

**THIS SHEET IS FOR INFORMATION ONLY**

NY:ROSEMONT\11000\CADD\Sheets\51-0167942-0168037-023\_Mabutment.dwg  
 CHRISTOPHER B. BURKE ENGINEERING, LTD.  
 8575 W. Higgins Road, Suite 600  
 Rosemont, Illinois 60018  
 (847) 924-6900

USER NAME =	DESIGNED - MM	REVISD
PLOT SCALE =	CHECKED - JMB	REVISD
PLOT DATE =	DRAWN - PDR	REVISD
	CHECKED - MM	REVISD

**STATE OF ILLINOIS  
DEPARTMENT OF TRANSPORTATION**

**NORTH ABUTMENT - PLAN AND ELEVATION  
SB MANNHEIM ROAD BRIDGE - STRUCTURE NO. 016-7942**

F.A. RTE.	SECTION	COUNTY	TOTAL SHEETS	SHEET NO.
330	0105-F	COOK	55	51
CONTRACT NO. 60V68				
ILLINOIS FED. AID PROJECT				

SHEET NO. S-23 OF S-27 SHEETS