

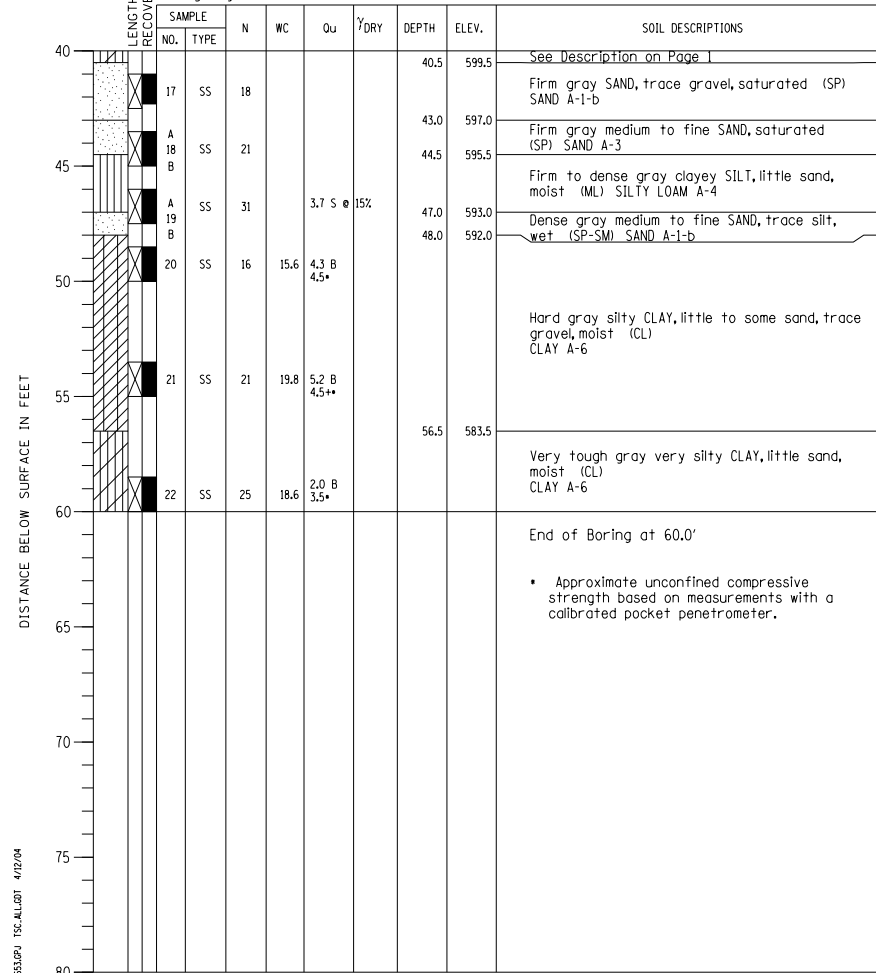
PROJECT Balmoral Avenue Extension - Phase II, Rosemont, Illinois
 CLIENT Christopher B. Burke Engineering, Ltd., Rosemont, Illinois
 BORING 17 DATE STARTED 12-11-01 DATE COMPLETED 12-11-01 JOB L-52,653



ELEVATIONS
 GROUND SURFACE 640.0
 END OF BORING 580.0

WATER LEVEL OBSERVATIONS
 WHILE DRILLING Dry to 10.0'
 AT END OF BORING Rotary Wash
 24 HOURS Grouted

Boring 17 was designated B-1 when originally drilled in December 2001.



DRILL RIG NO. 144
 Division lines between deposits represent approximate boundaries between soil types; in-situ, the transition may be gradual.
 Page 2 of 2

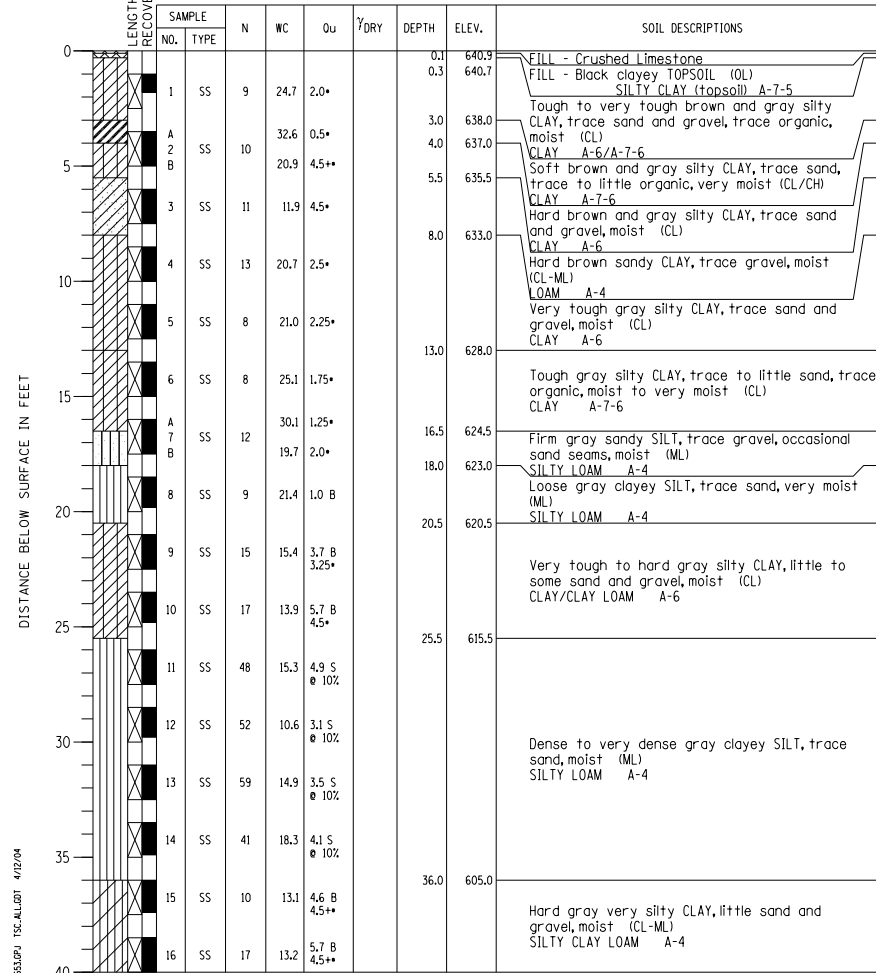
BORING NO. 17
 Station 75+35.16
 Offset 54.23' LT

PROJECT Balmoral Avenue Extension - Phase II, Rosemont, Illinois
 CLIENT Christopher B. Burke Engineering, Ltd., Rosemont, Illinois
 BORING 18 DATE STARTED 10-9-02 DATE COMPLETED 10-14-02 JOB L-52,653



ELEVATIONS
 GROUND SURFACE 641.0
 END OF BORING 581.0

WATER LEVEL OBSERVATIONS
 WHILE DRILLING Dry to 10.0'
 AT END OF BORING Rotary Wash
 24 HOURS



DRILL RIG NO. 144
 Division lines between deposits represent approximate boundaries between soil types; in-situ, the transition may be gradual.
 Page 1 of 2

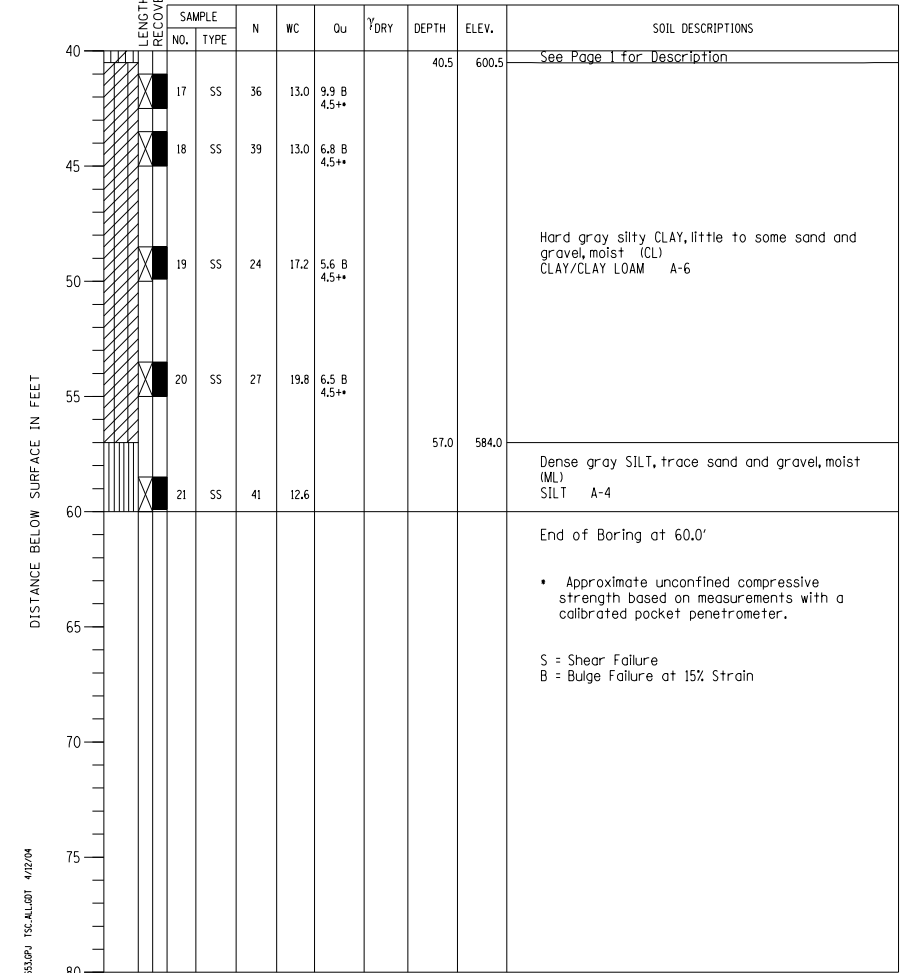
BORING NO. 18
 Station 74+62.24
 Offset 12.48' LT

PROJECT Balmoral Avenue Extension - Phase II, Rosemont, Illinois
 CLIENT Christopher B. Burke Engineering, Ltd., Rosemont, Illinois
 BORING 18 DATE STARTED 10-9-02 DATE COMPLETED 10-14-02 JOB L-52,653



ELEVATIONS
 GROUND SURFACE 641.0
 END OF BORING 581.0

WATER LEVEL OBSERVATIONS
 WHILE DRILLING Dry to 10.0'
 AT END OF BORING Rotary Wash
 24 HOURS



DRILL RIG NO. 144
 Division lines between deposits represent approximate boundaries between soil types; in-situ, the transition may be gradual.
 Page 2 of 2

BORING NO. 18
 Station 74+62.24
 Offset 12.48' LT

N:\ROSEMONT\11000\CADD_Sheets\Fabrication_CADD_Sheets\55-0167942-0168037-027_Boring.dgn

THIS SHEET IS FOR INFORMATION ONLY

CHRISTOPHER B. BURKE ENGINEERING, LTD. 8575 W. Higgins Road, Suite 600 Rosemont, Illinois 60018 (847) 924-8800	USER NAME =	DESIGNED - MM	REVISED	STATE OF ILLINOIS DEPARTMENT OF TRANSPORTATION	BORING LOGS SB MANNHEIM ROAD BRIDGE - STRUCTURE NO. 016-7942	F.A. RTE. = 330	SECTION = 0105-F	COUNTY = COOK	TOTAL SHEETS = 55	SHEET NO. = 55
	PLOT SCALE =	DRAWN - PDR	REVISED			CONTRACT NO. 60V68		ILLINOIS FED. AID PROJECT		
	PLOT DATE =	CHECKED - MM	REVISED	SHEET NO. S-27 OF S-27 SHEETS						