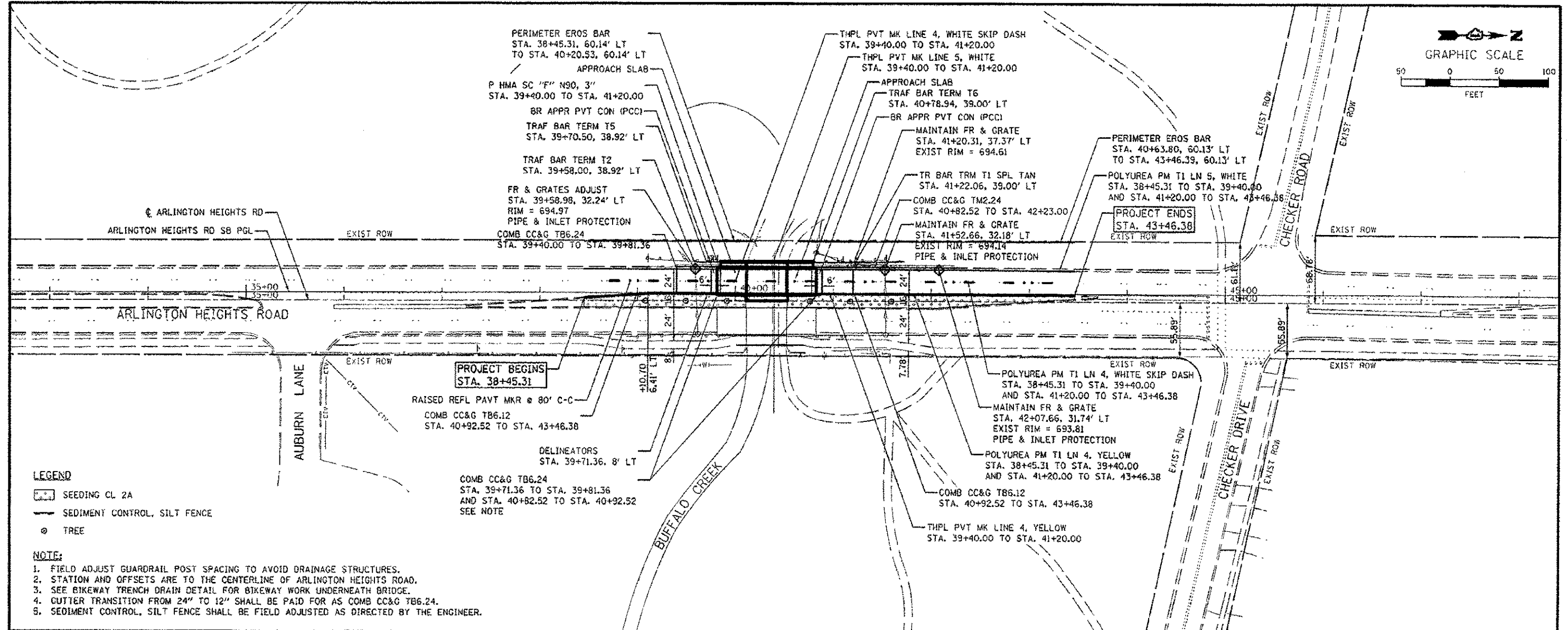


DATE	
BY	
PROJECT NO.	
NO. OF SHEETS	
NO. OF THIS SHEET	
DATE	

DATE	
BY	
PROJECT NO.	
NO. OF SHEETS	
NO. OF THIS SHEET	
DATE	

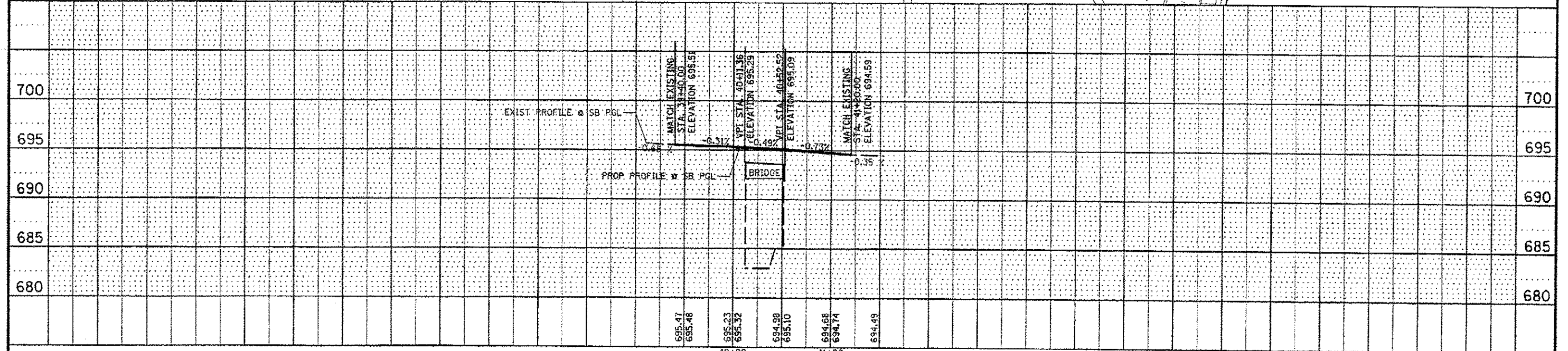


LEGEND

- SEEDING CL 2A
- SEDIMENT CONTROL, SILT FENCE
- TREE

NOTE:

1. FIELD ADJUST GUARDRAIL POST SPACING TO AVOID DRAINAGE STRUCTURES.
2. STATION AND OFFSETS ARE TO THE CENTERLINE OF ARLINGTON HEIGHTS ROAD.
3. SEE BIKEWAY TRENCH DRAIN DETAIL FOR BIKEWAY WORK UNDERNEATH BRIDGE.
4. CUTTER TRANSITION FROM 24" TO 12" SHALL BE PAID FOR AS COMB CC&G TB6.24.
5. SEDIMENT CONTROL, SILT FENCE SHALL BE FIELD ADJUSTED AS DIRECTED BY THE ENGINEER.



FILE NAME: LCH43-enr-plan.pdf	USER NAME: 202111143	DESIGNED - TC	REVISED -	STATE OF ILLINOIS DEPARTMENT OF TRANSPORTATION	PLAN AND PROFILE	F.A. RTE. 2626	SECTION 10-00193-07-BR	COUNTY LAKE	TOTAL SHEETS 37	SHEET NO. 8	
PLD. SCALE: 1/8"=1'-0"	PLD. DATE: 4/28/2012	DRAWN - LOM	REVISED -			SCALE: 1/4"=1'-0"	SHEET 1 OF 1 SHEETS	STA. 38+45.31 TO STA. 43+46.38	CONTRACT NO. 63713		ILLINOIS FED. AID PROJECT
		CHECKED - PK	REVISED -								
		DATE - 4/2012	REVISED -								