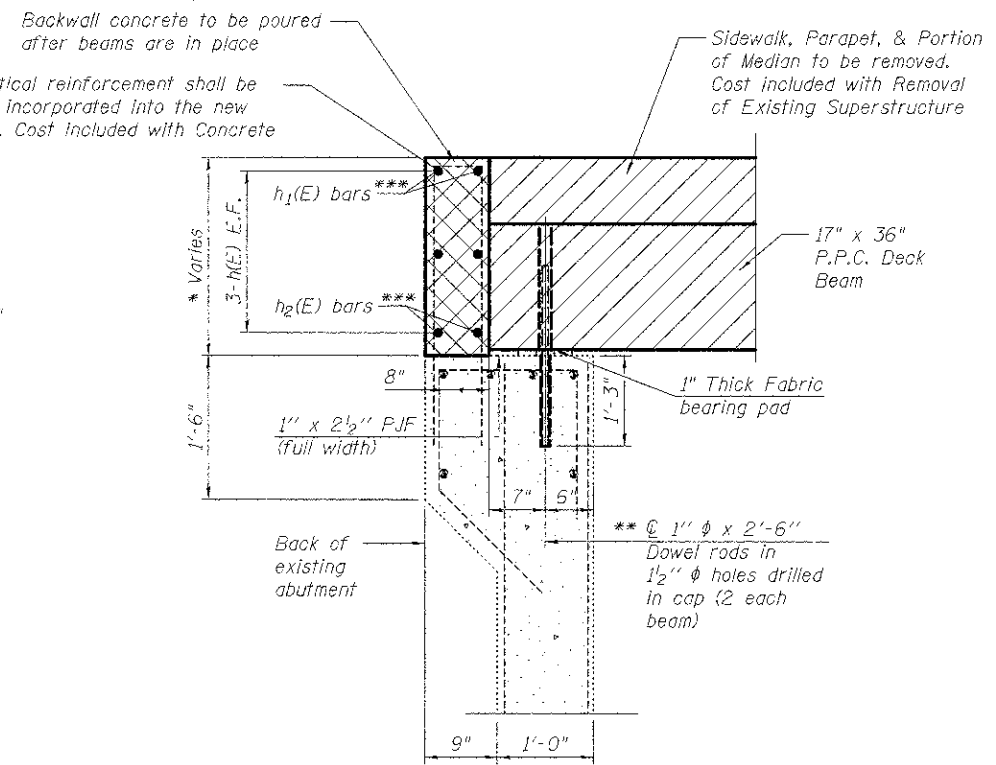
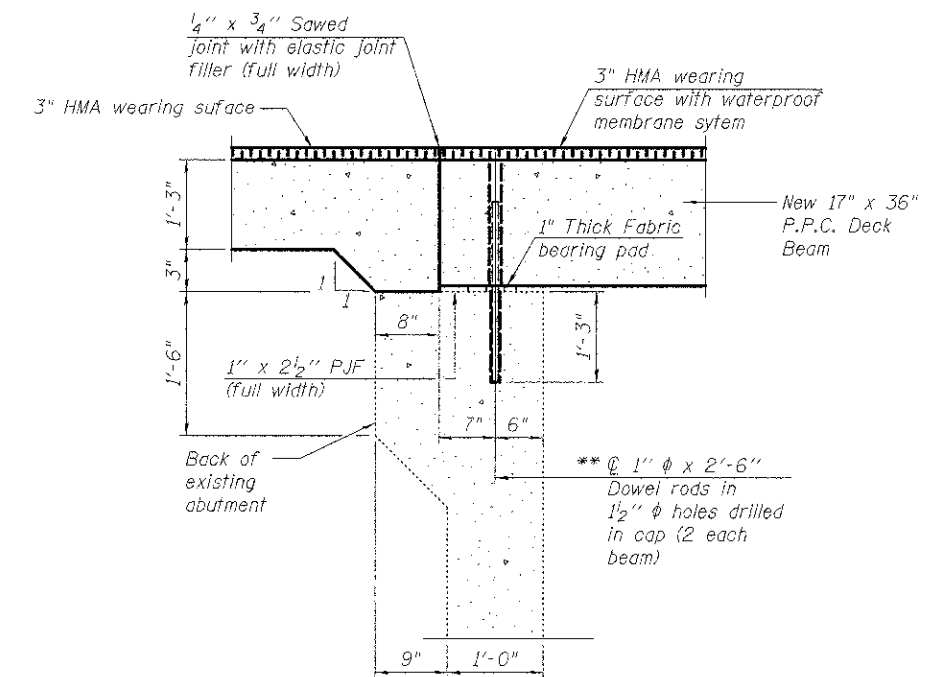


SECTION THRU ABUTMENT
(Typical at Approach Slab)



SECTION THRU ABUTMENT
(Typical at Sidewalk and Median)*

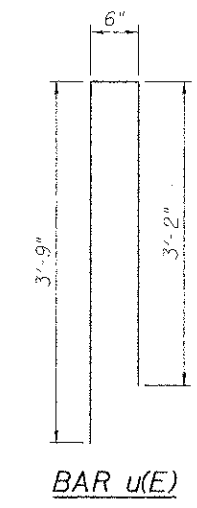
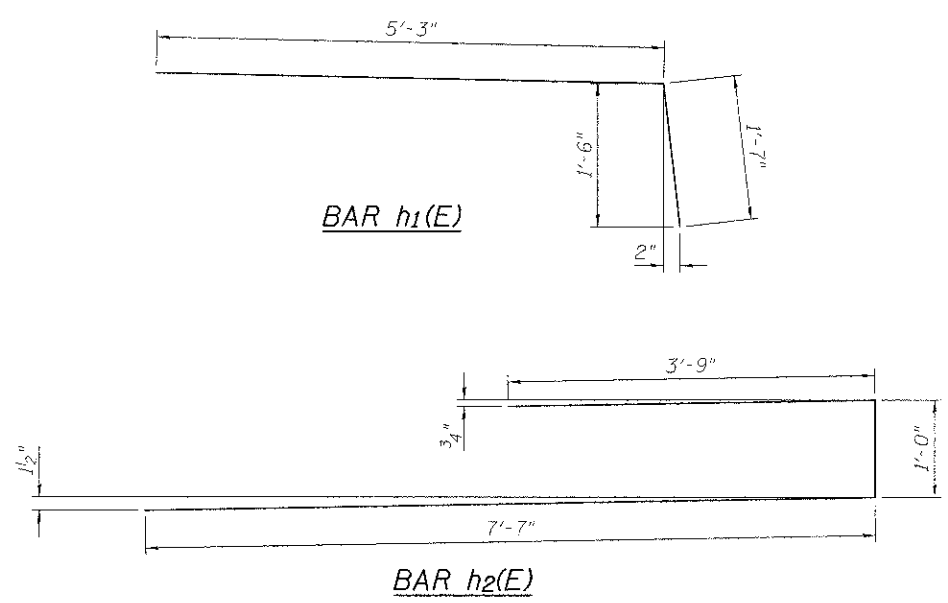


PROPOSED SECTION THRU ABUTMENT
(Typical at Approach Slab)

- * See Elevations on Sheets 11 of 15.
- ** Existing Dowel Rods shall be cut flush with the top of abutment seat. After beams have been erected, holes shall be drilled into substructure and anchor dowels placed.
- *** h₁(E) bars in backwall at Concrete Median
h₁(E) and h₂(E) bars in backwall at Sidewalk

**TWO BACKWALL
BILL OF MATERIAL**

Bar	No.	Size	Length	Shape
h ₁ (E)	12	#5	5'-8"	—
h ₁ (E)	4	#5	6'-10"	—
h ₂ (E)	4	#5	12'-4"	—
u(E)	4	#5	7'-5"	Π
Concrete Structures			Cu. Yd.	1.7
Reinforcement Bars, Epoxy Coated			Pound	370



LEGEND:

- Limits of Approach Slab Removal
- Limits of Concrete removal
- Limits of Removal of Existing Superstructure

