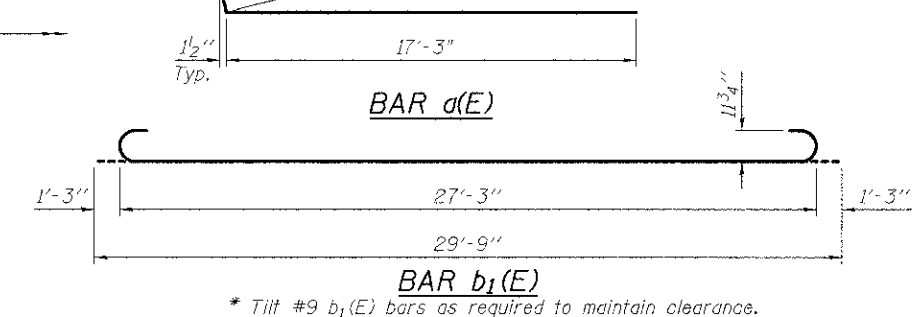
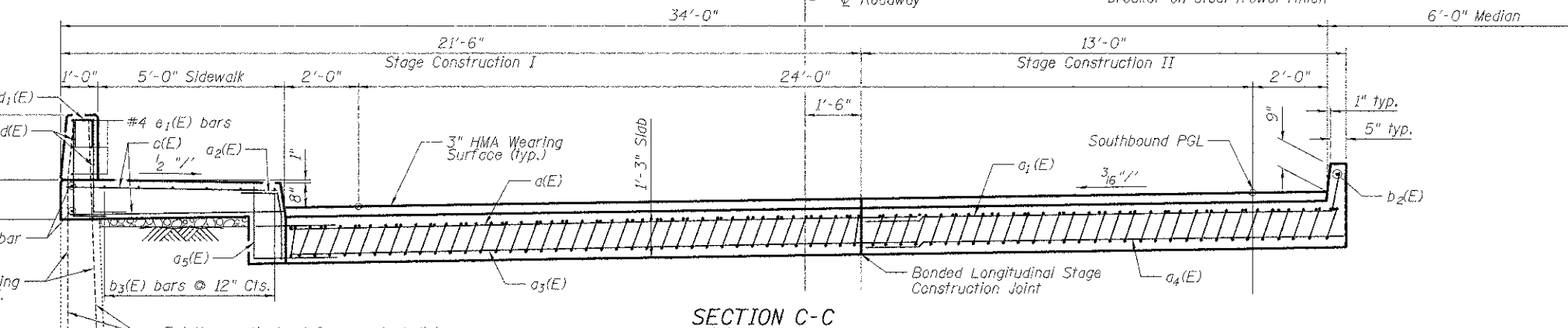
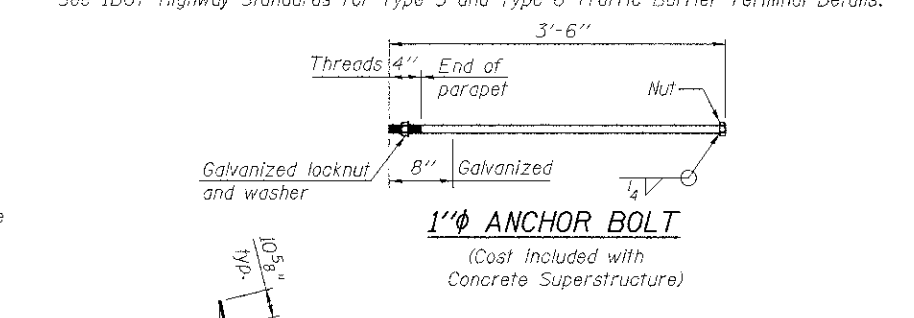
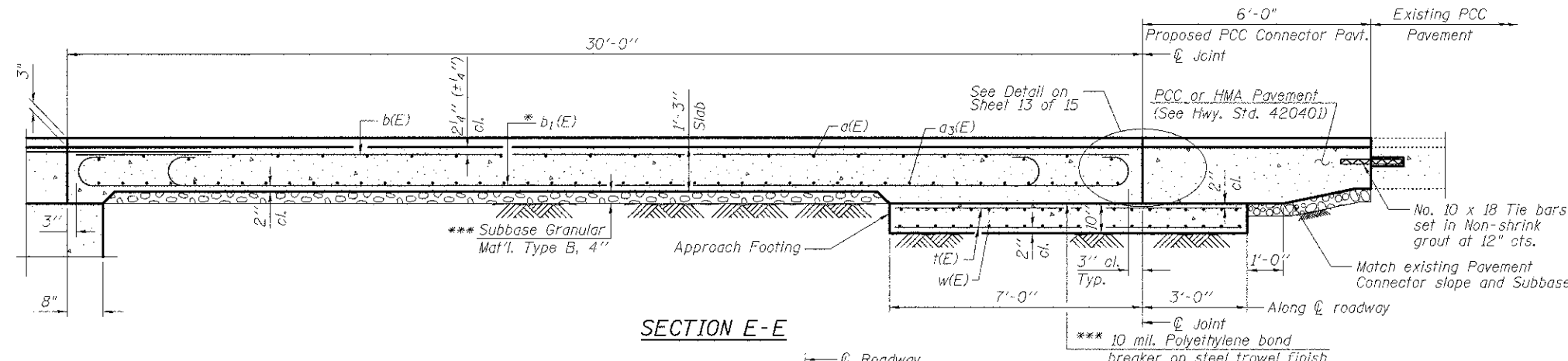


Notes:  
 See sheet No. 13 of 15 for Detail A and View B-B.  
 Approach slab and parapet concrete shall be paid for as Concrete Superstructure.  
 Approach footing concrete shall be paid for as Concrete Structures.  
 Reinforcement shall be paid for as Reinforcement Bars, Epoxy Coated.  
 The approach footing maximum applied service bearing pressure (0max) = 2.0 ksf.  
 Cost of excavation for approach footing included with Concrete Structures.  
 See IDOT Highway Standards for Type 5 and Type 6 Traffic Barrier Terminal Details.



\* Tilt #9 b1(E) bars as required to maintain clearance.  
 \*\*\* Cost included with Concrete Superstructure.

**TWO APPROACHES  
 BILL OF MATERIAL**

Bar	No.	Size	Length	Shape
a(E)	50	#4	18'-1"	—
a1(E)	50	#4	12'-4"	—
a2(E)	44	#4	2'-2"	—
a3(E)	92	#5	17'-10"	—
a4(E)	92	#5	12'-4"	—
a5(E)	80	#5	4'-2"	—
a6(E)	8	#4	18'-1"	—
a7(E)	8	#4	12'-4"	—
b(E)	50	#4	29'-8"	—
b1(E)	136	#9	29'-9"	—
b2(E)	2	#4	29'-8"	—
b3(E)	16	#4	26'-1"	—
b4(E)	80	#4	2'-5"	—
c(E)	108	#5	5'-7"	—
d(E)	108	#6	3'-5"	—
d1(E)	54	#4	2'-0"	—
d2(E)	12	#6	4'-11"	—
e1(E)	12	#4	26'-1"	—
e2(E)	16	#4	3'-8"	—
i(E)	116	#4	9'-8"	—
w(E)	80	#5	17'-9"	—
w1(E)	80	#5	12'-4"	—
Concrete Superstructure			Cu. Yd.	95.5
Concrete Structures			Cu. Yd.	17.3
Protective Coat			Sq. Yd.	61
Name Plate			Each	1
Reinforcement Bars, Epoxy Coated			Pound	24,480
Relocating Name Plates			Each	1

