

STATE OF ILLINOIS
DEPARTMENT OF TRANSPORTATION
DIVISION OF HIGHWAYS

PLANS FOR
PROPOSED FEDERAL
AID HIGHWAY

WOODLAND DRIVE OVER FLINT CREEK
BRIDGE REPLACEMENT

SECTION NO. 09-00010-00-BR

PROJECT NO. BRM-9003(504)

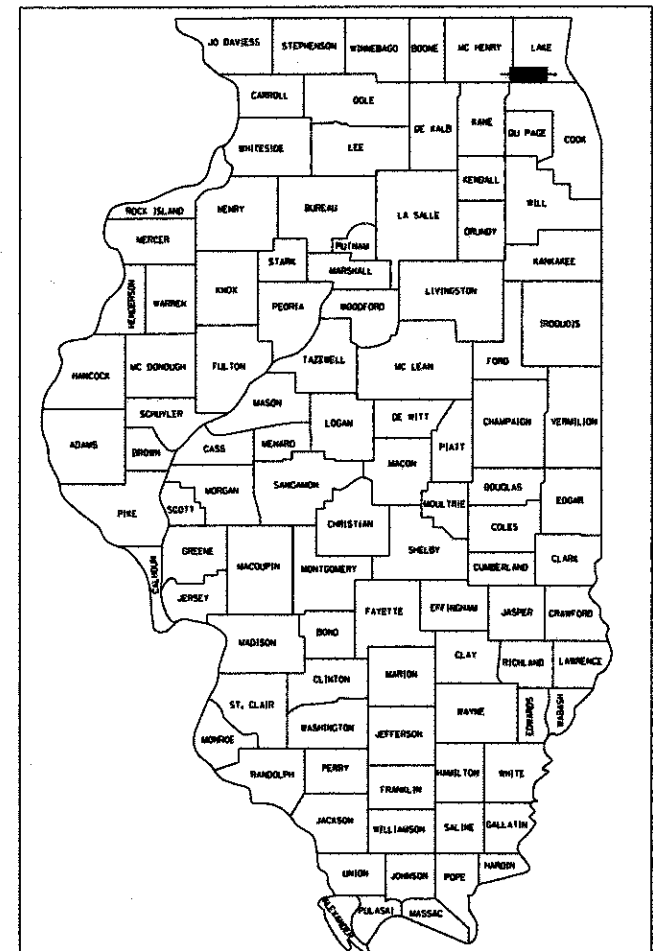
JOB NO. C-91-123-10

VILLAGE OF LAKE BARRINGTON
LAKE COUNTY

F.A.P. RTE.	SECTION	COUNTY	TOTAL SHEETS	SHEET NO.
	09-00010-00-BR	LAKE	41	1
FED. ROAD DIST. NO. 1	ILLINOIS	CONTRACT NO.	63716	

41+1 = 42

SECTION NO. 09-00010-00-BR
CONTRACT NO. 63716



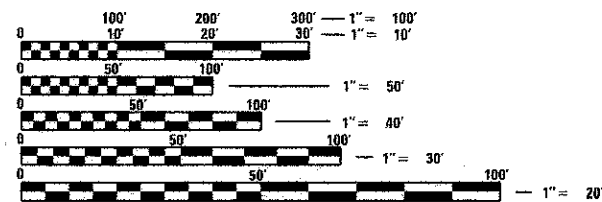
LOCATION OF SECTION INDICATED THUS: - [shaded box] -

FOR INDEX OF SHEETS, SEE SHEET NO. 2
FOR HIGHWAY STANDARDS, SEE SHEET NO. 2

DESIGN DESIGNATION = LOCAL ROAD
TRAFFIC = < 500 VPD
POSTED SPEED LIMIT = 25 MPH

PROJECT LOCATED IN THE
VILLAGE OF LAKE BARRINGTON

PROGRAM AND OFFICE ENGINEER: CHARLES F. RIDDLE, P.E. (847) 705-4406 SCHAMBOURG, IL

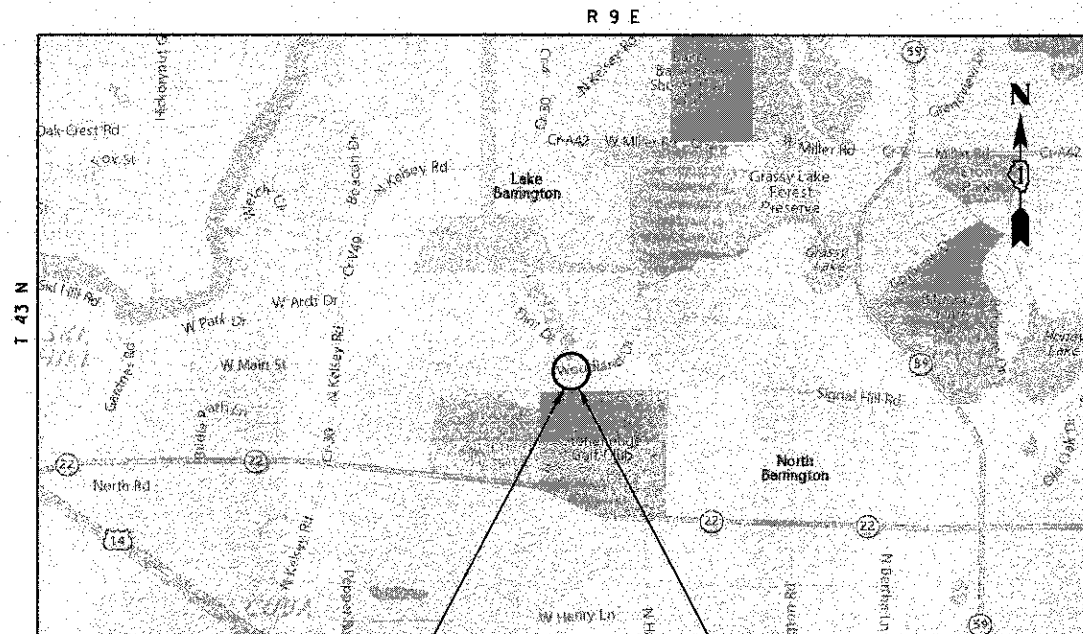


FULL SIZE PLANS HAVE BEEN PREPARED USING STANDARD ENGINEERING SCALES. REDUCED SIZED PLANS WILL NOT CONFORM TO STANDARD SCALES. IN MAKING MEASUREMENTS ON REDUCED PLANS, THE ABOVE SCALES MAY BE USED.

J.U.L.I.E.
JOINT UTILITY LOCATION INFORMATION FOR EXCAVATION
1-800-892-0123
OR 811



NAME: RICK YOUNG
EXP. 11/30/2013
DATE:
SHT NO. 1-13, 30-41

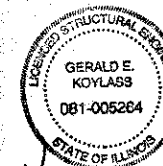


LOCATION MAP
N.T.S.

BEGIN IMPROVEMENT
STA 13+26.58 @ WOODLAND DR.
END IMPROVEMENT
STA 14+16.58 @ WOODLAND DR.

BRIDGE REPLACEMENT
STA. 13+71.58
EXISTING SN 049-6750
PROPOSED SN 049-6751

GROSS AND NET LENGTH = 90 FT. = 0.017 MILE



NAME: GERALD KOYLASS
EXP. 11/30/2012
DATE:
SHT NO. 14-29

CONTRACT NO. 63716

STATE OF ILLINOIS
DEPARTMENT OF TRANSPORTATION
DIVISION OF HIGHWAYS

APPROVED MAY 4, 2012

Car Martin
VILLAGE ENGINEER
ADMINISTRATOR

PASSED MAY 22, 2012

Colbert
DISTRICT 1 ENGINEER LOCAL ROADS AND STREETS

RELEASED FOR BID
BASED ON LIMITED
REVIEW MAY 24, 2012

Diane M. O'Keefe
DEPUTY DIRECTOR OF HIGHWAYS, REGION 1 ENGINEER

PRINTED BY THE AUTHORITY
OF THE STATE OF ILLINOIS

McDonough Associates Inc.
Engineers/Architects
180 North Station Avenue - Suite 1500
Chicago, Illinois 60601 Phone: (312) 946-9600