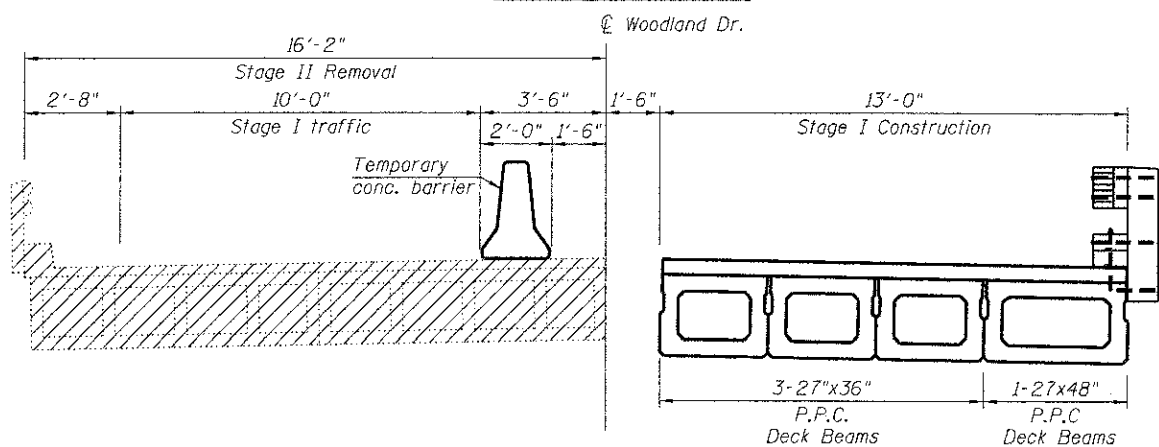
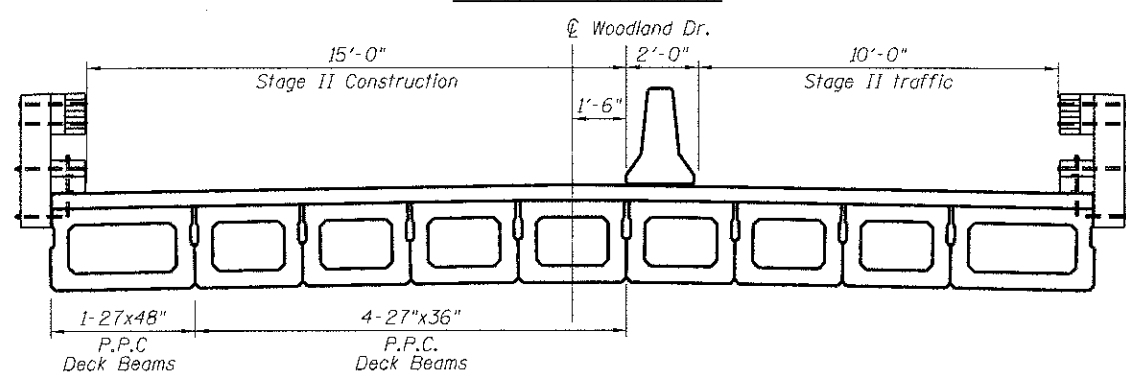


STAGE I REMOVAL



**STAGE I CONSTRUCTION
STAGE II REMOVAL**



STAGE II CONSTRUCTION

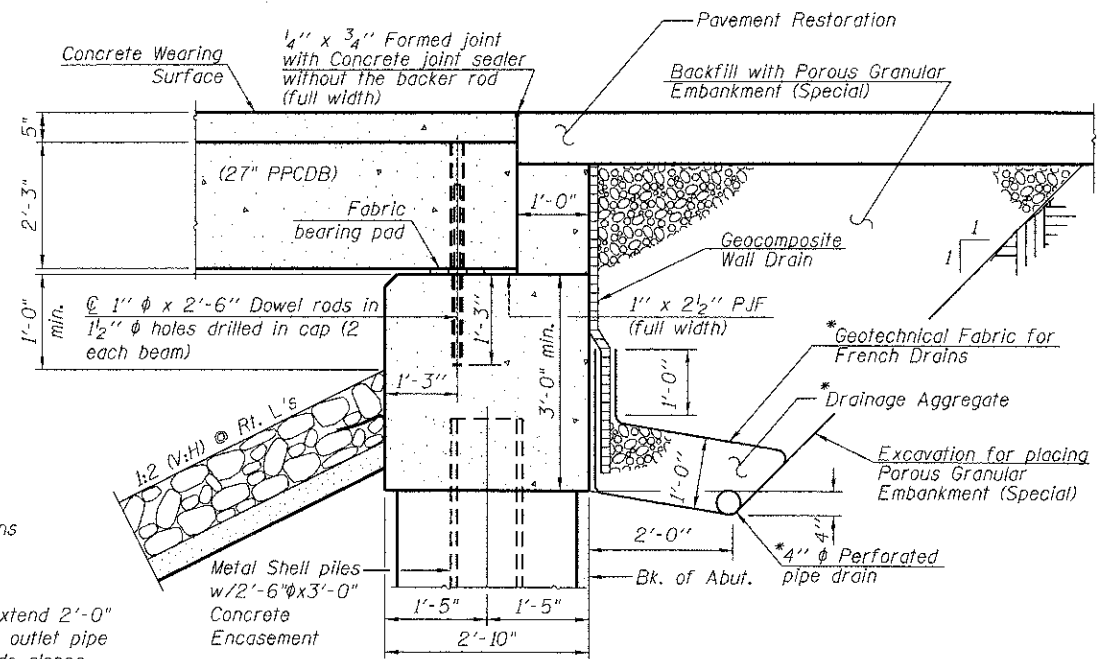
STAGE CONSTRUCTION

Notes:

If the Contractor chooses to alter the temporary cantilevered sheet piling design requirements shown on the plans, a design submittal including plan details and calculations will be required for review and acceptance by the Engineer.

The Contractor shall connect the first sheet to the existing abutment wall to ensure stability of sheets driven to the top of the existing footing. This connection shall be reviewed and accepted by the Engineer and included in the cost for Temporary Sheet Piling.

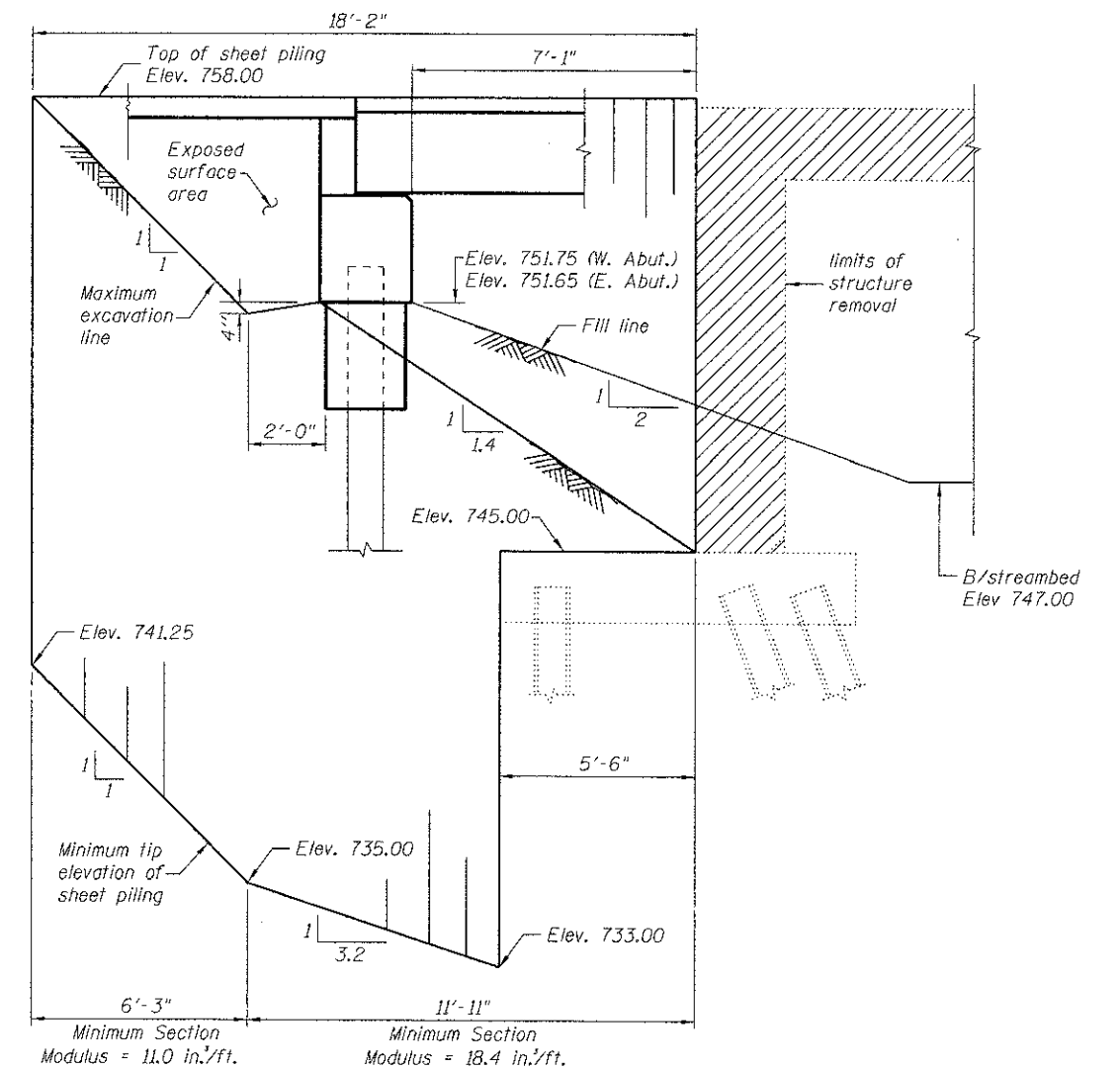
All dimensions relative to the existing abutment are assumptions and need to be field verified. There are no existing plans for the structure.



SECTION THRU ABUTMENT

* Included in the cost of Pipe Underdrains for Structures 4.

Note:
All drainage system components shall extend 2'-0" from the end of each wingwall except an outlet pipe shall extend until intersecting with the side slopes. The pipes shall drain into concrete headwalls. (See Article 601.05 of the Standard Specifications and Highway Standard 601101)



TEMPORARY SHEET PILING