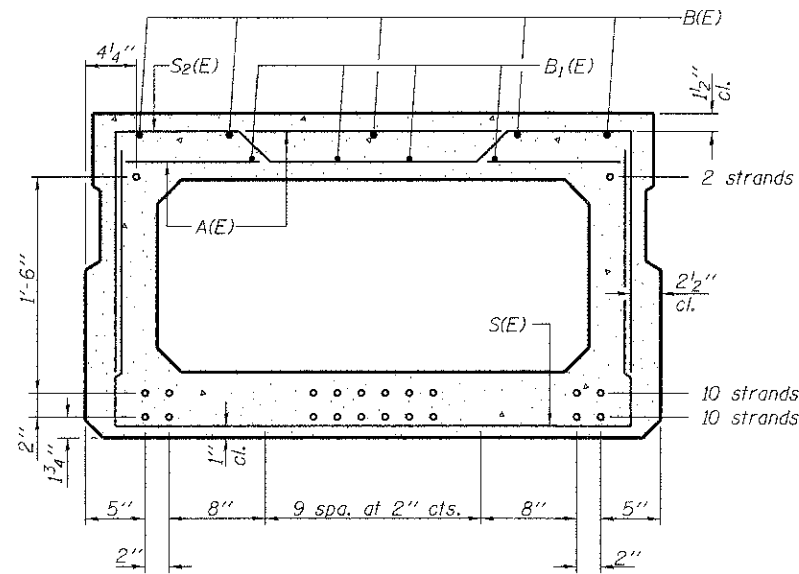


SECTION B-B
(Showing dimensions)



SECTION B-B

(Showing reinforcement and permissible strand locations)
Note: Place the number of strands specified in each row symmetrically about the centerline of beam in the permissible strand locations shown.

BAR LIST
ONE BEAM ONLY
(For information only)

Bar	No.	Size	Length	Shape
A(E)	50	#4	3'-7"	—
B(E)	5	#5	56'-10"	—
B1(E)	4	#4	56'-10"	—
S(E)	78	#4	7'-5"	U
S1(E)	10	#4	6'-11"	U
S2(E)	68	#4	7'-2"	U
U(E)	12	#5	4'-6"	C
U1(E)	4	#4	6'-0"	C

Note: See sheet 9 of for additional details and Bill of Material.

Note: Spacing of S(E) and S2(E) bars may be adjusted up to 4" in the immediate area of the transverse tie diaphragms to miss the block outs for the transverse ties.

MINIMUM BAR LAP

#4 bar = 2'-0"
#5 bar = 2'-6"

PD-2748-0

7-1-10

FILE NAME = 0496751-000-Deck Beam48.dgn
McDonough Associates Inc.
Engineers / Architects
100 North State Street, Chicago, Illinois 60601

USER NAME = jehhart
DESIGNED - JCE
CHECKED - GEK
DRAWN - JCE
CHECKED - CEK
PLOT SCALE = 1/20,000,000
PLOT DATE = 05/14/12

DESIGNED - JCE
CHECKED - GEK
DRAWN - JCE
CHECKED - CEK
REVISED -
REVISED -
REVISED -
REVISED -

STATE OF ILLINOIS
DEPARTMENT OF TRANSPORTATION

27" x 48" PPC DECK BEAM
STRUCTURE NO. 049-6751

SHEET NO. 8 OF 16 SHEETS

F.A. RTE.	SECTION	COUNTY	TOTAL SHEETS	SHEET NO.
	09-00010-00-BR	LAKE	41	21
ILLINOIS FED. AID PROJECT			CONTRACT NO. 63716	