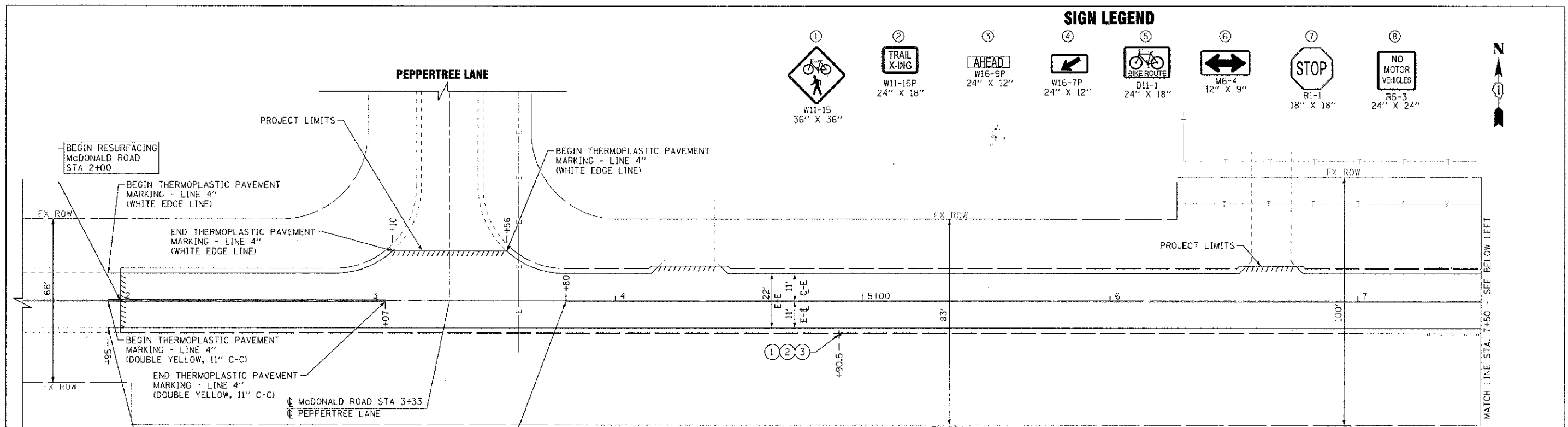
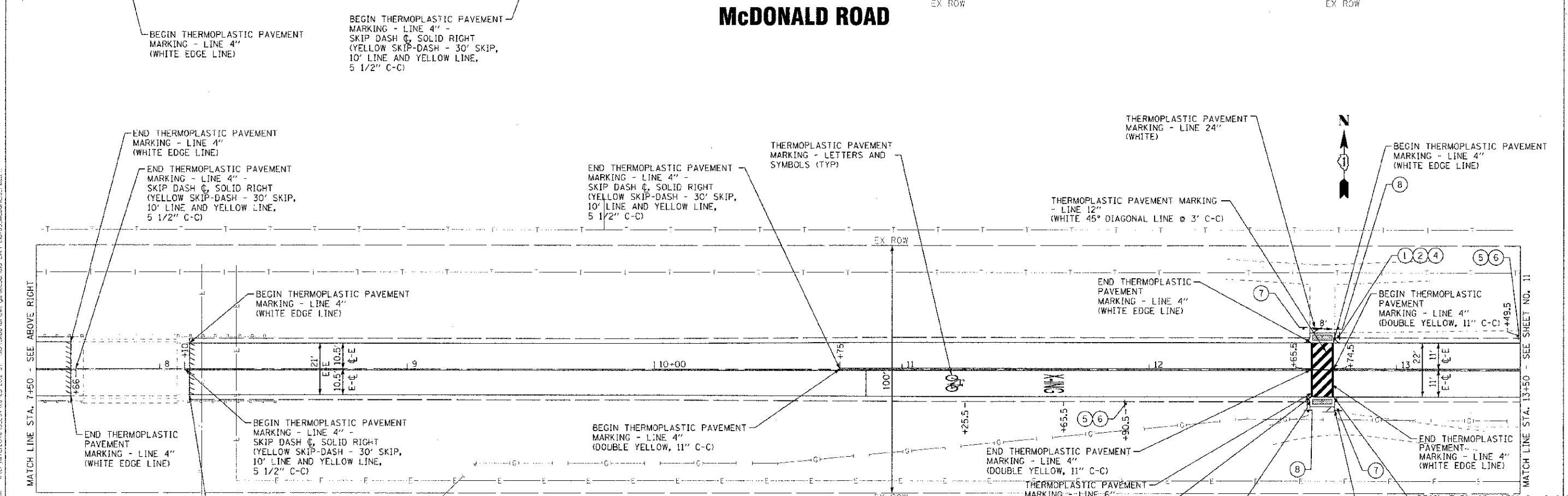


**SIGN LEGEND**

- ① W11-15  
36" X 36"
- ② TRAIL X-ING  
W11-15P  
24" X 18"
- ③ AHEAD  
W16-9P  
24" X 12"
- ④ W16-7P  
24" X 12"
- ⑤ BIKE ROUTE  
D11-1  
24" X 18"
- ⑥ M6-4  
12" X 9"
- ⑦ STOP  
R1-1  
18" X 18"
- ⑧ NO MOTOR VEHICLES  
R5-3  
24" X 24"



**McDONALD ROAD**



**McDONALD ROAD**



	DESIGNED - MWP	REVISED - IDOT REVIEW 06-20-12
	DRAWN - KAR	REVISED -
	CHECKED - MWP	REVISED -
	DATE - 06-22-12	FILE - 110783_McDonald_PM1.ent

**VILLAGE OF SOUTH ELGIN, ILLINOIS  
McDONALD ROAD  
STP IMPROVEMENTS**

**PAVEMENT MARKING PLAN - McDONALD ROAD**

SCALE: 1" = 20'  
STA. 2+00 TO STA. 13+50

F.A.P. RTE. 537	SECTION 12-00040-00-RS	COUNTY KANE	TOTAL SHEETS 21	SHEET NO. 10
FED. ROAD DIST. NO. 0-91-296-12	(ILLINOIS) FED. AID PROJECT M-90C31975	CONTRACT NO. 63741		

CONSULT: 2012 BY BAXTER WOODMAN, INC. PROJECT: 110783\_McDONALD ROAD STP IMPROVEMENTS  
 DRAWN BY: KAR (KAROLINA RYAN) DATE: 06-22-12  
 CHECKED BY: MWP (MICHAEL WOODMAN) DATE: 06-22-12  
 DESIGNED BY: MWP (MICHAEL WOODMAN) DATE: 06-22-12  
 FILE: 110783\_McDonald\_PM1.ent