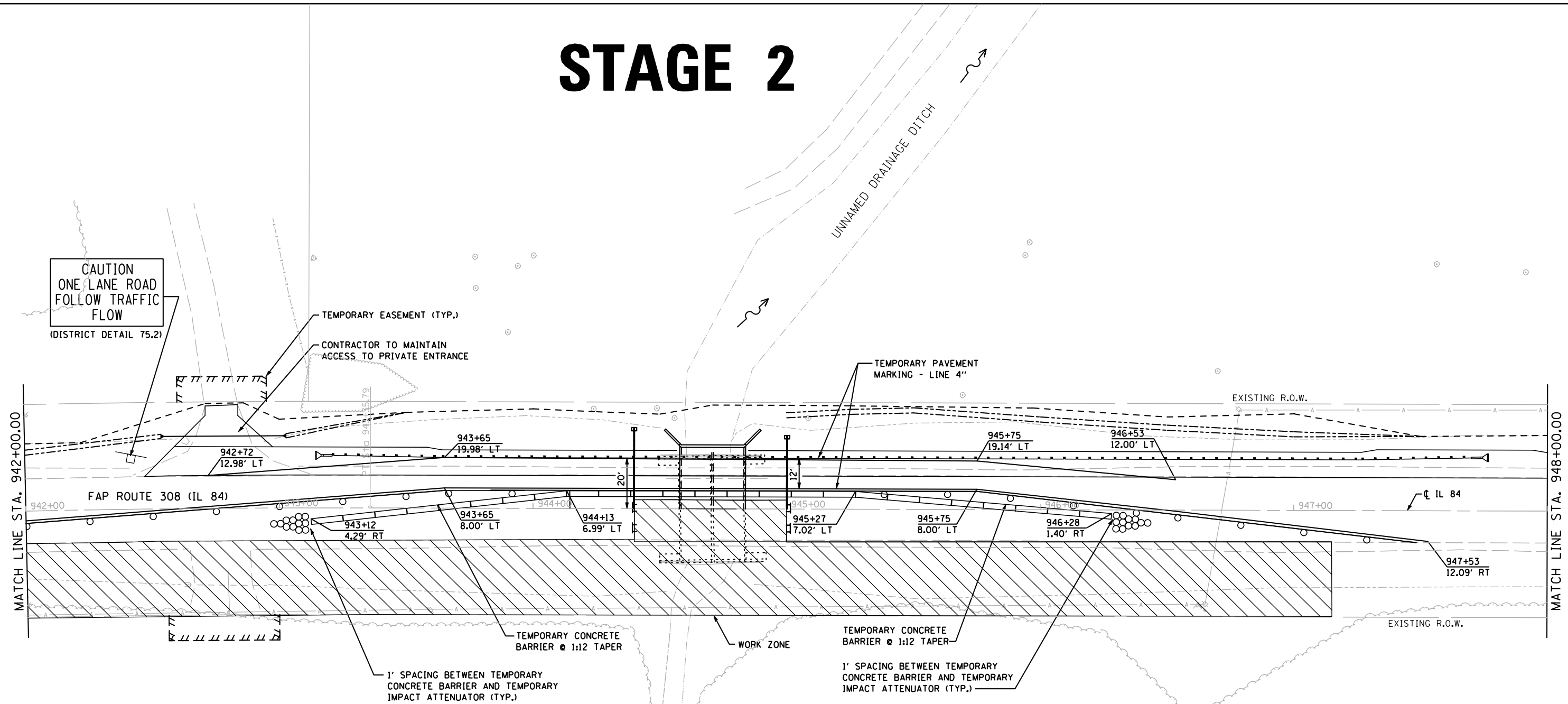


STAGE 2



CAUTION
ONE LANE ROAD
FOLLOW TRAFFIC
FLOW
(DISTRICT DETAIL 75.2)

MATCH LINE STA. 942+00.00

942+72 12.98' LT

943+65 19.98' LT

943+12 4.29' RT

943+65 8.00' LT

944+13 6.99' LT

944+00

945+00

945+27 17.02' LT

945+75 8.00' LT

945+75 19.14' LT

946+53 12.00' LT

946+28 1.40' RT

947+00

947+53 12.09' RT

MATCH LINE STA. 948+00.00

FAP ROUTE 308 (IL 84)

IL 84

TEMPORARY CONCRETE BARRIER @ 1:12 TAPER

TEMPORARY CONCRETE BARRIER @ 1:12 TAPER

1' SPACING BETWEEN TEMPORARY CONCRETE BARRIER AND TEMPORARY IMPACT ATTENUATOR (TYP.)

1' SPACING BETWEEN TEMPORARY CONCRETE BARRIER AND TEMPORARY IMPACT ATTENUATOR (TYP.)

WORK ZONE

LEGEND:

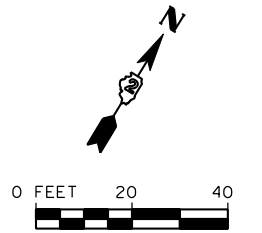
	= WORK ZONE
	= TEMPORARY PAVEMENT
	= SIGN
	= TYPE III BARRICADE
	= DRUM WITH STEADY BURNING LIGHTS
	= TRAFFIC SIGNAL

STAGE 2 NOTES:

1. RELOCATE TRAFFIC CONTROL AND TEMPORARY SIGNALS ACCORDING TO STAGE 2 MAINTENANCE OF TRAFFIC DETAILS AND STANDARD 701321.
2. REMOVE EAST SIDE OF CULVERT AND TEMPORARY PAVEMENT.
3. CONSTRUCT THE EAST SIDE OF THE CULVERT INCLUDING RIP-RAP, EARTHWORK, AND CLASS C PATCH.
4. REMOVE FIELD ENTRANCE AND CONSTRUCT PROPOSED AGGREGATE FIELD ENTRANCE AT STA. 941+70.
5. INSTALL PROPOSED HMA SHOULDERS ON NORTHBOUND LANE.
6. INSTALL THE PROPOSED GUARDRAIL ON THE EAST SIDE.

STAGE 3 NOTES:

1. REMOVE TRAFFIC CONTROL AND TEMPORARY TRAFFIC SIGNALS FROM PREVIOUS MAINTENANCE OF TRAFFIC DETAILS AND STANDARD 701321.
2. INSTALL HMA SURFACE COURSE MIX "C", N50
3. INSTALL PERMANENT PAVEMENT MARKINGS.



FILE NAME = s:\p1\6380--6395\6346\026\micro\cadd sheets\0264925-sh2-stage2.dgn



1170 SOUTH HOUBOLT ROAD JOLIET, ILLINOIS 60431 (815) 744-4200	USER NAME = brianf	DESIGNED -	REVISED -
	PLOT SCALE = 40.0000' / IN.	DRAWN -	REVISED -
	PLOT DATE = 8/15/2012	CHECKED -	REVISED -
		DATE -	REVISED -

**STATE OF ILLINOIS
DEPARTMENT OF TRANSPORTATION**

SUGGESTED MAINTENANCE OF TRAFFIC			
SCALE: AS SHOWN	SHEET NO.	OF SHEETS	STA. 942+00 TO STA. 948+00

F.A.P. RTE. 308	SECTION 110T	COUNTY ROCK ISLAND	TOTAL SHEETS 51	SHEET NO. 25
CONTRACT NO. 64925				
FED. ROAD DIST. NO. 2 ILLINOIS FED. AID PROJECT				