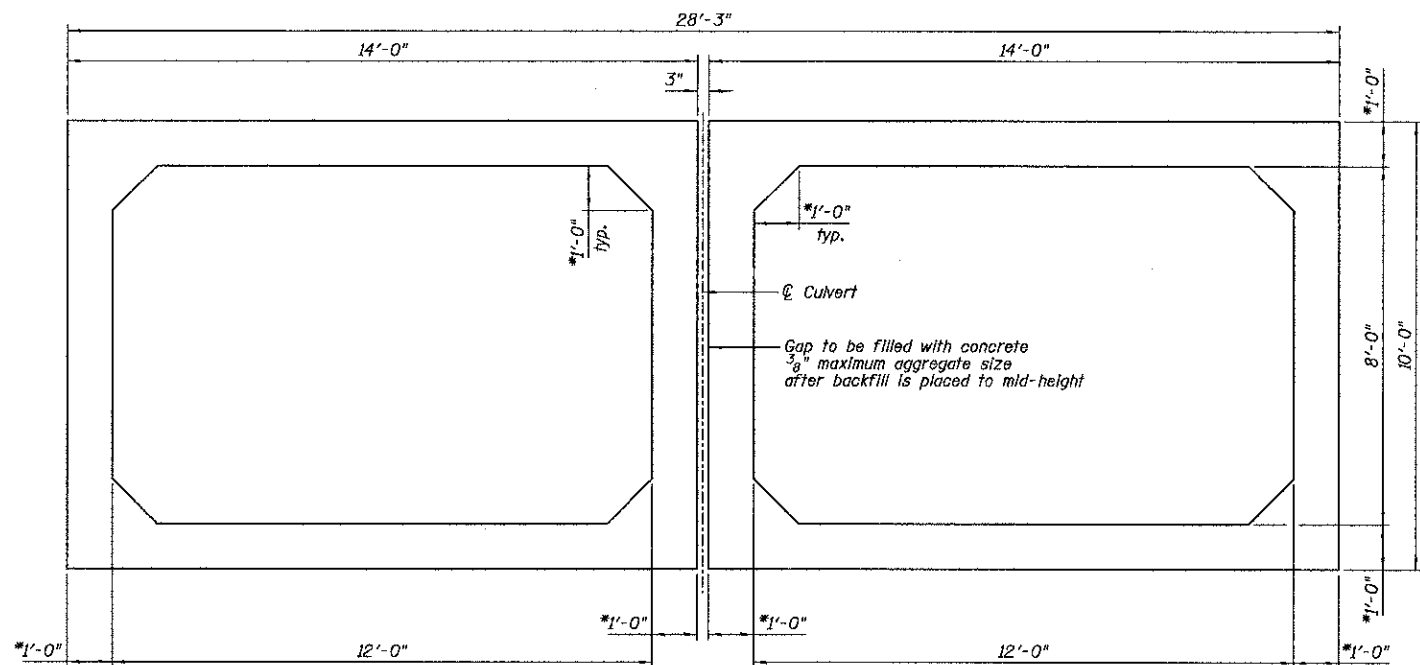
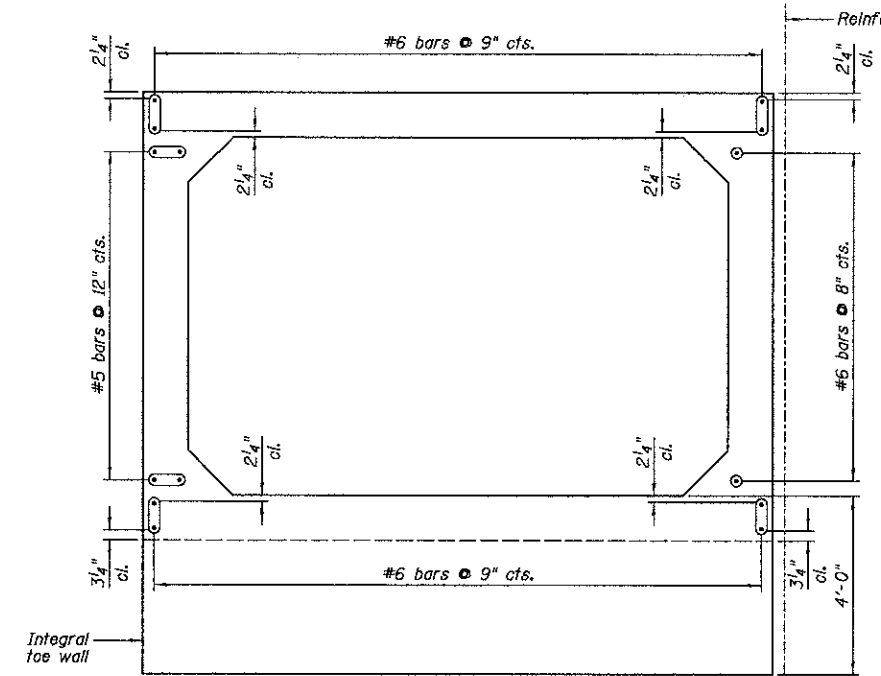


**LONGITUDINAL SECTION**  
(Looking South @ C of Culvert)

Remove unsuitable soil and replace with rock fill. Limits shall extend to 2'-0" outside of the culvert barrel walls



**SECTION THRU PRECAST CONCRETE BARREL**



**PRECAST CONCRETE CULVERT END ELEVATION**

Sections are symmetrical about C of Culvert.

**BILL OF MATERIAL**

Item	Unit	Quantity
Precast Concrete Box Culvert 12'x8' (M273)	Foot	84

**NOTES:**

- 1.) Confirm slab and wall thickness with Precaster.
- 2.) For Cast-In-Place concrete portions, see Sheet B3-B5.
- 3.) B.O.F. denotes Bottom Of Footing.
- 4.) Cost of reinforcing bars extending from precast barrels included with the cost of Precast Concrete Box Culvert (M273).

**Farnsworth GROUP, INC.**  
2709 McGraw Drive  
Bloomington, Illinois 61704  
309/903-9435, 309/903-1571 fax

DESIGNED - DKS	REVISED
CHECKED - SDH	REVISED
DRAWN - DJM/JWK	REVISED
CHECKED - MSW	REVISED
DATE - 07-27-11	

**STATE OF ILLINOIS**  
**DEPARTMENT OF TRANSPORTATION**

**DOUBLE BOX CULVERT LONGITUDINAL SECTION AND PRECAST CONCRETE**  
**STRUCTURE NO. 038-2024**  
SHEET NO. B2 OF 10 SHEETS

F.A.P. RTE.	SECTION	COUNTY	TOTAL SHEETS	SHEET NO.
840	138 BR-3	IROQUOIS	28	14
				CONTRACT NO. 66971
ILLINOIS FED. AID PROJECT				