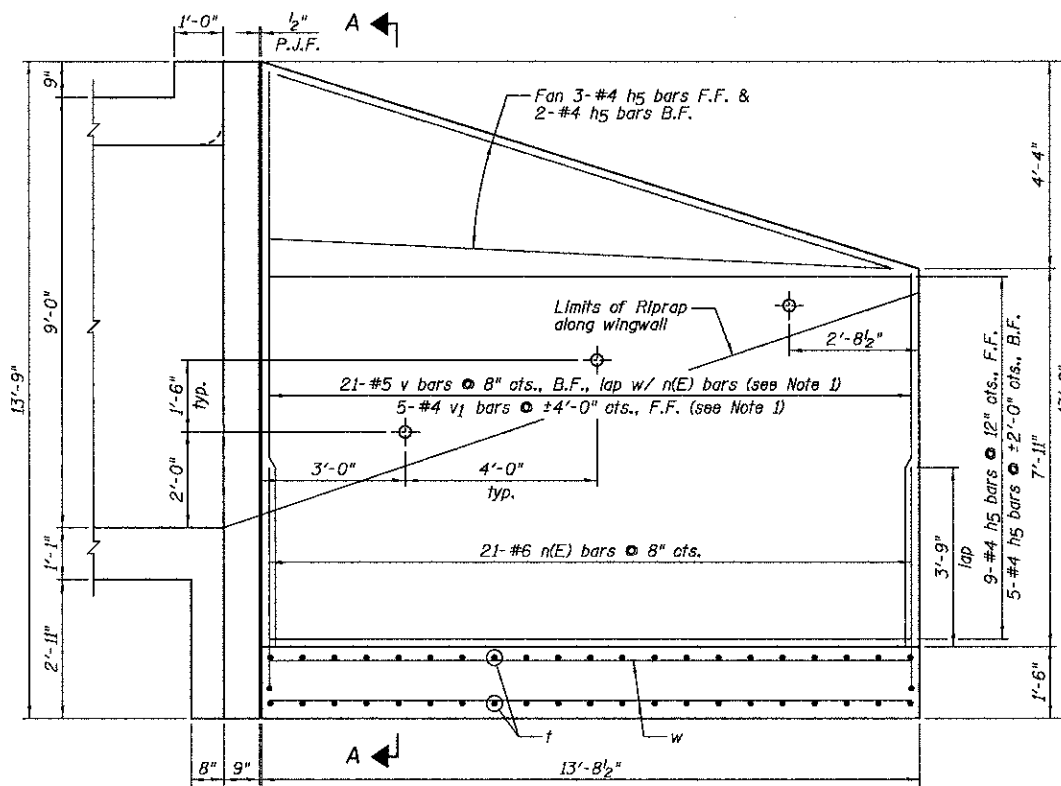
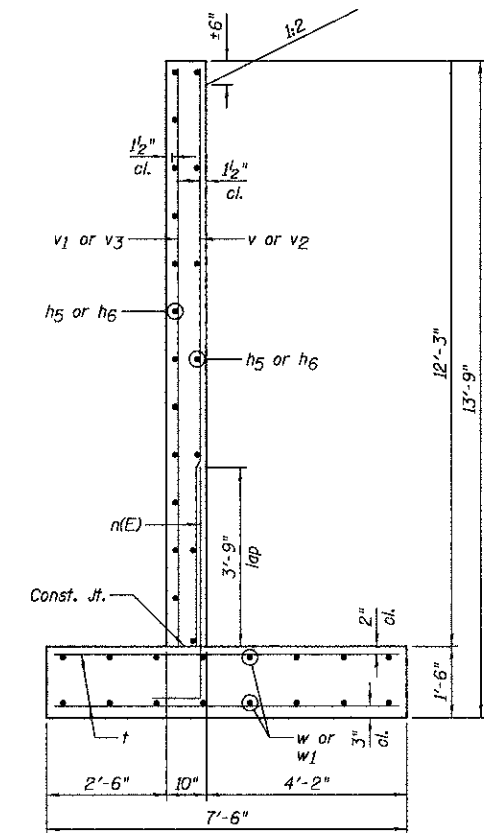


NORTHWEST AND SOUTHEAST WINGWALL ELEVATION

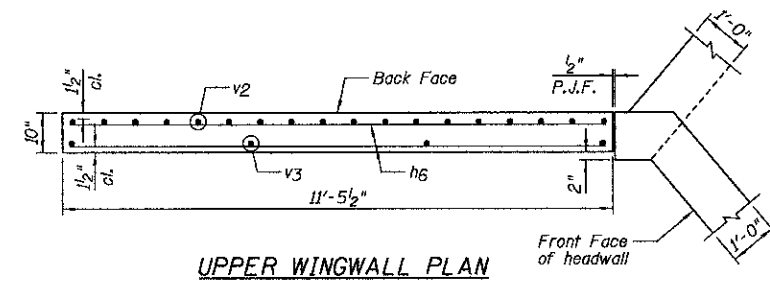


NORTHEAST AND SOUTHWEST WINGWALL ELEVATION

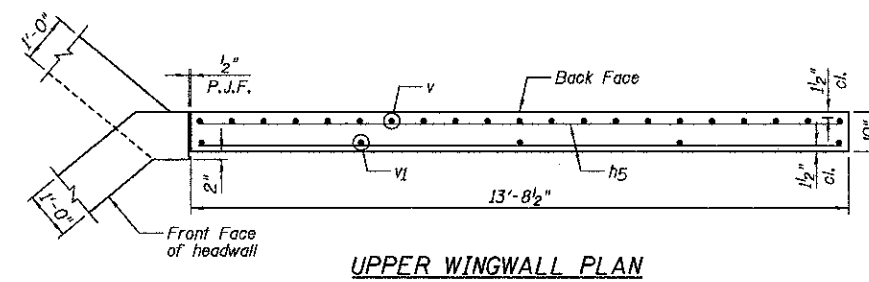


SECTION A-A

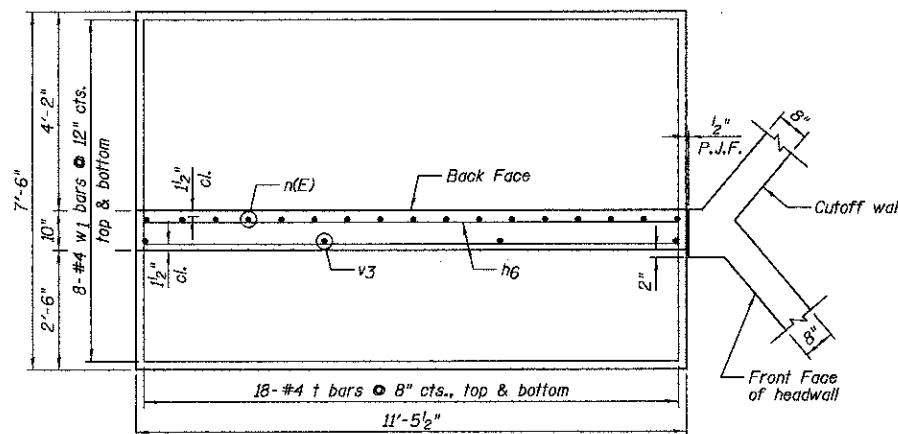
(Calc. max. Soil Pressure 2259 psf)



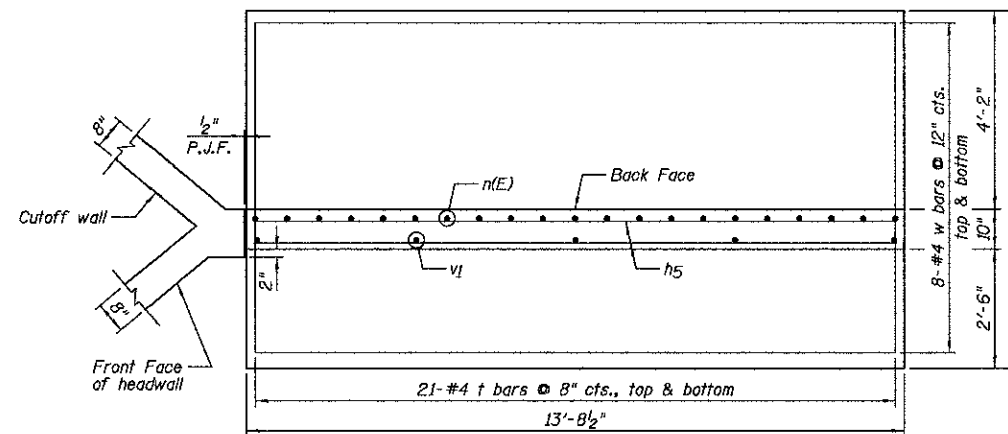
UPPER WINGWALL PLAN



UPPER WINGWALL PLAN



LOWER WINGWALL PLAN



LOWER WINGWALL PLAN

NOTES:

- 1.) Order v, v1, v2 and v3 bars full length, cut according to Bar Cutting Diagram on Sheet B3. Use remainder of bars in opposite wingwall.
- 2.) For Bill of Material, see Sheet B3.
- 3.) F.F. denotes Front Face, and B.F. denotes Back Face.
- 4.) For wingwall details with headwall see Sheet B3.