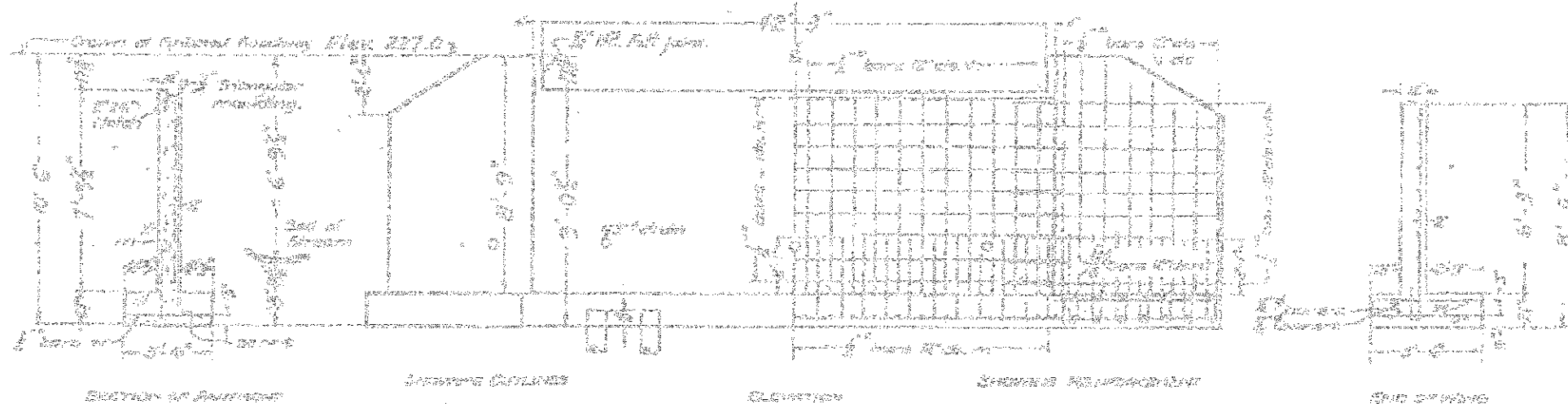


D.M. 1/4 W. to bridge right
 sta. 461.00.
 Elevation: 225.60.
 Existing Structure - I beam span left.
 Rdy. 12 ft. To be removed by bridge contractor.

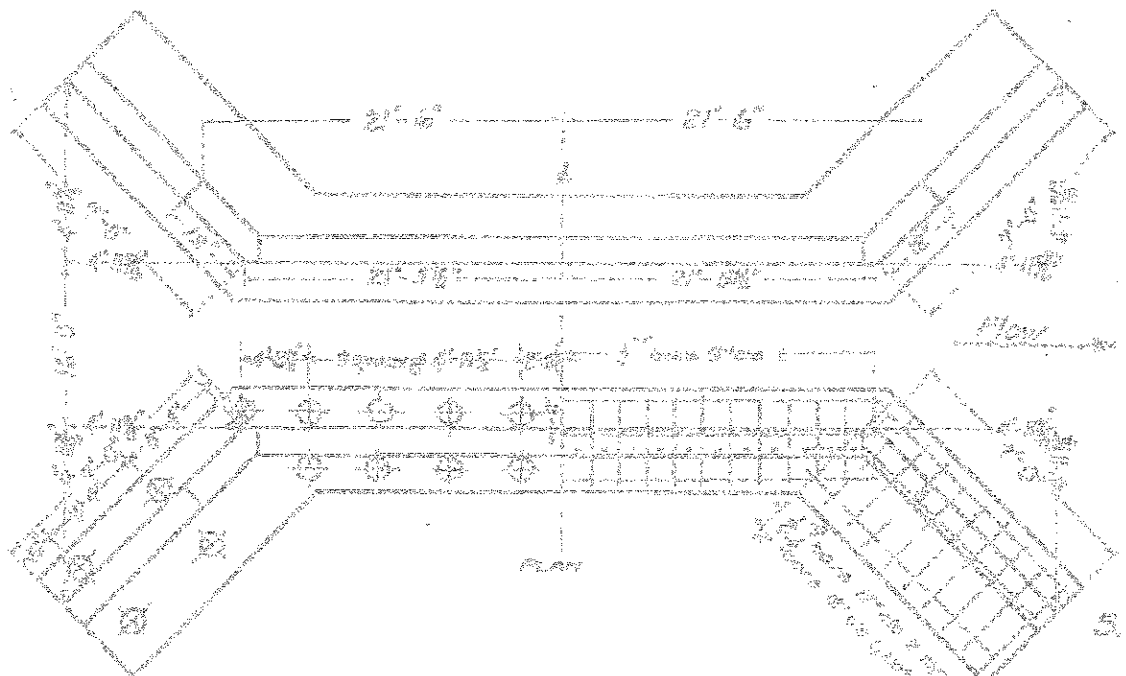
STATE OF ILLINOIS
 DEPARTMENT OF PUBLIC WORKS & BUILDINGS
 DIVISION OF HIGHWAYS

ROUTE NO.	COUNTY	SEC.	SHEETS	TOTAL
49	Iroquois	138B	47	45

REABUTMENTS FOR SLAB BRIDGE
 HEIGHT OVER ALL 10 FEET 6 INCHES



Class A concrete shall be used above top of existing abutment height.
 All reinforcing steel shall be securely attached in place before concrete is poured.
 Class B concrete using S.A. aggregate shall be used for finishing preparation 1:2:3.
 10 Ton wire pile, 10" butt 8" tip sz required.
 Net Length 700 lin. ft.



CALL OF PILING

Cont. No.	Size	Length
1	10"	700'
2	10"	700'
3	10"	700'
4	10"	700'
5	10"	700'
6	10"	700'
7	10"	700'
8	10"	700'
9	10"	700'
10	10"	700'
11	10"	700'
12	10"	700'
13	10"	700'
14	10"	700'
15	10"	700'
16	10"	700'
17	10"	700'
18	10"	700'
19	10"	700'
20	10"	700'
21	10"	700'
22	10"	700'
23	10"	700'
24	10"	700'
25	10"	700'
26	10"	700'
27	10"	700'
28	10"	700'
29	10"	700'
30	10"	700'
31	10"	700'
32	10"	700'
33	10"	700'
34	10"	700'
35	10"	700'
36	10"	700'
37	10"	700'
38	10"	700'
39	10"	700'
40	10"	700'
41	10"	700'
42	10"	700'
43	10"	700'
44	10"	700'
45	10"	700'
46	10"	700'
47	10"	700'
48	10"	700'
49	10"	700'
50	10"	700'

DESIGNED	DKS
CHECKED	SDH
DRAWN	DJM/JWK
CHECKED	MSW

[Handwritten signatures and dates]

S.B.I. ROUTE 49 - SEC. 138-B
 IROQUOIS COUNTY
 STA. 412 + 24

FOR INFORMATIONAL
 USE ONLY