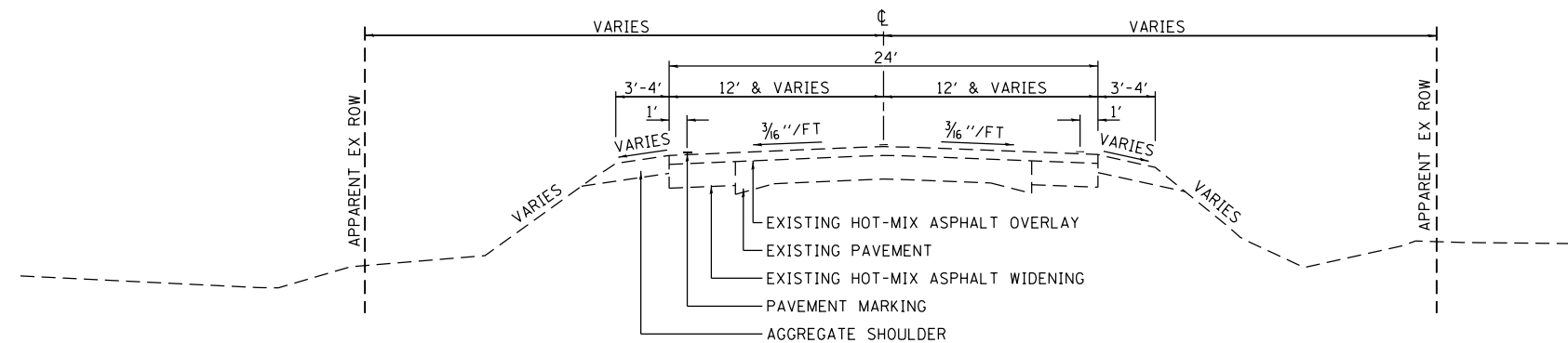
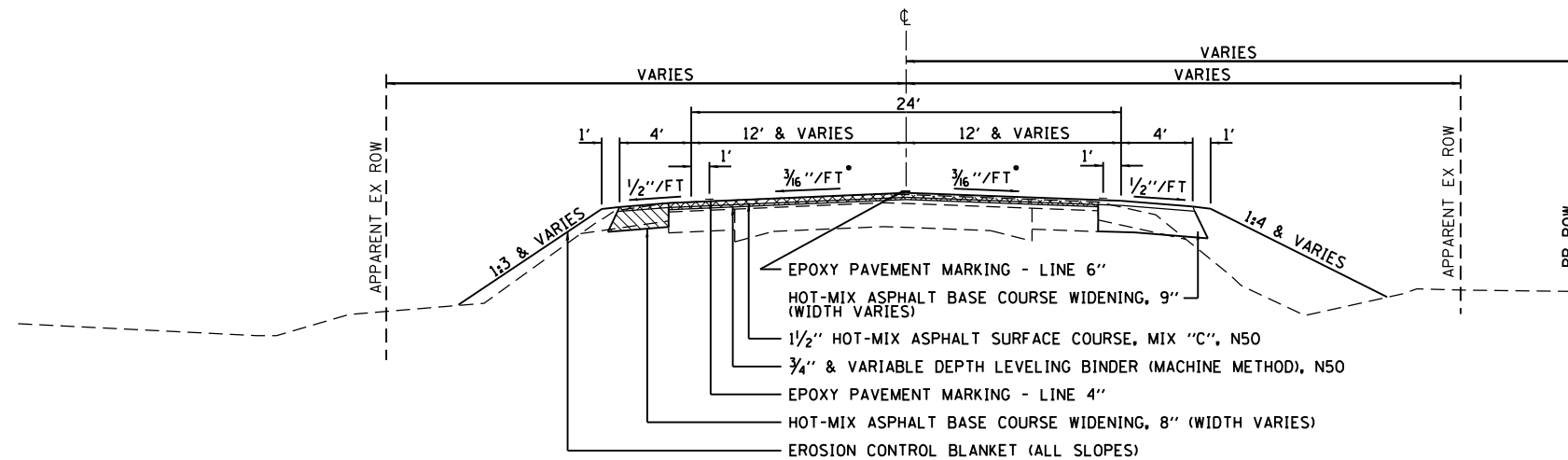


MIXTURES TABLE

	HMA SHOULDERS, BINDER, BASE COURSE & FLEX CONNECTOR	HMA LEVEL BINDER	HMA SURFACE
PG GRADE	PG 64-22	PG 64-22	PG 64-22
DESIGN AIR VOIDS	4.0% @ N50	4.0% @ N50	4.0% @ N50
MIXTURE COMPOSITION	IL 19.0	IL 9.5	IL 9.5
FRICTION AGGREGATE	-	-	MIXTURE C
DENSITY TEST METHOD	CORES	SATISFACTION OF ENGINEER	CORES

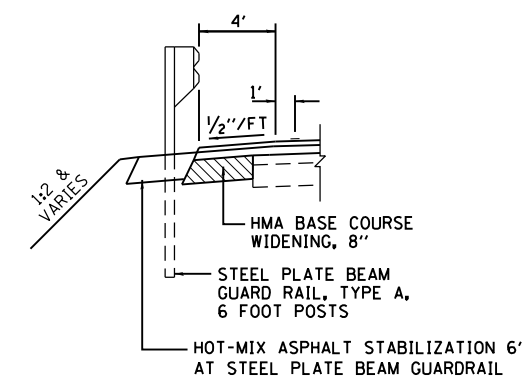


EXISTING TYPICAL CROSS SECTION
F.A.P. 693 (IL 9)



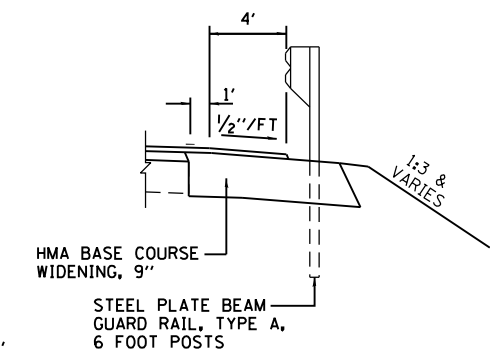
PROPOSED TYPICAL CROSS SECTION ①
F.A.P. 693 (IL 9)
STA 858+15.00 TO STA 860+08.83
STA 865+24.73 TO STA 866+20.00

HMA SURFACE REMOVAL, VARIABLE DEPTH



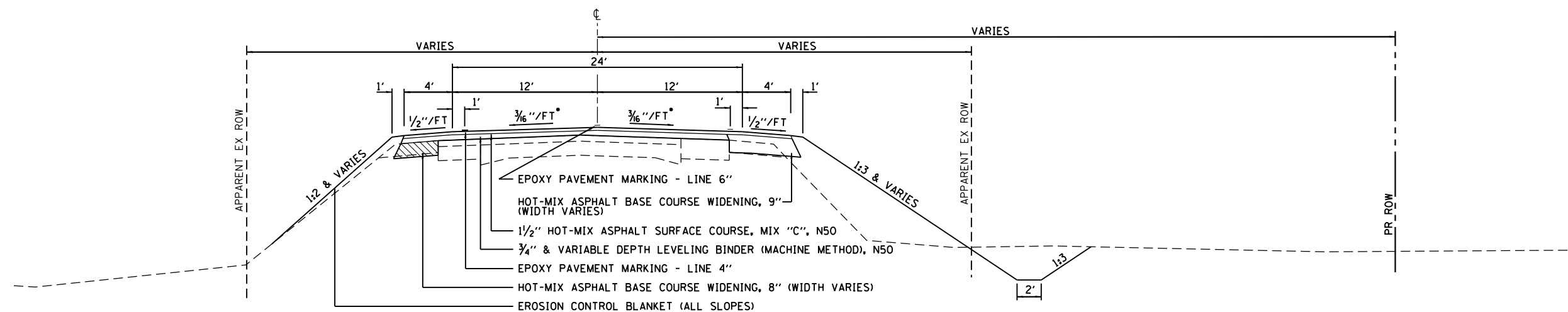
DETAIL AT GUARDRAIL

F.A.P. 693 (IL 9)
STA 860+17.60 LT TO STA 861+61.35 LT
STA 864+20.00 LT TO STA 865+08.43 LT



DETAIL AT GUARDRAIL

F.A.P. 693 (IL 9)
STA 860+20.00 RT TO STA 861+61.35 RT



PROPOSED TYPICAL CROSS SECTION ②
F.A.P. 693 (IL 9)
STA 860+08.83 TO STA 861+39.75
STA 864+20.00 TO STA 865+24.73

• CROSS SLOPE VARIES, SEE CROSS SECTIONS FOR CROSS SLOPE



USER NAME = dmeyer	DESIGNED - JJ0	REVISED -
PLOT SCALE = 10.0000' / in.	DRAWN - JJ0	REVISED -
PLOT DATE = 8/13/2012	CHECKED - JML	REVISED -
	DATE - 08/10/12	REVISED -

STATE OF ILLINOIS
DEPARTMENT OF TRANSPORTATION

TYPICAL SECTIONS

SCALE: SHEET OF SHEETS STA. TO STA.

F.A.P. RTE.	SECTION	COUNTY	TOTAL SHEETS	SHEET NO.
693	19B	FORD	61	9
CONTRACT NO. 66A12				
ILLINOIS FED. AID PROJECT				