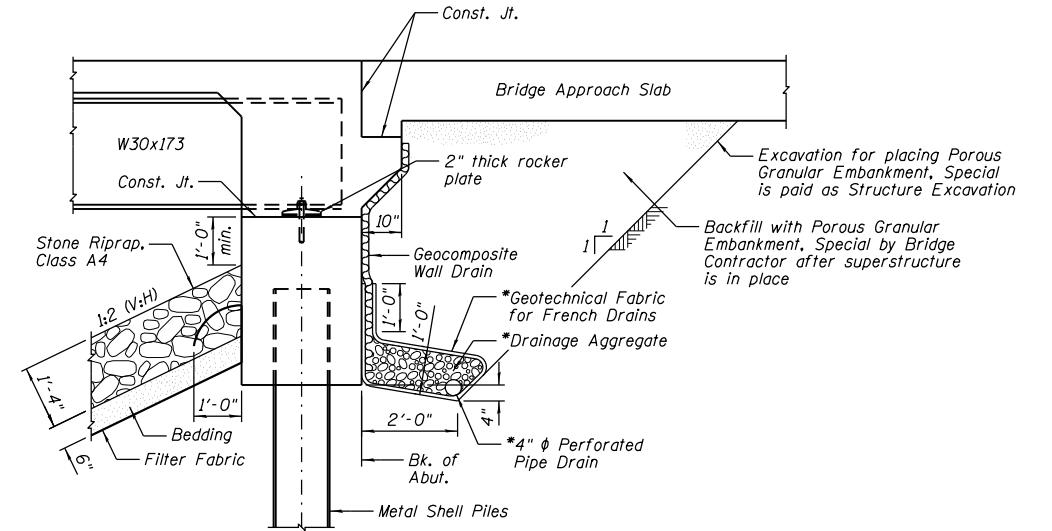


TOTAL BILL OF MATERIAL

ITEM	UNIT	SUPER	SUB	TOTAL
Stone Riprap, Class A4	Sq. Yd.		729	729
Filter Fabric	Sq. Yd.		729	729
Removal of Existing Structures	Each	1		1
Structure Excavation	Cu. Yd.		172	172
Concrete Structures	Cu. Yd.	20.8	30.0	50.8
Concrete Superstructure	Cu. Yd.	214.8		214.8
Bridge Deck Grooving	Sq. Yd.	451		451
Protective Coat	Sq. Yd.	574		574
Furnishing and Erecting Structural Steel	L. Sum	1		1
Stud Shear Connectors	Each	1,530		1,530
Reinforcement Bars, Epoxy Coated	Pound	48,440	3,860	52,300
Bar Splacers	Each	532	20	552
Furnishing Metal Shell Piles 14" x 0.312"	Foot		290	290
Driving Piles	Foot		290	290
Test Pile Metal Shells	Each		2	2
Pile Shoes	Each		12	12
Name Plates	Each	1		1
Anchor Bolts, 1"	Each	24		24
Geocomposite Wall Drain	Sq. Yd.		60	60
Asbestos Bearing Pad Removal	Each	14		14
Temporary Sheet Piling	Sq. Ft.		574	574
Pipe Underdrains for Structures 4"	Foot		164	164
Temporary Soil Retention System	Sq. Ft.		190	190
Porous Granular Embankment, Special	Cu. Yd.		102	102

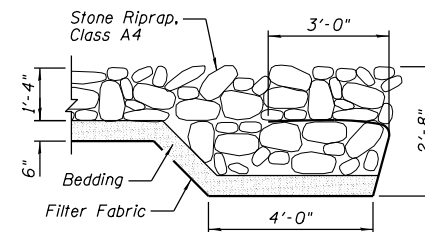


SECTION THRU WEST ABUTMENT
(Similar for East Abutment)

- NOTES:**
- 1.) *Included in the cost of Pipe Underdrains for Structures 4".
 - 2.) All drainage system components shall extend to 2'-0" from the end of each wingwall except an outlet pipe shall extend until intersecting with the side slopes. The pipes shall drain into concrete headwalls. (See Article 601.05 of the Standard Specifications and Highway Standard 601101)

GENERAL NOTES:

- 1.) Fasteners shall be ASTM A325 Type 1, mechanically galvanized bolts (in painted areas and ASTM A325 Type 3 in unpainted areas). Bolts $\frac{3}{4}$ in. ϕ , holes $\frac{15}{16}$ in. ϕ , unless otherwise noted.
- 2.) Calculated weight of Structural Steel = 81,930 lbs.
- 3.) All structural steel shall be AASHTO M270 Grade 50W.
- 4.) No field welding is permitted except as specified in the contract documents.
- 5.) Reinforcement bars designated (E) shall be epoxy coated.
- 6.) If the Contractor elects to use cantilever forming brackets on the exterior beams, the brackets shall be placed at the same locations as required for the hardwood blocks in Article 503.06(b) of the Standard Specifications. If additional cantilever forming brackets are required, hardwood blocking shall be wedged between the exterior and first interior beam at each of these additional bracket locations.
- 7.) Structural steel shall only be painted for a distance equal to the depth of embedment into the concrete cap plus 3 in. Painted areas shall be primed in the shop with a Department approved zinc rich primer. Field painting will not be required.
- 8.) Layout of the slope protection system may be varied to suit ground conditions in the field as directed by the Engineer.
- 9.) Slipforming of parapets is not allowed.
- 10.) The Contractor is advised that the existing structure contains members that are in a deteriorated condition with reduced load carrying capacity. It is the Contractor's responsibility to account for the condition of the existing structure when developing construction procedures for the complete or partial removal, or replacement of the structure.



SECTION A-A

STATION 862+13.00
BUILT 20__ BY
STATE OF ILLINOIS
F.A.P. RT. 693 - SEC. 19BR
LOADING HL-93
STRUCTURE NO. 027-0101

NAME PLATE
See Std. 515001

DESIGNED - TCR	REVISED
CHECKED - JML	REVISED
DRAWN - JWK	REVISED
DATE - 8/10/12	CHECKED - MSW
	REVISED

F.A.P. RTE.	SECTION	COUNTY	TOTAL SHEETS	SHEET NO.
693	19BR	FORD	61	24
CONTRACT NO. 66A12				
ILLINOIS FED. AID PROJECT				