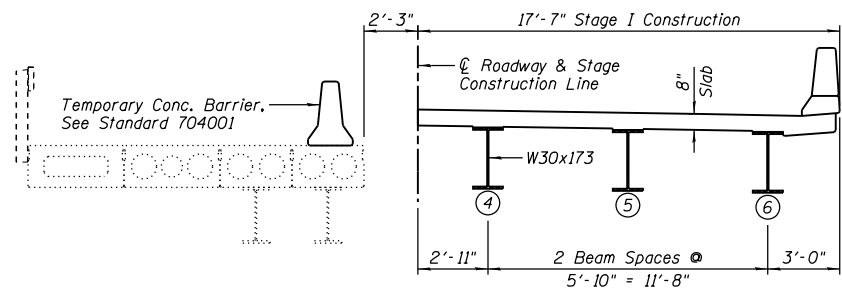
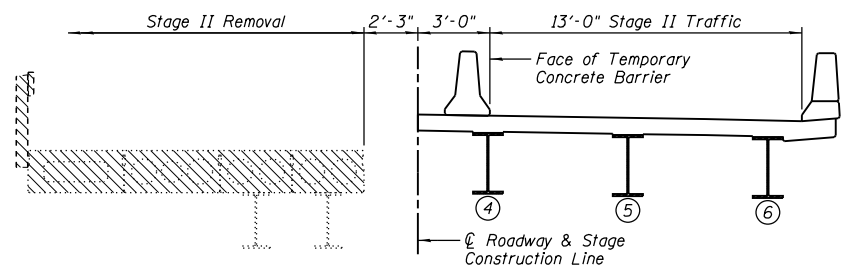


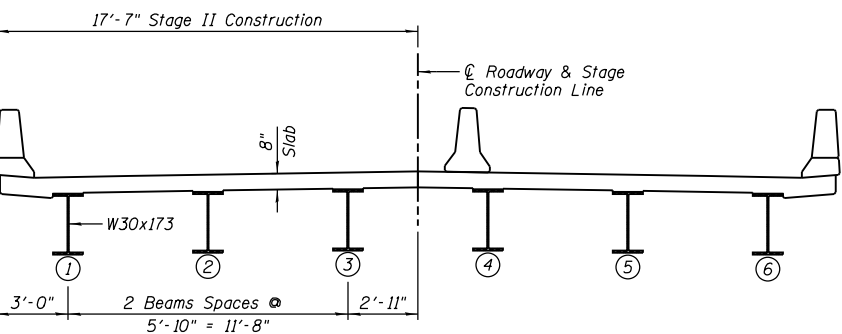
STAGE I REMOVAL
(Looking West @ \odot of Bridge)



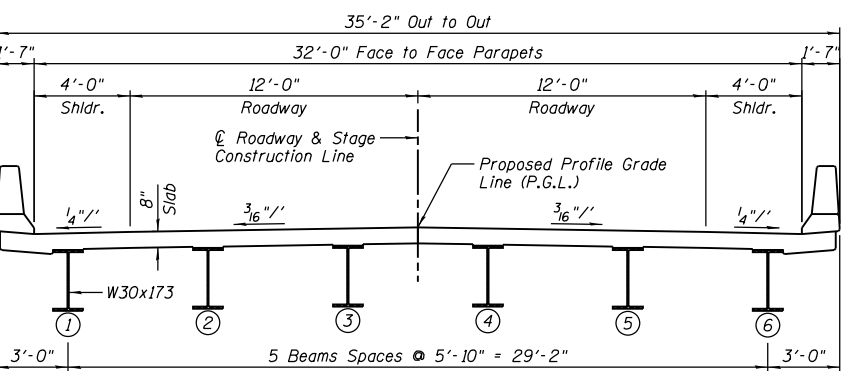
STAGE I CONSTRUCTION
(Looking West @ \odot of Bridge)



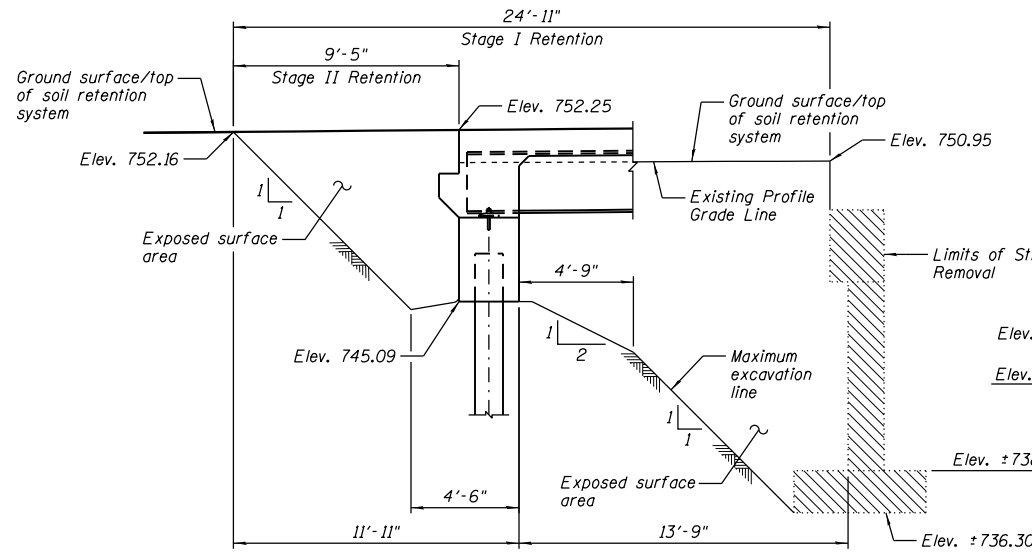
STAGE II REMOVAL
(Looking West @ \odot of Bridge)



STAGE II CONSTRUCTION
(Looking West @ \odot of Bridge)



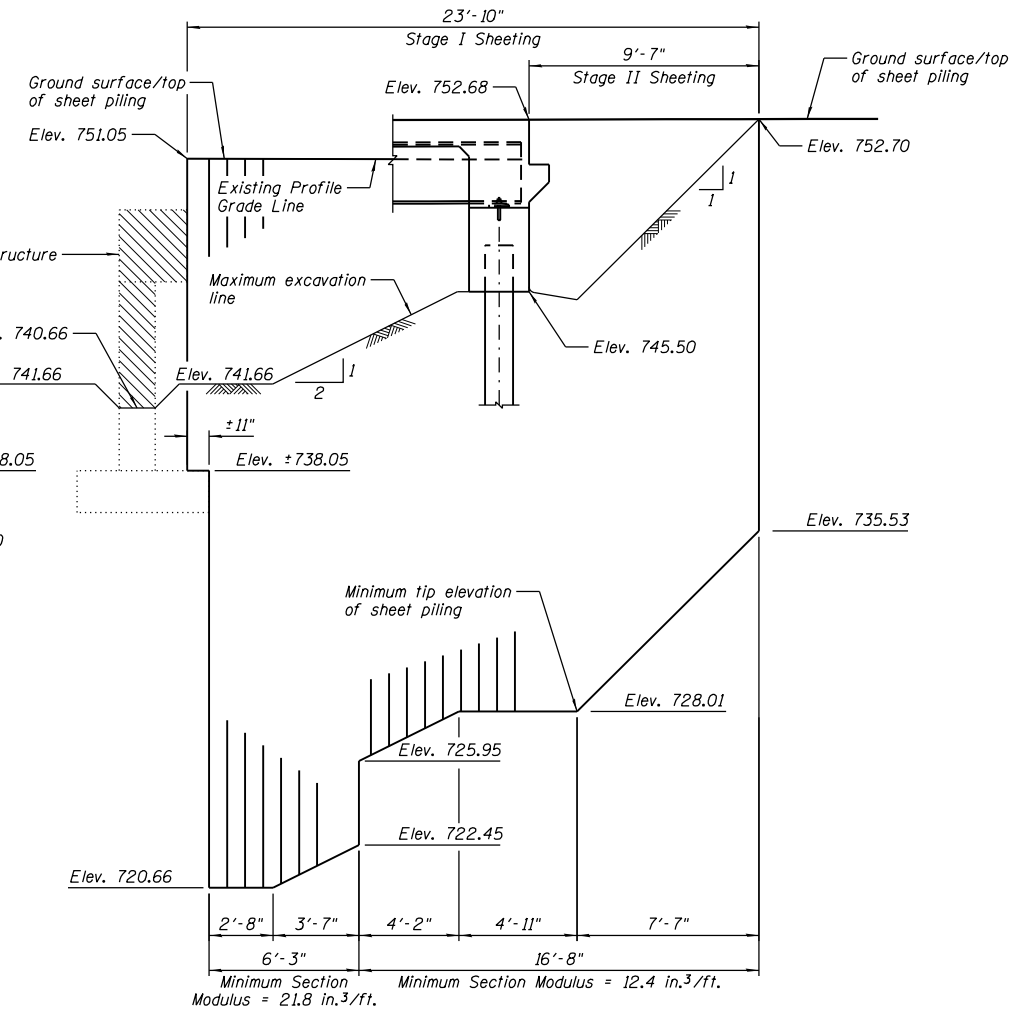
CROSS SECTION
(Looking West @ \odot of Bridge)



EAST ABUTMENT TEMPORARY SOIL RETENTION SYSTEM

NOTE:

A cantilever sheet piling design does not appear feasible and additional members or other retention systems may be necessary. The Contractor shall submit a temporary soil retention system design including plan details and calculations for review and acceptance by the Engineer.



WEST ABUTMENT TEMPORARY SHEET PILING

NOTES:

- 1.) If the Contractor chooses to alter the temporary cantilevered sheet piling design requirements shown on the plans, a design submittal including plan details and calculations will be required for review and acceptance by the Engineer.
- 2.) The Contractor shall connect the first sheet to the existing abutment wall to ensure stability of sheets driven to the top of the existing footing. This connection shall be reviewed and accepted by the Engineer and included in the cost for Temporary Sheet Piling.

BILL OF MATERIAL

Item	Unit	Total
Temporary Sheet Piling	Sq. Ft.	574
Temporary Soil Retention System	Sq. Ft.	190

NOTES:

- 1.) Removal of the existing bituminous wearing surface shall be included with Removal of Existing Structures.
- 2.) See Sheet B4 for Temporary Concrete Barrier (Standard 704001). See roadway plans for quantity.