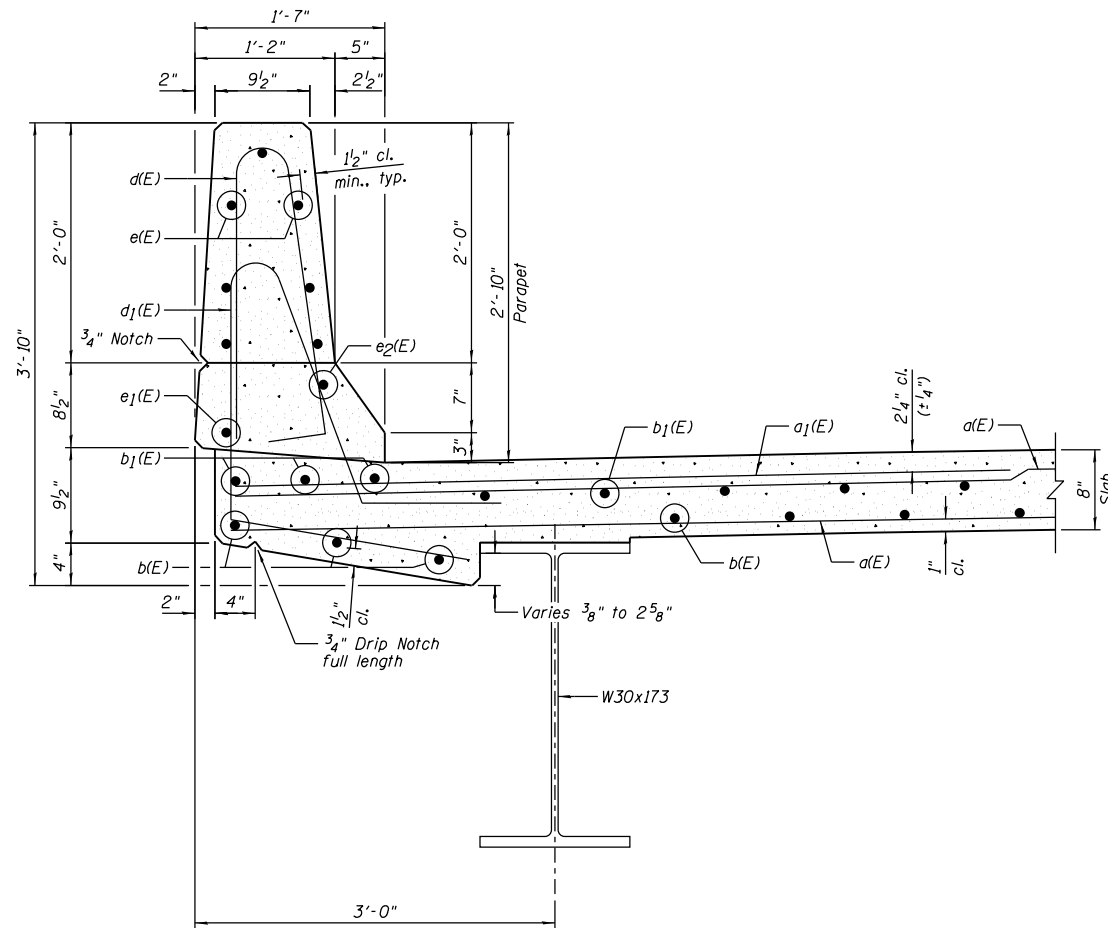


INSIDE ELEVATION OF PARAPET

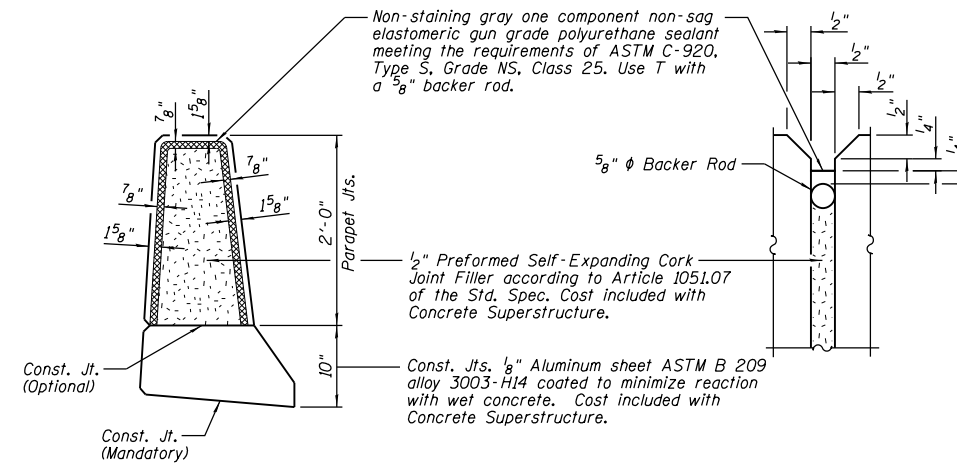
BAR LAP	
#4	2'-0"
#8	5'-2"

**SUPERSTRUCTURE
BILL OF MATERIAL**

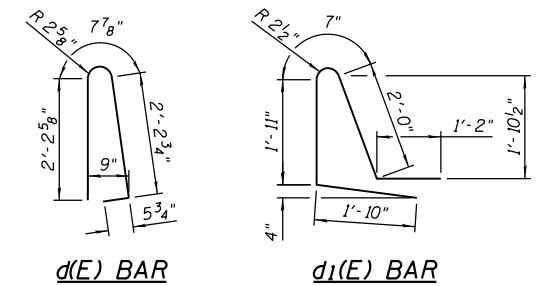
Bar	No.	Size	Length	Shape
a(E)	436	#5	17'-1"	—
a1(E)	256	#6	6'-6"	—
b(E)	104	#5	20'-6"	—
b1(E)	114	#5	26'-6"	—
d(E)	164	#5	5'-7"	┘
d1(E)	164	#5	7'-6"	┘
e(E)	56	#4	18'-3"	—
e1(E)	8	#4	20'-1"	—
e2(E)	6	#8	28'-2"	—
m(E)	8	#6	2'-7"	—
m1(E)	8	#6	5'-6"	—
m2(E)	24	#6	8'-0"	—
m3(E)	20	#6	17'-3"	—
s(E)	72	#5	6'-10"	┘
s1(E)	64	#4	9'-2"	┘
v(E)	72	#5	3'-10"	┘
Item		Unit	Quantity	
Concrete Superstructure		Cu. Yd.	109.0	
Reinforcement Bars, Epoxy Coated		Pound	21,220	



SECTION THRU PARAPET

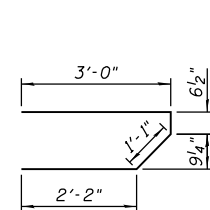


PARAPET JOINT DETAILS



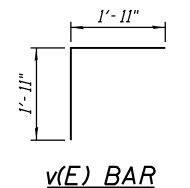
d(E) BAR

d1(E) BAR



s(E) BAR

s1(E) BAR



v(E) BAR

NOTES:

- 1.) B.F. denotes Back Face and F.F. denotes Front Face.
- 2.) Inside Elevation of Parapet view is exaggerated vertically to show reinforcement.
- 3.) Bars indicated thus 1x4- #4 etc. indicates 1 line of bars with 4 lengths per line.

DESIGNED - TCR	REVISED
CHECKED - JML	REVISED
DRAWN - JWK	REVISED
DATE - 8/10/12	REVISED
CHECKED - MSW	REVISED

F.A.P. RTE.	SECTION	COUNTY	TOTAL SHEETS	SHEET NO.
693	19BR	FORD	61	31
CONTRACT NO. 66A12				