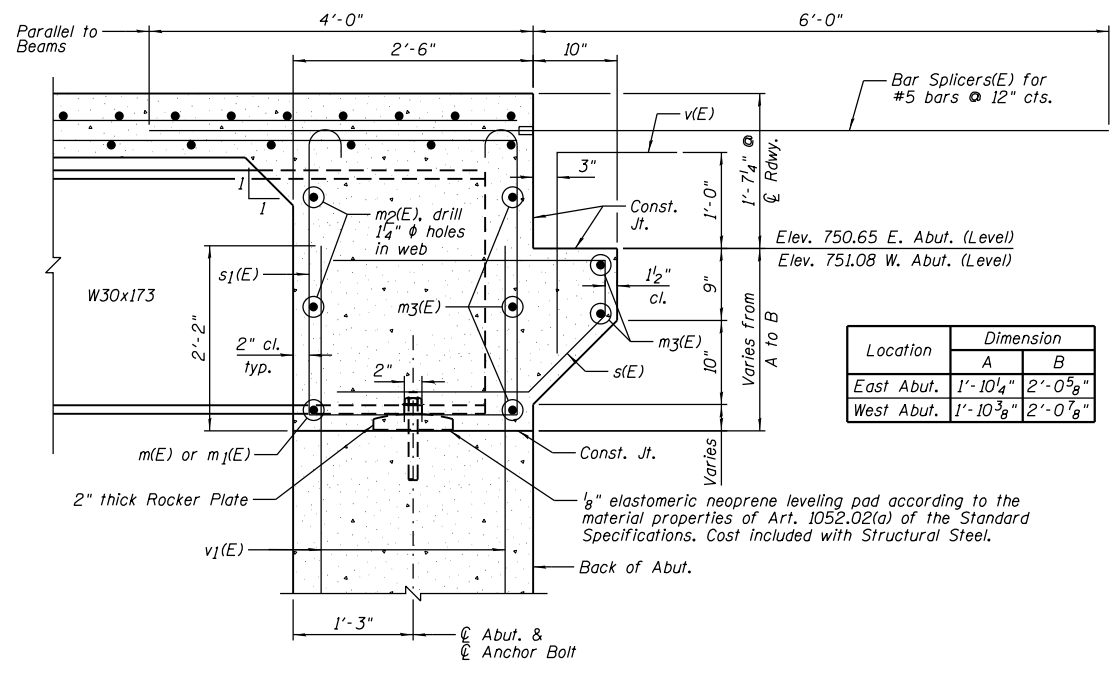
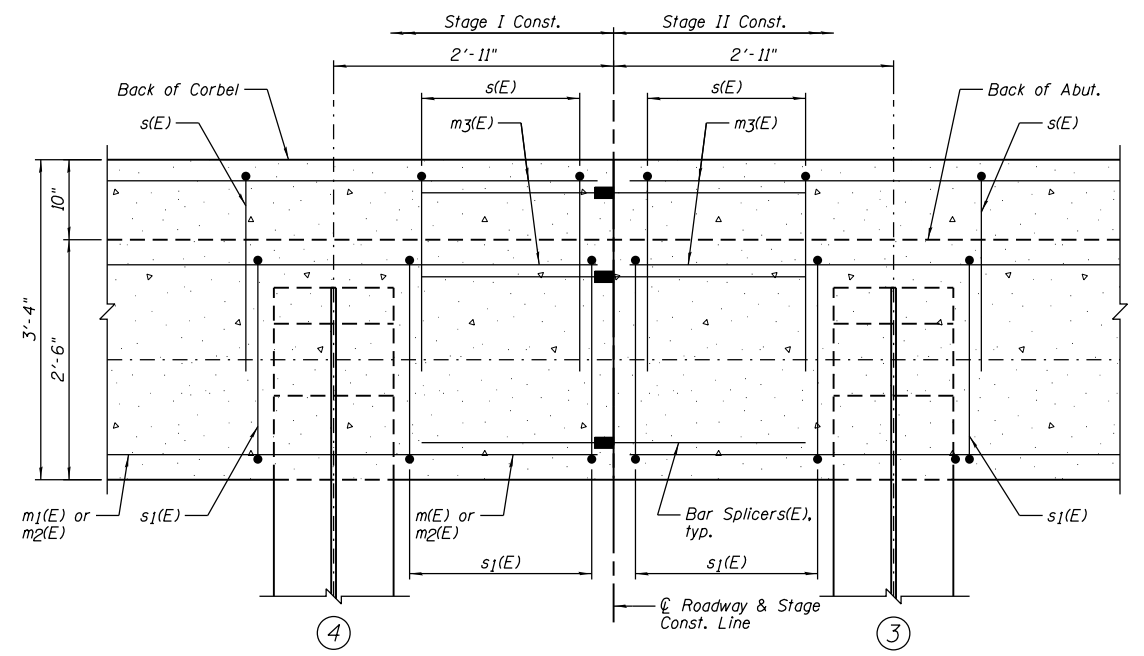


**ELEVATION OF DIAPHRAGM AT EAST ABUTMENT**  
(Similar for West Abutment)

BAR LAP  
#6 - 3'-4"



**SECTION A-A**



**SECTION B-B**

- NOTES:**
- 1.) Reinforcement bars in diaphragm are billed with Superstructure on Sheet B9.
  - 2.) Concrete in diaphragm is included with Concrete Superstructure on Sheet B9.
  - 3.) For details of bars s(E) and s1(E), see Sheet B9.
  - 4.) See Sheet B15 for Fixed Bearing Details.
  - 5.) F.F. denotes Front Face.
  - 6.) See Sheet B19 for Bar Splicer Details.
  - 7.) Bars indicated thus 2x3-#6 indicates 2 lines of bars with 3 lengths per line.

**Farnsworth GROUP, INC.**  
2709 McGraw Drive  
Bloomington, Illinois 61704  
309/663-8435, 309/663-1571 fax

DESIGNED - TCR	REVISION
CHECKED - JML	REVISION
DRAWN - JWK	REVISION
CHECKED - MSW	REVISION
DATE - 8/10/12	

**STATE OF ILLINOIS DEPARTMENT OF TRANSPORTATION**

**DIAPHRAGM DETAILS STRUCTURE NO. 027-0101**

SHEET NO. B10 OF 30 SHEETS

F.A.P. RTE.	SECTION	COUNTY	TOTAL SHEETS	SHEET NO.
693	19BR	FORD	61	32
CONTRACT NO. 66A12				

ILLINOIS FED. AID PROJECT