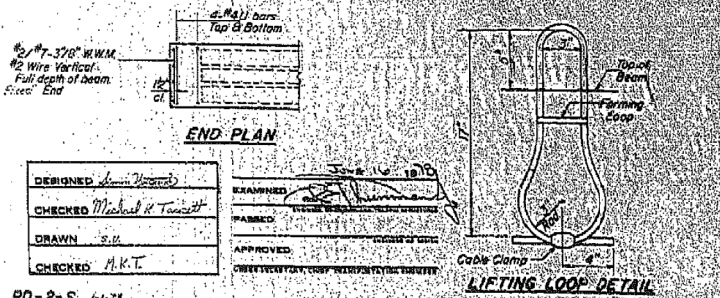
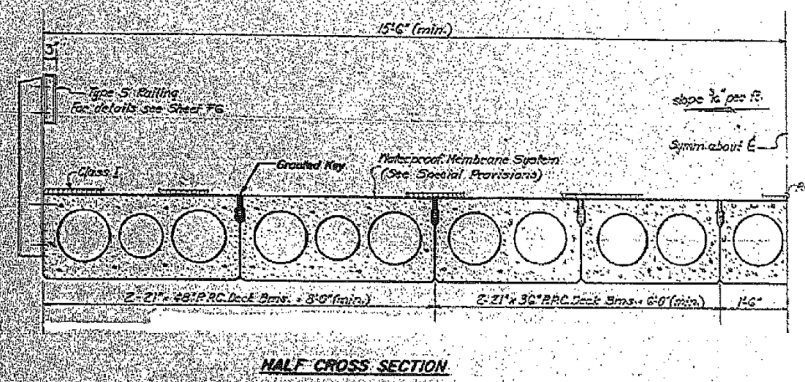
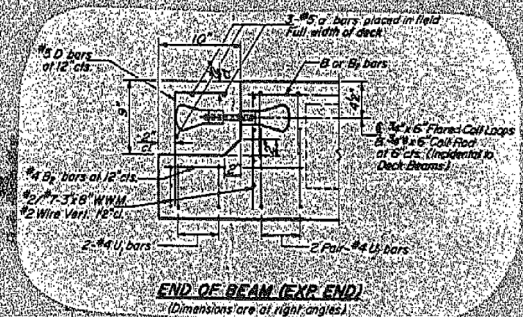
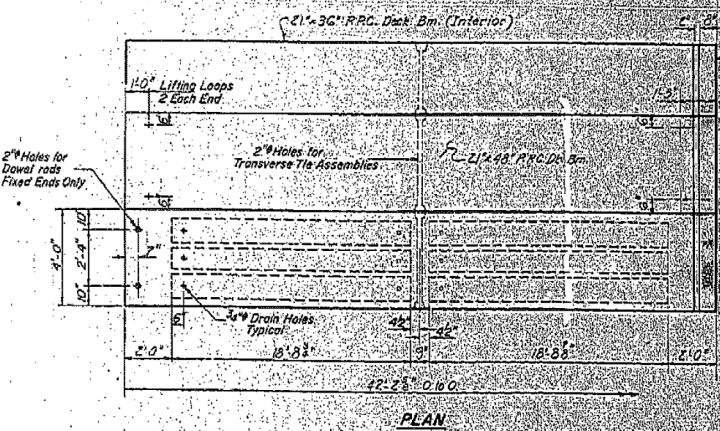
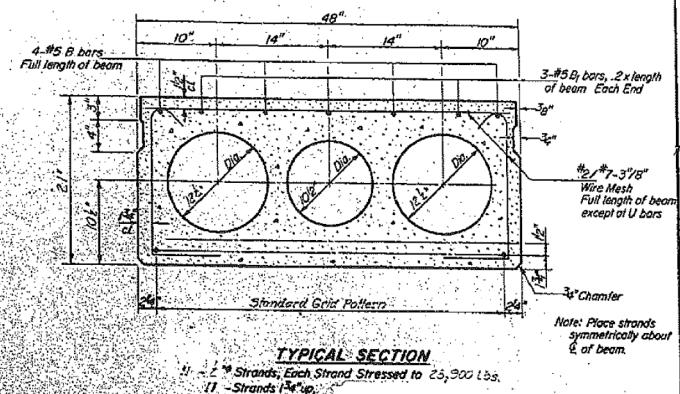
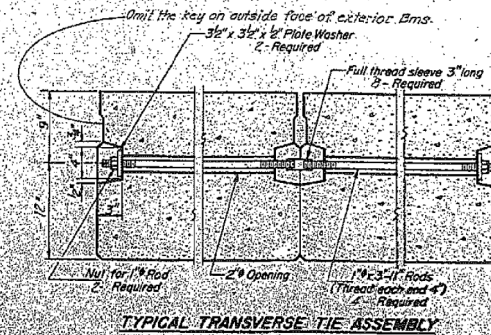
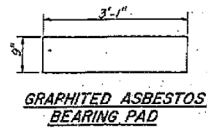
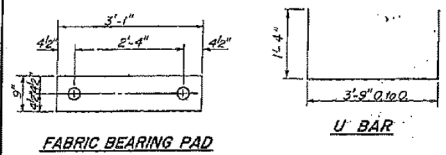


STATE OF ILLINOIS
DEPARTMENT OF TRANSPORTATION

PROJECT NO.	SECTION	SHEET NO.	TOTAL SHEETS
1910015	BRIDGE	42	29
SHEET NO. 3 OF SHEETS			



DESIGNED: J. J. [Signature]	REVISIONS:
CHECKED: Michael H. [Signature]	1. [Signature] 10/10
DRAWN: S. G.	2. [Signature] 10/10
CHECKED: M.K.T.	3. [Signature] 10/10
PD-2-5 1-1-21	

NOTES

1. Prestressing steel shall be non-galvanized high strength, stress-relieved 7-wire strand Grade 270. The nominal diameter shall be 7/16" and the nominal cross-sectional area shall be 2.33 sq. in. Lifting loops shall be 1/2" diameter, 6 x 25 class one rope with fiber core and shall have a minimum ultimate tensile strength of 25,000 lbs.

2. The P.P.C. deck on the transverse tie assembly shall be lightened for a snug fit and the threads on the deck tie shall be secured with a nut on the outside and shall be filled with grout after transverse tie assembly is in place.

3. Construction shall be checked with a very dry mix of 2:1 sand and P.C. mortar. After beams have been erected, holes for the dowel anchors shall be drilled into the sub-structure and the anchor dowels shall be grouted in place.

4. Cost of reinforcement and accessories cost into the beam of bearing pad.

5. Cost of providing longitudinal shear keys is included in unit price bid for Precast Prestressed Concrete Deck Beams.

BILL OF MATERIAL

Bar	No.	Size	Length	Slope
1	2	#5	31'-6"	
2	2	#5	31'-6"	
3	2	#5	31'-6"	
4	2	#5	31'-6"	
5	2	#5	31'-6"	
6	2	#5	31'-6"	
7	2	#5	31'-6"	
8	2	#5	31'-6"	
9	2	#5	31'-6"	
10	2	#5	31'-6"	
11	2	#5	31'-6"	
12	2	#5	31'-6"	
13	2	#5	31'-6"	
14	2	#5	31'-6"	
15	2	#5	31'-6"	
16	2	#5	31'-6"	
17	2	#5	31'-6"	
18	2	#5	31'-6"	
19	2	#5	31'-6"	
20	2	#5	31'-6"	
21	2	#5	31'-6"	
22	2	#5	31'-6"	
23	2	#5	31'-6"	
24	2	#5	31'-6"	
25	2	#5	31'-6"	
26	2	#5	31'-6"	
27	2	#5	31'-6"	
28	2	#5	31'-6"	
29	2	#5	31'-6"	
30	2	#5	31'-6"	
31	2	#5	31'-6"	
32	2	#5	31'-6"	
33	2	#5	31'-6"	
34	2	#5	31'-6"	
35	2	#5	31'-6"	
36	2	#5	31'-6"	
37	2	#5	31'-6"	
38	2	#5	31'-6"	
39	2	#5	31'-6"	
40	2	#5	31'-6"	
41	2	#5	31'-6"	
42	2	#5	31'-6"	
43	2	#5	31'-6"	
44	2	#5	31'-6"	
45	2	#5	31'-6"	
46	2	#5	31'-6"	
47	2	#5	31'-6"	
48	2	#5	31'-6"	
49	2	#5	31'-6"	
50	2	#5	31'-6"	
51	2	#5	31'-6"	
52	2	#5	31'-6"	
53	2	#5	31'-6"	
54	2	#5	31'-6"	
55	2	#5	31'-6"	
56	2	#5	31'-6"	
57	2	#5	31'-6"	
58	2	#5	31'-6"	
59	2	#5	31'-6"	
60	2	#5	31'-6"	
61	2	#5	31'-6"	
62	2	#5	31'-6"	
63	2	#5	31'-6"	
64	2	#5	31'-6"	
65	2	#5	31'-6"	
66	2	#5	31'-6"	
67	2	#5	31'-6"	
68	2	#5	31'-6"	
69	2	#5	31'-6"	
70	2	#5	31'-6"	
71	2	#5	31'-6"	
72	2	#5	31'-6"	
73	2	#5	31'-6"	
74	2	#5	31'-6"	
75	2	#5	31'-6"	
76	2	#5	31'-6"	
77	2	#5	31'-6"	
78	2	#5	31'-6"	
79	2	#5	31'-6"	
80	2	#5	31'-6"	
81	2	#5	31'-6"	
82	2	#5	31'-6"	
83	2	#5	31'-6"	
84	2	#5	31'-6"	
85	2	#5	31'-6"	
86	2	#5	31'-6"	
87	2	#5	31'-6"	
88	2	#5	31'-6"	
89	2	#5	31'-6"	
90	2	#5	31'-6"	
91	2	#5	31'-6"	
92	2	#5	31'-6"	
93	2	#5	31'-6"	
94	2	#5	31'-6"	
95	2	#5	31'-6"	
96	2	#5	31'-6"	
97	2	#5	31'-6"	
98	2	#5	31'-6"	
99	2	#5	31'-6"	
100	2	#5	31'-6"	

SUPERSTRUCTURE-21'x48" P.P.C. DECK BEAM
I.A. RT. 693 SEC. 13 BR. J
FORD COUNTY
STA. 662+00.00

FOR INFORMATIONAL
USE ONLY

DESIGNED - TCR	REVISION
CHECKED - JML	REVISION
DRAWN - JWK	REVISION
CHECKED - MSW	REVISION
DATE - 8/10/12	

F.A.P. RTE.	SECTION	COUNTY	TOTAL SHEETS	SHEET NO.
693	19BR	FORD	61	47
CONTRACT NO. 66A12				
ILLINOIS FED. AID PROJECT				