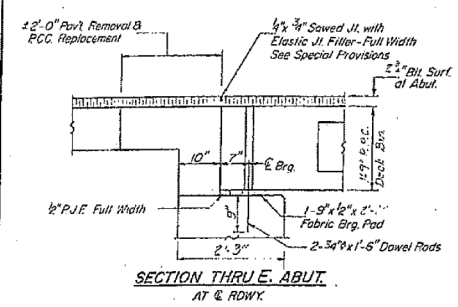
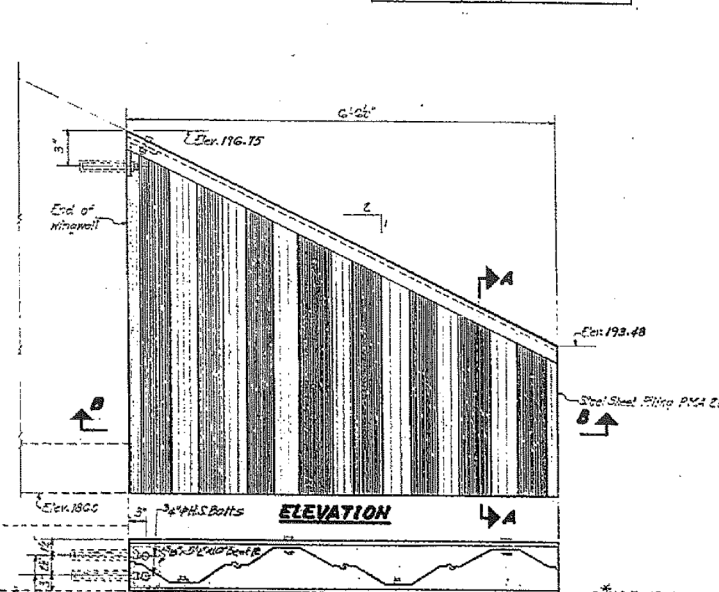
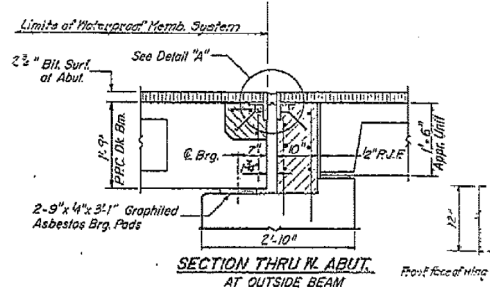
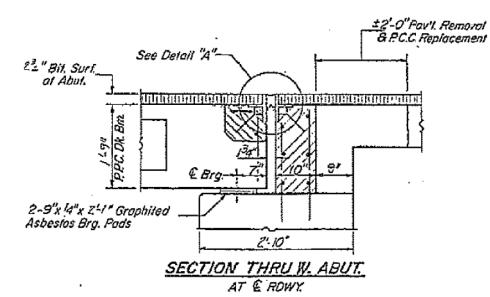
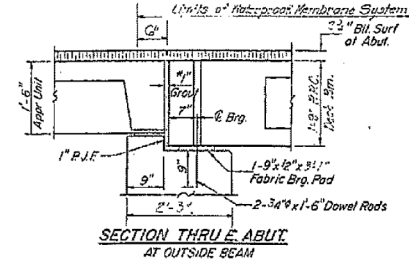


STATE OF ILLINOIS  
DEPARTMENT OF TRANSPORTATION

ROUTE NO.	SECTION	COUNTY	SHEET NO.	SHEET NO. OF SHEETS
FA 693	19BR	FORD	42	31
8 SHEETS				

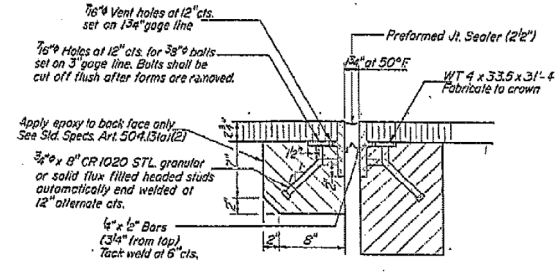


\* If joint shall be packed with a very dry mix of 2-1 sand and P.C. mortar. This dimension may vary plus or minus to accommodate tolerance in beam lengths.



**SEC. B-B**  
Epoxy Grouted 1/2" x 6" threaded rods in 3/4" drilled holes. See Special Prox for Epoxy Grouting.  
\* Cost incidental to Steel Sheet Piles.

**STEEL SHEET PILE**  
5" x 11.5" S. bolts 1/2" holes in E. Cost incidental to Steel Sheet Piles.



DETAIL "A"

NOTE: Dimensions are at right angles.  
Hatched areas to be poured after beams have been erected and joints grouted.  
Ends of beams shall be aligned at the expansion joints. Any linear variation in the beam lengths shall be placed at the fixed joint. See End of Beam Detail for reinforcement, sheet #3 or #4.  
Hatched Area Quantities:  
on the beam are billed with supersteel sheet #3.  
on the abutment are billed with abutment sheet #4.

DESIGNED <i>John T. Hartzel</i>	EXAMINED <i>June 16 1978</i>
CHECKED <i>Michael K. Tinsitt</i>	PASSED
DRAWN <i>MSW</i>	APPROVED
CHECKED <i>A.K.T.</i>	DIRECTOR OF HIGHWAYS

W-SR-D (2-17-75)

**MISCELLANEOUS DETAILS**  
F.A.R.T. 693 SEC. 19BR-1  
FORD COUNTY  
STA. 862+2000

FOR INFORMATIONAL  
USE ONLY

DESIGNED - TCR	REVISED
CHECKED - JML	REVISED
DRAWN - JWK	REVISED
CHECKED - MSW	REVISED
DATE - 8/10/12	

F.A.P. RTE.	SECTION	COUNTY	TOTAL SHEETS	SHEET NO.
693	19BR	FORD	61	48
CONTRACT NO. 66A12				
ILLINOIS FED. AID PROJECT				