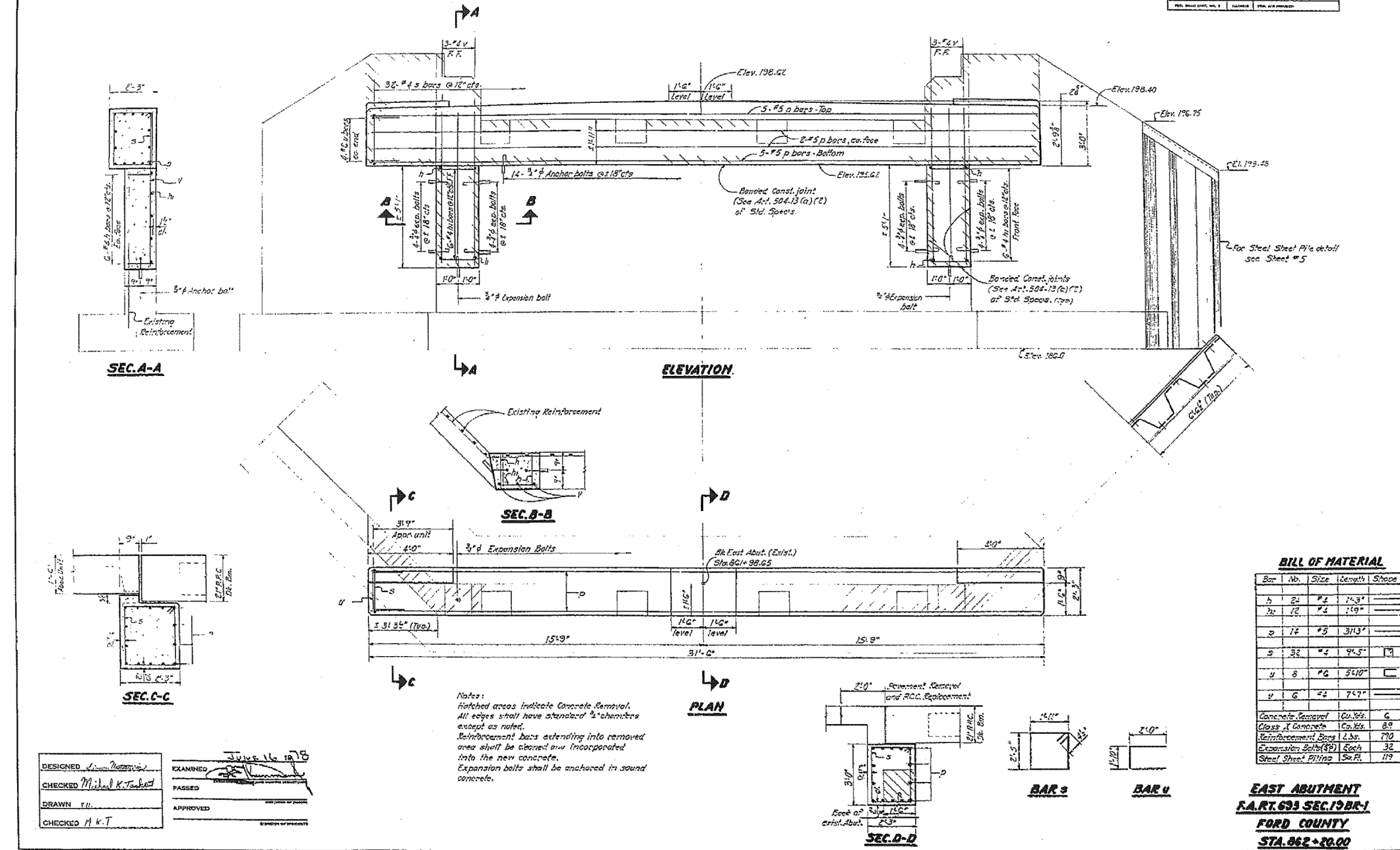


STATE OF ILLINOIS  
DEPARTMENT OF TRANSPORTATION

ROUTE NO.	SECTION	COUNTY	SHEET NO.	TOTAL SHEETS
190	19BR	FORD	42 33	8



**BILL OF MATERIAL**

Bar	No.	Size	Length	Splice	
h	24	#4	14.3'		
h	24	#4	14.9'		
g	14	#5	31.3'		
s	32	#4	94.5'	19	
v	8	#6	54.10'		
v	6	#4	74.7'		
Concrete Removal				1 Cu. Yds.	C
Class X Concrete				1 Cu. Yds.	89
Reinforcement Bars				1 Lbs.	170
Expansion Bolts (EB)				Each	32
Steel Sheet Piling				Sq. Ft.	119

**EAST ABUTMENT**  
**F.A.R.T. 633 SEC. 19 BR. 1**  
**FORD COUNTY**  
**STA. 862+20.00**

DESIGNED <i>V. J. [Signature]</i>	EXAMINED <i>[Signature]</i>
CHECKED <i>Michael K. Tumbel</i>	PASSED
DRAWN <i>T.H.</i>	APPROVED
CHECKED <i>A.K.T.</i>	

Notes:  
Hatched areas indicate Concrete Removal.  
All edges shall have standard 3/4" chamfers  
except as noted.  
Reinforcement bars extending into removed  
area shall be abraded and incorporated  
into the new concrete.  
Expansion bolts shall be anchored in sound  
concrete.

FOR INFORMATIONAL  
USE ONLY

DESIGNED - TCR	REVISED
CHECKED - JML	REVISED
DRAWN - JWK	REVISED
CHECKED - MSW	REVISED

F.A.P. RTE.	SECTION	COUNTY	TOTAL SHEETS	SHEET NO.
693	19BR	FORD	61	49
CONTRACT NO. 66A12				