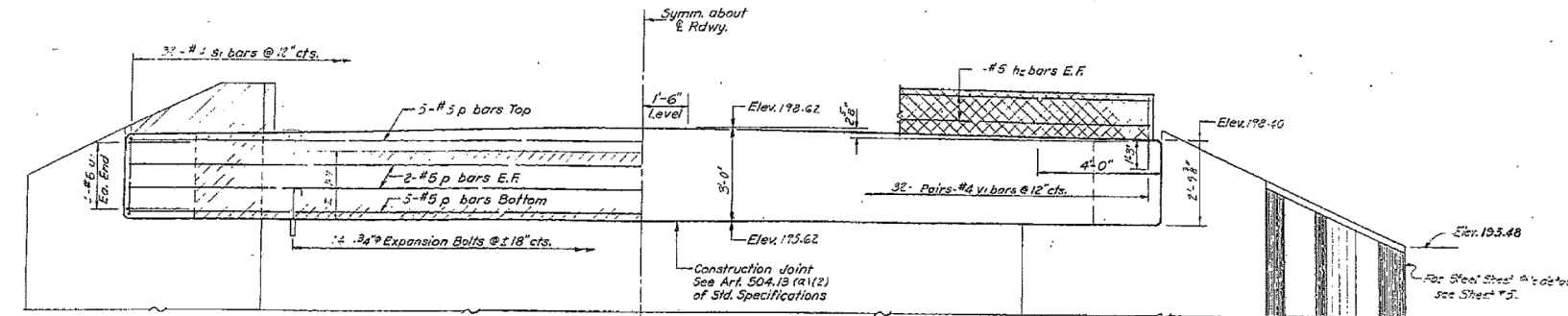
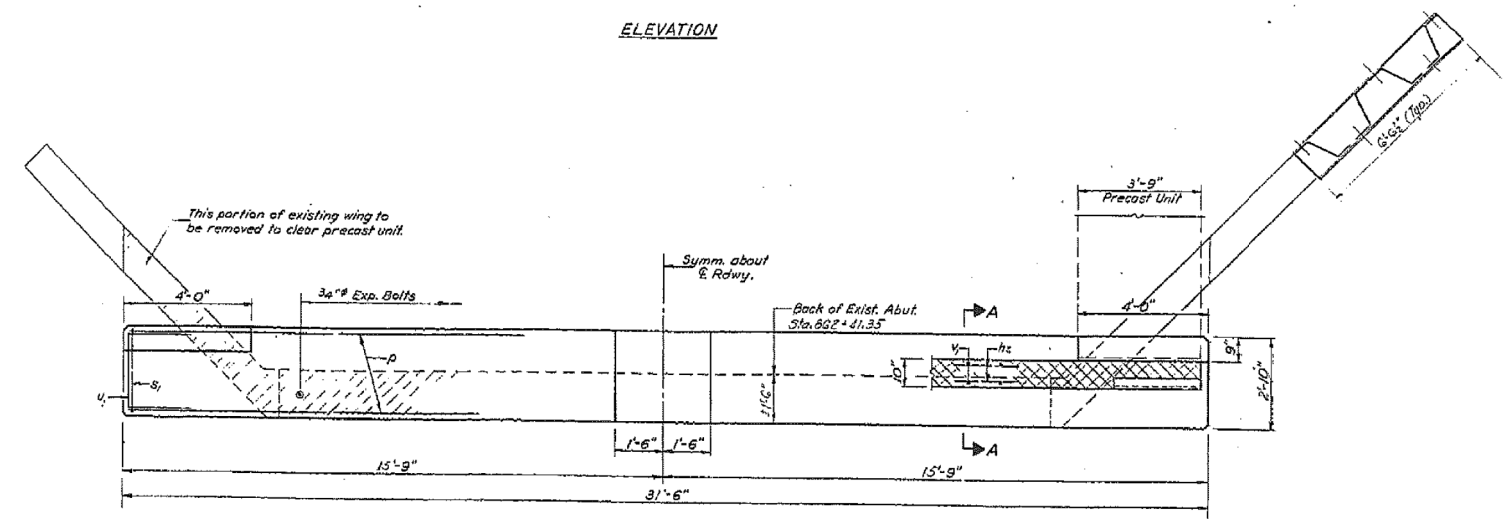


STATE OF ILLINOIS
DIVISION OF HIGHWAYS

PROJECT NO.	SECTION	COUNTY	TOTAL SHEETS	SHEET NO.
693	19BR-1	FORD	61	50

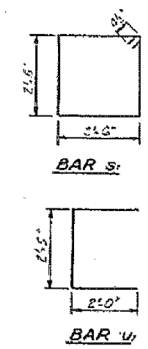


ELEVATION



PLAN

NOTES:
Hatched area indicates Concrete Removal. Reinforcement extending into removed area shall be cleaned and incorporated into the new construction.
Cross hatched area shall be poured after beams are in place.
Expansion bolts shall be anchored in sound concrete.
All edges shall have standard 3/4\"/>

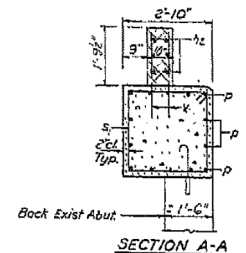


BILL OF MATERIAL

Bar	No.	Size	Length	Shape
hc	8	#5	30'-0"	---
p	14	#5	31'-9"	---
s	20	#2	19'-7"	D
u	2	#6	6'-5"	E
v	24	#4	21'-0"	---
Class X Concrete		Cu Wt.	11.2	
Reinforcement Bars		Lbs.	1670	
Expansion Bolts 3/4"		Each	14	
Concrete Removal		Cu Wt.	5	
Steel Sheet Piling		Sq. Ft.	114	

DESIGNED	EXAMINED
CHECKED	PASSED
DRAWN	APPROVED
CHECKED	

June 16 1978



WEST ABUTMENT
F.A.R. 693 SEC. 19BR-1
FORD COUNTY
STA. 862+20.00

W-A-2 (11-15-71) Expansion

FOR INFORMATIONAL
USE ONLY